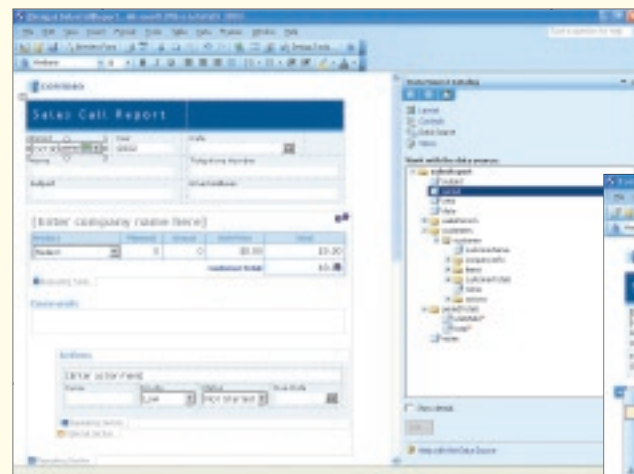


C M Y K

Part No. X10-03986

Microsoft® Office InfoPath™ 2003 helps you gather information flexibly and efficiently in rich, dynamic forms. Now you can more effectively share, reuse, and repurpose information throughout your team or organization—improving collaboration and decision-making.



Rich, dynamic forms allow you to quickly enter information that is more accurate and meaningful.

There's no need for in-depth programming knowledge—forms are easy to create.

Gather information more flexibly and efficiently.

- Easily **collect the right information**—the first time—with data validation, screen tips, and conditional formatting.
- Personalize the information being captured; **add sections as you go** to make the information you gather more meaningful.
- **Work online or offline** to conveniently gather and manage information anywhere, anytime.
- **Minimize training time** with the familiar Microsoft Office environment, and access authoring features like spell check, font formatting, and more.

Connect people, information, and processes more effectively.

- Share, reuse, and repurpose information across systems and processes with **support for XML Web services**.
- **Enhance team collaboration** by integrating InfoPath 2003 with Microsoft Windows® SharePoint™ Services.

Easily develop and deploy rich, dynamic forms.

- Build your own forms for gathering information in the **WYSIWYG design mode**, or work with 25 ready-to-use samples.
- Include powerful features like **data validation** in your forms without writing code.
- **Publish your forms** to a shared network folder, a Web server, a Microsoft Windows SharePoint Services form library, or send them via e-mail.

InfoPath 2003 usage scenarios

InfoPath can make any organization more efficient:

- Save time and effort by using InfoPath to **update the results of sales calls** and then make that information accessible to others in the company.
- Easily create a **weekly team status report** that provides a quick and effective way for teams to collaborate.
- Use InfoPath to **track employee time** and expenses with accuracy and minimal effort.
- **Speed up the processing** of purchase orders and project approvals with InfoPath.

You must accept the enclosed License Agreement before you can use this product. If you do not accept the terms of the License Agreement, you should promptly return the product for a refund. A copy of the product License Agreement is available for review at www.microsoft.com/office/eula. Product activation is required for continued use of the product, and may be done by Internet or telephone. Instructions and Microsoft's privacy policy will be detailed to the user during launch of the product.

System requirements

To use Microsoft Office InfoPath 2003, you need:

- PC with Pentium 233 Mhz or higher processor; Pentium III recommended
 - **Microsoft Windows 2000 with Service Pack 3 or later or Microsoft Windows XP or later operating system**
 - 128 MB of RAM or above recommended
 - 100 MB of available hard disk space (hard disk usage will vary depending on configuration; custom installation choices may require more or less hard disk space)
 - Optional installation files cache (recommended) requires an additional 250 MB of available hard disk space
 - Super VGA (800 × 600) or higher resolution monitor
- Additional items or services required to use certain features:**
- Microsoft Windows Server® 2003 running Windows SharePoint Services required for certain advanced collaboration functionality

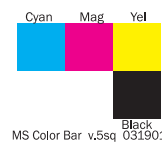
© 2003 Microsoft Corporation. All rights reserved.
The example companies, organizations, products, people, and events depicted herein are fictitious. No association with any real company, organization, product, person, or event is intended or should be inferred.
Microsoft, InfoPath, the Office logo, SharePoint, Windows, Windows Server and the Windows logo are either registered trademarks or trademarks of Microsoft Corporation in the United States and/or other countries.

Visit the Microsoft Office InfoPath 2003 Web site at www.microsoft.com/office/infopath.

Microsoft

Microsoft Office
InfoPath 2003

Requires Windows® 2000 or Windows® XP or later operating system



Mechanical Approval:

Part Number: X10-03986 Part Description: InfoPath 2003 FPP Carton
Client: Microsoft Project Manager: Candace Shrope
Approved ☐ Approved with Changes ☐ Client Approval: Date: _____
Customer Service Representative: Hershel Klein Job Number: 307294
Digital Assembly: Production Edit: CSR: Pass Number: _____

Return By: _____

rainiercolor.

3311 South 120th Place, Suite 100
Seattle, WA 98168 USA
206.621.8533 phone
206.621.1636 fax
www.rainiercolor.com

Mechanical Round

1

S004836.eps

Microsoft® Office
InfoPath™ 2003

This label indicates that the package contains genuine Microsoft product. If the label is missing, or appears to have been tampered with, please e-mail Microsoft at privacy@microsoft.com or Business Software Alliance at software@bsa.org, or call your local Microsoft sales office.

Microsoft Corporation
One Microsoft Way
Redmond, WA 98052-6399, USA

Requires
Windows. 2000
or Windows. XP



Microsoft Office
InfoPath™ 2003

The Microsoft Office Information Gathering and Management Program

- **Gather information more flexibly and efficiently**
- **Connect people, information, and processes**
- **Easily develop and deploy rich, dynamic forms**

Microsoft®

