

数据中心管理过程自动化 —技术概述

高伟

MCT

东方瑞通（北京）咨询服务有限公司

会议目标和产品价值

目标:

- 使您能够理解Opalis 关键功能
- 使您能够理解 Opalis 能给企业的IT管理带来的优势
- 使您能够理解System Center Orchestrator 给企业带来IT管理的新契机及其新功能

价值:

- Opalis是一款具有集成管理业务流程和自动化业务流程的管理软件
- Opalis 是System Center Suite中的一个组件
- 每个企业至少有一种IT自动化流程可以通过使用 Opalis 来完成!

为什么我们投资于IT流程自动化？

- System Center 怎么样去提供 ITPA?
 - 一致性
 - 合规性
 - 整合



Removal of the manual

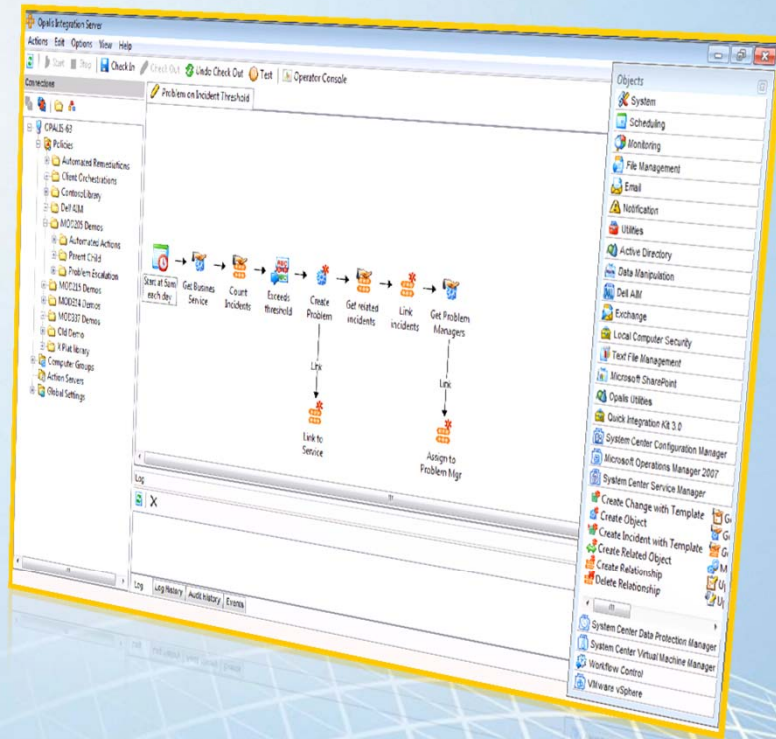


The ability to choose

TODAY

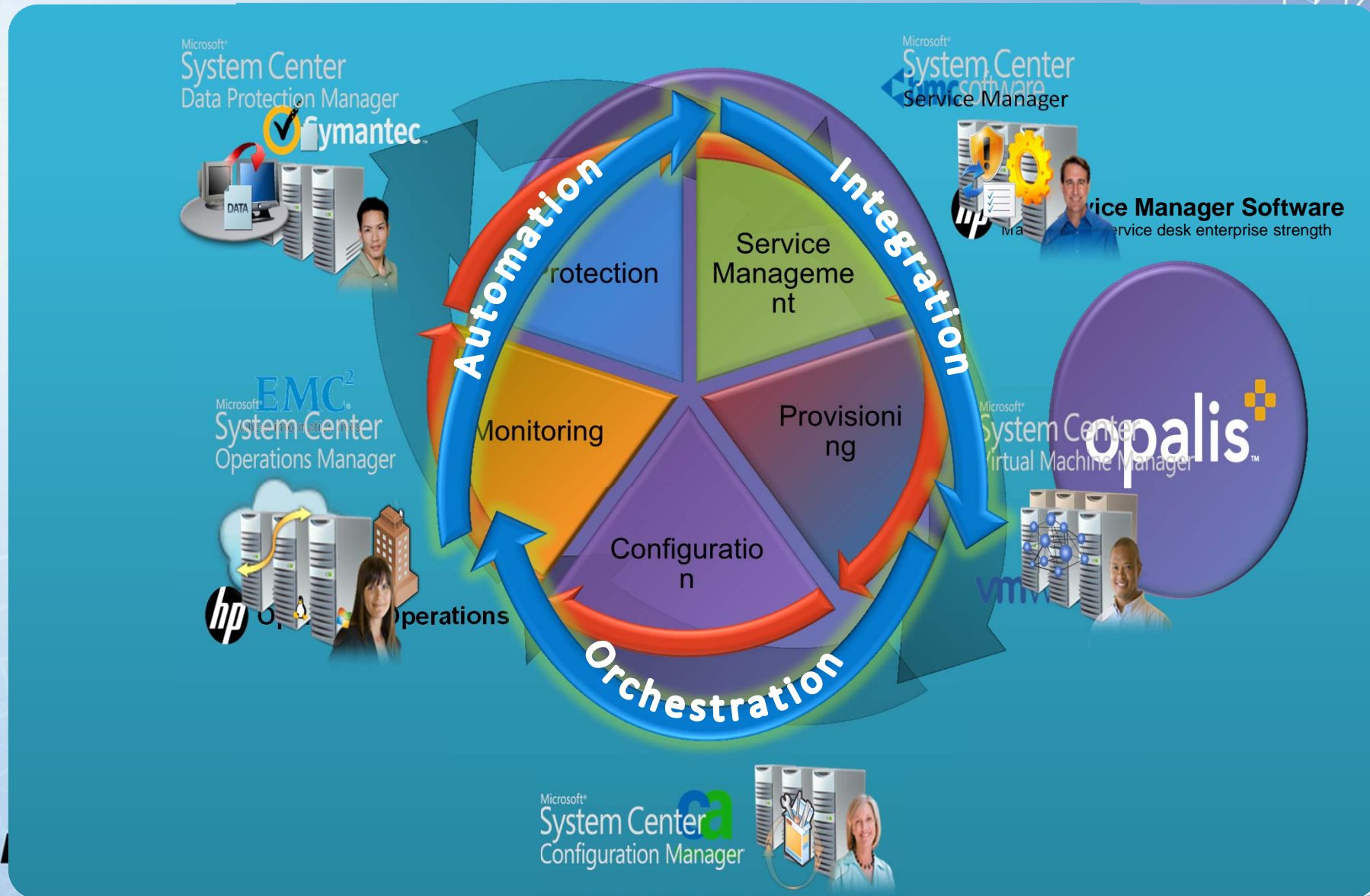
凭借Opalis 6.3的功能

Opalis 历史



- Opalis is a mature solution set
 - Founded in 1999
 - Current version is 6.3 (Nov 2010)
- Acquired by Microsoft in December 2009
- Opalis is a subsidiary of Microsoft
 - The current version of Opalis is a grant to Microsoft customers

Opalis brings it all together!



Opalis 概念

- Activities（活动）
 - Intelligent tasks that perform defined actions
- Integration Packs（集成包）
 - The way Opalis integrates to and executes activities against other systems and solutions
- Databus
 - The mechanism Opalis uses to publish and consume information between activities as the runbook executes
- Runbooks
 - System level workflows that execute a series of linked activities to complete a defined set of actions

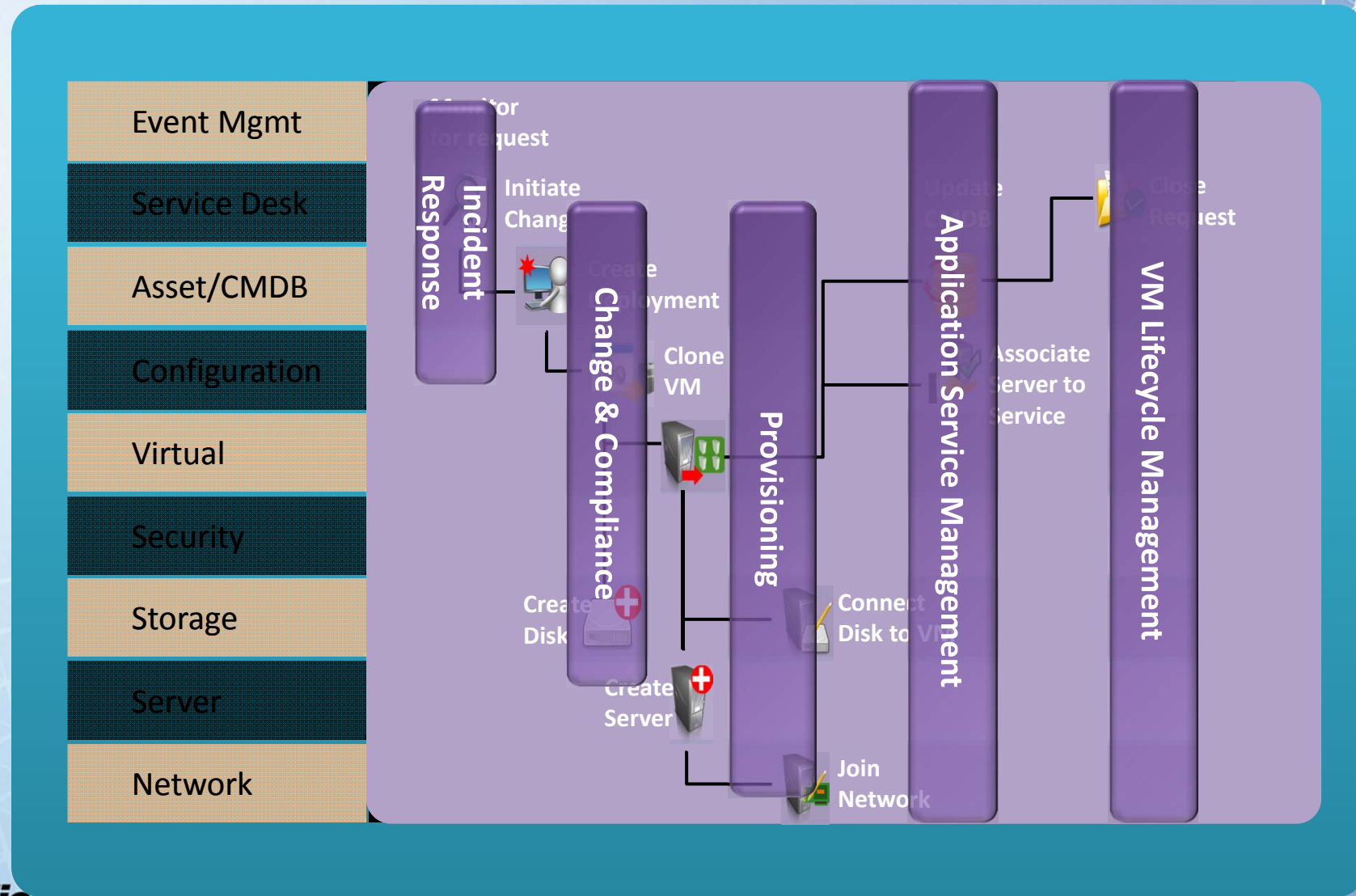
执行任务变得简便



Request ID	VM Size	VM Disk	...	VM ID	VM Name	...	Disk ID	...	Job ID	...	Protection Group	...
CR3453	Large	8GB	...	23311	VM233	...	33434	...	6655	...	LargeVMs	...
CR3460	Small	1GB	...	23311	VM234	...	33435	...	6657	...	SmallVMs	...
CR3750	Small	4GB	...	23311	VM235	...	33436	...	6659	...	SmallVMs	...
CR2762	Medium	5GB	...	23311	VM236	...	33437	...	6670	...	MediumVMs	...

Opalis Databus

在数据中心自动化数据仓库



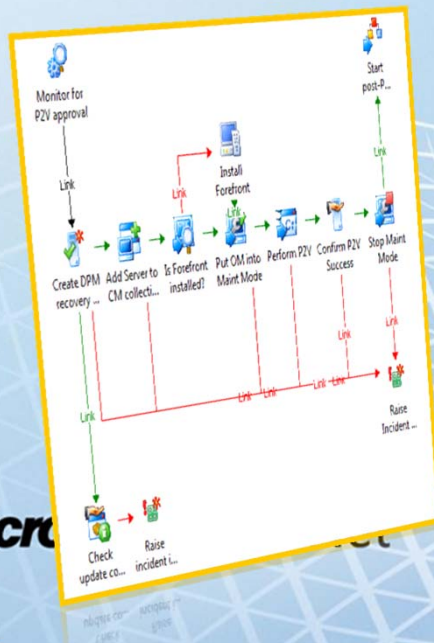
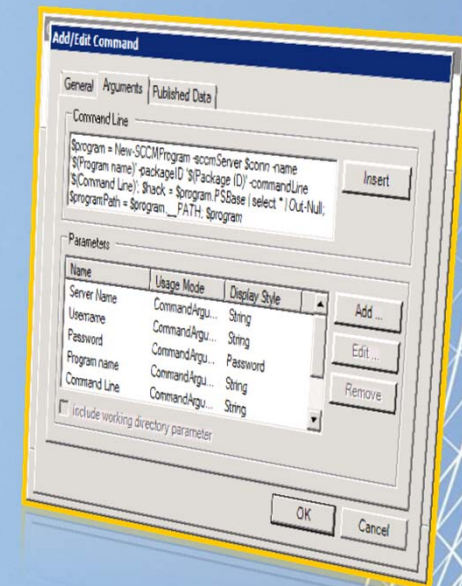
Opalis 目标场景示例

- Manual tasks (手工任务)
- Batch Scripts (批量脚本)
- Compliance requirements
- User request scenarios
- Provisioning
- Disaster Recovery (灾难恢复)
- Desktop scenarios
- Responding to incidents (事件响应)
- Change Control
- Multiple Service Desks
- Capacity Management
- Release Management
- SLA adherence issues
- Rapid change environments
- Diverse system integrations
- Patch Remediation

Every customer has at least one scenario that **Opalis** answers!

Opalis 解决方案能力

- 通过客户的使用得到检验
 - Currently on 6th version of product which has seen broad customer adoption for a variety of use cases
- 审核和调试简单易用
 - Drag and drop, Visio-like authoring, nested runbooks, built in features like looping and branching.
- Databus
 - Abstracts developer-level complexity from the runbook author and enables Hub-and-spoke integration model



■ 集成包

- All major enterprise products covered (HP, IBM, CA, BMC, EMC)

■ 易于扩展

- Quick Integration Kit (QIK)

■ 操作控制台

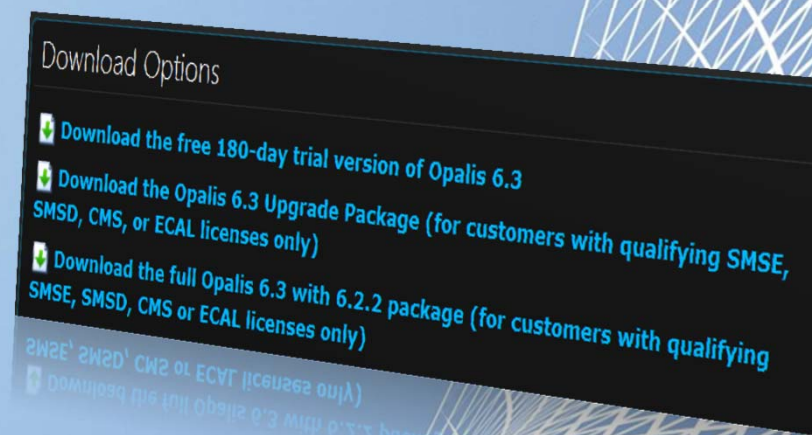
- Role-based views provide visibility to the runbooks

■ 成本

- All Management licensing vehicles (SMSE/D, ECI, e-CAL and SPLA) include a license grant for Opalis.

如何获取Opalis?

- The Opalis subsidiary has granted Microsoft customers rights to Opalis:
 - Server Management Suite Enterprise/Datacenter (SMSE/D)
 - New into Service Provider Licensing (SPLA)!
 - New into Enterprise CAL (eCAL) for client scenarios!
- Getting the bits:
 - 180 day trial available on microsoft.com
 - Full version and licenses also on microsoft.com
 - Opalis will not be on MVLS, TechNet or MSDN





TOMORROW

让我们来看一下System Center Orchestrator!

System Center Orchestrator 投资领域



IT Pro

- Authoring, Debugging & Scripting



Operator

- Trigger, Monitor & Troubleshoot



Developer

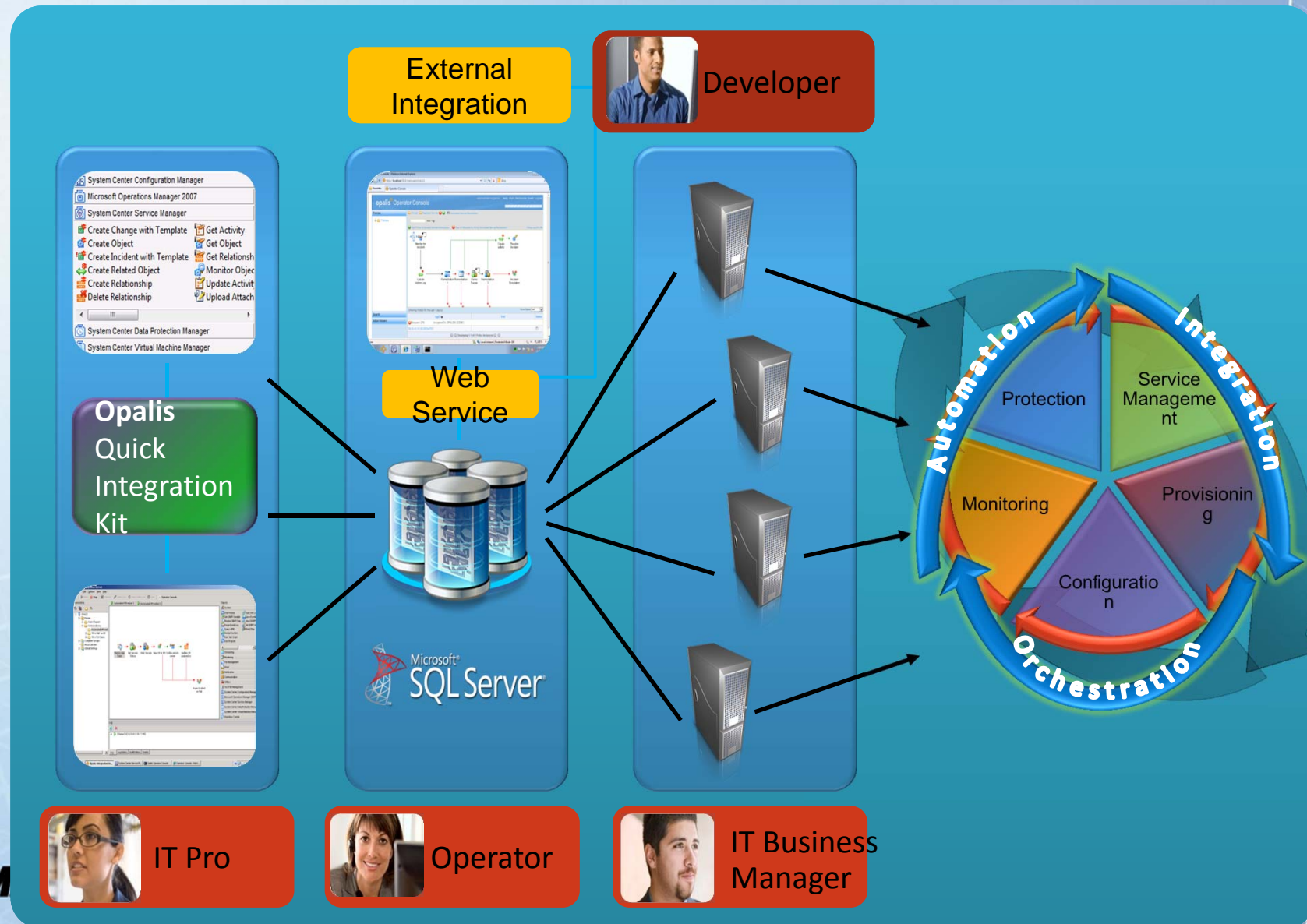
- Application integration



IT Business Manager

- Report & Analyze

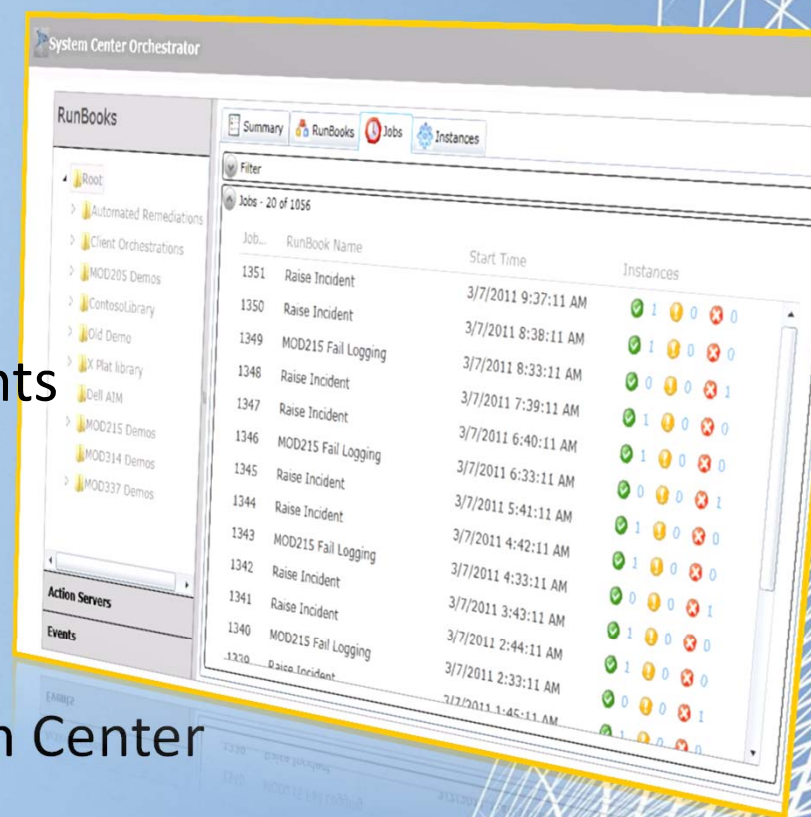
Opalis的组件



您将在Orchestrator看到什么呢?

- 动态 Silverlight 控制台
- Consistency across Versions
 - Opalis 6.3 & Orchestrator
 - PowerShell
 - Protection of existing investments in Opalis 6.3

- 强大的 Web Service
 - Interface from anywhere to System Center
- Reporting
 - No new interfaces, just leverage of existing structures
- Script based interaction with System Center Orchestrator



常见问题!

本地化/全球化

- We are globalizing for Orchestrator
- Localization (languages other than EN_US) will follow in a future release.

Operations Manager 管理包

- YES!
- Released with Orchestrator

Opalis 第三方集成包

- BladeLogic Operations Manager
- BMC Atrium CMDB
- BMC Remedy AR System
- BMC Event Manager
- BMC Patrol
- CA Spectrum
- CA Unicenter Service Desk
- CA Autosys
- CA eHealth
- CA Unicenter NSM
- EMC Smarts InCharge
- VMware vSphere
- File Transfer Protocol

- HP iLO and OA
- HP OpenView Operations (Windows)
- HP Service Manager
- HP Asset Manager
- HP Network Node Manager
- HP OpenView Operations (Unix - HP-UX)
- HP OpenView Operations (Unix - Solaris)
- HP OpenView Service Desk
- IBM Tivoli Netcool Omnibus
- IBM Tivoli Enterprise Console
- IBM Tivoli Storage Manager
- UNIX
- Veritas NetBackup

Mic

Items in Green are targeted for remediation for the Orchestrator release

Useful Links

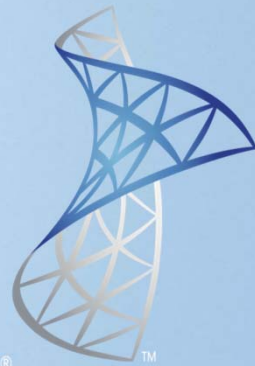
- <http://msft.it/opalisresources>
- <http://msft.it/opalis>
- <http://msft.it/opalisblog>
- <http://msft.it/opalistechnet>
- <http://msft.it/CharlesJoy>
- <http://msft.it/adamhall>
- <http://opalis.codeplex.com>



DEMO

Microsoft | TechNet

Close, Q & A



Microsoft®
System Center
Orchestrator

The image features a solid light blue background. A white wireframe grid, composed of numerous intersecting lines, curves upwards from the bottom left and right corners, meeting towards the center. The grid lines are more densely packed on the right side, creating a sense of depth and movement. In the center of the image, the word "Microsoft" is written in a bold, black, sans-serif font. Below it, the tagline "Be what's next." is written in a smaller, black, sans-serif font.

Microsoft®

Be what's next.™