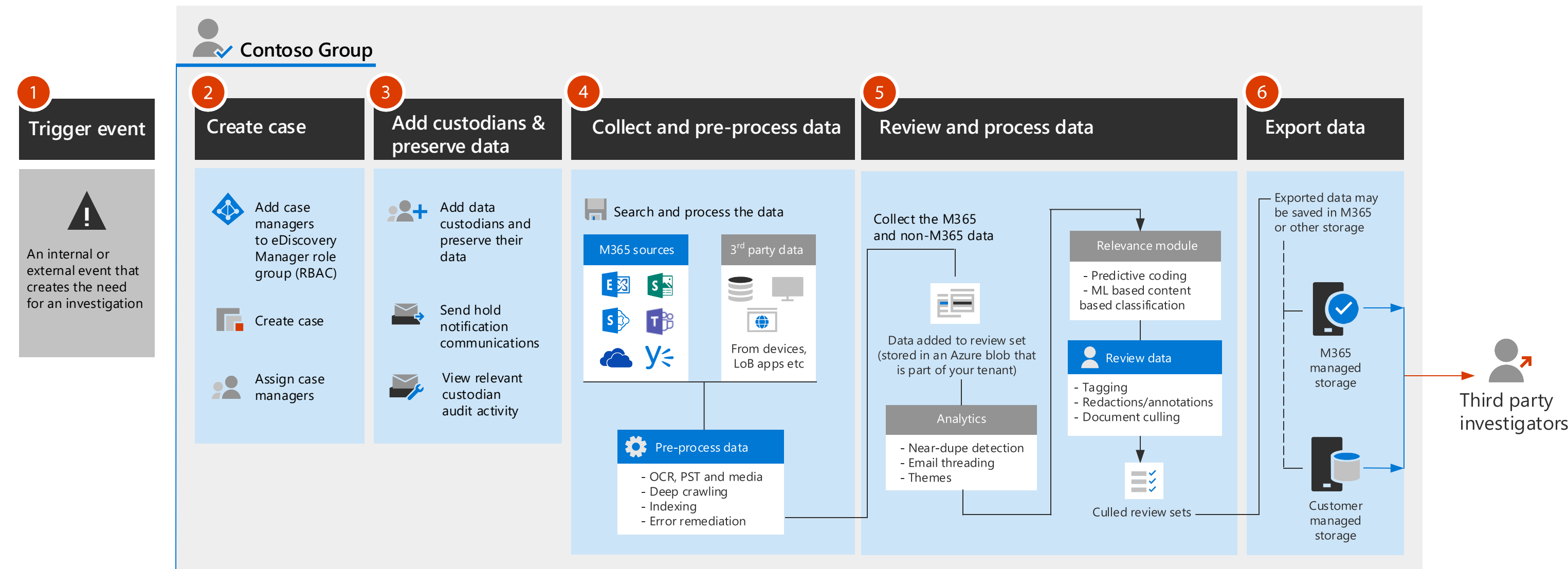


Advanced eDiscovery Architecture in Microsoft 365

Work flow in a Single-Geo environment

Advanced eDiscovery provides an end-to-end workflow to preserve, collect, review, analyze, and export content that is responsive to your organization's internal and external investigations. It also lets legal teams manage the entire legal hold notification workflow to communicate with custodians involved

in a case, as required by regulatory bodies like FINRA and FINMA. Pertinent information can be collected from Microsoft 365 and third-party data sources, analyzed, and then redacted so that only relevant sections are made available to external parties for investigation.

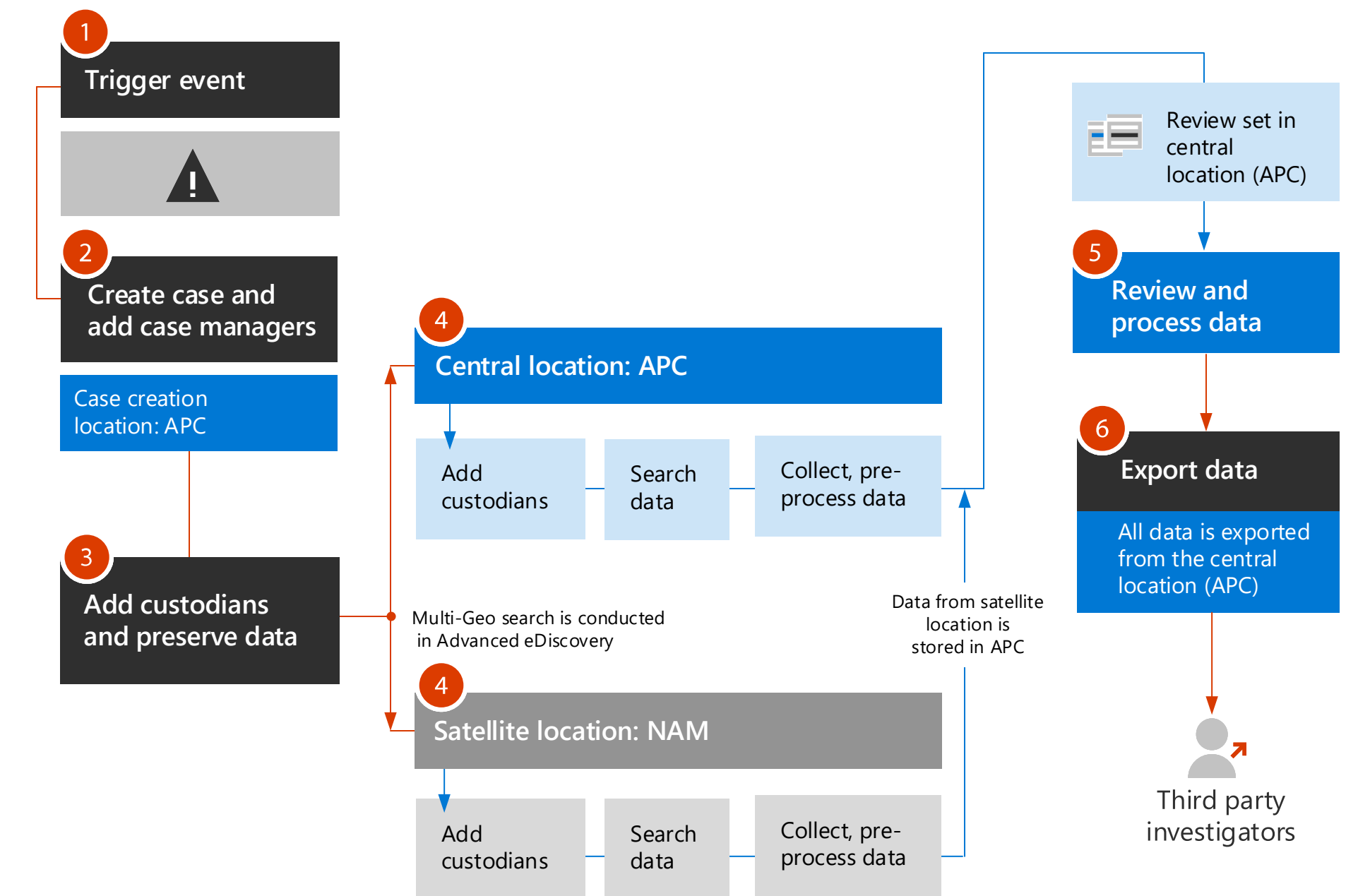


Work flow in a Multi-Geo environment

Microsoft 365 Multi-Geo is an add-on capability that gives organizations the ability to manage and store data in multiple geographic regions within their tenant. By default, an eDiscovery Manager or admin in a multi-geo environment can only search for content located in their own geo location.

However in Advanced eDiscovery, admins can search for content in any geo location in their organization. That means they don't have to create search permissions filters by using the **New-ComplianceSecurityFilter** cmdlet with the **Region** parameter.

In Advanced eDiscovery, all case content is copied to reviews sets located in the geo location where the case was created. Similarly, during export, case content is exported from the geo location where the case was created.



Data flow in Advanced eDiscovery

Advanced eDiscovery supports the EDRM workflow

When an organization responds to a legal investigation, the workflow around identifying, preserving, and collecting potentially relevant content is based on the people in the organization who are the custodians of relevant data. In eDiscovery, these individuals are called *data custodians* (or just *custodians*).

Content locations where case custodians don't have administrative control but may be owners of relevant data, are known as non-custodial data sources. In an Advanced eDiscovery case, legal teams can add individuals in their organization as custodians, and identify and preserve content in custodial M365 data sources and non-custodial data sources. By using the built-in custodian and data source management tool in Advanced eDiscovery, organizations can secure collect electronically stored information and preserve it from inadvertent (or intentional) deletion.

