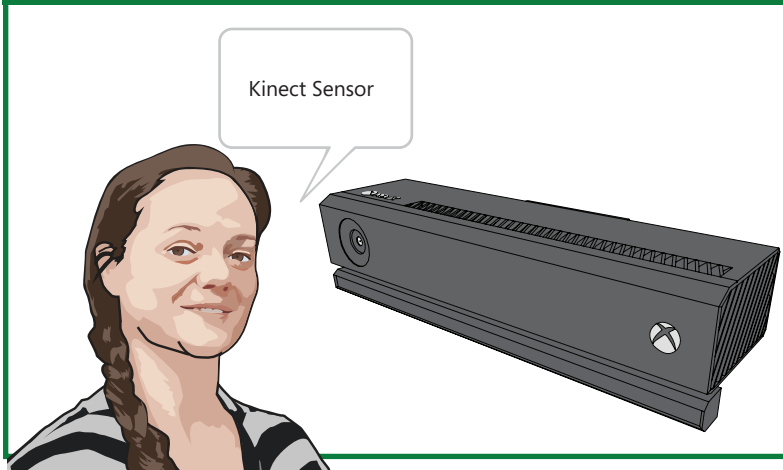


# Kinect Packing Instructions



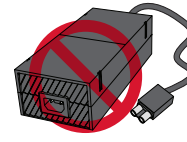
## SEND



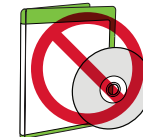
## DO NOT SEND



Controllers



Power supply



Games or DVDs



USB



Messenger kit

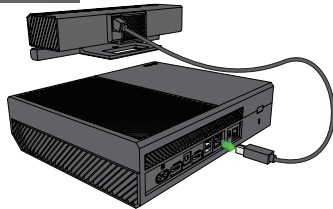


Headset



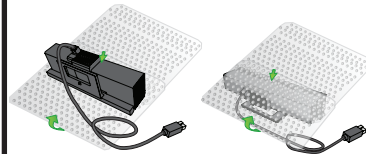
HDMI cables

1



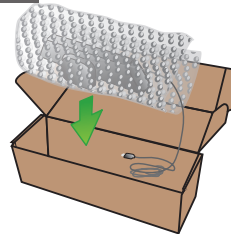
- Unplug the Kinect Sensor from the console.

2



- Obtain a sturdy delivery box (Please DO NOT use the original retail box).
- Wrap the sensor in bubble wrap, newspaper or other recyclable packing material. Do not use clothing.

3



- Make sure that the sensor fits snugly in the box, to reduce the possibility of delivery damage.
- Seal the box with packing tape.

4



- Attach the delivery label, and write your return address on the box.
- Write down the tracking number from the delivery label.

5



- Post the package, and keep your delivery receipt.
- You are responsible for any pick up charges.
- You can visit [www.xbox.com/support](http://www.xbox.com/support) to check your repair status at any time.