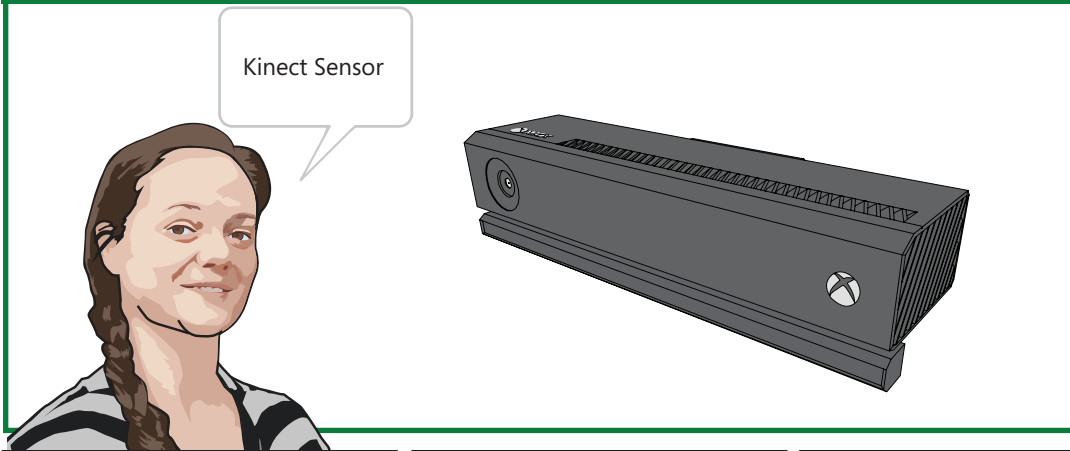


Kinect Advanced Exchange Delivery Instructions

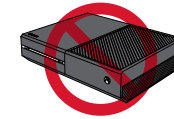


Your Replacement Kinect sensor is here! Please follow the packing instructions below to return your old Kinect sensor within 14 days!

SEND



DO NOT SEND



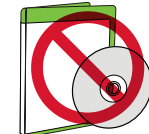
Console



Power supply

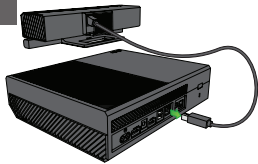


Mounting or
Bracket Stand



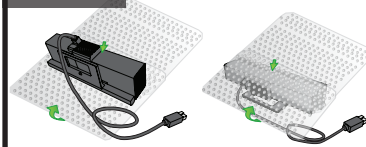
Games or DVDs

1



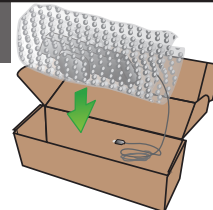
- Unplug the Kinect Sensor from the console.

2



- Use the box and packaging that the replacement Kinect was delivered in to send the non-working sensor.

3



- Make sure that the sensor fits snugly in the box, to reduce the possibility of delivery damage.
- Seal the box with packing tape.

4



- Attach the delivery label, and write your return address on the box.
- Write your return address on the box.
- Write down the tracking number from the delivery label.

5



- Post the package, and keep your delivery receipt.
- You are responsible for any pick up charges.
- You can visit www.xbox.com/support to check your repair status at any time.

Note: If you do not return your old Kinect sensor within 14 days, you will be charged for the replacement sensor.