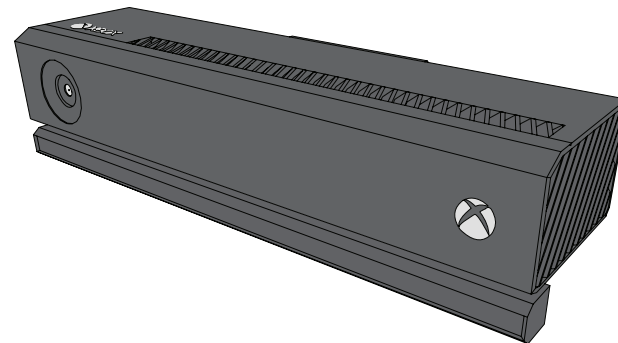


Kinect Packing Instructions

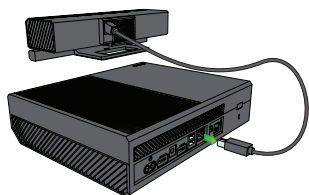


SEND



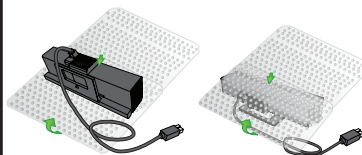
Any accessories requested by the representative

1



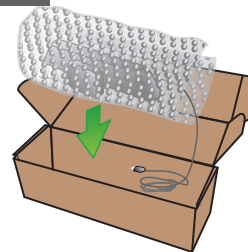
- Unplug the Kinect Sensor from the console.

2



- Place the foam sheet on top of the bubble wrap.
- Place the Kinect sensor face down on the foam sheet.
- Wrap the Kinect sensor carefully.
- Make sure that the Kinect cable is outside the bubble wrap.

3



- Place the Kinect sensor in the box provided, cable first.
- Include all accessories requested by the agent.
- Make sure that everything is packed snugly.

4



- Seal the box with the packing tape provided.
- Attach the return delivery label over the original delivery label.
- Write down the tracking number from the delivery label.
- Microsoft is not responsible for any delivery damage.
- You can visit <https://myservice.xbox.com> to check your repair status at any time.

5



- Deliver the package and keep your delivery receipt.
- You are responsible for any pick up charges.