

# Digital Transformation @work

Empowering  
Together



# Digital Transformation work

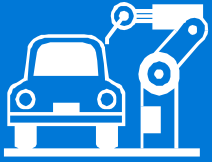
Empowering Together

## Azure Investments and Roadmap

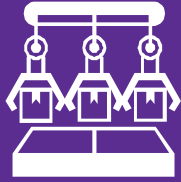
George Moore

Chief Security Officer, Azure Compute  
Microsoft

# Azure Platform and Vertical Investments



Discrete  
Manufacturing



Retail and  
Consumer Goods



Banking and  
Capital Markets



Government

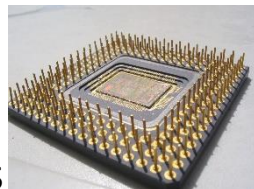


Healthcare

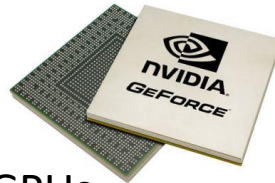


## Azure Core Platform

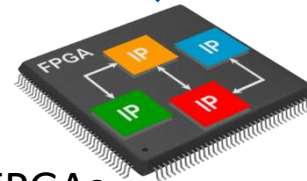
Fundamentals: Availability, Scalability, Supportability, Capacity, Security, Compliance



CPUs



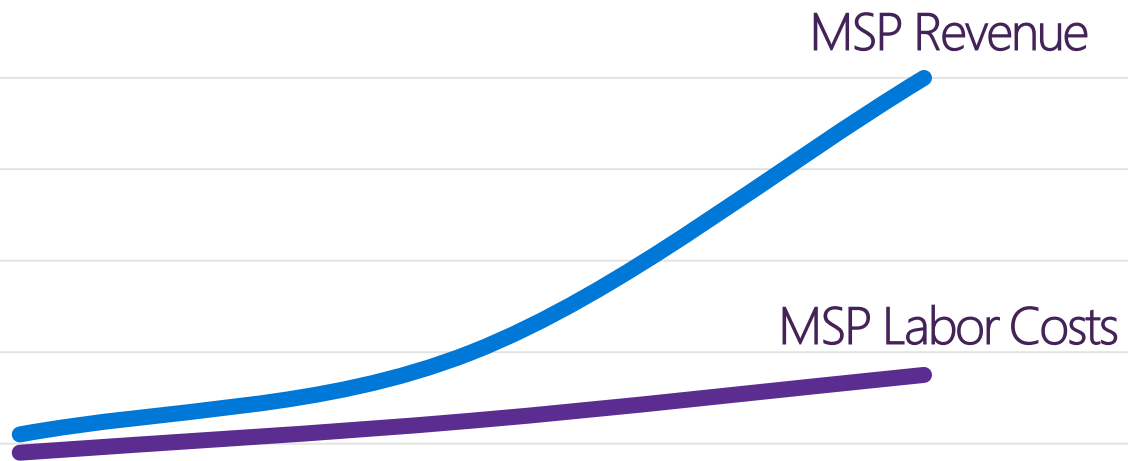
GPUs



FPGAs

# Scaling with Growth:

Increased MSP profitability via larger revenue over contained cost basis



## Growth Principals:

- Automate: remove manual processes
- Reuse components where possible
- Machine learning to identify anomalies
- Enable your customer's self-sufficiency

Microsoft is making investments in both areas: new Azure scenarios to grow MSP Revenue, and devops automation capabilities to contain MSP Labor Costs.

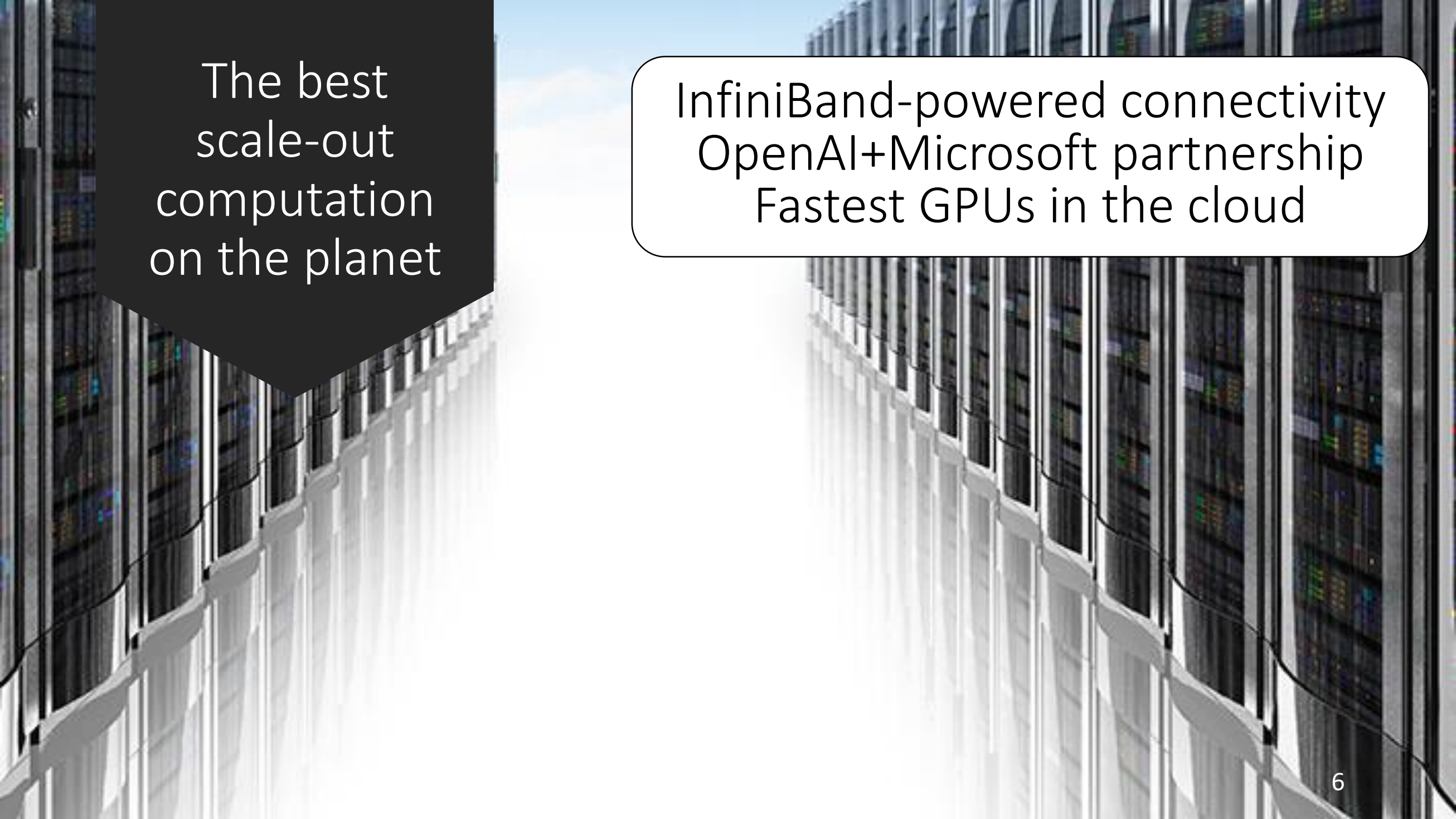
# Availability: Guaranteed VM Uptime SLAs

## **Single-Instance: 99.9%**

Azure is the only public cloud provider to offer single-instance VM SLAs

## **Multi-Instance: 99.95%**

Two or more VMs in an Availability Set



The best  
scale-out  
computation  
on the planet

InfiniBand-powered connectivity  
OpenAI+Microsoft partnership  
Fastest GPUs in the cloud

# Largest scale-up servers in the cloud

576 core single-node

12 TB single-node

32 TB multi-node

Bare metal performance



# Build and run open source solutions



Openness and flexibility

## Applications



## DevOps



## Frameworks



## Databases & middleware



## Containers



## Infrastructure





# New: Azure Appliance

Fully managed service offerings by partners



Customer Deploys  
Customer Decommissions



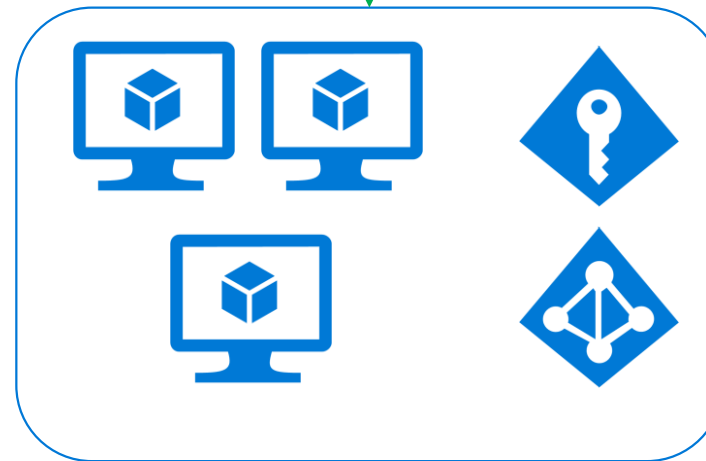
Customer Subscription



Vendor Subscription



Vendor Builds/Publishes  
Vendor Monitors/Operates  
Vendor Upgrades  
Vendor Controls



# Azure Appliance Demo

# New Compute SKU Roadmap

<b>VM Sizes</b>	<b>ETA to Live</b>
3.5 TB of Memory	Q2 CY'17
Dv3 - Hyper-threaded	Q2 CY'17
Ev3 - Hyper-threaded	Q2 CY'17
Latest generation GPU	Q2 CY'17
Skylake-based VMs	Q3 CY'17

# Isolation Fundamentals

Ensure the customer's environments have proper isolation:

- Leverage AAD (federated customer identities, MFA, service identities) to ensure your customers have visibility and admin rights into their own subscriptions.
- Ensure your Azure subscriptions, resource groups and network controls have proper customer and tenant isolation

Q/A

# Key Takeaways



Microsoft is making heavy capital and services investments

Azure is a very open and compliant

Plan for scale and growth via automation

Leverage the fundamentals regarding secure devops



Thank you



**Trust**



**Openness and  
flexibility**



**Application  
innovation**



**Data and  
intelligence**





