

# [MS-SPEMAWS]:

## SharePoint Email Web Service Protocol

---

### Intellectual Property Rights Notice for Open Specifications Documentation

- **Technical Documentation.** Microsoft publishes Open Specifications documentation for protocols, file formats, languages, standards as well as overviews of the interaction among each of these technologies.
- **Copyrights.** This documentation is covered by Microsoft copyrights. Regardless of any other terms that are contained in the terms of use for the Microsoft website that hosts this documentation, you may make copies of it in order to develop implementations of the technologies described in the Open Specifications and may distribute portions of it in your implementations using these technologies or your documentation as necessary to properly document the implementation. You may also distribute in your implementation, with or without modification, any schema, IDL's, or code samples that are included in the documentation. This permission also applies to any documents that are referenced in the Open Specifications.
- **No Trade Secrets.** Microsoft does not claim any trade secret rights in this documentation.
- **Patents.** Microsoft has patents that may cover your implementations of the technologies described in the Open Specifications. Neither this notice nor Microsoft's delivery of the documentation grants any licenses under those or any other Microsoft patents. However, a given Open Specification may be covered by Microsoft [Open Specification Promise](#) or the [Community Promise](#). If you would prefer a written license, or if the technologies described in the Open Specifications are not covered by the Open Specifications Promise or Community Promise, as applicable, patent licenses are available by contacting [iplg@microsoft.com](mailto:iplg@microsoft.com).
- **Trademarks.** The names of companies and products contained in this documentation may be covered by trademarks or similar intellectual property rights. This notice does not grant any licenses under those rights. For a list of Microsoft trademarks, visit [www.microsoft.com/trademarks](http://www.microsoft.com/trademarks).
- **Fictitious Names.** The example companies, organizations, products, domain names, e-mail addresses, logos, people, places, and events depicted in this documentation are fictitious. No association with any real company, organization, product, domain name, email address, logo, person, place, or event is intended or should be inferred.

**Reservation of Rights.** All other rights are reserved, and this notice does not grant any rights other than specifically described above, whether by implication, estoppel, or otherwise.

**Tools.** The Open Specifications do not require the use of Microsoft programming tools or programming environments in order for you to develop an implementation. If you have access to Microsoft programming tools and environments you are free to take advantage of them. Certain Open Specifications are intended for use in conjunction with publicly available standard specifications and network programming art, and assumes that the reader either is familiar with the aforementioned material or has immediate access to it.

**Preliminary Documentation.** This Open Specification provides documentation for past and current releases and/or for the pre-release version of this technology. This Open Specification is final documentation for past or current releases as specifically noted in the document, as applicable; it is preliminary documentation for the pre-release versions. Microsoft will release final documentation in connection with the commercial release of the updated or new version of this technology. As the documentation may change between this preliminary version and the final version of this technology, there are risks in relying on preliminary documentation. To the extent that you incur additional

development obligations or any other costs as a result of relying on this preliminary documentation, you do so at your own risk.

Preliminary

## Revision Summary

Date	Revision History	Revision Class	Comments
4/4/2008	0.1		Initial Availability
6/27/2008	1.0	Major	Revised and edited the technical content
8/15/2008	1.01	Editorial	Revised and edited the technical content
12/12/2008	1.02	Editorial	Revised and edited the technical content
7/13/2009	1.03	Major	Revised and edited the technical content
8/28/2009	1.04	Editorial	Revised and edited the technical content
11/6/2009	1.05	Editorial	Revised and edited the technical content
2/19/2010	2.0	Minor	Updated the technical content
3/31/2010	2.01	Editorial	Revised and edited the technical content
4/30/2010	2.02	Editorial	Revised and edited the technical content
6/7/2010	2.03	Editorial	Revised and edited the technical content
6/29/2010	2.04	Minor	Clarified the meaning of the technical content.
7/23/2010	2.04	No Change	No changes to the meaning, language, or formatting of the technical content.
9/27/2010	2.04	No Change	No changes to the meaning, language, or formatting of the technical content.
11/15/2010	2.04	No Change	No changes to the meaning, language, or formatting of the technical content.
12/17/2010	2.04	No Change	No changes to the meaning, language, or formatting of the technical content.
3/18/2011	2.04	No Change	No changes to the meaning, language, or formatting of the technical content.
6/10/2011	2.04	No Change	No changes to the meaning, language, or formatting of the technical content.
1/20/2012	3.0	Major	Significantly changed the technical content.
4/11/2012	3.0	No Change	No changes to the meaning, language, or formatting of the technical content.
7/16/2012	3.0	No Change	No changes to the meaning, language, or formatting of the technical content.
9/12/2012	3.0	No Change	No changes to the meaning, language, or formatting of the technical content.
10/8/2012	3.1	Minor	Clarified the meaning of the technical content.
2/11/2013	3.1	No Change	No changes to the meaning, language, or formatting of the technical content.
7/30/2013	3.2	Minor	Clarified the meaning of the technical content.
11/18/2013	3.2	No Change	No changes to the meaning, language, or formatting of the technical content.
2/10/2014	3.2	No Change	No changes to the meaning, language, or formatting of the technical content.
4/30/2014	3.3	Minor	Clarified the meaning of the technical content.
7/31/2014	3.3	No Change	No changes to the meaning, language, or formatting of the technical content.
10/30/2014	3.3	No Change	No changes to the meaning, language, or formatting of the technical content.
3/16/2015	4.0	Major	Significantly changed the technical content.

# Table of Contents

<b>1</b>	<b>Introduction .....</b>	<b>8</b>
1.1	Glossary .....	8
1.2	References .....	9
1.2.1	Normative References .....	9
1.2.2	Informative References .....	10
1.3	Overview .....	11
1.4	Relationship to Other Protocols .....	11
1.5	Prerequisites/Preconditions .....	11
1.6	Applicability Statement .....	12
1.7	Versioning and Capability Negotiation .....	12
1.8	Vendor-Extensible Fields .....	12
1.9	Standards Assignments.....	12
<b>2</b>	<b>Messages.....</b>	<b>13</b>
2.1	Transport.....	13
2.2	Common Message Syntax .....	13
2.2.1	Namespaces .....	13
2.2.2	Messages.....	14
2.2.3	Elements .....	14
2.2.4	Complex Types.....	14
2.2.4.1	ArrayOfString .....	14
2.2.4.2	RequestInfo .....	14
2.2.4.3	RequestResponse.....	15
2.2.5	Simple Types .....	16
2.2.5.1	ContactFlags .....	16
2.2.5.2	DistributionGroupFlags .....	16
2.2.5.3	guid .....	17
2.2.5.4	RequestStatus .....	17
2.2.6	Attributes .....	19
2.2.7	Groups .....	19
2.2.8	Attribute Groups.....	19
2.2.9	Common Data Structures .....	19
<b>3</b>	<b>Protocol Details .....</b>	<b>20</b>
3.1	SharepointEmailWSSoap Server Details .....	20
3.1.1	Abstract Data Model.....	20
3.1.2	Timers .....	21
3.1.3	Initialization.....	21
3.1.4	Message Processing Events and Sequencing Rules .....	21
3.1.4.1	ChangeContactsMembershipInDistributionGroup .....	22
3.1.4.1.1	Messages .....	22
3.1.4.1.1.1	ChangeContactsMembershipInDistributionGroupSoapIn .....	22
3.1.4.1.1.2	ChangeContactsMembershipInDistributionGroupSoapOut .....	23
3.1.4.1.2	Elements.....	23
3.1.4.1.2.1	ChangeContactsMembershipInDistributionGroup .....	23
3.1.4.1.2.2	ChangeContactsMembershipInDistributionGroupResponse.....	24
3.1.4.1.3	Complex Types .....	24
3.1.4.1.4	Simple Types .....	24
3.1.4.1.5	Attributes .....	25
3.1.4.1.6	Groups.....	25
3.1.4.1.7	Attribute Groups.....	25
3.1.4.2	ChangeUsersMembershipInDistributionGroup .....	25
3.1.4.2.1	Messages .....	25
3.1.4.2.1.1	ChangeUsersMembershipInDistributionGroupSoapIn .....	26

3.1.4.2.1.2	ChangeUsersMembershipInDistributionGroupSoapOut .....	26
3.1.4.2.2	Elements .....	26
3.1.4.2.2.1	ChangeUsersMembershipInDistributionGroup .....	26
3.1.4.2.2.2	ChangeUsersMembershipInDistributionGroupResponse .....	27
3.1.4.2.3	Complex Types .....	28
3.1.4.2.4	Simple Types .....	28
3.1.4.2.5	Attributes .....	28
3.1.4.2.6	Groups .....	28
3.1.4.2.7	Attribute Groups .....	28
3.1.4.3	CreateContact .....	28
3.1.4.3.1	Messages .....	29
3.1.4.3.1.1	CreateContactSoapIn .....	29
3.1.4.3.1.2	CreateContactSoapOut .....	29
3.1.4.3.2	Elements .....	29
3.1.4.3.2.1	CreateContact .....	30
3.1.4.3.2.2	CreateContactResponse .....	30
3.1.4.3.3	Complex Types .....	31
3.1.4.3.4	Simple Types .....	31
3.1.4.3.5	Attributes .....	31
3.1.4.3.6	Groups .....	31
3.1.4.3.7	Attribute Groups .....	31
3.1.4.4	CreateDistributionGroup .....	31
3.1.4.4.1	Messages .....	32
3.1.4.4.1.1	CreateDistributionGroupSoapIn .....	32
3.1.4.4.1.2	CreateDistributionGroupSoapOut .....	32
3.1.4.4.2	Elements .....	33
3.1.4.4.2.1	CreateDistributionGroup .....	33
3.1.4.4.2.2	CreateDistributionGroupResponse .....	33
3.1.4.4.3	Complex Types .....	34
3.1.4.4.4	Simple Types .....	35
3.1.4.4.5	Attributes .....	35
3.1.4.4.6	Groups .....	35
3.1.4.4.7	Attribute Groups .....	35
3.1.4.5	DeleteContact .....	35
3.1.4.5.1	Messages .....	35
3.1.4.5.1.1	DeleteContactSoapIn .....	36
3.1.4.5.1.2	DeleteContactSoapOut .....	36
3.1.4.5.2	Elements .....	36
3.1.4.5.2.1	DeleteContact .....	36
3.1.4.5.2.2	DeleteContactResponse .....	37
3.1.4.5.3	Complex Types .....	37
3.1.4.5.4	Simple Types .....	37
3.1.4.5.5	Attributes .....	37
3.1.4.5.6	Groups .....	38
3.1.4.5.7	Attribute Groups .....	38
3.1.4.6	DeleteDistributionGroup .....	38
3.1.4.6.1	Messages .....	38
3.1.4.6.1.1	DeleteDistributionGroupSoapIn .....	38
3.1.4.6.1.2	DeleteDistributionGroupSoapOut .....	39
3.1.4.6.2	Elements .....	39
3.1.4.6.2.1	DeleteDistributionGroup .....	39
3.1.4.6.2.2	DeleteDistributionGroupResponse .....	39
3.1.4.6.3	Complex Types .....	40
3.1.4.6.4	Simple Types .....	40
3.1.4.6.5	Attributes .....	41
3.1.4.6.6	Groups .....	41
3.1.4.6.7	Attribute Groups .....	41

3.1.4.7	GetJobStatus.....	41
3.1.4.7.1	Messages .....	42
3.1.4.7.1.1	GetJobStatusSoapIn.....	42
3.1.4.7.1.2	GetJobStatusSoapOut.....	42
3.1.4.7.2	Elements.....	42
3.1.4.7.2.1	GetJobStatus.....	43
3.1.4.7.2.2	GetJobStatusResponse .....	43
3.1.4.7.3	Complex Types .....	44
3.1.4.7.4	Simple Types .....	44
3.1.4.7.5	Attributes .....	44
3.1.4.7.6	Groups.....	44
3.1.4.7.7	Attribute Groups.....	44
3.1.4.8	ModifyContact .....	44
3.1.4.8.1	Messages .....	45
3.1.4.8.1.1	ModifyContactSoapIn .....	45
3.1.4.8.1.2	ModifyContactSoapOut .....	45
3.1.4.8.2	Elements.....	45
3.1.4.8.2.1	ModifyContact .....	46
3.1.4.8.2.2	ModifyContactResponse .....	46
3.1.4.8.3	Complex Types .....	47
3.1.4.8.4	Simple Types .....	47
3.1.4.8.5	Attributes .....	47
3.1.4.8.6	Groups.....	47
3.1.4.8.7	Attribute Groups.....	47
3.1.4.9	ModifyDistributionGroup .....	48
3.1.4.9.1	Messages .....	48
3.1.4.9.1.1	ModifyDistributionGroupSoapIn .....	48
3.1.4.9.1.2	ModifyDistributionGroupSoapOut .....	48
3.1.4.9.2	Elements.....	49
3.1.4.9.2.1	ModifyDistributionGroup .....	49
3.1.4.9.2.2	ModifyDistributionGroupResponse .....	50
3.1.4.9.3	Complex Types .....	51
3.1.4.9.4	Simple Types .....	51
3.1.4.9.5	Attributes .....	51
3.1.4.9.6	Groups.....	51
3.1.4.9.7	Attribute Groups.....	51
3.1.4.10	RenameDistributionGroup .....	51
3.1.4.10.1	Messages .....	51
3.1.4.10.1.1	RenameDistributionGroupSoapIn .....	52
3.1.4.10.1.2	RenameDistributionGroupSoapOut .....	52
3.1.4.10.2	Elements.....	52
3.1.4.10.2.1	RenameDistributionGroup .....	52
3.1.4.10.2.2	RenameDistributionGroupResponse.....	53
3.1.4.10.3	Complex Types .....	54
3.1.4.10.4	Simple Types .....	54
3.1.4.10.5	Attributes .....	54
3.1.4.10.6	Groups.....	54
3.1.4.10.7	Attribute Groups.....	54
3.1.5	Timer Events.....	54
3.1.6	Other Local Events.....	54
<b>4</b>	<b>Protocol Examples.....</b>	<b>55</b>
4.1	Create and Add a User to a Distribution List .....	55
4.1.1	Create a Distribution List .....	55
4.1.2	Add a User to a Distribution List .....	55
4.2	Create and Add a Contact to a Distribution List .....	56
4.2.1	Create a Contact .....	56

4.2.2	Add a Contact to a Distribution List .....	57
4.3	Modify a Contact .....	57
4.4	Remove a Contact and Rename a Distribution List.....	58
4.4.1	Remove a Contact from a Distribution List .....	58
4.4.2	Delete a Contact.....	59
4.4.3	Change the Name of a Distribution List.....	59
4.5	Modify a Distribution List.....	60
4.6	Delete a Distribution List.....	61
4.7	Check the Status of a Deletion Request.....	62
4.7.1	Delete a Distribution List .....	62
4.7.2	Check the Status of a Job .....	62
<b>5</b>	<b>Security .....</b>	<b>65</b>
5.1	Security Considerations for Implementers .....	65
5.2	Index of Security Parameters .....	65
<b>6</b>	<b>Appendix A: Full WSDL .....</b>	<b>66</b>
<b>7</b>	<b>Appendix B: Product Behavior .....</b>	<b>75</b>
<b>8</b>	<b>Change Tracking.....</b>	<b>76</b>
<b>9</b>	<b>Index.....</b>	<b>78</b>

Preliminary

# 1 Introduction

The SharePoint Email Web Service Protocol is a SOAP-based protocol that enables system administrators to manage information about contacts and groups of contacts that are controlled by **Active Directory Domain Services (AD DS)** or a directory service that is compatible with AD DS. This protocol also enables system administrators to query the status of operations that are defined by this protocol.

Sections 1.8, 2, and 3 of this specification are normative and can contain the terms MAY, SHOULD, MUST, MUST NOT, and SHOULD NOT as defined in [\[RFC2119\]](#). Sections 1.5 and 1.9 are also normative but do not contain those terms. All other sections and examples in this specification are informative.

## 1.1 Glossary

The following terms are specific to this document:

**Active Directory Domain Services (AD DS):** A **directory service (DS)** implemented by a domain controller (DC). The **DS** provides a data store for objects that is distributed across multiple DCs. The DCs interoperate as peers to ensure that a local change to an object replicates correctly across DCs. For more information, see [\[MS-AUTHSOD\]](#) section 1.1.1.5.2 and [\[MS-ADTS\]](#). For information about product versions, see [\[MS-ADTS\]](#) section 1. See also Active Directory.

**authenticated user:** A built-in security group specified in [\[MS-WSO\]](#) whose members include all users that can be authenticated by a computer.

**contact:** A person, company, or other entity that is stored in a directory and is associated with one or more unique identifiers and attributes (2), such as an Internet message address or login name.

**directory service (DS):** A service that stores and organizes information about a computer network's users and network shares, and that allows network administrators to manage users' access to the shares. See also Active Directory.

**distribution list:** A collection of users, computers, contacts, or other groups that is used only for email distribution, and addressed as a single recipient.

**domain account:** A stored set of attributes (2) representing a principal used to authenticate a user or machine to an Active Directory domain.

**email address:** A string that identifies a user and enables the user to receive Internet messages.

**email alias:** A string which is the local-part of a mailbox as specified in [\[RFC2821\]](#).

**endpoint:** A communication port that is exposed by an application server for a specific shared service and to which messages can be addressed.

**globally unique identifier (GUID):** A term used interchangeably with universally unique identifier (UUID) in Microsoft protocol technical documents (TDs). Interchanging the usage of these terms does not imply or require a specific algorithm or mechanism to generate the value. Specifically, the use of this term does not imply or require that the algorithms specified in [\[RFC4122\]](#) or [\[C706\]](#) must be used for generating the **GUID**. See also universally unique identifier (UUID).



**Hypertext Transfer Protocol (HTTP):** An application-level protocol for distributed, collaborative, hypermedia information systems (text, graphic images, sound, video, and other multimedia files) on the World Wide Web.

**Hypertext Transfer Protocol over Secure Sockets Layer (HTTPS):** An extension of **HTTP** that securely encrypts and decrypts webpage requests.

**SOAP:** A lightweight protocol for exchanging structured information in a decentralized, distributed environment. **SOAP** uses XML technologies to define an extensible messaging framework, which provides a message construct that can be exchanged over a variety of underlying protocols. The framework has been designed to be independent of any particular programming model and other implementation-specific semantics. SOAP 1.2 supersedes SOAP 1.1. See [\[SOAP1.2-1/2003\]](#).

**SOAP action:** The HTTP request header field used to indicate the intent of the **SOAP** request, using a URI value. See [\[SOAP1.1\]](#) section 6.1.1 for more information.

**SOAP body:** A container for the payload data being delivered by a SOAP message to its recipient. See [\[SOAP1.2-1/2007\]](#) section 5.3 for more information.

**SOAP fault:** A container for error and status information within a SOAP message. See [\[SOAP1.2-1/2007\]](#) section 5.4 for more information.

**Web Services Description Language (WSDL):** An XML format for describing network services as a set of endpoints that operate on messages that contain either document-oriented or procedure-oriented information. The operations and messages are described abstractly and are bound to a concrete network protocol and message format in order to define an endpoint. Related concrete endpoints are combined into abstract endpoints, which describe a network service. WSDL is extensible, which allows the description of endpoints and their messages regardless of the message formats or network protocols that are used.

**XML namespace:** A collection of names that is used to identify elements, types, and attributes in XML documents identified in a URI reference [\[RFC3986\]](#). A combination of XML namespace and local name allows XML documents to use elements, types, and attributes that have the same names but come from different sources. For more information, see [\[XMLNS-2ED\]](#).

**XML schema:** A description of a type of XML document that is typically expressed in terms of constraints on the structure and content of documents of that type, in addition to the basic syntax constraints that are imposed by XML itself. An XML schema provides a view of a document type at a relatively high level of abstraction.

**MAY, SHOULD, MUST, SHOULD NOT, MUST NOT:** These terms (in all caps) are used as defined in [\[RFC2119\]](#). All statements of optional behavior use either MAY, SHOULD, or SHOULD NOT.

## 1.2 References

### 1.2.1 Normative References

We conduct frequent surveys of the normative references to assure their continued availability. If you have any issue with finding a normative reference, please contact [dochelp@microsoft.com](mailto:dochelp@microsoft.com). We will assist you in finding the relevant information.

[MS-ADA1] Microsoft Corporation, "[Active Directory Schema Attributes A-I](#)".

[MS-ADA3] Microsoft Corporation, "[Active Directory Schema Attributes N-Z](#)".

- [RFC2119] Bradner, S., "Key words for use in RFCs to Indicate Requirement Levels", BCP 14, RFC 2119, March 1997, <http://www.rfc-editor.org/rfc/rfc2119.txt>
- [RFC2616] Fielding, R., Gettys, J., Mogul, J., et al., "Hypertext Transfer Protocol -- HTTP/1.1", RFC 2616, June 1999, <http://www.rfc-editor.org/rfc/rfc2616.txt>
- [SOAP1.1] Box, D., Ehnebuske, D., Kakivaya, G., et al., "Simple Object Access Protocol (SOAP) 1.1", May 2000, <http://www.w3.org/TR/2000/NOTE-SOAP-20000508/>
- [SOAP1.2/1] Gudgin, M., Hadley, M., Mendelsohn, N., Moreau, J., and Nielsen, H.F., "SOAP Version 1.2 Part 1: Messaging Framework", W3C Recommendation, June 2003, <http://www.w3.org/TR/2003/REC-soap12-part1-20030624>
- [SOAP1.2/2] Gudgin, M., Hadley, M., Mendelsohn, N., Moreau, J., and Nielsen, H.F., "SOAP Version 1.2 Part 2: Adjuncts", W3C Recommendation, June 2003, <http://www.w3.org/TR/2003/REC-soap12-part2-20030624>
- [WSDL] Christensen, E., Curbera, F., Meredith, G., and Weerawarana, S., "Web Services Description Language (WSDL) 1.1", W3C Note, March 2001, <http://www.w3.org/TR/2001/NOTE-wsdl-20010315>
- [XMLNS] Bray, T., Hollander, D., Layman, A., et al., Eds., "Namespaces in XML 1.0 (Third Edition)", W3C Recommendation, December 2009, <http://www.w3.org/TR/2009/REC-xml-names-20091208/>
- [XMLSCHEMA1] Thompson, H., Beech, D., Maloney, M., and Mendelsohn, N., Eds., "XML Schema Part 1: Structures", W3C Recommendation, May 2001, <http://www.w3.org/TR/2001/REC-xmlschema-1-20010502/>
- [XMLSCHEMA2] Biron, P.V., Ed. and Malhotra, A., Ed., "XML Schema Part 2: Datatypes", W3C Recommendation, May 2001, <http://www.w3.org/TR/2001/REC-xmlschema-2-20010502/>

## 1.2.2 Informative References

- [C706] The Open Group, "DCE 1.1: Remote Procedure Call", C706, August 1997, <https://www2.opengroup.org/ogsys/catalog/c706>
- [MS-ADTS] Microsoft Corporation, "[Active Directory Technical Specification](#)".
- [MS-AUTHSOD] Microsoft Corporation, "[Authentication Services Protocols Overview](#)".
- [MS-WSO] Microsoft Corporation, "Windows System Overview", [Windows System Overview](#)
- [RFC2818] Rescorla, E., "HTTP Over TLS", RFC 2818, May 2000, <http://www.rfc-editor.org/rfc/rfc2818.txt>
- [RFC2821] Klensin, J., "Simple Mail Transfer Protocol", RFC 2821, April 2001, <http://www.ietf.org/rfc/rfc2821.txt>
- [RFC3986] Berners-Lee, T., Fielding, R., and Masinter, L., "Uniform Resource Identifier (URI): Generic Syntax", STD 66, RFC 3986, January 2005, <http://www.ietf.org/rfc/rfc3986.txt>
- [RFC4122] Leach, P., Mealling, M., and Salz, R., "A Universally Unique Identifier (UUID) URN Namespace", RFC 4122, July 2005, <http://www.ietf.org/rfc/rfc4122.txt>
- [SOAP1.2-1/2003] Gudgin, M., Hadley, M., Mendelsohn, N., et al., "SOAP Version 1.2 Part 1: Messaging Framework", W3C Recommendation, June 2003, <http://www.w3.org/TR/2003/REC-soap12-part1-20030624>

[SOAP1.2-1/2007] Gudgin, M., Hadley, M., Mendelsohn, N., et al., "SOAP Version 1.2 Part 1: Messaging Framework (Second Edition)", W3C Recommendation 27, April 2007, <http://www.w3.org/TR/2007/REC-soap12-part1-20070427/>

[XMLNS-2ED] World Wide Web Consortium, "Namespaces in XML 1.0 (Second Edition)", August 2006, <http://www.w3.org/TR/2006/REC-xml-names-20060816/>

### 1.3 Overview

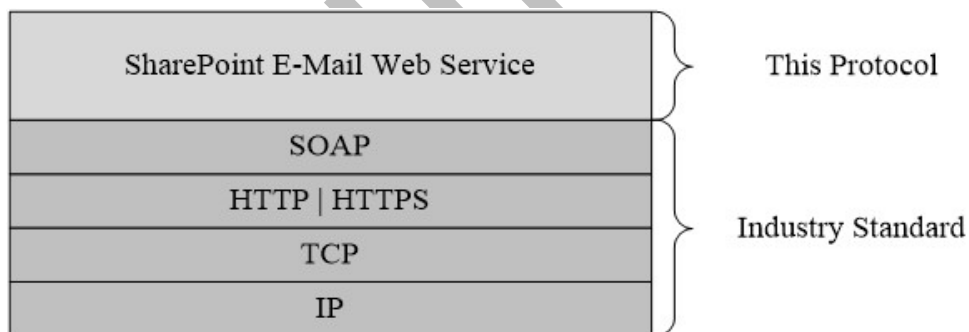
This protocol enables system administrators to manage **contacts** and groups of contacts that are controlled by either **Active Directory Domain Services (AD DS)** or a **directory service (DS)** that is compatible with AD DS. System administrators can use this protocol to do the following:

- Create, modify, and delete contacts.
- Add, update, and remove contacts from existing groups of contacts, which are referred to as **distribution lists**.
- Create, update, and delete distribution lists.
- Check the status of operations that are defined by this protocol.
- Integrate a protocol server with AD DS.

### 1.4 Relationship to Other Protocols

This protocol uses the **SOAP** message protocol for formatting request and response messages, as described in [\[SOAP1.1\]](#), [\[SOAP1.2/1\]](#) and [\[SOAP1.2/2\]](#). It transmits those messages by using **HTTP**, as described in [\[RFC2616\]](#), or **Hypertext Transfer Protocol over Secure Sockets Layer (HTTPS)**, as described in [\[RFC2818\]](#).

The following diagram shows the underlying messaging and transport stack used by the protocol:



**Figure 1: This protocol in relation to other protocols**

### 1.5 Prerequisites/Preconditions

This protocol operates against a site that is identified by a URL that is known by protocol clients. The protocol server **endpoint** is formed by appending `"/_vti_bin/SharepointEmailWS.asmx"` to the URL of the site, for example `"http://www.example.com/Repository/_vti_bin/SharepointEmailWS.asmx"`.

This protocol assumes that authentication has been performed by the underlying protocols.

## **1.6 Applicability Statement**

This protocol is designed to enable a protocol client to create, modify, or delete contacts and distribution lists that are controlled by either AD DS or a DS that is compatible with AD DS. It also enables a protocol server to require external approval for operations that are defined by this protocol.

This protocol does not enable a protocol client to query the state of a DS.

## **1.7 Versioning and Capability Negotiation**

This protocol uses multiple transports as specified in section [2.1](#).

## **1.8 Vendor-Extensible Fields**

None.

## **1.9 Standards Assignments**

None.

Preliminary

## 2 Messages

### 2.1 Transport

Protocol servers MUST support Simple Object Access Protocol (SOAP) over Hypertext Transfer Protocol (HTTP). Protocol servers SHOULD additionally support SOAP over Hypertext Transfer Protocol over Secure Sockets Layer (HTTPS) to help secure communications with protocol clients.

Protocol messages MUST be formatted as specified in either [\[SOAP1.1\]](#) section 4 or [\[SOAP1.2/1\]](#) section 5. Server faults MUST be returned by using either HTTP status codes, as specified in [\[RFC2616\]](#) section 10, or **SOAP faults**, as specified in [\[SOAP1.1\]](#) section 4.4 or [\[SOAP1.2/1\]](#) section 5.4.

### 2.2 Common Message Syntax

This section contains common definitions that are used by this protocol. The syntax of the definitions uses **XML schema**, as specified in [\[XMLSCHEMA1\]](#) and [\[XMLSCHEMA2\]](#), and **WSDL**, as specified in [\[WSDL\]](#).

#### 2.2.1 Namespaces

This specification defines and references various **XML namespaces** using the mechanisms specified in [\[XMLNS\]](#). Although this specification associates a specific XML namespace prefix for each XML namespace that is used, the choice of any particular XML namespace prefix is implementation-specific and not significant for interoperability. These namespaces are described in the following table.

Prefix	Namespace URI	Reference
Soap	<a href="http://schemas.xmlsoap.org/wsdl/soap/">http://schemas.xmlsoap.org/wsdl/soap/</a>	<a href="#">[SOAP1.1]</a>
Tns	<a href="http://microsoft.com/webservices/SharePoint/SharepointEmailWS/">http://microsoft.com/webservices/SharePoint/SharepointEmailWS/</a>	
s1	<a href="http://microsoft.com/wsdl/types/">http://microsoft.com/wsdl/types/</a>	
S	<a href="http://www.w3.org/2001/XMLSchema">http://www.w3.org/2001/XMLSchema</a>	<a href="#">[XMLSCHEMA1]</a> <a href="#">[XMLSCHEMA2]</a>
soap12	<a href="http://schemas.xmlsoap.org/wsdl/soap12/">http://schemas.xmlsoap.org/wsdl/soap12/</a>	<a href="#">[SOAP1.2/1]</a> <a href="#">[SOAP1.2/2]</a>
WsdL	<a href="http://schemas.xmlsoap.org/wsdl/">http://schemas.xmlsoap.org/wsdl/</a>	<a href="#">[WSDL]</a>

## 2.2.2 Messages

This specification does not define any common WSDL message definitions.

## 2.2.3 Elements

This specification does not define any common XML schema element definitions.

## 2.2.4 Complex Types

The following table summarizes the set of common XML schema complex type definitions defined by this specification. XML schema complex type definitions that are specific to a particular operation are described with the operation.

Complex type	Description
<b>ArrayOfString</b>	Stores an array of strings.
<b>RequestInfo</b>	Specifies information about a request to create, modify, or delete a distribution list.
<b>RequestResponse</b>	Contains return information for a request.

### 2.2.4.1 ArrayOfString

The **ArrayOfString** complex type contains an array of string values. It is used by the **ChangeContactsMembershipInDistributionGroup** (section [3.1.4.1](#)) and **ChangeUsersMembershipInDistributionGroup** (section [3.1.4.2](#)) operations.

```
<s:complexType name="ArrayOfString">  
  <s:sequence>  
    <s:element name="string" type="s:string" nillable="true" minOccurs="0" maxOccurs="unbounded"  
    />  
  </s:sequence>  
</s:complexType>
```

**string:** A string variable that contains e-mail aliases of the contacts (3) or **domain accounts** for the users.

### 2.2.4.2 RequestInfo

The **RequestInfo** complex type contains information about a request to create, modify, or delete a distribution list. It is used by the following operations:

- **CreateDistributionGroup** (section [3.1.4.4](#))
- **DeleteDistributionGroup** (section [3.1.4.6](#))
- **ModifyDistributionGroup** (section [3.1.4.9](#))

- **RenameDistributionGroup** (section [3.1.4.10](#))

```
<s:complexType name="RequestInfo">
  <s:sequence>
    <s:element name="RequestorEmail" type="s:string" />
    <s:element name="Justification" type="s:string" minOccurs="0" />
    <s:element name="RequestId" type="s1:guid" />
  </s:sequence>
</s:complexType>
```

**RequestorEmail:** The **e-mail address** of the user who is attempting to create, modify, or delete the distribution list. This value **MUST** be 255 or fewer characters. Additional limitations on this value are defined in [\[MS-ADA1\]](#) section [2.110](#).

**Justification:** The requestor's reasons for making the request. This value **MUST** be 4,000 or fewer characters.

**RequestId:** A **GUID** that identifies the request. This value **MUST** be ignored by the protocol server.

### 2.2.4.3 RequestResponse

The **RequestResponse** complex type specifies return information for a request. It is used by the following operations:

- **CreateDistributionGroup** (section [3.1.4.4](#))
- **DeleteDistributionGroup** (section [3.1.4.6](#))
- **GetJobStatus** (section [3.1.4.7](#))
- **ModifyDistributionGroup** (section [3.1.4.9](#))
- **RenameDistributionGroup** (section [3.1.4.10](#))

```
<s:complexType name="RequestResponse">
  <s:sequence>
    <s:element name="JobID" type="s:int" />
    <s:element name="Comment" type="s:string" minOccurs="0" />
    <s:element name="JobStatus" type="tns:RequestStatus" />
    <s:element name="Alias" type="s:string" minOccurs="0" />
  </s:sequence>
</s:complexType>
```

**JobID:** An integer that identifies a newly created job or an existing job whose status is being retrieved by the **GetJobStatus** operation. If a new job was created, this value **MUST** be greater than 0. If the job creation failed and **JobStatus** equals **AccessDenied**, this value **MUST** be -1. Otherwise, if the job creation failed or the request was automatically approved, this value **MUST** be 0.

**Comment:** A string that contains additional information about the request.

**JobStatus:** A **RequestStatus** simple type (section [2.2.5.3](#)) that contains the status of the request.

**Alias:** The **e-mail alias** of the contact or distribution list that the request applies to.

## 2.2.5 Simple Types

The following table summarizes the set of common XML schema simple type definitions defined by this specification. XML schema simple type definitions that are specific to a particular operation are described with the operation.

Simple type	Description
<b>ContactFlags</b>	Enumerates the properties and constraints on a contact.
<b>DistributionGroupFlags</b>	Enumerates the properties and constraints on a distribution list.
<b>guid</b>	Specifies the unique identifier.
<b>RequestStatus</b>	Enumerates the status of a request message.

### 2.2.5.1 ContactFlags

The **ContactFlags** simple type enumerates properties and constraints on a contact. It is used by the **CreateContact** (section [3.1.4.3](#)) and **ModifyContact** (section [3.1.4.8](#)) operations.

```
<s:simpleType name="ContactFlags">  
<s:restriction base="s:string">  
<s:enumeration value="None"/>  
<s:enumeration value="OnlyAllowAuthenticatedEmail"/>  
</s:restriction>  
</s:simpleType>
```

The following table defines the allowable values for the **ContactFlags** simple type.

Value	Description
None	No flags are associated with the contact.
OnlyAllowAuthenticatedEmail	The contact is allowed to receive e-mail messages only from accounts that are associated with authenticated users.

### 2.2.5.2 DistributionGroupFlags

The **DistributionGroupFlags** simple type enumerates properties and constraints on a distribution list. It is used by the **CreateDistributionGroup** (section [3.1.4.4](#)) and the **ModifyDistributionGroup** (section [3.1.4.9](#)) operations.



```

<s:simpleType name="DistributionGroupFlags">
  <s:restriction base="s:string">
    <s:enumeration value="None"/>
    <s:enumeration value="OnlyAllowAuthenticatedEmail"/>
  </s:restriction>
</s:simpleType>

```

The following table defines the allowable values for the **DistributionGroupFlags** simple type.

Value	Description
None	No flags are associated with the distribution list.
OnlyAllowAuthenticatedEmail	The distribution list is allowed to receive e-mail messages only from <b>authenticated users</b> .

### 2.2.5.3 guid

The **guid** simple type specifies the unique identifier. [<1>](#)

```

<s:simpleType name="guid">
  <s:restriction base="s:string">
    <s:pattern value="[0-9a-fA-F]{8}-[0-9a-fA-F]{4}-[0-9a-fA-F]{4}-[0-9a-fA-F]{4}-[0-9a-fA-F]{12}" />
  </s:restriction>
</s:simpleType>

```

### 2.2.5.4 RequestStatus

The **RequestStatus** simple type enumerates the status of a request. It is used by the following operations:

- **ChangeContactsMembershipInDistributionGroup** (section [3.1.4.1](#))
- **ChangeUsersMembershipInDistributionGroup** (section [3.1.4.2](#))
- **CreateContact** (section [3.1.4.3](#))
- **DeleteContact** (section [3.1.4.5](#))
- **ModifyContact** (section [3.1.4.8](#))

It is also used by the **RequestResponse** complex type (section [2.2.4.3](#)).

```

<s:simpleType name="RequestStatus">
  <s:restriction base="s:string">
    <s:enumeration value="Success"/>
    <s:enumeration value="PendingApproval"/>
    <s:enumeration value="ApprovalDenied"/>
    <s:enumeration value="DuplicateAlias"/>
  </s:restriction>
</s:simpleType>

```

```

<s:enumeration value="InvalidArgument"/>
<s:enumeration value="ServiceNotConfigured"/>
<s:enumeration value="AccessDenied"/>
<s:enumeration value="ServerUnavailable"/>
<s:enumeration value="ObjectNotFound"/>
<s:enumeration value="InvalidMember"/>
<s:enumeration value="InternalError"/>
</s:restriction>
</s:simpleType>

```

The following table defines the allowable values for the **RequestStatus** simple type.

Value	Description
Success	The operation finished successfully.
PendingApproval	The operation requires approval and approval has not been granted or denied yet.
ApprovalDenied	The operation requires approval and approval was denied.
DuplicateAlias	The specified e-mail address already exists in the DS.
InvalidArgument	One or more arguments are not valid.
ServiceNotConfigured	The DS is not configured.
AccessDenied	The protocol client does not have sufficient permission to access one or more of the objects that are needed for the operation.
ServerUnavailable	A protocol server that is needed for the operation cannot be accessed.
ObjectNotFound	The specified distribution list or contact cannot be found.
InvalidMember	One or more of the specified e-mail addresses is not valid.
InternalError	The operation failed because an unexpected internal error occurred.

### **2.2.6 Attributes**

This specification does not define any common XML schema attribute definitions.

### **2.2.7 Groups**

This specification does not define any common XML schema group definitions.

### **2.2.8 Attribute Groups**

This specification does not define any common XML schema attribute group definitions.

### **2.2.9 Common Data Structures**

This specification does not define any common XML schema data structures.

Preliminary

### 3 Protocol Details

The client side of this protocol is simply a pass-through. That is, no additional timers or other state is required on the client side of this protocol. Calls made by the higher-layer protocol or application are passed directly to the transport, and the results returned by the transport are passed directly back to the higher-layer protocol or application.

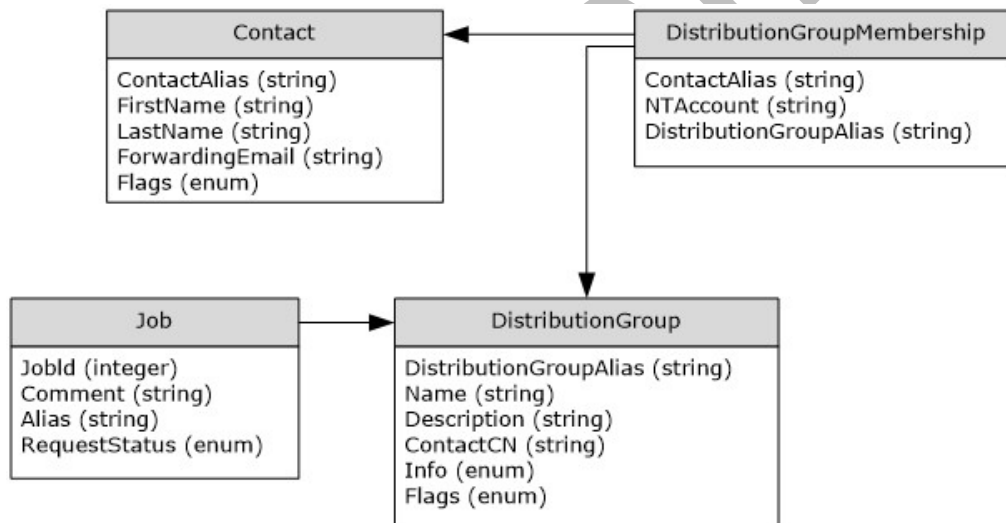
This protocol enables protocol servers to perform implementation-specific authorization checks and to notify protocol clients of authorization faults by using either HTTP status codes or SOAP faults. Except where specified otherwise, protocol clients SHOULD interpret HTTP status codes as specified in [\[RFC2616\]](#) section 10. Except where specified otherwise, SOAP faults are not significant for interoperability and protocol clients can interpret them in an implementation-specific manner.

#### 3.1 SharepointEmailWSSoap Server Details

##### 3.1.1 Abstract Data Model

This section describes a conceptual model of possible data organization that an implementation maintains to participate in this protocol. The described organization is provided to facilitate the explanation of how the protocol behaves. This document does not mandate that implementations adhere to this model as long as their external behavior is consistent with that described in this document.

The following diagram shows the server data structure.



**Figure 2: Data structure on a protocol server**

The back-end, data storage system maintains the following sets of data for this protocol.

**Contact:** Contains information about contacts. Each contact (3) is uniquely identified by an e-mail alias that is assigned to it by a protocol client.

**DistributionGroup:** Contains information about distribution lists. Each distribution list is uniquely identified by an e-mail alias that is assigned to it by a protocol client.

**Job:** Contains information about changes that were requested by a protocol client. Each job is uniquely identified by a job identifier that is assigned to it by a protocol server.

**DistributionGroupMembership:** Contains information about contacts that are members of a distribution list.

### 3.1.2 Timers

None.

### 3.1.3 Initialization

None.

### 3.1.4 Message Processing Events and Sequencing Rules

The following table summarizes the list of WSDL operations as defined by this specification:

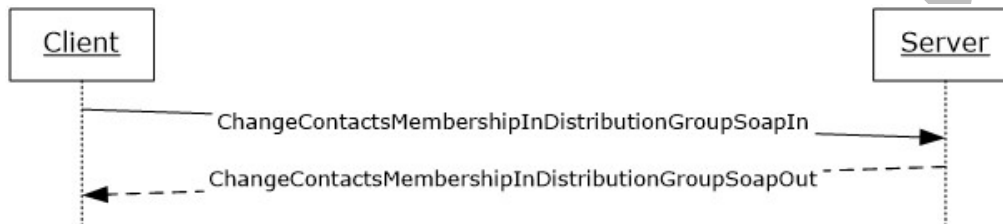
WSDL operation	Description
<b>ChangeContactsMembershipInDistributionGroup</b>	Adds or removes contacts from a distribution list.
<b>ChangeUsersMembershipInDistributionGroup</b>	Adds or removes users from a distribution list.
<b>CreateContact</b>	Creates a new contact.
<b>CreateDistributionGroup</b>	Creates a new distribution list.
<b>DeleteContact</b>	Deletes a contact.
<b>DeleteDistributionGroup</b>	Deletes a distribution list.
<b>GetJobStatus</b>	Requests an update on the status of a request that was pending approval when it was last checked.
<b>ModifyContact</b>	Changes information about a contact.
<b>ModifyDistributionGroup</b>	Changes information about a distribution list.
<b>RenameDistributionGroup</b>	Changes the name of a distribution list.

### 3.1.4.1 ChangeContactsMembershipInDistributionGroup

The **ChangeContactsMembershipInDistributionGroup** operation is used to add and remove contacts from a distribution list.

```
<wsdl:operation name="ChangeContactsMembershipInDistributionGroup">
<wsdl:input message="tns:ChangeContactsMembershipInDistributionGroupSoapIn" />
<wsdl:output message="tns:ChangeContactsMembershipInDistributionGroupSoapOut" />
</wsdl:operation>
```

The protocol client sends a **ChangeContactsMembershipInDistributionGroupSoapIn** request message, and the protocol server responds with a **ChangeContactsMembershipInDistributionGroupSoapOut** response message. The following diagram shows the message sequence.



**Figure 3: Message sequence for a ChangeContactsMembershipInDistributionGroup operation**

#### 3.1.4.1.1 Messages

The following table summarizes the set of WSDL message definitions that are specific to this operation.

Message	Description
<b>ChangeContactsMembershipInDistributionGroupSoapIn</b>	A request to initiate a <b>ChangeContactsMembershipInDistributionGroup</b> operation.
<b>ChangeContactsMembershipInDistributionGroupSoapOut</b>	A response from the protocol server at completion of the <b>ChangeContactsMembershipInDistributionGroup</b> operation.

##### 3.1.4.1.1.1 ChangeContactsMembershipInDistributionGroupSoapIn

This is the request message for a **ChangeContactsMembershipInDistributionGroup** operation.

The **SOAP action** value of the message is defined as follows.

```
http://microsoft.com/webservices/SharePoint/SharepointEmailWS/ChangeContactsMembershipInDistributionGroup
```

The **SOAP body** contains a **ChangeContactsMembershipInDistributionGroup** element.

#### 3.1.4.1.1.2 ChangeContactsMembershipInDistributionGroupSoapOut

This is the response message for a **ChangeContactsMembershipInDistributionGroup** operation.

The SOAP action value of the message is defined as follows.

```
http://microsoft.com/webservices/SharePoint/SharepointEmailWS/ChangeContactsMembershipInDistributionGroup
```

The SOAP body contains a **ChangeContactsMembershipInDistributionGroupResponse** element.

#### 3.1.4.1.2 Elements

The following table summarizes the XML schema element definitions that are specific to this operation.

Element	Description
<b>ChangeContactsMembershipInDistributionGroup</b>	Body of the <b>ChangeContactsMembershipInDistributionGroupSoapIn</b> message.
<b>ChangeContactsMembershipInDistributionGroupResponse</b>	Body of the <b>ChangeContactsMembershipInDistributionGroupSoapOut</b> message.

#### 3.1.4.1.2.1 ChangeContactsMembershipInDistributionGroup

The definition of the **ChangeContactsMembershipInDistributionGroup** element is as follows.

```
<s:element name="ChangeContactsMembershipInDistributionGroup">  
<s:complexType>  
<s:sequence>  
<s:element name="Alias" type="s:string" />  
<s:element name="AddListForContacts" type="tns:ArrayOfString" minOccurs="0" />  
<s:element name="DeleteListForContacts" type="tns:ArrayOfString" minOccurs="0" />  
<s:element name="DeleteAllCurrentMembers" type="s:boolean" />  
</s:sequence>  
</s:complexType>  
</s:element>
```

**Alias:** The e-mail alias of the distribution list. This value MUST be 255 or fewer characters. Additional limitations on this value are specified in [\[MS-ADA1\]](#) section [2.110](#).

**AddListForContacts:** An array that contains the e-mail aliases of the contacts to add.

**DeleteListForContacts:** An array that contains the e-mail aliases of the contacts to remove.

**DeleteAllCurrentMembers:** A Boolean value that indicates whether to remove all members from the distribution list or only the contacts specified by the **DeleteListForContacts** element. If this value is **true**, the **DeleteListForContacts** element MUST be ignored by the server.

The addition of contacts to the distribution group MUST occur after all of the deletion requests are processed.

### 3.1.4.1.2.2 ChangeContactsMembershipInDistributionGroupResponse

The definition of the **ChangeContactsMembershipInDistributionGroupResponse** element is as follows.

```
<s:element name="ChangeContactsMembershipInDistributionGroupResponse">
  <s:complexType>
    <s:sequence>
      <s:element name="ChangeContactsMembershipInDistributionGroupResult"
        type="tns:RequestStatus"/>
    </s:sequence>
  </s:complexType>
</s:element>
```

**ChangeContactsMembershipInDistributionGroupResult:** The protocol server MUST return a **RequestStatus** simple type (section [2.2.5.3](#)) in the response message. The response MUST contain one of the values described in the following table.

Value	Description
RequestStatus.InvalidMember	The value of the <b>DeleteAllCurrentMembers</b> element is "FALSE" and one of the e-mail aliases specified in the <b>DeleteListForContacts</b> element either cannot be found or is not a valid member of the distribution list.
RequestStatus.ObjectNotFound	The specified e-mail alias cannot be found.
RequestStatus.AccessDenied	The protocol client does not have sufficient permission to access one or more of the objects that are needed for the operation.
RequestStatus.ServerUnavailable	A protocol server that is required for the operation cannot be accessed.
RequestStatus.InternalError	The operation failed because an unexpected internal error occurred.
RequestStatus.Success	The operation finished successfully.

### 3.1.4.1.3 Complex Types

None.

### 3.1.4.1.4 Simple Types

None.



### 3.1.4.1.5 Attributes

None.

### 3.1.4.1.6 Groups

None.

### 3.1.4.1.7 Attribute Groups

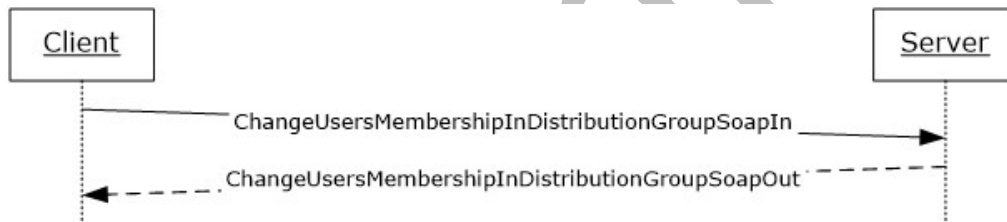
None.

### 3.1.4.2 ChangeUsersMembershipInDistributionGroup

The **ChangeUsersMembershipInDistributionGroup** operation is used to add and remove users from a distribution list.

```
<wsdl:operation name="ChangeUsersMembershipInDistributionGroup">
  <wsdl:input message="tns:ChangeUsersMembershipInDistributionGroupSoapIn" />
  <wsdl:output message="tns:ChangeUsersMembershipInDistributionGroupSoapOut" />
</wsdl:operation>
```

The protocol client sends a **ChangeUsersMembershipInDistributionGroupSoapIn** request message and the protocol server responds with a **ChangeUsersMembershipInDistributionGroupSoapOut** response message. The following diagram shows the message sequence.



**Figure 4: Message sequence for a ChangeUsersMembershipInDistributionGroup operation**

#### 3.1.4.2.1 Messages

The following table summarizes the set of WSDL message definitions that are specific to this operation.

Message	Description
<b>ChangeUsersMembershipInDistributionGroupSoapIn</b>	A request to initiate a <b>ChangeUsersMembershipInDistributionGroup</b> operation.
<b>ChangeUsersMembershipInDistributionGroupSoapOut</b>	A response from the protocol server at completion of the <b>ChangeUsersMembershipInDistributionGroup</b> operation.

### 3.1.4.2.1.1 ChangeUsersMembershipInDistributionGroupSoapIn

This is the request message for a **ChangeUsersMembershipInDistributionGroup** operation.

The SOAP action value of the message is defined as follows.

```
http://microsoft.com/webservices/SharePoint/SharepointEmailWS/ChangeUsersMembershipInDistributionGroup
```

The SOAP body contains a **ChangeUsersMembershipInDistributionGroup** element.

### 3.1.4.2.1.2 ChangeUsersMembershipInDistributionGroupSoapOut

This is the response message for a **ChangeUsersMembershipInDistributionGroup** operation.

The SOAP action value of the message is defined as follows.

```
http://microsoft.com/webservices/SharePoint/SharepointEmailWS/ChangeUsersMembershipInDistributionGroup
```

The SOAP body contains a **ChangeUsersMembershipInDistributionGroupResponse** element.

### 3.1.4.2.2 Elements

The following table summarizes the XML schema element definitions that are specific to this operation.

Element	Description
<b>ChangeUsersMembershipInDistributionGroup</b>	Body of the <b>ChangeUsersMembershipInDistributionGroupSoapIn</b> message.
<b>ChangeUsersMembershipInDistributionGroupResponse</b>	Body of the <b>ChangeUsersMembershipInDistributionGroupSoapOut</b> message.

### 3.1.4.2.2.1 ChangeUsersMembershipInDistributionGroup

The definition of the **ChangeUsersMembershipInDistributionGroup** element is as follows.

```
<s:element name="ChangeUsersMembershipInDistributionGroup">
  <s:complexType>
    <s:sequence>
      <s:element name="Alias" type="s:string" minOccurs="0"/>
      <s:element name="AddNt4NameList" type="tns:ArrayOfString" minOccurs="0"/>
      <s:element name="DeleteNt4NameList" type="tns:ArrayOfString" minOccurs="0"/>
      <s:element name="DeleteAllCurrentMembers" type="s:boolean"/>
    </s:sequence>
  </s:complexType>
```

</s:element>

**Alias:** The e-mail alias of the distribution list. This value MUST be 255 or fewer characters. Additional limitations on this value are specified in [\[MS-ADA1\]](#) section [2.110](#).

**AddNt4NameList:** An array that contains the domain accounts for the users to add. This can be NULL.

**DeleteNt4NameList:** An array that contains the domain accounts for the users to remove. This can be NULL.

**DeleteAllCurrentMembers:** A Boolean value that indicates whether to remove all users from the distribution list or only the users specified by the **DeleteNt4NameList** element. If this value is **true**, the **DeleteListForContacts** element MUST be ignored.

The addition of users to the distribution group MUST occur after all of the deletion requests are processed.

### 3.1.4.2.2 ChangeUsersMembershipInDistributionGroupResponse

The definition of the **ChangeUsersMembershipInDistributionGroupResponse** element is as follows.

```
<s:element name="ChangeUsersMembershipInDistributionGroupResponse">
  <s:complexType>
    <s:sequence>
      <s:element name="ChangeUsersMembershipInDistributionGroupResult" type="tns:RequestStatus"/>
    </s:sequence>
  </s:complexType>
</s:element>
```

**ChangeUsersMembershipInDistributionGroupResult:** The protocol server MUST return a **RequestStatus** simple type (section [2.2.5.3](#)) in the response message. The response MUST contain one of the values described in the following table.

Value	Description
RequestStatus.ObjectNotFound	The specified <b>e-mail alias</b> cannot be found in the DS.
RequestStatus.AccessDenied	The protocol client does not have sufficient permission to access one or more of the objects that are needed for the operation.
RequestStatus.ServerUnavailable	A protocol server that is required for the operation cannot be accessed.

Value	Description
RequestStatus.InternalError	The operation failed because an unexpected internal error occurred or one of the <b>e-mail aliases</b> specified in the <b>DeleteNameList</b> element either cannot be found or is not a valid member of the <b>distribution list</b> .
RequestStatus.Success	The valid specified accounts were added successfully. Invalid accounts were not added.

### 3.1.4.2.3 Complex Types

None.

### 3.1.4.2.4 Simple Types

None.

### 3.1.4.2.5 Attributes

None.

### 3.1.4.2.6 Groups

None.

### 3.1.4.2.7 Attribute Groups

None.

### 3.1.4.3 CreateContact

The **CreateContact** operation is used to add a contact to a DS.

```
<wsdl:operation name="CreateContact">
  <wsdl:input message="tns:CreateContactSoapIn" />
  <wsdl:output message="tns:CreateContactSoapOut" />
</wsdl:operation>
```

The protocol client sends a **CreateContactSoapIn** request message and the protocol server responds with a **CreateContactSoapOut** response message. The following diagram shows the message sequence.



**Figure 5: Message sequence for a CreateContact operation**

### 3.1.4.3.1 Messages

The following table summarizes the set of WSDL message definitions that are specific to this operation.

Message	Description
<b>CreateContactSoapIn</b>	A request to initiate a <b>CreateContact</b> operation.
<b>CreateContactSoapOut</b>	A response from the protocol server at completion of the <b>CreateContact</b> operation.

#### 3.1.4.3.1.1 CreateContactSoapIn

This is the request message for a **CreateContact** operation.

The SOAP action value of the message is defined as follows.

```
http://microsoft.com/webservices/SharePoint/SharepointEmailWS/CreateContact
```

The SOAP body contains a **CreateContact** element.

#### 3.1.4.3.1.2 CreateContactSoapOut

This is the response message for a **CreateContact** operation.

The SOAP action value of the message is defined as follows.

```
http://microsoft.com/webservices/SharePoint/SharepointEmailWS/CreateContact
```

The SOAP body contains a **CreateContactResponse** element.

### 3.1.4.3.2 Elements

The following table summarizes the XML schema element definitions that are specific to this operation.

Element	Description
<b>CreateContact</b>	Body of the <b>CreateContactSoapIn</b> message.
<b>CreateContactResponse</b>	Body of the <b>CreateContactSoapOut</b> message.

### 3.1.4.3.2.1 CreateContact

The definition of the **CreateContact** element is as follows.

```
<s:element name="CreateContact">
  <s:complexType>
    <s:sequence>
      <s:element name="Alias" type="s:string" />
      <s:element name="FirstName" type="s:string" />
      <s:element name="LastName" type="s:string" />
      <s:element name="ForwardingEmail" type="s:string" />
      <s:element name="Flags" type="tns:ContactFlags" />
    </s:sequence>
  </s:complexType>
</s:element>
```

**Alias:** The e-mail alias of the contact. Limitations on this value are specified in [\[MS-ADA1\]](#) section [2.110](#). Additionally, this value **MUST** consist of 255 or fewer characters.

**FirstName:** The first name of the contact. Limitations on this value are specified in [\[MS-ADA1\]](#) section [2.273](#).

**LastName:** The last name of the contact. Limitations on this value are specified in [\[MS-ADA3\]](#) section [2.275](#).

**ForwardingEmail:** The e-mail address where e-mail messages are sent for the contact.

**Flags:** A **ContactFlags** simple type (section [2.2.5.1](#)) that contains any additional properties or constraints on the contact.

### 3.1.4.3.2.2 CreateContactResponse

The definition of the **CreateContactResponse** element is as follows.

```
<s:element name="CreateContactResponse">
  <s:complexType>
    <s:sequence>
      <s:element name="CreateContactResult" type="tns:RequestStatus"/>
    </s:sequence>
  </s:complexType>
</s:element>
```

**CreateContactResult:** The protocol server **MUST** return a **RequestStatus** simple type (section [2.2.5.3](#)) in the response message. The response **MUST** contain one of the values described in the following table.

Value	Description
RequestStatus.ServiceNotConfigured	The DS is not configured.
RequestStatus.InvalidArgument	The specified e-mail alias contains zero characters or a semicolon (;).
RequestStatus.DuplicateAlias	The specified e-mail alias already exists in the DS.
RequestStatus.AccessDenied	The protocol client does not have sufficient permission to access one or more of the objects that are needed for the operation.
RequestStatus.ServerUnavailable	A protocol server that is needed for the operation cannot be accessed.
RequestStatus.InternalError	The operation failed because an unexpected internal error occurred.
RequestStatus.Success	The operation finished successfully.

### 3.1.4.3.3 Complex Types

None.

### 3.1.4.3.4 Simple Types

None.

### 3.1.4.3.5 Attributes

None.

### 3.1.4.3.6 Groups

None.

### 3.1.4.3.7 Attribute Groups

None.

### 3.1.4.4 CreateDistributionGroup

The **CreateDistributionGroup** operation is used to create a distribution list in a DS.

```
<wsdl:operation name="CreateDistributionGroup">
  <wsdl:input message="tns:CreateDistributionGroupSoapIn" />
  <wsdl:output message="tns:CreateDistributionGroupSoapOut" />
</wsdl:operation>
```

</wsdl:operation>

The protocol client sends a **CreateDistributionGroupSoapIn** request message and the protocol server responds with a **CreateDistributionGroupSoapOut** response message. The following diagram shows the message sequence.



**Figure 6: Message sequence for a CreateDistributionGroup operation**

### 3.1.4.4.1 Messages

The following table summarizes the set of WSDL message definitions that are specific to this operation.

Message	Description
<b>CreateDistributionGroupSoapIn</b>	A request to initiate a <b>CreateDistributionGroup</b> operation.
<b>CreateDistributionGroupSoapOut</b>	A response from the protocol server at completion of the <b>CreateDistributionGroup</b> operation.

#### 3.1.4.4.1.1 CreateDistributionGroupSoapIn

This is the request message for a **CreateDistributionGroup** operation.

The SOAP action value of the message is defined as follows.

`http://microsoft.com/webservices/SharePoint/SharepointEmailWS/CreateDistributionGroup`

The SOAP body contains a **CreateDistributionGroup** element.

#### 3.1.4.4.1.2 CreateDistributionGroupSoapOut

This is the response message for a **CreateDistributionGroup** operation.

The SOAP action value of the message is defined as follows.

`http://microsoft.com/webservices/SharePoint/SharepointEmailWS/CreateDistributionGroup`

The SOAP body contains a **CreateDistributionGroupResponse** element.



### 3.1.4.4.2 Elements

The following table summarizes the XML schema element definitions that are specific to this operation.

Element	Description
<b>CreateDistributionGroup</b>	Body of the <b>CreateDistributionGroupSoapIn</b> message.
<b>CreateDistributionGroupResponse</b>	Body of the <b>CreateDistributionGroupSoapOut</b> message.

#### 3.1.4.4.2.1 CreateDistributionGroup

The definition of the **CreateDistributionGroup** element is as follows.

```
<s:element name="CreateDistributionGroup">
  <s:complexType>
    <s:sequence>
      <s:element name="Alias" type="s:string" />
      <s:element name="Name" type="s:string" />
      <s:element name="Description" type="s:string" minOccurs="0" />
      <s:element name="ContactCN" type="s:string" minOccurs="0" />
      <s:element name="Info" type="tns:RequestInfo" />
      <s:element name="Flags" type="tns:DistributionGroupFlags" />
    </s:sequence>
  </s:complexType>
</s:element>
```

**Alias:** The e-mail alias of the distribution list. This value **MUST** be 255 or fewer characters. Additional limitations enforced on this value by the DS are specified in [\[MS-ADA1\]](#) section [2.110](#), which further restricts the number of characters to the "rangeUpper" value.

**Name:** The display name of the distribution list. This value **MUST** be 255 or fewer characters. Additional limitations on this value are specified in [\[MS-ADA1\]](#) section [2.175](#).

**Description:** The description of the distribution group. This value **MUST** be 4,000 or fewer characters.

**ContactCN:** The e-mail alias of the contact to add to the distribution list. This value **MUST** be 255 or fewer characters. Additional limitations on this value are specified in [\[MS-ADA1\]](#) section [2.110](#).

**Info:** A **RequestInfo** complex type (section [2.2.4.2](#)) that contains additional information about the request to create the distribution list.

**Flags:** A **DistributionGroupFlags** simple type (section [2.2.5.2](#)) that contains validation properties of the distribution list.

#### 3.1.4.4.2.2 CreateDistributionGroupResponse

The definition of the **CreateDistributionGroupResponse** element is as follows.

```
<s:element name="CreateDistributionGroupResponse">
  <s:complexType>
```

```

<s:sequence>
<s:element name="CreateDistributionGroupResult" type="tns:RequestResponse" />
</s:sequence>
</s:complexType>
</s:element>

```

**CreateDistributionGroupResult:** The protocol server **MUST** return a **RequestResponse** complex type (section [2.2.4.3](#)). The **JobStatus** element of the **RequestResponse** type **MUST** contain one of the values described in the following table.

Value	Description
RequestStatus.ServiceNotConfigured	The DS is not configured.
RequestStatus.InvalidArgument	The specified e-mail alias contains zero characters or a semicolon (;), or the <b>RequestorEmail</b> element of the <b>Info</b> element is NULL.
RequestStatus.DuplicateAlias	The specified e-mail alias already exists in the collection of creation requests that are pending approval, or automatic approvals are enabled and the specified e-mail alias already exists in the DS.
RequestStatus.AccessDenied	Automatic approvals are enabled and the protocol client does not have sufficient permission to access one or more of the objects that are needed for the operation.
RequestStatus.ServerUnavailable	Automatic approvals are enabled and a protocol server that is needed for the operation cannot be accessed.
RequestStatus.InternalError	The operation failed because an unexpected internal error occurred.
RequestStatus.ObjectNotFound	Automatic approvals are enabled and the e-mail alias specified by the <b>ContactCN</b> element cannot be found in the DS.
RequestStatus.PendingApproval	Automatic approvals are disabled and a job was created for the request.
RequestStatus.Success	Automatic approvals are enabled and the operation finished successfully.

### 3.1.4.4.3 Complex Types

None.

#### 3.1.4.4.4 Simple Types

None.

#### 3.1.4.4.5 Attributes

None.

#### 3.1.4.4.6 Groups

None.

#### 3.1.4.4.7 Attribute Groups

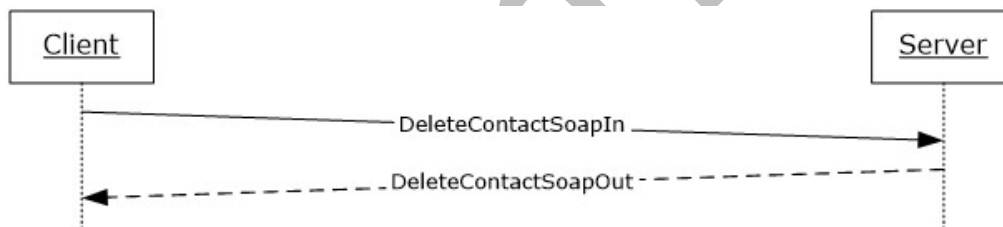
None.

#### 3.1.4.5 DeleteContact

The **DeleteContact** operation is used to delete a contact from a DS.

```
<wsdl:operation name="DeleteContact">
  <wsdl:input message="tns:DeleteContactSoapIn" />
  <wsdl:output message="tns:DeleteContactSoapOut" />
</wsdl:operation>
```

The protocol client sends a **DeleteContactSoapIn** request message and the protocol server responds with a **DeleteContactSoapOut** response message. The following diagram shows the message sequence.



**Figure 7: Message sequence for a DeleteContact operation**

#### 3.1.4.5.1 Messages

The following table summarizes the set of WSDL message definitions that are specific to this operation.

Message	Description
<b>DeleteContactSoapIn</b>	A request to initiate a <b>DeleteContact</b> operation.
<b>DeleteContactSoapOut</b>	A response from the protocol server at completion of the <b>DeleteContact</b> operation.

### 3.1.4.5.1.1 DeleteContactSoapIn

This is the request message for a **DeleteContact** operation.

The SOAP action value of the message is defined as follows.

```
http://microsoft.com/webservices/SharePoint/SharepointEmailWS/DeleteContact
```

The SOAP body contains a **DeleteContact** element.

### 3.1.4.5.1.2 DeleteContactSoapOut

This is the response message for a **DeleteContact** operation.

The SOAP action value of the message is defined as follows.

```
http://microsoft.com/webservices/SharePoint/SharepointEmailWS/DeleteContact
```

The SOAP body contains a **DeleteContactResponse** element.

### 3.1.4.5.2 Elements

The following table summarizes the XML schema element definitions that are specific to this operation.

Element	Description
<b>DeleteContact</b>	Body of the <b>DeleteContactSoapIn</b> message.
<b>DeleteContactResponse</b>	Body of the <b>DeleteContactSoapOut</b> message.

### 3.1.4.5.2.1 DeleteContact

The definition of the **DeleteContact** element is as follows.

```
<s:element name="DeleteContact">  
  <s:complexType>  
    <s:sequence>  
      <s:element name="Alias" type="s:string" />  
    </s:sequence>  
  </s:complexType>  
</s:element>
```

**Alias:** The e-mail alias of the contact to delete from the DS. Limitations on this value are specified in [\[MS-ADA1\]](#) section [2.110](#). Additionally, this value MUST consist of 255 or fewer characters.

### 3.1.4.5.2.2 DeleteContactResponse

The definition of the **DeleteContactResponse** element is as follows.

```
<s:element name="DeleteContactResponse">
  <s:complexType>
    <s:sequence>
      <s:element name="DeleteContactResult" type="tns:RequestStatus"/>
    </s:sequence>
  </s:complexType>
</s:element>
```

**DeleteContactResult:** The protocol server MUST return a **RequestStatus** simple type (section [2.2.5.3](#)) in the response message. The response MUST contain one of the values described in the following table.

Value	Description
RequestStatus.ServiceNotConfigured	The DS is not configured.
RequestStatus.InvalidArgument	The specified e-mail alias contains zero characters or a semicolon (;).
RequestStatus.ObjectNotFound	The contact cannot be found in the DS.
RequestStatus.AccessDenied	The protocol client does not have sufficient permission to access one or more of the objects that are needed for the operation.
RequestStatus.ServerUnavailable	A protocol server that is needed for the operation cannot be accessed.
RequestStatus.InternalError	The operation failed because an unexpected internal error occurred.
RequestStatus.Success	The operation finished successfully.

### 3.1.4.5.3 Complex Types

None.

### 3.1.4.5.4 Simple Types

None.

### 3.1.4.5.5 Attributes

None.

### 3.1.4.5.6 Groups

None.

### 3.1.4.5.7 Attribute Groups

None.

### 3.1.4.6 DeleteDistributionGroup

The **DeleteDistributionGroup** operation is used to delete an existing distribution list from a DS.

```
<wsdl:operation name="DeleteDistributionGroup">
  <wsdl:input message="tns:DeleteDistributionGroupSoapIn" />
  <wsdl:output message="tns:DeleteDistributionGroupSoapOut" />
</wsdl:operation>
```

The protocol client sends a **DeleteDistributionGroupSoapIn** request message, and the protocol server responds with a **DeleteDistributionGroupSoapOut** response message. The following diagram shows the message sequence.



**Figure 8: Message sequence for a DeleteDistributionGroup operation**

#### 3.1.4.6.1 Messages

The following table summarizes the set of WSDL message definitions that are specific to this operation.

Message	Description
<b>DeleteDistributionGroupSoapIn</b>	A request to initiate a <b>DeleteDistributionGroup</b> operation.
<b>DeleteDistributionGroupSoapOut</b>	A response from the protocol server at completion of the <b>DeleteDistributionGroup</b> operation.

##### 3.1.4.6.1.1 DeleteDistributionGroupSoapIn

This is the request message for a **DeleteDistributionGroup** operation.

The SOAP action value of the message is defined as follows.

<http://microsoft.com/webservices/SharePoint/SharepointEmailWS/DeleteDistributionGroup>

The SOAP body contains a **DeleteDistributionGroup** element.

### 3.1.4.6.1.2 DeleteDistributionGroupSoapOut

This is the response message for a **DeleteDistributionGroup** operation.

The SOAP action value of the message is defined as follows.

<http://microsoft.com/webservices/SharePoint/SharepointEmailWS/DeleteDistributionGroup>

The SOAP body contains a **DeleteDistributionGroupResponse** element.

### 3.1.4.6.2 Elements

The following table summarizes the XML schema element definitions that are specific to this operation.

Element	Description
<b>DeleteDistributionGroup</b>	Body of the <b>DeleteDistributionGroupSoapIn</b> message.
<b>DeleteDistributionGroupResponse</b>	Body of the <b>DeleteDistributionGroupSoapOut</b> message.

#### 3.1.4.6.2.1 DeleteDistributionGroup

The definition of the **DeleteDistributionGroup** element is as follows.

```
<s:element name="DeleteDistributionGroup">
  <s:complexType>
    <s:sequence>
      <s:element name="Alias" type="s:string" />
      <s:element name="Info" type="tns:RequestInfo" />
    </s:sequence>
  </s:complexType>
</s:element>
```

**Alias:** The e-mail alias of the distribution list to delete. This value **MUST** be 255 or fewer characters. Additional limitations enforced on this value by the DS are specified in [\[MS-ADA1\]](#) section [2.110](#), which further restricts the number of characters to the "rangeUpper" value.

**Info:** A **RequestInfo** complex type (section [2.2.4.2](#)) that contains additional information about the request to delete the distribution list.

#### 3.1.4.6.2.2 DeleteDistributionGroupResponse

The definition of the **DeleteDistributionGroupResponse** element is as follows.

```
<s:element name="DeleteDistributionGroupResponse">
  <s:complexType>
    <s:sequence>
      <s:element name="DeleteDistributionGroupResult" type="tns:RequestResponse" />
    </s:sequence>
  </s:complexType>
</s:element>
```

**DeleteDistributionGroupResult:** The protocol server MUST return a **RequestResponse** complex type (section [2.2.4.3](#)). The **JobStatus** element of the **RequestResponse** type MUST contain one of the values described in the following table.

Value	Description
RequestStatus.ServiceNotConfigured	The DS is not configured.
RequestStatus.InvalidArgument	The specified e-mail alias contains zero characters or a semicolon (;), or the <b>RequestorEmail</b> element of the <b>Info</b> element is NULL.
RequestStatus.ObjectNotFound	The specified e-mail alias cannot be found in either the DS or the collection of distribution lists that are pending creation.
RequestStatus.AccessDenied	Automatic approvals are enabled and the protocol client does not have sufficient permission to access one or more of the objects that are needed for the operation.
RequestStatus.ServerUnavailable	Automatic approvals are enabled and a protocol server that is needed for the operation cannot be accessed.
RequestStatus.InternalError	The operation failed because an unexpected internal error occurred.
RequestStatus.PendingApproval	Automatic approvals are disabled and a job was created for the deletion request.
RequestStatus.Success	The operation finished successfully; the distribution group was deleted or a pending request to create the distribution group was cancelled.

### 3.1.4.6.3 Complex Types

None.

### 3.1.4.6.4 Simple Types



None.

### 3.1.4.6.5 Attributes

None.

### 3.1.4.6.6 Groups

None.

### 3.1.4.6.7 Attribute Groups

None.

### 3.1.4.7 GetJobStatus

The **GetJobStatus** operation is used to request an update on the status of an existing request that was created by any of the following operations:

- **CreateDistributionGroup** (section [3.1.4.4](#))
- **DeleteDistributionGroup** (section [3.1.4.6.2.1](#))
- **ModifyDistributionGroup** (section [3.1.4.9](#))
- **RenameDistributionGroup** (section [3.1.4.10](#))

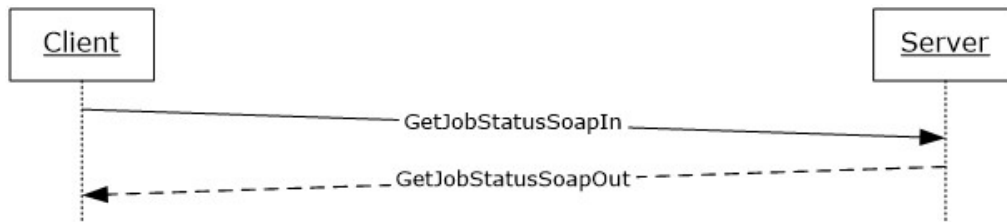
If the request was created by a **CreateDistributionGroup** operation, and the **RequestStatus** element (section [2.2.5.3](#)) returned by the **GetJobStatus** operation contains any value other than "PendingApproval" or "Success", both the job and the corresponding job identifier, as specified by the **JobID** element, are removed from the collection of jobs.

If the request was created by any operation other than a **CreateDistributionGroup** operation, and the **RequestStatus** element (section [2.2.5.3](#)) returned by the **GetJobStatus** operation contains any value other than "PendingApproval", both the job and the corresponding job identifier, as specified by the **JobID** element, are removed from the collection of jobs.

In all other cases, neither the job nor the corresponding job identifier is removed from the collection of jobs.

```
<wsdl:operation name="GetJobStatus">  
<wsdl:input message="tns:GetJobStatusSoapIn" />  
<wsdl:output message="tns:GetJobStatusSoapOut" />  
</wsdl:operation>
```

The protocol client sends a **GetJobStatusSoapIn** request message, and the protocol server responds with a **GetJobStatusSoapOut** response message. The following diagram shows the message sequence.



**Figure 9: Message sequence for a GetJobStatus operation**

### 3.1.4.7.1 Messages

The following table summarizes the set of WSDL message definitions that are specific to this operation.

Message	Description
<b>GetJobStatusSoapIn</b>	A request to initiate a <b>GetJobStatus</b> operation.
<b>GetJobStatusSoapOut</b>	A response from the protocol server at completion of the <b>GetJobStatus</b> operation.

#### 3.1.4.7.1.1 GetJobStatusSoapIn

This is the request message for a **GetJobStatus** operation.

The SOAP action value of the message is defined as follows.

`http://microsoft.com/webservices/SharePoint/SharepointEmailWS/GetJobStatus`

The SOAP body contains a **GetJobStatus** element.

#### 3.1.4.7.1.2 GetJobStatusSoapOut

This is the response message for a **GetJobStatus** operation.

The SOAP action value of the message is defined as follows.

`http://microsoft.com/webservices/SharePoint/SharepointEmailWS/GetJobStatus`

The SOAP body contains a **GetJobStatusResponse** element.

### 3.1.4.7.2 Elements

The following table summarizes the XML schema element definitions that are specific to this operation.

Element	Description
<b>GetJobStatus</b>	Body of the <b>GetJobStatusSoapIn</b> message.
<b>GetJobStatusResponse</b>	Body of the <b>GetJobStatusSoapOut</b> message.

### 3.1.4.7.2.1 GetJobStatus

The definition of the **GetJobStatus** element is as follows.

```
<s:element name="GetJobStatus">
  <s:complexType>
    <s:sequence>
      <s:element name="JobId" type="s:int" />
    </s:sequence>
  </s:complexType>
</s:element>
```

**JobId:** The identifier that is returned in a **RequestResponse** type (section [2.2.4.3](#)) by the original operation, which is either a **CreateDistributionGroup** (section [3.1.4.4](#)), **DeleteDistributionGroup** (section [3.1.4.6.2.1](#)), **ModifyDistributionGroup** (section [3.1.4.9](#)), or **RenameDistributionGroup** (section [3.1.4.10](#)) operation. This identifier MUST be in the collection of jobs. If the identifier does not exist in the collection of jobs, the protocol server MUST return a SOAP fault exception.

### 3.1.4.7.2.2 GetJobStatusResponse

The definition of the **GetJobStatusResponse** element is as follows.

```
<s:element name="GetJobStatusResponse">
  <s:complexType>
    <s:sequence>
      <s:element name="GetJobStatusResult" type="tns:RequestResponse" />
    </s:sequence>
  </s:complexType>
</s:element>
```

**GetJobStatusResult:** The protocol server MUST return a **RequestResponse** complex type (section [2.2.4.3](#)) in the response message. The **JobStatus** element of the **RequestResponse** type MUST contain one of the values described in the following table.

Value	Description
RequestStatus.AccessDenied	The protocol client does not have sufficient permission to access one or more of the objects that are needed for the operation.
RequestStatus.InvalidArgument	The value of the <b>JobId</b> element is less than or equal to zero.
RequestStatus.ApprovalDenied	Approval was denied for the job specified by the <b>JobId</b> element.
RequestStatus.PendingApproval	Approval has been neither granted nor denied yet for the job specified by the <b>JobId</b> element.

Value	Description
RequestStatus.InternalError	The operation failed because an unexpected internal error occurred.
RequestStatus.Success	Approval was granted for the job specified by the <b>JobId</b> element.

### 3.1.4.7.3 Complex Types

None.

### 3.1.4.7.4 Simple Types

None.

### 3.1.4.7.5 Attributes

None.

### 3.1.4.7.6 Groups

None.

### 3.1.4.7.7 Attribute Groups

None.

### 3.1.4.8 ModifyContact

The **ModifyContact** operation is used to modify the properties of an existing contact in a DS.

```
<wsdl:operation name="ModifyContact">
  <wsdl:input message="tns:ModifyContactSoapIn" />
  <wsdl:output message="tns:ModifyContactSoapOut" />
</wsdl:operation>
```

The protocol client sends a **ModifyContactSoapIn** request message, and the protocol server responds with a **ModifyContactSoapOut** response message. The following diagram shows the message sequence.



**Figure 10: Message sequence for a ModifyContact operation**

### 3.1.4.8.1 Messages

The following table summarizes the set of WSDL message definitions that are specific to this operation.

Message	Description
<b>ModifyContactSoapIn</b>	A request to initiate a <b>ModifyContact</b> operation.
<b>ModifyContactSoapOut</b>	A response from the protocol server at completion of the <b>ModifyContact</b> operation.

#### 3.1.4.8.1.1 ModifyContactSoapIn

This is the request message for a **ModifyContact** operation.

The SOAP action value of the message is defined as follows.

```
http://microsoft.com/webservices/SharePoint/SharepointEmailWS/ModifyContact
```

The SOAP body contains a **ModifyContact** element.

#### 3.1.4.8.1.2 ModifyContactSoapOut

This is the response message for a **ModifyContact** operation.

The SOAP action value of the message is defined as follows.

```
http://microsoft.com/webservices/SharePoint/SharepointEmailWS/ModifyContact
```

The SOAP body contains a **ModifyContactResponse** element.

### 3.1.4.8.2 Elements

The following table summarizes the XML schema element definitions that are specific to this operation.

Element	Description
<b>ModifyContactStatus</b>	Body of the <b>ModifyContactSoapIn</b> message.
<b>ModifyContactResponse</b>	Body of the <b>ModifyContactSoapOut</b> message.

### 3.1.4.8.2.1 ModifyContact

The definition of the **ModifyContact** element is as follows.

```
<s:element name="ModifyContact">
  <s:complexType>
    <s:sequence>
      <s:element name="OldAlias" type="s:string" />
      <s:element name="NewAlias" type="s:string" minOccurs="0"/>
      <s:element name="FirstName" type="s:string" />
      <s:element name="LastName" type="s:string" />
      <s:element name="ForwardingEmail" type="s:string" minOccurs="0"/>
      <s:element name="Flags" type="tns:ContactFlags" />
    </s:sequence>
  </s:complexType>
</s:element>
```

**OldAlias:** The current e-mail alias of the contact. Limitations on this value are specified in [\[MS-ADA1\]](#) section [2.110](#). Additionally, this value MUST consist of 255 or fewer characters.

**NewAlias:** The new e-mail alias of the contact. If a value is not specified, the e-mail alias of the contact is not changed. Limitations on this value are specified in [\[MS-ADA1\]](#) section [2.110](#). Additionally, this value MUST consist of 255 or fewer characters.

**FirstName:** The first name of the contact (3). Limitations on this value are specified in [\[MS-ADA1\]](#) section [2.273](#).

**LastName:** The last name of the contact (3). Limitations on this value are specified in [\[MS-ADA3\]](#) section [2.275](#).

**ForwardingEmail:** The e-mail address where e-mail messages are forwarded for the contact (3).

**Flags:** A **ContactFlags** simple type (section [2.2.5.1](#)) that contains any additional properties or constraints on the contact (3).

### 3.1.4.8.2.2 ModifyContactResponse

The definition of the **ModifyContactResponse** element is as follows.

```
<s:element name="ModifyContactResponse">
  <s:complexType>
    <s:sequence>
      <s:element name="ModifyContactResult" type="tns:RequestStatus"/>
    </s:sequence>
  </s:complexType>
</s:element>
```

**ModifyContactResult:** The protocol server MUST return a **RequestStatus** simple type (section [2.2.5.3](#)) in the response message. The response MUST contain one of the values described in the following table.

Value	Description
RequestStatus.ServiceNotConfigured	The DS is not configured.

Value	Description
RequestStatus.InvalidArgument	The value of the <b>OldAlias</b> element contains zero characters, or the value of the <b>OldAlias</b> or <b>NewAlias</b> element contains a semicolon (;).
RequestStatus.DuplicateAlias	A value was specified by the <b>NewAlias</b> element and that value is not equal to the value of the <b>OldAlias</b> element, ignoring case. However, the value specified by the <b>NewAlias</b> element already exists in the DS.
RequestStatus.AccessDenied	The protocol client does not have sufficient permission to access one or more of the objects that are needed for the operation.
RequestStatus.ServerUnavailable	A protocol server that is needed for the operation cannot be accessed.
RequestStatus.ObjectNotFound	The value specified by the <b>OldAlias</b> element does not exist in the DS.
RequestStatus.InternalError	The operation failed because an unexpected internal error occurred.
RequestStatus.Success	The operation finished successfully.

### 3.1.4.8.3 Complex Types

None.

### 3.1.4.8.4 Simple Types

None.

### 3.1.4.8.5 Attributes

None.

### 3.1.4.8.6 Groups

None.

### 3.1.4.8.7 Attribute Groups

None.

### 3.1.4.9 ModifyDistributionGroup

The **ModifyDistributionGroup** operation is used to change properties of an existing distribution list in a DS.

```
<wsdl:operation name="ModifyDistributionGroup">
  <wsdl:input message="tns:ModifyDistributionGroupSoapIn" />
  <wsdl:output message="tns:ModifyDistributionGroupSoapOut" />
</wsdl:operation>
```

The protocol client sends a **ModifyDistributionGroupSoapIn** request message, and the protocol server responds with a **ModifyDistributionGroupSoapOut** response message. The following diagram shows the message sequence.



**Figure 11: Message sequence for a ModifyDistributionGroup operation**

#### 3.1.4.9.1 Messages

The following table summarizes the set of WSDL message definitions that are specific to this operation.

Message	Description
<b>ModifyDistributionGroupSoapIn</b>	A request to initiate a <b>ModifyDistributionGroup</b> operation.
<b>ModifyDistributionGroupSoapOut</b>	A response from the protocol server at completion of the <b>ModifyDistributionGroup</b> operation.

##### 3.1.4.9.1.1 ModifyDistributionGroupSoapIn

This is the request message for a **ModifyDistributionGroup** operation.

The SOAP action value of the message is defined as follows.

```
http://microsoft.com/webservices/SharePoint/SharepointEmailWS/ModifyDistributionGroup
```

The SOAP body contains a **ModifyDistributionGroup** element.

##### 3.1.4.9.1.2 ModifyDistributionGroupSoapOut

This is the response message for a **ModifyDistributionGroup** operation.



The SOAP action value of the message is defined as follows.

```
http://microsoft.com/webservices/SharePoint/SharepointEmailWS/ModifyDistributionGroup
```

The SOAP body contains a **ModifyDistributionGroupResponse** element.

### 3.1.4.9.2 Elements

The following table summarizes the XML schema element definitions that are specific to this operation.

Element	Description
<b>ModifyDistributionGroup</b>	Body of the <b>ModifyDistributionGroupSoapIn</b> message.
<b>ModifyDistributionGroupResponse</b>	Body of the <b>ModifyDistributionGroupSoapOut</b> message.

#### 3.1.4.9.2.1 ModifyDistributionGroup

The definition of the **ModifyDistributionGroup** element is as follows.

```
<s:element name="ModifyDistributionGroup">
  <s:complexType>
    <s:sequence>
      <s:element name="Alias" type="s:string" />
      <s:element name="Name" type="s:string" />
      <s:element name="Description" type="s:string" minOccurs="0" />
      <s:element name="ContactCN" type="s:string" minOccurs="0" />
      <s:element name="Info" type="tns:RequestInfo" />
      <s:element name="Flags" type="tns:DistributionGroupFlags" />
    </s:sequence>
  </s:complexType>
</s:element>
```

**Alias:** The e-mail alias of the distribution list. This value MUST be 255 or fewer characters. Additional limitations enforced on this value by the DS are specified in [\[MS-ADA1\]](#) section [2.110](#), which further restricts the number of characters to the "rangeUpper" value.

**Name:** The new display name of the distribution list. This value MUST be 255 or fewer characters. Additional limitations on this value are specified in [\[MS-ADA1\]](#) section [2.175](#).

**Description:** The new description of the distribution list. This value MUST be 4,000 or fewer characters.

**ContactCN:** The e-mail alias of a contact to add to the distribution list. This value MUST be 255 or fewer characters. Additional limitations on this value are specified in [\[MS-ADA1\]](#) section [2.110](#).

**Info:** A **RequestInfo** complex type (section [2.2.4.2](#)) that contains additional information about the request.

**Flags:** A **DistributionGroupFlags** simple type (section [2.2.5.2](#)) that contains updated validation properties or constraints on the distribution list.

### 3.1.4.9.2.2 ModifyDistributionGroupResponse

The definition of the **ModifyDistributionGroupResponse** element is as follows.

```
<s:element name="ModifyDistributionGroupResponse">
  <s:complexType>
    <s:sequence>
      <s:element name="ModifyDistributionGroupResult" type="tns:RequestResponse" />
    </s:sequence>
  </s:complexType>
</s:element>
```

**ModifyDistributionGroupResult:** The protocol server MUST return a **RequestResponse** complex type (section [2.2.4.3](#)) in the response message. The value of the **JobStatus** element of the **RequestResponse** type MUST be one of the values described in the following table.

Value	Description
RequestStatus.ServiceNotConfigured	The DS is not configured.
RequestStatus.InvalidArgument	The value specified by the <b>Alias</b> element is not valid or the <b>RequestorEmail</b> element of the <b>Info</b> element is NULL.
RequestStatus.ObjectNotFound	The value specified by the <b>Alias</b> element cannot be found in the DS or automatic approvals are enabled and the value specified by the <b>ContactCN</b> element cannot be found in the DS.
RequestStatus.AccessDenied	Automatic approvals are enabled but the protocol client does not have sufficient permission to access one or more of the objects that are needed for the operation.
RequestStatus.ServerUnavailable	Automatic approvals are enabled and a protocol server that is required for the operation cannot be accessed.
RequestStatus.InternalError	The operation failed because an unexpected internal error occurred.
RequestStatus.PendingApproval	Automatic approvals are disabled and a job was created for the request.
RequestStatus.Success	Automatic approvals are enabled and the operation finished successfully.

### 3.1.4.9.3 Complex Types

None.

### 3.1.4.9.4 Simple Types

None.

### 3.1.4.9.5 Attributes

None.

### 3.1.4.9.6 Groups

None.

### 3.1.4.9.7 Attribute Groups

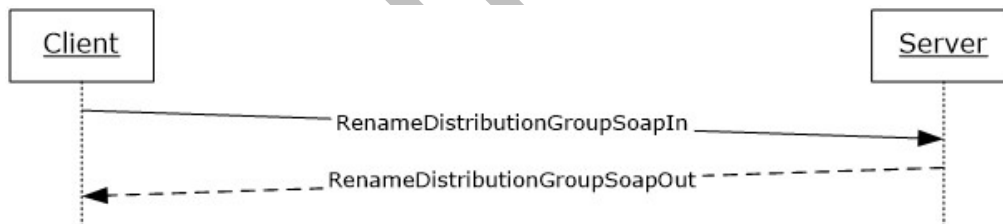
None.

### 3.1.4.10 RenameDistributionGroup

The **RenameDistributionGroup** operation is used to change the name of an existing distribution list in a DS.

```
<wsdl:operation name="RenameDistributionGroup">
  <wsdl:input message="tns:RenameDistributionGroupSoapIn" />
  <wsdl:output message="tns:RenameDistributionGroupSoapOut" />
</wsdl:operation>
```

The protocol client sends a **RenameDistributionGroupSoapIn** request message, and the protocol server responds with a **RenameDistributionGroupSoapOut** response message. The following diagram shows the message sequence.



**Figure 12: Message sequence for a RenameDistributionGroup operation**

#### 3.1.4.10.1 Messages

The following table summarizes the set of WSDL message definitions that are specific to this operation.

Message	Description
<b>RenameDistributionGroupSoapIn</b>	A request to initiate a <b>RenameDistributionGroup</b> operation.

<b>RenameDistributionGroupSoapOut</b>	A response from the protocol server at completion of the <b>RenameDistributionGroup</b> operation.
---------------------------------------	--

### 3.1.4.10.1.1 RenameDistributionGroupSoapIn

This is the request message for a **RenameDistributionGroup** operation.

The SOAP action value of the message is defined as follows.

```
http://microsoft.com/webservices/SharePoint/SharepointEmailWS/RenameDistributionGroup
```

The SOAP body contains a **RenameDistributionGroup** element.

### 3.1.4.10.1.2 RenameDistributionGroupSoapOut

This is the response message for a **RenameDistributionGroup** operation.

The SOAP action value of the message is defined as follows.

```
http://microsoft.com/webservices/SharePoint/SharepointEmailWS/RenameDistributionGroup
```

The SOAP body contains a **RenameDistributionGroupResponse** element.

### 3.1.4.10.2 Elements

The following table summarizes the XML schema element definitions that are specific to this operation.

Element	Description
<b>RenameDistributionGroup</b>	Body of the <b>RenameDistributionGroupSoapIn</b> message.
<b>RenameDistributionGroupResponse</b>	Body of the <b>RenameDistributionGroupSoapOut</b> message.

### 3.1.4.10.2.1 RenameDistributionGroup

The definition of the **RenameDistributionGroup** is as follows.

```
<s:element name="RenameDistributionGroup">
  <s:complexType>
    <s:sequence>
      <s:element name="OldAlias" type="s:string" />
      <s:element name="NewAlias" type="s:string" />
    </s:sequence>
  </s:complexType>
</s:element>
```

```

<s:element name="Info" type="tns:RequestInfo" />
</s:sequence>
</s:complexType>
</s:element>

```

**OldAlias:** The e-mail alias of the distribution list. This value MUST be 255 or fewer characters. Additional limitations enforced on this value by the DS are specified in [\[MS-ADA1\]](#) section [2.110](#), which further restricts the number of characters to the "rangeUpper" value.

**NewAlias:** The new e-mail alias for the distribution list. This value MUST be 255 or fewer characters. Additional limitations enforced on this value by the DS are specified in [\[MS-ADA1\]](#) section [2.110](#), which further restricts the number of characters to the "rangeUpper" value.

**Info:** A **RequestInfo** complex type (section [2.2.4.2](#)) that contains additional information about the request.

### 3.1.4.10.2.2 RenameDistributionGroupResponse

The definition of the **RenameDistributionGroupResponse** element is as follows.

```

<s:element name="RenameDistributionGroupResponse">
  <s:complexType>
    <s:sequence>
      <s:element name="RenameDistributionGroupResult" type="tns:RequestResponse" />
    </s:sequence>
  </s:complexType>
</s:element>

```

**RenameDistributionGroupResult:** The protocol server MUST return a **RequestResponse** complex type (section [2.2.4.3](#)) in the response message. The value of the **JobStatus** element of the **RequestResponse** type MUST be one of the values described in the following table.

Value	Description
RequestStatus.ServiceNotConfigured	The DS is not configured.
RequestStatus.InvalidArgument	The value specified by the <b>OldAlias</b> element or the <b>NewAlias</b> element contains zero characters or a semicolon (;), or the <b>RequestorEmail</b> element of the <b>Info</b> element is NULL.
RequestStatus.ObjectNotFound	The value specified by the <b>OldAlias</b> element cannot be found in the DS.
RequestStatus.DuplicateAlias	The value specified by the <b>NewAlias</b> element already exists in the DS.
RequestStatus.AccessDenied	Automatic approvals are enabled and the protocol client does not have sufficient permission to access one or more of the objects that are needed for the operation.

Value	Description
RequestStatus.ServerUnavailable	Automatic approvals are enabled and a protocol server that is required for the operation cannot be accessed.
RequestStatus.InternalError	The operation failed because an unexpected internal error occurred.
RequestStatus.PendingApproval	Automatic approvals are disabled and a job was created for the request.
RequestStatus.Success	Automatic approvals are enabled and the operation finished successfully.

### 3.1.4.10.3 Complex Types

None.

### 3.1.4.10.4 Simple Types

None.

### 3.1.4.10.5 Attributes

None.

### 3.1.4.10.6 Groups

None.

### 3.1.4.10.7 Attribute Groups

None.

### 3.1.5 Timer Events

None.

### 3.1.6 Other Local Events

None.

## 4 Protocol Examples

### 4.1 Create and Add a User to a Distribution List

This scenario demonstrates how to create a new distribution list, add a user to a distribution list, and verify that the requests were approved.

#### 4.1.1 Create a Distribution List

In this example, a new distribution list named "DistGroup01" is created on the protocol server, in response to a request from a protocol client. The e-mail alias of the distribution list is "DistGroup01".

The protocol client sends the following request message:

```
<soap:Envelope xmlns:soap="http://schemas.xmlsoap.org/soap/envelope/"
xmlns:xsi="http://www.w3.org/2001/XMLSchema-instance"
xmlns:xsd="http://www.w3.org/2001/XMLSchema">
  <soap:Body>
    <CreateDistributionGroup
xmlns="http://microsoft.com/webservices/SharePoint/SharepointEmailWS/">
      <Alias>DistGroup01</Alias>
      <Name>DistGroup01</Name>
      <ContactCN />
      <Info>
        <RequestorEmail>adam.carter@example.com</RequestorEmail>
        <RequestId>00000000-0000-0000-0000-000000000000</RequestId>
      </Info>
      <Flags>None</Flags>
    </CreateDistributionGroup>
  </soap:Body>
</soap:Envelope>
```

The protocol server is configured to approve requests automatically. Therefore, it creates the distribution list and returns the status value "Success" in the following response message:

```
<soap:Envelope xmlns:soap="http://schemas.xmlsoap.org/soap/envelope/"
xmlns:xsi="http://www.w3.org/2001/XMLSchema-instance"
xmlns:xsd="http://www.w3.org/2001/XMLSchema">
  <soap:Body>
    <CreateDistributionGroupResponse
xmlns="http://microsoft.com/webservices/SharePoint/SharepointEmailWS/">
      <CreateDistributionGroupResult>
        <JobID>0</JobID>
        <JobStatus>Success</JobStatus>
        <Alias>DistGroup01</Alias>
      </CreateDistributionGroupResult>
    </CreateDistributionGroupResponse>
  </soap:Body>
</soap:Envelope>
```

#### 4.1.2 Add a User to a Distribution List

In this example, the user uniquely identified by the domain account "Example\smasters" is added to a distribution list named "addmembersdl".

The protocol client sends the following request message:

```

<soap:Envelope xmlns:soap="http://schemas.xmlsoap.org/soap/envelope/"
xmlns:xsi="http://www.w3.org/2001/XMLSchema-instance"
xmlns:xsd="http://www.w3.org/2001/XMLSchema">
  <soap:Body>
    <ChangeUsersMembershipInDistributionGroup
xmlns="http://microsoft.com/webservices/SharePoint/SharepointEmailWS/">
      <Alias>addmembersdl</Alias>
      <AddNt4NameList>
        <string>Example\smasters</string>
      </AddNt4NameList>
      <DeleteNt4NameList />
      <DeleteAllCurrentMembers>false</DeleteAllCurrentMembers>
    </ChangeUsersMembershipInDistributionGroup>
  </soap:Body>
</soap:Envelope>

```

The protocol server adds the domain account "Example\smasters" to the distribution list named "addmembersdl" and returns the status value "Success" in the following response message:

```

<soap:Envelope xmlns:soap="http://schemas.xmlsoap.org/soap/envelope/"
xmlns:xsi="http://www.w3.org/2001/XMLSchema-instance"
xmlns:xsd="http://www.w3.org/2001/XMLSchema">
  <soap:Body>
    <ChangeUsersMembershipInDistributionGroupResponse
xmlns="http://microsoft.com/webservices/SharePoint/SharepointEmailWS/">
      <ChangeUsersMembershipInDistributionGroupResult>Success</ChangeUsersMembershipInDistributionGroupResult>
    </ChangeUsersMembershipInDistributionGroupResponse>
  </soap:Body>
</soap:Envelope>

```

## 4.2 Create and Add a Contact to a Distribution List

This scenario demonstrates how to create a new contact and how to add a contact to an existing distribution list.

### 4.2.1 Create a Contact

In this example, a contact named "Steve Masters" is added to the DS. The contact's e-mail alias is "Steve.Masters". The contact's forwarding e-mail address is "Steve.Masters@example.com".

The protocol client sends the following request message:

```

<soap:Envelope xmlns:soap="http://schemas.xmlsoap.org/soap/envelope/"
xmlns:xsi="http://www.w3.org/2001/XMLSchema-instance"
xmlns:xsd="http://www.w3.org/2001/XMLSchema">
  <soap:Body>
    <CreateContact
xmlns="http://microsoft.com/webservices/SharePoint/SharepointEmailWS/">
      <Alias>Steve.Masters</Alias>
      <FirstName>Steve</FirstName>
      <LastName>Masters</LastName>
      <ForwardingEmail>steve.masters@example.com</ForwardingEmail>
      <Flags>None</Flags>
    </CreateContact>
  </soap:Body>
</soap:Envelope>

```



The protocol server adds the contact "Steve Masters" to the DS and returns the status value "Success" in the following response message:

```
<soap:Envelope xmlns:soap="http://schemas.xmlsoap.org/soap/envelope/"
xmlns:xsi="http://www.w3.org/2001/XMLSchema-instance"
xmlns:xsd="http://www.w3.org/2001/XMLSchema">
  <soap:Body>
    <CreateContactResponse
xmlns="http://microsoft.com/webservices/SharePoint/SharepointEmailWS/">
      <CreateContactResult>Success</CreateContactResult>
    </CreateContactResponse>
  </soap:Body>
</soap:Envelope>
```

## 4.2.2 Add a Contact to a Distribution List

In this example, a contact with the e-mail alias "Lori.Kane" is added to the distribution list named "AddMembersDL".

The protocol client sends the following request message:

```
<soap:Envelope xmlns:soap="http://schemas.xmlsoap.org/soap/envelope/"
xmlns:xsi="http://www.w3.org/2001/XMLSchema-instance"
xmlns:xsd="http://www.w3.org/2001/XMLSchema">
  <soap:Body>
    <ChangeContactsMembershipInDistributionGroup
xmlns="http://microsoft.com/webservices/SharePoint/SharepointEmailWS/">
      <Alias>AddMembersDL</Alias>
      <AddListForContacts>
        <string>Lori.Kane</string>
      </AddListForContacts>
      <DeleteListForContacts>
        <string />
      </DeleteListForContacts>
      <DeleteAllCurrentMembers>false</DeleteAllCurrentMembers>
    </ChangeContactsMembershipInDistributionGroup>
  </soap:Body>
</soap:Envelope>
```

The protocol server adds the contact to the distribution list and returns the status value "Success" in the following response message:

```
<soap:Envelope xmlns:soap="http://schemas.xmlsoap.org/soap/envelope/"
xmlns:xsi="http://www.w3.org/2001/XMLSchema-instance"
xmlns:xsd="http://www.w3.org/2001/XMLSchema">
  <soap:Body>
    <ChangeContactsMembershipInDistributionGroupResponse
xmlns="http://microsoft.com/webservices/SharePoint/SharepointEmailWS/">
      <ChangeContactsMembershipInDistributionGroupResult>Success</ChangeContactsMembershipInDistributionGroupResult>
    </ChangeContactsMembershipInDistributionGroupResponse>
  </soap:Body>
</soap:Envelope>
```

## 4.3 Modify a Contact

This scenario demonstrates how to modify an existing contact in a DS. The contact's (3) e-mail alias is changed from "steve.masters" to "steved.masters". The contact's (3) name is changed from "Steve

Masters" to "Steve D Masters". The contact's (3) forwarding e-mail address is changed from "steve.masters@example.com" to "steved.masters@example.com".

The protocol client sends the following request message:

```
<soap:Envelope xmlns:soap="http://schemas.xmlsoap.org/soap/envelope/"
xmlns:xsi="http://www.w3.org/2001/XMLSchema-instance"
xmlns:xsd="http://www.w3.org/2001/XMLSchema">
  <soap:Body>
    <ModifyContact
xmlns="http://microsoft.com/webservices/SharePoint/SharepointEmailWS/">
      <OldAlias>steve.masters</OldAlias>
      <NewAlias>steved.masters</NewAlias>
      <FirstName>Steve D</FirstName>
      <LastName>Masters</LastName>
      <ForwardingEmail>steved.masters@example.com</ForwardingEmail>
      <Flags>None</Flags>
    </ModifyContact>
  </soap:Body>
</soap:Envelope>
```

The protocol server retrieves the existing contact, updates the requested properties of that contact (3), and returns the status value "Success" in the following response message:

```
<soap:Envelope xmlns:soap="http://schemas.xmlsoap.org/soap/envelope/"
xmlns:xsi="http://www.w3.org/2001/XMLSchema-instance"
xmlns:xsd="http://www.w3.org/2001/XMLSchema">
  <soap:Body>
    <ModifyContactResponse
xmlns="http://microsoft.com/webservices/SharePoint/SharepointEmailWS/">
      <ModifyContactResult>Success</ModifyContactResult>
    </ModifyContactResponse>
  </soap:Body>
</soap:Envelope>
```

## 4.4 Remove a Contact and Rename a Distribution List

This scenario demonstrates how to remove a contact from a distribution list, delete a contact (3), and rename a distribution list.

### 4.4.1 Remove a Contact from a Distribution List

In this example, a contact with the e-mail alias "steved.masters" is removed from the distribution list named "AddMembersDL".

The protocol client sends the following request message:

```
<soap:Envelope xmlns:soap="http://schemas.xmlsoap.org/soap/envelope/"
xmlns:xsi="http://www.w3.org/2001/XMLSchema-instance"
xmlns:xsd="http://www.w3.org/2001/XMLSchema">
  <soap:Body>
    <ChangeContactsMembershipInDistributionGroup
xmlns="http://microsoft.com/webservices/SharePoint/SharepointEmailWS/">
      <Alias>AddMembersDL</Alias>
      <AddListForContacts>
        <string />
      </AddListForContacts>
      <DeleteListForContacts>
        <string>steved.masters</string>
      </DeleteListForContacts>
    </ChangeContactsMembershipInDistributionGroup>
  </soap:Body>
</soap:Envelope>
```

```

        <DeleteAllCurrentMembers>false</DeleteAllCurrentMembers>
    </ChangeContactsMembershipInDistributionGroup>
</soap:Body>
</soap:Envelope>

```

The protocol server removes the contact from the distribution list and returns the status value "Success" in the following response message:

```

<soap:Envelope xmlns:soap="http://schemas.xmlsoap.org/soap/envelope/"
xmlns:xsi="http://www.w3.org/2001/XMLSchema-instance"
xmlns:xsd="http://www.w3.org/2001/XMLSchema">
  <soap:Body>
    <ChangeContactsMembershipInDistributionGroupResponse
xmlns="http://microsoft.com/webservices/SharePoint/SharepointEmailWS/">
      <ChangeContactsMembershipInDistributionGroupResult>Success</ChangeContactsMembershipInDistributionGroupResult>
    </ChangeContactsMembershipInDistributionGroupResponse>
  </soap:Body>
</soap:Envelope>

```

#### 4.4.2 Delete a Contact

In this example, the contact with the e-mail alias "steved.masters" is deleted from the DS.

The protocol client sends the following request message:

```

<soap:Envelope xmlns:soap="http://schemas.xmlsoap.org/soap/envelope/"
xmlns:xsi="http://www.w3.org/2001/XMLSchema-instance"
xmlns:xsd="http://www.w3.org/2001/XMLSchema">
  <soap:Body>
    <DeleteContact
xmlns="http://microsoft.com/webservices/SharePoint/SharepointEmailWS/">
      <Alias>steved.masters</Alias>
    </DeleteContact>
  </soap:Body>
</soap:Envelope>

```

The protocol server deletes the contact (3) with the specified e-mail alias, and returns the status value "Success" in the following response message:

```

<soap:Envelope xmlns:soap="http://schemas.xmlsoap.org/soap/envelope/"
xmlns:xsi="http://www.w3.org/2001/XMLSchema-instance"
xmlns:xsd="http://www.w3.org/2001/XMLSchema">
  <soap:Body>
    <DeleteContactResponse
xmlns="http://microsoft.com/webservices/SharePoint/SharepointEmailWS/">
      <DeleteContactResult>Success</DeleteContactResult>
    </DeleteContactResponse>
  </soap:Body>
</soap:Envelope>

```

#### 4.4.3 Change the Name of a Distribution List

In this example, a protocol client with the e-mail address "adam.carter@example.com" submits a request to change the e-mail alias of an existing distribution list from "DistGroup01" to "RenamedDG01".

The protocol client sends the following request message:

```
<soap:Envelope xmlns:soap="http://schemas.xmlsoap.org/soap/envelope/"
xmlns:xsi="http://www.w3.org/2001/XMLSchema-instance"
xmlns:xsd="http://www.w3.org/2001/XMLSchema">
  <soap:Body>
    <RenameDistributionGroup
xmlns="http://microsoft.com/webservices/SharePoint/SharepointEmailWS/">
      <OldAlias>DistGroup01</OldAlias>
      <NewAlias>RenamedDG01</NewAlias>
      <Info>
        <RequestorEmail>adam.carter@example.com</RequestorEmail>
        <RequestId>00000000-0000-0000-0000-000000000000</RequestId>
      </Info>
    </RenameDistributionGroup>
  </soap:Body>
</soap:Envelope>
```

The protocol server is not configured to approve requests automatically. Therefore, it creates a job for the request, stores the job as a **RequestStatus** simple type (section [2.2.5.3](#)) with the value "PendingApproval", and returns information about this job in the following response message:

```
<soap:Envelope xmlns:soap="http://schemas.xmlsoap.org/soap/envelope/"
xmlns:xsi="http://www.w3.org/2001/XMLSchema-instance"
xmlns:xsd="http://www.w3.org/2001/XMLSchema">
  <soap:Body>
    <RenameDistributionGroupResponse
xmlns="http://microsoft.com/webservices/SharePoint/SharepointEmailWS/">
      <RenameDistributionGroupResult>
        <JobID>76</JobID>
        <JobStatus>PendingApproval</JobStatus>
        <Alias>DistGroup01</Alias>
      </RenameDistributionGroupResult>
    </RenameDistributionGroupResponse>
  </soap:Body>
</soap:Envelope>
```

## 4.5 Modify a Distribution List

In this example, a protocol client with the e-mail address "adam.carter@example.com" submits a request to change the display name of an existing distribution list from "RenamedDG01" to "NewNameDG01".

The protocol client sends the following request message:

```
<soap:Envelope xmlns:soap="http://schemas.xmlsoap.org/soap/envelope/"
xmlns:xsi="http://www.w3.org/2001/XMLSchema-instance"
xmlns:xsd="http://www.w3.org/2001/XMLSchema">
  <soap:Body>
    <ModifyDistributionGroup
xmlns="http://microsoft.com/webservices/SharePoint/SharepointEmailWS/">
      <Alias>RenamedDG01</Alias>
      <Name>NewNameDG01</Name>
      <Description>any description</Description>
      <Info>
        <RequestorEmail>adam.carter@example.com</RequestorEmail>
        <RequestId>00000000-0000-0000-0000-000000000000</RequestId>
      </Info>
      <Flags>None</Flags>
    </ModifyDistributionGroup>
  </soap:Body>
```

```
</soap:Envelope>
```

The protocol server is not configured to approve requests automatically. Therefore, it creates a job for the modify request, stores that job as a **RequestStatus** simple type (section [2.2.5.3](#)) with the value "PendingApproval", and returns information about the job in the following response message:

```
<soap:Envelope xmlns:soap="http://schemas.xmlsoap.org/soap/envelope/"
xmlns:xsi="http://www.w3.org/2001/XMLSchema-instance"
xmlns:xsd="http://www.w3.org/2001/XMLSchema">
  <soap:Body>
    <ModifyDistributionGroupResponse
xmlns="http://microsoft.com/webservices/SharePoint/SharepointEmailWS/">
      <ModifyDistributionGroupResult>
        <JobID>78</JobID>
        <JobStatus>PendingApproval</JobStatus>
        <Alias>RenamedDG01</Alias>
      </ModifyDistributionGroupResult>
    </ModifyDistributionGroupResponse>
  </soap:Body>
</soap:Envelope>
```

#### 4.6 Delete a Distribution List

In this example, a protocol client with the e-mail address "adam.carter@example.com" submits a request to delete an existing distribution list, which has the e-mail alias "RenamedDG01".

The protocol client sends the following request message:

```
<soap:Envelope xmlns:soap="http://schemas.xmlsoap.org/soap/envelope/"
xmlns:xsi="http://www.w3.org/2001/XMLSchema-instance"
xmlns:xsd="http://www.w3.org/2001/XMLSchema">
  <soap:Body>
    <DeleteDistributionGroup
xmlns="http://microsoft.com/webservices/SharePoint/SharepointEmailWS/">
      <Alias>RenamedDG01</Alias>
      <Info>
        <RequestorEmail>adam.carter@example.com</RequestorEmail>
        <RequestId>00000000-0000-0000-0000-000000000000</RequestId>
      </Info>
    </DeleteDistributionGroup>
  </soap:Body>
</soap:Envelope>
```

The protocol server is configured to approve requests automatically. Therefore, it deletes the distribution list and returns the status value "Success" in the following response message:

```
<soap:Envelope xmlns:soap="http://schemas.xmlsoap.org/soap/envelope/"
xmlns:xsi="http://www.w3.org/2001/XMLSchema-instance"
xmlns:xsd="http://www.w3.org/2001/XMLSchema">
  <soap:Body>
    <DeleteDistributionGroupResponse
xmlns="http://microsoft.com/webservices/SharePoint/SharepointEmailWS/">
      <DeleteDistributionGroupResult>
        <JobID>0</JobID>
        <JobStatus>Success</JobStatus>
        <Alias>RenamedDG01</Alias>
      </DeleteDistributionGroupResult>
    </DeleteDistributionGroupResponse>
  </soap:Body>
```

```
</soap:Envelope>
```

## 4.7 Check the Status of a Deletion Request

This scenario demonstrates how to delete a distribution list and check the status of that request before and after the request is processed by the protocol server.

### 4.7.1 Delete a Distribution List

In this example, a protocol client with the e-mail address "adam.carter@example.com" submits a request to delete the existing distribution list that has the e-mail alias "SorosalDL6".

The protocol client sends the following request message:

```
<soap:Envelope xmlns:soap="http://schemas.xmlsoap.org/soap/envelope/"
xmlns:xsi="http://www.w3.org/2001/XMLSchema-instance"
xmlns:xsd="http://www.w3.org/2001/XMLSchema">
  <soap:Body>
    <DeleteDistributionGroup
xmlns="http://microsoft.com/webservices/SharePoint/SharepointEmailWS/">
      <Alias>SorosalDL6</Alias>
      <Info>
        <RequestorEmail>adam.carter@example.com</RequestorEmail>
        <RequestId>00000000-0000-0000-0000-000000000000</RequestId>
      </Info>
    </DeleteDistributionGroup>
  </soap:Body>
</soap:Envelope>
```

The protocol server is not configured to approve requests automatically. Therefore, it creates a job for the request, stores that job as a **RequestStatus** simple type (section [2.2.5.3](#)) with the value "PendingApproval", and returns information about the job in the following response message:

```
<soap:Envelope xmlns:soap="http://schemas.xmlsoap.org/soap/envelope/"
xmlns:xsi="http://www.w3.org/2001/XMLSchema-instance"
xmlns:xsd="http://www.w3.org/2001/XMLSchema">
  <soap:Body>
    <DeleteDistributionGroupResponse
xmlns="http://microsoft.com/webservices/SharePoint/SharepointEmailWS/">
      <DeleteDistributionGroupResult>
        <JobID>108</JobID>
        <JobStatus>PendingApproval</JobStatus>
        <Alias>SorosalDL6</Alias>
      </DeleteDistributionGroupResult>
    </DeleteDistributionGroupResponse>
  </soap:Body>
</soap:Envelope>
```

### 4.7.2 Check the Status of a Job

In this example, a protocol client submits a request to check the status of a job that is associated with the job identifier "108".

The protocol client sends the following request message:

```

<soap:Envelope xmlns:soap="http://schemas.xmlsoap.org/soap/envelope/"
xmlns:xsi="http://www.w3.org/2001/XMLSchema-instance"
xmlns:xsd="http://www.w3.org/2001/XMLSchema">
  <soap:Body>
    <GetJobStatus xmlns="http://microsoft.com/webservices/SharePoint/SharepointEmailWS/">
      <JobID>108</JobID>
    </GetJobStatus>
  </soap:Body>
</soap:Envelope>

```

By referencing the **JobID** element of the **RequestResponse** complex type (section [2.2.4.3](#)) that stores information about the job, the protocol server finds the job, retrieves the status, and sends the following response message:

```

<soap:Envelope xmlns:soap="http://schemas.xmlsoap.org/soap/envelope/"
xmlns:xsi="http://www.w3.org/2001/XMLSchema-instance"
xmlns:xsd="http://www.w3.org/2001/XMLSchema">
  <soap:Body>
    <GetJobStatusResponse
xmlns="http://microsoft.com/webservices/SharePoint/SharepointEmailWS/">
      <GetJobStatusResult>
        <JobID>108</JobID>
        <Comment />
        <JobStatus>PendingApproval</JobStatus>
        <Alias>SorosaldL6</Alias>
      </GetJobStatusResult>
    </GetJobStatusResponse>
  </soap:Body>
</soap:Envelope>

```

After the job completes successfully, the protocol server deletes it from the list of jobs and returns the following response message:

```

<soap:Envelope xmlns:soap="http://schemas.xmlsoap.org/soap/envelope/"
xmlns:xsi="http://www.w3.org/2001/XMLSchema-instance"
xmlns:xsd="http://www.w3.org/2001/XMLSchema">
  <soap:Body>
    <GetJobStatusResponse
xmlns="http://microsoft.com/webservices/SharePoint/SharepointEmailWS/">
      <GetJobStatusResult>
        <JobID>108</JobID>
        <Comment />
        <JobStatus>Success</JobStatus>
        <Alias>SorosaldL6</Alias>
      </GetJobStatusResult>
    </GetJobStatusResponse>
  </soap:Body>
</soap:Envelope>

```

If a protocol client requests the status of the job after it is deleted, the protocol server returns the following error:

```

System.Reflection.TargetInvocationException: Exception has been thrown by the target of an
invocation. ---> System.Web.Services.Protocols.SoapException: Server was unable to process
request. ---> Value does not fall within the expected range.
   at System.Web.Services.Protocols.SoapHttpClientProtocol.ReadResponse(SoapClientMessage
message, WebResponse response, Stream responseStream, Boolean asyncCall)
   at System.Web.Services.Protocols.SoapHttpClientProtocol.Invoke(String methodName, Object[]
parameters)
   at WebSvcClient.SharepointEmailWSProxy.SharepointEmailWS.GetJobStatus(Int32 JobId)

```

```
--- End of inner exception stack trace ---
at System.RuntimeMethodHandle._InvokeMethodFast(Object target, Object[] arguments,
SignatureStruct& sig, MethodAttributes methodAttributes, RuntimeTypeHandle typeOwner)
at System.RuntimeMethodHandle.InvokeMethodFast(Object target, Object[] arguments,
Signature sig, MethodAttributes methodAttributes, RuntimeTypeHandle typeOwner)
at System.Reflection.RuntimeMethodInfo.Invoke(Object obj, BindingFlags invokeAttr, Binder
binder, Object[] parameters, CultureInfo culture, Boolean skipVisibilityChecks)
at System.Reflection.RuntimeMethodInfo.Invoke(Object obj, BindingFlags invokeAttr, Binder
binder, Object[] parameters, CultureInfo culture)
at WebSvcClient.ProxyWrapper.WebMethodCallWorker()
```

Preliminary



## **5 Security**

### **5.1 Security Considerations for Implementers**

None.

### **5.2 Index of Security Parameters**

None.

Preliminary

## 6 Appendix A: Full WSDL

For ease of implementation, the full WSDL and schema are provided in this appendix.

```
<?xml version="1.0" encoding="utf-8"?>
  <wsdl:definitions xmlns:soap="http://schemas.xmlsoap.org/wsdl/soap/"
xmlns:tm="http://microsoft.com/wsdl/mime/textMatching/"
xmlns:soapenc="http://schemas.xmlsoap.org/soap/encoding/"
xmlns:mime="http://schemas.xmlsoap.org/wsdl/mime/"
xmlns:tns="http://microsoft.com/webservices/SharePoint/SharepointEmailWS/"
xmlns:sl="http://microsoft.com/wsdl/types/" xmlns:s="http://www.w3.org/2001/XMLSchema"
xmlns:soap12="http://schemas.xmlsoap.org/wsdl/soap12/"
xmlns:http="http://schemas.xmlsoap.org/wsdl/http/"
targetNamespace="http://microsoft.com/webservices/SharePoint/SharepointEmailWS/"
xmlns:wsdl="http://schemas.xmlsoap.org/wsdl/">
  <wsdl:documentation xmlns:wsdl="http://schemas.xmlsoap.org/wsdl/">Sharepoint Email
Integration Web Service</wsdl:documentation>
  <wsdl:types>
    <s:schema elementFormDefault="qualified"
targetNamespace="http://microsoft.com/webservices/SharePoint/SharepointEmailWS/">
      <s:import namespace="http://microsoft.com/wsdl/types/" />
      <s:element name="CreateContact">
        <s:complexType>
          <s:sequence>
            <s:element name="Alias" type="s:string" />
            <s:element name="FirstName" type="s:string" />
            <s:element name="LastName" type="s:string" />
            <s:element name="ForwardingEmail" type="s:string" />
            <s:element name="Flags" type="tns:ContactFlags" />
          </s:sequence>
        </s:complexType>
      </s:element>
      <s:simpleType name="ContactFlags">
        <s:restriction base="s:string">
          <s:enumeration value="None" />
          <s:enumeration value="OnlyAllowAuthenticatedEmail" />
        </s:restriction>
      </s:simpleType>
      <s:element name="CreateContactResponse">
        <s:complexType>
          <s:sequence>
            <s:element name="CreateContactResult" type="tns:RequestStatus" />
          </s:sequence>
        </s:complexType>
      </s:element>
      <s:simpleType name="RequestStatus">
        <s:restriction base="s:string">
          <s:enumeration value="Success" />
          <s:enumeration value="PendingApproval" />
          <s:enumeration value="ApprovalDenied" />
          <s:enumeration value="DuplicateAlias" />
          <s:enumeration value="InvalidArgument" />
          <s:enumeration value="ServiceNotConfigured" />
          <s:enumeration value="AccessDenied" />
          <s:enumeration value="ServerUnavailable" />
          <s:enumeration value="ObjectNotFound" />
          <s:enumeration value="InvalidMember" />
          <s:enumeration value="InternalError" />
        </s:restriction>
      </s:simpleType>
      <s:element name="DeleteContact">
        <s:complexType>
          <s:sequence>
            <s:element name="Alias" type="s:string" />
          </s:sequence>
        </s:complexType>
      </s:element>
    </s:schema>
  </wsdl:types>

```

```

</s:element>
<s:element name="DeleteContactResponse">
  <s:complexType>
    <s:sequence>
      <s:element name="DeleteContactResult" type="tns:RequestStatus" />
    </s:sequence>
  </s:complexType>
</s:element>
<s:element name="ModifyContact">
  <s:complexType>
    <s:sequence>
      <s:element name="OldAlias" type="s:string" />
      <s:element minOccurs="0" name="NewAlias" type="s:string" />
      <s:element name="FirstName" type="s:string" />
      <s:element name="LastName" type="s:string" />
      <s:element minOccurs="0" name="ForwardingEmail" type="s:string" />
      <s:element name="Flags" type="tns:ContactFlags" />
    </s:sequence>
  </s:complexType>
</s:element>
<s:element name="ModifyContactResponse">
  <s:complexType>
    <s:sequence>
      <s:element name="ModifyContactResult" type="tns:RequestStatus" />
    </s:sequence>
  </s:complexType>
</s:element>
<s:element name="CreateDistributionGroup">
  <s:complexType>
    <s:sequence>
      <s:element name="Alias" type="s:string" />
      <s:element name="Name" type="s:string" />
      <s:element minOccurs="0" name="Description" type="s:string" />
      <s:element minOccurs="0" name="ContactCN" type="s:string" />
      <s:element name="Info" type="tns:RequestInfo" />
      <s:element name="Flags" type="tns:DistributionGroupFlags" />
    </s:sequence>
  </s:complexType>
</s:element>
<s:complexType name="RequestInfo">
  <s:sequence>
    <s:element name="RequestorEmail" type="s:string" />
    <s:element minOccurs="0" name="Justification" type="s:string" />
    <s:element name="RequestId" type="si:guid" />
  </s:sequence>
</s:complexType>
<s:element name="CreateDistributionGroupResponse">
  <s:complexType>
    <s:sequence>
      <s:element name="CreateDistributionGroupResult"
type="tns:RequestResponse" />
    </s:sequence>
  </s:complexType>
</s:element>
<s:complexType name="RequestResponse">
  <s:sequence>
    <s:element name="JobID" type="s:int" />
    <s:element minOccurs="0" name="Comment" type="s:string" />
    <s:element name="JobStatus" type="tns:RequestStatus" />
    <s:element minOccurs="0" name="Alias" type="s:string" />
  </s:sequence>
</s:complexType>
<s:element name="DeleteDistributionGroup">
  <s:complexType>
    <s:sequence>
      <s:element name="Alias" type="s:string" />
      <s:element name="Info" type="tns:RequestInfo" />
    </s:sequence>
  </s:complexType>
</s:element>

```

```

        </s:complexType>
    </s:element>
    <s:element name="DeleteDistributionGroupResponse">
        <s:complexType>
            <s:sequence>
                <s:element name="DeleteDistributionGroupResult"
type="tns:RequestResponse" />
            </s:sequence>
        </s:complexType>
    </s:element>
    <s:element name="RenameDistributionGroup">
        <s:complexType>
            <s:sequence>
                <s:element name="OldAlias" type="s:string" />
                <s:element name="NewAlias" type="s:string" />
                <s:element name="Info" type="tns:RequestInfo" />
            </s:sequence>
        </s:complexType>
    </s:element>
    <s:element name="RenameDistributionGroupResponse">
        <s:complexType>
            <s:sequence>
                <s:element name="RenameDistributionGroupResult"
type="tns:RequestResponse" />
            </s:sequence>
        </s:complexType>
    </s:element>
    <s:element name="ModifyDistributionGroup">
        <s:complexType>
            <s:sequence>
                <s:element name="Alias" type="s:string" />
                <s:element name="Name" type="s:string" />
                <s:element minOccurs="0" name="Description" type="s:string" />
                <s:element minOccurs="0" name="ContactCN" type="s:string" />
                <s:element name="Info" type="tns:RequestInfo" />
                <s:element name="Flags" type="tns:DistributionGroupFlags" />
            </s:sequence>
        </s:complexType>
    </s:element>
    <s:simpleType name="DistributionGroupFlags">
        <s:restriction base="s:string">
            <s:enumeration value="None" />
            <s:enumeration value="OnlyAllowAuthenticatedEmail" />
        </s:restriction>
    </s:simpleType>
    <s:element name="ModifyDistributionGroupResponse">
        <s:complexType>
            <s:sequence>
                <s:element name="ModifyDistributionGroupResult"
type="tns:RequestResponse" />
            </s:sequence>
        </s:complexType>
    </s:element>
    <s:element name="GetJobStatus">
        <s:complexType>
            <s:sequence>
                <s:element name="JobId" type="s:int" />
            </s:sequence>
        </s:complexType>
    </s:element>
    <s:element name="GetJobStatusResponse">
        <s:complexType>
            <s:sequence>
                <s:element name="GetJobStatusResult" type="tns:RequestResponse" />
            </s:sequence>
        </s:complexType>
    </s:element>
    <s:element name="ChangeUsersMembershipInDistributionGroup">

```

```

        <s:complexType>
            <s:sequence>
                <s:element minOccurs="0" name="Alias" type="s:string" />
                <s:element minOccurs="0" name="AddNt4NameList" type="tns:ArrayOfString"
/>
                <s:element minOccurs="0" name="DeleteNt4NameList"
type="tns:ArrayOfString" />
                <s:element name="DeleteAllCurrentMembers" type="s:boolean" />
            </s:sequence>
        </s:complexType>
    </s:element>
    <s:complexType name="ArrayOfString">
        <s:sequence>
            <s:element minOccurs="0" maxOccurs="unbounded" name="string"
nillable="true" type="s:string" />
        </s:sequence>
    </s:complexType>
    <s:element name="ChangeUsersMembershipInDistributionGroupResponse">
        <s:complexType>
            <s:sequence>
                <s:element name="ChangeUsersMembershipInDistributionGroupResult"
type="tns:RequestStatus" />
            </s:sequence>
        </s:complexType>
    </s:element>
    <s:element name="ChangeContactsMembershipInDistributionGroup">
        <s:complexType>
            <s:sequence>
                <s:element name="Alias" type="s:string" />
                <s:element minOccurs="0" name="AddListForContacts"
type="tns:ArrayOfString" />
                <s:element minOccurs="0" name="DeleteListForContacts"
type="tns:ArrayOfString" />
                <s:element name="DeleteAllCurrentMembers" type="s:boolean" />
            </s:sequence>
        </s:complexType>
    </s:element>
    <s:element name="ChangeContactsMembershipInDistributionGroupResponse">
        <s:complexType>
            <s:sequence>
                <s:element name="ChangeContactsMembershipInDistributionGroupResult"
type="tns:RequestStatus" />
            </s:sequence>
        </s:complexType>
    </s:element>
</s:schema>
<s:schema elementFormDefault="qualified"
targetNamespace="http://microsoft.com/wsdl/types/">
    <s:simpleType name="guid">
        <s:restriction base="s:string">
            <s:pattern value="[0-9a-fA-F]{8}-[0-9a-fA-F]{4}-[0-9a-fA-F]{4}-[0-9a-fA-
F]{4}-[0-9a-fA-F]{12}" />
        </s:restriction>
    </s:simpleType>
</s:schema>
</wsdl:types>
<wsdl:message name="CreateContactSoapIn">
    <wsdl:part name="parameters" element="tns:CreateContact" />
</wsdl:message>
<wsdl:message name="CreateContactSoapOut">
    <wsdl:part name="parameters" element="tns:CreateContactResponse" />
</wsdl:message>
<wsdl:message name="DeleteContactSoapIn">
    <wsdl:part name="parameters" element="tns>DeleteContact" />
</wsdl:message>
<wsdl:message name="DeleteContactSoapOut">
    <wsdl:part name="parameters" element="tns>DeleteContactResponse" />
</wsdl:message>

```

```

<wsdl:message name="ModifyContactSoapIn">
  <wsdl:part name="parameters" element="tns:ModifyContact" />
</wsdl:message>
<wsdl:message name="ModifyContactSoapOut">
<wsdl:part name="parameters" element="tns:ModifyContactResponse" />
</wsdl:message>
<wsdl:message name="CreateDistributionGroupSoapIn">
  <wsdl:part name="parameters" element="tns:CreateDistributionGroup" />
</wsdl:message>
<wsdl:message name="CreateDistributionGroupSoapOut">
  <wsdl:part name="parameters" element="tns:CreateDistributionGroupResponse" />
</wsdl:message>
<wsdl:message name="DeleteDistributionGroupSoapIn">
  <wsdl:part name="parameters" element="tns:DeleteDistributionGroup" />
</wsdl:message>
<wsdl:message name="DeleteDistributionGroupSoapOut">
  <wsdl:part name="parameters" element="tns:DeleteDistributionGroupResponse" />
</wsdl:message>
<wsdl:message name="RenameDistributionGroupSoapIn">
  <wsdl:part name="parameters" element="tns:RenameDistributionGroup" />
</wsdl:message>
<wsdl:message name="RenameDistributionGroupSoapOut">
  <wsdl:part name="parameters" element="tns:RenameDistributionGroupResponse" />
</wsdl:message>
<wsdl:message name="ModifyDistributionGroupSoapIn">
  <wsdl:part name="parameters" element="tns:ModifyDistributionGroup" />
</wsdl:message>
<wsdl:message name="ModifyDistributionGroupSoapOut">
  <wsdl:part name="parameters" element="tns:ModifyDistributionGroupResponse" />
</wsdl:message>
<wsdl:message name="GetJobStatusSoapIn">
  <wsdl:part name="parameters" element="tns:GetJobStatus" />
</wsdl:message>
<wsdl:message name="GetJobStatusSoapOut">
  <wsdl:part name="parameters" element="tns:GetJobStatusResponse" />
</wsdl:message>
<wsdl:message name="ChangeUsersMembershipInDistributionGroupSoapIn">
  <wsdl:part name="parameters" element="tns:ChangeUsersMembershipInDistributionGroup" />
</wsdl:message>
<wsdl:message name="ChangeUsersMembershipInDistributionGroupSoapOut">
  <wsdl:part name="parameters"
element="tns:ChangeUsersMembershipInDistributionGroupResponse" />
</wsdl:message>
<wsdl:message name="ChangeContactsMembershipInDistributionGroupSoapIn">
  <wsdl:part name="parameters" element="tns:ChangeContactsMembershipInDistributionGroup"
/>
</wsdl:message>
<wsdl:message name="ChangeContactsMembershipInDistributionGroupSoapOut">
  <wsdl:part name="parameters"
element="tns:ChangeContactsMembershipInDistributionGroupResponse" />
</wsdl:message>
<wsdl:portType name="SharepointEmailWSSoap">
  <wsdl:operation name="CreateContact">
    <wsdl:input message="tns:CreateContactSoapIn" />
    <wsdl:output message="tns:CreateContactSoapOut" />
  </wsdl:operation>
  <wsdl:operation name="DeleteContact">
    <wsdl:input message="tns:DeleteContactSoapIn" />
    <wsdl:output message="tns:DeleteContactSoapOut" />
  </wsdl:operation>
  <wsdl:operation name="ModifyContact">
    <wsdl:input message="tns:ModifyContactSoapIn" />
    <wsdl:output message="tns:ModifyContactSoapOut" />
  </wsdl:operation>
  <wsdl:operation name="CreateDistributionGroup">
    <wsdl:input message="tns:CreateDistributionGroupSoapIn" />
    <wsdl:output message="tns:CreateDistributionGroupSoapOut" />
  </wsdl:operation>

```

```

<wsdl:operation name="DeleteDistributionGroup">
  <wsdl:input message="tns:DeleteDistributionGroupSoapIn" />
  <wsdl:output message="tns:DeleteDistributionGroupSoapOut" />
</wsdl:operation>
<wsdl:operation name="RenameDistributionGroup">
  <wsdl:input message="tns:RenameDistributionGroupSoapIn" />
  <wsdl:output message="tns:RenameDistributionGroupSoapOut" />
</wsdl:operation>
<wsdl:operation name="ModifyDistributionGroup">
  <wsdl:input message="tns:ModifyDistributionGroupSoapIn" />
  <wsdl:output message="tns:ModifyDistributionGroupSoapOut" />
</wsdl:operation>
<wsdl:operation name="GetJobStatus">
  <wsdl:input message="tns:GetJobStatusSoapIn" />
  <wsdl:output message="tns:GetJobStatusSoapOut" />
</wsdl:operation>
<wsdl:operation name="ChangeUsersMembershipInDistributionGroup">
  <wsdl:input message="tns:ChangeUsersMembershipInDistributionGroupSoapIn" />
  <wsdl:output message="tns:ChangeUsersMembershipInDistributionGroupSoapOut" />
</wsdl:operation>
<wsdl:operation name="ChangeContactsMembershipInDistributionGroup">
  <wsdl:input message="tns:ChangeContactsMembershipInDistributionGroupSoapIn" />
  <wsdl:output message="tns:ChangeContactsMembershipInDistributionGroupSoapOut" />
</wsdl:operation>
</wsdl:portType>
<wsdl:binding name="SharepointEmailWSSoap" type="tns:SharepointEmailWSSoap">
  <soap:binding transport="http://schemas.xmlsoap.org/soap/http" />
  <wsdl:operation name="CreateContact">
    <soap:operation
soapAction="http://microsoft.com/webservices/SharePoint/SharepointEmailWS/CreateContact"
style="document" />
    <wsdl:input>
      <soap:body use="literal" />
    </wsdl:input>
    <wsdl:output>
      <soap:body use="literal" />
    </wsdl:output>
  </wsdl:operation>
  <wsdl:operation name="DeleteContact">
    <soap:operation
soapAction="http://microsoft.com/webservices/SharePoint/SharepointEmailWS/DeleteContact"
style="document" />
    <wsdl:input>
      <soap:body use="literal" />
    </wsdl:input>
    <wsdl:output>
      <soap:body use="literal" />
    </wsdl:output>
  </wsdl:operation>
  <wsdl:operation name="ModifyContact">
    <soap:operation
soapAction="http://microsoft.com/webservices/SharePoint/SharepointEmailWS/ModifyContact"
style="document" />
    <wsdl:input>
      <soap:body use="literal" />
    </wsdl:input>
    <wsdl:output>
      <soap:body use="literal" />
    </wsdl:output>
  </wsdl:operation>
  <wsdl:operation name="CreateDistributionGroup">
    <soap:operation
soapAction="http://microsoft.com/webservices/SharePoint/SharepointEmailWS/CreateDistributionG
roup" style="document" />
    <wsdl:input>
      <soap:body use="literal" />
    </wsdl:input>
    <wsdl:output>

```

```

        <soap:body use="literal" />
    </wsdl:output>
</wsdl:operation>
<wsdl:operation name="DeleteDistributionGroup">
    <soap:operation
soapAction="http://microsoft.com/webservices/SharePoint/SharepointEmailWS/DeleteDistributionG
roup" style="document" />
        <wsdl:input>
            <soap:body use="literal" />
        </wsdl:input>
        <wsdl:output>
            <soap:body use="literal" />
        </wsdl:output>
    </wsdl:operation>
<wsdl:operation name="RenameDistributionGroup">
    <soap:operation
soapAction="http://microsoft.com/webservices/SharePoint/SharepointEmailWS/RenameDistributionG
roup" style="document" />
        <wsdl:input>
            <soap:body use="literal" />
        </wsdl:input>
        <wsdl:output>
            <soap:body use="literal" />
        </wsdl:output>
    </wsdl:operation>
<wsdl:operation name="ModifyDistributionGroup">
    <soap:operation
soapAction="http://microsoft.com/webservices/SharePoint/SharepointEmailWS/ModifyDistributionG
roup" style="document" />
        <wsdl:input>
            <soap:body use="literal" />
        </wsdl:input>
        <wsdl:output>
            <soap:body use="literal" />
        </wsdl:output>
    </wsdl:operation>
<wsdl:operation name="GetJobStatus">
    <soap:operation
soapAction="http://microsoft.com/webservices/SharePoint/SharepointEmailWS/GetJobStatus"
style="document" />
        <wsdl:input>
            <soap:body use="literal" />
        </wsdl:input>
        <wsdl:output>
            <soap:body use="literal" />
        </wsdl:output>
    </wsdl:operation>
<wsdl:operation name="ChangeUsersMembershipInDistributionGroup">
    <soap:operation
soapAction="http://microsoft.com/webservices/SharePoint/SharepointEmailWS/ChangeUsersMembersh
ipInDistributionGroup" style="document" />
        <wsdl:input>
            <soap:body use="literal" />
        </wsdl:input>
        <wsdl:output>
            <soap:body use="literal" />
        </wsdl:output>
    </wsdl:operation>
<wsdl:operation name="ChangeContactsMembershipInDistributionGroup">
    <soap:operation
soapAction="http://microsoft.com/webservices/SharePoint/SharepointEmailWS/ChangeContactsMembe
rshipInDistributionGroup" style="document" />
        <wsdl:input>
            <soap:body use="literal" />
        </wsdl:input>
        <wsdl:output>
            <soap:body use="literal" />
        </wsdl:output>
    </wsdl:output>

```



```

    </wsdl:operation>
  </wsdl:binding>
  <wsdl:binding name="SharepointEmailWSSoap12" type="tns:SharepointEmailWSSoap">
    <soap12:binding transport="http://schemas.xmlsoap.org/soap/http" />
    <wsdl:operation name="CreateContact">
      <soap12:operation
soapAction="http://microsoft.com/webservices/SharePoint/SharepointEmailWS/CreateContact"
style="document" />
      <wsdl:input>
        <soap12:body use="literal" />
      </wsdl:input>
      <wsdl:output>
        <soap12:body use="literal" />
      </wsdl:output>
    </wsdl:operation>
    <wsdl:operation name="DeleteContact">
      <soap12:operation
soapAction="http://microsoft.com/webservices/SharePoint/SharepointEmailWS/DeleteContact"
style="document" />
      <wsdl:input>
        <soap12:body use="literal" />
      </wsdl:input>
      <wsdl:output>
        <soap12:body use="literal" />
      </wsdl:output>
    </wsdl:operation>
    <wsdl:operation name="ModifyContact">
      <soap12:operation
soapAction="http://microsoft.com/webservices/SharePoint/SharepointEmailWS/ModifyContact"
style="document" />
      <wsdl:input>
        <soap12:body use="literal" />
      </wsdl:input>
      <wsdl:output>
        <soap12:body use="literal" />
      </wsdl:output>
    </wsdl:operation>
    <wsdl:operation name="CreateDistributionGroup">
      <soap12:operation
soapAction="http://microsoft.com/webservices/SharePoint/SharepointEmailWS/CreateDistributionG
roup" style="document" />
      <wsdl:input>
        <soap12:body use="literal" />
      </wsdl:input>
      <wsdl:output>
        <soap12:body use="literal" />
      </wsdl:output>
    </wsdl:operation>
    <wsdl:operation name="DeleteDistributionGroup">
      <soap12:operation
soapAction="http://microsoft.com/webservices/SharePoint/SharepointEmailWS/DeleteDistributionG
roup" style="document" />
      <wsdl:input>
        <soap12:body use="literal" />
      </wsdl:input>
      <wsdl:output>
        <soap12:body use="literal" />
      </wsdl:output>
    </wsdl:operation>
    <wsdl:operation name="RenameDistributionGroup">
      <soap12:operation
soapAction="http://microsoft.com/webservices/SharePoint/SharepointEmailWS/RenameDistributionG
roup" style="document" />
      <wsdl:input>
        <soap12:body use="literal" />
      </wsdl:input>
      <wsdl:output>
        <soap12:body use="literal" />
      </wsdl:output>
    </wsdl:operation>
  </wsdl:binding>

```

```

        </wsdl:output>
    </wsdl:operation>
    <wsdl:operation name="ModifyDistributionGroup">
        <soap12:operation
soapAction="http://microsoft.com/webservices/SharePoint/SharepointEmailWS/ModifyDistributionG
roup" style="document" />
        <wsdl:input>
            <soap12:body use="literal" />
        </wsdl:input>
        <wsdl:output>
            <soap12:body use="literal" />
        </wsdl:output>
    </wsdl:operation>
    <wsdl:operation name="GetJobStatus">
        <soap12:operation
soapAction="http://microsoft.com/webservices/SharePoint/SharepointEmailWS/GetJobStatus"
style="document" />
        <wsdl:input>
            <soap12:body use="literal" />
        </wsdl:input>
        <wsdl:output>
            <soap12:body use="literal" />
        </wsdl:output>
    </wsdl:operation>
    <wsdl:operation name="ChangeUsersMembershipInDistributionGroup">
        <soap12:operation
soapAction="http://microsoft.com/webservices/SharePoint/SharepointEmailWS/ChangeUsersMembersh
ipInDistributionGroup" style="document" />
        <wsdl:input>
            <soap12:body use="literal" />
        </wsdl:input>
        <wsdl:output>
            <soap12:body use="literal" />
        </wsdl:output>
    </wsdl:operation>
    <wsdl:operation name="ChangeContactsMembershipInDistributionGroup">
        <soap12:operation
soapAction="http://microsoft.com/webservices/SharePoint/SharepointEmailWS/ChangeContactsMembe
rshipInDistributionGroup" style="document" />
        <wsdl:input>
            <soap12:body use="literal" />
        </wsdl:input>
        <wsdl:output>
            <soap12:body use="literal" />
        </wsdl:output>
    </wsdl:operation>
</wsdl:binding>
</wsdl:definitions>

```



## 7 Appendix B: Product Behavior

The information in this specification is applicable to the following Microsoft products or supplemental software. References to product versions include released service packs.

- The 2007 Microsoft Office system
- Microsoft Office 2010 suites
- Microsoft Office 2013
- Windows SharePoint Services 3.0
- Microsoft SharePoint Foundation 2010
- Microsoft SharePoint Foundation 2013
- Microsoft Office 2016 Preview

Exceptions, if any, are noted below. If a service pack or Quick Fix Engineering (QFE) number appears with the product version, behavior changed in that service pack or QFE. The new behavior also applies to subsequent service packs of the product unless otherwise specified. If a product edition appears with the product version, behavior is different in that product edition.

Unless otherwise specified, any statement of optional behavior in this specification that is prescribed using the terms SHOULD or SHOULD NOT implies product behavior in accordance with the SHOULD or SHOULD NOT prescription. Unless otherwise specified, the term MAY implies that the product does not follow the prescription.

[<1> Section 2.2.5.3](#): This type is available only in Office 2013 and SharePoint Foundation 2013.

## 8 Change Tracking

This section identifies changes that were made to this document since the last release. Changes are classified as New, Major, Minor, Editorial, or No change.

The revision class **New** means that a new document is being released.

The revision class **Major** means that the technical content in the document was significantly revised. Major changes affect protocol interoperability or implementation. Examples of major changes are:

- A document revision that incorporates changes to interoperability requirements or functionality.
- The removal of a document from the documentation set.

The revision class **Minor** means that the meaning of the technical content was clarified. Minor changes do not affect protocol interoperability or implementation. Examples of minor changes are updates to clarify ambiguity at the sentence, paragraph, or table level.

The revision class **Editorial** means that the formatting in the technical content was changed. Editorial changes apply to grammatical, formatting, and style issues.

The revision class **No change** means that no new technical changes were introduced. Minor editorial and formatting changes may have been made, but the technical content of the document is identical to the last released version.

Major and minor changes can be described further using the following change types:

- New content added.
- Content updated.
- Content removed.
- New product behavior note added.
- Product behavior note updated.
- Product behavior note removed.
- New protocol syntax added.
- Protocol syntax updated.
- Protocol syntax removed.
- New content added due to protocol revision.
- Content updated due to protocol revision.
- Content removed due to protocol revision.
- New protocol syntax added due to protocol revision.
- Protocol syntax updated due to protocol revision.
- Protocol syntax removed due to protocol revision.
- Obsolete document removed.

Editorial changes are always classified with the change type **Editorially updated**.

Some important terms used in the change type descriptions are defined as follows:

- **Protocol syntax** refers to data elements (such as packets, structures, enumerations, and methods) as well as interfaces.
- **Protocol revision** refers to changes made to a protocol that affect the bits that are sent over the wire.

The changes made to this document are listed in the following table. For more information, please contact [dochelp@microsoft.com](mailto:dochelp@microsoft.com).

Section	Tracking number (if applicable) and description	Major change (Y or N)	Change type
<a href="#">Z</a> Appendix B: Product Behavior	Updated list of supported products.	Y	Content updated due to protocol revision.

Preliminary

## 9 Index

### A

Abstract data model  
[server](#) 20  
Add a contact to a distribution list example ([section 4.1.2](#) 55, [section 4.2.2](#) 57)  
[Applicability](#) 12  
[ArrayOfString complex type](#) 14  
[Attribute groups](#) 19  
[Attributes](#) 19

### C

[Capability negotiation](#) 12  
[Change the e-mail alias of a distribution list example](#) 60  
[Change the name of a distribution list example](#) 59  
[Change tracking](#) 76  
[Check the status of a job example](#) 62  
Client  
[overview](#) 20  
[Common data structures](#) 19  
[Complex types](#) 14  
[ArrayOfString](#) 14  
[RequestInfo](#) 14  
[RequestResponse](#) 15  
[ContactFlags simple type](#) 16  
[Create a contact example](#) 56  
[Create a distribution list example](#) 55

### D

Data model - abstract  
[server](#) 20  
[Delete a contact example](#) 59  
Delete a distribution list example ([section 4.6](#) 61, [section 4.7.1](#) 62)  
[DistributionGroupFlags simple type](#) 16

### E

Elements  
server  
[ChangeContactsMembershipInDistributionGroup](#) 23  
[ChangeContactsMembershipInDistributionGroupResponse](#) 24  
[ChangeUsersMembershipInDistributionGroup](#) 26  
[ChangeUsersMembershipInDistributionGroupResponse](#) 27  
[CreateContact](#) 30  
[CreateContactResponse](#) 30  
[CreateDistributionGroup](#) 33  
[CreateDistributionGroupResponse](#) 33  
[DeleteContact](#) 36  
[DeleteContactResponse](#) 37  
[DeleteDistributionGroup](#) 39  
[DeleteDistributionGroupResponse](#) 39

[GetJobStatus](#) 43  
[GetJobStatusResponse](#) 43  
[ModifyContact](#) 46  
[ModifyContactResponse](#) 46  
[ModifyDistributionGroup](#) 49  
[ModifyDistributionGroupResponse](#) 50  
[RenameDistributionGroup](#) 52  
[RenameDistributionGroupResponse](#) 53

### Events

[local - server](#) 54  
[timer - server](#) 54

### Examples

add a contact to a distribution list ([section 4.1.2](#) 55, [section 4.2.2](#) 57)  
[change the e-mail alias of a distribution list](#) 60  
[change the name of a distribution list](#) 59  
[check the status of a job](#) 62  
[create a contact](#) 56  
[create a distribution list](#) 55  
[delete a contact](#) 59  
delete a distribution list ([section 4.6](#) 61, [section 4.7.1](#) 62)  
[modify a contact](#) 57  
[remove a contact from a distribution list](#) 58

### F

[Fields - vendor-extensible](#) 12  
[Full WSDL](#) 66

### G

[Glossary](#) 8  
[Groups](#) 19  
[guid simple type](#) 17

### I

[Implementer - security considerations](#) 65  
[Index of security parameters](#) 65  
[Informative references](#) 10  
Initialization  
[server](#) 21  
[Introduction](#) 8

### L

Local events  
[server](#) 54

### M

Message processing  
[server](#) 21  
Messages  
[ArrayOfString complex type](#) 14  
[attribute groups](#) 19  
[attributes](#) 19  
[common data structures](#) 19  
[complex types](#) 14

- [ContactFlags simple type](#) 16
- [DistributionGroupFlags simple type](#) 16
- [elements](#) 14
- [enumerated](#) 14
- [groups](#) 19
- [guid simple type](#) 17
- [namespaces](#) 13
- [RequestInfo complex type](#) 14
- [RequestResponse complex type](#) 15
- [RequestStatus simple type](#) 17
- server
  - [ChangeContactsMembershipInDistributionGroup SoapIn](#) 22
  - [ChangeContactsMembershipInDistributionGroup SoapOut](#) 23
  - [ChangeUsersMembershipInDistributionGroup SoapIn](#) 26
  - [ChangeUsersMembershipInDistributionGroup SoapOut](#) 26
  - [CreateContactSoapIn](#) 29
  - [CreateContactSoapOut](#) 29
  - [CreateDistributionGroupSoapIn](#) 32
  - [CreateDistributionGroupSoapOut](#) 32
  - [DeleteContactSoapIn](#) 36
  - [DeleteContactSoapOut](#) 36
  - [DeleteDistributionGroupSoapIn](#) 38
  - [DeleteDistributionGroupSoapOut](#) 39
  - [GetJobStatusSoapIn](#) 42
  - [GetJobStatusSoapOut](#) 42
  - [ModifyContactSoapIn](#) 45
  - [ModifyContactSoapOut](#) 45
  - [ModifyDistributionGroupSoapIn](#) 48
  - [ModifyDistributionGroupSoapOut](#) 48
  - [RenameDistributionGroupSoapIn](#) 52
  - [RenameDistributionGroupSoapOut](#) 52
- [simple types](#) 16
- [syntax](#) 13
- [transport](#) 13
- [Modify a contact example](#) 57

## N

- [Namespaces](#) 13
- [Normative references](#) 9

## O

- Operations
  - [ChangeContactsMembershipInDistributionGroup](#) 22
  - [ChangeUsersMembershipInDistributionGroup](#) 25
  - [CreateContact](#) 28
  - [CreateDistributionGroup](#) 31
  - [DeleteContact](#) 35
  - [DeleteDistributionGroup](#) 38
  - [GetJobStatus](#) 41
  - [ModifyContact](#) 44
  - [ModifyDistributionGroup](#) 48
  - [RenameDistributionGroup](#) 51
- [Overview \(synopsis\)](#) 11

## P

- [Parameters - security index](#) 65
- [Preconditions](#) 11
- [Prerequisites](#) 11
- [Product behavior](#) 75
- Protocol Details
  - [overview](#) 20

## R

- References
  - [informative](#) 10
  - [normative](#) 9
  - [Relationship to other protocols](#) 11
  - [Remove a contact from a distribution list example](#) 58
  - [RequestInfo complex type](#) 14
  - [RequestResponse complex type](#) 15
  - [RequestStatus simple type](#) 17

## S

- Security
  - [implementer considerations](#) 65
  - [parameter index](#) 65
- Sequencing rules
  - [server](#) 21
- Server
  - [abstract data model](#) 20
  - [ChangeContactsMembershipInDistributionGroup operation](#) 22
  - [ChangeUsersMembershipInDistributionGroup operation](#) 25
  - [CreateContact operation](#) 28
  - [CreateDistributionGroup operation](#) 31
  - [DeleteContact operation](#) 35
  - [DeleteDistributionGroup operation](#) 38
  - [GetJobStatus operation](#) 41
  - [initialization](#) 21
  - [local events](#) 54
  - [message processing](#) 21
  - [ModifyContact operation](#) 44
  - [ModifyDistributionGroup operation](#) 48
  - [overview](#) 20
  - [RenameDistributionGroup operation](#) 51
  - [sequencing rules](#) 21
- SharepointEmailWSSoap
  - [details](#) 20
  - [timer events](#) 54
  - [timers](#) 21
- [Simple types](#) 16
  - [ContactFlags](#) 16
  - [DistributionGroupFlags](#) 16
  - [guid](#) 17
  - [RequestStatus](#) 17
- [Standards assignments](#) 12
- Syntax
  - [messages - overview](#) 13

## T

- Timer events

[server](#) 54  
Timers  
  [server](#) 21  
[Tracking changes](#) 76  
[Transport](#) 13  
Types  
  [complex](#) 14  
    [ArrayOfString](#) 14  
    [RequestInfo](#) 14  
    [RequestResponse](#) 15  
  [simple](#) 16  
    [ContactFlags](#) 16  
    [DistributionGroupFlags](#) 16  
    [RequestStatus](#) 17

## **V**

[Vendor-extensible fields](#) 12  
[Versioning](#) 12

## **W**

[WSDL](#) 66

Preliminary