

[MS-SHDACCWS]:

Shared Access Web Service Protocol

Intellectual Property Rights Notice for Open Specifications Documentation

- **Technical Documentation.** Microsoft publishes Open Specifications documentation for protocols, file formats, languages, standards as well as overviews of the interaction among each of these technologies.
- **Copyrights.** This documentation is covered by Microsoft copyrights. Regardless of any other terms that are contained in the terms of use for the Microsoft website that hosts this documentation, you may make copies of it in order to develop implementations of the technologies described in the Open Specifications and may distribute portions of it in your implementations using these technologies or your documentation as necessary to properly document the implementation. You may also distribute in your implementation, with or without modification, any schema, IDL's, or code samples that are included in the documentation. This permission also applies to any documents that are referenced in the Open Specifications.
- **No Trade Secrets.** Microsoft does not claim any trade secret rights in this documentation.
- **Patents.** Microsoft has patents that may cover your implementations of the technologies described in the Open Specifications. Neither this notice nor Microsoft's delivery of the documentation grants any licenses under those or any other Microsoft patents. However, a given Open Specification may be covered by Microsoft [Open Specification Promise](#) or the [Community Promise](#). If you would prefer a written license, or if the technologies described in the Open Specifications are not covered by the Open Specifications Promise or Community Promise, as applicable, patent licenses are available by contacting iplg@microsoft.com.
- **Trademarks.** The names of companies and products contained in this documentation may be covered by trademarks or similar intellectual property rights. This notice does not grant any licenses under those rights. For a list of Microsoft trademarks, visit www.microsoft.com/trademarks.
- **Fictitious Names.** The example companies, organizations, products, domain names, e-mail addresses, logos, people, places, and events depicted in this documentation are fictitious. No association with any real company, organization, product, domain name, email address, logo, person, place, or event is intended or should be inferred.

Reservation of Rights. All other rights are reserved, and this notice does not grant any rights other than specifically described above, whether by implication, estoppel, or otherwise.

Tools. The Open Specifications do not require the use of Microsoft programming tools or programming environments in order for you to develop an implementation. If you have access to Microsoft programming tools and environments you are free to take advantage of them. Certain Open Specifications are intended for use in conjunction with publicly available standard specifications and network programming art, and assumes that the reader either is familiar with the aforementioned material or has immediate access to it.

Preliminary Documentation. This Open Specification provides documentation for past and current releases and/or for the pre-release version of this technology. This Open Specification is final documentation for past or current releases as specifically noted in the document, as applicable; it is preliminary documentation for the pre-release versions. Microsoft will release final documentation in connection with the commercial release of the updated or new version of this technology. As the documentation may change between this preliminary version and the final version of this technology, there are risks in relying on preliminary documentation. To the extent that you incur additional

development obligations or any other costs as a result of relying on this preliminary documentation, you do so at your own risk.

Preliminary

Revision Summary

Date	Revision History	Revision Class	Comments
7/13/2009	0.1	Major	Initial Availability
8/28/2009	0.2	Editorial	Revised and edited the technical content
11/6/2009	0.3	Editorial	Revised and edited the technical content
2/19/2010	1.0	Editorial	Revised and edited the technical content
3/31/2010	1.01	Editorial	Revised and edited the technical content
4/30/2010	1.02	Editorial	Revised and edited the technical content
6/7/2010	1.03	Editorial	Revised and edited the technical content
6/29/2010	1.04	Minor	Clarified the meaning of the technical content.
7/23/2010	1.04	No Change	No changes to the meaning, language, or formatting of the technical content.
9/27/2010	1.04	No Change	No changes to the meaning, language, or formatting of the technical content.
11/15/2010	1.04	No Change	No changes to the meaning, language, or formatting of the technical content.
12/17/2010	1.05	Editorial	Changed language and formatting in the technical content.
3/18/2011	1.05	No Change	No changes to the meaning, language, or formatting of the technical content.
6/10/2011	1.05	No Change	No changes to the meaning, language, or formatting of the technical content.
1/20/2012	2.0	Major	Significantly changed the technical content.
4/11/2012	2.0	No Change	No changes to the meaning, language, or formatting of the technical content.
7/16/2012	2.0	No Change	No changes to the meaning, language, or formatting of the technical content.
9/12/2012	2.0	No Change	No changes to the meaning, language, or formatting of the technical content.
10/8/2012	2.0.1	Editorial	Changed language and formatting in the technical content.
2/11/2013	2.0.1	No Change	No changes to the meaning, language, or formatting of the technical content.
7/30/2013	2.1	Minor	Clarified the meaning of the technical content.
11/18/2013	2.1	No Change	No changes to the meaning, language, or formatting of the technical content.
2/10/2014	2.1	No Change	No changes to the meaning, language, or formatting of the technical content.
4/30/2014	2.1	No Change	No changes to the meaning, language, or formatting of the technical content.

Date	Revision History	Revision Class	Comments
7/31/2014	2.1	No Change	No changes to the meaning, language, or formatting of the technical content.
10/30/2014	2.1	No Change	No changes to the meaning, language, or formatting of the technical content.
3/16/2015	3.0	Major	Significantly changed the technical content.
6/30/2015	4.0	Major	Significantly changed the technical content.

Preliminary

Table of Contents

1	Introduction	6
1.1	Glossary	6
1.2	References	7
1.2.1	Normative References	7
1.2.2	Informative References	8
1.3	Overview	8
1.4	Relationship to Other Protocols	8
1.5	Prerequisites/Preconditions	8
1.6	Applicability Statement	8
1.7	Versioning and Capability Negotiation	9
1.8	Vendor-Extensible Fields	9
1.9	Standards Assignments	9
2	Messages	10
2.1	Transport	10
2.2	Common Message Syntax	10
2.2.1	Namespaces	10
2.2.2	Messages	10
2.2.3	Elements	11
2.2.4	Complex Types	11
2.2.5	Simple Types	11
2.2.6	Attributes	11
2.2.7	Groups	11
2.2.8	Attribute Groups	11
2.2.9	Common Data Structures	11
3	Protocol Details	12
3.1	Server Details	12
3.1.1	Abstract Data Model	12
3.1.2	Timers	12
3.1.3	Initialization	12
3.1.4	Message Processing Events and Sequencing Rules	12
3.1.4.1	IsOnlyClient	12
3.1.4.1.1	Messages	13
3.1.4.1.1.1	IsOnlyClientSoapIn	13
3.1.4.1.1.2	IsOnlyClientSoapOut	13
3.1.4.1.2	Elements	13
3.1.4.1.2.1	IsOnlyClient	13
3.1.4.1.2.2	IsOnlyClientResponse	14
3.1.5	Timer Events	14
3.1.6	Other Local Events	14
4	Protocol Examples	15
4.1	IsOnlyClient	15
5	Security	16
5.1	Security Considerations for Implementers	16
5.2	Index of Security Parameters	16
6	Appendix A: Full WSDL	17
7	Appendix B: Product Behavior	19
8	Change Tracking	20
9	Index	22

1 Introduction

The Shared Access Web Service Protocol is used for determining whether a document is being co-authored.

Sections 1.8, 2, and 3 of this specification are normative and can contain the terms MAY, SHOULD, MUST, MUST NOT, and SHOULD NOT as defined in [\[RFC2119\]](#). Sections 1.5 and 1.9 are also normative but do not contain those terms. All other sections and examples in this specification are informative.

1.1 Glossary

The following terms are specific to this document:

co-authoring transition: An increase or decrease in the number of users who are currently editing a file.

Hypertext Transfer Protocol (HTTP): An application-level protocol for distributed, collaborative, hypermedia information systems (text, graphic images, sound, video, and other multimedia files) on the World Wide Web.

Hypertext Transfer Protocol over Secure Sockets Layer (HTTPS): An extension of **HTTP** that securely encrypts and decrypts webpage requests.

site: A group of related webpages that is hosted by a server on the World Wide Web or an intranet. Each website has its own entry points, metadata, administration settings, and workflows. Also referred to as web site.

SOAP: A lightweight protocol for exchanging structured information in a decentralized, distributed environment. **SOAP** uses XML technologies to define an extensible messaging framework, which provides a message construct that can be exchanged over a variety of underlying protocols. The framework has been designed to be independent of any particular programming model and other implementation-specific semantics. SOAP 1.2 supersedes SOAP 1.1. See [\[SOAP1.2-1/2003\]](#).

SOAP action: The HTTP request header field used to indicate the intent of the **SOAP** request, using a URI value. See [\[SOAP1.1\]](#) section 6.1.1 for more information.

SOAP body: A container for the payload data being delivered by a SOAP message to its recipient. See [\[SOAP1.2-1/2007\]](#) section 5.3 for more information.

SOAP envelope: A container for SOAP message information and the root element of a **SOAP** document. See [\[SOAP1.2-1/2007\]](#) section 5.1 for more information.

SOAP fault: A container for error and status information within a SOAP message. See [\[SOAP1.2-1/2007\]](#) section 5.4 for more information.

Uniform Resource Locator (URL): A string of characters in a standardized format that identifies a document or resource on the World Wide Web. The format is as specified in [\[RFC1738\]](#).

Web Services Description Language (WSDL): An XML format for describing network services as a set of endpoints that operate on messages that contain either document-oriented or procedure-oriented information. The operations and messages are described abstractly and are bound to a concrete network protocol and message format in order to define an endpoint. Related concrete endpoints are combined into abstract endpoints, which describe a network service. WSDL is extensible, which allows the description of endpoints and their messages regardless of the message formats or network protocols that are used.

WSDL operation: A single action or function of a web service. The execution of a WSDL operation typically requires the exchange of messages between the service requestor and the service provider.

XML namespace: A collection of names that is used to identify elements, types, and attributes in XML documents identified in a URI reference [RFC3986]. A combination of XML namespace and local name allows XML documents to use elements, types, and attributes that have the same names but come from different sources. For more information, see [XMLNS-2ED].

XML namespace prefix: An abbreviated form of an **XML namespace**, as described in [XML].

XML schema: A description of a type of XML document that is typically expressed in terms of constraints on the structure and content of documents of that type, in addition to the basic syntax constraints that are imposed by XML itself. An XML schema provides a view of a document type at a relatively high level of abstraction.

MAY, SHOULD, MUST, SHOULD NOT, MUST NOT: These terms (in all caps) are used as defined in [RFC2119]. All statements of optional behavior use either MAY, SHOULD, or SHOULD NOT.

1.2 References

Links to a document in the Microsoft Open Specifications library point to the correct section in the most recently published version of the referenced document. However, because individual documents in the library are not updated at the same time, the section numbers in the documents may not match. You can confirm the correct section numbering by checking the [Errata](#).

1.2.1 Normative References

We conduct frequent surveys of the normative references to assure their continued availability. If you have any issue with finding a normative reference, please contact dochelp@microsoft.com. We will assist you in finding the relevant information.

[MS-LISTSWS] Microsoft Corporation, "[Lists Web Service Protocol](#)".

[MS-WSSCAML] Microsoft Corporation, "[Collaborative Application Markup Language \(CAML\) Structure](#)".

[RFC2119] Bradner, S., "Key words for use in RFCs to Indicate Requirement Levels", BCP 14, RFC 2119, March 1997, <http://www.rfc-editor.org/rfc/rfc2119.txt>

[RFC2616] Fielding, R., Gettys, J., Mogul, J., et al., "Hypertext Transfer Protocol -- HTTP/1.1", RFC 2616, June 1999, <http://www.rfc-editor.org/rfc/rfc2616.txt>

[SOAP1.1] Box, D., Ehnebuske, D., Kakivaya, G., et al., "Simple Object Access Protocol (SOAP) 1.1", May 2000, <http://www.w3.org/TR/2000/NOTE-SOAP-20000508/>

[SOAP1.2/1] Gudgin, M., Hadley, M., Mendelsohn, N., Moreau, J., and Nielsen, H.F., "SOAP Version 1.2 Part 1: Messaging Framework", W3C Recommendation, June 2003, <http://www.w3.org/TR/2003/REC-soap12-part1-20030624>

[SOAP1.2/2] Gudgin, M., Hadley, M., Mendelsohn, N., Moreau, J., and Nielsen, H.F., "SOAP Version 1.2 Part 2: Adjuncts", W3C Recommendation, June 2003, <http://www.w3.org/TR/2003/REC-soap12-part2-20030624>

[WSDL] Christensen, E., Curbera, F., Meredith, G., and Weerawarana, S., "Web Services Description Language (WSDL) 1.1", W3C Note, March 2001, <http://www.w3.org/TR/2001/NOTE-wsdl-20010315>

[XMLNS] Bray, T., Hollander, D., Layman, A., et al., Eds., "Namespaces in XML 1.0 (Third Edition)", W3C Recommendation, December 2009, <http://www.w3.org/TR/2009/REC-xml-names-20091208/>

[XMLSCHEMA1] Thompson, H., Beech, D., Maloney, M., and Mendelsohn, N., Eds., "XML Schema Part 1: Structures", W3C Recommendation, May 2001, <http://www.w3.org/TR/2001/REC-xmlschema-1-20010502/>

[XMLSCHEMA2] Biron, P.V., Ed. and Malhotra, A., Ed., "XML Schema Part 2: Datatypes", W3C Recommendation, May 2001, <http://www.w3.org/TR/2001/REC-xmlschema-2-20010502/>

1.2.2 Informative References

[RFC2818] Rescorla, E., "HTTP Over TLS", RFC 2818, May 2000, <http://www.rfc-editor.org/rfc/rfc2818.txt>

1.3 Overview

The protocol allows clients to determine whether a **co-authoring transition** request was made for a document. A typical scenario for using this protocol is an authoring client that allows multiple users edit a document in a co-authoring session.

1.4 Relationship to Other Protocols

This protocol uses the **SOAP** message protocol for formatting request and response messages, as described in [\[SOAP1.1\]](#), [\[SOAP1.2/1\]](#) and [\[SOAP1.2/2\]](#). It transmits those messages by using **HTTP**, as described in [\[RFC2616\]](#), or **Hypertext Transfer Protocol over Secure Sockets Layer (HTTPS)**, as described in [\[RFC2818\]](#).

The following diagram shows the underlying messaging and transport stack used by the protocol:

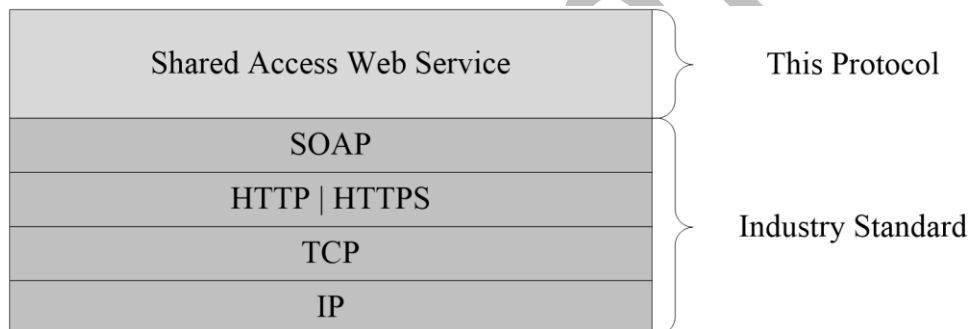


Figure 1: This protocol in relation to other protocols

1.5 Prerequisites/Preconditions

This protocol operates against a **site** that is identified by a **URL** that is known by protocol clients. The protocol server endpoint is formed by appending `"/_vti_bin/sharedaccess.asmx"` to the URL of the site, for example `http://www.contoso.com/Repository/_vti_bin/sharedaccess.asmx`.

1.6 Applicability Statement

This protocol can be used by a protocol client to determine if it is the only client currently editing a document stored on a collaboration server, or alternately, if it needs to transition to a shared editing mode.

1.7 Versioning and Capability Negotiation

This protocol uses multiple transports with Simple Object Access Protocol (SOAP) as described in section [2.1](#).

1.8 Vendor-Extensible Fields

None.

1.9 Standards Assignments

None.

Preliminary

2 Messages

2.1 Transport

Protocol servers MUST support SOAP over HTTP. Protocol servers SHOULD additionally support SOAP over HTTPS for securing communication with clients.

Protocol messages MUST be formatted as specified either in [\[SOAP1.1\]](#), Section 4, **SOAP envelope** or in [\[SOAP1.2/1\]](#), Section 5, SOAP Message Construct. Protocol server faults MUST be returned either using HTTP Status Codes as specified in [\[RFC2616\]](#), Section 10, Status Code Definitions, or using **SOAP faults** as specified either in [\[SOAP1.1\]](#), Section 4.4. or in [\[SOAP1.2/1\]](#), Section 5.4.

2.2 Common Message Syntax

This section contains common definitions that are used by this protocol. The syntax of the definitions uses **XML schema**, as specified in [\[XMLSCHEMA1\]](#) and [\[XMLSCHEMA2\]](#), and **WSDL**, as specified in [\[WSDL\]](#).

2.2.1 Namespaces

This protocol specifies and references **XML namespaces** using the mechanisms specified in [\[XMLNS\]](#). Although this document associates an **XML namespace prefix** for each XML namespace that is used, the choice of any particular XML namespace prefix is implementation-specific and not significant for interoperability.

Prefix	Namespace URI	Reference
soap	http://schemas.xmlsoap.org/wsdl/soap/	[SOAP1.1]
tns	http://schemas.microsoft.com/sharepoint/soap/	[MS-LISTSWS]
s1	http://microsoft.com/wsdl/types/	[MS-LISTSWS]
s	http://www.w3.org/2001/XMLSchema	[XMLSCHEMA1]
soap12	http://schemas.xmlsoap.org/wsdl/soap12/	[SOAP1.2/1] [SOAP1.2/2]
wsdl	http://schemas.xmlsoap.org/wsdl/	[WSDL]
mime	http://schemas.xmlsoap.org/wsdl/mime/	
http	http://schemas.xmlsoap.org/wsdl/http/	
tm	http://microsoft.com/wsdl/mime/textMatching/	
soapenc	http://schemas.xmlsoap.org/soap/encoding/	
core	http://schemas.microsoft.com/sharepoint/soap/	[MS-WSSCAML]

2.2.2 Messages

This specification does not define any common WSDL message definitions.

2.2.3 Elements

This specification does not define any common XML schema element definitions.

2.2.4 Complex Types

This specification does not define any common XML schema complex type definitions.

2.2.5 Simple Types

This specification does not define any common XML schema simple type definitions.

2.2.6 Attributes

This specification does not define any common XML schema attribute definitions.

2.2.7 Groups

This specification does not define any common XML schema group definitions.

2.2.8 Attribute Groups

This specification does not define any common XML schema attribute group definitions.

2.2.9 Common Data Structures

This specification does not define any common XML schema data structures.

3 Protocol Details

The client side of this protocol is simply a pass-through. That is, no additional timers or other state is required on the client side of this protocol. Calls made by the higher-layer protocol or application are passed directly to the transport, and the results returned by the transport are passed directly back to the higher-layer protocol or application.

Except where specified, protocol clients SHOULD interpret HTTP Status Codes returned by the protocol server as specified in [\[RFC2616\]](#), Section 10, Status Code Definitions.

This protocol allows protocol servers to notify protocol clients of application-level faults using SOAP faults. Except where specified, these SOAP faults are not significant for interoperability, and protocol clients can interpret them in an implementation-specific manner.

This protocol allows protocol servers to perform implementation-specific authorization checks and notify protocol clients of authorization faults either using HTTP Status Codes or using SOAP faults as specified previously in this section.

3.1 Server Details

All operations consist of a basic request-response pair and the server treats each request as an independent transaction that is unrelated to any previous request.

3.1.1 Abstract Data Model

None.

3.1.2 Timers

None.

3.1.3 Initialization

None.

3.1.4 Message Processing Events and Sequencing Rules

The following table summarizes the list of **WSDL operations** as defined by this specification:

Operation	Description
IsOnlyClient	Specifies whether a co-authoring transition request was made for a document.

3.1.4.1 IsOnlyClient

The method is used by a protocol client to determine whether a co-authoring transition request was made for a document.

```
<wsdl:operation name="IsOnlyClient">
  <wsdl:input message="tns:IsOnlyClientSoapIn" />
  <wsdl:output message="tns:IsOnlyClientSoapOut" />
</wsdl:operation>
```

The protocol client sends an **IsOnlyClientSoapIn** request message and the protocol server responds with an **IsOnlyClientSoapOut** response message.

3.1.4.1.1 Messages

The following table summarizes the set of WSDL message definitions that are specific to this operation.

Message	Description
IsOnlyClientSoapIn	The request to determine whether a co-authoring transition request was made for a document.
IsOnlyClientSoapOut	The response to a request to determine whether a co-authoring transition request was made for a document.

3.1.4.1.1.1 IsOnlyClientSoapIn

This message is the request of the **IsOnlyClient** operation.

The **SOAP action** value of the message is defined as:

```
http://schemas.microsoft.com/sharepoint/soap/IsOnlyClient
```

The **SOAP body** contains an **IsOnlyClient** element.

3.1.4.1.1.2 IsOnlyClientSoapOut

This message is the response of the **IsOnlyClient** operation.

The SOAP body contains an **IsOnlyClientResponse** element.

3.1.4.1.2 Elements

The following table summarizes the XML schema element definitions that are specific to this operation.

Element	Description
IsOnlyClient	The request to determine whether a co-authoring transition request was made for a document.
IsOnlyClientResponse	Contains the response to a request to determine whether a co-authoring transition request was made for a document.

3.1.4.1.2.1 IsOnlyClient

The **IsOnlyClient** element defines the input parameters for **IsOnlyClient** operation.

```
<s:element name="IsOnlyClient">  
  <s:complexType>  
    <s:sequence>
```

```
<s:element minOccurs="1" maxOccurs="1" name="id"
type="core:UniqueIdentifierWithOrWithoutBraces" />

</s:sequence>
</s:complexType>
</s:element>
```

id : The identifier of the document in the server. Note that `core:UniqueIdentifierWithOrWithoutBraces` is specified in [\[MS-WSSCAML\]](#) section 2.1.18.

3.1.4.1.2.2 IsOnlyClientResponse

`IsOnlyClientResponse` specifies the output of the **IsOnlyClient** operation.

```
<s:element name="IsOnlyClientResponse">
  <s:complexType>
    <s:sequence>
      <s:element minOccurs="1" maxOccurs="1" name="IsOnlyClientResult" type="s:boolean" />
    </s:sequence>
  </s:complexType>
</s:element>
```

IsOnlyClientResult : The value of this element **MUST** be false if there was a co-authoring transition request for the document. In all other cases, the value **MUST** be true.

3.1.5 Timer Events

None.

3.1.6 Other Local Events

None.

4 Protocol Examples

4.1 IsOnlyClient

Overall scenario: A protocol client wants to know if a document is transitioning into co-authoring mode. It sends a request to the server to verify if it is the only client editing the document.

The following example shows a sample request where the id element refers to the document identifier.

```
<?xml version="1.0" encoding="utf-8"?>
<soap:Envelope xmlns:xsi="http://www.w3.org/2001/XMLSchema-instance"
xmlns:xsd="http://www.w3.org/2001/XMLSchema"

xmlns:soap="http://schemas.xmlsoap.org/soap/envelope/">
  <soap:Body>
    <IsOnlyClient xmlns="http://schemas.microsoft.com/sharepoint/soap/">
      <id>{3F2504E0-4F89-11D3-9A0C-0305E82C3301}</id>
    </IsOnlyClient>
  </soap:Body>
</soap:Envelope>
```

The following example shows a sample response from the server.

```
<?xml version="1.0" encoding="utf-8" ?>
<soap:Envelope xmlns:soap="http://schemas.xmlsoap.org/soap/envelope/"
xmlns:xsi="http://www.w3.org/2001/XMLSchema-instance"
xmlns:xsd="http://www.w3.org/2001/XMLSchema">
  <soap:Body>
    <IsOnlyClientResponse xmlns="http://schemas.microsoft.com/sharepoint/soap/">
      <IsOnlyClientResult>true</IsOnlyClientResult>
    </IsOnlyClientResponse>
  </soap:Body>
</soap:Envelope>
```

5 Security

5.1 Security Considerations for Implementers

None.

5.2 Index of Security Parameters

None.

Preliminary

6 Appendix A: Full WSDL

For ease of implementation, the full WSDL and schema are provided in this appendix.

```
<?xml version="1.0"?>
<wsdl:definitions xmlns:soap="http://schemas.xmlsoap.org/wsdl/soap/"
xmlns:tm="http://microsoft.com/wsdl/mime/textMatching/"
xmlns:soapenc="http://schemas.xmlsoap.org/soap/encoding/"
xmlns:mime="http://schemas.xmlsoap.org/wsdl/mime/"
xmlns:tns="http://schemas.microsoft.com/sharepoint/soap/"
xmlns:sl="http://microsoft.com/wsdl/types/" xmlns:s="http://www.w3.org/2001/XMLSchema"
xmlns:soap12="http://schemas.xmlsoap.org/wsdl/soap12/"
xmlns:http="http://schemas.xmlsoap.org/wsdl/http/"
targetNamespace="http://schemas.microsoft.com/sharepoint/soap/"
xmlns:wsdl="http://schemas.xmlsoap.org/wsdl/"
xmlns:core="http://schemas.microsoft.com/sharepoint/soap/">
  <wsdl:types>
    <s:schema elementFormDefault="qualified"
targetNamespace="http://schemas.microsoft.com/sharepoint/soap/">
      <s:import namespace="http://microsoft.com/wsdl/types/" />
      <s:element name="IsOnlyClient">
        <s:complexType>
          <s:sequence>
            <s:element minOccurs="1" maxOccurs="1" name="id"
type="core:UniqueIdentifierWithOrWithoutBraces" />
          </s:sequence>
        </s:complexType>
      </s:element>
      <s:element name="IsOnlyClientResponse">
        <s:complexType>
          <s:sequence>
            <s:element minOccurs="1" maxOccurs="1" name="IsOnlyClientResult" type="s:boolean"
/>
          </s:sequence>
        </s:complexType>
      </s:element>
    </s:schema>
    <s:schema elementFormDefault="qualified"
targetNamespace="http://microsoft.com/wsdl/types/">
      </s:schema>
    </wsdl:types>
    <wsdl:message name="IsOnlyClientSoapIn">
      <wsdl:part name="parameters" element="tns:IsOnlyClient" />
    </wsdl:message>
    <wsdl:message name="IsOnlyClientSoapOut">
      <wsdl:part name="parameters" element="tns:IsOnlyClientResponse" />
    </wsdl:message>
    <wsdl:portType name="SharedAccessSoap">
      <wsdl:operation name="IsOnlyClient">
        <wsdl:input message="tns:IsOnlyClientSoapIn" />
        <wsdl:output message="tns:IsOnlyClientSoapOut" />
      </wsdl:operation>
    </wsdl:portType>
    <wsdl:binding name="SharedAccessSoap" type="tns:SharedAccessSoap">
      <soap:binding transport="http://schemas.xmlsoap.org/soap/http" />
      <wsdl:operation name="IsOnlyClient">
        <soap:operation soapAction="http://schemas.microsoft.com/sharepoint/soap/IsOnlyClient"
style="document" />
        <wsdl:input>
          <soap:body use="literal" />
        </wsdl:input>
        <wsdl:output>
          <soap:body use="literal" />
        </wsdl:output>
      </wsdl:operation>
    </wsdl:binding>
    <wsdl:binding name="SharedAccessSoap12" type="tns:SharedAccessSoap">
```

```
<soap12:binding transport="http://schemas.xmlsoap.org/soap/http" />
<wsdl:operation name="IsOnlyClient">
  <soap12:operation
soapAction="http://schemas.microsoft.com/sharepoint/soap/IsOnlyClient" style="document" />
  <wsdl:input>
    <soap12:body use="literal" />
  </wsdl:input>
  <wsdl:output>
    <soap12:body use="literal" />
  </wsdl:output>
</wsdl:operation>
</wsdl:binding>
</wsdl:definitions>
```

Preliminary

7 Appendix B: Product Behavior

The information in this specification is applicable to the following Microsoft products or supplemental software. References to product versions include released service packs.

- Microsoft Office 2010 suites
- Microsoft SharePoint Foundation 2010
- Microsoft Office 2013
- Microsoft SharePoint Foundation 2013
- Windows 8.1 Update
- Microsoft Office 2016 Preview
- Windows 10 operating system

Exceptions, if any, are noted below. If a service pack or Quick Fix Engineering (QFE) number appears with the product version, behavior changed in that service pack or QFE. The new behavior also applies to subsequent service packs of the product unless otherwise specified. If a product edition appears with the product version, behavior is different in that product edition.

Unless otherwise specified, any statement of optional behavior in this specification that is prescribed using the terms SHOULD or SHOULD NOT implies product behavior in accordance with the SHOULD or SHOULD NOT prescription. Unless otherwise specified, the term MAY implies that the product does not follow the prescription.

8 Change Tracking

This section identifies changes that were made to this document since the last release. Changes are classified as New, Major, Minor, Editorial, or No change.

The revision class **New** means that a new document is being released.

The revision class **Major** means that the technical content in the document was significantly revised. Major changes affect protocol interoperability or implementation. Examples of major changes are:

- A document revision that incorporates changes to interoperability requirements or functionality.
- The removal of a document from the documentation set.

The revision class **Minor** means that the meaning of the technical content was clarified. Minor changes do not affect protocol interoperability or implementation. Examples of minor changes are updates to clarify ambiguity at the sentence, paragraph, or table level.

The revision class **Editorial** means that the formatting in the technical content was changed. Editorial changes apply to grammatical, formatting, and style issues.

The revision class **No change** means that no new technical changes were introduced. Minor editorial and formatting changes may have been made, but the technical content of the document is identical to the last released version.

Major and minor changes can be described further using the following change types:

- New content added.
- Content updated.
- Content removed.
- New product behavior note added.
- Product behavior note updated.
- Product behavior note removed.
- New protocol syntax added.
- Protocol syntax updated.
- Protocol syntax removed.
- New content added due to protocol revision.
- Content updated due to protocol revision.
- Content removed due to protocol revision.
- New protocol syntax added due to protocol revision.
- Protocol syntax updated due to protocol revision.
- Protocol syntax removed due to protocol revision.
- Obsolete document removed.

Editorial changes are always classified with the change type **Editorially updated**.

Some important terms used in the change type descriptions are defined as follows:

- **Protocol syntax** refers to data elements (such as packets, structures, enumerations, and methods) as well as interfaces.
- **Protocol revision** refers to changes made to a protocol that affect the bits that are sent over the wire.

The changes made to this document are listed in the following table. For more information, please contact dochelp@microsoft.com.

Section	Tracking number (if applicable) and description	Major change (Y or N)	Change type
Z Appendix B: Product Behavior	Updated list of supported products.	Y	Content updated due to protocol revision.

Preliminary

9 Index

A

Abstract data model
[server](#) 12
[Applicability](#) 8
[Attribute groups](#) 11
[Attributes](#) 11

C

[Capability negotiation](#) 9
[Change tracking](#) 20
Client
[overview](#) 12
[Common data structures](#) 11
[Complex types](#) 11

D

Data model - abstract
[server](#) 12
Details
[server](#) 12

E

Events
[local - server](#) 14
[timer - server](#) 14
Examples
[IsOnlyClient](#) 15

F

[Fields - vendor-extensible](#) 9
[Full WSDL](#) 17

G

[Glossary](#) 6
[Groups](#) 11

I

[Implementer - security considerations](#) 16
[Index of security parameters](#) 16
[Informative references](#) 8
Initialization

[server](#) 12
[Introduction](#) 6
[IsOnlyClient example](#) 15

L

Local events
[server](#) 14

M

Message processing
[server](#) 12
Messages
[attribute groups](#) 11
[attributes](#) 11
[common data structures](#) 11
[complex types](#) 11
[elements](#) 11
[enumerated](#) 10
[groups](#) 11
[namespaces](#) 10
[simple types](#) 11
[syntax](#) 10
[transport](#) 10

N

[Namespaces](#) 10
[Normative references](#) 7

O

Operations
[IsOnlyClient](#) 12
[Overview \(synopsis\)](#) 8

P

[Parameters - security index](#) 16
[Preconditions](#) 8
[Prerequisites](#) 8
[Product behavior](#) 19
Protocol Details
[overview](#) 12

R

[References](#) 7
[informative](#) 8

[normative](#) 7
[Relationship to other protocols](#) 8

S

Security
[implementer considerations](#) 16
[parameter index](#) 16
Sequencing rules
[server](#) 12
Server
[abstract data model](#) 12
[initialization](#) 12
[IsOnlyClient operation](#) 12
[local events](#) 14
[message processing](#) 12
[overview](#) 12
[sequencing rules](#) 12
[timer events](#) 14
[timers](#) 12
[Server details](#) 12
[Simple types](#) 11
[Standards assignments](#) 9
Syntax
[messages - overview](#) 10

T

Timer events
[server](#) 14
Timers
[server](#) 12
[Tracking changes](#) 20
[Transport](#) 10
Types
[complex](#) 11
[simple](#) 11

V

[Vendor-extensible fields](#) 9
[Versioning](#) 9

W

[WSDL](#) 17