

## [MS-FPSE]:

# FrontPage Server Extensions Remote Protocol

---

### Intellectual Property Rights Notice for Open Specifications Documentation

- **Technical Documentation.** Microsoft publishes Open Specifications documentation for protocols, file formats, languages, standards as well as overviews of the interaction among each of these technologies.
- **Copyrights.** This documentation is covered by Microsoft copyrights. Regardless of any other terms that are contained in the terms of use for the Microsoft website that hosts this documentation, you may make copies of it in order to develop implementations of the technologies described in the Open Specifications and may distribute portions of it in your implementations using these technologies or your documentation as necessary to properly document the implementation. You may also distribute in your implementation, with or without modification, any schema, IDL's, or code samples that are included in the documentation. This permission also applies to any documents that are referenced in the Open Specifications.
- **No Trade Secrets.** Microsoft does not claim any trade secret rights in this documentation.
- **Patents.** Microsoft has patents that may cover your implementations of the technologies described in the Open Specifications. Neither this notice nor Microsoft's delivery of the documentation grants any licenses under those or any other Microsoft patents. However, a given Open Specification may be covered by Microsoft [Open Specification Promise](#) or the [Community Promise](#). If you would prefer a written license, or if the technologies described in the Open Specifications are not covered by the Open Specifications Promise or Community Promise, as applicable, patent licenses are available by contacting [iplg@microsoft.com](mailto:iplg@microsoft.com).
- **Trademarks.** The names of companies and products contained in this documentation may be covered by trademarks or similar intellectual property rights. This notice does not grant any licenses under those rights. For a list of Microsoft trademarks, visit [www.microsoft.com/trademarks](http://www.microsoft.com/trademarks).
- **Fictitious Names.** The example companies, organizations, products, domain names, e-mail addresses, logos, people, places, and events depicted in this documentation are fictitious. No association with any real company, organization, product, domain name, email address, logo, person, place, or event is intended or should be inferred.

**Reservation of Rights.** All other rights are reserved, and this notice does not grant any rights other than specifically described above, whether by implication, estoppel, or otherwise.

**Tools.** The Open Specifications do not require the use of Microsoft programming tools or programming environments in order for you to develop an implementation. If you have access to Microsoft programming tools and environments you are free to take advantage of them. Certain Open Specifications are intended for use in conjunction with publicly available standard specifications and network programming art, and assumes that the reader either is familiar with the aforementioned material or has immediate access to it.

**Preliminary Documentation.** This Open Specification provides documentation for past and current releases and/or for the pre-release version of this technology. This Open Specification is final documentation for past or current releases as specifically noted in the document, as applicable; it is preliminary documentation for the pre-release versions. Microsoft will release final documentation in connection with the commercial release of the updated or new version of this technology. As the documentation may change between this preliminary version and the final version of this technology, there are risks in relying on preliminary documentation. To the extent that you incur additional

development obligations or any other costs as a result of relying on this preliminary documentation, you do so at your own risk.

Preliminary

## Revision Summary

Date	Revision History	Revision Class	Comments
4/10/2007	1.0		Version 1.0 release
5/18/2007	1.2		Version 1.2 release
6/8/2007	1.2.1	Editorial	Revised and edited the technical content.
7/10/2007	2.0	Major	Updated and revised the technical content.
8/17/2007	2.0.1	Editorial	Revised and edited the technical content.
9/21/2007	3.0	Major	Updated and revised the technical content.
10/26/2007	3.0.1	Editorial	Revised and edited the technical content.
1/25/2008	4.0	Major	Updated and revised the technical content.
3/14/2008	5.0	Major	Updated and revised the technical content.
6/20/2008	6.0	Major	Updated and revised the technical content.
7/25/2008	7.0	Major	Updated and revised the technical content.
8/29/2008	7.0.1	Editorial	Revised and edited the technical content.
10/24/2008	7.0.2	Editorial	Revised and edited the technical content.
12/5/2008	7.0.3	Editorial	Revised and edited the technical content.
1/16/2009	7.1	Minor	Updated the technical content.
2/27/2009	7.1.1	Editorial	Revised and edited the technical content.
4/10/2009	8.0	Major	Updated and revised the technical content.
5/22/2009	9.0	Major	Updated and revised the technical content.
7/2/2009	10.0	Major	Updated and revised the technical content.
8/14/2009	10.1	Minor	Updated the technical content.
9/25/2009	10.2	Minor	Updated the technical content.
11/6/2009	10.2.1	Editorial	Revised and edited the technical content.
12/18/2009	10.3	Minor	Updated the technical content.
1/29/2010	10.4	Minor	Updated the technical content.
3/12/2010	10.4.1	Editorial	Revised and edited the technical content.
4/23/2010	10.4.2	Editorial	Revised and edited the technical content.
6/4/2010	10.5	Minor	Updated the technical content.
7/16/2010	11.0	Major	Significantly changed the technical content.
8/27/2010	11.0	No change	No changes to the meaning, language, or formatting of the technical content.
10/8/2010	12.0	Major	Significantly changed the technical content.

<b>Date</b>	<b>Revision History</b>	<b>Revision Class</b>	<b>Comments</b>
11/19/2010	13.0	Major	Significantly changed the technical content.
1/7/2011	13.0	No change	No changes to the meaning, language, or formatting of the technical content.
2/11/2011	13.0	No change	No changes to the meaning, language, or formatting of the technical content.
3/25/2011	13.0	No change	No changes to the meaning, language, or formatting of the technical content.
5/6/2011	13.0	No change	No changes to the meaning, language, or formatting of the technical content.
6/17/2011	13.1	Minor	Clarified the meaning of the technical content.
9/23/2011	14.0	Major	Significantly changed the technical content.
12/16/2011	15.0	Major	Significantly changed the technical content.
3/30/2012	15.0	No change	No changes to the meaning, language, or formatting of the technical content.
7/12/2012	15.1	Minor	Clarified the meaning of the technical content.
9/12/2012	15.1	No Change	No changes to the meaning, language, or formatting of the technical content.
10/8/2012	15.1	No Change	No changes to the meaning, language, or formatting of the technical content.
2/11/2013	15.1	No Change	No changes to the meaning, language, or formatting of the technical content.
7/30/2013	15.2	Minor	Clarified the meaning of the technical content.
11/18/2013	15.2	No Change	No changes to the meaning, language, or formatting of the technical content.
2/10/2014	15.2	No Change	No changes to the meaning, language, or formatting of the technical content.
4/30/2014	15.3	Minor	Clarified the meaning of the technical content.
7/31/2014	15.4	Minor	Clarified the meaning of the technical content.
8/24/2015	16.0	Major	Significantly changed the technical content.

# Table of Contents

<b>1</b>	<b>Introduction .....</b>	<b>8</b>
1.1	Glossary .....	8
1.2	References .....	9
1.2.1	Normative References .....	9
1.2.2	Informative References .....	10
1.3	Overview .....	10
1.4	Relationship to Other Protocols .....	13
1.5	Prerequisites/Preconditions .....	13
1.6	Applicability Statement .....	13
1.7	Versioning and Capability Negotiation .....	13
1.7.1	Protocol Versions .....	13
1.7.2	Capability Negotiation .....	14
1.8	Vendor-Extensible Fields .....	14
1.9	Standards Assignments.....	14
<b>2</b>	<b>Messages.....</b>	<b>15</b>
2.1	Transport .....	15
2.1.1	Client Requests .....	15
2.1.2	Server Responses .....	15
2.2	Message Syntax .....	15
2.2.1	Syntax .....	15
2.2.1.1	Syntax Delimiters .....	15
2.2.1.1.1	URL Mode .....	15
2.2.1.1.2	HTML Mode.....	16
2.2.1.1.3	Nesting Level Dependent Elements .....	16
2.2.1.2	Character Escaping .....	16
2.2.1.2.1	URL Mode .....	16
2.2.1.2.2	HTML Mode.....	17
2.2.2	Data Types .....	17
2.2.2.1	Primitive Data Types .....	17
2.2.2.1.1	UNSIGNED-INT .....	17
2.2.2.1.2	INT .....	17
2.2.2.1.3	BOOLEAN .....	18
2.2.2.1.4	DOUBLE .....	18
2.2.2.1.5	STRING.....	18
2.2.2.1.6	TIME.....	18
2.2.2.2	Complex Data Types .....	18
2.2.2.2.1	Vector.....	18
2.2.2.2.2	Protocol-Version-String .....	19
2.2.2.2.3	URL-String.....	19
2.2.2.2.4	Request-Name-String .....	19
2.2.2.2.5	RPCKEY and RPCVALUE .....	19
2.2.2.2.6	Method-Key-Value .....	20
2.2.2.2.7	Request Syntax .....	20
2.2.2.2.8	Response Syntax .....	20
2.2.2.2.9	Version .....	20
2.2.2.2.10	DICT .....	21
2.2.2.2.11	METADICT .....	21
2.2.2.2.12	DOCINFO .....	22
2.2.2.2.13	Document-List-Return-Type.....	22
2.2.2.2.14	Service-Return-Type .....	22
2.2.2.2.15	DOC-INFO-Request.....	23
2.2.2.2.16	Url-Directory.....	23
2.2.2.2.17	Status.....	23
2.2.2.2.17.1	Error Codes.....	23

2.2.2.2.18	Put-Option.....	25
2.2.2.2.19	Rename-Option.....	27
2.2.2.3	Irrecoverable Error Responses.....	28
2.2.3	Entry Points.....	28
2.2.4	Metadata.....	28
2.2.4.1	Type.....	28
2.2.4.2	Client Access.....	29
2.2.4.3	Applies To.....	29
2.2.4.4	vti_casesensitiveurls.....	29
2.2.4.5	vti_dirlateststamp.....	29
2.2.4.6	vti_filesize.....	30
2.2.4.7	vti_hassubdirs.....	30
2.2.4.8	vti_isbrowsable.....	31
2.2.4.9	vti_ischildweb.....	31
2.2.4.10	vti_isexecutable.....	31
2.2.4.11	vti_isscriptable.....	32
2.2.4.12	vti_longfilenames.....	32
2.2.4.13	vti_metatags.....	33
2.2.4.14	vti_showhiddenpages.....	33
2.2.4.15	vti_sourcecontrolcheckedoutby.....	34
2.2.4.16	vti_sourcecontroltimecheckedout.....	34
2.2.4.17	vti_thicketdir.....	34
2.2.4.18	vti_thicketssupportingfile.....	35
2.2.4.19	vti_timecreated.....	36
2.2.4.20	vti_timelastmodified.....	36
2.2.4.21	vti_timelastwritten.....	36
2.2.4.22	vti_title.....	37
2.2.4.23	vti_username.....	37
2.2.4.24	mf-file-status.....	38
<b>3</b>	<b>Protocol Details.....</b>	<b>39</b>
3.1	Server Details.....	39
3.1.1	Abstract Data Model.....	39
3.1.1.1	Source Control.....	39
3.1.2	Timers.....	40
3.1.2.1	Short-Term Checkout Timer.....	40
3.1.3	Initialization.....	40
3.1.3.1	Determining Server Capabilities.....	40
3.1.3.2	Determining Entry Points.....	40
3.1.3.2.1	Client Request for Entry Point HTML Page.....	40
3.1.3.2.2	Server Entry Point HTML Page Response.....	40
3.1.4	Higher-Layer Triggered Events.....	42
3.1.5	Processing Events and Sequencing Rules.....	42
3.1.5.1	HTTP Headers.....	42
3.1.5.2	Method Formatting.....	42
3.1.5.3	Methods.....	43
3.1.5.3.1	Common Method Arguments.....	43
3.1.5.3.2	checkout document.....	43
3.1.5.3.3	create url-directories.....	44
3.1.5.3.4	create url-directory.....	45
3.1.5.3.5	getDocsMetaInfo.....	45
3.1.5.3.6	get document.....	46
3.1.5.3.7	get documents.....	47
3.1.5.3.8	list documents.....	48
3.1.5.3.9	move document.....	50
3.1.5.3.10	open service.....	52
3.1.5.3.11	put document.....	52
3.1.5.3.12	put documents.....	53

3.1.5.3.13	remove documents .....	55
3.1.5.3.14	server version .....	55
3.1.5.3.15	uncheckout document .....	56
3.1.5.3.16	url to web url .....	56
3.1.5.3.17	SharePoint Team Services .....	57
3.1.5.3.17.1	dialogview .....	57
3.1.6	Timer Events .....	58
3.1.6.1	Short-Term Checkout Timer Expiry .....	58
3.1.7	Other Local Events .....	59
<b>4</b>	<b>Protocol Examples .....</b>	<b>60</b>
4.1	Example Entry Point for FrontPage Server Extensions .....	60
4.1.1	First Determining the Entry Point .....	60
4.1.1.1	First Entry Point Example .....	60
4.1.1.2	Second Entry Point Example .....	60
4.1.2	SharePoint Services Entry Note .....	60
4.2	Example Trace for Posts .....	60
4.2.1	Querying for URLs to Post .....	61
4.2.1.1	Client HTTP GET Request for _vti_inf.html .....	61
4.2.1.2	Server HTTP Response .....	61
4.2.2	Opening a Web Folder .....	62
4.2.2.1	Client Calls server version Method .....	62
4.2.2.2	Server Responds to server version Method .....	62
4.2.2.3	Client Calls list documents Method .....	63
4.2.2.4	Server Responds to list documents Method .....	63
4.2.3	Copying a File to a Web Folder .....	65
4.2.3.1	Client Calls url to web url Method .....	65
4.2.3.2	Server Responds to url to web url Method .....	65
4.2.3.3	Client Calls put document Method .....	66
4.2.3.4	Server Responds to put document Method .....	66
4.2.4	Downloading a File from a Web Folder .....	67
4.2.4.1	Client Calls get document Method .....	67
4.2.4.2	Server Responds to get document Method .....	67
4.2.5	Opening a File in a Web Folder .....	68
4.2.5.1	Client Calls get document Method .....	68
4.2.5.2	Server Responds to get document Method .....	68
4.2.6	Saving a File to a Web Folder .....	69
4.2.6.1	Client Calls put document Method .....	69
4.2.6.2	Server Responds to put document Method .....	69
4.2.7	Closing a File .....	70
4.2.7.1	Calls uncheckout document Method .....	70
4.2.7.2	Server Responds to uncheckout document Method .....	70
<b>5</b>	<b>Security .....</b>	<b>72</b>
5.1	Security Considerations for Implementers .....	72
5.1.1	One-Click Attacks .....	72
5.1.2	Permissions for Entry Points .....	72
5.1.3	Permissions for Objects .....	72
5.2	Index of Security Parameters .....	72
<b>6</b>	<b>Appendix A: Product Behavior .....</b>	<b>73</b>
<b>7</b>	<b>Change Tracking .....</b>	<b>79</b>
<b>8</b>	<b>Index .....</b>	<b>81</b>

# 1 Introduction

The FrontPage Server Extensions Remote Protocol specifies a set of server extensions that can be used to augment a basic HTTP server. These extensions provide file server functionality similar to WebDAV, allowing a website to be presented as a file share. The use of WebDAV is recommended over the FrontPage Server Extensions Remote Protocol. For more information about WebDAV, see [\[MS-WDV\]](#).

The FrontPage Server Extensions Remote Protocol uses HTTP version 1.1 ([\[RFC2616\]](#)) as a transport. Requests are specialized form posts, and responses are in HTML ([\[RFC2854\]](#)). Despite the use of HTTP, the protocol is intended to be used by a client application, not by the user directly through a web browser.

The FrontPage Server Extensions Remote Protocol is a subset of a larger protocol known as FrontPage Server Remote Protocol Extensions. The FrontPage Server Extensions Remote Protocol is a protocol that can be used when communicating between client operating systems and HTTP servers. The larger protocol is used to perform a wider array of website administration tasks. Because implementations of the FrontPage Server Extensions Remote Protocol on some operating systems also implement FrontPage Server Remote Protocol Extensions, be aware that some servers might not ignore arguments and methods noted in this document as messages that a client cannot send.

The Windows SharePoint Services dialogview is an application of the FrontPage Server Extensions Remote Protocol that is addressed in this document because it has certain behaviors apart from the normal FrontPage Server Extensions Remote Protocol communications. The purpose of the dialogview is to allow a client to display a server-rendered HTML-based rendering of the files located on a particular website.

Sections 1.8, 2, and 3 of this specification are normative and can contain the terms MAY, SHOULD, MUST, MUST NOT, and SHOULD NOT as defined in [\[RFC2119\]](#). Sections 1.5 and 1.9 are also normative but do not contain those terms. All other sections and examples in this specification are informative.

## 1.1 Glossary

The following terms are specific to this document:

**dictionary:** A collection of key/value pairs. Each pair consists of a unique key and an associated value. Values in the dictionary are retrieved by providing a key for which the dictionary returns the associated value.

**document library:** A type of list that is a container for documents and folders.

**domain name:** The name given by an administrator to a collection of networked computers that share a common directory. Part of the domain naming service naming structure, domain names consist of a sequence of name labels separated by periods.

**folder:** A file system construct. File systems organize a volume's data by providing a hierarchy of objects, which are referred to as folders or directories, that contain files and can also contain other folders.

**Hypertext Transfer Protocol (HTTP):** An application-level protocol for distributed, collaborative, hypermedia information systems (text, graphic images, sound, video, and other multimedia files) on the World Wide Web.

**Hypertext Transfer Protocol Secure (HTTPS):** An extension of HTTP that securely encrypts and decrypts web page requests. In some older protocols, "Hypertext Transfer Protocol over Secure Sockets Layer" is still used (Secure Sockets Layer has been deprecated). For more information, see [\[SSL3\]](#) and [\[RFC5246\]](#).



**link fixup:** A process that helps to ensure consistent paths to linked components.

**metakey:** A string in a metadict that is mapped to a strongly-typed value.

**page:** A file that consists of HTML and can include references to graphics, scripts, or dynamic content such as Web Parts.

**server-relative URL:** A relative URL that does not specify a scheme or host, and assumes a base URI of the root of the host, as described in [\[RFC3986\]](#).

**subsite:** A complete website that is stored in a named subdirectory of another website. The parent website can be the top-level site of a site collection or another subsite. Also referred to as subweb.

**thicket:** A means of storing a complex HTML document with its related files. It consists of a thicket main file and a hidden thicket folder that contains a thicket manifest and a set of thicket supporting files that, together, store the referenced content of the document.

**Unicode:** A character encoding standard developed by the Unicode Consortium that represents almost all of the written languages of the world. The **Unicode** standard [\[UNICODE5.0.0/2007\]](#) provides three forms (UTF-8, UTF-16, and UTF-32) and seven schemes (UTF-8, UTF-16, UTF-16 BE, UTF-16 LE, UTF-32, UTF-32 LE, and UTF-32 BE).

**Uniform Resource Locator (URL):** A string of characters in a standardized format that identifies a document or resource on the World Wide Web. The format is as specified in [\[RFC1738\]](#).

**MAY, SHOULD, MUST, SHOULD NOT, MUST NOT:** These terms (in all caps) are used as defined in [\[RFC2119\]](#). All statements of optional behavior use either MAY, SHOULD, or SHOULD NOT.

## 1.2 References

Links to a document in the Microsoft Open Specifications library point to the correct section in the most recently published version of the referenced document. However, because individual documents in the library are not updated at the same time, the section numbers in the documents may not match. You can confirm the correct section numbering by checking the [Errata](#).

### 1.2.1 Normative References

We conduct frequent surveys of the normative references to assure their continued availability. If you have any issue with finding a normative reference, please contact [dochelp@microsoft.com](mailto:dochelp@microsoft.com). We will assist you in finding the relevant information.

[IEEE754] IEEE, "IEEE Standard for Binary Floating-Point Arithmetic", IEEE 754-1985, October 1985, <http://ieeexplore.ieee.org/servlet/opac?punumber=2355>

[MS-WDVSE] Microsoft Corporation, "[Web Distributed Authoring and Versioning \(WebDAV\) Protocol: Server Extensions](#)".

[MS-WDV] Microsoft Corporation, "[Web Distributed Authoring and Versioning \(WebDAV\) Protocol: Client Extensions](#)".

[RFC1341] Borenstein, N., and Freed, N., "MIME (Multipurpose Internet Mail Extensions): Mechanisms for Specifying and Describing the Format of Internet Message Bodies", RFC 1341, June 1992, <http://www.rfc-editor.org/rfc/rfc1341.txt>

[RFC1866] Berners-Lee, T., and Connolly, D., "Hypertext Markup Language - 2.0", RFC 1866, November 1995, <http://www.ietf.org/rfc/rfc1866.txt>

[RFC2119] Bradner, S., "Key words for use in RFCs to Indicate Requirement Levels", BCP 14, RFC 2119, March 1997, <http://www.rfc-editor.org/rfc/rfc2119.txt>

[RFC2279] Yergeau, F., "UTF-8, a transformation format of ISO 10646", RFC 2279, January 1998, <http://www.rfc-editor.org/rfc/rfc2279.txt>

[RFC2616] Fielding, R., Gettys, J., Mogul, J., et al., "Hypertext Transfer Protocol -- HTTP/1.1", RFC 2616, June 1999, <http://www.rfc-editor.org/rfc/rfc2616.txt>

[RFC2822] Resnick, P., Ed., "Internet Message Format", RFC 2822, April 2001, <http://www.ietf.org/rfc/rfc2822.txt>

[RFC2854] Connolly, D. and Masinter, L., "The 'text/html' Media Type", RFC 2854, June 2000, <http://www.ietf.org/rfc/rfc2854.txt>

[RFC3986] Berners-Lee, T., Fielding, R., and Masinter, L., "Uniform Resource Identifier (URI): Generic Syntax", STD 66, RFC 3986, January 2005, <http://www.ietf.org/rfc/rfc3986.txt>

[RFC4234] Crocker, D., Ed., and Overell, P., "Augmented BNF for Syntax Specifications: ABNF", RFC 4234, October 2005, <http://www.rfc-editor.org/rfc/rfc4234.txt>

### 1.2.2 Informative References

None.

### 1.3 Overview

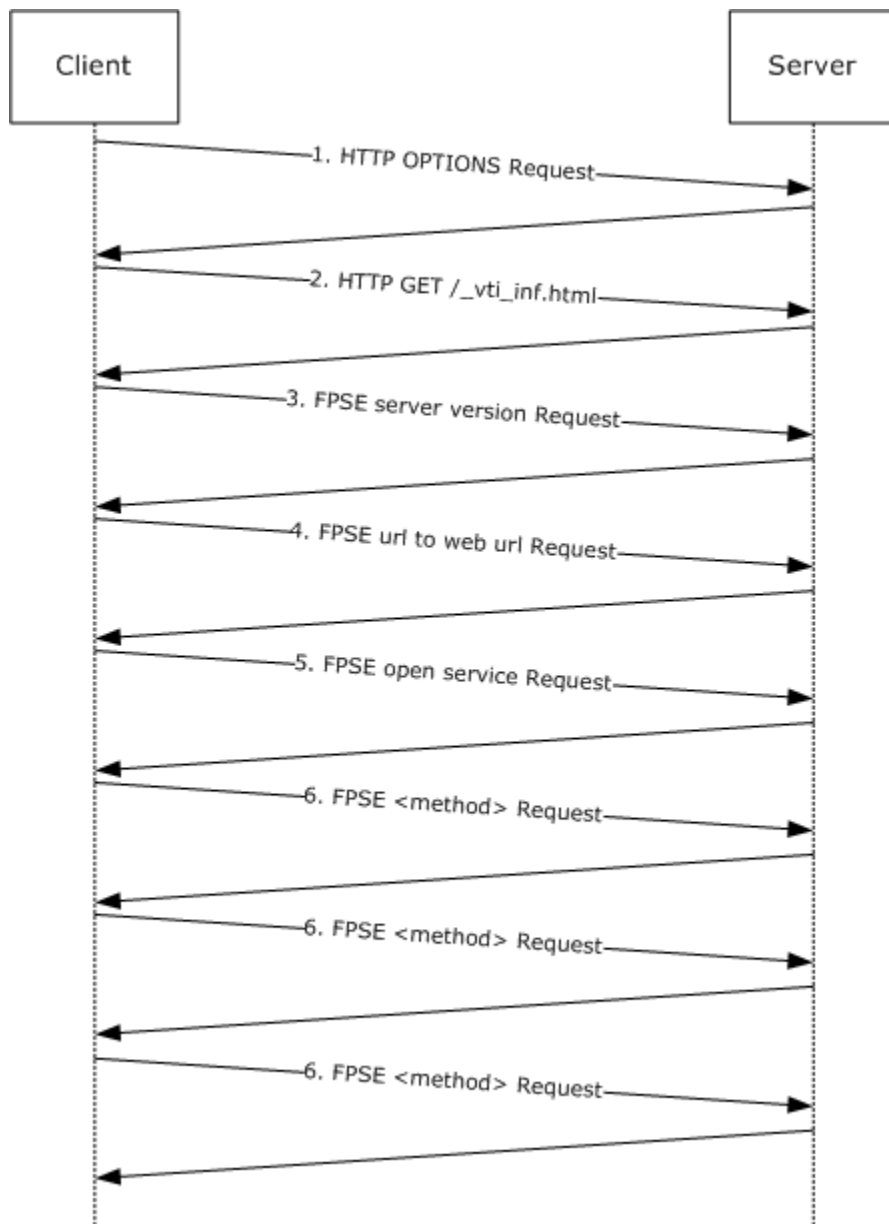
The FrontPage Server Extensions Remote Protocol is used by client applications to display the contents of a site as a file system. The FrontPage Server Extensions Remote Protocol provides file uploading and downloading, directory creation and listing, basic file locking, and file movement on a web server by using a set of methods.

Each message from the client is in the form of an **HTTP** POST or GET ([\[RFC2616\]](#) sections 9.5 and 9.3) that includes a set of parameters, and each reply from the server returns a set of values as an HTML response ([\[RFC2854\]](#)). The method parameter defines what operation the server will perform in addition to the meanings of the other parameters and return values.

The client sends method call requests to the server, and the server sends return values to the client via HTML. The server never initiates any communication with the client. All communication is transported over HTTP or secure HTTP (**HTTPS**), as described in [\[RFC2616\]](#) section 9.1. Method calls are sent as HTTP POSTs, [\[RFC2616\]](#) section 4.2, with the method name and arguments as the message entity, and server responses are sent as a list in the message body, [\[RFC2616\]](#) section 4.2, of an HTTP response. All posts are made to one of several well-defined **URLs** on the server, which can be discovered by clients.

A protocol client initiates its communication with the server by requesting well-defined URLs for further communication, as specified in section [3.1.3.2.1](#), and determining the version of the server as specified in section [1.7.1](#). This protocol specifies no additional requirements on the HTTP protocol layer as described in [\[RFC2616\]](#) for maintaining state across request/responses. See [\[RFC2616\]](#) section 4.4 for more information about the determination of message length, and [\[RFC2616\]](#) section 8 for information about layering HTTP on top of the TCP protocol.

The following sequence diagram depicts a generic FrontPage Server Extensions conversation. A brief explanation of each message follows, and details are defined in sections [2](#) and [3](#).



**Figure 1: A generic Microsoft FrontPage Server Extension message sequence**

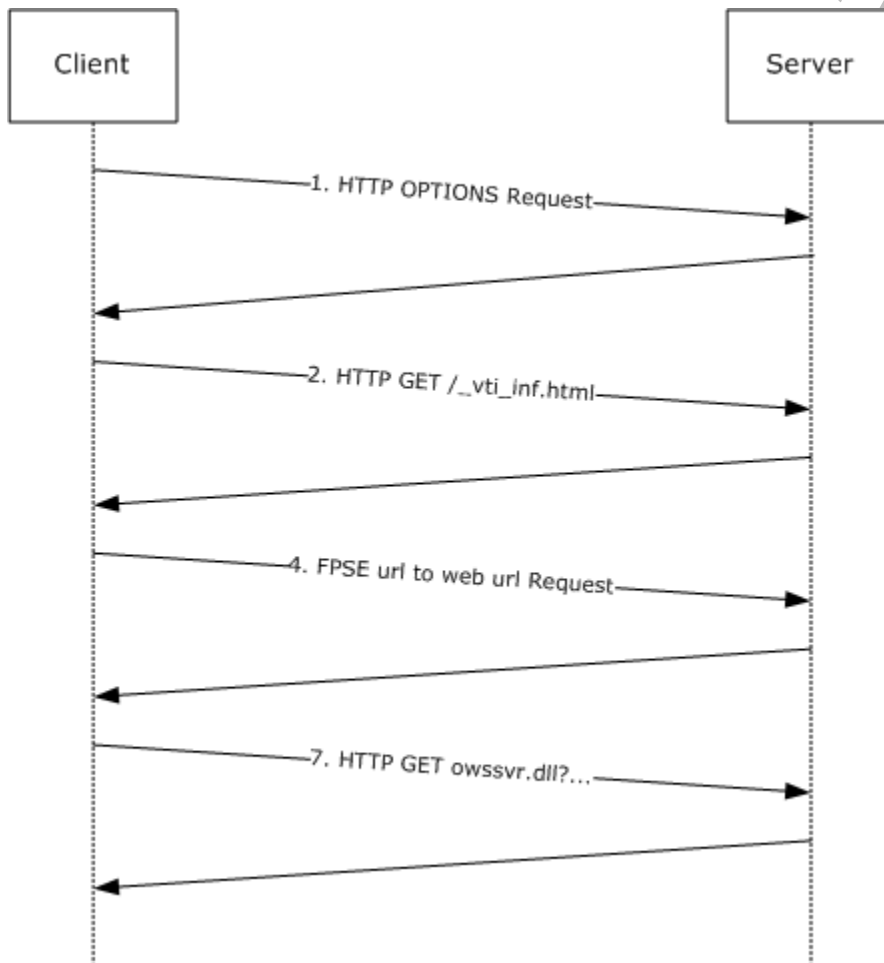
1. The HTTP OPTIONS request is sent to determine if the server supports the FrontPage Server Extensions Remote Protocol. If the response contains the MS-Author-Via header, as specified in section [3.1.3.1](#), the server supports the protocol. This value is often cached by clients.
2. The HTTP GET on `_vti_inf.html` will return information specifying the well-defined URLs to which the client can POST further method calls.
3. At this point, the client is prepared to start making method calls against the server. The first call is a **server version** request (see section [3.1.5.3.14](#)) whereby the client negotiates a protocol version with the server.
4. The client can then call the **url to web url** (see section [3.1.5.3.16](#)) if the site is a **subsite**, that is, one not located at the root of the server's namespace.

5. Next, the client can make an **open service** request (see section [3.1.5.3.10](#)) on the site that it wants to open. This request is optional, but it will return information about the site's capabilities, such as support for version control.
6. The client can make any method calls against the server. The nature of any further client/server communication is determined by the specific needs of the client at the time.

To give an example of how the protocol is used in Windows, a user might type an HTTP URL into the address bar of a file browser. The file browser contacts the server to determine if it supports the FrontPage Server Extensions Remote Protocol. If so, the file browser uses the FrontPage Server Extensions Remote Protocol to list the contents of the directory that the user entered and to display the contents just as it would display files on the local hard disk.

The Windows SharePoint Services **dialogview** aspect of the FrontPage Server Extensions Remote Protocol is designed to allow a client to ask the server to provide an HTML rendering of its file structure. The client can then display this HTML rendering and navigate through it.

When using Windows SharePoint Services **dialogview** (see section [3.1.5.3.17.1](#)), the sequence of messages is similar to that shown in the following figure. For a brief explanation of each message, see sections 2 and 3.



**Figure 2: Windows SharePoint Services dialogview message sequence**

The first three messages are used identically to those shown in the first figure in this section. The final HTTP GET returns the HTML that the client can use to display the site's file system. This GET is performed against a specific, well-known URL on the server (see section [3.1.3.2](#)).

## 1.4 Relationship to Other Protocols

The FrontPage Server Extensions Remote Protocol is transported via HTTP version 1.1 GETs, POSTs and responses, as described in [\[RFC2616\]](#) sections 9.3, 9.5, and 6.

The **dialogview** (section [3.1.5.3.17.1](#)) relies on the FrontPage Server Extensions Remote Protocol to discover the name and location of the Microsoft Office Web Services Server executable by using the information returned in `_vti_inf.html`. Windows extensions to WebDAV use its error codes, as described in [\[MS-WDV\]](#).

## 1.5 Prerequisites/Preconditions

The client needs to know the URL of the server it wants to communicate with, which is usually passed by the user as the prompt for beginning the FrontPage Server Extensions Remote Protocol conversation. If required by the server, the client authenticates using the underlying HTTP mechanisms, as specified in [\[RFC2616\]](#) section 14.8.

## 1.6 Applicability Statement

The FrontPage Server Extensions Remote Protocol is a precursor to the WebDAV protocol and can be used in similar situations. Because it is an earlier technology, most developers will find WebDAV, as described in [\[MS-WDV\]](#), a more appealing option.

The dialogview aspect of the protocol, as specified in section [3.1.5.3.17.1](#), can be used by a client application to allow the server to control the appearance of a file store to a user. For example, if the server has richer metadata semantics than the typical client can display or uses a nonstandard file and folder hierarchy, this view can be used to offload rendering of the file navigation to the server.

## 1.7 Versioning and Capability Negotiation

### 1.7.1 Protocol Versions

Version negotiation is performed by using the server version method (see section [3.1.5.3.14](#)). The client sends its own protocol version in the method name section of the request. The server compares that to the server protocol version and replies to the client. The protocol version the server uses is given in the response header in the form of (Min(ServerVersion, ClientVersion)). The client is expected to use this version for any remaining communications. If the version of the client or server is not supported, the one with the newer protocol version discontinues the conversation.

The structure of a FrontPage Server Extensions Remote Protocol version (see section [2.2.2.2.9](#)), as defined, has four parts: a major version, minor version, phase number, and build number. Thus, a version might look like 1.0.0.3214. Versions grow over time, so 3.0 is considered earlier, or older, than 4.0. To compare versions, begin with the major version, then the minor version, then the phase number, and then the build number to see which one is the latest version.

In the FrontPage Server Extensions Remote Protocol, the client, server, and protocol each have their own version, although all of them follow the same format. The client and server version are used in the negotiation to determine the protocol version. For details, see section [3.1.5.3.14](#).

All servers reject any client with a version that is earlier than 4.0.2.2611, and clients reject any server with a version that is earlier than 3.0.2.1002. The server returns the error code (0x0004000C) if an

incompatible client is encountered. If the version of the server is not supported, the client simply ignores the server, and no further communication with the server is attempted.

The FrontPage Server Extensions Remote Protocol components were shipped as part of Windows and as separate web downloads. Only the major and minor version numbers are listed. Except as noted previously, any numbers that meet the requirements (see section 2.2.2.2.9) can be used for the phase and build numbers.

For the remainder of this document, the protocol version will be referred to instead of the Windows version to describe support for protocol functionality.

### **1.7.2 Capability Negotiation**

The FrontPage Server Extensions clients and servers perform capability negotiation because some operations are only supported by newer servers. This negotiation is performed by using the site metadata that is returned in the server version method, as described in section [3.1.5.3.14](#). The metadata contains a set of keys and values. Clients can determine server capabilities by looking for certain keys in the metadata. Information regarding **metakeys** that denote specific behaviors the server does or does not support are detailed in section [2](#).

### **1.8 Vendor-Extensible Fields**

None.

### **1.9 Standards Assignments**

The FrontPage Server Extensions Remote Protocol does not use any standards assignments other than those of HTTP 1.1, as specified in [\[RFC2616\]](#).

## 2 Messages

The following sections specify the message transport, message syntax, data types, and messages that are used in the FrontPage Server Extensions Remote Protocol.

### 2.1 Transport

The FrontPage Server Extensions Remote Protocol uses HTTP version 1.1, as specified in [\[RFC2616\]](#), as transport for the GET and POST methods.

#### 2.1.1 Client Requests

Client requests to the server MUST be transmitted as **POST** or **GET** methods appended to a URL, hereafter referred to as the URL Mode. For details about the syntax, see section [2.2.1](#).

If the client request does not conform to the message definitions that follow, the server MUST return an error to the client and stop parsing the request. See section [3.1.5.2](#) for details on the form of server error responses. See section [2.2.2.3](#) for details regarding irrecoverable error responses.

#### 2.1.2 Server Responses

Server responses to client requests MUST be transmitted as HTML ([\[RFC2854\]](#)) and are hereafter referred to as HTML Mode. Exceptions are if the server responses are otherwise specified. For details about the syntax, see section [2.2.1](#).

If the server response does not conform to the message definitions that follow, the client MUST ignore the server response and stop communication with the server.

## 2.2 Message Syntax

This section specifies the FrontPage Server Extensions syntax and the data types that are used when a client posts FrontPage Server Extensions Remote Protocol requests to a server. It also specifies the syntax that is used by the server to respond to client requests. The syntax and data types are defined using Augmented Backus-Naur Form (ABNF), as specified in [\[RFC4234\]](#).

### 2.2.1 Syntax

The FrontPage Server Extensions Remote Protocol is used in **URL Mode** (section [2.2.1.1.1](#)) and **HTML Mode** (section [2.2.1.1.2](#)) in client request and server responses, respectively. These two modes differ with respect to encoding rules and the values of certain tokens in the stream. Implementations MUST use the following syntax rules that define these encoding schemes.

All FrontPage Server Extensions Remote Protocol communications are case-sensitive. The reader needs to assume that all strings are case-sensitive unless otherwise noted.

#### 2.2.1.1 Syntax Delimiters

The following two sections specify primitives that are used as punctuation within strings in the full syntax for both **URL Mode** (section [2.2.1.1.1](#)) and **HTML Mode** (section [2.2.1.1.2](#)), respectively. They are defined for both URL Mode and HTML Mode, so that in the remainder of the document a single definition can be given for higher-level constructs.

##### 2.2.1.1.1 URL Mode

The listed primitives are used as punctuation within a string in **URL Mode**.

```
PARGSEP = "&"
SARGSEP = ";"
VALSEP = "="
LISTSEP = ";"
OBRACKET = "["
CBRACKET = "]"
STARTLIST = ""
```

### 2.2.1.1.2 HTML Mode

The listed primitives are used as punctuation within a string in **HTML Mode**.

```
PARGSEP = LF "<p>"
SARGSEP = LF "<li>"
VALSEP = "="
LISTSEP = LF "<li>"
OBRACKET = LF "<ul>"
CBRACKET = LF "</ul>"
STARTLIST = LF "<li>"
```

### 2.2.1.1.3 Nesting Level Dependent Elements

An implementation of the FrontPage Server Extensions Remote Protocol **MUST** keep track of the number of times an OBRACKET is sent minus the number of times a CBRACKET is sent in the current request. Hereafter, the value will be referred to as the nesting level. This value affects which delimiters **MUST** be used.

If the nesting level is zero:

```
ARGSEP = PARGSEP
```

Otherwise, if the nesting level is not zero,

```
ARGSEP = SARGSEP
```

### 2.2.1.2 Character Escaping

The FrontPage Server Extensions Remote Protocol uses UTF-8, as specified in [\[RFC2279\]](#), as its character encoding. In every instance that follows in this document in which a string is referred to as a literal, it can be assumed that the character is UTF-8 encoded. Depending on the mode, **URL Mode** (section [2.2.1.1.1](#)) or **HTML Mode** (section [2.2.1.1.2](#)), various character escaping is used, as shown in the following two sections.

#### 2.2.1.2.1 URL Mode

In **URL Mode**, characters are escaped as follows.

```
ESCAPED-BYTE = ALPHA / DIGIT ; literal meaning
/ "+" ; encoded space
/ "%5c%5c" ; encoded backslash
/ "%5c%3d" ; encoded equal sign
/ "%5c%5b" ; encoded open bracket
/ "%5c%5d" ; encoded close bracket
/ "%5c%3b" ; encoded semicolon
```



```
/ "%5c%22" ; encoded double quote
/ "%" 2HEXDIG ; anything not mentioned above
```

A sender SHOULD encode in this order (for example, a space needs to be encoded as "+" rather than "%20"; an A needs to be encoded as "A" rather than "%41"). A receiver MUST decode "%" 2HEXDIG and + to a space. A "%5c" sequence MUST be ignored except:

- If it is followed by another "%5c" sequence, in which case it MUST be treated as a backslash.
- If it is followed by "%3d", "%5b", "%5d", "%3b", or "%22" the "%5c" is ignored, but the character that comes after MUST NOT be treated as a delimiter.

### 2.2.1.2.2 HTML Mode

In **HTML Mode**, characters are escaped as follows:

```
ESCAPED-BYTE =
  %d32-33 / %d35-58 / %d63-91 ; literal meaning
  / %d93-122 / %d124 / %d126-127 ; literal meaning
  / "\t" ; encoded tab (%d8)
  / "\b" ; encoded backspace (%d9)
  / "\n" ; encoded newline (%d10)
  / "\f" ; encoded formfeed (%d12)
  / "\r" ; encoded carriage return (%d13)
  / "&#" 2DIGIT ";" ; encoded non-printing characters that are not
    specially handled (%d0-7 / %d11 / %d14-31) or
    special printing characters (%d34 / %d59-62 / %d92)
  / "&#" 3DIGIT ";" ; special printing characters (%d123 / %d125) or
    non-printing 3 digit characters (%d128-255)
```

That is, send "\t" (third expansion) rather than "&#08;" (eighth expansion), and send "&#60;" (eighth expansion) rather than "&#060;" (ninth expansion). However, a receiver MUST accept any of these forms.

## 2.2.2 Data Types

This section describes the data types that are used when the client posts FrontPage Server Extensions Remote Protocol requests to the server, and the server responds to the client.

### 2.2.2.1 Primitive Data Types

This section specifies the primitive data types that are used in the FrontPage Server Extensions Remote Protocol, using ABNF as specified in [\[RFC4234\]](#).

#### 2.2.2.1.1 UNSIGNED-INT

The **UNSIGNED-INT** data type is an unsigned decimal integer that can be represented in 32 bits.

```
UNSIGNED-INT = 1*DIGIT ; default value = "0"
```

#### 2.2.2.1.2 INT

The **INT** data type is a signed decimal integer that can be represented in 32 bits.

```
INT = [ "-" ] UNSIGNED-INT
```

### 2.2.2.1.3 BOOLEAN

The **BOOLEAN** data type represents a value that can be true or false.

```
TRUE = "true" / "TRUE"  
FALSE = "false" / "FALSE"  
BOOLEAN = TRUE / FALSE ; default value = FALSE
```

The client **MUST** send **BOOLEAN** values in lower case.

### 2.2.2.1.4 DOUBLE

The **DOUBLE** data type is a signed floating point number that can be represented in 64 bits, as specified in [\[IEEE754\]](#).

```
DOUBLE = INT [ "." UNSIGNED-INT ] / [ "-" ] "." UNSIGNED-INT
```

### 2.2.2.1.5 STRING

The **STRING** data type is an encoded text string of arbitrary length.

```
STRING = *ESCAPED-BYTE
```

**Note** **STRING** represents a **Unicode** string with each **BYTE** corresponding to a byte in a UTF-8 sequence. For example, the "æ" character (a combined "ae") is "U+00e6", which has a UTF-8 representation of ".". Thus, the string "Cæsar" can be represented as "C%c3%a6sar" in URL Mode and as "C&#195;&#166;sar" in HTML Mode.

### 2.2.2.1.6 TIME

The **TIME** data type is a string containing a date and time.

```
TIME = STRING
```

**Note** **TIME** values **MUST** conform to the format specified in [\[RFC2822\]](#) section 3.3.

## 2.2.2.2 Complex Data Types

This section specifies the complex data types that are used in method requests and responses. These values, in addition to the primitive data types, will be used throughout section [3.1.5.3](#) to define the data types for arguments and return values.

### 2.2.2.2.1 Vector

A **vector** is a typed array of elements whose default value is empty.

```
VECTOR-UNSIGNED-INT = OBRACKET STARTLIST UNSIGNED-INT *(LISTSEP UNSIGNED-INT) CBRACKET  
VECTOR-INT = OBRACKET STARTLIST INT *(LISTSEP INT) CBRACKET  
VECTOR-BOOLEAN = OBRACKET STARTLIST BOOLEAN *(LISTSEP BOOLEAN) CBRACKET
```

```
VECTOR-DOUBLE = OBRACKET STARTLIST DOUBLE *(LISTSEP DOUBLE) CBRACKET
VECTOR-STRING = OBRACKET STARTLIST STRING *(LISTSEP STRING) CBRACKET
VECTOR-TIME = OBRACKET STARTLIST TIME *(LISTSEP TIME) CBRACKET

VECTOR-X = OBRACKET STARTLIST X *(LISTSEP X) CBRACKET
```

All data types can have a **vector** type associated with them where X, as in the preceding example, represents the **vector** data type. For example, VECTOR-STRING = OBRACKET STARTLIST STRING \*(LISTSEP STRING) CBRACKET. X can be a simple type, such as STRING, or a complex type, such as DOCINFO.

#### 2.2.2.2.2 Protocol-Version-String

A **PROTOCOL-VERSION-STRING** is an identifier for a specific protocol version, used for version negotiation between clients and servers.

```
PROTOCOL-VERSION-STRING = UNSIGNED-INT "." UNSIGNED-INT "."
    UNSIGNED-INT "." UNSIGNED-INT
```

#### 2.2.2.2.3 URL-String

A **URL-STRING** is a URL in the form of a URI-reference, as specified in [\[RFC3986\]](#).

```
URL-STRING = URI-reference
VECTOR-URL-STRING = OBRACKET STARTLIST URL-STRING *(LISTSEP URL-STRING) CBRACKET
```

The **URL-STRING** can be further qualified as server-relative or service-relative for specific uses.

#### 2.2.2.2.4 Request-Name-String

A **REQUEST-NAME-STRING** is an identifier for a method.

```
REQUEST-NAME-STRING = STRING
```

The **REQUEST-NAME-STRING** MUST be an encoded string containing one of the method name values defined in section [3.1.5.3](#).

#### 2.2.2.2.5 RPCKEY and RPCVALUE

An **RPCKEY** and **RPCVALUE** pair are used to specify methods, parameters, and results.

```
RPCKEY-KEY-STRING = STRING
RPCKEY = [ARGSEP] RPCKEY-KEY-STRING VALSEP
```

The leading ARGSEP MUST be present in an **RPCKEY** in HTML mode. The leading ARGSEP MUST be present in an **RPCKEY** in URL Mode except when the **RPCKEY** is the first key after an OBRACKET or at the start of a response, in which case the leading ARGSEP MUST NOT be present.

```
RPCVALUE = UNSIGNED-INT / INT / BOOLEAN / DOUBLE / STRING
    / TIME / VERSION / URL-STRING
```

```
/ METHOD-VALUE / DICT / METADICT / DOCINFO
/ DOCUMENT-LIST-RETURN-TYPE / SERVICE-RETURN-TYPE
/ DOC-INFO-REQUEST / URL-DIRECTORY / STATUS
/ PUT-OPTION / RENAME-OPTION
/ VECTOR-UNSIGNED-INT / VECTOR-INT
/ VECTOR-BOOLEAN / VECTOR-DOUBLE / VECTOR-STRING
/ VECTOR-URL-STRING / VECTOR-URL-DIRECTORY
/ VECTOR-DOCINFO / VECTOR-METADICT
/ VECTOR-X
```

#### 2.2.2.2.6 Method-Key-Value

The **METHOD-KEY-VALUE** is an **RPCKEY RPCVALUE** pair that specifies the method used by the server.

```
METHOD-KEY = RPCKEY
METHOD-VALUE = REQUEST-NAME-STRING [":" PROTOCOL-VERSION-STRING]
METHOD-KEY-VALUE = METHOD-KEY METHOD-VALUE
```

The **RPC-KEY-STRING** in the **RPCKEY** of a **METHOD-KEY** MUST be "method".

#### 2.2.2.2.7 Request Syntax

This section specifies the syntax for a FrontPage Server Extensions Remote Protocol request. A **REQUEST** consists of a method identifier, which can be followed by parameter names with arguments. For details about which arguments are sent for each method, refer to section [3.1.5.3](#).

```
REQUEST = METHOD-KEY-VALUE *(ARG-NAME ARG-VALUE) LF
```

The parameter names and arguments for the request are the set of **ARG-NAME ARG-VALUE** elements that appear after the **METHOD-KEY-VALUE**.

```
ARG-NAME = RPCKEY
ARG-VALUE = RPCVALUE
```

#### 2.2.2.2.8 Response Syntax

This section specifies the syntax for a FrontPage Server Extensions Remote Protocol response. The specifics of which return values are sent for each method are as specified in section [3.1.5.3](#).

```
RESPONSE = "<html><head><title>vermeer RPC packet</title></head>" LF
"<body>" METHOD-KEY-VALUE *(RET-NAME RET-VALUE) "</body>" LF "</html>"
LF
```

The return values are the set of **RET-NAME RET-VALUE** elements that appear after the **REQUEST-NAME-STRING**.

```
RET-NAME = RPCKEY
RET-VALUE = RPCVALUE
```

#### 2.2.2.2.9 Version

This data type is used to communicate a version number. The default value is "0.0.0.0".

```
VERSION = OBRACKET "major ver" VALSEP INT ARGSEP "minor ver" VALSEP  
INT ARGSEP "phase ver" VALSEP INT ARGSEP "ver incr" VALSEP INT  
CBRACKET
```

Major and minor versions are 1.0, 1.1, 2.0, 3.0, 4.0, 5.0, 6.0, and 12.0. In phase version, the values are 0, 1, 2, or 3. The number 0 represents an alpha release or earlier; 1 represents a beta release; 2 represents an official release; 3 represents an updated version increment that is used to differentiate, for example, SP1 from SP2, or internal builds before release.

**Note** Version numbers are ordered numerically, not lexicographically. For example, 12.9 is earlier than 12.10.

#### 2.2.2.2.10 DICT

The FrontPage Server Extensions Remote Protocol form of a **dictionary** is a **DICT**.

```
KEY-STRING = STRING ;
```

The key that is used to look up the value is as follows:

```
VALUE-STRING = STRING ;
```

The value that is found with the key is as follows:

```
DICT = OBRACKET [STARTLIST KEY-STRING LISTSEP VALUE-STRING *(LISTSEP  
KEY-STRING LISTSEP VALUE-STRING)] CBRACKET ; default value = empty
```

#### 2.2.2.2.11 METADICT

A **METADICT** is a **DICT** structure used to store a metadictionary of metadata associated with files, directories, and services. For a **METADICT**, the VALUE-STRING, when decoded, MUST be in a special form specified as a **METADICT-VALUE**.

```
METADICT-VALUE = "T" METADICT-CONSTRAINT-CHAR "|" TIME  
/ "V" METADICT-CONSTRAINT-CHAR "|" METADICT-STRING-VECTOR  
/ "B" METADICT-CONSTRAINT-CHAR "|" BOOLEAN  
/ "I" METADICT-CONSTRAINT-CHAR "|" INT  
/ "U" METADICT-CONSTRAINT-CHAR "|" METADICT-INT-VECTOR  
/ "D" METADICT-CONSTRAINT-CHAR "|" DOUBLE  
/ "S" METADICT-CONSTRAINT-CHAR "|" STRING
```

The **METADICT-CONSTRAINT-CHAR** is no longer significant but is still present for backward compatibility with existing metadata. It can be considered a hint for the client to adopt the following behavior.

```
X: The client MUST ignore the value.  
R: The client MAY read the value but MUST NOT write the value.  
W: The client MAY read or write the value.
```

Constraints on modification of metadata are now the responsibility of the server and are described in section [2.2.4](#).

```
METADICT-INT-VECTOR = "" / INT *(SP INT)
METADICT-STRING-VECTOR = "" / METADICT-STRING-ITEM *(SP METADICT-STRING-ITEM)
METADICT-STRING-ITEM = *METADICT-STRING-ITEM-CHAR
METADICT-STRING-ITEM-CHAR = %x1-1F / %x21-5b / %x5d-ff ; unescaped
/ %x5c SP; escaped space
/ %x5c %x5c; escaped backslash
```

#### 2.2.2.2.12 DOCINFO

The **DOCINFO** contains a document name and its metadata.

```
DOCINFO = OBRACKET ARGSEP "document_name" VALSEP URL-STRING ARGSEP "meta_info" VALSEP
METADICT CBRACKET
VECTOR-DOCINFO = OBRACKET 1*DOCINFO CBRACKET
```

A **DOCINFO** assumes that the URL specified by the *document\_name* parameter is service-relative.

Example (encoded as sent over the wire):

```
%5bdocument%5fname%3dfolder1%2ffolder2%2fsmall%2etxt%3bmeta%5finfo%3d
%5bvti%5ftimelastmodified%3bSW%7c08+June+2006+21%3a40%3a07+%2d0000%5d
%5d
```

Example (decoded for readability):

```
&document=
[document_name=folder1/folder2/small.txt;
meta_info=[vti_modifiedby;SW|user_name;
vti_author;SW|user_name]]
```

#### 2.2.2.2.13 Document-List-Return-Type

The **Document-List-Return-Type** is used by the server to return a list of documents and their metadata.

```
DOCUMENT-LIST-RETURN-TYPE = OBRACKET *(OBRACKET "document_name" VALSEP
URL-STRING ARGSEP "meta_info" VALSEP METADICT CBRACKET) CBRACKET
```

#### 2.2.2.2.14 Service-Return-Type

The **Service-Return-Type** is used to return information about a site.

```
SERVER-RELATIVE-URL-STRING = URL-STRING
```

The URL **MUST** be server-relative.

```
SERVICE-RETURN-TYPE = OBRACKET "service_name" VALSEP
```

```
SERVER-RELATIVE-URL-STRING ARGSEP "meta_info" VALSEP METADICT CBRACKET
```

### 2.2.2.2.15 DOC-INFO-Request

The **DOC-INFO-Request** is used to return information about a document name and its metadata.

```
DOC-INFO-REQUEST = ARG-NAME DOCINFO
```

The **RPC-KEY-STRING** in **ARG-NAME** MUST be "document".

### 2.2.2.2.16 Url-Directory

The **Url-directory** provides the name and metadata associated with a given URL.

```
URL-DIRECTORY = OBRACKET "url" VALSEP URL-STRING ARGSEP "meta_info"
VALSEP METADICT CBRACKET
VECTOR-URL-DIRECTORY = OBRACKET STARTLIST URL-DIRECTORY *(LISTSEP URL-DIRECTORY) CBRACKET
```

### 2.2.2.2.17 Status

The **STATUS-CODE** data type is used to send back a status error code.

```
STATUS-CODE = UNSIGNED-INT
STATUS = OBRACKET "status" VALSEP STATUS-CODE ARGSEP "osstatus" VALSEP
STATUS-CODE ARGSEP "msg" VALSEP STRING ARGSEP "osmsg" VALSEP STRING
CBRACKET
```

#### 2.2.2.2.17.1 Error Codes

This section specifies a selection of common errors that might require client action, and gives details of the client responses that are suggested. The server expects no specific responses from the client in reply to any specific error; however, there are no restrictions on the protocol server as to which errors can be generated at what time, or on the total set of errors which can be used. Therefore, the client is required to be prepared to handle any errors that are generated. If the client encounters an error it does not recognize or cannot interpret, preferably the client can handle this by outputting the error string (message) to the user. All errors from the server are paired with message strings.

Errors from the following table which are generated by few specific methods, or which suggest client action only in specific cases, will be referenced again in the Methods section of the document ([3.1.5.3](#)), as notes associated with the method that generates each error.

Error code	Message
0x0002000C	Write error on file 'value'. This error can be generated in any case in which the protocol server fails to write a file. Clients can provide users with the option to retry the operation or to retry with alternate choices in the case that a file cannot be written. If the file in question was being written to the client computer or to a path of the user's choosing, the client can present the user with a more specific response. <1>
0x00020019	Cannot rename 'value' to 'value': destination already exists. This error can be generated in response to any attempt by the server to rename an object

Error code	Message
	<p>when an object with the chosen name already exists.</p> <p>The client can provide an error message to the user, and can opt to re-attempt the operation specifying a different value for the destination name.</p> <p>Methods: <b>move document</b> (section <a href="#">3.1.5.3.9</a>)</p>
0x00040006	<p>RPC syntax error: expected 'value' after 'value' but saw 'value' instead.</p> <p>This represents a general syntax error; it can occur whenever the client makes an invalid request. Direct client action is not necessary, other than returning the error to the user; however, this error is noteworthy because it indicates an issue with the client request. Client implementations need to determine why incorrect syntax was provided.</p>
0x0004000B	<p>Client closed connection.</p> <p>This error is generated in response to the server-client connection being closed unexpectedly on the client side. The client can opt to re-establish and retry whatever transaction was in progress. This error is also noteworthy for client implementations to determine why the connection was closed prematurely.</p>
0x0004000C	<p>The version of Windows SharePoint Services running on the server is more recent than the version of 'value' being used. A more recent version of 'value' is needed.</p> <p>This error is returned in the case of unsuccessful version negotiation. (This topic is outlined in more detail in section <a href="#">1.7</a>.)</p> <p>The client can opt to respond by blocking the attempted action that would follow version negotiation and/or by returning the error to the user directly.</p> <p>If proper version negotiation occurs, this error is most commonly generated in the context of the <b>server version</b> method (section <a href="#">3.1.5.3.14</a>), but is not exclusive to that context.</p>
0x00090002	<p>A file with the name 'value' already exists. It was last modified by 'value' on 'value'.</p> <p>This error is generated when the server encounters an existing file that was not expected to be present. This error can also occur when "modified by" dates between files sharing the same name were expected to match.</p> <p>The client can opt to provide this message to the user, or retry the operation with a different file name.</p> <p>Methods: (<b>move document</b>, <b>remove document</b> (section <a href="#">3.1.5.3.13</a>), <b>put document</b> (section <a href="#">3.1.5.3.11</a>), and <b>put documents</b> (section <a href="#">3.1.5.3.12</a>))</p>
0x00090005	<p>The URL 'value' is invalid. It can refer to a nonexistent file or folder, or refer to a valid file or folder that is not in the current web.</p> <p>This error can be generated when the client requests an invalid URL.</p> <p>The client can return this message to the user or retry the operation with another URL. <a href="#">&lt;2&gt;</a></p>
0x00090006	<p>There is no file with URL 'value' in this web.</p> <p>This error is generated when the client requests a URL that references no known file.</p> <p>The client can return the error message to the user or retry with another URL. In some situations the client might decide to ignore the error. <a href="#">&lt;3&gt;</a></p>
0x00090007	<p>The folder that would hold URL 'value' does not exist on the server.</p> <p>This error can occur either when a directory that the server expected to be present was not found, or when the client requested a folder that was not present.</p> <p>The client can return the error to the user or retry with another URL. In some situations, the client might decide to ignore the error. <a href="#">&lt;4&gt;</a></p>
0x0009000D	<p>A folder with the name 'value' already exists.</p> <p>This error can be generated when an attempt is made to create or rename a folder, and the target folder name already exists.</p> <p>The client can return this error to the user, or retry the operation again with another folder name.</p> <p>Methods: <b>create url-directories</b> (section <a href="#">3.1.5.3.3</a>), <b>create url-directory</b> (section</p>



Error code	Message
	<a href="#">3.1.5.3.4</a> )
0x0009000E	The file 'value' is checked out or locked for editing by 'value'. This error is generated when a change (or another lock) is attempted on a file that is already locked. The client can opt to provide the user with the full error in sharing scenarios. Method: <b>put document, put documents, checkout document</b> (section <a href="#">3.1.5.3.2</a> )
0x0009000F	The file 'value' is not checked out. This error is generated when an upload or check-in/unlock is attempted for an existing document that was not checked out. The client can return the error message to the user. Methods: <b>put document, put documents, uncheckout document</b> (section <a href="#">3.1.5.3.15</a> )
0x0009001E	Some files have been automatically checked out from the source control repository. This error can be generated in rare cases during document check-in with specific server configuration in source control scenarios. The client can return the error to the user. <5>
0x00090023	The folder 'value' does not exist. Create the folder and then retry the operation. This error can be generated when an operation specifies a nonexistent folder name. The client can return this error to the user, or can opt to prompt the user to retry with another value.
0x000E0002	The method is not recognized. This error is generated when the server has received an invalid request from the client for a method that does not exist on the server. No immediate client action has to be taken; this error suggests troubleshooting on the part of client implementations to determine which invalid request the client was generating.
0x0009003E	Only exclusive checkout for document 'value' is supported with SharePoint Designer-based locking. This error is generated when the client requests shared locking, in the case that the lightweight source control model is enabled. The client can opt to display an error message to the user. Methods: checkout document and <b>get document</b> (section <a href="#">3.1.5.3.6</a> )
0x001E0002	Access denied. This is a generic access denied error. The server can generate this error, as opposed to returning a 401 NOT FOUND error, in cases where the server deliberately chooses not to allow the client to reauthenticate. The client can show the user this error, but cannot attempt to reauthenticate, and cannot treat this as a 401 NOT FOUND error.

### 2.2.2.2.18 Put-Option

The **Put-Option** is used to define the behavior of file upload operations.

```
PUT-OPTION-VAL = "atomic"
```

If this flag is specified, the server does all the needed checking to ensure that all the files can be updated before changing the first one. The server MAY ignore this. <6>

```
PUT-OPTION-VAL =/ "checkin"
```

The document is checked in after it is saved. This flag is only used to support long-term checkout operations. Clients conforming to the FrontPage Server Extensions Remote Protocol MUST NOT send this. Servers MAY ignore this parameter if they choose not to support long-term checkout.

```
PUT-OPTION-VAL =/ "checkout"
```

Valid only if checkin is specified. Notifies the source control of the new content (checkin), but keeps the document checked out. (This is the equivalent to checking the document in, and then checking it out again.) Clients conforming to the FrontPage Server Extensions Remote Protocol defined in this document MUST NOT send this option. Servers MAY ignore this parameter.

```
PUT-OPTION-VAL =/ "createdir"
```

The parent directory is created if it does not exist. When this option is not sent by the client, the server MUST require that the parent directory of a file or folder exists; if the client sends this option, the server SHOULD create the immediate parent of the file being created if needed and if possible. For example, if this option is sent and folder1/folder2/file.txt is being created, the protocol requires the server to create folder2 if needed and possible, but does not require it to create folder1 if it does not already exist.

```
PUT-OPTION-VAL =/ "edit"
```

Uses the date and time the document was last modified to determine whether the item has been concurrently modified by another user. This flag is used to prevent race conditions where two users could edit the same data. If this flag is specified and the inbound modification time does not match the value on the server, the server MUST reject the upload. The client SHOULD send this flag unless a higher level has indicated it needs to overwrite changes. The client MUST send either this flag or the "overwrite" flag, but not both.

```
PUT-OPTION-VAL =/ "forceversions"
```

Not used by the FrontPage Server Extensions Remote Protocol. Acts as though versioning is enabled, even if it is not. Clients conforming to the FrontPage Server Extensions Remote Protocol MUST NOT send this option. Servers MAY ignore this parameter. [<7>](#)

```
PUT-OPTION-VAL =/ "listthickets"
```

Requests that metadata be returned for **thicket** supporting files. The server MUST act as though this parameter was sent if the effective protocol version is less than 5.0.

```
PUT-OPTION-VAL =/ "migrationsemantics"
```

Not used by the FrontPage Server Extensions Remote Protocol. Preserves information about who created the file and when. Clients conforming to the FrontPage Server Extensions Remote Protocol MUST NOT send this option. The server MAY ignore this option. If the server wants to honor this option, it SHOULD do additional authorization and ignore the option if the authorization fails. [<8>](#)

```
PUT-OPTION-VAL =/ "noadd"
```

Does not add the document to source control. Clients conforming to the FrontPage Server Extensions Remote Protocol MUST NOT send this option. The server SHOULD ignore this option.<9>

```
PUT-OPTION-VAL =/ "overwrite"
```

Uses the date and time the document was last modified, as specified in the inbound metadata, rather than the time on the server. The client MUST send either this flag or the "edit" flag, but not both.

```
PUT-OPTION-VAL =/ "thicket"
```

Specifies that the associated file is a thicket supporting file. The server SHOULD detect that the upload includes a thicket supporting file and infer this flag.

```
PUT-OPTION = *(PUT-OPTION-VAL ",") PUT-OPTION-VAL
```

The **PUT-OPTION** data type MUST contain at least one **PUT-OPTION-VAL**.

#### 2.2.2.2.19 Rename-Option

The **Rename-Option** data type is used to define the behaviors of a rename operation.

```
RENAME-OPTION-VAL = "createdir"
```

Creates the parent directory if it does not already exist. This flag is analogous to the "createdir" **PUT-OPTION-VAL** (as specified in **Put-Option** (section [2.2.2.2.18](#))) and has the same semantics.

```
RENAME-OPTION-VAL =/ "findbacklinks"
```

Requests that servers, implementing **link fixup**, fix the linked files other than those moved. The server MAY ignore this flag.

```
RENAME-OPTION-VAL =/ "nochangeall"
```

Do not perform link fixup on links in moved documents. This parameter is used in publishing scenarios. Clients conforming to the FrontPage Server Extensions Remote Protocol MUST NOT send this option. The server MAY ignore this.<10>

```
RENAME-OPTION-VAL =/ "patchprefix"
```

Simulates the move of a directory rather than a file. Clients conforming to the FrontPage Server Extensions Remote Protocol MUST NOT send this option; the server SHOULD ignore this flag for the usage defined in this document.

```
RENAME-OPTION = "none"  
/ RENAME-OPTION-VAL *(", " RENAME-OPTION-VAL)
```

**Note** The client MUST send "none" if it does not want to specify any of the options given by a **RENAME-OPTION-VAL**.

### 2.2.2.3 Irrecoverable Error Responses

When a request is not syntactically valid (for example, if a string other than "true" or "false" is given when a **BOOLEAN** value is expected), when the server is required to allocate more memory than it can, or if the server is in some other irrecoverable failure situation, the server MUST abandon further processing of the client request. If the server encounters an error and cannot proceed with the request, it MUST return a **STATUS** (section [2.2.2.2.17](#)) in HTML Mode. The client SHOULD recognize a **STATUS** returned by the server as an indication that the server processing of the request failed in some way and SHOULD abandon any parsing context it was in.

### 2.2.3 Entry Points

Each method call is an HTTP POST by the client to a URL on the server. There are four entry points on any server, which can be discovered by the clients (see section [4.1.1](#)). Each method entry denotes which entry point MUST be used to call that method. The four entry points are detailed in the following table.

Name	Description
FPShtmlScriptUrl	Used to retrieve the server version method, as specified in section <a href="#">3.1.5.3.14</a> ; also for the <b>URL-to-Web-URL</b> method, as specified in <a href="#">3.1.5.3.16</a> .
FPAuthorScriptURL	Used for all methods to deal with document manipulation.
FPAAdminScriptURL	Not used in the FrontPage Server Extensions Remote Protocol.
TPScriptURL	Used by Windows SharePoint Services <b>dialogview</b> <a href="#">3.1.5.3.17.1</a> .

### 2.2.4 Metadata

Files, folders, and sites in servers have an associated metadictionary, which contains strings (called keys or metakeys) that are mapped to strongly typed values. These metakey-value pairs are called metadata. Server implementations use the metadictionary to store details about entities for later use by the server. Clients store values in metadictionaries for later use by the same client or other clients. A limited number of well-known metakeys are used for client/server communication. These shared metakeys are specified in this document.

The metabase (consisting of a series of metakeys, or FrontPage Server Extension settings and properties) can be found in the `_VTI_CNF` folder beneath each folder on the server in the default file.

The metabase uses the colon character to separate the metakey name from the data type. Next, the pipe ("|") character is used to separate the datatype from the metakey value. A metakey consists of a single line within the default file.

#### 2.2.4.1 Type

Each metakey listed has an associated value Type, which is one of the **METADICT-VALUE** types defined in section [2.2.2.2.11](#). These are generic types, which can be further specified in the individual metakey's description.

#### 2.2.4.2 Client Access

The Client Access heading refers to whether the client is able to set this metadata on the server.

- Read-only: Some communication from server to client is based on configuration information and site settings or document information that is parsed and returned to the client; the client cannot change this information. These metakeys are identified as read-only.
- Read/write: Metadata that the client is able to set on the server is identified as read/write.

#### 2.2.4.3 Applies To

Metadata is associated with various entities on the server, which are identified in the Applies To heading.

- Service: The Service value refers to metadata associated with the Server or a particular site.
- Folder: **Folder** refers to metadata associated with a folder, directory, or list.
- File: File refers to metadata associated with a file or document.

#### 2.2.4.4 vti\_casesensitiveurls

**Type:** INT

**Client Access:** Read-only

**Applies to:** Service

**Description:**

Contains an **INT** flag indicating whether the server is case-insensitive with respect to URLs. If the value is 0, the default, the server is case-insensitive with respect to URLs. If the value is 1, the server is case-sensitive with respect to URLs.

The server SHOULD include this key as an **INT** in the metadata returned by the open service method.

The server MUST return 0 or 1 for this metakey.

It MUST only be 0 if URLs that differ only by case are considered equivalent.

The client SHOULD assume that the value is 0 if this key is not present.

Examples:

```
vti_casesensitiveurls;IX|0  
vti_casesensitiveurls;IX|1
```

#### 2.2.4.5 vti\_dirlateststamp

**Type:** TIME

**Client Access:** Read-only

**Applies to:** Folder

**Description:**

The **vti\_dirlateststamp** metakey is a time stamp that records the approximate time of the first client call to the list documents or move documents methods that included this folder, following a change to the folder contents or metadata.

The server SHOULD include this key as a date in folder metadata, but not child web folder metadata, that it returns to the client. <11>

If the client caches the response of the list documents method requests, it SHOULD cache this time stamp and send this value in the *folderList* parameter in subsequent calls to the list documents method. Servers SHOULD use the value during processing of a call to the list documents method for optimization, to only return data for folders that are out of date on the client.

If the client caches the response of the list documents method requests, it SHOULD cache this information as well.

This value SHOULD be used in the *folderList* parameter when the list documents method is called again to refresh the cached response.

Example:

```
vti_dirlateststamp;TX|08+Jan+2000+19:09:27+-0000
```

#### 2.2.4.6 vti\_filesize

**Type:** INT

**Client Access:** Read-only

**Applies to:** File

**Description:**

The size of the document in bytes.

The server MUST determine the size of the file in bytes and return this value on request by the client.

The server MUST return this key as an integer in the file metadata it returns to the client. It MUST be the size of the file in bytes.

Example:

```
vti_filesize;IX|1120
```

#### 2.2.4.7 vti\_hassubdirs

**Type:** BOOLEAN

**Client Access:** Read-only

**Applies to:** Folder

**Description:**

The folder has subdirectories.

The server MAY return this key and set it to TRUE only if the folder has subdirectories. The client can use this key to decide whether to display user interface elements to expand a node in a rendered directory hierarchy. Clients MUST NOT rely on a server response to this parameter.

The server MUST use and maintain its own value rather than use a client-supplied value for this key.

Examples:

```
vti_hassubdirs;BR|false  
vti_hassubdirs;BR|true
```

#### 2.2.4.8 vti\_isbrowsable

**Type:** BOOLEAN

**Client Access:** Read-only

**Applies to:** Folder

**Description:**

The server SHOULD return this key and set its value to TRUE only if the folder contents are accessible through normal HTTP requests.

The server MUST use and maintain its own value rather than use a client-supplied value for this key.

Example:

```
vti_isbrowsable;BR|false  
vti_isbrowsable;BR|true
```

#### 2.2.4.9 vti\_ischildweb

**Type:** BOOLEAN

**Client Access:** Read-only

**Applies to:** Folder

**Description:**

The folder is the root of another site (a subsite) within this site.

The server SHOULD include this key on folder metadata it enumerates when the folder is the root of another service. The client can use this information to avoid further calls to the **url to web url** (section [3.1.5.3.16](#)) method when traversing a folder hierarchy that might span services. The client also MAY use this key to indicate to the user that the folder represents a service boundary.

The server MUST use and maintain its own value rather than use a client-supplied value for this key.

Examples:

```
vti_ischildweb;BR|false  
vti_ischildweb;BR|true
```

#### 2.2.4.10 vti\_isexecutable

**Type:** BOOLEAN

**Client Access:** Read-only

**Applies to:** Folder

**Description:**

The server SHOULD include this **BOOLEAN** key on folder metadata, but not child web folder metadata. A value of TRUE indicates that the server permits execution of programs in the folder.

The server MUST use and maintain its own value rather than use a client-supplied value for this key.

Examples:

```
vti_isexecutable;BR|false  
vti_isexecutable;BR|true
```

#### 2.2.4.11 vti\_isscriptable

**Type:** BOOLEAN

**Client Access:** Read-only

**Applies to:** Folder

**Description:**

The server SHOULD include this **BOOLEAN** key on folder metadata, but not child web folders. A value of TRUE indicates that the file or the contents of the folder can be executed if they are script files or static content. A value of FALSE only allows static files to be served.

The server MUST use and maintain its own value rather than use a client-supplied value for this key.

Examples:

```
vti_isscriptable;BR|false  
vti_isscriptable;BR|true
```

#### 2.2.4.12 vti\_longfilenames

**Type:** INT

**Client Access:** Read-only

**Applies to:** Service

**Description:**

A flag indicating whether the server supports long file names of up to 255 characters. If the value of this metakey is 1, the server supports long file names. If the value of this metakey is 0, the server does not support long file names.

The server MUST set this value to 0 if it only supports short file names; otherwise, it SHOULD set this value to 1. [<12>](#)

The client MUST send only short file names when dealing with a server reporting 0 for this value.

The server MUST use and maintain its own value rather than use a client-supplied value for this key.

Examples:

```
vti_longfilenames;IX|0
```



vti\_longfilenames;IX|1

### 2.2.4.13 vti\_metatags

**Type:** METADICT-STRING-VECTOR

**Client Access:** Read-only

**Applies to:** File

**Description:**

A list of the META element tag settings for the current document, if any.

For HTML files, the server SHOULD maintain a list of META tags in the file. If the server maintains this list, this key MUST be present and MUST have a pair of entries for each META element tag. For META element tags that have the **HTTP-EQUIV** attribute, the first string in the pair MUST be "HTTP-EQUIV=" followed by the value of the **HTTP-EQUIV** attribute; the second string in the pair MUST be the value of the **CONTENT** attribute. See [\[RFC1866\]](#) section 5.2.5 for details on the **CONTENT** attribute.

For META element tags that have **NAME** and **CONTENT** attributes, the first string in the pair MUST be the value of the NAME attribute, and the second string MUST be the value of the CONTENT attribute.

A client MAY alter the way it displays files based on this value. [<13>](#)

The server MUST parse the document for this value and MAY cache the value for return to the client on request. The client cannot set this value directly but MAY change it by updating the document.

The server MUST use and maintain its own value rather than use a client-supplied value for this key.

Examples:

```
vti_metatags;VR|HTTP-EQUIV=Content-Type text/html;\ charset=utf-16
vti_metatags;VR|HTTP-EQUIV =Content-Language en-us
```

### 2.2.4.14 vti\_showhiddenpages

**Type:** INT

**Client Access:** Read-write

**Applies to:** Service

**Description:**

A flag indicating whether the server is configured to return information for hidden documents.

The server SHOULD [<14>](#) return this key following a call to the open service method. If the value is 0, the server is indicating that it is not configured to support returning information hidden documents. If the value is 1, server support for hidden documents is available, and the client MUST send a value of true for the *listHiddenDocs* parameter to the **list documents** method to have hidden documents included in the results.

Examples:

```
vti_showhiddenpages;IW|0
```

```
vti_showhiddenpages;IW|1
```

#### 2.2.4.15 vti\_sourcecontrolcheckedoutby

**Type:** STRING

**Client Access:** Read-only

**Applies to:** File

**Description:**

The login name of the user who has checked out the document under source control.

The server **MUST** include this value only if a document is checked out either short-term or long-term. The server **MUST** record the authenticated login username of the client when a document is checked out and store it in this metakey for return to the client on request.

The value stored in this metakey **MUST** be the same as the **vti\_username** value of the user who has the document checked out.

The server **MUST** use and maintain its own value rather than use a client-supplied value for this key.

Example:

```
vti_sourcecontrolcheckedoutby;SX|CORPDOMAIN\\johnsmith
```

#### 2.2.4.16 vti\_sourcecontroltimecheckedout

**Type:** TIME

**Client Access:** Read-only

**Applies to:** File

**Description:**

The time the document was checked out on the server.

A server **SHOULD** include this value only if a file is checked out either short-term or long-term. When it is set, it **MUST** provide a time stamp indicating when the file was checked out. [<15>](#)

The client cannot set this value directly but sets it as a side-effect of a check-out method or get document method with a check-out parameter set.

The server **MUST** use and maintain its own value rather than use a client-supplied value for this key.

Example:

```
vti_sourcecontroltimecheckedout;TX|15 Apr 2000 12:52:03 -0000
```

#### 2.2.4.17 vti\_thicketdir

**Type:** STRING, BOOLEAN

**Client Access:** Read-only

**Applies to:** File, Folder

**Description:**

This metakey contains different content depending on whether it appears in the metadata for a document or a folder.

Folder

When applied to a folder, this metakey contains a **BOOLEAN** flag specifying whether the folder contains the supporting files for a thicket.<16>

The server SHOULD include this metakey and set its value to TRUE for a folder that contains files supporting an HTML thicket. For folders that do not contain supporting files, the server SHOULD omit this but MAY send the key as FALSE. The client SHOULD adapt its rendering so that it does not show folders for which this key is TRUE.

Document

When applied to a document, this metakey contains a **STRING** with the name of the folder being used for supporting thicket files.

The server SHOULD include this metakey for a document that is the main file of an HTML thicket.

The server SHOULD update document and folder metakeys to indicate the presence and relationship of an HTML thicket document and its thicket supporting folder when handling the **put document** method with a put\_option value of "thicket".

Example:

```
vti_thicketdir;SW|jobs/index_files
```

### 2.2.4.18 vti\_thicketsupportingfile

**Type:** BOOLEAN

**Client Access:** Read-only

**Applies to:** File

**Description:**

Indicates whether or not the document is a supporting file in an HTML thicket.

The server SHOULD include this key and set its value to TRUE for a file that is a supporting file in an HTML thicket. For files that are not supporting files, the server SHOULD omit this but MAY send the key as false. The client SHOULD adapt its rendering so that it does not show files for which this key is TRUE.

The server SHOULD use and maintain its own value rather than use a client-supplied value for this key. It MAY consider values passed by the client or the **put document** PUT-OPT-VAL of "thicket".

Examples:

```
vti_thicketsupportingfile;BW|false  
vti_thicketsupportingfile;BW|true
```

#### 2.2.4.19 vti\_timecreated

**Type:** TIME

**Applies to:** File, Folder

**Description:**

The time the document or folder was created.

The server SHOULD<17> include this key for files and folders, but not child web folders. It SHOULD reflect the date and time the file or folder was created. The client can use this value to render details about files or folders.<18>

The server MUST use and maintain its own value rather than use a client-supplied value for this key.

Example:

```
vti_timecreated;TR|24 Apr 2000 15:54:33 -0000
```

#### 2.2.4.20 vti\_timelastmodified

**Type:** TIME

**Client Access:** Read-only

**Applies to:** File, Folder

**Description:**

The time the document or folder was most recently modified.

The server SHOULD include this key for files and folders, but not child web folders.<19> It SHOULD approximate the date and time the file or folder was last modified. As specified in **Put-Option** (see section 2.2.2.2.18), under the edit and overwrite values, the server MUST use this for concurrency control and thus might not be able to make this reflect the time that the file was last modified. The client MAY use this value to render details about files or folders; however, **vti\_timelastwritten** will often be more appropriate when it is available. The client SHOULD send this value in accordance with its use, as specified in section 2.2.2.2.18, under the edit and overwrite values.<20>

Example:

```
vti_timelastmodified;TR|24 Apr 2000 15:54:33 -0000
```

#### 2.2.4.21 vti\_timelastwritten

**Type:** TIME

**Client Access:** Read-only

**Applies to:** File, Folder

**Description:**

The time that the document or folder was last saved to local storage on the server.

The server SHOULD include this metakey for files and folders, but not child web folders. The server SHOULD record the date and time that the file or folder content was modified in this metakey. The

client SHOULD use this value to render details about files or folders but MAY use **vti\_timelastmodified** for that purpose.

The server SHOULD use and maintain its own value rather than use a client-supplied value for this key. <21>

Example:

```
vti_timelastwritten;TR|24 Apr 2000 15:54:33 -0000
```

#### 2.2.4.22 vti\_title

**Type:** STRING

**Client Access:** Read-write

**Applies to:** File, Service

**Description:**

The user-readable title of a document or site.

The server SHOULD maintain this key for a site as a user-readable description of the site. The client MAY use this string to refer to the site when presenting information to a user.

The server SHOULD <22> maintain this key for documents. If the document is an HTML document on the server, the server SHOULD parse the document for the content of a **TITLE** element tag and MAY cache this value for return to the client. The client MAY update this metakey for HTML documents, and the server SHOULD rewrite the document with an updated **TITLE** element.

For file streams that the server is unable to parse, the server SHOULD accept a client-supplied metakey value and return it on client request.

The client SHOULD use this metakey value where the title of the document is to be displayed to the user.

Example:

```
vti_title;SR|Trey Research
```

#### 2.2.4.23 vti\_username

**Type:** STRING

**Client Access:** Read-only

**Applies to:** Service

**Description:**

The current authenticated login user name associated with the client.

The server SHOULD include this metakey in the site metadata. When the key is present, the client SHOULD use this key for comparisons with **vti\_sourcecontrolcheckedoutby**.

The server SHOULD include this key in the service metadata. Its value is a string that uniquely identifies the user to the server. When the key is present, the client SHOULD use this key rather than

any information that it passed to the HTTP layer for authentication for comparison with **vti\_sourcecontrolcheckedoutby**.

The server SHOULD use and maintain its own value rather than use a client-supplied value for this key. <23>

Example:

```
vti_username;SX|CORPDOMAIN\johnsmith
```

#### **2.2.4.24 mf-file-status**

**Type:** INT

**Client Access:** Read-only

**Applies to:** Service

**Description:**

The current file transfer status, sent as part of the get documents method server response. A value of 0 indicates success. Any nonzero value indicates a failure.

## 3 Protocol Details

### 3.1 Server Details

A FrontPage Server Extensions client SHOULD initialize a connection with the server. The client can then make as many method calls against the server as needed. The FrontPage Server Extensions Remote Protocol, like HTTP 1.1, as specified in [\[RFC2616\]](#), is a stateless protocol. As such, connections do not need to be closed.

The Windows SharePoint Services dialogview client of the FrontPage Server Extensions Remote Protocol is simply used for viewing information about a server. After the dialogview connection is initialized, the client MAY make any supported calls against the server. The FrontPage Server Extensions Remote Protocol connections do not need to be closed.

The client side of this protocol is simply a pass-through. That is, no additional timers or other state is required on the client side of this protocol. Calls made by the higher-layer protocol or application are passed directly to the transport, and the results returned by the transport are passed directly back to the higher-layer protocol or application.

#### 3.1.1 Abstract Data Model

The FrontPage Server Extensions Remote Protocol is used to communicate with remote file systems for administrative purposes. For those reasons, a data model that looks like a file system is useful.

The FrontPage Server Extensions Remote Protocol has three concepts in its file system: files, directories, and services. Each of these structures MUST have a metadictionary of metadata associated with it. This metadata can be used by clients or servers to store whatever information is relevant to the object. The metadata metadictionary is also often used as a way for the server to communicate information about a file to the client, such as its check-out state.

In addition to the metadata metadictionary, the relevant properties of each file system concept are as follows:

1. Files need to have a content stream, that is, an array of sequenced bytes, that represent the contents of the file.
2. Directories do not have a content stream, but are able to contain files or other directories.
3. Services model the concept of a site. As with directories, they do not have a content stream and are able to contain files or directories. Services are also able to answer questions about their own capabilities (for example, whether they support source control). The capabilities of a service are communicated to clients by using the metadictionary of the service.

##### 3.1.1.1 Source Control

Servers MUST support short-term checkout and can implement a source control sandbox. The server MAY offer users the option to turn the source control sandbox off. [<24>](#)

For a server that has the source control sandbox turned off: When a document is checked out, the server MUST refuse to perform any operations on the document that are not sent by the user who has the document checked out, including another user requesting to read the document.

For a server that has the source control sandbox turned on: When a document is checked out, the server MUST deny any requests to modify the document that are not sent by the user who has the document checked out. However, if another user merely requests the contents of the document, the server can respond with the document stream as it appeared when the document was checked out.

A document that is checked out short-term can have the checkout released in either of two ways: the client can send an **uncheckout document** (section [3.1.5.3.15](#)) request to the server or the short-term checkout expires.

## 3.1.2 Timers

### 3.1.2.1 Short-Term Checkout Timer

A document checked out short-term has a time-out value associated with the checkout. The length of the short-term checkout timer is determined based on client input, as detailed in the **checkout document** method (section [3.1.5.3.2](#)).<25>

## 3.1.3 Initialization

Microsoft FrontPage Server Extensions initialization requires the following operations to take place.

### 3.1.3.1 Determining Server Capabilities

A prospective client MUST perform an HTTP OPTIONS request, as specified in [\[RFC2616\]](#) section 9.2, against a server to determine if it is a FrontPage Server Extensions Remote Protocol server.

When receiving an OPTIONS request, a FrontPage Server Extensions Remote Protocol server MUST return the header 'MS-Author-Via:' with a value that includes 'MS-FP/4.0' to indicate that the server supports the FrontPage Server Extensions Remote Protocol. The server SHOULD list the protocols in the MS-Author-Via header in order of preference from highest to lowest. The client SHOULD use the first client-supported protocols listed in the MS-Author-Via header. For details about the MS-Author-Via header, see [\[MS-WDVSE\]](#) section [2.2.2](#).

When receiving an OPTIONS request, a server that supports SharePoint Team Services **dialogview** MUST return the header '50\_Collab' to indicate that the server supports the **dialogview** for any client with the user agent "Microsoft Data Access Internet Publishing Provider". Results of the HTTP OPTIONS request that are returned from the server SHOULD be cached by clients as a performance optimization.

### 3.1.3.2 Determining Entry Points

#### 3.1.3.2.1 Client Request for Entry Point HTML Page

If the server supports the FrontPage Server Extensions Remote Protocol, the client SHOULD perform an HTTP GET of `_vti_inf.html` at the server root by using the following to determine the entry point for the FrontPage Server Extensions:<26>

```
http://fpseserver/_vti_inf.html
```

where fpseserver is the root site of the server.

#### 3.1.3.2.2 Server Entry Point HTML Page Response

The server MUST reply to the HTTP GET of `_vti_inf.html` with an HTML **page** containing an HTML comment that is an ENTRY-POINT-COMMENT, defined as follows.

```
ENTRY-POINT-COMMENT = COMMENT-BEGIN + SHTML-ENTRY-POINT +  
AUTHOR-ENTRY-POINT + ADMIN-ENTRY-POINT + TPSCRIPT-ENTRY-POINT +  
COMMENT-CLOSE
```



```

COMMENT-BEGIN = "<!-- FrontPage Configuration Information FPVersion="
+ DQUOTE + VERSION + DQUOTE + LF

SHTML-ENTRY-POINT = "FPShtmlScriptUrl=" + DQUOTE +
SERVICE-RELATIVE-URL + DQUOTE + LF

AUTHOR-ENTRY-POINT = "FPAuthorScriptUrl=" + DQUOTE +
SERVICE-RELATIVE-URL + DQUOTE + LF

ADMIN-ENTRY-POINT = "FPAdminScriptUrl=" + DQUOTE +
SERVICE-RELATIVE-URL + DQUOTE + LF

TPSCRIPT-ENTRY-POINT = "TPScriptUrl=" + DQUOTE +
SERVICE-RELATIVE-URL + DQUOTE + LF

COMMENT-CLOSE = "-->"

```

Servers SHOULD return a comment that defines the entry points as follows, as clients MAY assume these values.

```

<!-- FrontPage Configuration Information FPVersion="12.0.0.000"
FPShtmlScriptUrl="_vti_bin/shtml.dll/_vti_rpc"
FPAuthorScriptUrl="_vti_bin/_vti_aut/author.dll"
FPAdminScriptUrl=" vti bin/ vti adm/admin.dll"
TPScriptUrl=" vti bin/owssvr.dll"
-->

```

For descriptions of the fields used in the HTML comment, see section [2.2.3](#). Each method description contains a section that defines which entry point that method will use. Clients MUST post to the correct entry point, or the server SHOULD ignore their request.

The client SHOULD then call the **server version** (section [3.1.5.3.14](#)) method on the root of the server to determine the latest (highest) server version of the protocol that the server supports. The client SHOULD use its own version number for the **PROTOCOL-VERSION-STRING** of the **METHOD-VALUE**, unless and until it knows the server version number, in which case it SHOULD use whichever of the two version numbers is lower.

On completing this initialization process, and thereafter the client SHOULD send that lower version number and the server MUST respond with either the same version number it received or with its own version number.

If the client is opening a site that is not at the root of the server, the client MUST call the **url to web url** (section [3.1.5.3.16](#)) request. This method accepts a **server-relative URL**, such as `"/subsite/folder/document.txt"`. It would return the server-relative URL of the site, `"/subsite"`, and the service-relative URL of the item, `"/folder/document.txt"`.

The client MUST then post all further methods to the site that it wants to communicate with. The `service_name` parameter MUST NOT be used by the client to denote what site it is communicating with, as this parameter is ignored by the server. For example, if the client wants to check out `"/subsite/folder/document.txt"`, it needs to post to the **SHTML-ENTRY-POINT** of the subsite. Assuming the default value of the **SHTML-ENTRY-POINT**, that would be:

```
http://fpseserver/subsite/_vti_bin/shtml.dll/_vti_rpc
```

The client then refers to the file it wants to check out by its service-relative URL within the FrontPage Server Extensions Remote Protocol request. Finally, the client SHOULD call the **open service** (section [3.1.5.3.10](#)) method on the appropriate site to begin the conversation. The client can then make whatever method calls it needs against the server.

The SharePoint Team Services dialogview client SHOULD perform an HTTP HEAD request, as specified in [\[RFC2616\]](#), section 9.4 against owssvr.dll (for details, see section [3.1.3](#)). If the return code from the server is 200, the client SHOULD perform an HTTP GET, as specified in [\[RFC2616\]](#), section 9.3 to retrieve the full page body. If the return code from the server is 410, the client MUST NOT perform an HTTP GET on the server.

### 3.1.4 Higher-Layer Triggered Events

None.

### 3.1.5 Processing Events and Sequencing Rules

Aside from initialization, methods can be called in any order, as determined by the client application's needs. The only methods forming a strong logical pair are the **checkout document** (section [3.1.5.3.2](#)) and the **uncheckout document** (section [3.1.5.3.15](#)) methods. Clients that call the former SHOULD call the latter, because a document that is checked out cannot be edited by any other users until the checkout is revoked.

Protocol Examples, section [4](#), provides examples that show common operations being performed against the server, giving some guidance about common method sequences.

#### 3.1.5.1 HTTP Headers

The client SHOULD send an X-Vermeer-Content-Type header, as specified in [\[RFC2616\]](#), section 14.17, with the same value as the standard HTTP Content-Type header to safeguard against one-click attacks (see section [5.1](#)). The server MUST use this header, if present, to determine the Content-Type of the request. If this header is not present, the server SHOULD fail the request. [<27>](#)

Clients MUST also include the string "FrontPage" (case-sensitive) in its User-Agent header, as specified in [\[RFC2616\]](#), section 14.43. The server MAY alter its responses when the client does not do this. [<28>](#)

Except as specified in the **get documents** (section [3.1.5.3.7](#)) method, server responses MUST have the HTTP Content-Type "application/x-vermeer-rpc".

#### 3.1.5.2 Method Formatting

A set of formatting conventions are used for each FrontPage Server Extensions method specified in the **Methods** section (section [3.1.5.3](#)) later in this document.

The Methods section begins with a brief description of the method's purpose. The Tokens section follows the description and corresponds to the REQUEST element that specifies the set of arguments for each method. Clients can pass in any subset of the given arguments, although some arguments are required. If an argument is not required, unless otherwise specified, the server SHOULD use a default value of FALSE for **BOOLEAN** arguments, 0 for **INT**, **UNSIGNED-INT**, and **DOUBLE** arguments, an empty string for **STRING** and **URL-STRING** arguments, an empty **METADICT** for **METADICT** arguments, and an empty VECTOR-X for **VECTOR-X** type arguments. Clients MAY pass the arguments in any order, and servers MUST accept them in any order. Clients SHOULD NOT pass arguments unless they are mentioned in this document. When a server is passed an argument that it does not recognize, the server SHOULD treat it as a syntax error. It MAY choose to ignore the parameter instead. [<29>](#)

Each argument definition starts with an argument name in bold type. The argument name corresponds to the **ARG-NAME** element. The data type is listed in the argument description, and it defines the required format for the **ARG-VALUE** element.

The URL section defines the URL as provided by **\_vti\_inf.html** to which clients MUST post when using this method.

The Return Values section specifies the set of return values, and its formatting is similar to the Fields section. The **RET-NAME** corresponds to the return value name in bold type. The format of the **RET-VALUE** is defined by the return value type. Servers can return arguments in any order, and clients MUST accept the parameters in any order.

In error conditions at the FrontPage Server Extensions Remote Protocol level, the server SHOULD return a **RET-NAME RET-VALUE** pair where the **RET-NAME** is "status" and the **RET-VALUE** is a **STATUS** object (see section [2.2.2.2.17](#)). A client SHOULD ignore all other return values if a status is present. Even though this is an error, it SHOULD be encapsulated in an HTTP 200 response, as specified in [\[RFC2616\]](#) section 10.4.2.

Lower layers (such as HTTP or IP) can also return errors. For example, the FrontPage Server Extensions Remote Protocol layer on the server SHOULD indicate to the HTTP layer that it requires authentication, which in turn SHOULD cause the HTTP layer to send a 401 message in response, as specified in [\[RFC2616\]](#) section 10.4.2, to unauthenticated requests.

If the lower layers pass on an unauthenticated request from the client to the FrontPage Server Extensions Remote Protocol server, the server SHOULD respond with an HTTP 401 as specified in [\[RFC2616\]](#) section 10.4.2. It MAY include an entity body containing a descriptive error message in the response. [<30>](#)

### 3.1.5.3 Methods

Each request by a client that uses the FrontPage Server Extensions Remote Protocol MUST begin with a field that contains the method name. For example, the **get document** (section [3.1.5.3.6](#)) request has the string "get document" in the method field. Following the method name field is the list of arguments that MAY be specified in any order.

The client POSTs the following FrontPage Server Extensions Remote Protocol requests to the server. These requests are specified in the sections that follow.

#### 3.1.5.3.1 Common Method Arguments

The following argument values are common to many of the methods.

Tokens

**validateWelcomeNames:** This parameter MUST NOT be passed by a client that conforms to the FrontPage Server Extensions Remote Protocol. The server MAY ignore this value; clients MUST NOT rely on a server response to this parameter.

**listLinkInfo:** Clients conforming to the FrontPage Server Extensions Remote Protocol MUST send false for this parameter. The server MAY ignore this parameter; clients MUST NOT rely on a server response to this parameter.

**service\_name:** This parameter is obsolete, but the client MAY send this **URL-STRING** defining the server-relative URL of the site that the request is addressed to. However, the server MUST ignore it. The URL to which the request is posted MUST be used by the server to determine what site the request is issued against.

**return\_stats:** The client MUST NOT send this **BOOLEAN** value. The server SHOULD ignore this value; clients MUST NOT rely on a server response to this parameter. [<31>](#)

#### 3.1.5.3.2 checkout document

The **checkout document** request is used by the client to enable the currently authenticated user to make changes to a document under source control.

Tokens

**service\_name:** This parameter is deprecated; see **service\_name** in section [3.1.5.3.1](#).

**document\_name:** The client MUST send and the server MUST interpret this **URL-STRING** as the service-relative path of the document to check out.

**force:** This parameter is an **INT** bitmask; bits 0 and 1 are defined as follows. The client MUST set all unused bits to zero; the server MUST ignore unused bits.

Mask	Meaning
Bit 0 0x00000001	Force checkout. This feature is currently unimplemented and reserved for future use. Clients MUST NOT set this bit, and servers MUST ignore it.
Bit 1 0x00000002	Refresh short-term checkout. The client MUST set this bit if, and only if, it already has a short-term checkout on the file and wants to extend the time-out on it. The server MUST attempt to create a new short-term checkout if this bit is not set, and it MUST attempt to extend an existing short-term checkout if this bit is set. It SHOULD return an error (0x0009000E) if this bit is not set and a short-term checkout exists. <a href="#">&lt;32&gt;</a>

The client MUST set all unused bits to zero, and the server MUST ignore all unused bits. Range: -2147483648 to 2147483647; only 0 and 2 are currently allowed.

**timeout:** An INT that defines the number of minutes that a short-term checkout is requested. To retain the lock, the client MUST renew its short-term checkout within this interval. The client MUST NOT send negative values, and the server SHOULD ignore them by not specifying a timeout for the short-term checkout. The value zero is reserved for server implementations that understand long-term checkout and thus MUST NOT be sent by clients. Servers MAY ignore requests in which this parameter is set to zero by not specifying a time for the short-term checkout. Range: 1 to 2147483647. [<33>](#)

**validateWelcomeNames:** For semantics, see section 3.1.5.3.1.

URL

FPAuthorScriptUrl

Return Values

The server can return the error codes 0x0009000E and 0x0009003E [2.2.2.2.17.1](#).

**meta\_info:** A **METADICT** containing information about the document that has been checked out.

### 3.1.5.3.3 create url-directories

The **create url-directories** request allows the client to create one or more directories (folders) on the site. This operation is not atomic. If the bulk operation fails, some of the earlier directories might have been created. In the case of a failure, the client SHOULD query the server with **list documents** (section [3.1.5.3.8](#)) or if it needs to determine what folders were created. Clients SHOULD use this method rather than **create url-directory** (section [3.1.5.3.4](#)).

Tokens

**service\_name:** This parameter is deprecated: For semantics, see **service\_name** in section [3.1.5.3.1](#).

**urldirs:** A **VECTOR-URL-DIRECTORY** specifying the names and metadata of folders to create. The client **MUST** specify one **URL-DIRECTORY** for each folder it wants to create. The server **SHOULD** create the directories in the order specified. The client **MUST** send this parameter.

URL

FPAuthorScriptURL

Return Values

The server can return the error code 0x0009000D [2.2.2.2.17.1](#).

**message:** A **STRING** description of the action taken by the server. This is intended for debugging and **SHOULD** be ignored by the client.

#### 3.1.5.3.4 create url-directory

The **create url-directory** request is used by the client to create a folder for the current site. Clients **SHOULD** use **create url-directories** (section [3.1.5.3.3](#)) instead of using this deprecated method. However, to maintain compatibility with all client versions, servers **MUST** support this method.

Tokens

**service\_name:** This parameter is deprecated: For semantics, see *service\_name* in section [3.1.5.3.1](#).

**url:** A **URL-STRING** specifying the URL of the directory to be created. The client **MUST** send this parameter.

**executable:** A **BOOLEAN** indicating if the security settings for the newly created directory can allow execution of entities within it. If **TRUE**, the request is to create an executable folder. Clients that conform to the FrontPage Server Extensions Remote Protocol **MUST** send **FALSE**. Servers **MUST** ignore this for architectures that do not support the notion of an executable directory. The server **SHOULD** ignore this for security reasons. [<34>](#)

URL

FPAuthorScriptURL

Return Values

The server can return the error code 0x0009000D [2.2.2.2.17.1](#).

**message:** A **STRING** description of the action taken by the server. This is intended for debugging and **SHOULD** be ignored by the client.

**urldir:** A **URL-DIRECTORY** containing the metadata for the directory that was created.

#### 3.1.5.3.5 getDocsMetaInfo

The **getDocsMetaInfo** request is used by the client to retrieve metadata for the files and directories in the current site. The **getDocsMetaInfo** request is similar in function to the **list documents** (section [3.1.5.3.8](#)) request except that it only retrieves metadata for the files or folders specified through the *url\_list* parameter. The list documents requests information about all of the files and folders under a given directory; **getDocsMetaInfo** requests information about the URLs requested.

Tokens

**service\_name:** This parameter is deprecated: See *service\_name* in section [3.1.5.3.1](#).

**listHiddenDocs:** A **BOOLEAN** value that specifies whether the client requests the hidden documents in a site be included in the documents listed. If TRUE, the server MAY list hidden documents; if FALSE, the server MAY leave hidden documents out of the list returned. <35>

**listLinkInfo:** For semantics, see section 3.1.5.3.1.

**url\_list:** A **VECTOR-STRING** list of service-relative URLs about what client wants information. If *url\_list* is empty, it is treated as though it is a single vector with "" (the root of the site).

**validateWelcomeNames:** For semantics, see section 3.1.5.3.1.

URL

FPAuthorScriptURL

Return Values

**document\_list:** A **DOCUMENT-LIST-RETURN-TYPE** (section [2.2.2.2.13](#)) specifying the name and metadata for the set of documents.

**urldirs:** A **VECTOR-URL-DIRECTORY** containing information about folders and subsites in the current site.

### 3.1.5.3.6 get document

The **get document** request can be used by the client to retrieve a document and its metadata for viewing or editing on a client.

Tokens

**service\_name:** This parameter is deprecated. For semantics, see *service\_name* in section [3.1.5.3.1](#).

**document\_name:** A URL-STRING that the client MUST send, and the server MUST interpret this value as the service-relative path of the document to retrieve. The client MUST send this parameter.

**effective\_protocol\_version:** A **VERSION** (section [2.2.2.2.9](#)) provides a way for the client to supersede the version sent as the **PROTOCOL-VERSION-STRING** in the **METHOD-KEY-VALUE** of the request. For details, see section [2.2.2.2.6](#). A client conforming to the FrontPage Server Extensions Remote Protocol MUST NOT send this parameter. A server SHOULD ignore this parameter.

**old\_theme\_html:** A **BOOLEAN** value that determines how theme elements are rendered on a page. If TRUE, the page is returned using HTML that is compatible with **effective\_protocol\_version**. If FALSE, the **effective\_protocol\_version** corresponds to Microsoft FrontPage 97 or an earlier version of FrontPage that does not support themes. In this case, the theme information disappears, and the theme elements are rendered in the HTML used on the page. A client conforming to the FrontPage Server Extensions Remote Protocol MUST send FALSE (either by omitting the parameter and taking the default or by explicitly sending FALSE). A server MAY assume this parameter to be FALSE.

**expandWebPartPages:** A **BOOLEAN** value reserved for future use. This parameter MUST be ignored by the server regardless of a TRUE or FALSE value. The client MUST send false for this parameter, either explicitly or by omitting the parameter.

**force:** A **BOOLEAN** value reserved for future use. This parameter MUST be ignored by the server, regardless of a TRUE or FALSE value. The client MUST send FALSE for this parameter, either explicitly or by omitting the parameter.

**doc\_version:** A STRING containing the source control version number of the document being retrieved. An empty string (the default value) is a request for the current version of the document. A client conforming to the FrontPage Server Extensions Remote Protocol MUST omit this parameter or explicitly send the empty string. A server MAY ignore this parameter and always send the most recent version of the document.

**get\_option:** A **STRING** value that determines how documents are checked out of source control. Passing any string not listed in the following table is considered the same as "none".

Value	Meaning
none	Do not check out the file.
chkoutExclusive	Check out the file exclusively.
chkoutNonExclusive	Check out the file nonexclusively, if the source control system is configured to allow nonexclusive checkouts. If it is not, the server SHOULD treat this as <code>chkoutExclusive</code> instead. <a href="#">&lt;36&gt;</a>

The checkout MUST logically occur before the server begins sending the document to the client. If the checkout cannot occur, the server MUST return an error message with a **Status** set to one of the error values listed in section [2.2.2.2.17.1](#) and not return the document.

**timeout:** An **UNSIGNED-INT** that specifies the number of minutes the server MUST retain the short-term checkout. To retain the lock longer, the client MUST renew its short-term checkout within this interval. For details, see **checkout document**, section [3.1.5.3.2](#). The client MUST NOT send negative values, and the server SHOULD ignore them by not specifying a timeout. The value zero is reserved for server implementations that understand long-term checkout and thus MUST NOT be sent by clients. Servers MAY ignore requests in which this parameter is set to zero by not specifying a timeout. Range from 1 through 4294967296. [<37>](#)

**validateWelcomeNames:** For semantics, see section [3.1.5.3.1](#).

URL

FPAuthorScriptUrl

Return Values

The server can return the error code 0x0009003E [2.2.2.2.17.1](#).

**message:** A **STRING** description of the action taken by the server. This is intended for debugging and SHOULD be ignored by the client.

**document:** The **DOCINFO** that contains the document name and metadata for the document that has been retrieved.

### 3.1.5.3.7 get documents

The **get documents** request is used by the client to retrieve a set of documents for viewing on a client computer.

Tokens

**service\_name:** This parameter is deprecated. See **service\_name** in section [3.1.5.3.1](#).

**url\_list:** A **VECTOR-STRING** list of service-relative URLs specifying what documents will be retrieved by the current request.

**effective\_protocol\_version:** This parameter has the same semantics as *effective\_protocol\_version* in **get document** (section [3.1.5.3.6](#)).

**old\_theme\_html:** This parameter has the same semantics as *old\_theme\_html* version in **get document**.



**expandWebPartPages:** A **BOOLEAN** reserved for future use. This parameter **MUST** be ignored by the server regardless of a **TRUE** or **FALSE** value. The client **MUST** send **false** for this parameter either explicitly or by omitting the parameter.

**validateWelcomeNames:** For semantics, see section 3.1.5.3.1.

URL

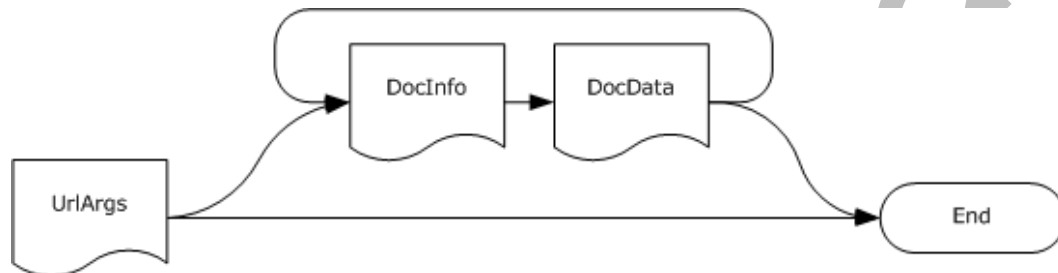
FPAuthorScriptUrl

Return Values

The server **MUST** return a multipart/mixed MIME document ([\[RFC1341\]](#)), and the responses **MUST** be in **URL Mode** rather than **HTML Mode**.

Each part of the response **MUST** be one of the following three types: **UrlArgs** part, **DocInfo** part, or **DocData** part. These types are defined and scoped to this section; they exist merely to provide convenient names for the concepts.

The response **MUST** begin with a **UrlArgs** part. After the first part, each part determines the type of the next part as shown in the following illustration.



**Figure 3: Type encoding sequence for get documents response**

**UrlArgs part:** The **UrlArgs** part of the response **MUST** have a content-type of application/x-www-form-urlencoded and **MUST** have a **METHOD-KEY-VALUE** whose **REQUEST-NAME-STRING** is "get documents" followed by a **RET-NAME/RET-VAL** pair whose **RPC-KEY-STRING** is "current\_time" and whose **RPCVALUE** is a **TIME**.

"method" VALUESEP "get documents" ":" PROTOCOL-VERSION-STRING

ARGSEP "current\_time" TIME LF

The **UrlArgs** part **MUST** either be followed by a **DocInfo** part or the response **MUST** end.

**DocInfo part:** The **DocInfo** part **MUST** be application/x-www-form-urlencoded and be a **DOC-INFO-REQUEST**. Each **DocInfo** part **MUST** be followed by a **DocData** part.

**DocData part:** The **DocData** part **MUST** have a Content-Type of application/octet-stream. It **MUST** contain the stream of the document corresponding to the previous **DocInfo** part. Each **DocData** part **MUST** be followed by a **DocInfo** part or the response **MUST** terminate.

**Note** The **mf-file-status** metadata **MUST** be added to the **METADICT** returned in the response. If it is nonzero, the remainder of the response **SHOULD** be discarded by the client. This key is not considered metadata about the file but rather metadata about the transport, which the client **SHOULD** examine and **SHOULD** remove before passing on the **METADICT** to higher layers.

### 3.1.5.3.8 list documents



The **list documents** request is used by the client to request a list of files, folders, and sites contained in a given folder.

Tokens

**service\_name:** This parameter is deprecated. See *service\_name* in section [3.1.5.3.1](#).

**folderList:** The *folderList* parameter is a **METADICT** containing the names of folders as the keys and the corresponding time stamps of type **TIME** for the client's cached metadata for those folders as the values. The client SHOULD send the time stamps for the folders' metadata if it has cached this information. If a folder's name and time stamp is missing from the *folderList* parameter, the server MUST return that folder's contents with all available metadata. Otherwise, the server MUST return all available metadata for only those files, folders, and subsites that have changed since the time stamp recorded in the folder list. For files, folders, and subsites that have not changed, the server SHOULD return an empty **METADICT** to indicate that the client's cache is still valid. The client MUST interpret an empty **METADICT** as an indication of validity.

The following example of a value for the *folderList* parameter requests metadata for all files in the root folder of the website and in the images folder that have a time stamp later than the specified dates and times. For other files in these folders, only the file name and an empty **METADICT** are included in the response. For all other folders within the *initialUrl* parameter, all available metadata MUST be returned.

```
[;TX|06 Apr 2006 20:03:02 -0000;images;TX|05 Apr 2006  
20:03:02 -0000]
```

**initialUrl:** A **URL-STRING** containing the URL of the folder from which documents are listed. This MUST be a service-relative URL.

**listBorders:** A **BOOLEAN** value that specifies whether the contents of the shared borders directory that contains shared border pages is to be listed. If TRUE, the contents are listed; if FALSE, they SHOULD NOT be listed. The server SHOULD honor this parameter, but the client MUST NOT rely on it. [<38>](#)

**listChildWebs:** A **BOOLEAN** value that specifies whether the server response includes the names of the child site folders in the **urldirs** return value. If TRUE, and the *listFolders* parameter is also sent as TRUE, the names SHOULD be included; if FALSE, they SHOULD NOT be included. If the client sends this parameter as TRUE, the client SHOULD also send the *listFolders* parameter as TRUE. The server SHOULD ignore a TRUE value for this parameter if the *listFolders* parameter is not also TRUE. The server SHOULD honor this parameter, but the client MUST NOT rely on it. [<39>](#)

**listDerived:** A **BOOLEAN** value that specifies whether the list of files in the derived documents folder is included in the response. If TRUE, the list of files SHOULD be included as part of the response; if FALSE, they SHOULD NOT be included. The server SHOULD honor this parameter, but the client MUST NOT rely on it. [<40>](#)

**listExplorerDocs:** A **BOOLEAN** value that specifies if task list files (*\_vti\_pvt/\_x\_todo.htm* and *\_vti\_pvt/\_x\_todoh.htm*) are listed. If TRUE, the files MAY be listed. If FALSE, they MUST NOT be listed. FrontPage Server Extensions Remote Protocol clients MUST NOT send this parameter; the server SHOULD ignore it. [<41>](#)

**listFiles:** A **BOOLEAN** value that specifies whether the client requests information about the files in each directory that appears in the response. If TRUE, the server MUST include the **document\_list** return value; if FALSE, the server SHOULD exclude the **document\_list** return value. The server SHOULD use a default value of TRUE for this parameter unless the client specifies otherwise [<42>](#)

**listFolders:** A **BOOLEAN** value that specifies whether the server response includes the names and metadata of folders under the URL specified by the *initialUrl* parameter. If TRUE, the directory names

and metainformation SHOULD be included; if FALSE, they MUST NOT be included. The server SHOULD use a default value of TRUE for this parameter unless the client specifies otherwise.

The server SHOULD honor this parameter, but the client MUST NOT rely on it.

**listHiddenDocs:** A **BOOLEAN** value that specifies whether hidden documents in a site are listed. If true, the documents SHOULD be listed; if false, they SHOULD NOT be listed. The server SHOULD honor this parameter, but the client MUST NOT rely on it.

**listIncludeParent:** A **BOOLEAN** value that specifies whether an entry for the **initialUrl** field is included in the server response. If TRUE, the entry SHOULD be included; if FALSE, it SHOULD NOT be included. The server SHOULD honor this parameter, but the client MUST NOT rely on it.

**listLinkInfo:** For semantics, see section 3.1.5.3.1. The server SHOULD use a default value of TRUE for this parameter unless the client specifies otherwise.

**listRecurse:** A **BOOLEAN** value that specifies whether the client requests the server to recursively list the subfolders of folders under the URL specified by the *initialUrl* parameter. If TRUE, the subfolders SHOULD be listed; if FALSE, they SHOULD NOT be listed. The server SHOULD use a default value of TRUE for this parameter unless the client specifies otherwise. If *listRecurse* is TRUE, all subfolders of that folder are listed; otherwise, only the immediate subfolders are listed. The server SHOULD honor this parameter, but the client MUST NOT rely on it.

**listThickets:** A **BOOLEAN** value that specifies whether thicket supporting files and folders are included in the server response. If TRUE, the supporting files and folders SHOULD be included; if FALSE, they SHOULD NOT be included. The server SHOULD use a default value of TRUE for this parameter unless the client specifies otherwise. The server SHOULD honor this parameter, but the client MUST NOT rely on it.

**platform:** A **STRING** specifying the operating system of the client. This parameter MUST NOT be passed by clients conforming to the FrontPage Server Extensions Remote Protocol.

**validateWelcomeNames:** For semantics, see section 3.1.5.3.1.

URL

FPAuthorScriptUrl

Return Values

**document\_list:** A **DOCUMENT-LIST-RETURN-TYPE** (section [2.2.2.2.13](#)) that the server SHOULD omit if the *listFiles* parameter was sent as FALSE. If this value is returned, the server MUST list the names and metadata for the requested set of documents specified by the parameters of the request. [<43>](#)

**bot\_list:** A **DOCUMENT-LIST-RETURN-TYPE** return value that MUST NOT be included when the platform parameter is not sent. Because clients conforming to the FrontPage Server Extensions Remote Protocol MUST NOT send this parameter, the server need not support this return value. [<44>](#)

**urldirs:** A **VECTOR-URL-DIRECTORY** containing the names and metadata about folders and root directories of subsites. The server MUST omit this return value if the *listFolders* parameter was sent as FALSE. If this value is returned, the server MUST enumerate the folders and websites specified by parameters of the request.

### 3.1.5.3.9 move document

The **move document** request is used by the client to change the URL of a selected document or folder in the site. Note that moving a document will change its URL.

Tokens

**service\_name:** This parameter is deprecated. See *service\_name* in section [3.1.5.3.1](#).

**oldUrl:** A **URL-STRING** that specifies the original service-relative URL for a document or folder whose URL is to be changed. The client **MUST** send this parameter.

**newUrl:** A **URL-STRING** that specifies the new service-relative URL for a document or folder whose URL is to be changed. The client **MUST** send this parameter.

**url\_list:** A **VECTOR-URL-STRING** list of service-relative URLs of documents whose links ought to be considered for link fixup purposes. This is a hint passed from the client to the server. Servers that implement link fixup **SHOULD NOT** rely on the client sending the correct list. Clients that conform to the FrontPage Server Extensions Remote Protocol **MUST** send an empty list (either explicitly or by omitting the parameter and taking the default). Servers **MAY** ignore this parameter.

**rename\_option:** This tells the server to change certain behaviors during the rename or copy operation, as defined in **Rename-Option**<45> (section [2.2.2.2.19](#)).

**put\_option:** A set of flags describing how the operation ought to behave as detailed in **Put-Option** (section [2.2.2.2.18](#)). In particular, the server **MUST** overwrite an existing file or folder if, and only if, the "overwrite" flag is added.<46>

**docopy:** A **BOOLEAN** value specifying whether the move document request copies or moves a file or folder to the destination. If **TRUE**, the file or folder **SHOULD** be copied; if **FALSE**, the file or folder **SHOULD** be moved. The default value is **FALSE**.

**validateWelcomeNames:** For semantics, see section 3.1.5.3.1.

URL

FPAuthorScriptUrl

Return Values

The server can return the error codes 0x00020019 and 0x00090002 [2.2.2.2.17.1](#).

**message:** A **STRING** description of the action taken by the server. This is intended for debugging and **SHOULD** be ignored by the client.

**oldUrl:** A **URL-STRING** specifying the former URL for a document or folder whose name or directory has changed.

**newUrl:** A **URL-STRING** specifying the new URL for a document or folder whose name or directory has changed.

**document\_list:** A **DOCUMENT-LIST-RETURN-TYPE** (section [2.2.2.2.13](#)) specifying the set of documents whose metadata has changed as a byproduct of the move due to fixing links.

**moved\_docs:** A **DOCUMENT-LIST-RETURN-TYPE** of URLs and metadata for moved or copied files. Clients **MAY** assume and servers **MUST** ensure that this return value is equivalent to the **document\_list** return value of the list documents method (section [3.1.5.3.8](#)) when **newUrl** is the URL of a folder, assuming that the following three parameter values were passed into list documents (section 3.1.5.3.8).

Parameter values passed into list document:

- *initialUrl*: The value that the client passed to the newUrl parameter of the current call to move the documents.
- *listRecurse*: **TRUE**.
- *includeParent*: **TRUE**

**moved\_dirs**: A **VECTOR-URL-DIRECTORY** of URLs and metadata for moved or copied folders. Clients MAY assume and servers MUST ensure that this return value is equivalent to the **urldirs** return value of the list documents method (section 3.1.5.3.8) when **newUrl** is the URL of a folder, assuming the following parameter values were passed into list documents (section 3.1.5.3.8).

Parameter values passed into list documents:

- *initialUrl*: The value that the client passed to the *newUrl* parameter of the current call to move the documents.
- *listRecurse*: TRUE.
- *includeParent*: TRUE

As with the preceding **moved\_docs** return value, the client SHOULD use this result to update any metadata cache it is maintaining.

### 3.1.5.3.10 open service

The **open service** request is used to provide site metadata to the client computer.

Tokens

**service\_name**: This parameter is deprecated. See **service\_name** in section [3.1.5.3.1](#).

**effective\_protocol\_version**: This parameter has similar semantics to **effective\_protocol\_version** in **get document** (section [3.1.5.3.6](#)). It is used in publishing scenarios in which the client passes the version of the intended target server. A client conforming to this subset of the protocol MUST NOT send this parameter. A server SHOULD ignore this parameter. [<47>](#)

URL

FPAuthorScriptUrl

Return Values

**service**: A **SERVICE\_RETURN\_TYPE** (section [2.2.2.2.14](#)) specifying the service name and site metadata.

### 3.1.5.3.11 put document

The **put document** request is used by the client to write a single file to a directory in an existing site.

Tokens

**service\_name**: This parameter is deprecated. See *service\_name* in section [3.1.5.3.1](#).

**document**: A **DOCINFO** specifying the name and metadata of the file to write to the directory. The client MUST send this parameter.

**put\_option**: A set of flags describing how the operation behaves; see **Put-Option** (section [2.2.2.2.18](#)) for specific semantics for the options.

**comment**: A **STRING** that provides a check-in comment for the file being uploaded. The server MUST ignore this parameter unless the "checkin" PUT-OPTION-VAL is specified in the *put\_option* parameter. Because clients conforming to the FrontPage Server Extensions Remote Protocol MUST NOT send the "checkin" PUT\_OPTION\_VAL, as specified in **Put-Option**, servers MAY ignore this parameter.

**keep\_checked\_out**: A **BOOLEAN** value used to determine a specified document's behavior in source control. If TRUE, the document SHOULD be checked in to source control and immediately checked back out; if FALSE, the document SHOULD be checked in. The server MUST treat this as equivalent to

the "checkout" PUT-OPTION-VAL, as specified in **Put-Option**. Clients conforming to the FrontPage Server Extensions Remote Protocol MUST send FALSE, either explicitly or by omitting this parameter.

**validateWelcomeNames:** For semantics, see section 3.1.5.3.1.

URL

FPAuthorScriptUrl

Return Values

The server can return the error codes 0x00090002, 0x0009000E, and 0x0009000F [2.2.2.2.17.1](#).

**message:** A **STRING** description of the action taken by the server. This is intended for debugging and SHOULD be ignored by the client.

**document:** A **DOCINFO** containing the name and metadata of the document as it was saved. Note that even though the return value is called "document", it does not contain the document stream. The server MAY update the metadata when the document is saved. The server MUST return the updated metadata in the document return value.

**Note** The document contents MUST be sent right after the parameters in the client request. Because arguments always end with an LF in **URL Mode**, there is no need for further delimiters. The document stream cannot be encoded in any way, as whatever is sent over the wire will be directly stored as the file contents, without further translation.

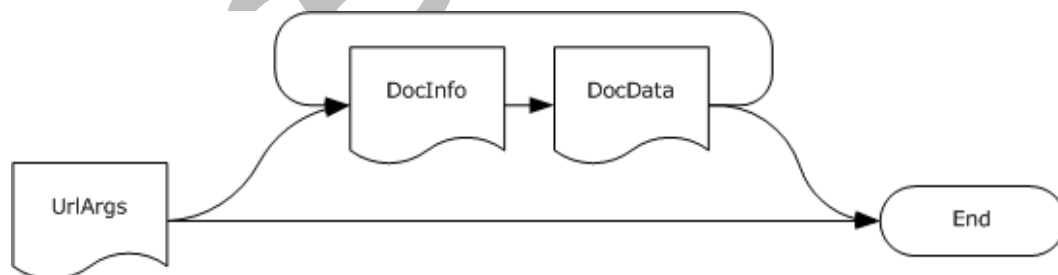
### 3.1.5.3.12 put documents

The **put documents** request is used by the client to write multiple files to a site. This request SHOULD be used when a higher level wants to save a document that contains other files (such as graphics) from an application directly to a site directory.

This request is different from other FrontPage Server Extensions Remote Protocol requests because it receives multiple streams. The following details show how the server MUST parse the method.

The HTTP POST MUST be a multipart/mixed MIME document. Each part of the POST MUST be one of the following four types: **UriArgs**, **DocInfo**, **DocData**, or **End**. These types are defined and scoped to this section; they exist merely to provide convenient names for the concepts.

The request MUST begin with a **UriArgs** part. After the first part, each part determines the type of the next part, as shown in the following illustration.



**Figure 4: Type encoding sequence for POST**

The **UriArgs** part MUST have a content-type of application/x-www-form-urlencoded, as specified in [\[RFC2616\]](#) section 14.17, and MUST be parsed using the same rules as a normal method request. The **REQUEST-NAME-STRING**, as specified in [\[RFC4234\]](#), MUST be **put documents** and it accepts the list of parameters given in the Tokens section that follows. The server SHOULD fail with error code 0x0004000C if the client is an earlier version than the server supports, just like any other method.

If the next part exists, it MUST be **DocInfo** part with a content-type of application/x-www-form-urlencoded, as specified in [RFC2616] section 14.17, or it MUST be **End** with a content-type of text/html.

**DocInfo part:** The server SHOULD parse the **DocInfo** part as a **DOC-INFO-Request** (for details, see **DOC-INFO-Request** (section [2.2.2.2.15](#))). The next MIME part MUST be a **DocData** part.

**DocData part:** A **DocData** part can have any content-type and MUST be the stream corresponding to the **DOCINFO** sent in the prior **DocInfo** MIME part. If the next part exists, it SHOULD be **DocInfo** if its content-type is application/x-www-form-urlencoded, as specified in [RFC2616] section 14.17, or SHOULD be **End** if its content-type is text/html, also specified in [RFC2616].

**End part:** An **End** part MUST be ignored by the server. Any subsequent part SHOULD also be considered to be an **End** part.

**Note** The server SHOULD accept and ignore a **DocInfo/DocData** pair if the URL in the **DOCINFO** is empty. Clients SHOULD avoid doing this because it wastes bandwidth.

If the "atomic" **PUT-OPTION-VAL** is specified as defined in **Put-Option** (section [2.2.2.2.18](#)), the server either succeeds in storing all the documents or does not store any of them. If the client does not request the "atomic" option, or if the server does not honor the option, and if the server is unable to store a document, then documents in the request before the one that failed MUST be stored, and documents after the one that failed MUST NOT be stored.

Tokens

**service\_name:** This parameter is deprecated. See *service\_name* in section [3.1.5.3.1](#).

**put\_option:** A set of flags describing the client's requested behavior. For details, see **Put-Option**.

**time\_tokens:** This parameter uses a **VECTOR-TIME**. Each time the value that is specified in the *time\_tokens* parameter is checked, in addition to values specified through the **vti\_timelastmodified** metakey and `putOption = edit` check. If this parameter is sent, it MUST either be empty (which is equivalent to not sending it) or it MUST contain a TIME entry for each document that will be sent in the remainder of the request. In that case, the server SHOULD check this value in addition to the **vti\_timelastmodified** metakey sent in each request. [<48>](#)

**listFiles:** A **BOOLEAN** value that specifies if the docs return value will be included in the response. The server MUST include the docs return value if, and only if, this parameter is TRUE.

**listLinkInfo:** See section [3.1.5.3.1](#).

**validateWelcomeNames:** For semantics, see section [3.1.5.3.1](#).

URL

FPAuthorScriptUrl

Return Values

The server can return the error codes 0x00090002, 0x0009000E, and 0x0009000F [2.2.2.2.17.1](#).

**docs:** A **VECTOR-DOCINFO** containing information about the saved documents. This value MUST NOT be included in the response if *listFiles* is passed as FALSE.

**error-index:** This **INT** is only returned in error conditions for a single document rather than the transfer in general (for example, because of a time stamp mismatch, a document exists, or a document is checked out). If present, it MUST be the zero-based index of the document that the server was unable to store.



**document:** This **DOC-INFO** MUST be returned if, and only if, **error-index** is also returned. This indicates the document URL and metadata for the document that could not be uploaded.

### 3.1.5.3.13 remove documents

The **remove documents** request is used by the client to delete specific documents or folders from the site.

Tokens

**service\_name:** This parameter is deprecated. See *service\_name* in section [3.1.5.3.1](#).

**url\_list:** A **VECTOR-URL-STRING** list of service-relative URLs that the client wants to be deleted. The server MUST delete the URLs listed here, subject to authorization checks and the time tokens parameter value.

**time\_tokens:** If present and nonempty, the value lists the **vti\_timelastmodified** for the corresponding documents as known by the client. If the **VECTOR-TIME** is empty or the parameter is not present, the server MUST ignore this parameter; otherwise, it MAY refuse to delete documents in which the date does not match the actual **vti\_timelastmodified** as known on the server. [<49>](#)

**validateWelcomeNames:** For semantics, see section 3.1.5.3.1.

URL

FPAuthorScriptUrl

Return Values

The server can return the error code 0x00090002 [2.2.2.2.17.1](#).

**message:** A **STRING** description of the action taken by the server. This is intended for debugging and SHOULD be ignored by the client.

**removed\_docs:** A **VECTOR-DOCINFO** containing the name and metadata for the documents that were removed. The server SHOULD send empty **METADICTs** in this value. [<50>](#)

**removed\_dirs:** A **VECTOR-DOCINFO** containing the name and metadata for the folders that were removed. The server SHOULD send empty **METADICTs** in this return value. [<51>](#)

**failed\_docs:** A **VECTOR-DOCINFO** specifying the name and metadata for the documents that failed to be removed. The server MUST respond with a (potentially empty) list of documents that could not be removed.

**failed\_dirs:** A **VECTOR-URL-DIRECTORY** specifying the name and metadata for the folders that failed to be removed. The server MUST respond with a (potentially empty) list of folders that could not be removed.

### 3.1.5.3.14 server version

The **server version** request is to be used by the client to request the version of the server extensions in use on the site server [<52>](#).

Tokens

**None:** The argument list for this request SHOULD be empty. The server MUST ignore any parameters sent.

URL

FPShtmlScriptUrl

## Return Values

**server version:** A **VERSION** (section [2.2.2.2.9](#)) specifying the current version of the server (not the effective protocol version). The server **MUST** respond with its actual version, which might be larger than the effective protocol version in the **PROTOCOL-VERSION-STRING** built in to all the FrontPage Server Extensions Remote Protocol responses, as described in section 2.2.2.2.9.

**source control:** An **INT** indicates whether the server supports the **checkout document** (section [3.1.5.3.2](#)) and **uncheckout document** (section [3.1.5.3.15](#)) requests. This value **MUST** equal 0 if the server does not support these requests; otherwise, this value **MUST** equal 1. Nonzero values other than 1 are reserved, but the client **MUST** interpret any nonzero value as if it were the value 1.

As with other methods, the effective protocol version negotiated by using the mechanism defined in section [3.1.3.2](#) **SHOULD** be returned in the **METHOD-KEY-VALUE** element of the response.

### 3.1.5.3.15 uncheckout document

The **uncheckout document** request is used by the client to reverse a long-term checkout of a file from source control. If the file has changed since it was checked out, those changes are reverted. This request is also used to release a short-term checkout, in which case changes are not reverted. Because clients conforming to the FrontPage Server Extensions Remote Protocol **MUST NOT** assume the server supports long-term checkouts, only the latter use is pertinent.

#### Tokens

**service\_name:** This parameter is deprecated. See *service\_name* in section [3.1.5.3.1](#).

**document\_name:** A **URL-STRING** specifying the service-relative path of the current document.

**force:** A **BOOLEAN** value that specifies whether the server reverses the checkout of a file by another user. Clients conforming to the FrontPage Server Extensions Remote Protocol **MUST NOT** send this parameter as TRUE. The server **MAY** ignore this value. If the server implements this functionality, it **SHOULD** do client authorization checks for permissions to perform this action and ignore the parameter if those checks fail.

**time\_checked\_out:** A **TIME** indicating the client's record of the time and date at which the file was last checked out. The server **MAY** refuse to revert a checkout if the time does not match the server's record of the time the file was checked out.

**rlsshortterm:** A **BOOLEAN** value indicates if the client wants to release a short-term checkout or a long-term checkout. If TRUE, the server **MUST** release the lock; otherwise, the server **SHOULD** release any long-term checkout the client has acquired. Clients conforming to the FrontPage Server Extensions Remote Protocol **MUST NOT** assume the server supports long-term checkout and thus **MUST** send TRUE for this parameter. The server can return an appropriate error if the client does not have the kind of checkout it is trying to undo.

**validateWelcomeNames:** For semantics, see section 3.1.5.3.1.

#### URL

FPAuthorScriptUrl

## Return Values

The server can return the error code 0x0009000F [2.2.2.2.17.1](#).

**meta\_info:** The **METADICT** (section [2.2.2.2.11](#)) information about the document that has been unchecked out.

### 3.1.5.3.16 url to web url



The **url to web url** request is used by the client to decompose the URL into the server-relative URL of the site that contains the URL and the server-relative URL for the file within the site.

Tokens

**service\_name:** This parameter is deprecated. See *service\_name* in section [3.1.5.3.1](#).

**url:** A **URL-STRING** specifying the server-relative URL of the object that the client wants to decompose.

**flags:** The flags parameter. An **INT** MUST be ignored by the server but MAY be sent by the client and SHOULD equal zero.

URL

FPShtmlScriptUrl

Return Values

**webUrl:** A **URL-STRING** specifying the server-relative URL of the site.

**fileUrl:** A **URL-STRING** specifying the service-relative URL of the file.

### 3.1.5.3.17 SharePoint Team Services

SharePoint Team Services enables file sharing and discussions among members of a group. SharePoint Team Services also adds collaboration and sharing capabilities to a site. These capabilities allow teams to share and maintain information without the need for central administration of a site. SharePoint Team Services authoring and administration of sites complements the FrontPage Server Extensions Remote Protocol.

As with the FrontPage Server Extensions Remote Protocol, SharePoint methods are remote procedures that are transported in an HTTP request to a server. However, rather than a transport with a POST request, this SHOULD be sent as a **GET** or a **HEAD** command with the standard application/x-www-form-urlencoded content type as described in HTML 2.0, [\[RFC1866\]](#) sections 8.2.1 and 8.2.2.

#### 3.1.5.3.17.1 dialogview

The **dialogview** request is used by a client to obtain an HTML-rendered view of the document libraries within a site, a specific **document library**, or a folder within a document library, which is used in a dialog box for opening or saving files; or opens the property form that is used when saving a file.

Tokens

**dialogview:** Specifies the view to display. Possible values include the following. [<53>](#)

Mask	Meaning
FileOpen	The Open dialog box. The server MUST return an HTML document formatted to render a file open dialog; it SHOULD NOT encourage users to select documents that do not exist.
FileSave	The Save dialog box. The server MUST return an HTML document formatted to render a file save dialog; it SHOULD allow for picking an existing document or creating a new one.
SaveForm	The Property form. To view the property form used when saving a file, the location parameter specifies the file in the document library. Clients conforming to the FrontPage Server Extensions Remote Protocol MUST NOT use this value for the dialogview parameter. The server MAY treat this as any other nonsupported value.

Mask	Meaning
All other values	The server MUST return an HTTP 410 (GONE) response.

**location:** Specifies the site-relative URL of a document library or of a folder or file within a document library. If SaveForm is specified in **dialogview**, the URL for the location parameter MUST point to the file being saved. If the location parameter is passed without specifying a value, this method SHOULD display a view of all the document libraries in the site.

**FileDialogFilterValue:** Specifies the file type extension by which to filter the view in the file dialog box (for example, \*.doc, \*.txt, or \*.htm).

URL

TPScriptURL

Return Values

**Success:** Displays the view of a document library or folder that is used in a file dialog box, in all document libraries in the site, or in the form used to specify document properties when saving a file.

**Error:** If the server requires further authentication or authorization, it MUST trigger the HTTP layer to return a 401 message, access denied. The HTTP layer on the client and server then manages authenticating the user. Otherwise, if the request has the **dialogview** parameter but has some other error (for example, if the location or **dialogview** parameters are not valid), the server MUST send a 410 GONE response. The client conforming to the subset of the protocol described here MUST send the **dialogview** parameter to any request to TPsScriptURL.

If the result is not an error, the server's response MUST contain an HTML table whose identifier is "FileDialogView". Each file that the server wants to show the client MUST be represented as a TR element in the table that has an identifier containing the complete URL of the file to be represented and has an expando property fileattribute="file". The server MUST repeat this for each folder, except that it should have the fileattribute="folder" expando property.

If the result is an error, the HTTP return value MUST be 410 (GONE), and the server MAY add contents that, if present, SHOULD be an HTML-formatted error message for display to an end user.

The client SHOULD render the HTML returned by the server, detect mouse clicks and other selection gestures that it wants to respond to, and use the HTML document object model to determine the TR on which the selection occurred. If the user selects a folder, the client SHOULD make a new **dialogview** request with the location specified by the folder. If the user selects a file, the client SHOULD treat that as the file the user wants to open or save over.

If the client gets an error, it MAY fall back to an alternate dialog method (potentially populated by the **list documents** (section [3.1.5.3.8](#)) method) or present the error to the user.

### 3.1.6 Timer Events

#### 3.1.6.1 Short-Term Checkout Timer Expiry

When the short-term checkout timer on a document expires, the server MUST clear the short-term checkout on the document. This will leave the document open for editing by any user. If the client wants to prevent short-term checkout from expiring, the client MUST send another **checkout document** (section [3.1.5.3.2](#)) request for the same document before the checkout has expired.

### 3.1.7 Other Local Events

None.

Preliminary

## 4 Protocol Examples

The following sections specify protocol examples.

### 4.1 Example Entry Point for FrontPage Server Extensions

#### 4.1.1 First Determining the Entry Point

Each method specification gives an entry point that corresponds to one of four URLs that are returned when a client performs an HTTP GET on `_vti_inf.html`. This section details how to determine the URL to POST given the known entry point.

##### 4.1.1.1 First Entry Point Example

If the client wants to call the **server version** method (section [3.1.5.3.14](#)), it needs to use the `FPShtmlScriptUrl` entry point. For details, see section [3.1.3](#). If it is making this call against the root of the server, the URL is as follows.

```
/_vti_bin/shtml.dll/_vti_rpc
```

If the client is making a call against a subsite located at `/search/`, the URL is as follows.

```
/search/_vti_bin/shtml.dll/_vti_rpc.
```

##### 4.1.1.2 Second Entry Point Example

If the client wants to call the **open service** method (section [3.1.5.3.10](#)), it needs to use the `FPAuthorScriptURL` entry point.

```
POST
/site_url/_vti_bin/_vti_aut/author.dll HTTP/1.0
.
.
method=open+service:6.0.n.nnnn
```

The first line shows a post to `/site_url/_vti_bin/_vti_aut/author.dll`, which is the `FPAuthorScriptURL` entry point for the subsite called 'site\_url'.

#### 4.1.2 SharePoint Services Entry Note

The `TPScriptUrl` field is only present on servers that have SharePoint Services (or SharePoint Team Services) enabled. It is a service-relative URL and refers to the URL to POST for Windows SharePoint Services methods. For details, see section [3.1.5.3.17](#).

### 4.2 Example Trace for Posts

The following is an example trace for common operations that are performed on the client. The example shows operations such as opening a web folder, copying and pasting to (or from) a web folder, opening a file, saving changes in a file, and closing a file.

**Note** In the example, WWW-Authenticate headers, as described in [\[RFC2616\]](#) section 14.47, have been removed, "DOMAIN1" is a placeholder for **domain name**, "testuser" is a placeholder for user name, and "fpseserver" is a placeholder for an actual server name. All the lines, except for any text files that are uploaded, are to be terminated by "\n" rather than the "\r\n", which is standard on Windows operating systems.

**Note** Many of the following examples use URL encoding as described in [\[RFC3986\]](#) section 2.1.

## 4.2.1 Querying for URLs to Post

Any user action requiring the client to interact with the server through FrontPage Server Extensions requires the client to know what URLs to POST. Consequently, any FrontPage Server Extensions Remote Protocol conversation will begin with the client posting an HTTP GET to /\_vti\_inf.html to determine the URLs of author.dll, shtml.dll (for details, see section [3.1.3.2.1](#)), and so on.

### 4.2.1.1 Client HTTP GET Request for \_vti\_inf.html

```
GET /_vti_inf.html HTTP/1.1
Date: Thu, 08 June 2006 21:39:52 GMT
MIME-Version: 1.0
Accept: */*
User-Agent: Mozilla/4.0 (compatible; MS FrontPage 12.0)
Host: fpseserver
Accept: auth/sicily
Content-Length: 0
Connection: Keep-Alive
Cache-Control: no-cache
```

### 4.2.1.2 Server HTTP Response

```
HTTP/1.1 200 OK
Content-Length: 1754
Content-Type: text/html
Last-Modified: Thu, 08 June 2006 21:04:13 GMT
Accept-Ranges: bytes
ETag: "2f7ad4cbe6fc61:33a"
Server: Microsoft-IIS/6.0
X-Powered-By: ASP.NET
MicrosoftOfficeWebServer: 5.0_Pub
Date: Thu, 08 June 2006 21:39:42 GMT

<html>

<head>
<meta http-equiv="Content-Type"
content="text/html; charset=iso-8859-1">
<title> FrontPage Configuration Information </title>
</head>

<body>
<!-- _vti_inf.html version 0.100>
<!--
This file contains important information used by the FrontPage client
(the FrontPage Explorer and FrontPage Editor) to communicate with the
FrontPage server extensions installed on this web server.

The values below are automatically set by FrontPage at installation.
Normally, you do not need to modify these values, but in case
you do, the parameters are as follows:

'FPShtmlScriptUrl', 'FPAuthorScriptUrl', and 'FPAdminScriptUrl'
specify the relative urls for the scripts that FrontPage uses for
```

remote authoring. These values SHOULD NOT be changed.

```
'FPVersion' identifies the version of the FrontPage Server Extensions
installed, and SHOULD NOT be changed.
--><!-- FrontPage Configuration Information
  FPVersion="5.0.2.6738"
  FPShtmlScriptUrl="_vti_bin/shtml.dll/_vti_rpc"
  FPAuthorScriptUrl="_vti_bin/_vti_aut/author.dll"
  FPAdminScriptUrl="_vti_bin/_vti_adm/admin.dll"
  TPScriptUrl="_vti_bin/owssvr.dll"
-->
<p><!--webbot bot="PurpleText"
preview="This page is placed into the root directory of your FrontPage
web when FrontPage is installed. It contains information used by the
FrontPage client to communicate with the FrontPage Server Extensions
installed on this web server. You SHOULD NOT delete this file."
--></p>

<h1>FrontPage Configuration Information </h1>

<p>In the HTML comments, this page contains configuration
information that the FrontPage Explorer and FrontPage Editor need to
communicate with the FrontPage Server Extensions installed on
this web server. Do not delete this page.</p>
</body>
</html>
```

## 4.2.2 Opening a Web Folder

This example uses the **server version** request (section [3.1.5.3.14](#)) to query the server's version and uses the **list documents** request (section [3.1.5.3.8](#)) to enumerate the documents in the root of the server. This part of the example corresponds to opening a folder as a web folder in a web browser.

### 4.2.2.1 Client Calls server version Method

```
POST /_vti_bin/shtml.dll/_vti_rpc HTTP/1.1
Date: Thu, 08 June 2006 21:39:52 GMT
MIME-Version: 1.0
User-Agent: MSFrontPage/12.0
Host: fpseserver
Accept: auth/sicily
Content-Length: 42
Content-Type: application/x-www-form-urlencoded
X-Vermeer-Content-Type: application/x-www-form-urlencoded
Connection: Keep-Alive
Cache-Control: no-cache

method=server+version%3a12%2e0%2e0%2e3417
```

### 4.2.2.2 Server Responds to server version Method

```
HTTP/1.1 200 OK
Connection: close
Date: Thu, 08 June 2006 21:39:42 GMT
Server: Microsoft-IIS/6.0
X-Powered-By: ASP.NET
MicrosoftOfficeWebServer: 5.0_Pub
Content-type: application/x-vermeer-rpc

<html><head><title>vermeer RPC packet</title></head>
<body>
<p>method=server version:5.0.2.6738
```

```
<p>server version=
<ul>
<li>major ver=5
<li>minor ver=0
<li>phase ver=2
<li>ver incr=6738
</ul>
<p>source control=1
</body>
</html>
```

#### 4.2.2.3 Client Calls list documents Method

```
POST / vti bin/ vti aut/author.dll HTTP/1.1
Date: Thu, 08 June 2006 21:40:01 GMT
MIME-Version: 1.0
User-Agent: MSFrontPage/12.0
Host: fpseserver
Accept: auth/sicily
Content-Length: 336
Content-Type: application/x-www-form-urlencoded
X-Vermeer-Content-Type: application/x-www-form-urlencoded
Connection: Keep-Alive
Cache-Control: no-cache
```

```
method=list+documents%3a5%2e0%2e2%2e6738&service%5fname=
&listHiddenDocs=false&listExplorerDocs=false&listRecurse=
false&listFiles=true&listFolders=true&listLinkInfo=
false&listIncludeParent=true&listDerived=false&listBorders=
false&listChildWebs=true&listThickets=true&initialUrl=&folderList=
%5b%3bTW%7c08+June+2006+21%3a04%3a14+%2d0000%5d
```

#### 4.2.2.4 Server Responds to list documents Method

```
HTTP/1.1 200 OK
Connection: close
Date: Thu, 08 June 2006 21:39:51 GMT
Server: Microsoft-IIS/6.0
X-Powered-By: ASP.NET
MicrosoftOfficeWebServer: 5.0_Pub
Content-type: application/x-vermeer-rpc
```

```
<html><head><title>vermeer RPC packet</title></head>
<body>
<p>method=list documents:5.0.2.6738
<p>document_list=
<ul>
<ul>
<li>document_name=Thicket test.htm
<li>meta_info=
<ul>
<li>vti_author
<li>SR|DOMAIN1&#92;testuser
<li>vti_modifiedby
<li>SR|DOMAIN1&#92;testuser
<li>vti_timelastmodified
<li>TR|08 June 2006 21:28:52 -0000
<li>vti_timecreated
<li>TR|08 June 2006 21:27:31 -0000
<li>vti_title
<li>SW|Test
<li>vti_nexttolasttimemodified
<li>TR|08 June 2006 21:28:39 -0000
<li>vti_filesize
```

```
<>IR|930
<li>vti_metatags
<li>VR|HTTP-EQUIV&#61;Content-Type text/html&#59;&#92; charset&#61;
windows-1252 Generator Microsoft&#92; Word&#92; 12&#92; (filtered)
<li>vti_charset
<li>SR|windows-1252
<li>vti_generator
<li>SR|Microsoft Word 12 (filtered)
<li>vti_timelastwritten
<li>TX|08 June 2006 21:28:52 -0000
</ul>
</ul>
</ul>
<p>urldirs=
<ul>
<ul>
<li>url=
<li>meta_info=
<ul>
<li>vti_isexecutable
<li>BR|false
<li>vti_isbrowsable
<li>BR|true
<li>vti_isscriptable
<li>BR|true
<li>vti_hassubdirs
<li>BR|true
<li>vti_dirlateststamp
<li>TW|08 June 2006 21:28:52 -0000
</ulul>
</ul>
<ul>
<li>url=aspnet_client
<li>meta info=
<ul>
<li>vti_isexecutable
<li>BR|false
<li>vti_isbrowsable
<li>BR|true
<li>vti_isscriptable
<li>BR|false
<li>vti_hassubdirs
<li>BR|true
</ul>
</ul>
<ul>
<li>url=images
<li>meta info=
<ul>
<li>vti_isexecutable
<li>BR|false
<li>vti_isbrowsable
<li>BR|true
<li>vti_isscriptable
<li>BR|true
<li>vti_hassubdirs
<li>BR|false
</ul>
</ul>
<ul>
<li>url=Thicket Test_files
<li>meta_info=
<ul>
<li>vti_isexecutable
<li>BR|false
<li>vti_isbrowsable
<li>BR|true
<li>vti_isscriptable
<li>BR|true
</ul>
</ul>
```



```

<li>vti_hassubdirs
<li>BR|false
</ul>
</ul>
<ul>
<li>url= private
<li>meta_info=
<ul>
<li>vti_isexecutable
<li>BR|false
<li>vti_isbrowsable
<li>BR|false
<li>vti_isscriptable
<li>BR|false
<li>vti_hassubdirs
<li>BR|false
</ul>
</ul>
</ul>
</ul>
</body>
</html>

```

### 4.2.3 Copying a File to a Web Folder

This example uses the **url to web url** request (section [3.1.5.3.16](#)) to discover where a file (in this case, /small.txt) belongs and uses the **put document** request (section [3.1.5.3.11](#)) to upload it. This part of the example corresponds to a copy/paste operation into the web folder.

#### 4.2.3.1 Client Calls url to web url Method

```

POST /_vti_bin/shtml.dll/_vti_rpc HTTP/1.1
Date: Thu, 08 June 2006 21:40:17 GMT
MIME-Version: 1.0
User-Agent: MSFrontPage/12.0
Host: fpseserver
Accept: auth/sicily
Content-Length: 68
Content-Type: application/x-www-form-urlencoded
X-Vermeer-Content-Type: application/x-www-form-urlencoded
Connection: Keep-Alive
Cache-Control: no-cache

method=url+to+web+url%3a5%2e0%2e2%2e6738&url=%2fsmall%2etxt&flags=0

```

#### 4.2.3.2 Server Responds to url to web url Method

```

HTTP/1.1 200 OK
Connection: close
Date: Thu, 08 June 2006 21:40:07 GMT
Server: Microsoft-IIS/6.0
X-Powered-By: ASP.NET
MicrosoftOfficeWebServer: 5.0 Pub
Content-type: application/x-vermeer-rpc

<html><head><title>vermeer RPC packet</title></head>
<body>
<p>method=url to web url:5.0.2.6738
<p>webUrl=/
<p>fileUrl=small.txt
</body>

```

</html>

### 4.2.3.3 Client Calls put document Method

```
POST /_vti_bin/_vti_aut/author.dll HTTP/1.1
Date: Thu, 08 June 2006 21:40:17 GMT
MIME-Version: 1.0
User-Agent: MSFrontPage/12.0
Host: fpseserver
Accept: auth/sicily
Content-Length: 224
Content-Type: application/x-vermeer-urlencoded
X-Vermeer-Content-Type: application/x-vermeer-urlencoded
Connection: Keep-Alive
Cache-Control: no-cache

method=put+document%3a5%2e0%2e2%2e6738&service%5fname=&document=%5b
document%5fname%3dsmall%2etxt%3bmeta%5finfo%3d%5b%5d%5d&put%5foption
=edit%2atomic%2cthicket&comment=&keep%5fchecked%5fout=false
This is a text file.
```

### 4.2.3.4 Server Responds to put document Method



```
HTTP/1.1 200 OK
Connection: close
Date: Thu, 08 June 2006 21:40:07 GMT
Server: Microsoft-IIS/6.0
X-Powered-By: ASP.NET
MicrosoftOfficeWebServer: 5.0_Pub
Content-type: application/x-vermeer-rpc

<html><head><title>vermeer RPC packet</title></head>
<body>
<p>method=put document:5.0.2.6738
<p>message=successfully put document 'small.txt' as 'small.txt'
<p>document=
<ul>
<li>document name=small.txt
<li>meta_info=
<ul>
<li>vti_author
<li>SR|DOMAIN1&#92;testuser
<li>vti_modifiedby
<li>SR|DOMAIN1&#92;testuser
<li>vti_timelastmodified
<li>TR|08 June 2006 21:40:07 -0000
<li>vti_timecreated
<li>TR|08 June 2006 21:40:07 -0000
<li>vti_filesize
<li>IR|28
<li>vti_backlinkinfo
<li>VX|
<li>vti_timelastwritten
<li>TX|08 June 2006 21:40:07 -0000
</ul>
</ul>
</body>
</html>
```

## 4.2.4 Downloading a File from a Web Folder

This example uses the **get document** request (section [3.1.5.3.6](#)) to download the file. This part of the example corresponds to a copy/paste operation from the web folder.

### 4.2.4.1 Client Calls get document Method

```
POST / vti bin/ vti aut/author.dll HTTP/1.1
Date: Thu, 08 June 2006 21:40:30 GMT
MIME-Version: 1.0
User-Agent: MSFrontPage/12.0
Host: fpseserver
Accept: auth/sicily
Content-Length: 162
Content-Type: application/x-www-form-urlencoded
X-Vermeer-Content-Type: application/x-www-form-urlencoded
Connection: Keep-Alive
Cache-Control: no-cache

method=get+document%3a5%2e0%2e2%2e6738&service%5fname=&document
%5fname=small%2etxt&old%5ftheme%5fhtml=false&force=true&get
%5foption=none&doc%5fversion=&timeout=0
```

### 4.2.4.2 Server Responds to get document Method

```
HTTP/1.1 200 OK
Connection: close
Date: Thu, 08 June 2006 21:40:20 GMT
Server: Microsoft-IIS/6.0
X-Powered-By: ASP.NET
MicrosoftOfficeWebServer: 5.0_Pub
Content-type: application/x-vermeer-rpc

<html><head><title>vermeer RPC packet</title></head>
<body>
<p>method=get document:5.0.2.6738
<p>message=successfully retrieved document 'small.txt' from
'small.txt'
<p>document=
<ul>
<li>document_name=small.txt
<li>meta_info=
<ul>
<li>vti author
<li>SR|DOMAIN1&#92;testuser
<li>vti modifiedby
<li>SR|DOMAIN1&#92;testuser
<li>vti timelastmodified
<li>TR|08 June 2006 21:40:07 -0000
<li>vti timecreated
<li>TR|08 June 2006 21:40:07 -0000
<li>vti filesize
<li>IR|28
<li>vti_backlinkinfo
<li>VX|
<li>vti timelastwritten
<li>TX|08 June 2006 21:40:07 -0000
</ul>
</ul>
</body>
</html>
This is a text file.
```

## 4.2.5 Opening a File in a Web Folder

When opening a file, as seen in the next part of the example, a client application calls the **get document** request (section 3.1.5.3.6) with a time-out of a 10-minute short-term checkout, as can be seen at the end of the **get document** request, in the section that follows. This guarantees that the document cannot be modified by other users while it is open in the client application.

### 4.2.5.1 Client Calls get document Method

```
POST /_vti_bin/_vti_aut/author.dll HTTP/1.1
Date: Thu, 08 June 2006 21:41:45 GMT
MIME-Version: 1.0
User-Agent: MSFrontPage/12.0
Host: fpseserver
Accept: auth/sicily
Content-Length: 175
Content-Type: application/x-www-form-urlencoded
X-Vermeer-Content-Type: application/x-www-form-urlencoded
Connection: Keep-Alive
Cache-Control: no-cache

method=get+document%3a5%2e0%2e2%2e6738&service%5fname=&document%5f
name=small%2etxt&old%5ftheme%5fhtml=false&force=false&get%5foption=
chkoutExclusive&doc%5fversion=&timeout=10
```

### 4.2.5.2 Server Responds to get document Method

```
HTTP/1.1 200 OK
Connection: close
Date: Thu, 08 June 2006 21:41:35 GMT
Server: Microsoft-IIS/6.0
X-Powered-By: ASP.NET
MicrosoftOfficeWebServer: 5.0 Pub
Content-type: application/x-vermeer-rpc

<html><head><title>vermeer RPC packet</title></head>
<body>
<p>method=get document:5.0.2.6738
<p>message=successfully retrieved document 'small.txt' from
'small.txt'
<p>document=
<ul>
<li>document_name=small.txt
<li>meta info=
<ul>
<li>vti author
<li>SR|DOMAIN1&#92;testuser
<li>vti_modifiedby
<li>SR|DOMAIN1&#92;testuser
<li>vti_timelastmodified
<li>TR|08 June 2006 21:40:07 -0000
<li>vti_timecreated
<li>TR|08 June 2006 21:40:07 -0000
<li>vti_filesize
<li>IR|28
<li>vti_backlinkinfo
<li>VX|
<li>vti_sourcecontrollockexpires
<li>TR|08 June 2006 21:51:35 -0000
<li>vti_sourcecontrolcheckedoutby
<li>SR|DOMAIN1&#92;testuser
<li>vti_sourcecontrolmultiuserchkoutby
<li>VR|DOMAIN1&#92;&#92;testuser
<li>vti_timelastwritten
<li>TX|08 June 2006 21:40:07 -0000
```

```
</ul>
</ul>
</body>
</html>
This is a small text file.
```

## 4.2.6 Saving a File to a Web Folder

Changing and saving a file, as seen in the next part of the example, requires calling the **put document** request (section [3.1.5.3.11](#)).

### 4.2.6.1 Client Calls put document Method

```
POST /_vti_bin/_vti_aut/author.dll HTTP/1.1
Date: Thu, 08 June 2006 21:41:57 GMT
MIME-Version: 1.0
User-Agent: MSFrontPage/12.0
Host: fpseserver
Accept: auth/sicily
Content-Length: 290
Content-Type: application/x-vermeer-urlencoded
X-Vermeer-Content-Type: application/x-vermeer-urlencoded
Connection: Keep-Alive
Cache-Control: no-cache

method=put+document%3a5%2e0%2e2%2e6738&service%5fname=&document=%5
bdocument%5fname%3dsmall%2etxt%3bmeta%5finfo%3d%5bvti%5ftimelastmodi
fied%3bTW%7c08+June+2006+21%3a40%3a07+%2d0000%5d%5d&put%5foption=edi
t&comment=&keep%5fchecked%5fout=false
This is a small text file. Now, a little bigger.
```

### 4.2.6.2 Server Responds to put document Method

```
HTTP/1.1 200 OK
Connection: close
Date: Thu, 08 June 2006 21:41:47 GMT
Server: Microsoft-IIS/6.0
X-Powered-By: ASP.NET
MicrosoftOfficeWebServer: 5.0_Pub
Content-type: application/x-vermeer-rpc

<html><head><title>vermeer RPC packet</title></head>
<body>
<p>method=put document:5.0.2.6738
<p>message=successfully put document 'small.txt' as 'small.txt'
<p>document=
<ul>
<li>document_name=small.txt
<li>meta_info=
<ul>
<li>vti author
<li>SR|DOMAIN1&#92;testuser
<li>vti modifiedby
<li>SR|DOMAIN1&#92;testuser
<li>vti_timelastmodified
<li>TR|08 June 2006 21:41:47 -0000
<li>vti timecreated
<li>TR|08 June 2006 21:40:07 -0000
<li>vti_backlinkinfo
<li>VX|
<li>vti_sourcecontrollockexpires
```

```

<li>TR|08 June 2006 21:51:35 -0000
<li>vti_sourcecontrolcheckedoutby
<li>SR|DOMAIN1&#92;testuser
<li>vti_sourcecontrolmultiuserchkoutby
<li>VR|DOMAIN1&#92;&#92;testuser
<li>vti_nexttolasttimemodified
<li>TW|08 June 2006 21:40:07 -0000
<li>vti_filesize
<li>IR|51
<li>vti_timelastwritten
<li>TX|08 June 2006 21:41:47 -0000
</ul>
</ul>
</body>
</html>

```

## 4.2.7 Closing a File

Finally, this example shows what happens when the file is closed in the client application, which requires a call to the **uncheckout document** request (section [3.1.5.3.15](#)) to release the lock. Note that the example does not illustrate the effects of waiting 10 minutes to cause the client application to renew the short-term checkout, which would have caused a **checkout document** request (section [3.1.5.3.2](#)) to be sent with a timeout parameter.

### 4.2.7.1 Calls uncheckout document Method

```

POST /_vti_bin/_vti_aut/author.dll HTTP/1.1
Date: Thu, 08 June 2006 21:41:59 GMT
MIME-Version: 1.0
User-Agent: MSFrontPage/12.0
Host: fpseserver
Accept: auth/sicily
Content-Length: 120
Content-Type: application/x-www-form-urlencoded
X-Vermeer-Content-Type: application/x-www-form-urlencoded
Connection: Keep-Alive
Cache-Control: no-cache

method=uncheckout+document%3a5%2e0%2e2%2e6738&service%5fname=
&document%5fname=small%2etxt&force=false&rlsshortterm=true

```

### 4.2.7.2 Server Responds to uncheckout document Method

```

HTTP/1.1 200 OK
Connection: close
Date: Thu, 08 June 2006 21:41:49 GMT
Server: Microsoft-IIS/6.0
X-Powered-By: ASP.NET
MicrosoftOfficeWebServer: 5.0_Pub
Content-type: application/x-vermeer-rpc

<html><head><title>vermeer RPC packet</title></head>
<body>
<p>method=uncheckout document:5.0.2.6738
<p>meta_info=
<ul>
<li>vti_author
<li>SR|DOMAIN1&#92;testuser
<li>vti_modifiedby
<li>SR|DOMAIN1&#92;testuser
<li>vti_timelastmodified
<li>TR|08 June 2006 21:41:47 -0000

```

```
<li>vti_timecreated
<li>TR|08 June 2006 21:40:07 -0000
<li>vti_backlinkinfo
<li>VX|
<li>vti_nexttolasttimemodified
<li>TW|08 June 2006 21:40:07 -0000
<li>vti_filesize
<li>IR|51
<li>vti_timelastwritten
<li>TX|08 June 2006 21:41:47 -0000
</ul>
</body>
</html>
```

Preliminary

## 5 Security

### 5.1 Security Considerations for Implementers

#### 5.1.1 One-Click Attacks

It is possible for an attacker to lure a user to a malicious page, such as by sending the user a URL in email. When the user visits the malicious page, that page can perform a silent POST to the server. Because the FrontPage Server Extensions Remote Protocol is merely an HTTP POST, this means the attacker can lure the user into performing any FrontPage Server Extensions Remote Protocol operation against any server. This sort of attack is termed a one-click attack.

To prevent this type of attack, servers can require all incoming FrontPage Server Extensions Remote Protocol requests to have the HTTP header X-Vermeer-Content-Type, as described in [RFC2616](#) section 14.17. Because normal web browsers do not send this header, requiring it effectively prevents users from browsing to a page that can execute a silent FrontPage Server Extensions Remote Protocol method call. It is strongly recommended that all implementations of the FrontPage Server Extensions Remote Protocol require this header to prevent one-click attacks.

#### 5.1.2 Permissions for Entry Points

Servers have traditionally restricted access to methods to certain classes of users. Although this restriction is not required by the FrontPage Server Extensions Remote Protocol, it is recommended because some methods, such as **remove documents** (section [3.1.5.3.13](#)) can be damaging to user data.

The FrontPage Server Extensions Remote Protocol has traditionally determined which users can call which methods based on the method entry points. Methods whose entry point is FPShtmlScriptUrl can usually be called by any user. Methods with the FPAuthorScriptURL entry point are restricted to users who can read or write documents on the server. The reason for this model is that methods such as **remove documents** (section [3.1.5.3.13](#)) are considered more dangerous than **server version** (section [3.1.5.3.14](#)). As such, restricting unauthenticated users from even calling the more powerful methods provides an extra layer of security.

Implementers of the FrontPage Server Extensions Remote Protocol are free to restrict method entry point security if they choose to, or they can rely on the object permissions discussed as follows.

#### 5.1.3 Permissions for Objects

As with most file systems, FrontPage Server Extensions Remote Protocol objects can have security. The granularity of this security is up to the server implementers. Windows implementations of the FrontPage Server Extensions Remote Protocol provide the capability to granularly control read access and write access on files, folders, and services. On a secured server, each method call checks the appropriate rights before executing. If the user does not have sufficient rights, the implementation then triggers the HTTP layer to return a 401 message, access denied. The HTTP layer on the client and server then manages authenticating the user, if that user does in fact have permissions.

### 5.2 Index of Security Parameters

None.



## 6 Appendix A: Product Behavior

The information in this specification is applicable to the following Microsoft products or supplemental software. References to product versions include released service packs.

- Microsoft Windows NT
- Windows 2000 Professional operating system
- Windows XP operating system
- Windows Server 2003 operating system
- Windows Vista operating system
- Windows 7 operating system
- Windows Server 2008 R2 operating system
- Windows SharePoint Services 2.0
- Windows SharePoint Services 3.0
- Microsoft SharePoint Foundation 2010
- Microsoft SharePoint Foundation 2013
- Microsoft SharePoint Server 2016 Preview

Exceptions, if any, are noted below. If a service pack or Quick Fix Engineering (QFE) number appears with the product version, behavior changed in that service pack or QFE. The new behavior also applies to subsequent service packs of the product unless otherwise specified. If a product edition appears with the product version, behavior is different in that product edition.

Unless otherwise specified, any statement of optional behavior in this specification that is prescribed using the terms SHOULD or SHOULD NOT implies product behavior in accordance with the SHOULD or SHOULD NOT prescription. Unless otherwise specified, the term MAY implies that the product does not follow the prescription.

[<1> Section 2.2.2.2.17.1](#): Microsoft Windows can present this error to the user as a disk full error.

[<2> Section 2.2.2.2.17.1](#): Windows clients might interpret this as a "not found" error.

[<3> Section 2.2.2.2.17.1](#): Some Windows clients explicitly ignore this error because it can be expected in certain cases; for example, caching operations or "most recently used" lists.

[<4> Section 2.2.2.2.17.1](#): Windows clients generally ignore this error during bulk operations. This error is also generally ignored when removing files.

[<5> Section 2.2.2.2.17.1](#): Windows will display an informational message rather than an error in this case.

[<6> Section 2.2.2.2.18](#): The FrontPage Server Extensions Remote Protocol versions 6.0 and 12.0 ignore this parameter; versions 4.0 and 5.0 do not.

[<7> Section 2.2.2.2.18](#): The FrontPage Server Extensions Remote Protocol versions 6.0 and 12.0 do not ignore this parameter; all other versions ignore it.

[<8> Section 2.2.2.2.18](#): The FrontPage Server Extensions Remote Protocol versions 6.0 and 12.0 accept this parameter and require the requesting user to be a site administrator.

<9> [Section 2.2.2.2.18](#): The FrontPage Server Extensions Remote Protocol versions 4.0 and 5.0 accept this parameter if source control is enabled.

<10> [Section 2.2.2.2.19](#): The FrontPage Server Extensions: Website Management protocol versions 4.0 and 5.0 accept this parameter.

<11> [Section 2.2.4.5](#): Version 5.0 and 12.0 servers do not include **vti\_dirlateststamp** (section [2.2.4.5](#)) key for folders in create **Url-Directory** (section [2.2.2.2.16](#)) and **remove documents** (section [3.1.5.3.13](#)) methods.

<12> [Section 2.2.4.12](#): FrontPage Server Extensions Remote Protocol Server versions 4.0 and 5.0 set a value here that reflects the underlying file system it stores documents in. Versions 6.0 and 12.0 always send 1 for this value.

<13> [Section 2.2.4.13](#): The Windows client uses this metadata to avoid fetching the content of the file just to discover metatags with NAME="progid" and NAME="generator"; these are used to display icons for HTML files and to select an appropriate editor.

<14> [Section 2.2.4.14](#): The FrontPage Server Extensions Remote Protocol version 5.0 does not return this key.

<15> [Section 2.2.4.16](#): The FrontPage Server Extensions Remote Protocol version 5.0 does not include **vti\_sourcecontroltimecheckedout** (section [2.2.4.16](#)) metadata in the return values, when using the **checkout document** (section [3.1.5.3.2](#)) method or **get document** (section [3.1.5.3.6](#)) method to perform a short-term checkout.

<16> [Section 2.2.4.17](#): The FrontPage Server Extensions Remote Protocol version 5.0 doesn't return **vti\_thicketdir** (section [2.2.4.17](#)) as a **BOOLEAN** flag for a folder if the folder contains the supporting files for a thicket, but the service-relative URLs of the corresponding files.

<17> [Section 2.2.4.19](#): The FrontPage Server Extensions Remote Protocol version 5.0 does not include this key.

<18> [Section 2.2.4.19](#): Version 5.0 and 12.0 servers do not include **vti\_timecreated** (section [2.2.4.19](#)) key for folders in create **Url-Directory** (section [2.2.2.2.16](#)) and **remove documents** (section [3.1.5.3.13](#)) methods.

<19> [Section 2.2.4.20](#): Version 5.0 and 12.0 servers do not include **vti\_timelastmodified** (section [2.2.4.20](#)) key for folders in create **Url-Directory** (section [2.2.2.2.16](#)) and **remove documents** (section [3.1.5.3.13](#)) methods.

<20> [Section 2.2.4.20](#): The FrontPage Server Extensions Remote Protocol client for versions 4.0, 5.0, 6.0, and 12.0 uses this value when rendering a file's or folder's time last modified.

<21> [Section 2.2.4.21](#): The FrontPage Server Extensions Remote Protocol Server version 5.0 does not include this key for folders. The FrontPage Server Extensions Remote Protocol Server versions 4.0, 6.0, and 12.0 do not include this key. The FrontPage Server Extensions Remote Protocol Client versions 4.0, 5.0, and 6.0 are not sensitive to this key.

<22> [Section 2.2.4.22](#): The FrontPage Server Extensions Remote Protocol versions 5.0 and 12.0 do not return this metakey.

<23> [Section 2.2.4.23](#): FrontPage Server Extensions Remote Protocol Server versions 4.0 and 5.0 do not include this key, versions 6.0 and 12.0 do. FrontPage Server Extensions Remote Protocol Client versions 4.0 and 5.0 only consider information passed to the underlying HTTP authentication mechanism.

<24> [Section 3.1.1.1](#): The FrontPage Server Extensions Remote Protocol versions 4.0 and 5.0 allow users to turn the source control sandbox off; versions 6.0 and 12.0 do not.

<25> [Section 3.1.2.1](#): All Windows operating systems request a short-term checkout length of two minutes. The clients will attempt to renew the short-term checkout 10 seconds before it expires.

<26> [Section 3.1.3.2.1](#): Windows Vista does not perform this GET and instead assumes the values shown in the example in section [3.1.3.2.2](#).

<27> [Section 3.1.5.1](#): The FrontPage Server Extensions Remote Protocol versions 4.0, 5.0, and 12.0 do not fail the request and instead use the normal HTTP Content-Type header. This action has potential security implications (see section [5.1](#)).

<28> [Section 3.1.5.1](#): If the client does not include FrontPage in its User-Agent string Windows Server 2003, or Windows Server 2008 R2 will respond with the HTTP Content-Type as "text/html" and present more simplistic error strings.

<29> [Section 3.1.5.2](#): Versions 4.0, 5.0, 6.0, and 12.0 of the FrontPage Server Extensions Remote Protocol server will treat unknown arguments as a syntax error if the method takes any parameters. For methods that take no parameters, such as **server version** (section [3.1.5.3.14](#)), the FrontPage Server Extensions Remote Protocol server will ignore the parameters.

<30> [Section 3.1.5.2](#): The FrontPage Server Extensions Remote Protocol server versions 5.0, 6.0, and 12.0 will erroneously return a badly formed response message body that is not compliant with [\[RFC2616\]](#) for method calls made without authentication that result in an HTTP 401 error response. FrontPage Server Extensions Remote Protocol server version 4.0 does not have this defect and does not emit a response message body with an HTTP 401 error response.

All of the methods listed in section [3.1.5.3](#) are known to have the defect in FrontPage Server Extensions Remote Protocol server versions 5.0, 6.0, and 12.0 when returning an HTTP 401 response, with the exceptions of **get documents** (section [3.1.5.3.7](#)), **server version** (section [3.1.5.3.14](#)), **url to web url** (section [3.1.5.3.16](#)), and **dialogview** (section [3.1.5.3.17.1](#)).

This is an example of the badly formed message body returned by version 5.0 of FrontPage Server Extensions from a typical method call made without authentication, in this case, "open service".

```
<html dir="ltr">
<HEAD>
<meta http-equiv="Content-Type" content="text/html; charset=utf-8" name="CharsetDefinition">
</HEAD><body ID=idErr><p><H2>You are not authorized to view this page</H2></p>

<p>You do not have permission to view this page using your current user account.<br>
Please try the following:<br>
<li>If you have another user account with a higher level of permission, click <br>
your browser's Back button to try again using that account.
</li><li>If you believe you should be able to view this page, contact the website
administrator.</li></p>

</body></html>
<html><head><title>vermeer RPC packet</title></head>
<body>
<p>method=open service:5.0.2.6738
<p>status=
<ul>
<li>status=917505
<li>osstatus=0
<li>msg=The user 'DOMAIN&#92;username' is not authorized to execute the 'Author Pages'
method.
<li>osmsg=
</ul>
</body>
</html>
```

This is an example of the badly formed message body returned by version 12.0 of the FrontPage Server Extensions Remote Protocol; the result from version 6.0 is identical except for the version number reported in the method=open service line.

```
<html dir="ltr">
<HEAD>
<meta http-equiv="Content-Type" content="text/html; charset=utf-8" name="CharsetDefinition">
</HEAD><body ID=idErr><p><H2>Access denied.</H2></p>

<p>You do not have permission to perform this action or access this resource.</p>

<!-- commentElt Access denied. --></body></html>
<html><head><title>vermeer RPC packet</title></head>
<body>
<p>method=open service:12.0.0.4518
<p>status=
<ul>
<li>status=917556
<li>osstatus=0
<li>msg=You are not authorized to execute this operation.
<li>osmsg=
</ul>
</body>
</html>
```

The response message body created by the FrontPage Server Extensions Remote Protocol server software exhibiting this defect is badly formed due to the presence of two separate <HTML> sections, which can cause unexpected behavior in an insufficiently robust client that attempts to render or otherwise make use of the body.

All existing FrontPage Server Extensions Remote Protocol clients ignore the message body, if any, returned with an HTTP 401 response. Since an update or future version of FrontPage Server Extensions Remote Protocol server might correct this defect, clients MUST ignore the message body.

[<31> Section 3.1.5.3.1](#): The FrontPage Server Extensions Remote Protocol versions 6.0 and 12.0 servers ignore this parameter. Versions 4.0 and 5.0 respond to the parameters with a `rpc_stats` return value with information about how much time the command spent running, waiting, and so on. The information returned is only useful for debugging purposes and is not considered part of the protocol.

[<32> Section 3.1.5.3.2](#): The FrontPage Server Extensions Remote Protocol version 5.0 server does not return error (0x0009000E) if the force bit1 is not set to Refresh short-term checkout, and a short-term checkout exists.

[<33> Section 3.1.5.3.2](#): The FrontPage Server Extensions Remote Protocol versions 5.0 will instead throw a status error stating, "Illegal parameter value for parameter 'timeout'".

[<34> Section 3.1.5.3.4](#): The FrontPage Server Extensions Remote Protocol versions 6.0 and 12.0 do not have the notion of an executable directory. Version 4.0 servers create a server directory with execution set to "Scripts and Executables".

[<35> Section 3.1.5.3.5](#): The FrontPage Server Extensions Remote Protocol server versions 5.0, 6.0 and 12.0 ignore the `listHiddenDocs` parameter value and always return information for hidden documents.

[<36> Section 3.1.5.3.6](#): The FrontPage Server Extensions Remote Protocol version 5.0 returns a status error when `get_option` is "chkoutNonExclusive" and does not checkout the file exclusively.

[<37> Section 3.1.5.3.6](#): The FrontPage Server Extensions Remote Protocol versions 5.0 will instead throw a status error stating, "Illegal parameter value for parameter 'timeout'".

<38> [Section 3.1.5.3.8](#): The FrontPage Server Extensions Remote Protocol server version 12.0 does not return the contents of the shared borders directory when **listBorders** (section [3.1.5.3.8](#)) is true.

<39> [Section 3.1.5.3.8](#): The FrontPage Server Extensions Remote Protocol server version 12.0 includes the child site folders in the **urldirs** return value when **listChildWebs** (section [3.1.5.3.8](#)) is false.

<40> [Section 3.1.5.3.8](#): The FrontPage Server Extensions Remote Protocol clients send **listDerived=false** in the request and do not request the contents of a **\_derived** folder. The FrontPage Server Extensions Remote Protocol server version 12.0 does not return the list of files when **listDerived** (section [3.1.5.3.8](#)) is true.

<41> [Section 3.1.5.3.8](#): The FrontPage Server Extensions Remote Protocol clients do not send this value; Version 6.0 and 12.0 servers will ignore this value if it is received. Version 5.0 servers do not ignore this value and return the task list files if they exist.

<42> [Section 3.1.5.3.8](#): The FrontPage Server Extensions Remote Protocol version 12.0 always returns the document information and metadata even when **listFiles** is FALSE.

<43> [Section 3.1.5.3.8](#): The FrontPage Server Extensions Remote Protocol version 5.0 doesn't omit **document\_list**, but returns an empty **DOCUMENT-LIST-RETURN-TYPE** (section [2.2.2.2.13](#)) when **listFiles** is set as FALSE.

<44> [Section 3.1.5.3.8](#): The FrontPage Server Extensions Remote Protocol versions 6.0 and 12.0 servers return an empty **DOCUMENT-LIST-RETURN-TYPE** if the platform parameter is sent. The FrontPage Server Extensions Remote Protocol versions 4.0 and 5.0 enumerate a folder (not accessible in the URL namespace) that the platform parameter identifies. The default configuration has folders named "WinI386" and "all". Server administrators can install modules into these folders or create new sibling directories.

<45> [Section 3.1.5.3.9](#): The FrontPage Server Extensions Remote Protocol version 12.0 **move document** (section [3.1.5.3.9](#)) method does not create a missing parent folder when **rename\_option** sets **createdir**.

<46> [Section 3.1.5.3.9](#): The FrontPage Server Extensions Remote Protocol versions 5.0 and 12.0 **move document** (section [3.1.5.3.9](#)) method does not create the folder when **put\_option** sets **createdir**.

<47> [Section 3.1.5.3.10](#): The FrontPage Server Extensions Remote Protocol versions 6.0 and 12.0 ignore this parameter.

<48> [Section 3.1.5.3.12](#): The FrontPage Server Extensions Remote Protocol versions 6.0 and 12.0 do not support this behavior; however, versions 4.0 and 5.0 do.

<49> [Section 3.1.5.3.13](#): The FrontPage Server Extensions Remote Protocol versions 6.0 and 12.0 do not support this behavior; however, versions 4.0 and 5.0 do.

<50> [Section 3.1.5.3.13](#): The FrontPage Server Extensions Remote Protocol versions 5.0, 6.0, and 12.0 send an empty **METADICTs**, and version 4.0 send the **METADICT** that existed before the document was deleted.

<51> [Section 3.1.5.3.13](#): The FrontPage Server Extensions Remote Protocol version 6.0 send an empty **METADICTs**, and versions 4.0, 5.0, and 12.0 send the **METADICT** that existed before the document was deleted.

<52> [Section 3.1.5.3.14](#): The following table specifies which version of the FrontPage Server Extensions Remote Protocol is contained in each version of Windows.

Revision summary	In-box FPSE server	Other supported FPSE servers
Windows NT 3.51	None	None
Windows NT 4.0	None	None
Windows XP operating system (x86)	4.0	None
Windows XP 64-Bit Edition	None	None
Windows Server 2003 operating system (x86)	5.0	5.0, 6.0, 12.0
Windows Server 2003 (x64)	None	6.0, 12.0
Windows Server 2003 R2	Microsoft FrontPage Server Extensions, Windows SharePoint Services 3.0	5.0, 6.0, 12.0
Windows Vista	None	None
Windows Server 2008 operating system	12.0	5.0

<53> [Section 3.1.5.3.17.1](#): Windows Vista only supports the Windows SharePoint Services **dialogview** aspect of the FrontPage Server Extensions Remote Protocol. All other aspects of the protocol are deprecated in favor of WebDAV. For more information about WebDAV, see [\[MS-WDV\]](#).

## 7 Change Tracking

This section identifies changes that were made to this document since the last release. Changes are classified as New, Major, Minor, Editorial, or No change.

The revision class **New** means that a new document is being released.

The revision class **Major** means that the technical content in the document was significantly revised. Major changes affect protocol interoperability or implementation. Examples of major changes are:

- A document revision that incorporates changes to interoperability requirements or functionality.
- The removal of a document from the documentation set.

The revision class **Minor** means that the meaning of the technical content was clarified. Minor changes do not affect protocol interoperability or implementation. Examples of minor changes are updates to clarify ambiguity at the sentence, paragraph, or table level.

The revision class **Editorial** means that the formatting in the technical content was changed. Editorial changes apply to grammatical, formatting, and style issues.

The revision class **No change** means that no new technical changes were introduced. Minor editorial and formatting changes may have been made, but the technical content of the document is identical to the last released version.

Major and minor changes can be described further using the following change types:

- New content added.
- Content updated.
- Content removed.
- New product behavior note added.
- Product behavior note updated.
- Product behavior note removed.
- New protocol syntax added.
- Protocol syntax updated.
- Protocol syntax removed.
- New content added due to protocol revision.
- Content updated due to protocol revision.
- Content removed due to protocol revision.
- New protocol syntax added due to protocol revision.
- Protocol syntax updated due to protocol revision.
- Protocol syntax removed due to protocol revision.
- Obsolete document removed.

Editorial changes are always classified with the change type **Editorially updated**.

Some important terms used in the change type descriptions are defined as follows:

- **Protocol syntax** refers to data elements (such as packets, structures, enumerations, and methods) as well as interfaces.
- **Protocol revision** refers to changes made to a protocol that affect the bits that are sent over the wire.

The changes made to this document are listed in the following table. For more information, please contact [dochelp@microsoft.com](mailto:dochelp@microsoft.com).

Section	Tracking number (if applicable) and description	Major change (Y or N)	Change type
<a href="#">6</a> Appendix A: Product Behavior	Updated list of supported products.	Y	Content updated due to protocol revision.

Preliminary



## 8 Index

### A

Abstract data model  
[server](#) 39  
[Applicability](#) 13

### C

[Change tracking](#) 79

### D

Data model - abstract  
[server](#) 39  
[Data Types message](#) 17

### E

[Entry Points message](#) 28  
Examples  
[overview](#) 60

### F

[Fields - vendor-extensible](#) 14

### G

[Glossary](#) 8

### H

Higher-layer triggered events  
[server](#) 42

### I

[Index of security parameters](#) 72  
[Informative references](#) 10  
Initialization  
[server](#) 40  
[Introduction](#) 8

### M

Messages  
[Data Types](#) 17  
[Entry Points](#) 28  
[Metadata](#) 28  
[Syntax](#) 15  
[transport](#) 15  
[Metadata message](#) 28

### N

[Normative references](#) 9

### O

[One-Click Attacks](#) 72

Other local events  
[server](#) 59  
[Overview \(synopsis\)](#) 10

### P

[Parameters - security index](#) 72  
[Permissions for Entry Points](#) 72  
[Permissions for Objects](#) 72  
[Preconditions](#) 13  
[Prerequisites](#) 13  
[Product behavior](#) 73

### R

[References](#) 9  
[informative](#) 10  
[normative](#) 9  
[Relationship to other protocols](#) 13

### S

Security  
[parameter index](#) 72  
Server  
[abstract data model](#) 39  
[higher-layer triggered events](#) 42  
[initialization](#) 40  
[other local events](#) 59  
[overview](#) 39  
[Standards assignments](#) 14  
[Syntax message](#) 15

### T

[Tracking changes](#) 79  
[Transport](#) 15  
Triggered events - higher-layer  
[server](#) 42

### V

[Vendor-extensible fields](#) 14