

Microsoft Dynamics® GP

Using Microsoft Team Foundation Server 2010 with Microsoft Dexterity®

White Paper

This document provides the basic instructions for setting up Microsoft Team Foundation Server as a source code control repository for Dexterity.

Date: January 2011

Updated: September 2013



Table of Contents

Introduction.....	3
Configuring the Team Foundation Server	3
Installing Team Foundation Server 2010	3
Configuring Team Foundation Server	4
Installing Microsoft Visual Studio Team Explorer	7
Creating a Team Project	8
Configuring Source Control for a Team Project.....	10
Configuring Workstations	11
Connecting to the Team Foundation Server	11
Installing the Dexterity Source Code Control Server	12
Configuring the Dexterity Source Code Control Server	13
Configuring Dexterity	13

Introduction

This document describes the basic procedure for installing Microsoft Team Foundation Server 2010 and configuring workstations to use it as a source code control repository for Dexterity development. Other features of Team Foundation Server are not discussed. Refer to the Team Foundation Server documentation for more information about using the other features.

There are two parts to the installation process. First, you will install and configure the Team Foundation Server. Second, you will configure each workstation that is running Dexterity and accessing the Team Foundation Server.

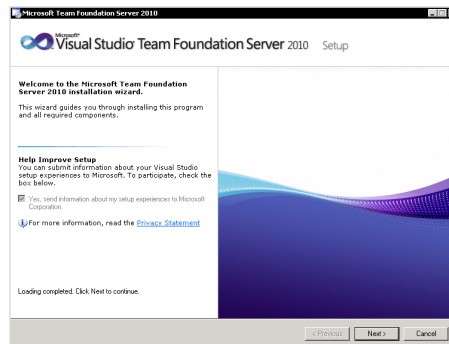
Configuring the Team Foundation Server

Complete the following procedures to set up the Team Foundation Server.

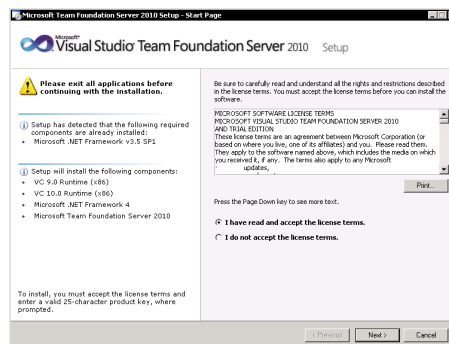
Installing Team Foundation Server 2010

Install Team Foundation Server 2010 on the system that will act as the repository. To install Team Foundation Server 2010, complete the following procedure:

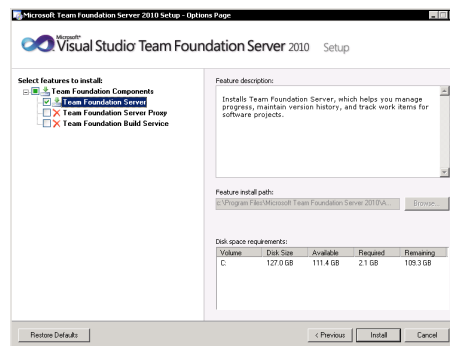
1. Run setup.exe for the appropriate version (32-bit or 64-bit) of Microsoft Team Foundation Server. The main installation screen will be displayed. Click Next to continue.



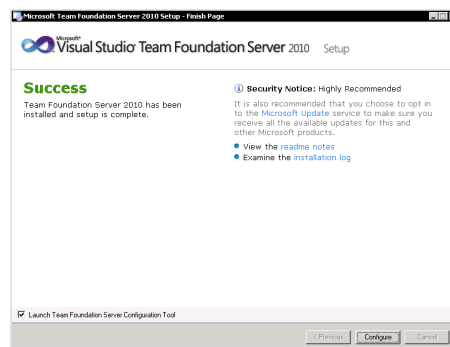
2. Read and acknowledge the license agreement. Click Next to continue.



3. Install the Team Foundation Server. Click Install to start the installation process.



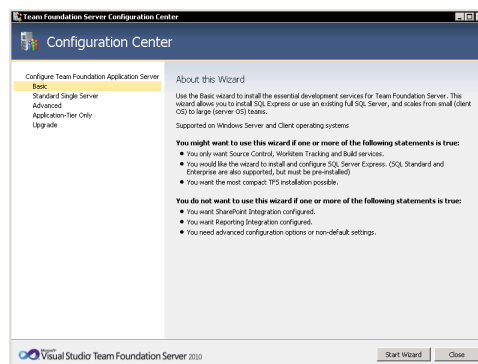
4. After the installation is complete, you must configure the Team Foundation Server. Be sure that Launch Team Foundation Server Configuration Tool is marked, and then click Configure. The Configuration Center will open.



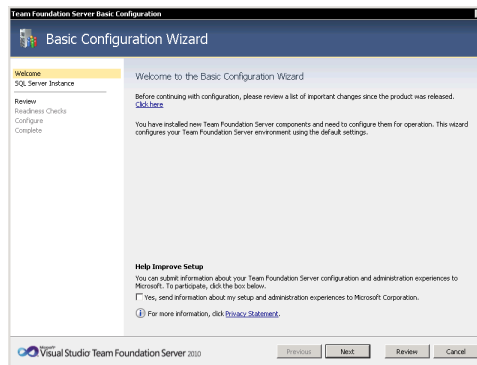
Configuring Team Foundation Server

To configure the Team Foundation Server, complete the following procedure:

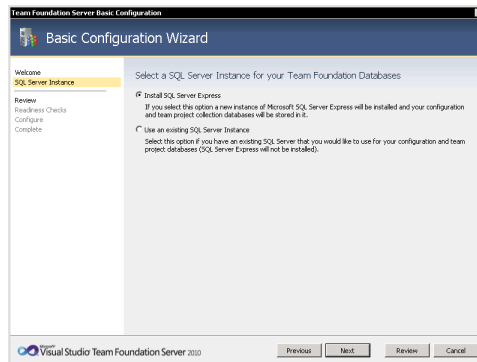
1. Choose the Basic configuration. While other configurations can be used, this is the easiest to set up. Click Start Wizard.



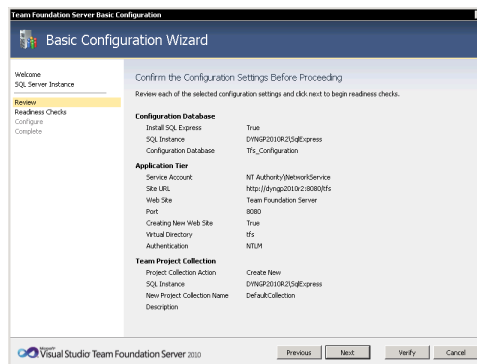
- At the welcome screen, click Next to continue.



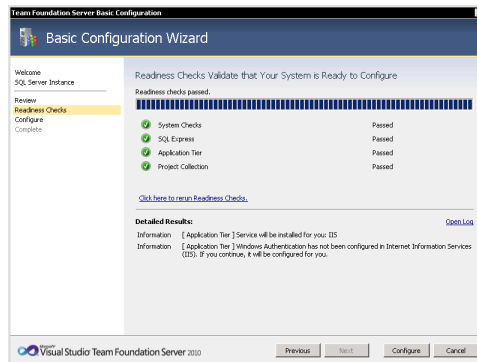
- Choose to install SQL Server Express. The contents of the source code control repository will be stored here. Click Next to continue.



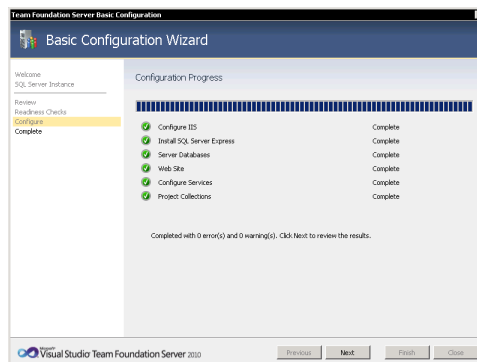
- Review the configuration settings. Click Next to continue.



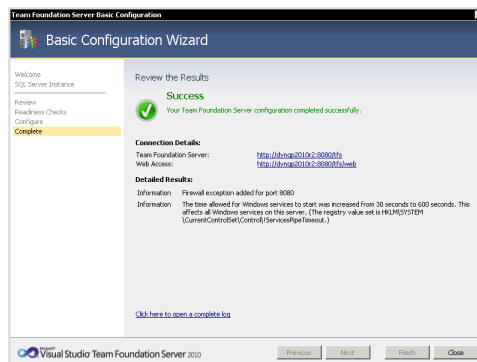
- The Basic Configuration Wizard will run several readiness checks. If they all pass, click Configure to begin the configuration process.



- The configuration process will complete. This may take several minutes. When the process has finished, click Next to continue.



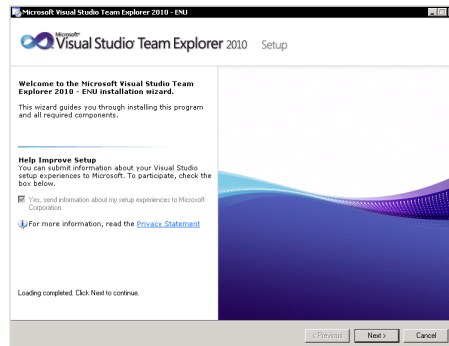
- Complete the configuration process. Click Close to exit the wizard.



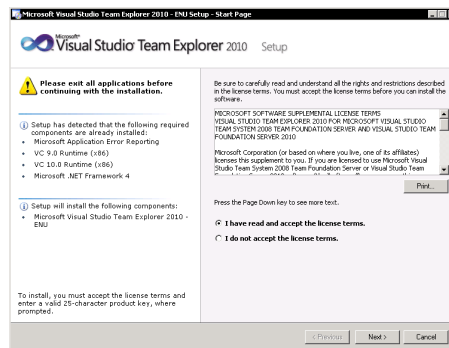
Installing Microsoft Visual Studio Team Explorer

To configure the repository in Team Foundation Server, you need to use either Microsoft Visual Studio 2010 or Microsoft Visual Studio Team Explorer. Microsoft Visual Studio Team Explorer is included with Team Foundation Server. Use the following procedure to install it.

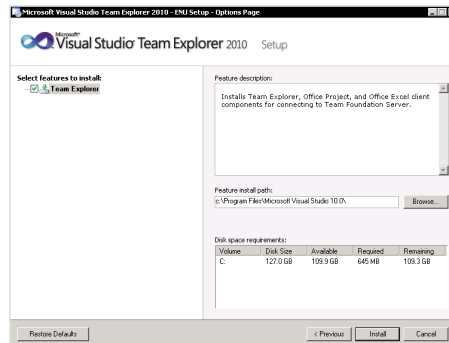
1. Run setup.exe for Microsoft Visual Studio Team Explorer. The main installation screen will be displayed. Click Next to continue.



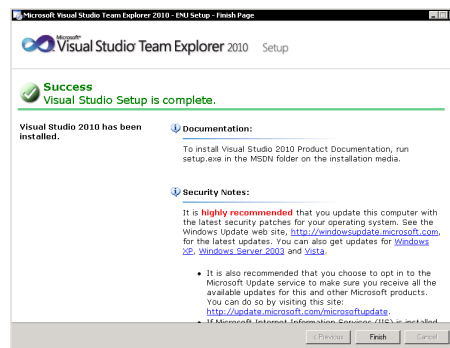
2. Read and acknowledge the license agreement. Click Next to continue.



3. Install Team Explorer. Click Install to start the installation process.



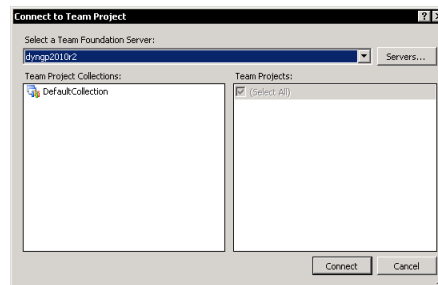
4. After the installation is complete, click Finish.



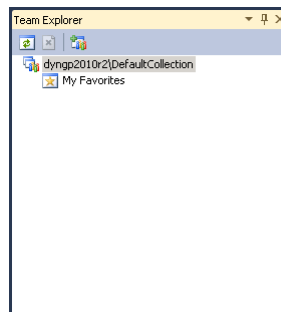
Creating a Team Project

A team project contains the repository where your dictionary resources will be stored. Use the following procedure to create a team project.

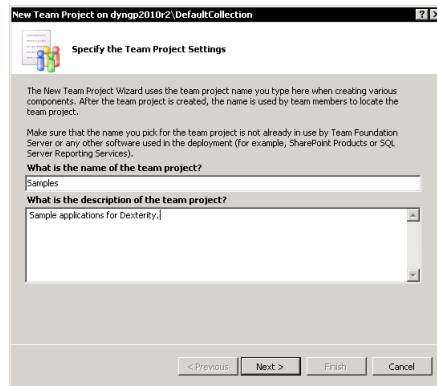
1. Start Visual Studio or Team Explorer.
2. From the Team menu, choose Connect to Team Foundation Server. Select your Team Foundation Server, and then click Connect.



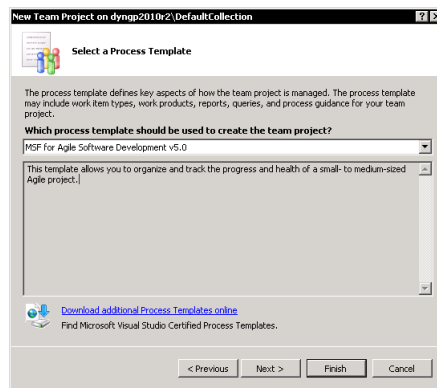
3. In Team Explorer, select a collection. If you haven't created a separate collection, use the default collection.



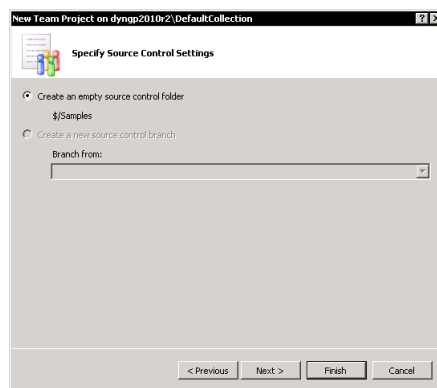
- From the File menu, choose New Team Project. Supply a name and description for the team project. Click Next to continue.



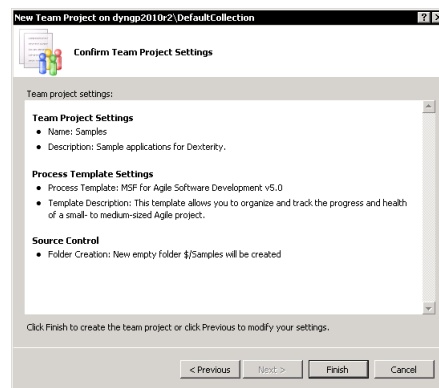
- Choose a process template. If you do not have a specific preference, the MSF for Agile Software Development is suitable for a Dexterity repository. Click Next to continue.



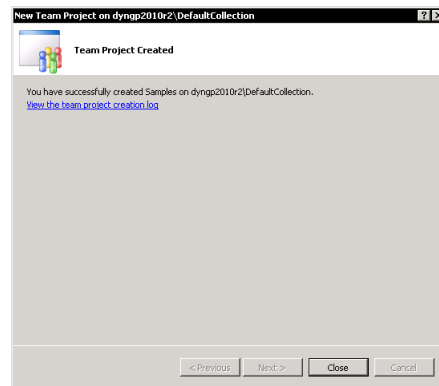
- Choose to create an empty source control folder. Click Next to continue.



7. Review the team project settings. Click Finish.



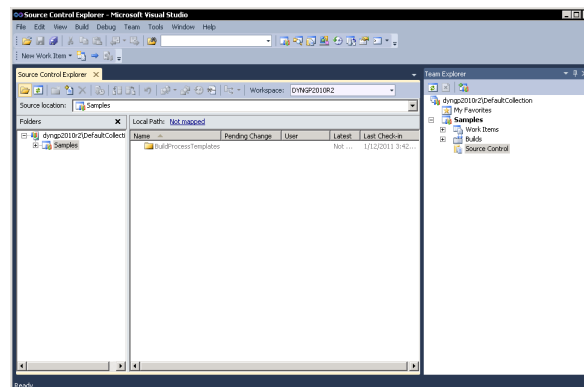
8. The team project will be created. Click Close.



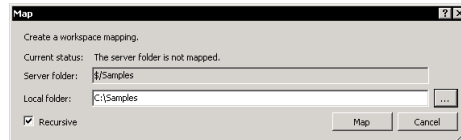
Configuring Source Control for a Team Project

In the team site, you must configure the source control repository. To do this, complete the following procedure.

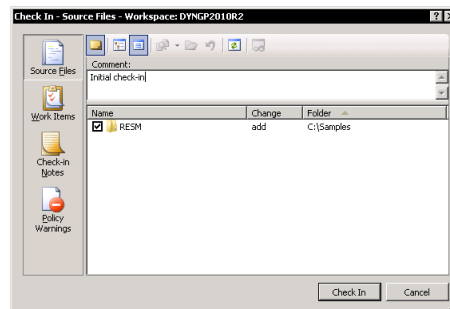
1. In Team Explorer, double-click Source Control in the team project that you just created. The Source Control Explorer will be displayed.



2. Set the local path. At the top of the Source Control Explorer, you will see that the Local Path setting says "Not mapped". Click the link to open the Map window.



3. Map the Source Control collection to a local folder on the system. The source files that you will be checking into and out of the repository will be placed in this folder. Specify a location, and then click Map. A message will be displayed indicating that a "get" operation should be performed. Click Yes.
4. Create folders for the repository. Typically, there is one folder for each dictionary that you will be storing in the repository. Right-click in the main list of the Source Control Explorer and choose New Folder.
5. Set the name of the folder. Typically, this will match the name of the dictionary.
6. Right-click the new folder and choose Check In Pending Changes. Supply a comment and click Check In.



Configuring Workstations

Complete the following procedures to configure each workstation that will be running Dexterity and accessing the Team Foundation Server.

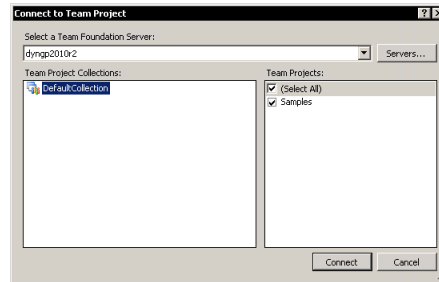
Connecting to the Team Foundation Server

You must create a connection to the Team Foundation Server on every workstation that will be accessing the Team Foundation Server source code repository. To do this, complete the following procedure:

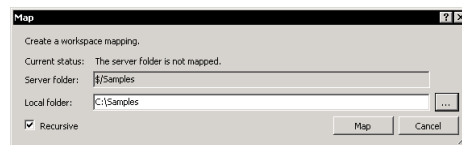
Install Microsoft Visual Studio Team Explorer or Microsoft Visual Studio on the workstation. This is required to create the connection to the source code repository. Refer to Installing Microsoft Visual Studio Team Explorer earlier in this document for a detailed installation procedure.

1. Start Visual Studio or Team Explorer.
2. From the Team menu, choose Connect to Team Foundation Server. If your Team Foundation Server is not listed, click Servers. Click Add, and then supply the name of the Team Foundation Server. Select your Team Foundation Server.

3. Select the team project collection to use, and then select the team project that contains the source code repository. Click Connect.



4. In Team Explorer, double-click Source Control in the team project that you just selected. The Source Control Explorer will be displayed.
5. Set the local path. At the top of the Source Control Explorer, you will see that the Local Path setting says "Not mapped". Click the link to open the Map window.



6. Map the Source Control collection to a local folder on the system. The source files that you will be checking into and out of the repository will be placed in this folder. Specify a location, and then click Map. A message will be displayed indicating that a "get" operation should be performed. Click Yes.

Installing the Dexterity Source Code Control Server

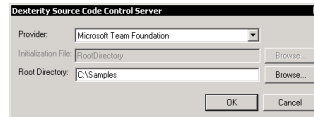
You must install the Dexterity Source Code Control Server (DSCCS) on every workstation that will be accessing the Team Foundation Server source code repository. To install the DSCCS, complete the following procedure:

1. From the Dexterity installation media, run the DSCCS installer.
2. Review and acknowledge the license agreement. Click Next to continue.
3. Choose the installation location for the Dexterity Source Code Control Server. Click Next to continue.
4. Supply the credentials under which the DSCCS will be run. When using the Team Foundation Server provider, use the credentials for the person that will be accessing the repository from the workstation on which you are installing the DSCCS. The credentials you supply are used by the Team Foundation Server to identify each individual user of the source code repository. Each workstation on which Dexterity is installed should have a unique set of credentials for the DSCCS.
5. Click Install to continue the installation process. After the installation is complete, the Dexterity Source Code Control Server configuration window will be displayed. The following section describes how to configure the DSCCS.

Configuring the Dexterity Source Code Control Server

You must configure the Dexterity Source Code Control Server (DSCCS) to use the Team Foundation Server provider. To configure the DSCCS, complete the following procedure:

1. If the Dexterity Source Code Control Server configuration window isn't already open, choose the Dexterity SCCS control panel for the system to display it.

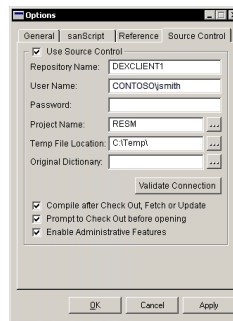


2. Choose Microsoft Team Foundation as the provider. If you are using DSCCS from Dexterity 12.0 Service Pack 2 or later, choose Microsoft Team Foundation (VS 2010) as the provider.
3. Set the root directory to the same location you specified as the "local path" when you created the connection to the source control repository. By supplying this location, the Dexterity client will be able to find the files that are being checked into and out of the Team Foundation Server source control repository.
4. Click OK to save your changes. You may need to restart the Dexterity Source Code Control Service for the changes to take effect.

Configuring Dexterity

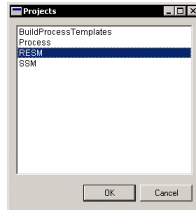
To configure Dexterity to access the Team Foundation Server repository, complete the following procedure.

1. In Dexterity, choose Options from the Edit menu. Display the Source Control tab.



2. Supply the repository name. When using the Team Foundation Server provider, this is the name of the workstation on which you installed Dexterity. This tells Dexterity to connect to the Dexterity Source Code Control Server service that is running on the local machine.
3. Supply the user name. This is the fully-qualified name (in the form DOMAIN\user) of the user that is accessing the repository.

4. Click the Project lookup button to display a list of projects for the repository. The list of projects should match the list of folders that you see in the Source Control view for the team project. Select a project and click OK.



You can now perform source code control operations in Dexterity, just as you would for any supported source code control provider.

Microsoft Dynamics is a line of integrated, adaptable business management solutions that enables you and your people to make business decisions with greater confidence. Microsoft Dynamics works like and with familiar Microsoft software, automating and streamlining financial, customer relationship and supply chain processes in a way that helps you drive business success.

U.S. and Canada Toll Free 1-888-477-7989

Worldwide +1-701-281-6500

www.microsoft.com/dynamics

The information contained in this document represents the current view of Microsoft Corporation on the issues discussed as of the date of publication. Because Microsoft must respond to changing market conditions, this document should not be interpreted to be a commitment on the part of Microsoft, and Microsoft cannot guarantee the accuracy of any information presented after the date of publication.

This document is for informational purposes only. MICROSOFT MAKES NO WARRANTIES, EXPRESS, IMPLIED, OR STATUTORY, AS TO THE INFORMATION IN THIS DOCUMENT.

Complying with all applicable copyright laws is the responsibility of the user. Without limiting the rights under copyright, no part of this document may be reproduced, stored in or introduced into a retrieval system, or transmitted in any form or by any means (electronic, mechanical, photocopying, recording, or otherwise), or for any purpose, without the express written permission of Microsoft Corporation.

Microsoft may have patents, patent applications, trademarks, copyrights, or other intellectual property rights covering subject matter in this document. Except as expressly provided in any written license agreement from Microsoft, the furnishing of this document does not give you any license to these patents, trademarks, copyrights, or other intellectual property.

© 2013 Microsoft Corporation. All rights reserved.

Microsoft, the Microsoft Dynamics Logo, Microsoft Dynamics, Microsoft Dexterity, Visual Studio, Windows, and Windows Server are either registered trademarks or trademarks of the Microsoft group of companies.

All other trademarks are property of their respective owners.

The Microsoft logo, consisting of the word "Microsoft" in a bold, sans-serif font.