



Quantify Microsoft Cloud-based carbon emissions

Emissions Impact Dashboard



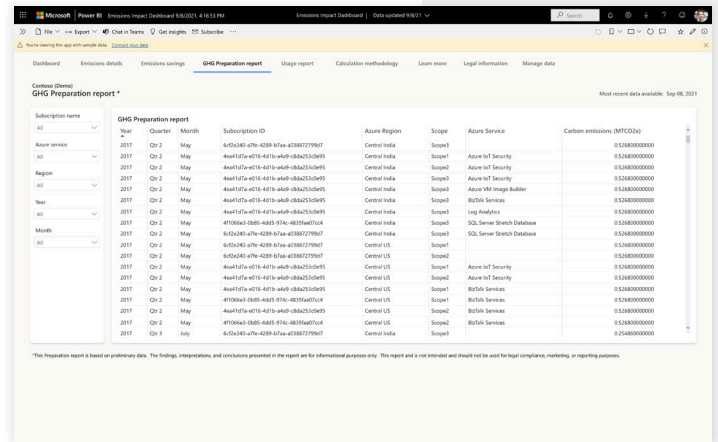
Carbon accounting to help you meet your emissions goals

Track your carbon emissions related to using Microsoft cloud services and share the findings with your teams. Make more data-driven decisions about cloud sustainability.



The Microsoft Emissions Impact Dashboard provides consistent and accurate carbon accounting to quantify your carbon footprint associated with using Microsoft cloud services. Evaluate your emissions across Microsoft scopes 1, 2, and 3 using our third party-validated methodology.

Microsoft is committed to providing this level of transparency for internal and regulatory reporting.

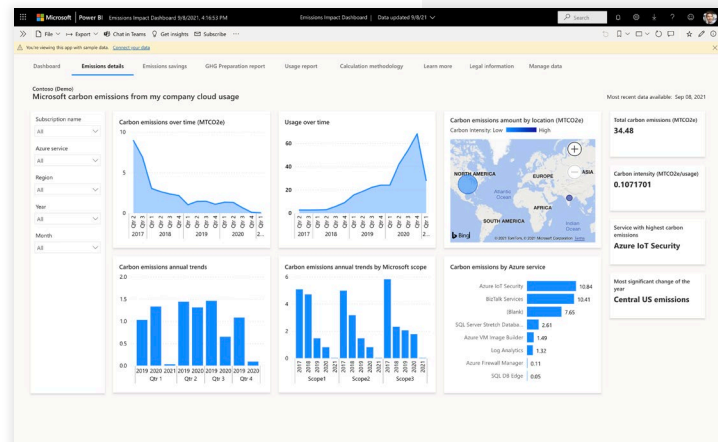


Before you start

The dashboard runs on **Power BI Pro**. If you don't already have **Power BI Pro**, sign up for a [free trial](#).

Offered to EA-direct, MCA, or CSP with Azure Plan customers, the dashboard requires an Enterprise Agreement (EA) enrollment number or Modern billing account ID.* If you need help, ask your Azure administrator.

*Enterprise and Modern users with Administrative privileges on their billing account can connect their company data to the dashboard. Check your EA portal or Azure billing portal for privileges prior to starting your connection.



Set up in just a few steps

Important: If you installed the preview version of the Emissions Impact Dashboard (formerly Microsoft Sustainability Calculator), you must still install the GA version and reconnect your data. Microsoft does not carry over your data between apps or app versions.

1 Download the app via [AppSource](#) or within Power BI by searching for **Emissions Impact Dashboard**.

If you don't have Power BI Pro, [get a free trial](#).

2 Open the app, click "Connect your data," and then enter your EA enrollment number or Modern billing account ID.

3 Follow prompts for authentication.

If you have an EA account:

- For **Authentication method**, select "OAuth2."
- For **Privacy level setting**, select "Organizational."
- Select your admin user account.

If you have a Microsoft Customer Agreement/Cloud Service Provider (MCA/CSP) account:

- For **Authentication method**, select "Anonymous."
- For **Privacy level setting**, select "Organizational."

4 Wait for data to load. This may take up to 24 hours.



▼
Get more detailed instructions:

- [Go to documentation](#)

