

## Acronyms

API  
Application Programming Interface  
CAPs  
Connection Authorization Policies  
DHCP  
Dynamic Host Configuration Protocol  
DNS  
Domain Name Service  
FVEK  
Full Volume Encryption Key  
HTTP  
Hypertext Transfer Protocol  
IIS  
Internet Information Services  
LOB Applications  
Line of Business Applications  
MMC  
Microsoft Management Console  
NAP  
Network Access Protection  
NAT  
Network Address Translation  
NPS  
Network Policy Server  
RAPs  
Resource Access Policies  
RDP  
Remote Desktop Protocol  
SHA  
System Health Agent  
SHV  
System Health Validator  
TS  
Trusted Platform Module  
TPM  
Trusted Platform Module  
TS  
Terminal Services  
VHD  
Virtual Hard Disk  
VM  
Virtual Machine  
VMK  
Volume Master Key  
VMM  
Virtual Machine Manager  
VSC  
Virtualization Service Consumer  
VSP  
Virtualization Service Provider  
VSS  
Volume Shadow Copy Service  
WAS  
Windows Activation Service  
WinPE  
Windows Pre-execution Environment  
WinRE  
Windows Recovery Environment  
WMI  
Windows Management Instrumentation  
WWW  
World Wide Web  
XML  
eXtensible Markup Language

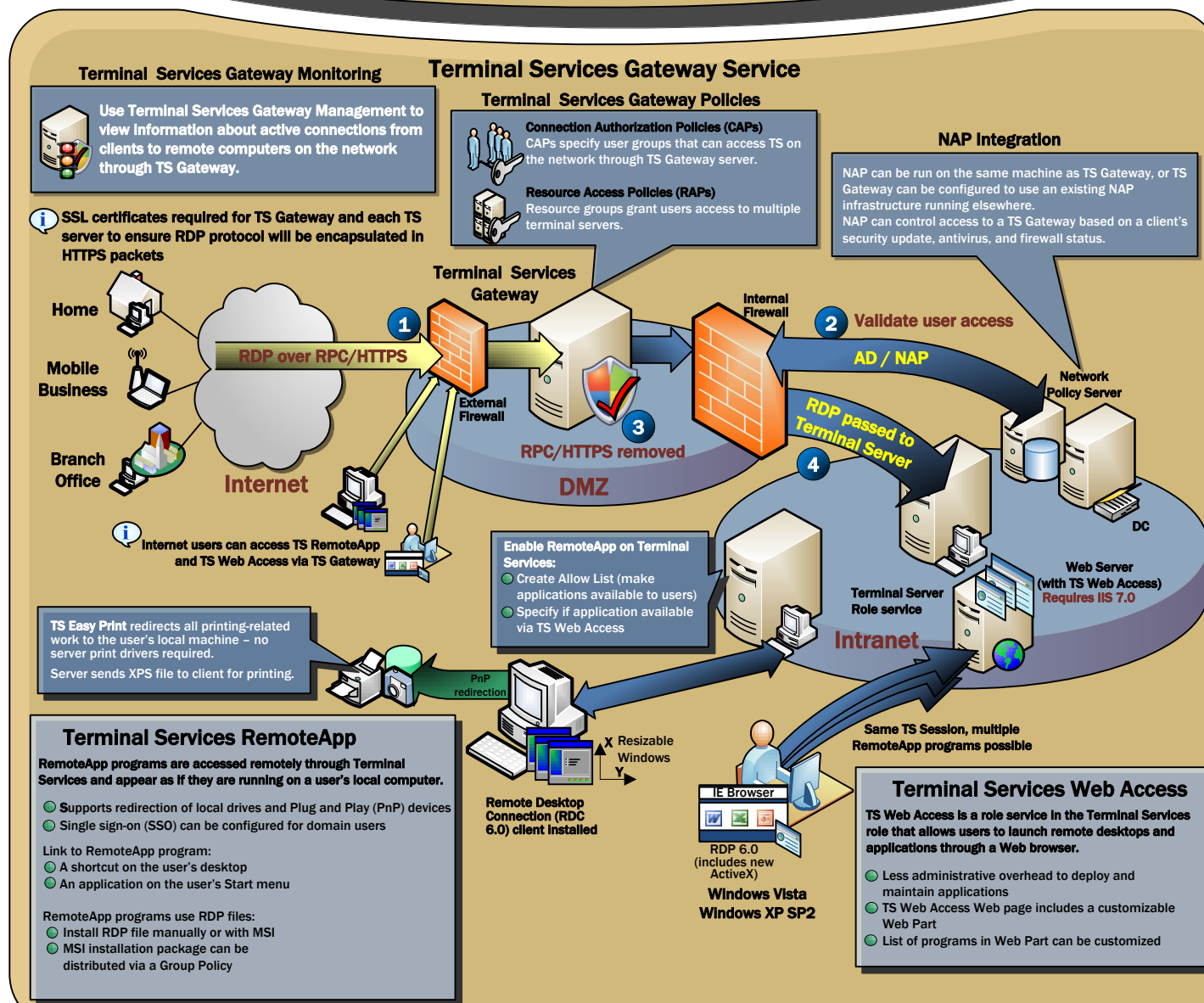
## Legend



### Terminal Services

#### Product Scenario: Centralized Application Access

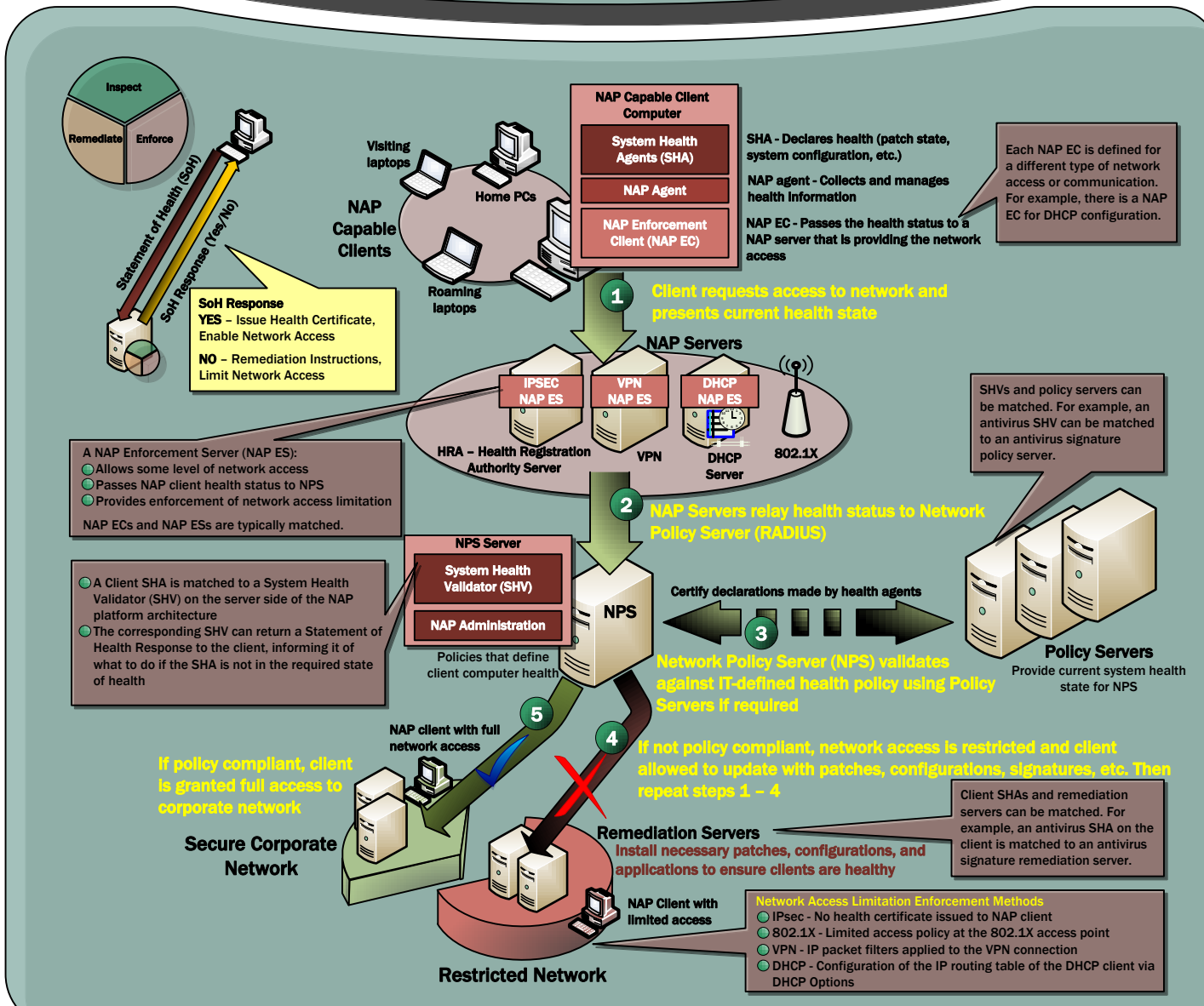
Terminal Services provides access to Windows-based programs from a variety of devices. Terminal Services is enhanced with Terminal Services RemoteApp, Terminal Services Web Access, and Terminal Services Gateway.



### Network Access Protection

#### Product Scenario: Security and Policy Enforcement

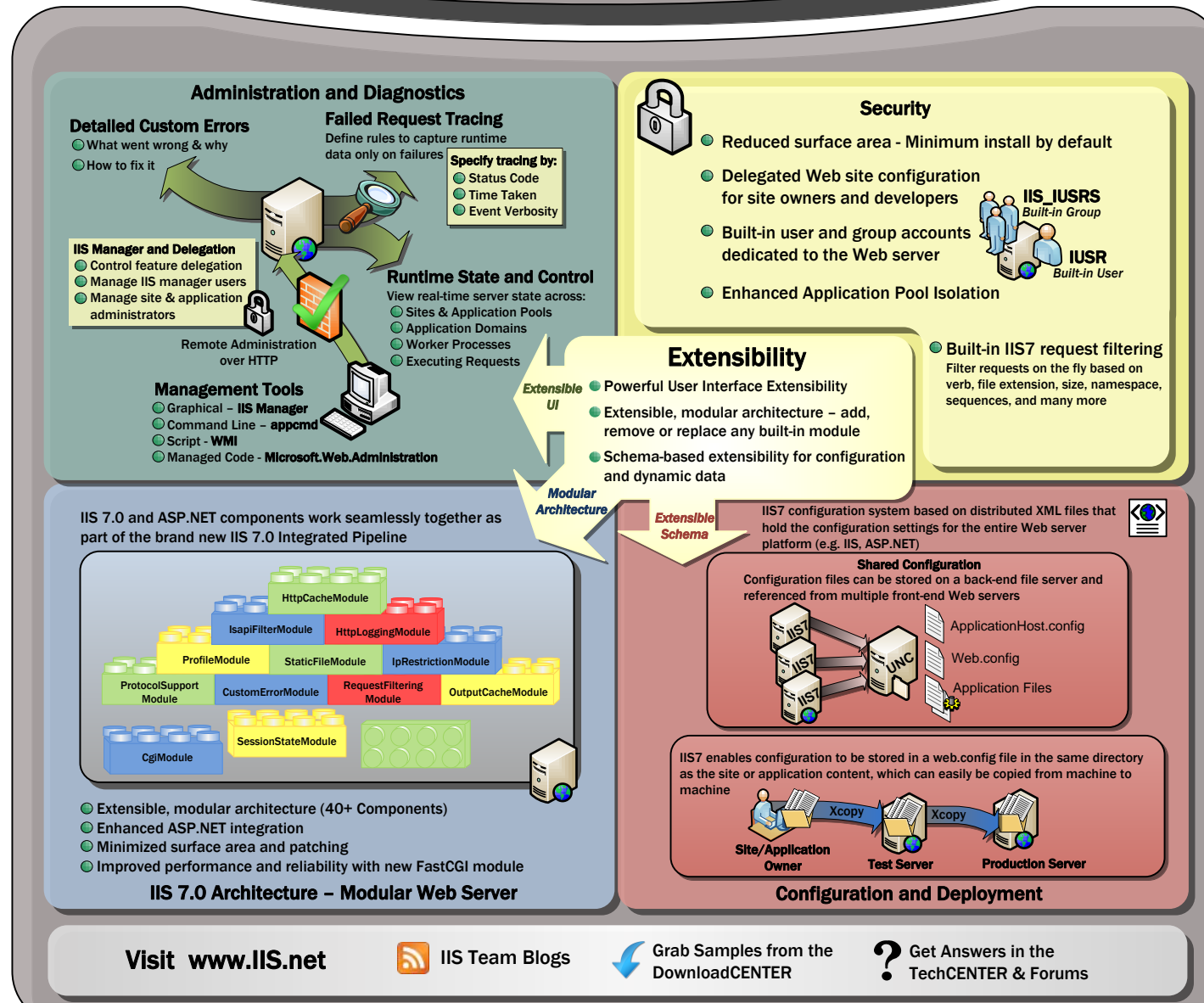
Network Access Protection (NAP) is a client health policy creation, enforcement, and remediation technology. NAP defines the required configuration and update conditions for a client computer's operating system and critical software.



### Internet Information Services 7.0

#### Product Scenario: Web & Applications Platform

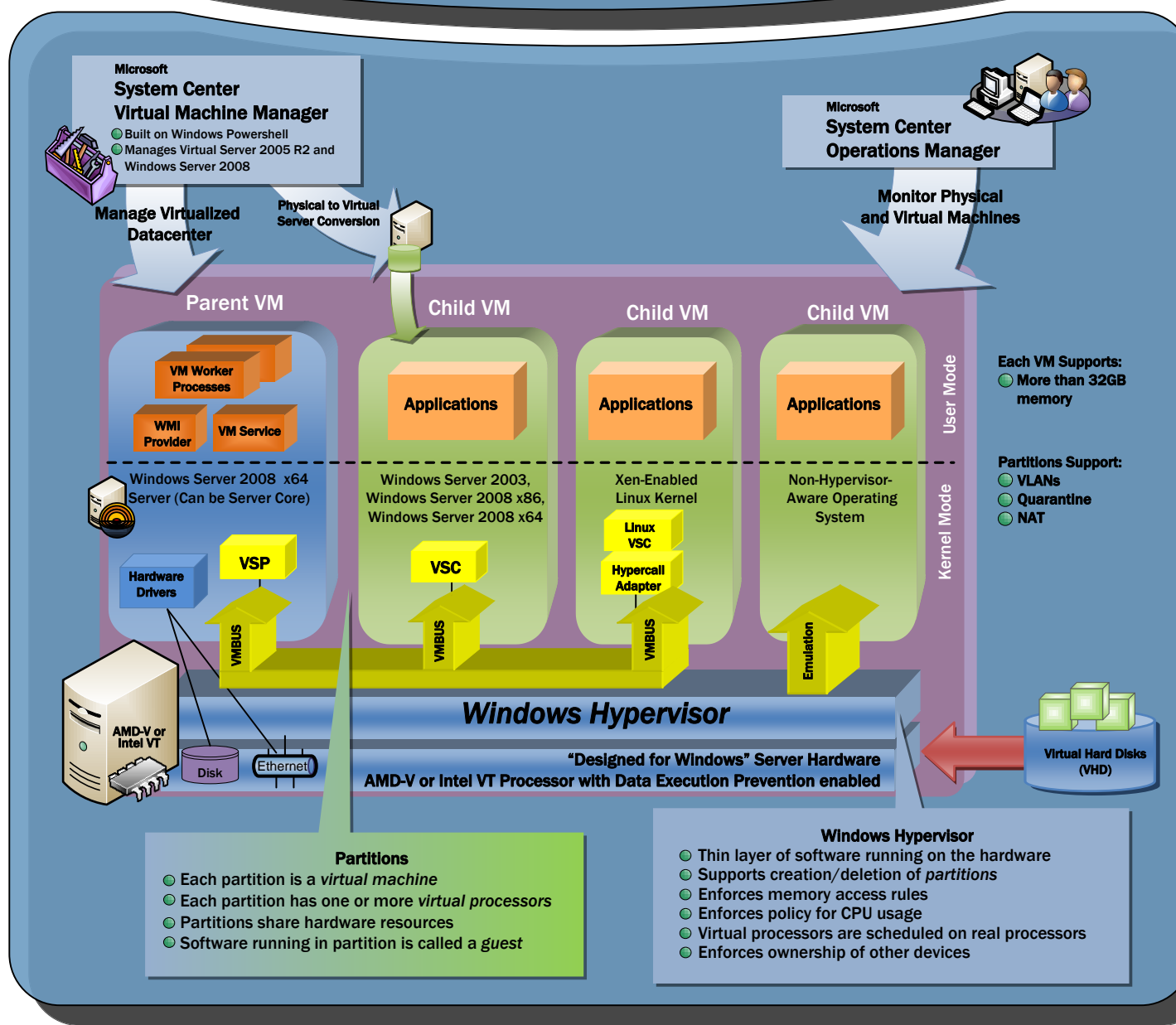
A secure, easy-to-manage server platform for developing and reliably hosting Web applications.



### Virtualization

#### Product Scenario: Server Virtualization

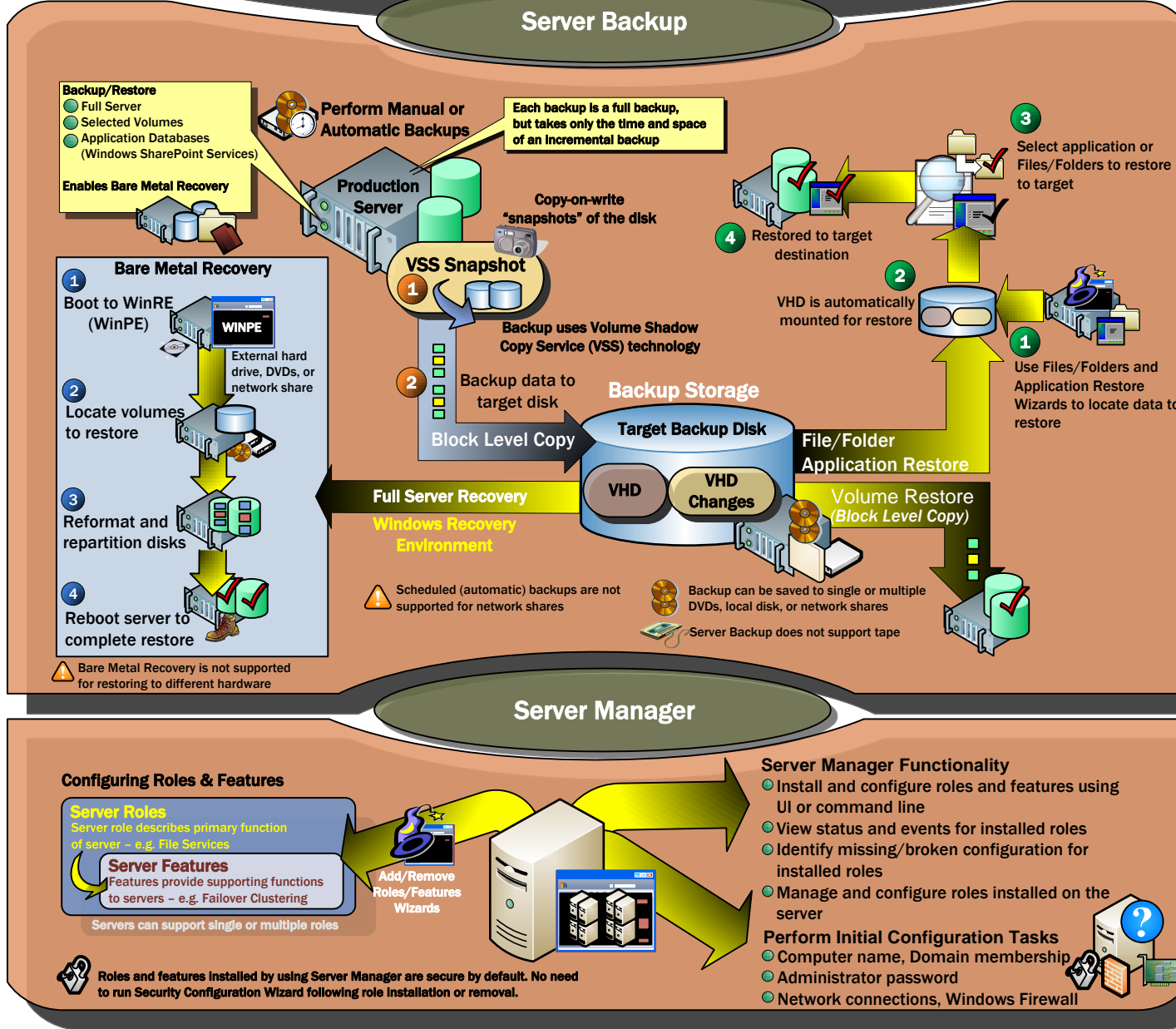
Windows Server 2008 includes Windows Server Virtualization. Windows Server Virtualization is a 64-bit hypervisor-based virtualization technology that facilitates agility and integrated management of both physical and virtual components.



### Server Manager and Server Backup

#### Product Scenario: Server Management

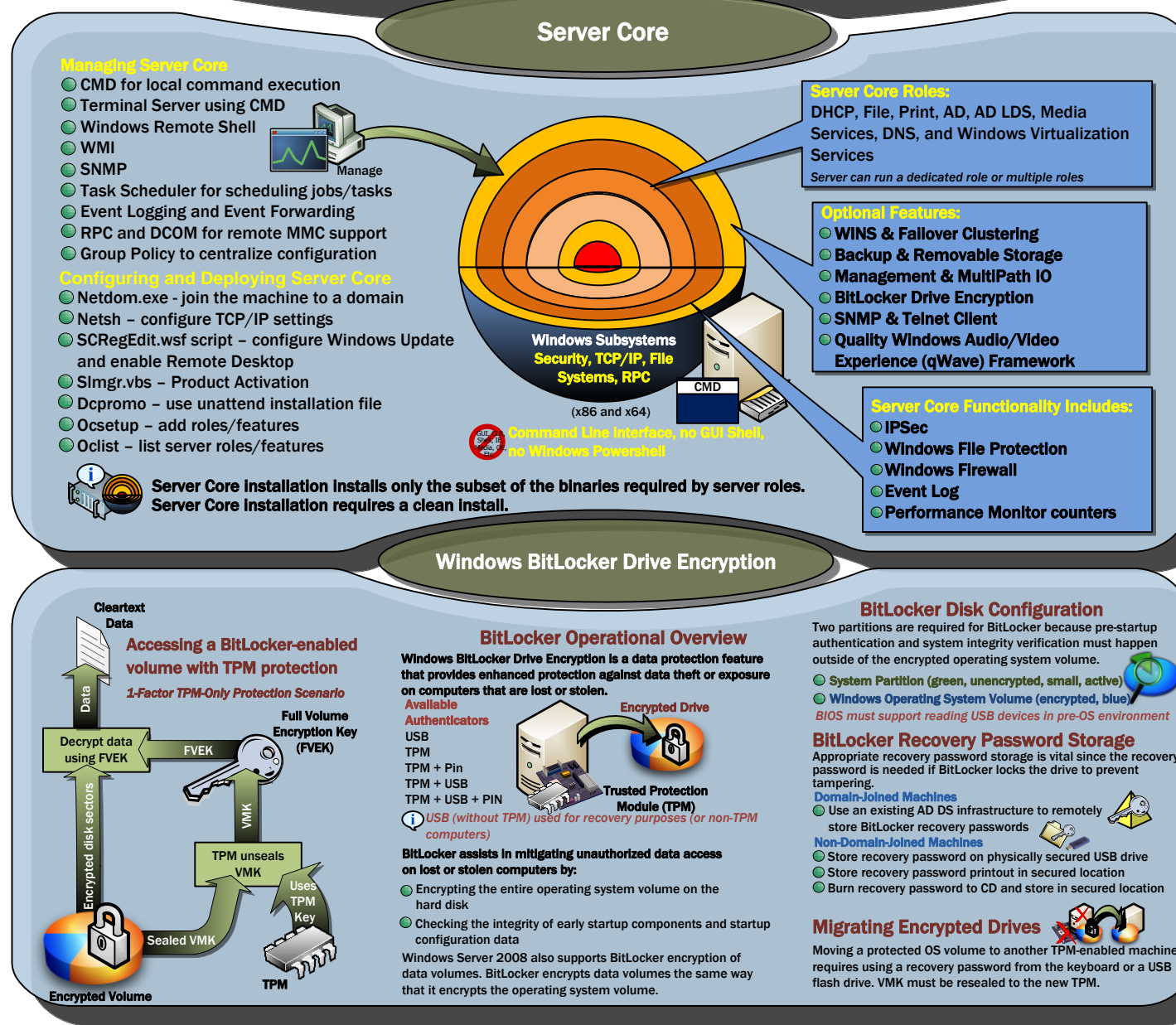
Server Manager provides server configuration and commands for managing roles and features. Server Backup feature provides backup and recovery solutions.



### Server Core & BitLocker

#### Product Scenario: Branch Office

Server Core installation option provides a minimal environment for running specific server roles, reducing servicing, management requirements, and the attack surface for those server roles. Windows BitLocker Drive Encryption protects data by encrypting the entire Windows volume.



# Windows Server 2008 Feature Components

This poster is based on a prerelease version of Windows Server 2008. All information herein is subject to change.

Authors: Martin McClean & Astrid McClean (Microsoft Australia)