

# Forecast business practice changes with what-if analysis

Nikol Vladinska  
Technical Program Manager





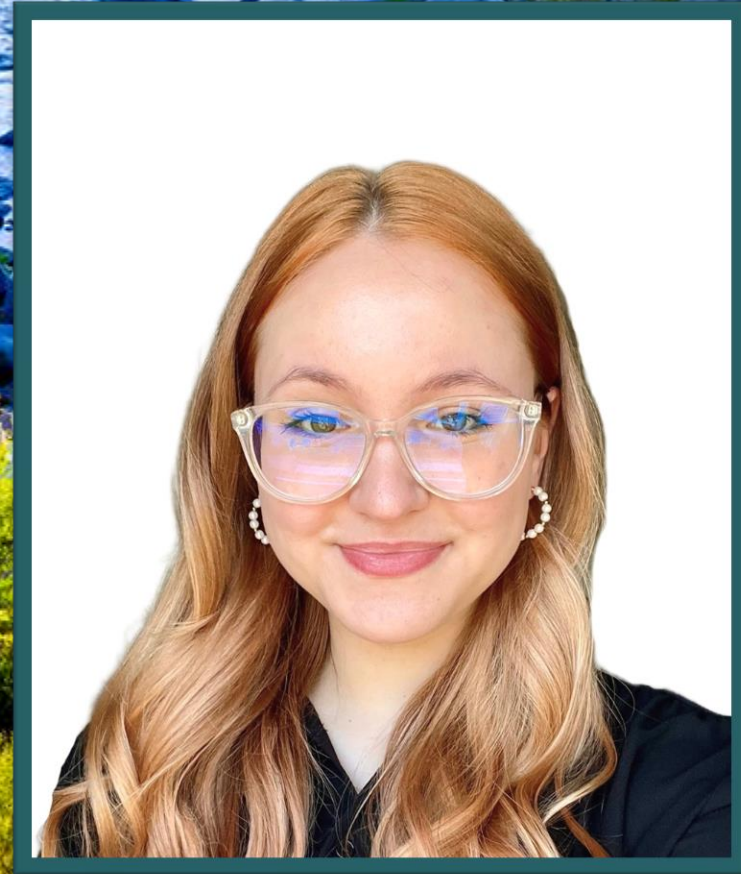
# Nikol Vladinska

*Technical Program Manager*

*<https://www.linkedin.com/in/nikol-vladinska/>*

***Ask me about...***

*AI in Microsoft Sustainability Manager*







# Agenda

- What-if analysis overview
- Demo
- Supported scenarios
- Q&A



What-if analysis is a custom AI-powered forecasting tool tailored to the carbon data model in MSM.

### **Fifteen customizable scenarios**

With customizable scenarios across Scopes 1, 2, and 3, organizations can explore and finetune the endless reduction opportunity simulations.

### **Product, material, quantity, etc. changes**

Organizations can align their forecast scenarios to things like switching to a new supplier or changes in their transportation and distribution.

### **Adaptable forecasting methodology**

What-if analysis uses ARIMA and ETS time-series forecasting models, in combination with custom data handling to generate high-confidence forecasts.

# Live Product Demo

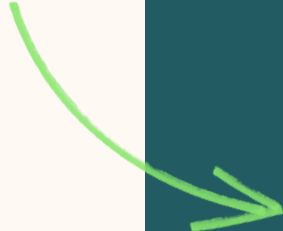
Scope	Category	Example	Change Field(s)
1	Industrial Process	What if we switched from <b>Casting</b> to <b>Hydroforming</b> our metal?	<b>Industrial process type</b>
	Mobile Combustion	What if we switched from <b>Diesel heavy-duty vehicles 2018</b> to <b>Gasoline heavy-duty vehicles 2018</b> ?	<b>Vehicle type</b> and <b>fuel type</b>
	Stationary Combustion	What If we switched from <b>Anthracite</b> to <b>Biodiesel</b> with a <b>conversion ratio of 0.79</b> ?	<b>Fuel type</b> and <b>energy conversion ratio</b> (defined by the user)
2	Purchased cooling	What if we switched to <b>renewable energy</b> for this facility?	<b>Is renewable</b>
	Purchased electricity		
	Purchased heat		
	Purchased steam		
3	Purchased goods and services	What if we switched from buying our Billboards from <b>Supplier A</b> to <b>Supplier B</b> ?	<b>Spend type</b>
	Capital goods	What if we switched from buying our Farm Equipment from <b>Supplier A</b> to <b>Supplier B</b> ?	
	Upstream T&D	What if we switched from transporting our computer chips by <b>plane</b> to <b>boat</b> , resulting in a <b>20% increase to distance traveled</b> and <b>150% increase in goods quantity</b> ?	<b>Transport mode</b> , <b>Distance</b> , and <b>Goods quantity</b>
	Waste generated in operations	What if we switched from sending our <b>plastic</b> to a <b>landfill</b> to <b>recycling</b> it?	<b>Material</b> and <b>Disposal method</b>
	Business travel	What if we switched from sending employees to conferences by <b>plane</b> and instead had them take <b>trains</b> , <b>increasing distance traveled by 14%</b> ?	<b>Business travel type</b> and <b>Distance</b>
	Employee commuting	What if employees switched from commuting by <b>bus</b> to commuting by <b>train</b> , resulting in <b>20% less distance traveled</b> ?	<b>Employee commuting type</b> , <b>Distance</b>
	Downstream T&D	See Upstream T&D	
EOL treatment of sold products	See Waste generated in operations		

# Related sessions

Session	Title	Abstract	Speaker	Date
SUS02T	Save time with Copilot in Microsoft Sustainability Manager	Join us as we provide an in-depth look at how Copilot, powered by Azure OpenAI, can assist organizations in streamlining and expediting processes throughout the sustainability lifecycle. From analyzing documents and creating calculation models to generating preparation reports in MSM, Copilot brings a growing set of skills to help you complete various tasks efficiently.	Nikol Vladinska	Tuesday, May 7th



Thank you!



→ How was the Summit? Share your feedback!  
[aka.ms/MCfSTSFeedback](https://aka.ms/MCfSTSFeedback)

→ Learn more about what-if analysis  
<https://learn.microsoft.com/en-us/industry/sustainability/sustainability-manager-analytics-what-if-analysis>

→ Join the Sustainability Community!  
[aka.ms/MCfSCommunity](https://aka.ms/MCfSCommunity)

→ Learning Resources  
[aka.ms/CloudforSustainabilityLearnCollection](https://aka.ms/CloudforSustainabilityLearnCollection)





Q&A

Please type your questions **in the chat** and we will answer them during the Q&A session.

