

Save time with Copilot in Microsoft Sustainability Manager

Nikol Vladinska
Technical Program Manager,
Microsoft Cloud for Sustainability



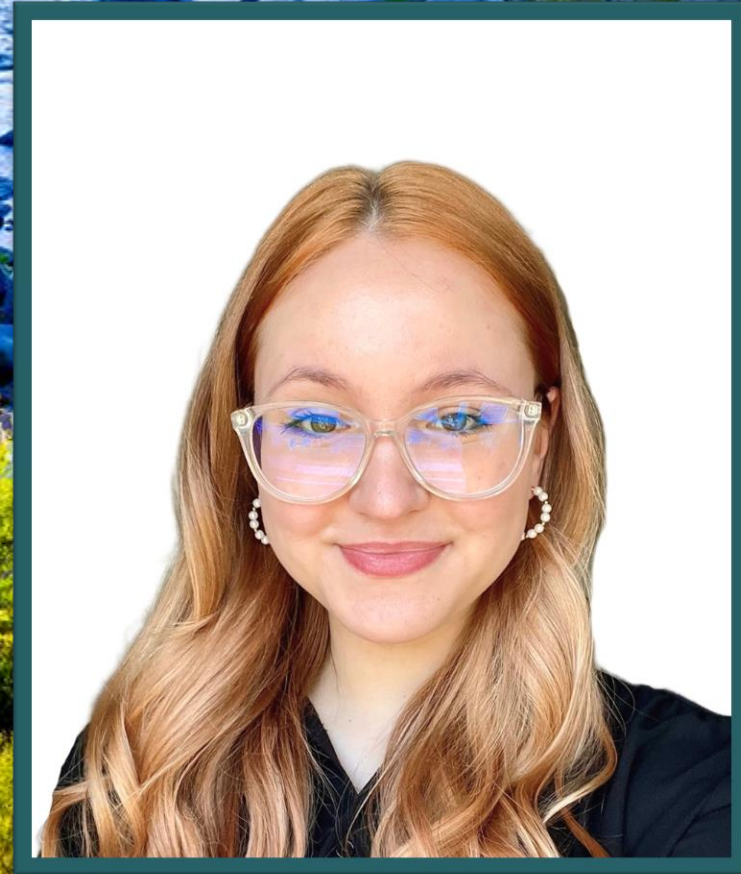
Nikol Vladinska

Technical Program Manager

<https://www.linkedin.com/in/nikol-vladinska/>

Ask me about...

AI in Microsoft Sustainability Manager





Agenda

- Overview of Copilot in Microsoft Sustainability Manager
- Demo
- Q&A

Copilot in Microsoft Sustainability Manager

Copilot encompasses four separate skills which come together to create a seamless assistive technology within the product.

Data querying

Querying data with Copilot allows you to quickly get information related to:

- Reference data
- Application processes

Creating a calculation model

Instead of manually creating a calculation model, describe the model using natural language and allow Copilot to create it for you.

Analyzing documents

Upload PDF, DOCX, or TXT files and ask Copilot questions regarding their contents. You can query between one and five documents at a time.

Generating a preparatory report

Allow Copilot to generate a CSRD, Emissions, Water, or Waste preparatory report for you by giving it details such as the following:

- Report name
- Reporting period
- Organizational unit
- Language

- Recent
- Pinned
- Home
- Home
- Analytics
 - Executive dashbo...
 - Emissions insights
 - Water insights
 - Waste insights
 - Reporting
 - Scorecards & goals
 - Intelligent insight...
 - What-if analysis (...)
 - Document analysi...
- Data
 - Imports
 - Carbon activities
 - All emissions
 - Water data
 - Waste data
 - Reference data
 - Data capture (pre...
 - Data approval
 - Custom dimensions
 - Data providers
- Calculations
- Value chain



Record. Report. Reduce.

Take action and meet environmental goals by monitoring and managing your organization's impact.

Explore new product features

Take action

Set and track sustainability goals

Import and manage your data

Create and run calculations

Boost your efficiency with help from our product managers [See all](#)



Shaping the future
Setting and managing goals and scorecards
[▶ Watch video](#)



Importing data efficiently
Collecting and transforming data
[▶ Watch video](#)



Demystifying carbon accounting
Calculating your organization's emissions impact
[▶ Watch video](#)

Cover the basics

Configuration guide
These step-by-step instructions will help you get set up and ready to go
[→ Open the guide](#)

Product tours
A few short tours can quickly introduce you to Sustainability Manager
[→ Take a tour](#)

Help articles
This collection of support articles will help answer many questions
[→ Read articles](#)

Chat

Hi

Hello, how can I help you today?

AI-generated content may be incorrect

[View Prompts](#)

Ask a question about the data in the app. Use / to reference data

0/500

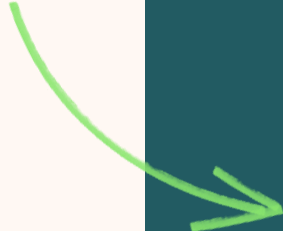
Make sure AI-generated content is accurate and appropriate before using. [See terms](#)

Related sessions

Session	Title	Abstract	Speaker	Date
SUS05R	Forecast business practice changes with what-if analysis	Join us for a session on What-if analysis designed to empower Sustainability practitioners with the knowledge and skills to leverage this powerful forecasting tool for their organization's unique needs. Learn how to customize scenarios across various scopes to accurately predict the impact of business practice changes on their emissions. This hands-on session will guide practitioners through the process of using What-if analysis to create data-driven reduction planning decisions, ultimately accelerating their sustainability goals.	Nikol Vladinska	Thursday, May 9



Thank you!



→ **How was the Summit? Share your feedback!**
aka.ms/MCfSTSFeedback

→ **Learn more about Copilot!**
<https://learn.microsoft.com/en-us/industry/sustainability/sustainability-manager-copilot-overview>

→ **Join the Sustainability Community!**
aka.ms/MCfSCommunity

→ **Learning Resources**
aka.ms/CloudforSustainabilityLearnCollection



Q&A

Please type your questions **in the chat** and we will answer them during the Q&A session.

