

# Business to Business (B2B) E-Commerce

Quickly provision and automate connections to trading partners using EDI for real-time business.

ON-PREMISES INTEGRATION

APP TIER

DATA TIER

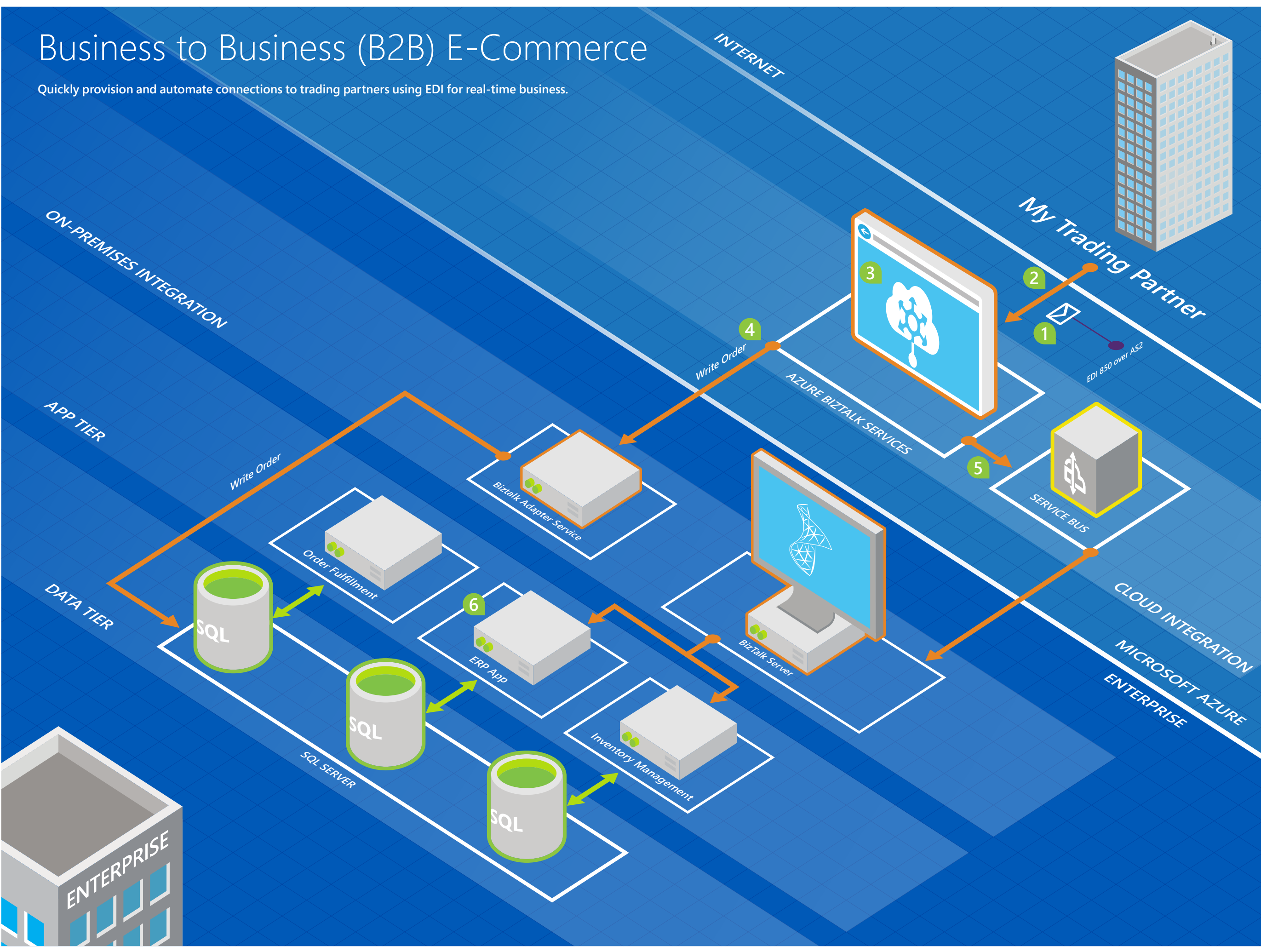
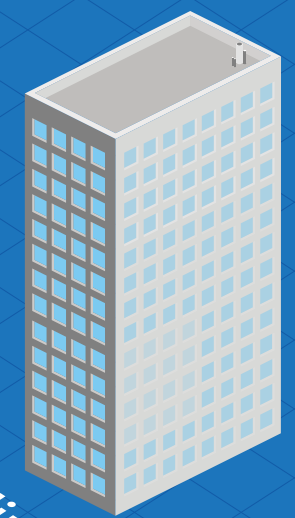
INTERNET

My Trading Partner

AZURE BIZTALK SERVICES

SERVICE BUS

CLOUD INTEGRATION  
MICROSOFT AZURE  
ENTERPRISE



- Microsoft
- 1 A trading partner orders from the business using an EDI message.
  - 2 The message is sent to Azure BizTalk Services over the Internet.
  - 3 BizTalk Services processes the message and transforms it into a format understood by your business.
  - 4 BizTalk Services writes the order to the on-premises order database. The order can then be viewed and processed in the on-premises order fulfillment application.
  - 5 BizTalk Services sends another message in a different format to an on-premises BizTalk Server using Service Bus.
  - 6 The on-premises BizTalk Server updates multiple systems of record, such as the ERP and inventory management applications.