

Introduction

In this Quick Start, you will learn about a few of the new features available in Windows Thin PC as well as the basics of installation. On completion, you will have a full installation of Windows Thin PC. We encourage you to then install your Thin PC solution as well as your management and monitoring solutions to verify that they all perform as expected, equivalent to their operation on Windows 7 Professional, Enterprise or Ultimate.

Highlights

Windows Thin PC is based on Windows 7 and benefits from many of the new features available in Windows 7 that are sure to enhance Thin PC deployments, including:

Security Enhancements

Building upon the security enhancements of Windows 7, Windows Thin PC responds to the enterprise's need to make the system more manageable and to contain the right security enhancements to help combat the continually evolving threat landscape. While not an exhaustive list, there are a number of features that will help to better secure your device, including AppLocker, BitLocker, Enhanced Auditing, and Streamlined User Account Control. For additional information about the Security Enhancements, please refer to [http://technet.microsoft.com/en-us/library/dd548337\(WS.10\).aspx](http://technet.microsoft.com/en-us/library/dd548337(WS.10).aspx).

Power Management

Today, more organizations are focusing on power management as a way of reducing costs. Windows 7 power management technologies provide platform and processor efficiencies that reduce power consumption, helping lower energy costs. The following video will provide an introduction to some of the power management features available to Windows Thin PC: <http://technet.microsoft.com/en-us/windows/ee524728>.

Manageability Enhancements

Windows Thin PC introduces a number of manageability improvements that can reduce the total cost of ownership by helping to increase automation and provide flexible administrative control to

meet compliance requirements. For an overview of these features, please see [http://technet.microsoft.com/en-us/library/dd443489\(WS.10\).aspx](http://technet.microsoft.com/en-us/library/dd443489(WS.10).aspx).

Embedded Enhancements

In addition to Windows 7 functionality, Windows Thin PC has incorporated a number of embedded specific enhancements to help lock down public facing devices, including Write Filters for creating stateless or semi-stateless environments, suppression of unwanted dialog message boxes, and a keyboard filter for suppressing unwanted keystrokes such as CTRL+ALT+DEL, ALT+F4, Windows+L, as well as custom defined keystroke combinations.

Hardware Requirements

Recommended Hardware Configuration

- 1 GHz or faster 32-bit (x86)
- 1 GB RAM, 4 GB available hard disk space
- DirectX 9 graphics device with WDDM 1.0 or later version driver

NOTE: We recommend that you install Windows Thin PC on a computer that has at least 16 GB of available disk space. Various features in Windows Thin PC can quickly increase the disk space requirements. For optimal performance of the hard disk, you need at least 15 percent free space at all times and sufficient space for the paging file, which might be up to two times the size of the system's RAM.

Additional requirements to use certain features:

- Internet access
- Depending on resolution, video playback may require additional memory and advanced graphics hardware
- BitLocker requires Trusted Platform Module (TPM) 1.2
- BitLocker To Go requires a USB flash drive
- Product functionality and graphics may vary based on the system configuration. Some features may require advanced or additional hardware.

Computers with multi-core processors:

Windows Thin PC is designed to work with today's multi-core processors. It supports up to 32 processor cores.

Computers with multiple processors (CPUs):

Windows Thin PC supports two physical processors, providing the best performance on these computers.

Preparing the DVD from the ISO image

An ISO file, also called a disc image, is a single file that's a copy of an entire data CD or DVD. When you burn a CD or DVD from an ISO file, the new disc has the same folders, files, and properties as the original disc. The most common way to get an ISO file is to download it from a website. For example, you might download and then use an ISO file to update software on your computer.

You can burn a disc image file, which often has either an .iso or .img file name extension, to a recordable CD or DVD by using Windows Disc Image Burner. Whether you can burn it to a recordable CD, DVD, or Blu-ray Disc depends on your disc burner and the type of discs it can burn, the size of the disc image file, as well as the device on which you plan to use the disc.

1. Insert a recordable CD, DVD, or Blu-ray Disc into your disc burner.
2. Open Computer by clicking the **Start** button, and then clicking **Computer**.
3. In Windows Explorer, find the disc image file, and then double-click it.
4. If you have more than one disc burner, from the **Disc burner** list in **Windows Disc Image Burner**, click the burner that you want to use.
5. (Optional) If you want to verify that the disc image was burned correctly to the disc, select the **Verify disc after burning** check box. If the integrity of disc image file is critical (for example, the disc image file contains a firmware update), you should select this check box.
6. Click **Burn** to burn the disc.

Notes

- If a third-party CD or DVD burning program is installed on your computer, that program might open when you double-click the disc image file. If this happens, and you want to use **Windows Disc Image Burner** to burn the CD or DVD from the disc image file instead, right-click the disc image file, and then click **Burn disc image**.
- You cannot create disc image files using **Windows Disc Image Burner**. To create a disc image file, you need to install and use a third-party CD or DVD burning program or other program that lets you create disc image files from a CD or DVD.

Installing Windows Thin PC

Any computer that meets or exceeds the hardware requirements can run Windows Thin PC. You can perform an interactive installation of Windows Thin PC by completing the following steps:

1. Turn on the computer and insert the Windows Thin PC DVD into the computer's DVD-ROM drive. When prompted, press a key to start the Setup program from the DVD.

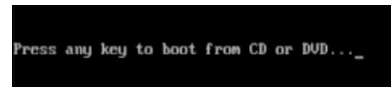


Figure 1: Boot from DVD

2. Choose your time format, currency format, keyboard layout, and then click **Next**.

Note

English is the only language supported at installation. This is an English-only release.



Figure 2: Language Options

3. Click **Install Now** to start the installation. Setup will copy temporary files and then start.

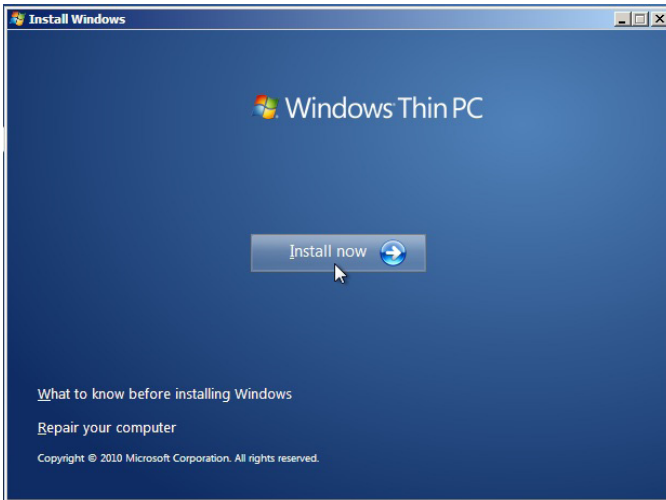


Figure 3: Install Now

4. Read the Microsoft Software License Terms. Click "I accept the license terms", and then click **Next**. (Note that depending on whether you are installing the evaluation copy or a volume licensed copy, evals will be different)

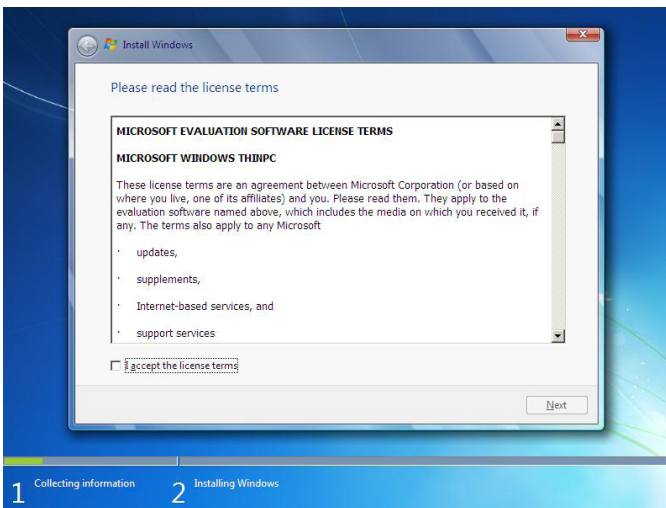


Figure 4a: Eval License Terms

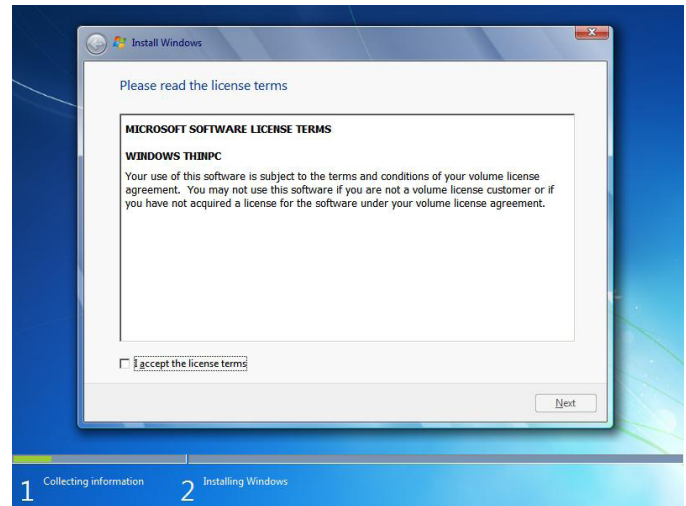


Figure 4b: VL License Terms

5. Specify the installation type as **Custom (Advanced)** to install a clean copy of Windows Thin PC.

Important

Upgrading from a prior version of Windows is not supported by Windows Thin PC.

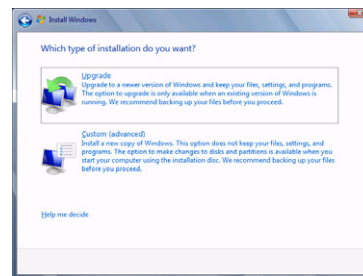


Figure 5: Installation Type

- When prompted for an installation location, select the disk drive where you want to install the operating system, and then click **Next**.

Tip

Click on **Drive options (advanced)** to expose additional functionality such as **Delete** (remove partition), **New** (new partition) and **Format** to customize the configuration of your storage device.

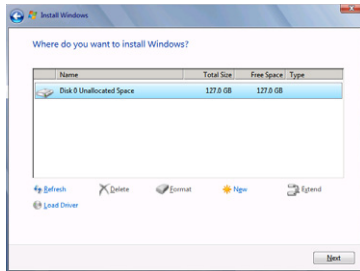


Figure 6: Installation Target

Setup will then start the installation. During this process, Setup copies Windows Thin PC to the disk you have selected. Next, Setup will install drivers for the detected hardware. This process requires several automatic restarts. When Setup finishes the installation, the operating system will be loaded and the system will be set up for first use.

- When prompted, enter a user name for the local administrator account, enter a name for the computer, and then click **Next**.

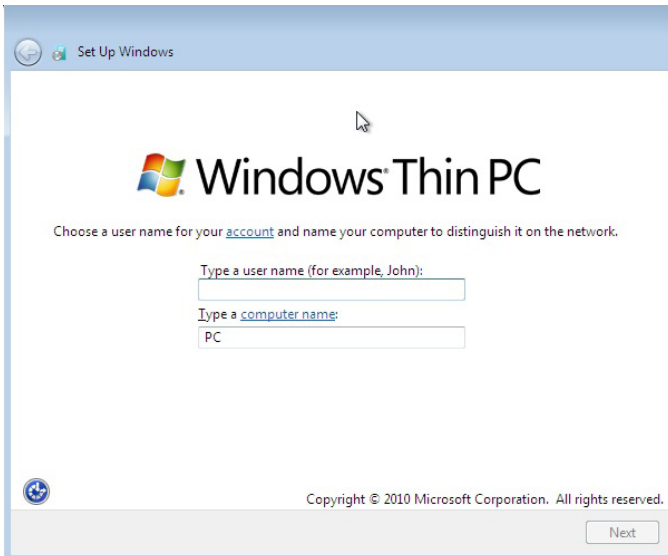


Figure 7: User Account and Computer Name

- Type and confirm a password, enter a password hint, and then click **Next**.

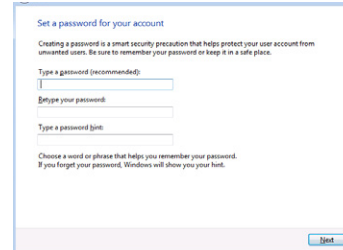


Figure 8: Password for Your Account

- When prompted for the Windows product key, skip this screen to activate the evaluation copy of Windows Thin PC:

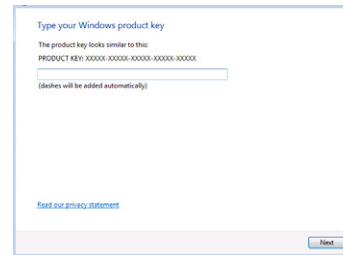


Figure 9: Product Key

Note

This is an evaluation product key that will activate the image for 90 days, however the Windows Thin PC Preview release is set to expire on 10/31/2011, after which this release will stop functioning.

10. Select a Windows Update option for the computer.

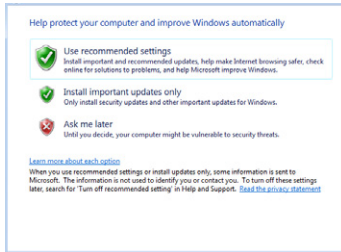


Figure 10: Updates

Note

Typically, an enterprise should manage updates from Windows Update using a centralized management solution such as Microsoft Windows Server Update Services (WSUS) or Microsoft System Center Configuration Manager. This allows the enterprise to schedule updates to specific machine groups, such as a test environment prior to advertising the updates to the production environment.

11. Review the date and time settings, make changes as necessary, and then click **Next**.

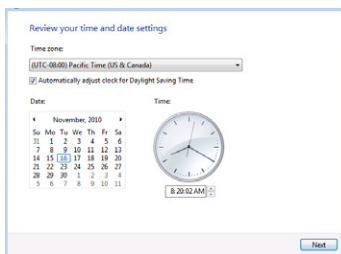


Figure 11: Time and Date Settings

12. If a network card is detected during setup, networking components are installed automatically. Based on the selection, Windows Thin PC will configure networking for this location.

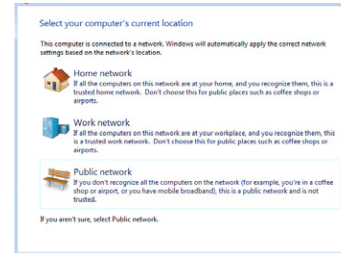


Figure 12: Current Location

13. Once Setup is finished, Windows Thin PC will prepare and display the desktop.

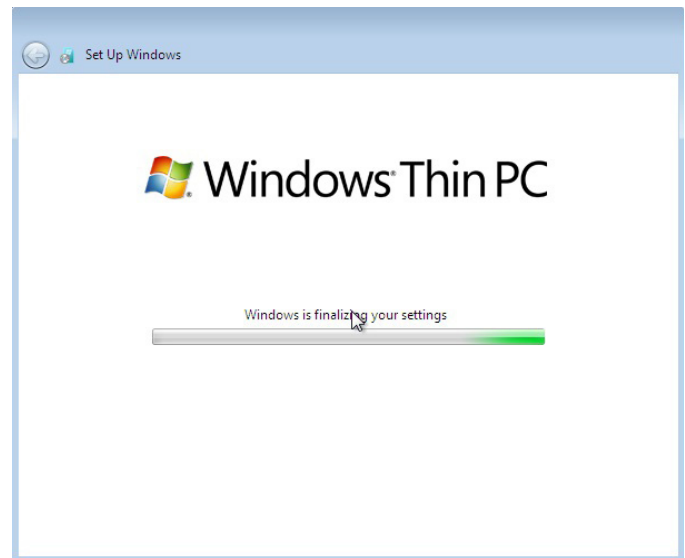


Figure 13: Finalizing Settings