

Microsoft Dynamics® AX 2009 SP1 Correction Letter (CC-e) feature for Microsoft Dynamics AX 2009

White Paper

This white paper introduces the regulatory feature for issuing the electronic correction letter document (CC-e).

July 2012
Version 1.1

www.microsoft.com/dynamics/ax

Send suggestions and comments about this document to adocs@microsoft.com. Please include the title with your feedback.



Table of Contents

Introduction.....	3
Definitions and Terms	4
Parameters	5
CC-e Return Codes.....	5
Setting up the event web services.....	6
Issuing the correction letter	7
Correction Letter Function.....	7
Appendix A – CC-e return codes.....	11
Table 1 – Approved/Processed status.	11
Table 2 – Rejected status.....	11
References	12

Introduction

This white paper introduces the regulatory feature for issuing the electronic correction letter document (CC-e).

The correction letter document is related to the fiscal document, and is meant to correct or modify information after the fiscal document is already issued. Until the introduction of this feature, the CC-e was a non-standardized paper document that contained the corrections or modifications, without any format or standard definitions.

Technical note NT2010.008, which was updated by technical note NT2011.003, introduced the specifications of the requisites and formats for communicating with the web services that receive this document electronically, in XML format. (For links to these technical notes, see the [References](#) section of this white paper.)

According to the law, use of the CC-e is allowed, provided that the changes are **not** related to the following items:

- Any data that is used to determine the tax amount, such as the base amount, tax value, price difference, quantity, amount, operation amount, or statement amount
- Issuer or receiver data
- The invoice or shipment date

Starting July 1, 2012, the correction letter can no longer be sent in paper format when the related invoice type is Electronic (NF-e).

Definitions and terms

Term	Definition
SEFAZ (Secretaria da Fazenda)	The Brazilian name for the tax authority. The government department responsible for taxes.
CC-e	Electronic correction letter. A document used to modify or correct field information that was previously issued in an electronic fiscal document.
NF-e	Brazilian federal electronic fiscal document.
NT (nota técnica, technical note)	A document that specifies updates of the NF-e project in a technical approach.

Parameters

CC-e return codes

The default return codes (see [Appendix A](#)) are shipped with the Regulatory Feature package; however, you can add records manually.

To load the default data:

1. Go to **Basic > Setup > Brazil > NFe return code** to open the **NFe return code** form.
2. In **Message Type** field, select **Correction Letter**, and then click **Load Data**.

To add rejection codes manually:

1. In the **Message Type** field, select **Correction Letter**.
2. Press CTRL+N to create a new NF-e return code.
3. In the **NFe return code** field, enter the return code based on SEFAZ return codes.
4. In the **Description** field, enter a description of the return code. The description is only informative. The description recorded in the NF-e status form is obtained from the return .txt file.
5. In the **Message type** field, enter the type of the message that is related to the return code. For the CC-e, the message type must be **Correction Letter**.
6. In the **NFe return code** field, enter the return code status. The following table describes the possible statuses.

NF-e return code status	Description
Approved	The NF-e was approved at SEFAZ.
Denied	Not applicable to the CC-e.
Rejected	The NF-e was rejected at SEFAZ. The user has to create a new correction letter and send it again to SEFAZ.
Rejected non fixable	Not applicable to the CC-e.
Discarded	Not applicable to the CC-e.
Canceled	Not applicable to the CC-e.

Set up the event web services

1. Go to **Basic > Setup > Brazil > Brazilian parameters** to open the **Brazilian parameters** form.
2. On the **NF-e (federal)** tab, add a new option:
 - **Web Service: NF-e events**
 - **Format class name: [EFDocMsgFormat XmlEvent2]**
3. Click **Generate**. The service reference is generated.

The screenshot shows the 'Brazilian parameters (1 - dat)' window with the 'NF-e (federal)' tab selected. The 'Web services' section contains a table with the following data:

Environment	Web Service	Version	Internet address	Format class name
* Testing	NF-e events	2.00	[Government event Path]	EFDocMsgFormat XmlEventV2_BR

Below the table, the 'Description' field contains the text: 'Format used to send NF-e event messages'. A 'Generate' button is located to the right of the table.

Figure 1 Brazil parameters form, NF-e (federal) tab

Note: There is a known issue when trying to generate the web services for some states. Please refer to <http://support.microsoft.com/kb/2489203> to see the steps to proceed.

Issue the correction letter

Correction Letter function

1. Go to **Accounts Receivable > Periodic > Electronic Invoice (federal) > NF-e (federal) > Functions > Correction Letter** to open the **Correction letter** form.

On the **Overview** tab, the **Sequence** field is filled in automatically.

Important: When more than one correction letter is created for the same NF-e, **only the last is considered by government**, which means that all the previously generated text must be copied to the last correction letter that is sent.

Sequence	Correction letter status	Processing date
5	Waiting to send	6/18/2012 01:40:32 pm
4	Approved	5/1/2012 05:43:15 pm
3	Rejected	12:00:00 am
2	Rejected	12:00:00 am
1	Approved	12:00:00 am

Return code

Correction letter rejection code:

Description:

Identification of line. REA gbr glp

Figure 2 Correction letter form, Overview tab

2. On the **General** tab, in the **Correction letter** field, type the content of the correction.

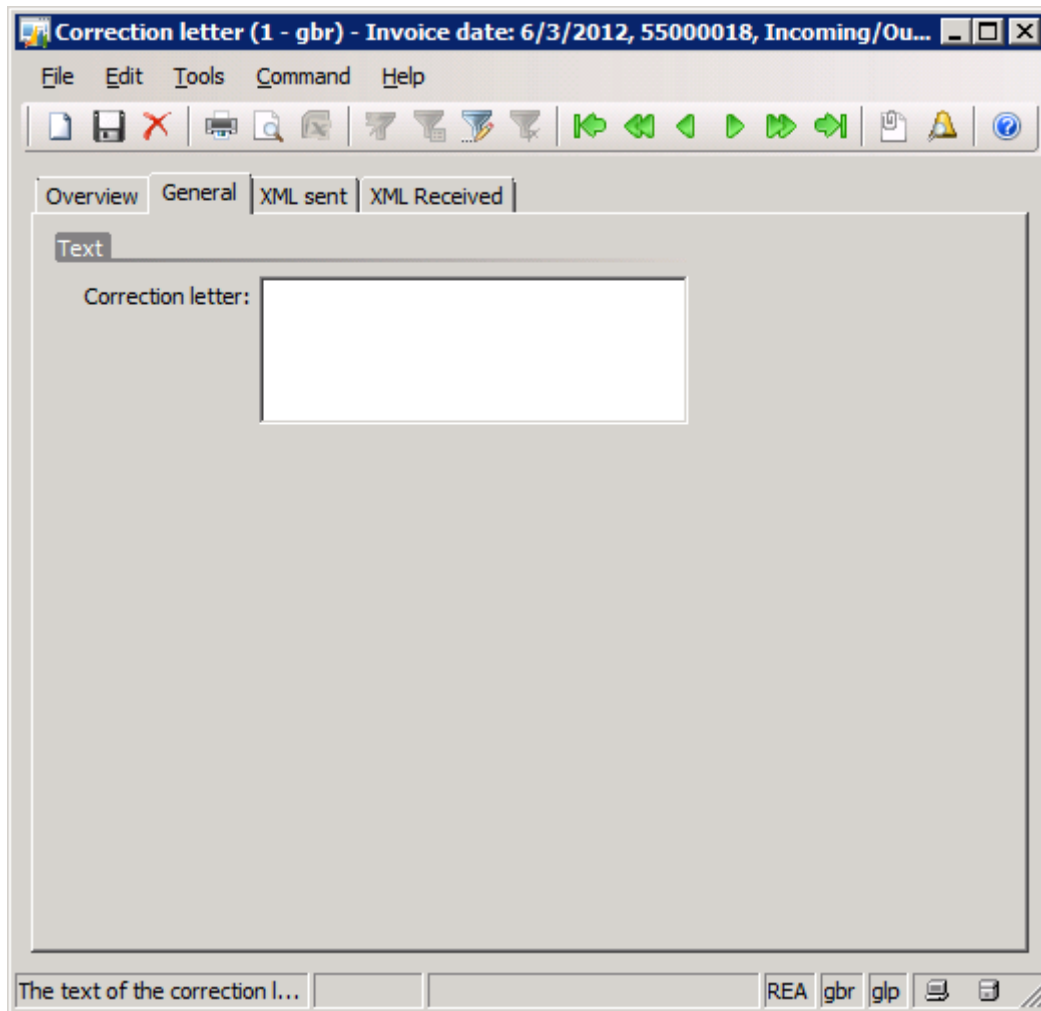


Figure 3 Correction letter field

3. When you have finished, click the **Overview** tab, and then click **Send**. The correction letter message is added to the NF-e periodic activity.
4. To send the correction letter to SEFAZ web services, go to **Accounts Receivable > Periodic > Electronic invoice (federal) > Export/import NF-e process**.

The process is now completed. You can go back to the **Correction letter** form to verify whether the correction letter was approved or rejected by SEFAZ web services. Also, the XML messages are stored, such as the return codes and messages from SEFAZ.

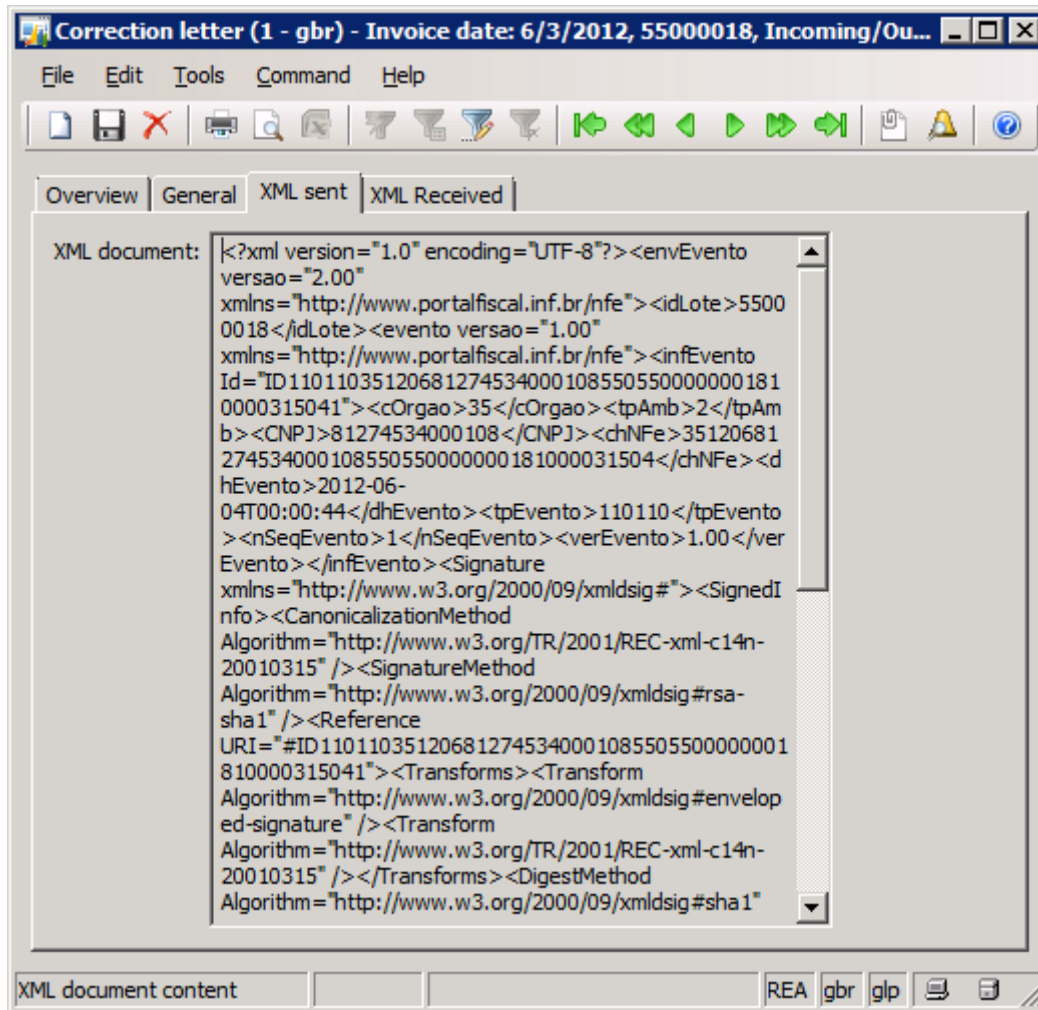


Figure 4 Correction letter XML message sent to government web services

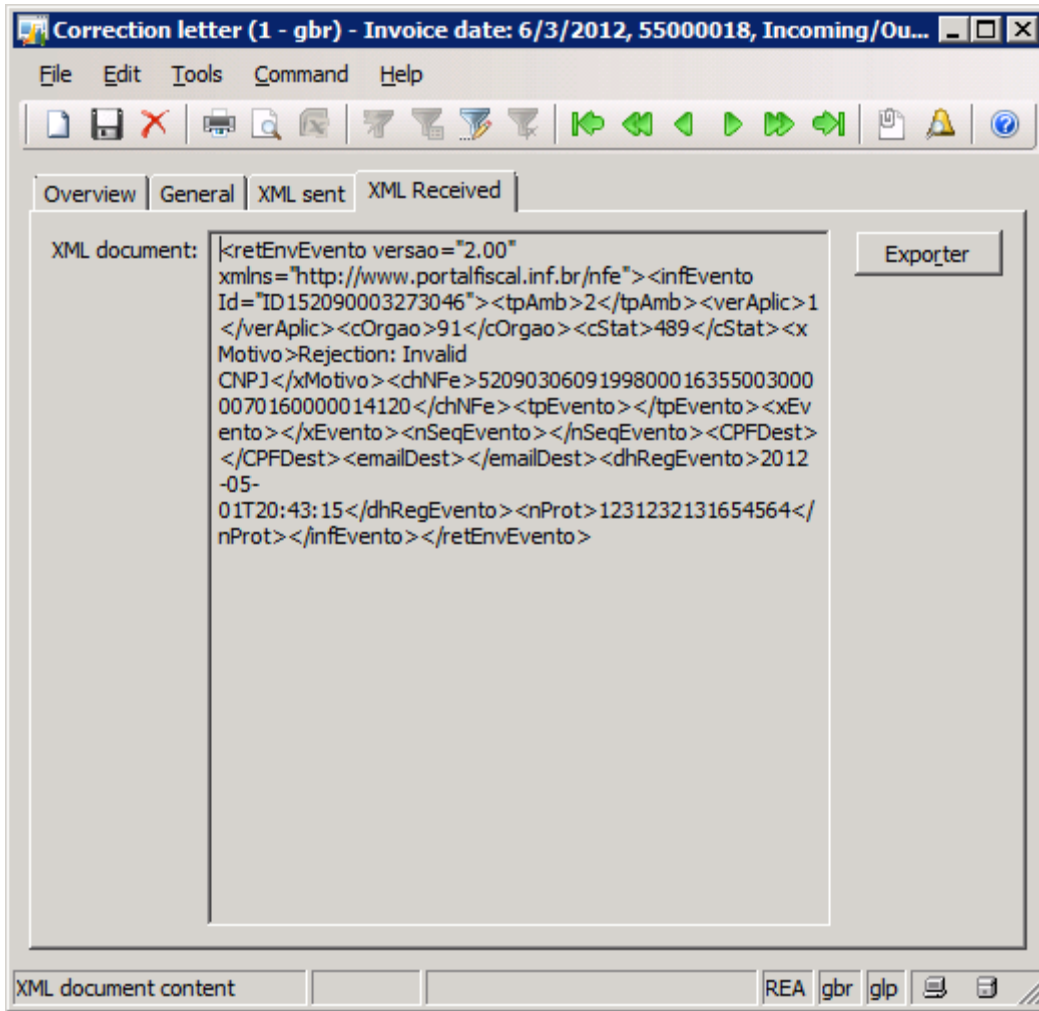


Figure 5 Correction letter XML message received from government web services

Appendix A – CC-e return codes

Table 1 – Approved/Processed status

Returned code	Description
<cStat>	<xMotivo>
135	Registered event/attached to the NF-e.
136	Registered event, but not attached to the NF-e.

Table 2 – Rejected status

Code	Rejection
<cStat>	<xMotivo>
489	Rejection: Invalid CNPJ.
490	Rejection: Invalid CPF.
491	Rejection: Invalid event type <tpEvento>.
492	Rejection: Invalid event version <verEvento>.
493	Rejection: Event is not compliant with the specific schema.
494	Rejection: Access key not found.
501	Rejection: Authorized more than 30 days ago (720 hours).
572	Rejection: Invalid field format ("ID" + tpEvento + chNFe + nSeqEvento).
573	Rejection: Event duplicated.
574	Rejection: Event author is different from the invoice issuer.
575	Rejection: Event author is different from the invoice recipient.
576	Rejection: Event author is not allowed to generate the event.
577	Rejection: Event date cannot be less than invoice date.
578	Rejection: Event date cannot be more than processing date.
579	Rejection: Event date cannot be less than the date of invoice authorized in contingency.
580	Rejection: Event requires an authorized invoice.
587	Rejection: Use only the standard NF-e namespace.
588	Rejection: Not allowed characters at the begin/end of the message or between the message tags.
594	Rejection: The sequence is greater than the expected.

References

Technical Note	URL
<p>NT2011.003 – The current technical note, containing the specification and schemas for the Electronic Correction Letter feature.</p> <p>Note: This version replaces the NT2010.008 definitions.</p>	<p>http://www.nfe.fazenda.gov.br/portal/exibirArquivo.aspx?conteudo=tsiloeZ6vBw</p>
<p>NT2010.008 – The first version of the specification and schemas for the Electronic Correction Letter feature.</p>	<p>http://www.nfe.fazenda.gov.br/portal/exibirArquivo.aspx?conteudo=ddYTwUsriLQ</p>

Microsoft Dynamics is a line of integrated, adaptable business management solutions that enables you and your people to make business decisions with greater confidence. Microsoft Dynamics works like and with familiar Microsoft software, automating and streamlining financial, customer relationship and supply chain processes in a way that helps you drive business success.

U.S. and Canada Toll Free 1-888-477-7989

Worldwide +1-701-281-6500

www.microsoft.com/dynamics

This document is provided "as-is." Information and views expressed in this document, including URL and other Internet Web site references, may change without notice. You bear the risk of using it.

Some examples depicted herein are provided for illustration only and are fictitious. No real association or connection is intended or should be inferred.

This document does not provide you with any legal rights to any intellectual property in any Microsoft product. You may copy and use this document for your internal, reference purposes. You may modify this document for your internal, reference purposes.

© 2012 Microsoft Corporation. All rights reserved.

Microsoft