



# WINDOWS HOME SERVER

Torben Vig Nelausen  
Produktchef - Windows Server Familien



# Hvad er Windows Home Server

- ◆ Centraliserede data:
  - ◆ Dokumenter, musik, video, TV osv.
- ◆ Centraliseret Backup
  - ◆ Automatiseret backup uden brugerens interaktion
- ◆ Lager uden begrænsning
  - ◆ Kan udvides efter behov
- ◆ Adgang til data
  - ◆ Transparent adgang for brugerne
  - ◆ Webadgang til alle data

# Hvad er WHS

- ◆ Status på sikkerhedsopdateringer og AV
- ◆ Mediecenter, XBOX osv kan forbruge content
- ◆ Inkluderer navn.homeserver.com

# Teknik

- ◆ Baseret på Windows 2003 server SP2
- ◆ 10 brugere/pc ere
- ◆ Drive Extender – Ny fejltolerance teknologi
- ◆ Klient support
  - ◆ Backup (XP+Vista)
  - ◆ Fildeling (Alle)
- ◆ Workgroup baseret
- ◆ Password assistent

DEMO DEMO DEMO

# OEM Designs



# Links

- ◆ [www.wegotserverd.co.uk](http://www.wegotserverd.co.uk)
- ◆ [www.whsaddins.com](http://www.whsaddins.com)
- ◆ <http://blogs.technet.com/homeserver/>
- ◆ <http://social.microsoft.com/Forums/en-US/category/WindowsHomeServer/>

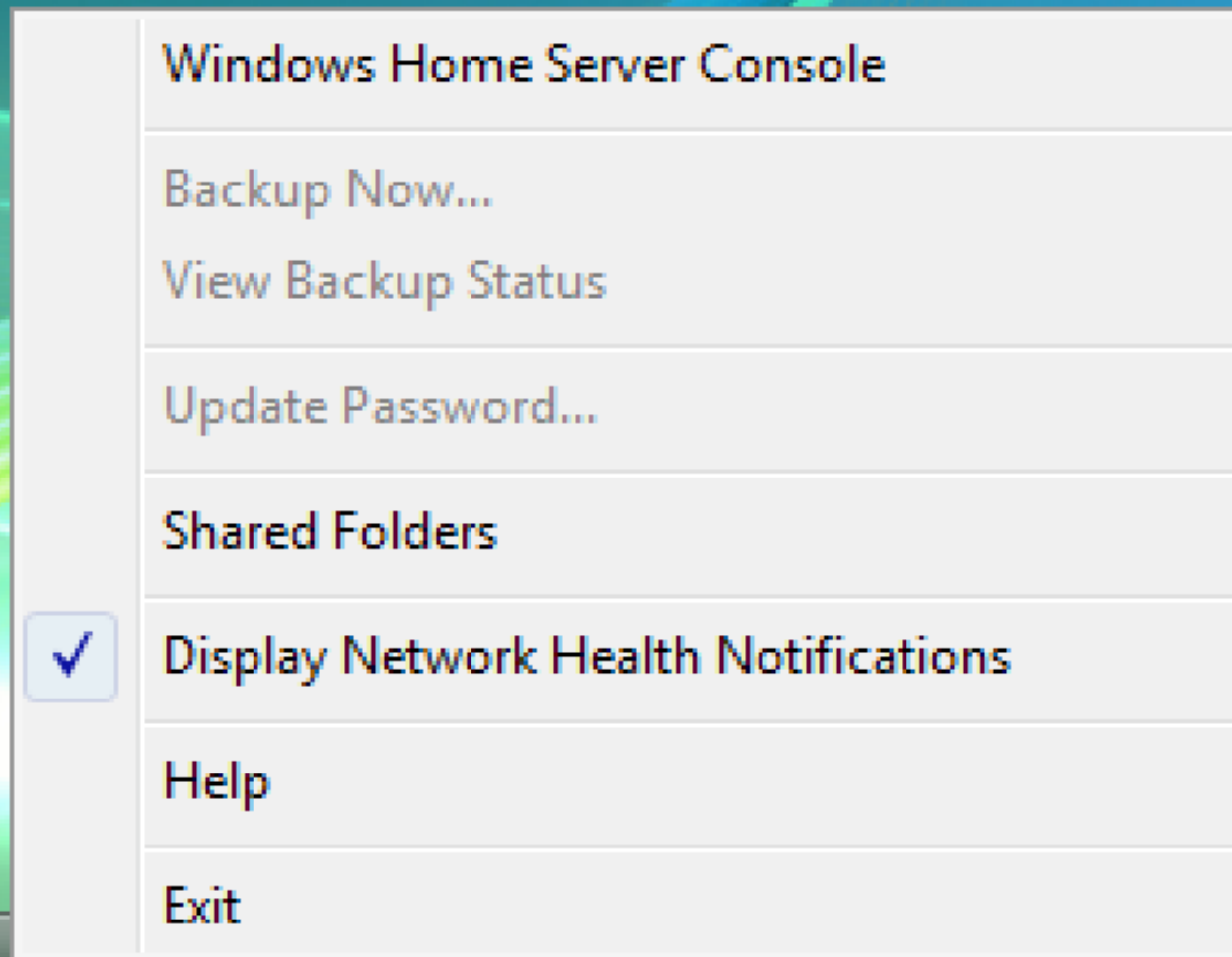
# Trial

Download trial:

<https://om.one.microsoft.com/opa/Validation.aspx?StoreID=3b8caa12-38dd-4505-9d20-2e4d23614d31&LocaleCode=en-us&JavaScriptOn=yes>



# Home Server Tray Icon





Computers & Backup | User Accounts | Shared Folders | Server Storage | Network Healthy

Settings Help

View Backups | Backup Now | Configure Backup... | Remove Computer

Name	Description	Operating System	Status
KIDS PC	New Laptop for Kids	Windows XP Professional	Backed up
KITCHEN PC	Desktop PC in Kitchen	Windows Vista Enterprise Edition	Not backed up
OFFICE PC	Dad's HP Laptop	Windows XP Professional	Backed up

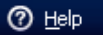
Computers  
& Backup  
User  
Accounts  
Shared  
Folders  
Server  
Storage  
Network  
Healthy  
Windows Home Server

Settings Help

Add Properties Remove

Name	Logon Name	Remote Access	Status
Guest	Guest	Not allowed	Disabled
Denise Smith	Denise	Allowed	Enabled
Jeff Smith	Jeff	Allowed	Enabled
Benjamin Smith	Ben	Not allowed	Enabled
Brian Smith	Brian	Not allowed	Enabled
Samantha Smith	Sam	Not allowed	Enabled

Storage Balanced on: 4/2/2007 11:10 AM



+ Add    Properties    Open    Remove

Name	Description	Used Space	Duplication	Status
Videos	Shared folder for videos	62.09 GB	Off	Healthy
Software	Shared folder for software installation programs	175.73 MB	Off	Healthy
Public	Shared folder for miscellaneous files	270.54 MB	Off	Healthy
Photos	Shared folder for photos	5.58 GB	Off	Healthy
Music	Shared folder for music	Empty	Off	Healthy
Sam	Personal folder for Sam	Empty	Off	Healthy
Jeff	Personal folder for Jeff	Empty	Off	Healthy
Denise	Personal folder for Denise	Empty	Off	Healthy
Brian	Personal folder for Brian	Empty	Off	Healthy
Ben	Personal folder for Ben	Empty	Off	Healthy

Storage Balanced on: 4/2/2007 11:10 AM



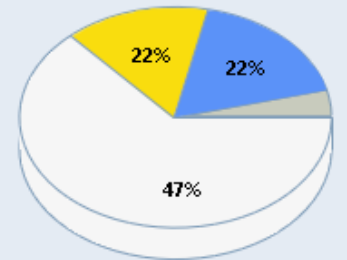
Settings Help

+ Add    ⚙ Repair    ✕ Remove

Name	Capacity	Location	Status
<b>Storage Hard Drives</b>			
ST380811AS	74.53 GB	Internal (ATA)	Healthy
ST3120211AS	111.79 GB	Internal (ATA)	Healthy
ST3120211AS	111.79 GB	Internal (ATA)	Healthy

### Server Storage

Total Size: **298.11 GB**  
Free Space: **140.59 GB**



- Shared Folders (68.1 GB)
- PC Backups (68.1 GB)
- Operating System (10 GB)
- Free Space (140.59 GB)

Storage Balanced on: 4/2/2007 11:10 AM

Windows Home Server Console

Computers & Backup | User Accounts | Shared Folders | Server Storage | Network Healthy

Settings Help

View Backups | Backup Now | Configure Backup... | **Windows Home Server Settings**

Name	Description
KIDS PC	New Laptop for Kids
KITCHEN PC	Desktop PC in Kitchen
OFFICE PC	Dad's HP Laptop

- General
- Backup**
- Passwords
- Media Sharing
- Remote Access
- Add-ins
- Resources

**Shut Down**

**Backup Time**

Home computers are backed up during the backup time.

Start time: 12:00 AM End time: 6:00 AM

[Learn more about what happens during the Backup Time](#)

**Automatic Backup Management**

Number of months to keep the monthly backup: 3

Number of weeks to keep the weekly backup: 3

Number of days to keep the daily backup: 3

[Which backup is chosen as the monthly, weekly, or daily backup?](#)

**Backup Cleanup**

Backup Cleanup automatically deletes old backups during the Backup Time on Sundays. You can also click Cleanup Now to start Backup Cleanup.

**Cleanup Now**

[What is Backup Cleanup?](#)

OK Cancel Apply Help

Storage Balanced on: 4/2/2007 11:10 AM