

# Windows Essential Business Server 2008

## Del 1 af 3 - Planlægning og migrering



Windows® Essential  
Server Solutions



Windows®  
Essential Business Server 2008

### Claus Petersen

Sr. Partner Technology Specialist  
*Core Infrastructure*  
[cpeters@microsoft.com](mailto:cpeters@microsoft.com)



### Torben Nelausen

Product Solution Manager  
*Windows Server, SQL Server & BizTalk server*  
[torben.nelausen@microsoft.com](mailto:torben.nelausen@microsoft.com)



# Agenda

- ▶ Introduction to EBS
- ▶ Planning and Preparation Wizards
- ▶ Installing Windows EBS 2008
- ▶ Migration
- ▶ Next Steps and Resources
- ▶ Q&A



# Right Solutions For The Right Customer



# Windows Essential Server Solutions “Family”

{ Enterprise-class Server Solutions, Designed and Priced for SMB }



## Designed & Priced for SMBs

- Fully versioned, integrated technologies in best practice deployment
- Simplified purchasing and licensing
- Standardized, extensible platform ideal for LOB Applications

## Less Complexity & More Control

- Simplified management with centralized admin console
- Streamlined setup, deployment, maintenance and management
- Familiar Windows-based experience; leverage existing IT skills

## Grows Business Capacity

- Freedom to work from anywhere and with mobile devices
- Reliable, scalable platform enables growth and less downtime
- Cost-savings vs. standalone products lowers cost of acquisition



Small Business Server 2008 Standard



Small Business Server 2008 Premium



Essential Business Server 2008 Standard



Essential Business Server 2008 Premium

# Windows Essential Business Server 2008

## Standard Edition



### Management Server

- ▶ Windows Server 2008
  - ▶ Networking
  - ▶ Active Directory
  - ▶ File and Print
- ▶ Windows SharePoint Services 3.0
- ▶ System Center Essentials



### Messaging Server

- ▶ Windows Server 2008
- ▶ Exchange Server 2007
- ▶ Forefront Security for Exchange Server



### Security Server

- ▶ Windows Server 2008
- ▶ Exchange Server 2007
- ▶ Forefront Threat Management Gateway, Medium Business Edition

## Premium Edition



### Standard Edition, Plus...



### Database Server

- ▶ Windows Server 2008
- ▶ SQL Server 2008 Standard Edition

1 product,  
1 price, 1 CAL

Integrated  
setup and  
Migration

300+ pages of  
best practices  
built in

Unified,  
extensible  
Console

Supports  
300 users or  
devices

# EBS User Interface

The screenshot displays the Windows Essential Business Server Administration Console. The top navigation bar includes icons for System Health, Security, Computers and Devices, Users and Groups, Licenses, System Applications, and Business Applications. The main content area is titled 'Health Monitor' and contains a table of system health indicators.

Status	Indicator	Workload	Refresh I...
Log on to domain	Key services and components that enable users to access network services		
Send and receive e-mail	Key services and components that enable e-mail delivery		
Critical	Microsoft Exchange Mail Submission service status on the Mes...	Send and receive e-mail	5 minutes
Normal	Messaging Server network-adapter configuration	Send and receive e-mail	5 minutes
Normal	Microsoft Exchange Active Directory Topology service status on...	Send and receive e-mail	5 minutes
Normal	Microsoft Exchange ADAM service status on the Security Server	Send and receive e-mail	5 minutes
Normal	Microsoft Exchange File Distribution service status on the Mess...	Send and receive e-mail	5 minutes
Normal	Microsoft Exchange Information Store service status on the Me...	Send and receive e-mail	5 minutes
Normal	Microsoft Exchange Mailbox Assistants service status on the M...	Send and receive e-mail	5 minutes
Normal	Microsoft Exchange Service Host service status on the Messagi...	Send and receive e-mail	5 minutes
Normal	Microsoft Exchange System Attendant service status on the Me...	Send and receive e-mail	5 minutes
Normal	Microsoft Exchange Transport service status on the Messagina ...	Send and receive e-mail	5 minutes

Below the table, a detailed alert is shown for the 'Microsoft Exchange Mail Submission service status on the Messaging Server'. The alert is categorized as 'Critical' and includes the following details:

- Status:** Critical
- Workload:** Send and receive e-mail
- Description:** The Microsoft Exchange Mail Submission service is required for Microsoft Exchange to provide e-mail services.
- Alert Time:** 6/16/2008 10:50:30 AM
- Refresh Interval:** 5 minutes
- Recommendation:** To start the service on the Messaging Server:
  1. Click "Start Services console" on the Administration Console.
  2. Start the Microsoft Exchange Mail Submission service.

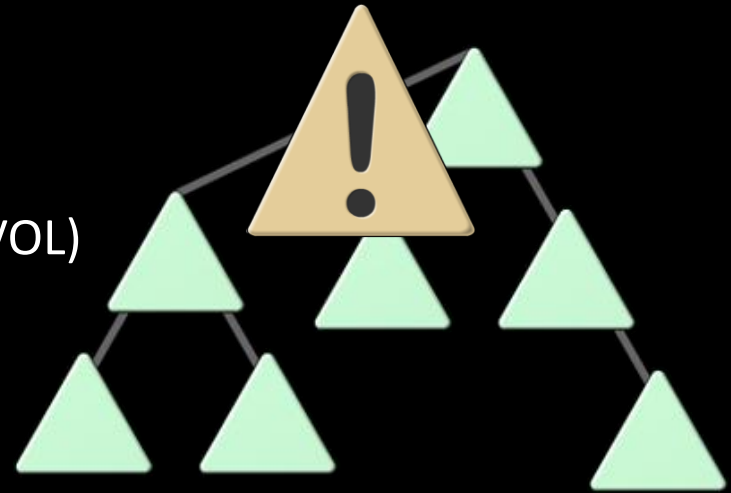
On the right side of the console, a sidebar titled 'Microsoft Exchange Mail Submission service status on the Messaging Server Tasks' provides quick actions:

- Start Event Viewer
- Start Services console
- Connect to server

The bottom of the console shows the 'Start' button and the 'Windows Essential Business Server' logo.

# Preparation and Planning Wizards

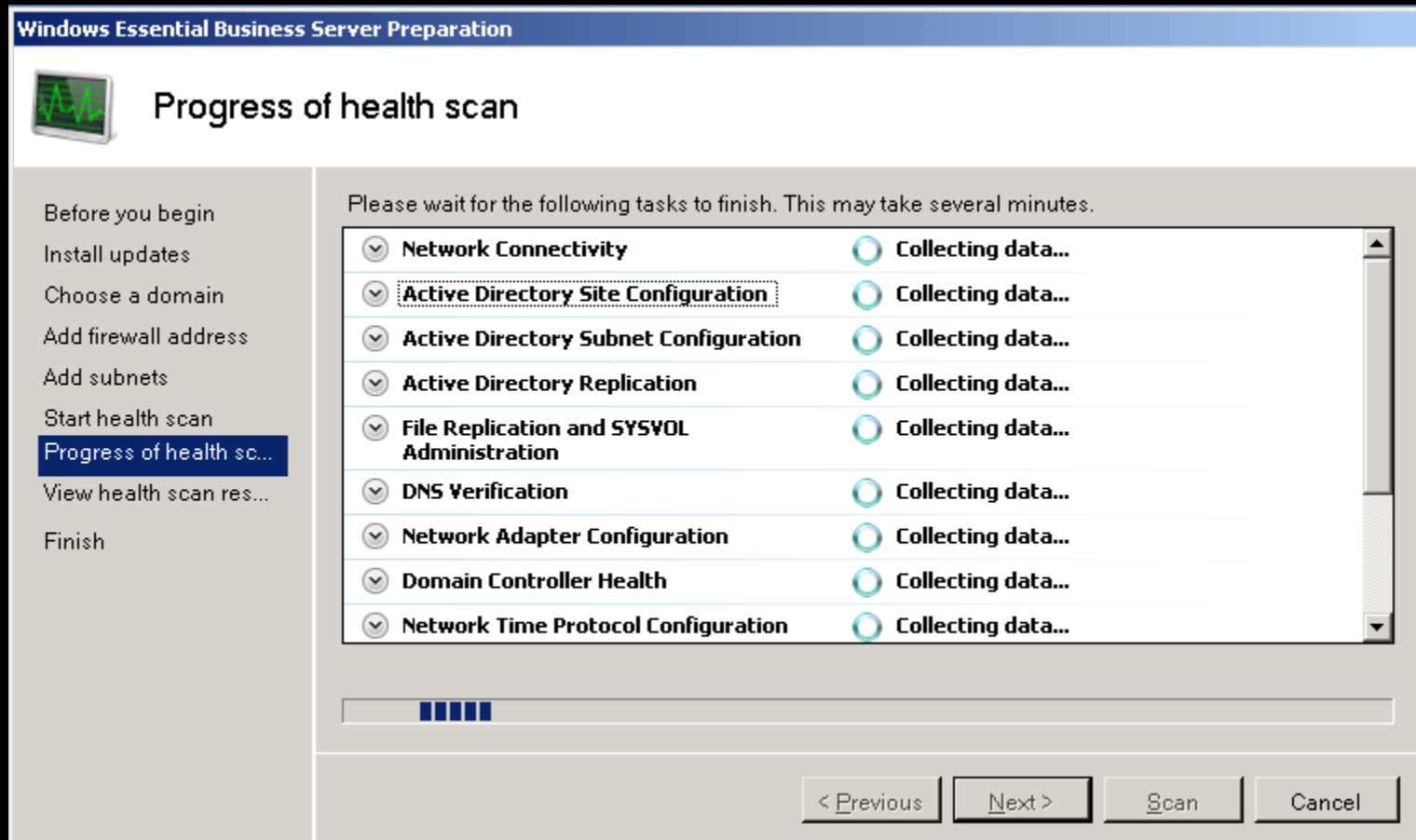
- ▶ Windows Essential Business Server Preparation Wizard performs over 100 infrastructure health checks
  - ▶ DNS configuration
    - ▶ Orphaned records
  - ▶ AD health
    - ▶ Convergence/replication testing (SYSVOL)
    - ▶ Integration mismatches
    - ▶ Broken delegation
    - ▶ Orphaned records
  - ▶ Network connectivity problems
    - ▶ Ghost NICs
    - ▶ Binding order (TIP: Internal network MUST be on first NIC)
    - ▶ 169.254.x.x addressing (automatic private IP)
  - ▶ Exchange Health Checks



# Preparation Wizard Demo



# Preparation Wizard in SBS env.



# Preparation Wizard

Windows Essential Business Server Preparation

## Progress of health scan

Before you begin  
Install updates  
Choose a domain  
Add firewall address  
Add subnets  
Start health scan  
**Progress of health scan**  
View health scan results  
Finish

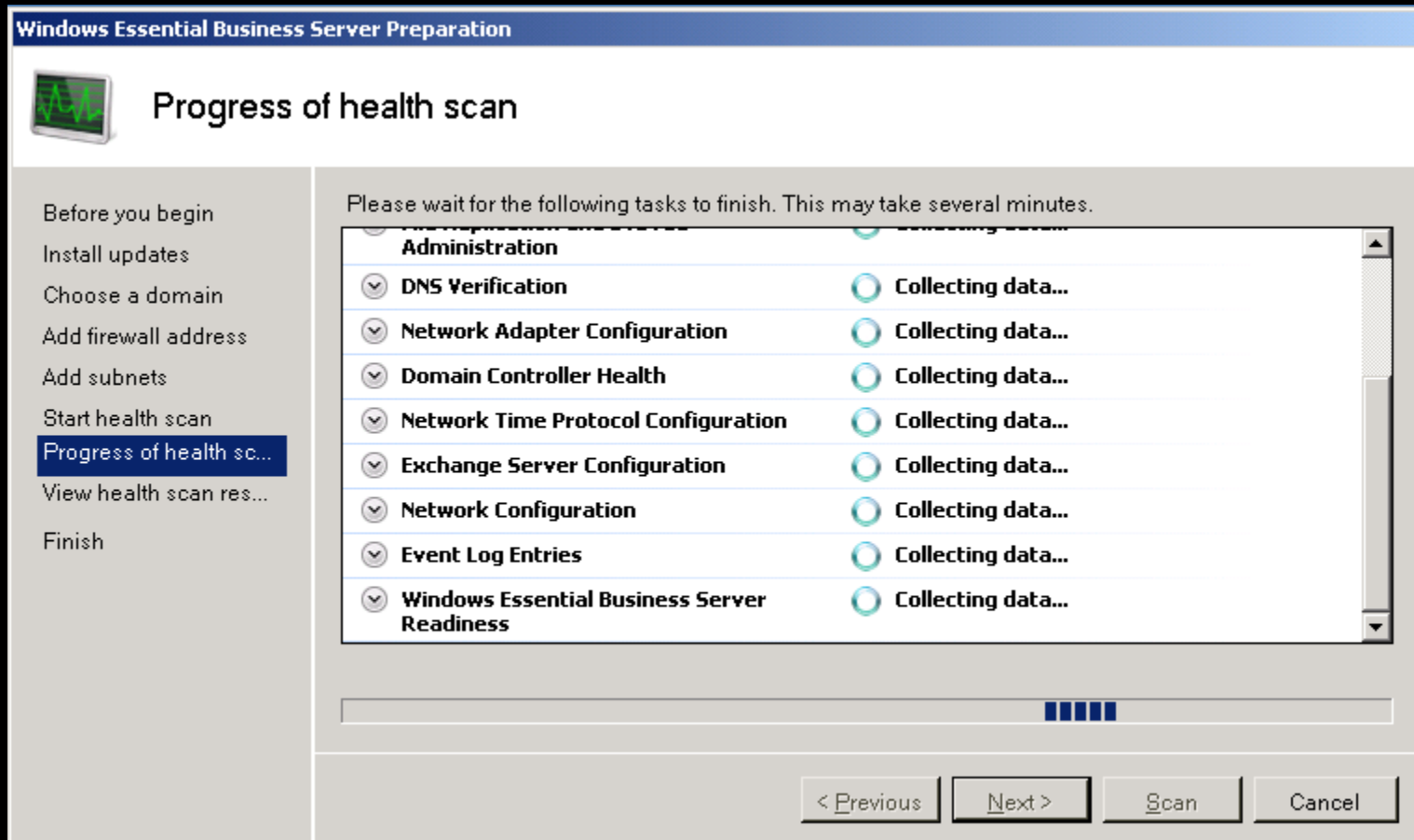
Please wait for the following tasks to finish. This may take several minutes.

Network Connectivity	Collecting data...
Active Directory Site Configuration	Collecting data...
Inter-site topology generation is enabled for the Knowledge Consistency Checker Collecting data...	
Intra-site topology generation is enabled for the Knowledge Consistency Checker Collecting data...	
Local Active Directory site contains only local subnets Collecting data...	
Universal group membership is cached Collecting data...	
Domain controllers are holding roles Collecting data...	
Active Directory site is contained in a site link	

Progress bar: [|||||]

< Previous   Next >   Scan   Cancel

# Preparation Wizard



# Preparation Wizard

Windows Essential Business Server Preparation

## View health scan results

Before you begin  
Install updates  
Choose a domain  
Add firewall address  
Add subnets  
Start health scan  
Progress of health sc...  
**View health scan res...**  
Finish

The health scan is finished. You can correct the issues that were reported and then click Scan to verify the corrections.

**Network Connectivity** **Errors (5)**

**Server names resolve correctly**  
✓ Completed

**Active Directory is connected to all domain controllers**  
✗ The JULIAK-MGMT.fakey.com server could not be accessed using WMI. Actions that you can perform to resolve this issue might include stopping the firewall before you run the wizard, ensuring that the server is available, installing WMI provider on a Windows 2000 server, enabling WMI access on the server, or removing the server object from Active Directory Sites and Services if the server has been decommissioned.

**Remote WMI access is enabled on servers**

Total ✗ Errors 6 ⚠ Warnings 0 ? Skipped 94

[View Results](#)

[Need Help? Find a Microsoft Small Business Specialist or Certified Partner Near You](#)

< Previous Finish Scan Cancel

# Preparation Wizard

C:\Windows Essential Business Server\Wizards\Data\ScanAnalysis.htm - Microsoft Internet Explorer provided by Hamilton Island We

C:\Windows Essential Business Server\Wizards\Data\ScanAnalysis.htm

Windows Essential Business Server

## Preparation Wizard Report

Errors and warnings [Show all checks](#)

### Active Directories Subnet Configuration ✖ Errors: 5, Warnings: 2

**Missing subnet definitions**

- Warning:** The IP address 192.168.16.2 of server `hwsrvr.hamiltonislandweddings.local` is not contained within an AD-defined subnet.  
See also: [Step-by-Step Guide to Active Directory Sites and Services](#)
- Warning:** The IP address 230.89.143.129 of server `hwsrvr.hamiltonislandweddings.local` is not contained within an AD-defined subnet.  
See also: [Step-by-Step Guide to Active Directory Sites and Services](#)
- Error:** Server `hwsrvr.hamiltonislandweddings.local` does not contain an IP Address with an AD-defined subnet.  
See also: [Step-by-Step Guide to Active Directory Sites and Services](#)

**DCs in sites with conflicting subnet definitions**

- Error:** The IP address, 192.168.16.2, for the DC, `hwsrvr.hamiltonislandweddings.local`, is not contained within the site, Default-First-Site-Name, that the DC is located in.  
See also: [Step-by-Step Guide to Active Directory Sites and Services](#)
- Error:** The IP address, 230.89.143.129, for the DC, `hwsrvr.hamiltonislandweddings.local`, is not contained within the site, Default-First-Site-Name, that the DC is located in.  
See also: [Step-by-Step Guide to Active Directory Sites and Services](#)
- Error:** The DC, `hwsrvr.hamiltonislandweddings.local`, does not have an IP address that matches the subnet definitions for the site, Default-First-Site-Name, that the DC is located in.  
See also: [Step-by-Step Guide to Active Directory Sites and Services](#)

**Sites with no subnet definitions**

- Error:** The AD site Default-First-Site-Name does not have any subnets.  
See also: [Step-by-Step Guide to Active Directory Sites and Services](#)

### File System Replication and administrative shares ⚠ Warnings: 2

**Insufficient free space on SYSVOL**

- Warning:** The volume holding SYSVOL has less than 1 GB free space on DC `hwsrvr.hamiltonislandweddings.local`.

# Planning Wizard Demo



## Before you begin

### Before you begin

- Install updates
- Confirm network topo...
- About your firewall
- Plan network firewall
- Plan firewall addresses
- Record firewall rules
- Plan RWW and SAN
- Plan network settings ...
- Save planning data
- Finish

This wizard helps you perform the following tasks to plan the deployment of Windows Essential Business Server:

- Confirm the network settings that you provided in the Preparation Wizard.
- Collect information about the settings that you will apply in Windows Essential Business Server.

You will print this information as a formatted report to guide your deployment of Windows Essential Business Server. Data that the wizard collects is also stored so that you can begin the Installation Wizard. No settings are changed on your computer or network.

[Download the Windows Essential Business Server Preparation and Planning Guide from the Microsoft Web site.](#)



< Previous

Next >

Finish

Cancel



## Install updates

Before you begin

**Install updates**

Confirm network topo...

About your firewall

Plan network firewall

Plan firewall addresses

Record firewall rules

Plan RWW and SAN

Plan network settings ...

Save planning data

Finish

You can update the wizard with the most recent Microsoft updates. Click Update to connect to the Microsoft Update Web site and apply the updates.

If you do not want to update the wizard, clear the check box on this page.

☒ Install all available updates (recommended).

[Read the Windows Essential Business Server Privacy Statement](#)

< Previous

Next >

Update

Cancel





## Install updates

Before you begin

**Install updates**

Confirm network topo...

About your firewall

Plan network firewall

Plan firewall addresses

Record firewall rules

Plan RWW and SAN

Plan network settings ...

Save planning data

Finish

You can update the wizard with the most recent Microsoft updates. Click Update to connect to the Microsoft Update Web site and apply the updates.

If you do not want to update the wizard, clear the check box on this page.

☐ Install all available updates (recommended).

[Read the Windows Essential Business Server Privacy Statement](#)

< Previous

Next >

Finish

Cancel



## Confirm your network topology

Before you begin

Install updates

Confirm network topo...

About your firewall

Plan network firewall

Plan firewall addresses

Record firewall rules

Plan RWW and SAN

Plan network settings ...

Save planning data

Finish

The following topology is based on information that you provided in the Preparation Wizard. (Not all network detail is shown.) If the topology that is shown on this page is correct, click Next.

### Single-subnet network

All of the computers and network devices are connected on a single subnet.



**i** To correct this topology, click Cancel. Then run the Preparation Wizard again to add or modify settings for your subnets. More information is in the Preparation and Planning Guide.

< Previous

Next >

Finish

Cancel



## About your firewall

- Before you begin
- Install updates
- Confirm network topo...
- About your firewall**
- Plan network firewall
- Plan firewall addresses
- Record firewall rules
- Plan RWW and SAN
- Plan network settings ...
- Save planning data
- Finish

Identify how your Internet gateway or firewall device is now managed and configured.

How is your Internet gateway or firewall device managed?

- ☒ On-site by in-house IT staff
- ☐ Off-site by a vendor or outside organization

Is the external IP address of the firewall DHCP-assigned or static?

- ☒ DHCP-assigned
- ☐ Static

Does your firewall run a DHCP service to assign IP addresses to other computers in your network?

- ☐ Yes
- ☒ No

< Previous

Next >

Finish

Cancel

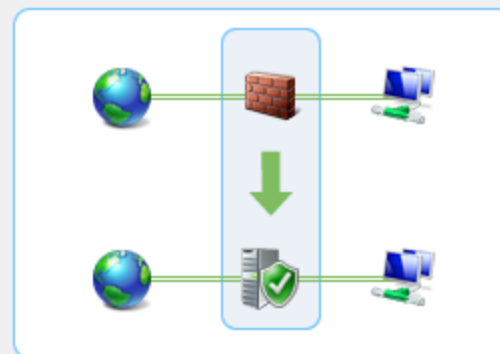


## Plan network firewall for Essential Business Server

- Before you begin
- Install updates
- Confirm network topo...
- About your firewall
- Plan network firewall**
- Plan firewall addresses
- Record firewall rules
- Plan RWW and SAN
- Plan network settings ...
- Save planning data
- Finish

Windows Essential Business Server installs a network firewall (Forefront Threat Management Gateway, Medium Business Edition) on the Security Server. You can replace your existing firewall with the Security Server, or you can deploy the Security Server behind your existing firewall.

- ☒ **R**eplace the existing firewall with the Security Server.
- ☐ **D**eploy the Security Server behind the existing firewall (advanced).



For help choosing how to use the network firewall in Windows Essential Business Server, see the Preparation and Planning Guide.

< Previous

Next >

Finish

Cancel

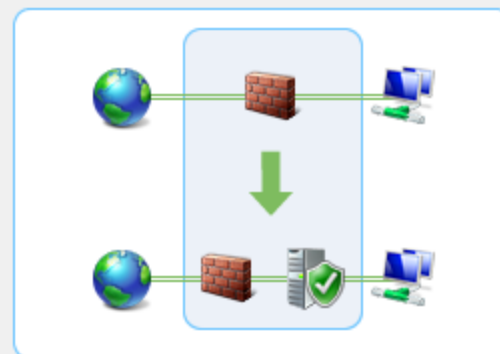


## Plan network firewall for Essential Business Server

- Before you begin
- Install updates
- Confirm network topo...
- About your firewall
- Plan network firewall**
- Plan firewall addresses
- Record firewall rules
- Plan RWW and SAN
- Plan network settings ...
- Save planning data
- Finish

Windows Essential Business Server installs a network firewall (Forefront Threat Management Gateway, Medium Business Edition) on the Security Server. You can replace your existing firewall with the Security Server, or you can deploy the Security Server behind your existing firewall.

- ☐ Replace the existing firewall with the Security Server.
- ☒ Deploy the Security Server behind the existing firewall (advanced).



For help choosing how to use the network firewall in Windows Essential Business Server, see the Preparation and Planning Guide.

< Previous

Next >

Finish

Cancel



## Plan firewall addresses

- Before you begin
- Install updates
- Confirm network topo...
- About your firewall
- Plan network firewall
- Plan firewall addresses**
- Record firewall rules
- Plan RWW and SAN
- Plan network settings ...
- Save planning data
- Finish

The Security Server must use the network address settings of the firewall that it replaces. Type the addresses on this page (if it does not already show the addresses).



① External

External IP address:

Dynamic

② Internal

Internal IP address:

192 . 168 . 1 . 1

Subnet mask:

255 . 255 . 255 . 0

For help with the network address settings for your firewall, see the Preparation and Planning Guide.

< Previous

Next >

Finish

Cancel



## Record firewall rules

Before you begin  
Install updates  
Confirm network topo...  
About your firewall  
Plan network firewall  
Plan firewall addresses  
**Record firewall rules**  
Plan RWW and SAN  
Plan network settings ...  
Save planning data  
Finish

Record the rules that your current firewall uses. Later, you will recreate these firewall rules on the Security Server to maintain Internet connections.

Name	Action	Port	From	To

[Add rule...](#)[Edit rule...](#)[Delete rule...](#)

If you are using ISA Server as your network firewall, you can export the firewall policy rules to a file. For more information, see the Preparation and Planning Guide.

[< Previous](#)[Next >](#)[Finish](#)[Cancel](#)



## Plan Remote Web Workplace and SAN configuration

- Before you begin
- Install updates
- Confirm network topo...
- About your firewall
- Plan network firewall
- Plan firewall addresses
- Record firewall rules
- Plan RWW and SAN**
- Plan network settings ...
- Save planning data
- Finish

Remote Web Workplace (RWW) provides Web access to resources in Windows Essential Business Server. You can configure the URL for RWW (for example, remote.adventure-works.com) with a trusted public certificate. (You must obtain the certificate separately.)

☐ I already have a public certificate from a trusted issuer.

Windows Essential Business Server can store application data remotely on a storage area network (SAN).

☐ I will configure the servers for Windows Essential Business Server to store data on a SAN.

For more information about configuring RWW and SAN storage, see the Preparation and Planning Guide.

< Previous

Next >

Finish

Cancel

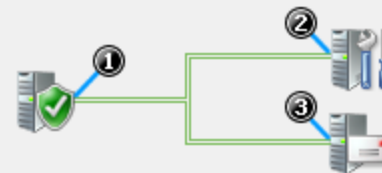




## Plan network settings for the servers

- Before you begin
- Install updates
- Confirm network topo...
- About your firewall
- Plan network firewall
- Plan firewall addresses
- Record firewall rules
- Plan RWW and SAN
- Plan network settings ...**
- Save planning data
- Finish

Type the network settings and machine names you will assign to the three servers for Windows Essential Business Server.



### ① Security Server

Internal IP address:

Server name:

### ② Management Server

IP address:

Server name:

### ③ Messaging Server

IP address:

Server name:

For help with planning these network settings, see the Preparation and Planning Guide.

< Previous

Next >

Finish

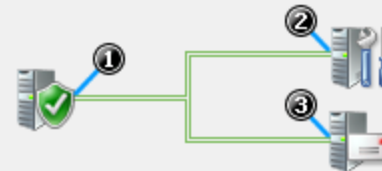
Cancel



## Plan network settings for the servers

- Before you begin
- Install updates
- Confirm network topo...
- About your firewall
- Plan network firewall
- Plan firewall addresses
- Record firewall rules
- Plan RWW and SAN
- Plan network settings ...**
- Save planning data
- Finish

Type the network settings and machine names you will assign to the three servers for Windows Essential Business Server.



### ① Security Server

Internal IP address:

Server name:

### ② Management Server

IP address:

Server name:

### ③ Messaging Server

IP address:

Server name:

For help with planning these network settings, see the Preparation and Planning Guide.

< Previous

Next >

Finish

Cancel



## Save planning data

- Before you begin
- Install updates
- Confirm network topo...
- About your firewall
- Plan network firewall
- Plan firewall addresses
- Record firewall rules
- Plan RWW and SAN
- Plan network settings ...
- Save planning data**
- Finish

The data that is collected in this wizard is required to deploy Windows Essential Business Server.

Save the planning data to an XML file. The file is required when you install Windows Essential Business Server. It is recommended that you copy the XML file to portable storage media, such as a USB drive.

Save...

Open the Planning Wizard Report, which contains your planning information and guidance to install Windows Essential Business Server. Save and print this report for reference.

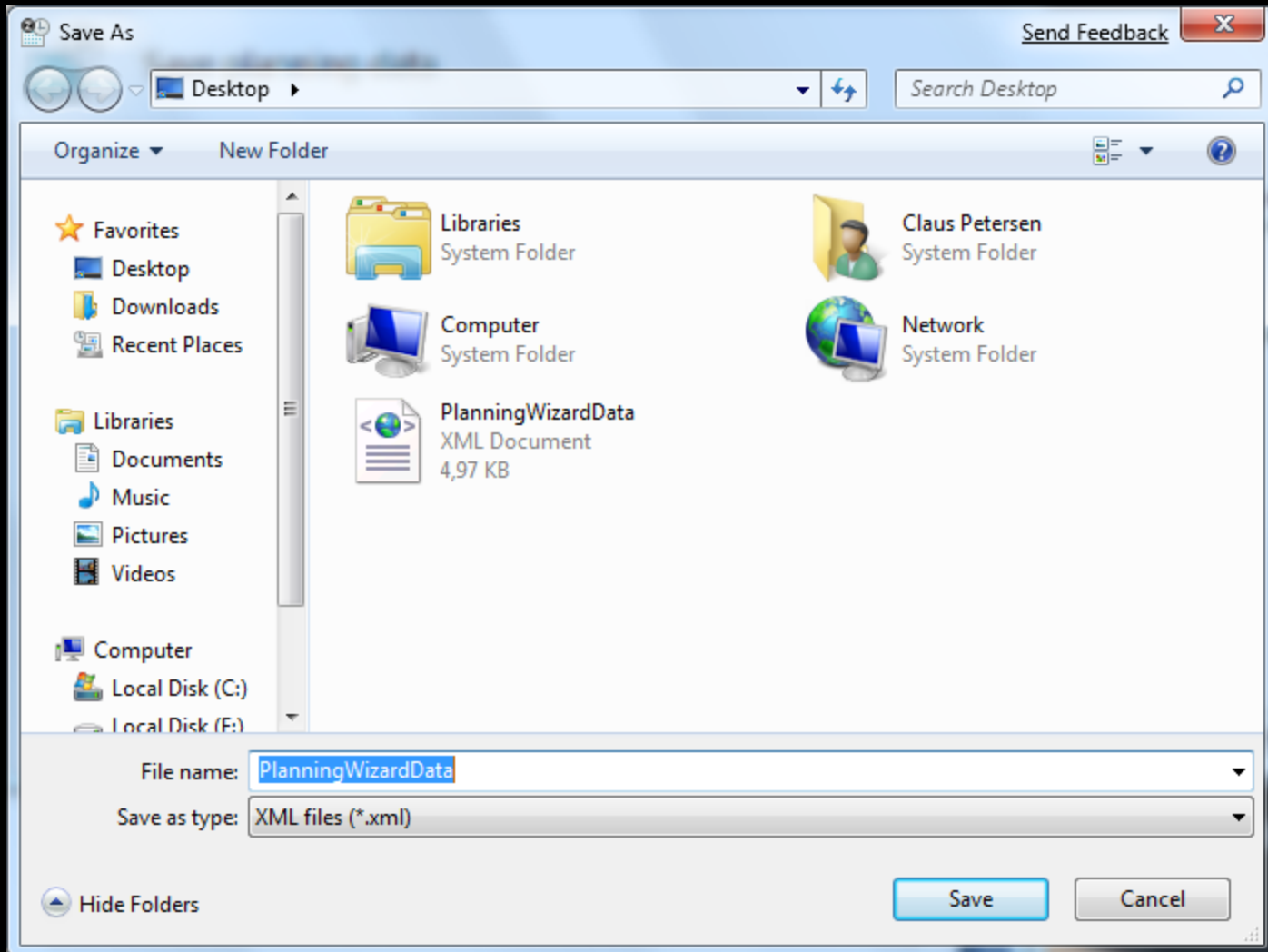
Open report...

< Previous

Next >

Finish

Cancel



# Planning Wizard Report

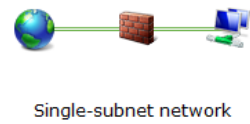
Version 6.0.5700.0, completed 29-01-2009



You completed Step 1: Preparation Wizard and Step 2: Planning Wizard of your Windows Essential Business Server deployment.

This report contains the data that you collected in the Planning Wizard. Use this data to help complete the installation of the servers (Steps 3, 4, and 5) and the configuration and migration tasks (Step 6). Begin installation within 30 days.

Guidance in this report is based on your network type:



## Before you continue

Download [Windows Essential Business Server Installation](http://go.microsoft.com/fwlink?LinkId=117271) (http://go.microsoft.com/fwlink?LinkId=117271) for step-by-step installation instructions.

Obtain product keys for Windows EBS and purchase client access licenses (CALs) for network users or devices.



## Step 3: Management Installation

You plan to create a new Active Directory forest and domain for Windows EBS. When prompted by the Management Server Installation Wizard, provide the XML file that you saved in the Planning Wizard. In the Management Server Installation Wizard, assign the following permanent names and IP addresses to the servers for Windows EBS. The server names cannot be changed after they are assigned.

Server	Name	IP Address	Subnet Mask	Default Gateway
Management	EBSMG1	192.168.1.10	255.255.255.0	192.168.1.1
Security	EBSSEC	192.168.1.1	255.255.255.0	n/a
Messaging	EBSMESS	192.168.1.11	255.255.255.0	192.168.1.1

Note: The Installation Wizard also needs to assign a temporary IP address to each server to download updates from Microsoft Update. For these temporary connections, use either a DHCP-assigned address or a static IP address that is valid for your network. For more information, see the Installation Guide.

You plan to replace your existing firewall device with the Security Server.



## Step 4: Security Installation

When prompted by the Security Server Installation Wizard, remove your existing firewall device from the network and integrate the Security Server. For more information, see the Installation Guide.

You need physical access to your firewall device to integrate the Security Server into your network.

Assign the following permanent IP address settings to the external network adapter and the internal network adapter of the Security Server.

C:\Windows Essential Business Server\Wizards\Data\PlanningReport.htm

Send Feedback

Live Search

★ Favorites

Get More Add-ons

Customize Links

Microsoft Virtualization

Optimization

Security Community

Suggested Sites

Terminas Services Pilot

WWE – Startside – Ikke go...

C:\Windows Essential Business Server\Wizards\D...

Page

Safety

Tools

### Step 4: Security Installation

When prompted by the Security Server Installation Wizard, remove your existing firewall device from the network and integrate the Security Server. For more information, see the Installation Guide. You need physical access to your firewall device to integrate the Security Server into your network. Assign the following permanent IP address settings to the external network adapter and the internal network adapter of the Security Server.

External IP Address	Subnet Mask	Default Gateway
DHCP-assigned	DHCP-assigned	DHCP-assigned

Internal IP Address	Subnet Mask
192.168.1.1	255.255.255.0

### Step 5: Messaging Installation

In the Messaging Server Installation Wizard, confirm the permanent IP address settings for the internal network adapter. You assigned this address when you installed the Management Server.

IP Address	Subnet Mask	Default Gateway
192.168.1.11	255.255.255.0	192.168.1.1

### Step 6: Configuration and Migration Tasks

After you install the servers for Windows EBS, complete the configuration and migration tasks that make your network fully functional. The Guided Configuration and Migration Tasks page on the Management Server provides guidance for completing these tasks. Use the following planning data to help complete some tasks.

#### Configure subnets

Use the following information to configure subnet settings in Forefront Threat Management Gateway on the Security Server.

Default Gateway	Subnet Mask	VPN	Connection Speed
192.168.1.1	255.255.255.0	No	DSL/Broadband/T1/LAN (>=256 kbps)

#### Configure firewall rules

Use the following information to re-create your firewall rules in Forefront Threat Management Gateway on the Security Server. If you exported your existing firewall rules, refer to the data that you exported.

Name	Action	Port	From	To
------	--------	------	------	----

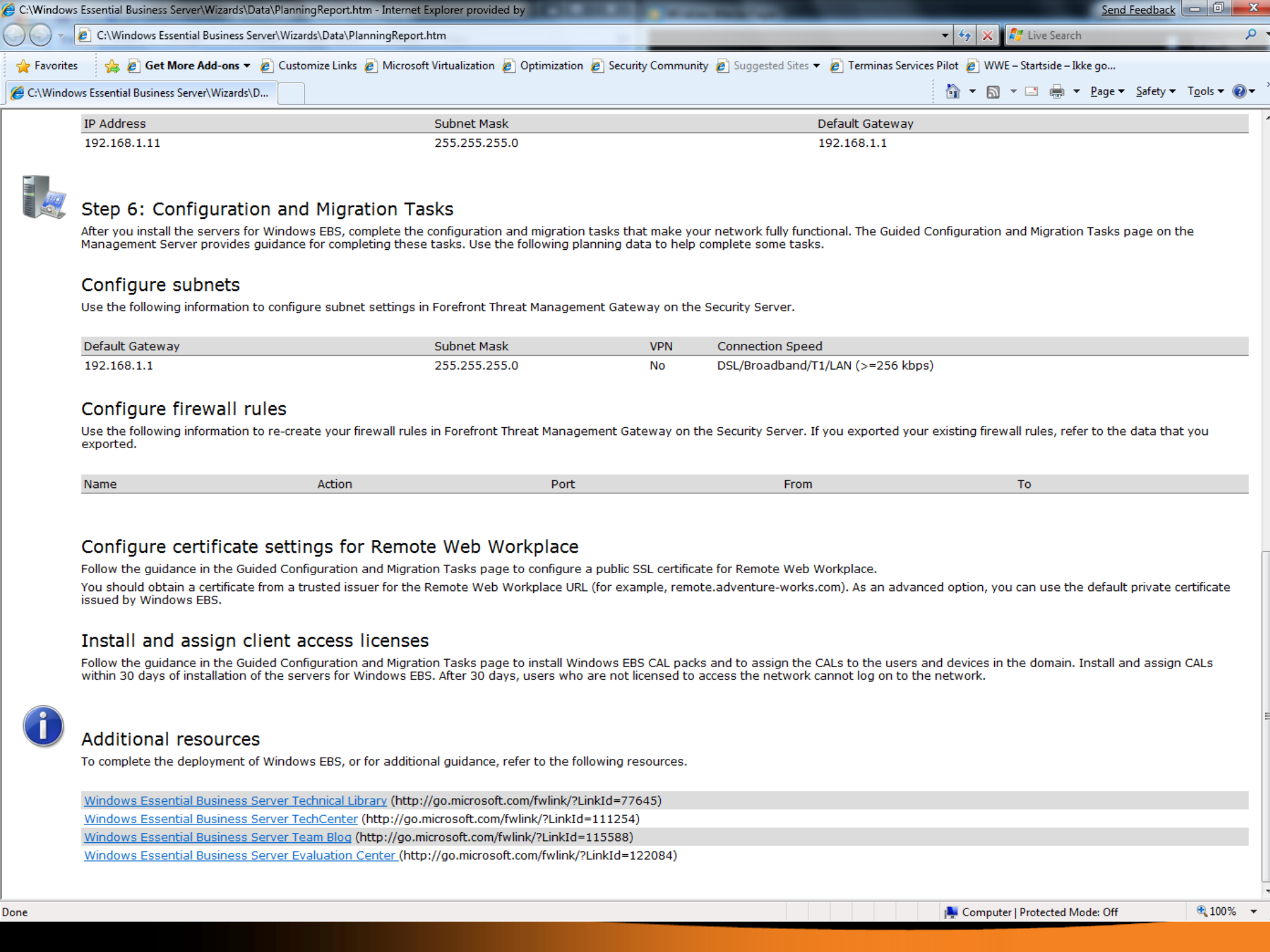
#### Configure certificate settings for Remote Web Workplace

Follow the guidance in the Guided Configuration and Migration Tasks page to configure a public SSL certificate for Remote Web Workplace. You should obtain a certificate from a trusted issuer for the Remote Web Workplace URL (for example, remote.adventure-works.com). As an advanced option, you can use the default private certificate

Done

Computer | Protected Mode: Off

100%



IP Address	Subnet Mask	Default Gateway
192.168.1.11	255.255.255.0	192.168.1.1



## Step 6: Configuration and Migration Tasks

After you install the servers for Windows EBS, complete the configuration and migration tasks that make your network fully functional. The Guided Configuration and Migration Tasks page on the Management Server provides guidance for completing these tasks. Use the following planning data to help complete some tasks.

### Configure subnets

Use the following information to configure subnet settings in Forefront Threat Management Gateway on the Security Server.

Default Gateway	Subnet Mask	VPN	Connection Speed
192.168.1.1	255.255.255.0	No	DSL/Broadband/T1/LAN (>=256 kbps)

### Configure firewall rules

Use the following information to re-create your firewall rules in Forefront Threat Management Gateway on the Security Server. If you exported your existing firewall rules, refer to the data that you exported.

Name	Action	Port	From	To
------	--------	------	------	----

### Configure certificate settings for Remote Web Workplace

Follow the guidance in the Guided Configuration and Migration Tasks page to configure a public SSL certificate for Remote Web Workplace.

You should obtain a certificate from a trusted issuer for the Remote Web Workplace URL (for example, remote.adventure-works.com). As an advanced option, you can use the default private certificate issued by Windows EBS.

### Install and assign client access licenses

Follow the guidance in the Guided Configuration and Migration Tasks page to install Windows EBS CAL packs and to assign the CALs to the users and devices in the domain. Install and assign CALs within 30 days of installation of the servers for Windows EBS. After 30 days, users who are not licensed to access the network cannot log on to the network.



### Additional resources

To complete the deployment of Windows EBS, or for additional guidance, refer to the following resources.

[Windows Essential Business Server Technical Library](http://go.microsoft.com/fwlink/?LinkId=77645) (http://go.microsoft.com/fwlink/?LinkId=77645)

[Windows Essential Business Server TechCenter](http://go.microsoft.com/fwlink/?LinkId=111254) (http://go.microsoft.com/fwlink/?LinkId=111254)

[Windows Essential Business Server Team Blog](http://go.microsoft.com/fwlink/?LinkId=115588) (http://go.microsoft.com/fwlink/?LinkId=115588)

[Windows Essential Business Server Evaluation Center](http://go.microsoft.com/fwlink/?LinkId=122084) (http://go.microsoft.com/fwlink/?LinkId=122084)



## Finish

- Before you begin
- Install updates
- Confirm network topo...
- About your firewall
- Plan network firewall
- Plan firewall addresses
- Record firewall rules
- Plan RWW and SAN
- Plan network settings ...
- Save planning data
- Finish**

You collected all the information that you need to deploy Windows Essential Business Server. You are ready to start installing Windows Essential Business Server. You will refer to your Planning Wizard Report during the installation.

To continue, click Close. Then insert Disc 2 into the computer that you will use as the Windows Essential Business Server Management Server.

[Download the Windows Essential Business Server Installation Guide from the Microsoft Web site.](#)



Preparation  
Wizard



Planning  
Wizard



Management  
Installation



Security  
Installation



Messaging  
Installation



Configuration  
and Migration

< Previous

Next >

Finish

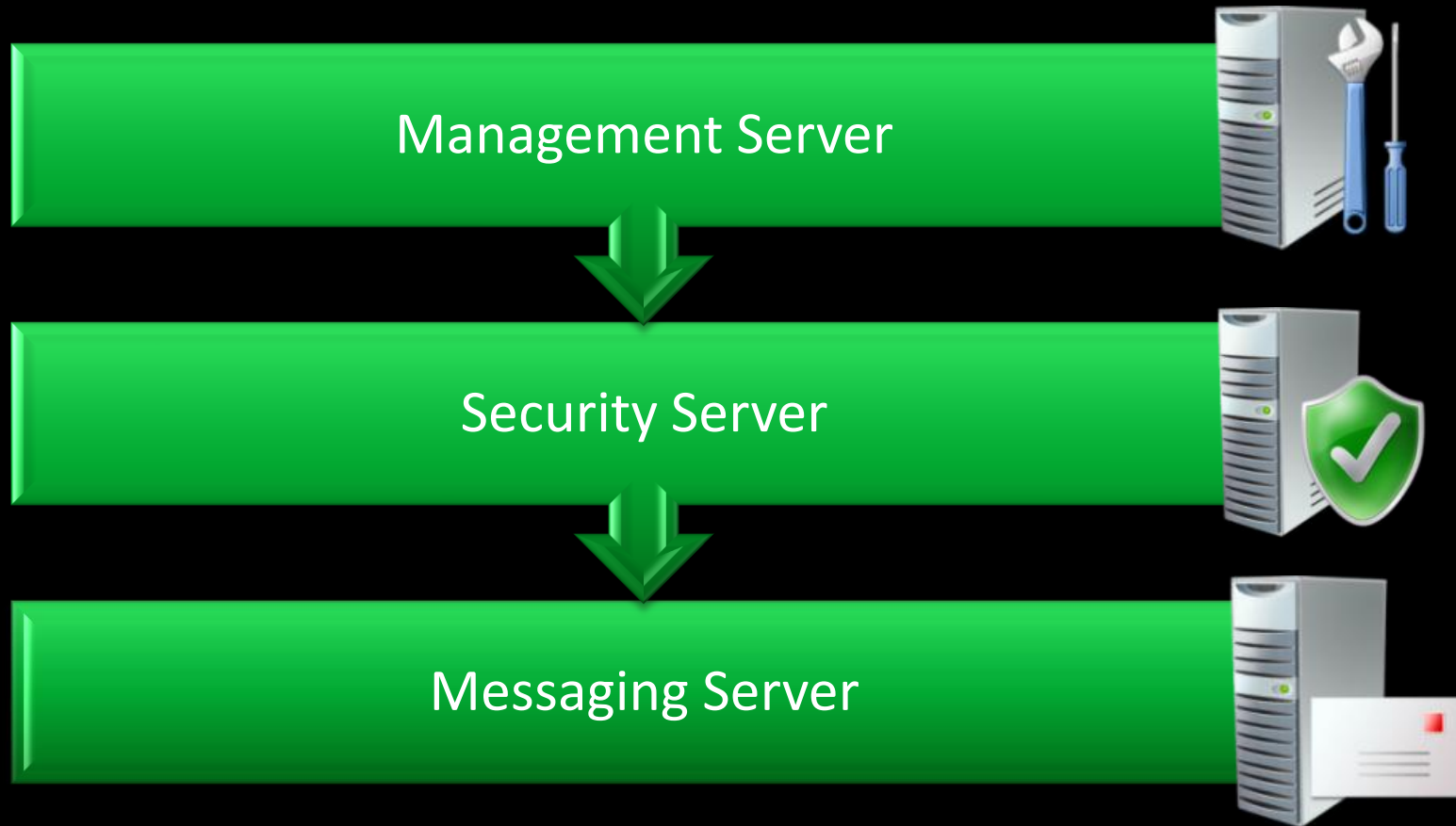
Close



# Installing Windows Essential Business Server 2008

- ▶ Installing the Management Server
- ▶ Installing the Security Server
- ▶ Installing the Messaging Server
- ▶ Installing the Troubleshooting Tool

# Installation Sequence of Windows Essential Business Server 2008



# Windows EBS Installation Wizard

Checks the existing environment for potential compatibility issues

Assists making required changes to the existing environment

Installs Windows Essential Business Server sequentially on three servers

Performs initial configuration that:

- Joins Active Directory Domain Services domain or creates a new Active Directory Domain Services forest and domain
- Establishes Internet access
- Downloads the latest security updates
- Secures servers running Windows Essential Business Server

# Network Operation & Security During Installation

Installation process minimizes interruptions and demands on current network services

Installation Wizard explains when these outages occur and what processes take place when they happen

Server roles are updated with current security updates during installation



# Installing the Management Server



# Management Server Installation Summary

## Application, Roles and Services installed

- Active Directory components
- Certificate services
- Domain Name System (DNS) service
- DHCP Server service (optional installation)
- Exchange Server management tools
- File Server role
- Threat Management Gateway (formerly called ISA Server) management tools
- Internet Information Services (IIS)
- Microsoft® SQL Server® Express
- Microsoft® System Center Essentials
- Network Protection service
- Print Server role
- Remote Assistance optional component
- Terminal Services RemoteApp™
- Windows Server® 2008
- Windows Essential Business Server Administration Console
- Windows Essential Business Server licensing service
- Windows Server Update Services (WSUS—installed as a component of System Center Essentials)

# Management Server Installation Summary

## Network Status

- Management Server is assigned a name and a static IP address
- Active Directory is configured in one of the following two options:
  - Management Server is joined to an existing Active Directory domain as a domain controller
  - Management Server is the domain controller for a new domain in a new forest
- DNS is configured in one of the following two options:
  - Management Server is the preferred DNS server
  - existing DNS server is the preferred DNS server, and the Management Server is the alternate DNS server
- Management Server DHCP scope is defined, if selected as an option
- Windows Essential Business Server DHCP service is started, if selected as an option
- Management Server internal adapter points to the network default gateway
- Windows Firewall service on the Management Server configured with default firewall exceptions for Windows Essential Business Server.

# Installing the Security Server





# Security Server Installation Summary

## Applications, Roles and Services installed

- Active Directory Lightweight Directory services
- Exchange Server Edge transport
- Exchange Intelligent Message filter
- Threat Management Gateway
- Remote Web Workplace
- Routing and remote access service
- System Center Operations Manager agent
- SQL Server Express (required for Threat Management Gateway logging)
- Windows Server 2008

# Security Server Installation Summary

## Network status

- Security Server is assigned a name and a static IP address
- Security Server is joined to the selected Active Directory domain
- Windows Firewall on the Security Server is configured with Windows Essential Business Server default firewall exceptions
- Security Server is established as the default gateway for the network
- Security Server provides firewall and other security roles to the network
- A previous gateway device is reconfigured to be an additional firewall between the Security Server and the Internet, if chosen as an option. If not chosen to retain previous gateway device, it is decommissioned.
- Default Threat Management Gateway publishing rules are configured
- E-mail is forwarded to the existing e-mail server, if specified
- Exchange Server Connector settings are configured

# Installing the Messaging Server



# Messaging Server Installation Summary

## Applications, Roles and Services installed

- Domain Name System (DNS) Server service
- Exchange Server 2007 Client Access Server (CAS), Mailbox (MBX), and Hub Transport (HUB) roles
- Microsoft® Forefront™ Security for Exchange Server
- Internet Information Services (IIS)
- Network Policy Server (NPS)
- Operations master roles:
  - Domain naming master
  - Infrastructure master
  - Primary Domain Controller (PDC) Emulator  
Note This role is not moved immediately during installation. It is transferred after Windows Essential Business Server has been running for several hours.
  - Relative ID master
  - Schema master
- Terminal Services Gateway
- System Center Operations Manager agent
- Windows Essential Business Server licensing service
- Windows Server 2008

# Messaging Server Installation Summary

## Network status

- Messaging Server is assigned a name and a static IP address
- Messaging Server is joined to the selected Active Directory domain
- Messaging Server is a domain controller and a Global Catalog server
- Messaging Server is set as the alternate DNS server
- Data from the existing domain is replicated to the Messaging Server. The replicated data includes the following:
  - Active Directory schema
  - Active Directory data
  - Integrated DNS data
  - SYSVOL data
- internal network adapter points to the network default gateway
- Exchange Server Connectors point to Threat Management Gateway for e-mail routing
- All operations master (also known as flexible single master operations or FSMO) roles are transferred to the Messaging Server
- Windows Firewall on the Messaging Server is configured with the Windows Essential Business Server default firewall exceptions

# Installing the Troubleshooting Tool



# Accessing Windows Server 2008 During Installation

Press SHIFT + F10

- Type control [ENTER] (Control Panel)
- Type devmgmt.msc [ENTER] (Device Manager)
- Type ISCSIconfig.exe [ENTER] (Connect to SAN)
- Type explorer [ENTER] (Windows Explorer)
- Type cmd [ENTER] (Command Prompt)

BE PATIENT

- Any extraneous setup or configuration before Installation Wizard finishes risks an installation failure

# Resolving and Avoiding Installation Problems

## Recover from Installation Errors

- Correct and Retry
- Restart Failed Server Installation
  - Bare Metal Installation (Format and Restart)

## AVOID Installation Errors

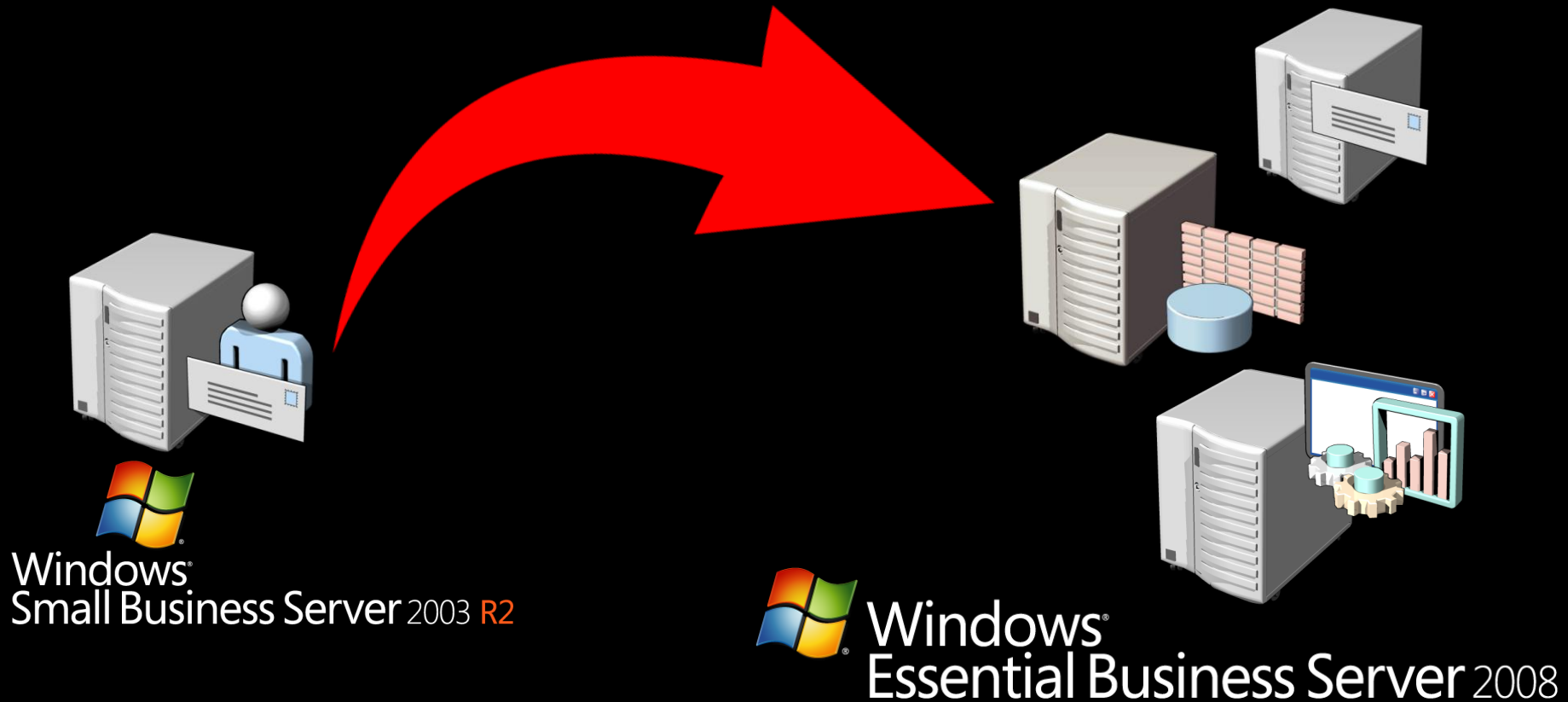
- Set BIOS Clock On All Servers Before Starting
- Leave Active Directory and DNS Alone During Installation
- Use Preparation and Planning Wizards



# Installation Walkthrough

12 hidden slides following...

# Migrate to Windows EBS 2008



# Migration Phases

Prepare SBS network

Install EBS into SBS network

Change SBS network

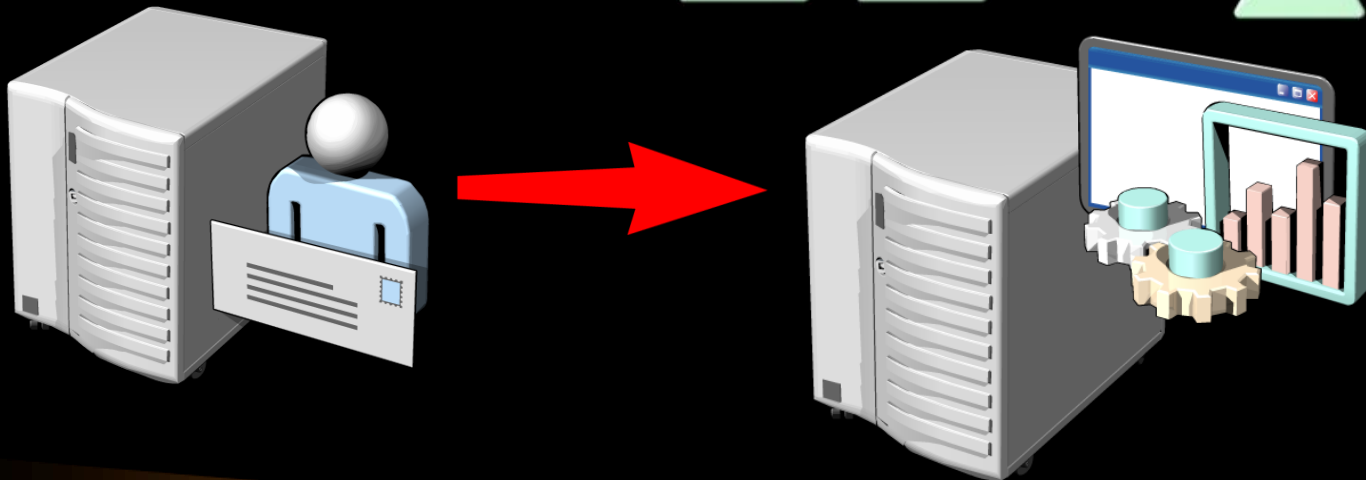
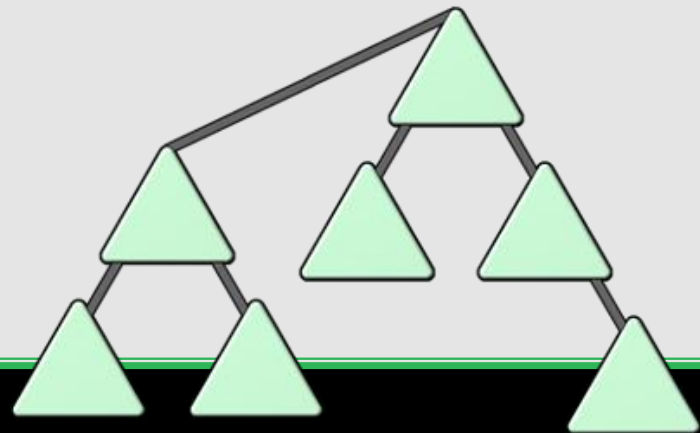
Remove SBS




# Join the Existing SBS Active Directory

## Essential Business Server joins the SBS Active Directory

- Transfers FSMO roles
- Security Server becomes firewall
- Management Server becomes
  - DNS Server
  - DHCP Server



# Migration Tasks




## Guided Configuration and Migration Tasks

The configuration and migration checklist guides you through the final configuration steps of the Windows Essential Business Server servers and the migration of your existing data. Completing these tasks is highly recommended to enable all of your product features.

[Windows Essential Business Server Web Site](#)  
[Add-in Catalog Web site](#)

#	Task	Status
1	Install the Management Server	Finished
2	Install the Security Server	Finished
3	Install the Messaging Server	Finished
4	Configure subnets	Finished
5	Configure site-to-site VPN	Finished
6	Configure firewall rules	Finished
7	Migrate DNS	Finished
8	Migrate DHCP	Finished
9	Configure management tools	Finished
10	Activate the servers	Finished
11	Configure DNS Sender ID	Finished
12	Configure DNS for RWW	Finished
13	Migrate the Exchange Server mailboxes	Finished
14	Move the user scripts and profiles	Finished
15	Discover computers and devices	Finished
16	Configure software update rules	Finished
17	Move Active Directory roles	Finished
18	Configure SharePoint Services	Finished
19	Install client access licenses	Finished
20	Assign client access licenses	Finished
21	Finish configuration	Finished



### Configure the rules that are used to download, approve, and install software updates

Less than 30 minutes to complete

Windows Essential Business Server manages Microsoft software updates for the managed computers in your network. You must configure the download, approval, and installation settings for these software updates.

1. Click Start the Update Management Settings Wizard, and then follow the instructions in the wizard.

Start the Update Management Settings Wizard

2. After you finish this task, mark it as complete.

Mark task as finished  
move to next task

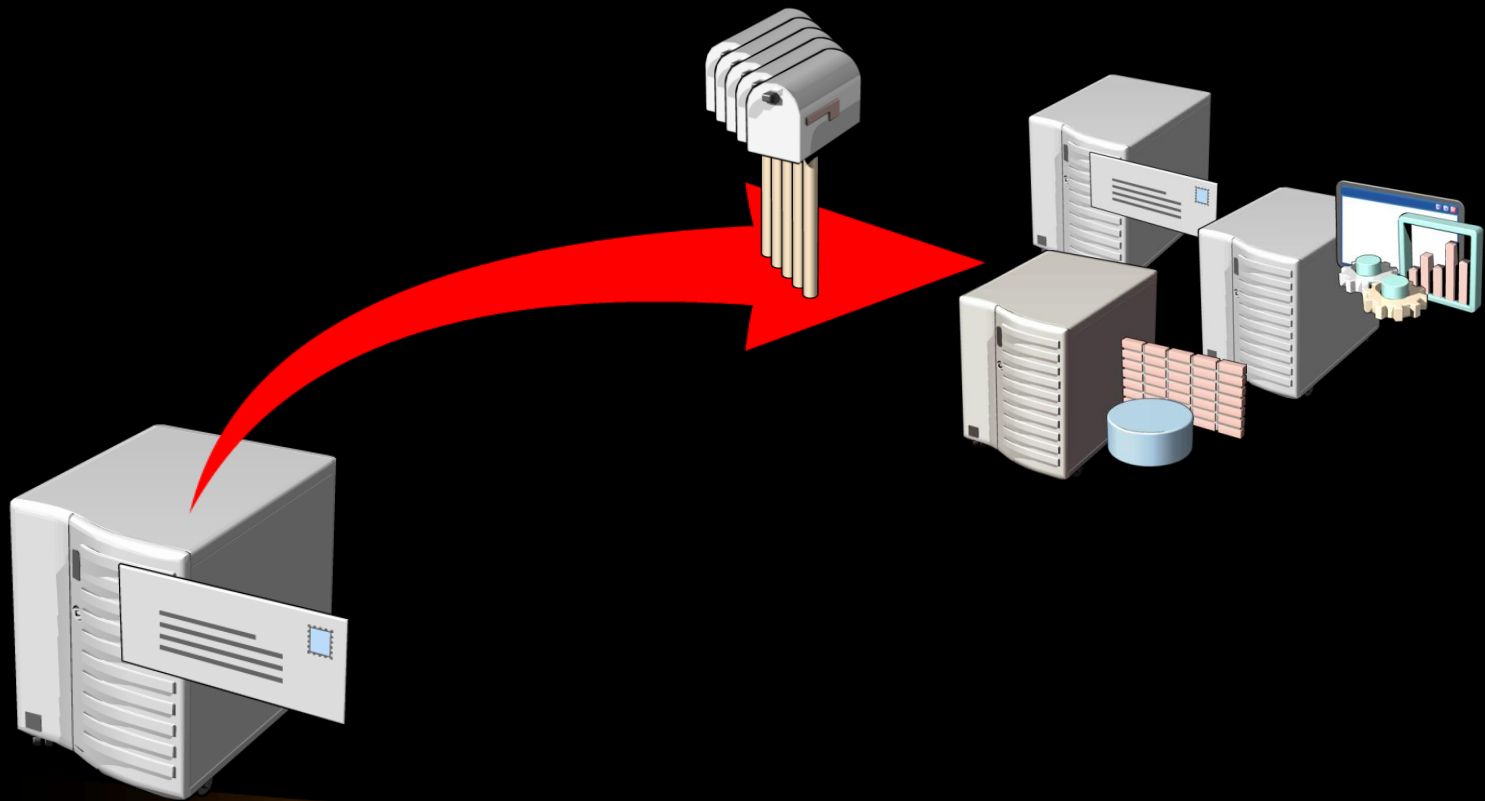
# DNS Server Migration To Essential Business Server

## Migrate DNS

- Prepare old DNS Server
  - Install DNS Server on Management Server
  - Install DNS on Messaging Server
- Modify DNS settings for EBS Servers
  - Remove old DNS Server when you are ready
  - Verify the migration

# Migrating Microsoft Exchange Server

- ▶ Migrating Exchange Server to Essential Business Server gives access to Exchange Server 2007 enhanced features.



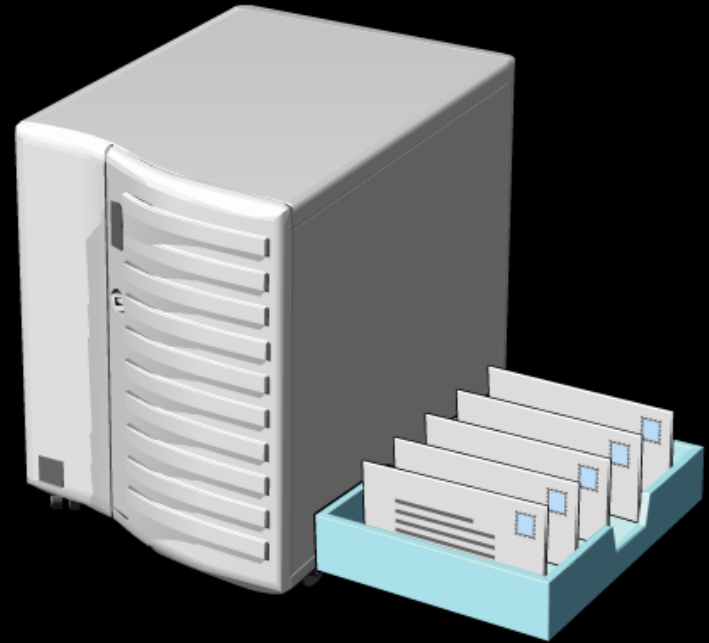
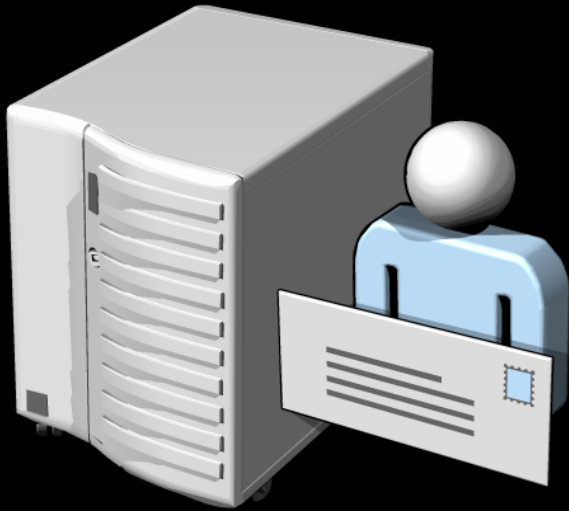
# Migrate Exchange Server to Essential Business Server

Move  
mailboxes

Move offline  
address book  
generation

Replicate  
public folders

Verify The  
migration\*



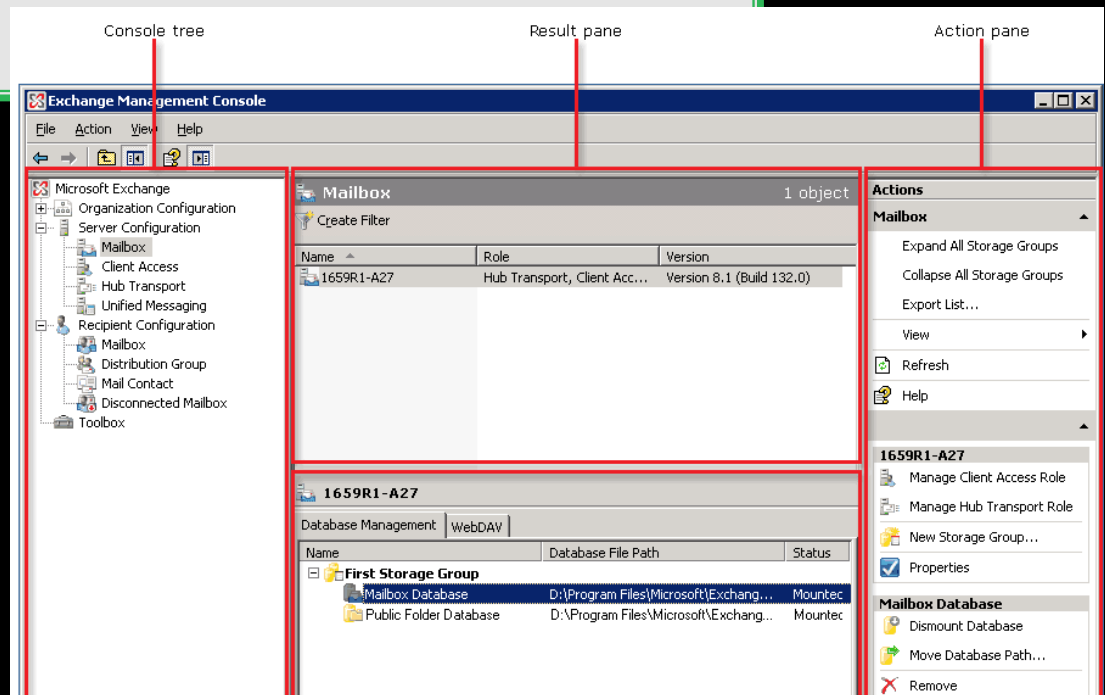
\*Wait several weeks to decommission old Exchange Servers



# Move Mailboxes and Public Folders to EBS Messaging Server

## Exchange Management Console

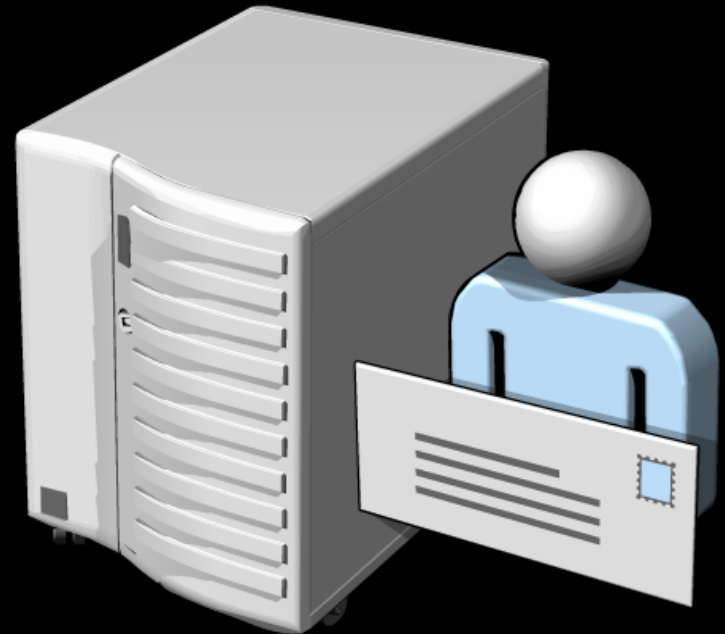
- Can move mailboxes
- Set quarantined mail and skipped mail options
- No interruption of service



# Decommission Existing Exchange Servers

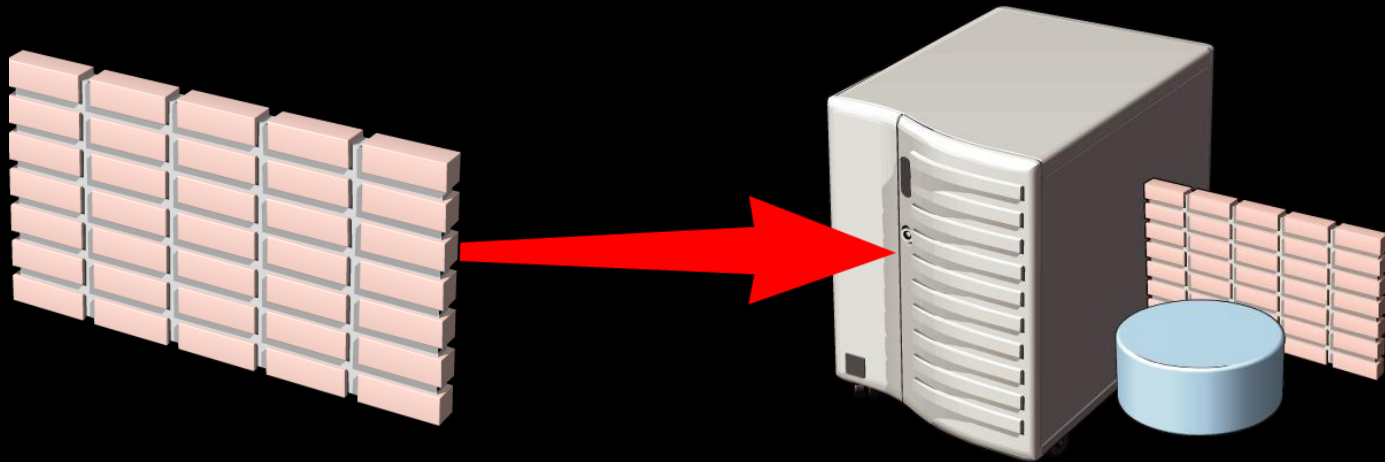
## Don't Hurry

- Wait several weeks
- All clients running Microsoft® Office Outlook® need to contact the new server before the old one is removed
- DISABLE Exchange Services on old server and check for user issues
- Leave Exchange Services down on old server for a couple of days
- Unplug old server from network, but leave intact
- After a week unplugged, can reformat/repurpose old server



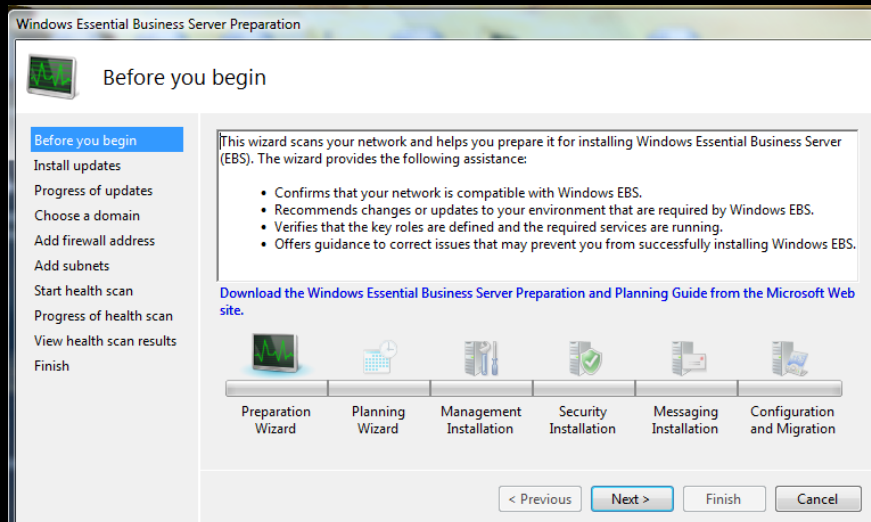
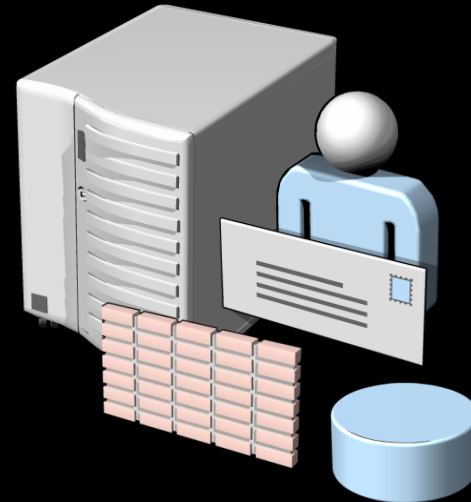
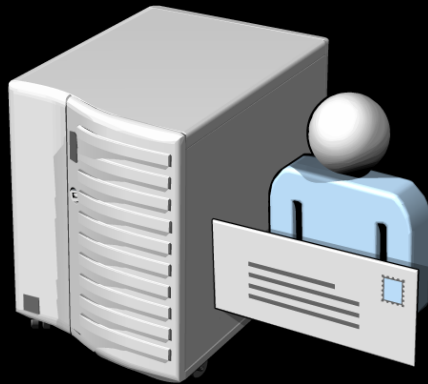
# Migrating Firewall

Thorough planning will minimize downtime and reduce risk of exposure or mis-configuration



# Migrating from ISA Server 2004

When migrating from Windows SBS 2003 R2 Premium Edition, updates are required for ISA Server 2004



Running ISA 2004  
*requires ISA 2004 SP3*

# Document and Review Existing Firewall Rules

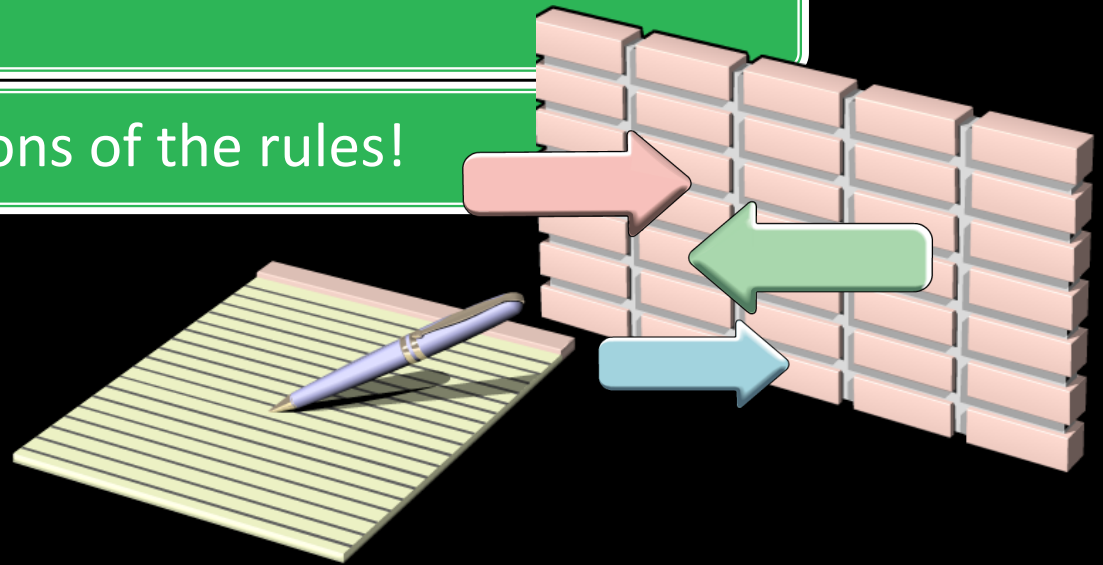
Export options typically aren't very useful

Print

Screenshot

Handwritten

Be sure to include directions of the rules!



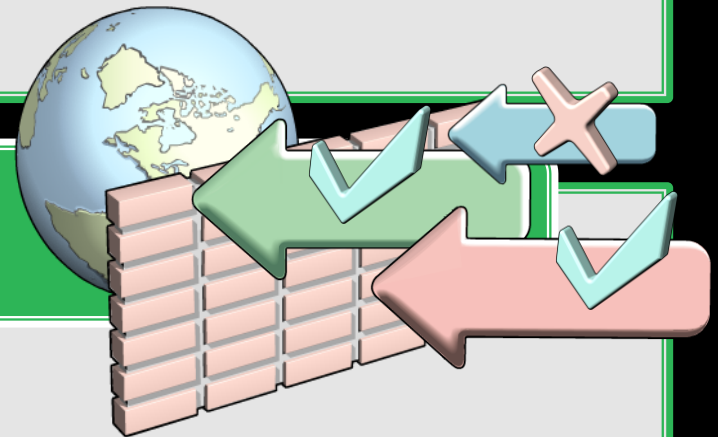
# Configuring Firewall Rules Using Forefront Threat Management Gateway

Essential Business Server Installation Wizard publishes certain default rules

- Allow Remote Web Workplace
- Allow Office Outlook Web Access

Configure additional rules

- Publishing Rule Wizard
- New server Publishing Wizard
- Forefront Threat Management Gateway Console



# Migrating Windows Server Update Services (WSUS)

Should Windows Software Update Services be migrated?

It's optional, so decide if the time and cost are worth it.

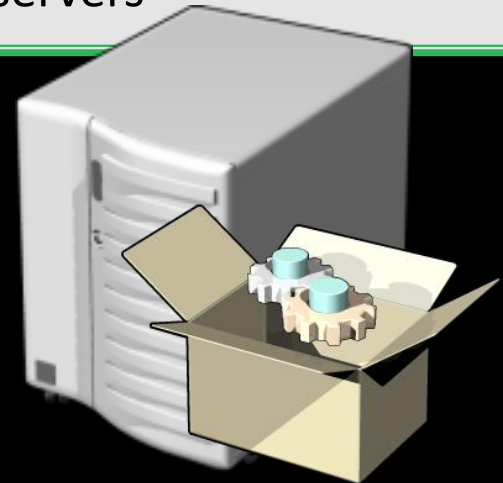
Migrate to preserve WSUS configuration



# Migrating Application Servers

## Considerations for running line-of-business (LOB) applications

- No changes are required to existing LOB servers
- Premium edition includes an additional copy of Windows Server 2008 Standard and SQL Server 2008 Standard that can be used to run LOBs
- LOBs cannot run on any of the three core EBS servers





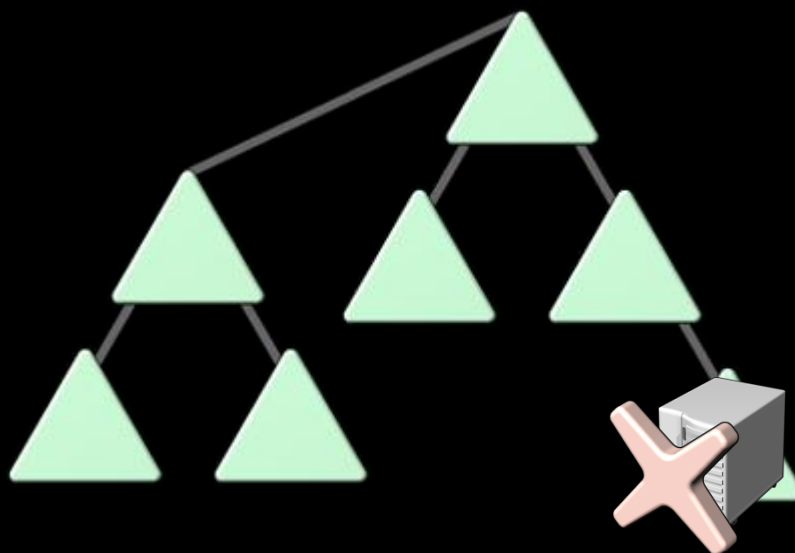
# Removing Unnecessary Servers

Be sure to remove servers completely from the EBS Network Infrastructure Services

This includes DNS, Active Directory and DHCP

- Look for address reservations

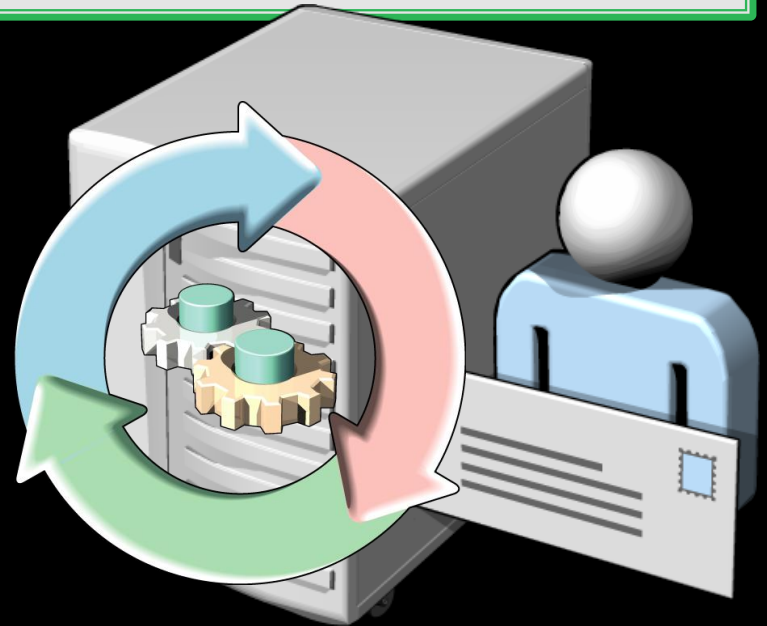
DCPROMO down DCs that are no longer required/desired




# Demote Unnecessary Domain Controllers

Use DCPROMO to demote extra domain controllers

- Small Business Server must be removed within 7 days or it endlessly reboots
- Option to extend time to 21 days



# Migration Tasks




## Guided Configuration and Migration Tasks

The configuration and migration checklist guides you through the final configuration steps of the Windows Essential Business Server servers and the migration of your existing data. Completing these tasks is highly recommended to enable all of your product features.

[Windows Essential Business Server Web Site](#)  
[Add-in Catalog Web site](#)

#	Task	Status
1	Install the Management Server	Finished
2	Install the Security Server	Finished
3	Install the Messaging Server	Finished
4	Configure subnets	Finished
5	Configure site-to-site VPN	Finished
6	Configure firewall rules	Finished
7	Migrate DNS	Finished
8	Migrate DHCP	Finished
9	Configure management tools	Finished
10	Activate the servers	Finished
11	Configure DNS Sender ID	Finished
12	Configure DNS for RWW	Finished
13	Migrate the Exchange Server mailboxes	Finished
14	Move the user scripts and profiles	Finished
15	Discover computers and devices	Finished
16	Configure software update rules	Finished
17	Move Active Directory roles	Finished
18	Configure SharePoint Services	Finished
19	Install client access licenses	Finished
20	Assign client access licenses	Finished
21	Finish configuration	Finished



### Configure the rules that are used to download, approve, and install software updates


Less than 30 minutes to complete

Windows Essential Business Server manages Microsoft software updates for the managed computers in your network. You must configure the download, approval, and installation settings for these software updates.

1. Click Start the Update Management Settings Wizard, and then follow the instructions in the wizard.

Start the Update Management Settings Wizard

2. After you finish this task, mark it as complete.

 Mark task as finished  
move to next task

# Summary

- ▶ Planning and Preparation Wizards
- ▶ Installing Windows EBS 2008
  - ▶ See hidden slides
- ▶ Migration

## Digitalen

- ▶ 27. feb: Del 2 - Daglig Drift
- ▶ 17. apr: Del 3 - Integration af drifts- og forretningsapplikationer
- ▶ Kalenderdatoer og tilmelding [her](#)

# Resources (Partner)

- ▶ **MSPP Windows Essential Server Solutions**  
<https://partner.microsoft.com/multiplyyourpower>
- ▶ **Windows Essential Server Solutions webcasts**  
[https://training.partner.microsoft.com/plc/search\\_adv.aspx?ssid=2ff59e1b-42b9-4802-afc1-a02fb3d5eca3](https://training.partner.microsoft.com/plc/search_adv.aspx?ssid=2ff59e1b-42b9-4802-afc1-a02fb3d5eca3)

# Resources

- ▶ [Preparation and Planning](#)
- ▶ [Windows Essential Business Server Installation](#)
- ▶ [Guided Configuration and Migration Tasks](#)
- ▶ [Migrating Active Directory Domain Services Scripts, Roaming Profiles, Redirected Folders, and Home Directories to Windows Essential Business Server](#)
- ▶ [Migrating DHCP Server Service to Windows Essential Business Server](#)
- ▶ [Migrating the DNS Role to Windows Essential Business Server](#)
- ▶ [Migrating Microsoft Exchange Server to Windows Essential Business Server](#)
- ▶ [Migrating from Windows Small Business Server 2003 to Windows Essential Business Server](#)
- ▶ [Migrating Windows Server Update Services to Windows Essential Business Server](#)
- ▶ [Configuring Hyper-V for Windows Essential Business Server](#)
- ▶ Kilde: <http://technet.microsoft.com/en-us/library/cc463409.aspx>

# Resources

- ▶ Windows EBS TechNet Library  
<http://technet.microsoft.com/en-us/library/cc514031.aspx>
- ▶ Windows SBS TechNet Library  
<http://technet.microsoft.com/en-us/library/cc527559.aspx>
- ▶ The Windows SBS Official Blog  
<http://blogs.technet.com/sbs/default.aspx>
- ▶ The Windows EBS Official Blog  
<http://blogs.technet.com/essentialbusinessserver/default.aspx>
- ▶ Nick King's Blog  
<http://blogs.technet.com/nking/default.aspx>
- ▶ Sean Daniel's Blog  
<http://sbs.seandaniel.com/>

Q & A





© 2008 Microsoft Corporation. All rights reserved. Microsoft, Windows, Windows Vista and other product names are or may be registered trademarks and/or trademarks in the U.S. and/or other countries. The information herein is for informational purposes only and represents the current view of Microsoft Corporation as of the date of this presentation. Because Microsoft must respond to changing market conditions, it should not be interpreted to be a commitment on the part of Microsoft, and Microsoft cannot guarantee the accuracy of any information provided after the date of this presentation. MICROSOFT MAKES NO WARRANTIES, EXPRESS, IMPLIED OR STATUTORY, AS TO THE INFORMATION IN THIS PRESENTATION.