



# How To Migrate from Virtual Server to Hyper-V

***Brian Lauge Pedersen***

***Virtualization Technical Solutions Professional***

***Microsoft Danmark***

# Migrating your virtual machines that are running on Virtual Server 2005 R2 SP1 or Virtual PC to Hyper-V

1. Prepare the virtual hard disk in Virtual Server
2. Move the .vhd file
3. Create a new virtual machine in Hyper-V using the .vhd file

There is no import function in Hyper-V for virtual machines running on Virtual Server and Virtual PC

# Follow these steps to migrate your virtual machines #1

## 1. In Virtual Server check

- Virtual machine settings

- Virtual network settings

- Network adapter settings

## 2. Ensure that the operating system is up to date with all required software updates and hotfixes

## 3. Uninstall Virtual Machine Additions

## 4. Shut down the virtual machine to prepare the virtual hard disk

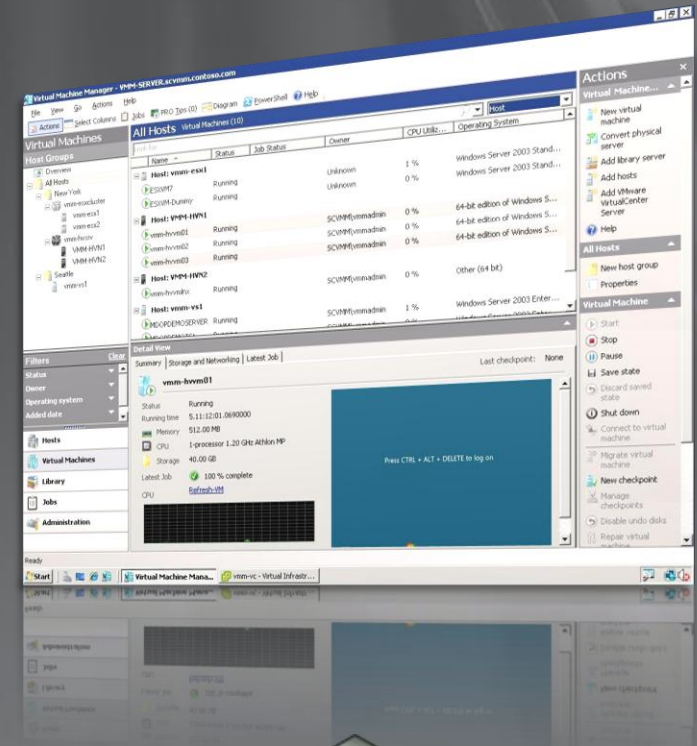
# Follow these steps to migrate your virtual machines #2

1. Check hardware abstraction layer (HAL) compatibility
2. Shut down the virtual machine, and then move the .vhd file
3. Create a new virtual machine on Hyper-V
4. Start your virtual machine in Hyper-V

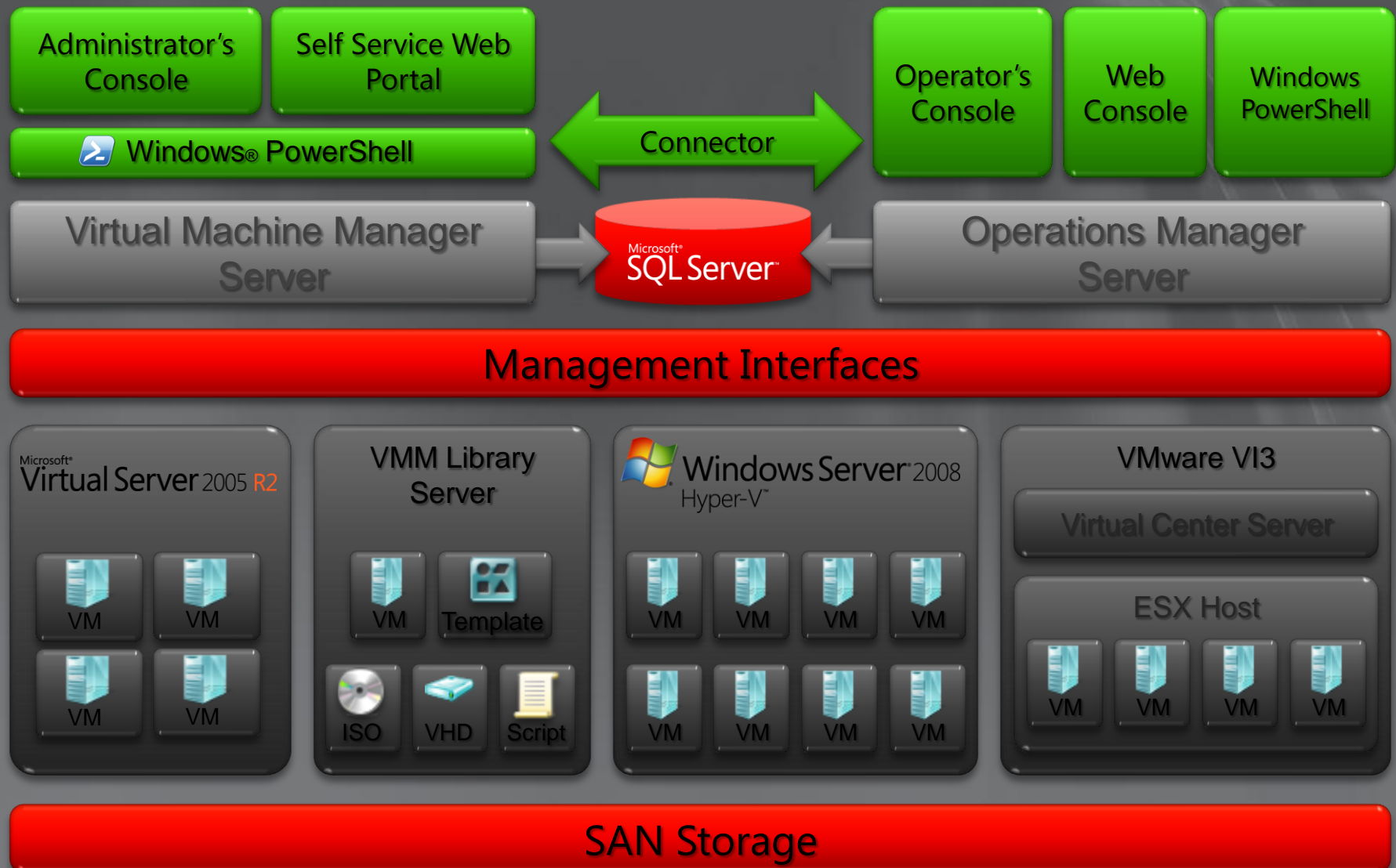
# Microsoft® System Center Virtual Machine Manager 2008

A centralized, heterogeneous management solution for the virtual datacenter

- Maximize Resources
  - Centralized virtual machine deployment and management for Hyper-V, Virtual Server, and VMware ESX servers
  - Intelligent placement of Virtual Machines
  - Fast and reliable P2V and V2V conversion
  - Comprehensive application and service-level monitoring with Operations Manager
  - Integrated Performance and Resource Optimization (PRO) of VMs
- Increase Agility
  - Rapid provisioning of new and virtual machines with templates
  - Centralized library of infrastructure components
  - Leverage and extend existing storage infrastructure and clusters
  - Allow for delegated management and access of VMs
- Leverage Skills
  - Familiar interface, common foundation
  - Monitor physical and virtual machines from one console
  - Fully scriptable using PowerShell



# VMM 2008 Architecture



# Machine conversion

Microsoft® System Center Virtual Machine Manager 2008

- Conversion types
  - Migration
  - Physical to Virtual conversion (P2V)
  - Virtual to Virtual conversion (V2V)
- Supported Operating systems
  - Microsoft Windows® 2000 Server SP4 or later (32-bit)
  - Microsoft Windows Server® 2003 SP1 or later (32-bit and 64-bit)
  - Microsoft Windows Server 2008 or later (32-bit and 64-bit)
  - Windows Vista Service Pack 1 or later (32-bit and 64-bit)
  - Windows XP Service Pack 3 or later (32-bit and 64-bit)

