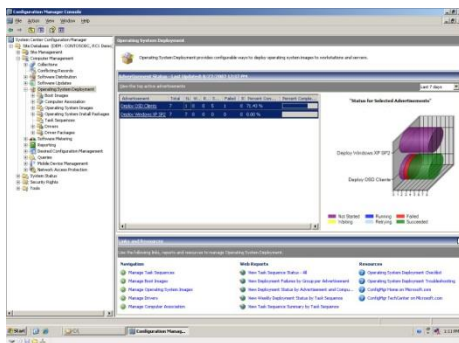




System Center Configuration Manager

Operating System Deployment

Built on Windows® platform technologies to reduce the costs of your Windows Vista® and Windows Server deployments through automated zero or near zero touch deployments



Dynamic IT infrastructure is a fact of life. IT departments face the continual need to deploy operating systems and applications across their organizations. However, managing and supporting operating system distributions is a complex and often manual task that burdens already limited IT management resources.

System Center Configuration Manager 2007 offers integrated operating system deployment tools that provide a centralized, scalable and customizable way for IT administrators to deploy Client and Server operating systems across their organization quickly and cost-effectively. By reducing the complexity of managing and tracking operating system deployments, Configuration Manager 2007 helps reduce administrative overhead and lower the total cost of ownership.

Flexible OS deployment

Configuration Manager 2007 is a fully automated solution that allows IT administrators to deploy and configure servers and clients from a central location. Administrators can deploy computers from any previous state, including bare-metal deployments of new computers and upgrades

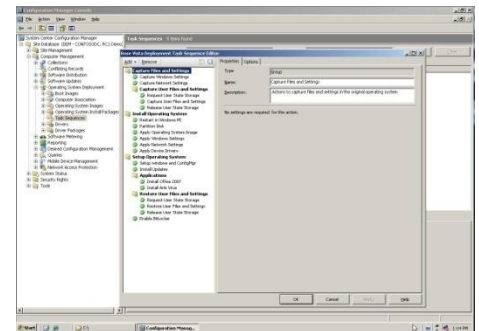
of existing computers. In addition to the desired version of Windows, IT administrators can deliver the applications, updates, patches and security fixes that the target computer requires. For migrations, Configuration Manager 2007 provides tools for administrators to collect a user's documents and settings, which Configuration Manager will automatically restore to the computer after the installation.

Configuration Manager 2007 increases support for multiple deployment scenarios, such as standalone deployments, Preboot Execution Environment (PXE)-based deployments, bare-metal deployments and in-place and computer-to-computer migrations. Configuration Manager 2007 highly automates all of these deployment scenarios for use in both connected and disconnected environments. For computers not managed by Configuration Manager 2007, administrators can distribute the images on standalone media such as CD/DVD and USB flash drives.

Built on Windows tools

Configuration Manager 2007 builds on Windows platform deployment technologies, making it the best choice for centralized deployment of Windows operating systems. By leveraging standard Windows tools from the Windows Automated Installation Kit (WAIK) such as the Windows Image Format (WIM), ImageX, Windows Preinstallation Environment (WinPE) and Windows Deployment Services, Configuration Manager 2007 gives IT administrators familiar tools and interfaces that are enhanced to provide a centralized, scalable and enterprise-wide deployment infrastructure. What's more, the tools are common between Windows Client and Server, so administrators have a common toolset and common process for the deployment of both operating systems.

For migrations, Configuration Manager 2007 has built on the Application Compatibility Toolkit (ACT) to provide an integrated,



enterprise-wide impact analysis for Vista migrations, including application and device driver compatibility.

The use of Windows tools gives IT administrators flexibility and interchangeability. For example, administrators can deploy images from Windows Deployment Services with Configuration Manager 2007 and vice versa. They can use ImageX to manipulate Configuration Manager 2007 images. This interchangeability makes operating system deployments easier and more efficient.

Reducing OS images

IT infrastructures are defined by complexity while retaining the need for flexibility. This complexity poses a challenge to administrators when it comes to creating and deploying operating systems since the computers that require operating system images can have vastly different hardware configurations. For example, an organization may have several hardware platforms, each platform having unique components and driver requirements. The result is a proliferation of operating system images that are difficult to track and manage.

To simplify operating system deployment in complex environments, Configuration Manager 2007 significantly reduces the number of operating system images an organization must create and manage by separating the management of the core image from the management of the device drivers. A customizable driver catalog lets administrators dynamically deploy the right drivers, from Microsoft and third parties, at runtime during an operating system deployment. As a result,

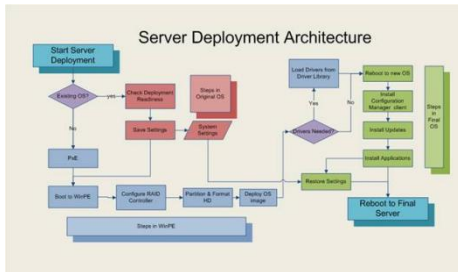


IT departments have fewer operating system images to manage and greater flexibility that enables them to deliver the required operating system, applications, updates, patches and security fixes to a device in a single distribution.

Automated task sequences

Configuration Manager 2007 includes an advanced Task Sequencer that fully automates the end-to-end deployment process enabling zero- or near zero-touch deployments. The Task Sequencer includes 28 built-in actions and is flexible to allow administrators to add steps or customize the actions as necessary.

IT administrators can create task sequences



that build source computers, capture operating system images, migrate user and computer settings, and deploy software applications and software updates. The Task Sequencer is particularly valuable when multiple steps are required at various stages in the deployment process such as when installing firmware, BIOS, drivers and management technologies to client or server targets.

By fully automating the end-to-end deployment process, Configuration Manager 2007 lets IT administrators deploy not only operating systems, but also everything necessary to help ensure that the computer is fully up-to-date and ready for use with minimal disruption to the user.

Supporting server deployments

Configuration Manager 2007 includes functionality to support the unique needs of Windows Server operating system deployments. Administrators can roll out new servers rapidly and consistently with predictable configurations that are up-to-date with the desired features and roles installed. An option to deploy servers during pre-defined time slots (maintenance windows) provides administrator flexibility for server deployments while maintaining high uptime reliability.

IT administrators can fully deploy and configure servers from any previous state, either updating or replacing OEM builds, or installing the operating system and applications on new computers. Pre-Boot eXecution Environment (PXE) boot support and Windows Deployments Services integration make full deployment of servers that have no operating system installed simply a matter of plugging in the server and turning it on.

The Task Sequencer, driver packages and dynamic driver catalog included with Configuration Manager 2007 significantly reduce the number of server images IT organizations must create. This is particularly useful for servers with redundant array of independent disks (RAID) requirements and servers that use a storage area network (SAN). With Configuration Manager 2007, IT administrators can build a simple generic image and dynamically add the necessary drivers during the build. In addition, by integrating vendor provided tools, Configuration Manager 2007 can automate the setup of RAID/SAN/iSCSI as part of a task sequence.

Centralized monitoring

Automation is key to driving IT as a strategic business asset. The fewer physical visits required and hands-on work performed the more cost-effective the IT assets become. With Configuration Manager 2007, visibility and reporting as to the state of client and server deployments is detailed and complete giving administrators centralized monitoring of operating system deployments. An administrator can get enterprise- to computer-level details on the state of deployment and any information regarding failed deployments. This facilitates problem resolution proactively, quickly and easily.

Centralized monitoring

In the era of compliance and auditing, it becomes mandatory to ensure data is safe, secure and available to only those who need to see it. Configuration Manager 2007 helps secure the operating system deployment process through security features such as password protection of deployment media, encryption on the network and target machine, strong authorization of the target computer and encryption of images on the network. To help ensure that the migration to a new operating system is security enhanced throughout the transition, Configuration Manager 2007 also encrypts the user state during migration.

Configuration Manager 2007 provides seamless, comprehensive integration of enterprise tools that IT organizations can rely on to help reduce cost of ownership and improve operational efficiency. Through automated operating system deployment and task sequences, Configuration Manager 2007 helps IT departments reduce the costs of their Vista and Windows Server deployments and upgrades.

To learn more about System Center Configuration Manager visit <http://www.microsoft.com/systemcenter/configmgr/default.aspx>

© 2006 Microsoft Corporation. All rights reserved. The information contained in this document represents the current view of Microsoft Corporation on the issues discussed as of the date of publication. Because Microsoft must respond to changing market conditions, it should not be interpreted to be a commitment on the part of Microsoft, and Microsoft cannot guarantee the accuracy of any information presented after the date of publication. The information represents the product at the time this document was printed and should be used for planning purposes only. Information subject to change at any time without prior notice. This data sheet is for informational purposes only. MICROSOFT MAKES NO WARRANTIES, EXPRESS OR IMPLIED, IN THIS SUMMARY.

Microsoft, Active Directory, Windows, the Windows logo, and Windows Server System are either registered trademarks or trademarks of Microsoft Corporation in the United States and/or other countries.

All other trademarks are property of their respective owners.