


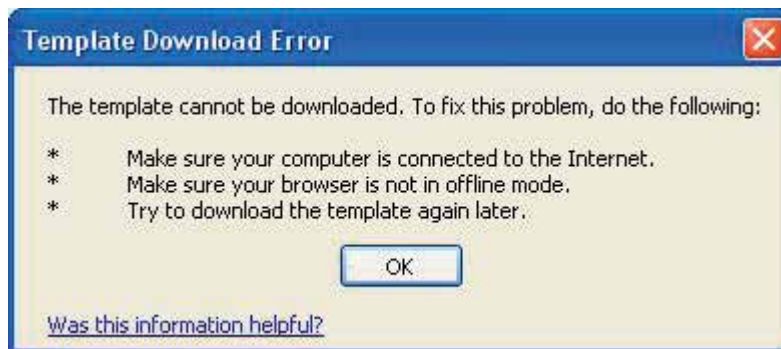
Do Business with Style.

Using This Template:

You have just downloaded a new Office document theme to use in Microsoft Office PowerPoint 2007, Microsoft Office Word 2007, Microsoft Office Excel 2007, Microsoft Accounting Express or Microsoft Publisher.

To use your new theme:

- If you haven't already opened Microsoft Office PowerPoint 2007, Microsoft Office Word 2007, Microsoft Office Excel 2007, Microsoft Accounting Express or Microsoft Publisher, do so now.
- In PowerPoint 2007, on the Design tab, in the Themes group, click the More  button. Look in the Custom section to see the new theme you just downloaded. In Word 2007 or Excel 2007, on the Page Layout tab, in the Themes group, click Themes and look in the Custom section to see the new theme you just downloaded.
- Although the theme has successfully downloaded, you may see the following template download error:



This is a false error. Be assured the theme has successfully downloaded. We are working to resolve this problem as quickly as possible and apologize for the inconvenience.

- Click OK.
- Apply the new theme to your document or select one that is already Built-In.

Do Business with Style.

See Also:

- [Apply, customize, and save a document theme in Word or Excel](#)
(<http://office.microsoft.com/client/helppreview.aspx?AssetID=HA012299241033&ns=WINWORD&lcid=1033&CTT=3&Origin=TC102056001033>)
- [Use themes to customize the look and feel of your documents](#)
(<http://office.microsoft.com/client/helppreview.aspx?AssetID=HA100948921033&ns=WINWORD&lcid=1033&CTT=3&Origin=TC102056001033>)
- [Delete a custom theme](#)
(<http://office.microsoft.com/client/helppreview.aspx?AssetID=HA101172961033&ns=WINWORD&lcid=1033&CTT=3&Origin=TC102056001033>)
- [Demo: Apply your brand to Office documents with themes](#)
(<http://office.microsoft.com/client/helppreview.aspx?AssetID=HA101644061033&ns=WINWORD&lcid=1033&CTT=3&Origin=TC102056001033>)
- [All about themes, Quick Styles, cell styles, and background styles](#)
(<http://office.microsoft.com/client/helppreview.aspx?AssetID=HA101786241033&ns=WINWORD&lcid=1033&CTT=3&Origin=TC102056001033>)
- [Use a theme from another document](#)
(<http://office.microsoft.com/client/helppreview.aspx?AssetID=HA101991491033&ns=WINWORD&lcid=1033&CTT=3&Origin=TC102056001033>)
- [Change the default theme](#)
(<http://office.microsoft.com/client/helppreview.aspx?AssetID=HA102045501033&ns=WINWORD&lcid=1033&CTT=3&Origin=TC102056001033>)
- [Templates Discussion Group](#)
(<http://office.microsoft.com/search/redirect.aspx?assetid=XT100597801033&url=rIdTemplateDiscussion&hurl=03C0C561AEB96D330815074EF471C05F&ns=WINWORD&lcid=1033&CTT=3&Origin=TC102056001033>)