



# Microsoft® System Center Capacity Planner 2007

Microsoft®  
System Center

*Simplify Deployment Planning and Predict the Impact of Change*

Developing a reliable, scalable architecture for enterprise applications like Microsoft Exchange Server 2007 is critical for the success of the implementation, the productivity of the end user, and the overall cost of the solution itself. Over-utilized servers result in performance degradation and loss of end user productivity. Under-utilized servers can cause higher capital and operations expenses.

Microsoft System Center Capacity Planner 2007 provides the IT professional with the guidance required to plan a new deployment in the most efficient manner, while also delivering “what-if” analysis to optimize existing implementations and plan for change.

## Key Features

- Simple installation and setup
- Built-in knowledge of Exchange Server 2007
- Add-in knowledge for Microsoft System Center Operations Manager 2007, Microsoft Windows® SharePoint Services 3.0, and Microsoft Office SharePoint® Server 2007
- Recommended topology in a Graphical User Interface
- Export topology to Visio and server configuration to Excel
- Model server performance and end-user response time
- Hardware library includes popular configurations
- Create custom hardware

## Key Benefits

### Plan More Efficient Deployments, Reduce Costs

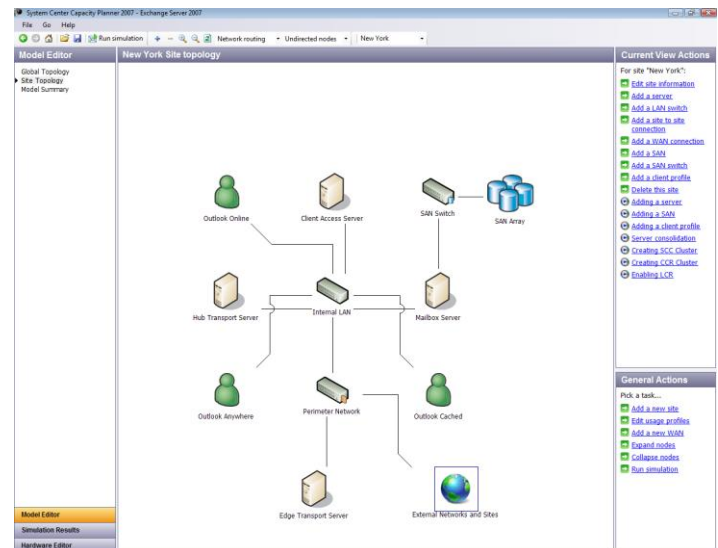
In planning for a new or upgraded deployment, determining the number and sizing of servers, as well as the recommended placement of those servers within the enterprise, is critical. The IT professional must design an architecture that puts the application servers where they will be used most efficiently, in order to minimize hardware and software costs.

System Center Capacity Planner 2007 helps the IT professional to effectively size a Microsoft Exchange Server 2007 implementation by:

### Providing infrastructure sizing for distributed server deployments

Capacity Planner provides an easy way to identify the hardware, software and architecture required for an organization to deploy Microsoft Exchange Server 2007. It also provides architectural recommendations tailored to the requirements of the enterprise, such as the need for configurations to support high availability or disaster recovery.

This information is presented in an easy-to-understand topology view that can be directly used in the deployment process.



### Delivering hardware utilization analysis

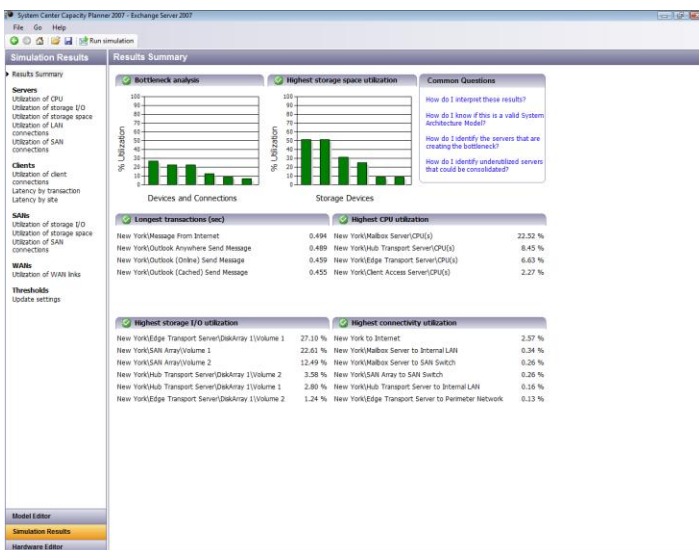
Capacity Planner can simulate the user workload on a model of the proposed IT infrastructure. It will calculate the utilization of each device in the infrastructure including servers, disk subsystems, LANs, and WANs. Based on this information, the IT professional can determine if the proposed deployment will meet current and future performance and capacity requirements.



## Plan for Change

### Hardware and architecture “what-if” analysis

The IT professional can propose changes to a modeled IT infrastructure to determine the most desirable hardware configuration and architecture. This might be used to understand the effects of using higher-performance disks. Once the model is changed to reflect the new disks, a user workload simulation can be run to predict, for example, whether the change would result in additional load on the servers. This helps the IT professional better understand how to design for future capacity needs.



### Software “what-if” analysis

Similar to the hardware “what-if” analysis, IT professionals can experiment with various software options. For example, for Exchange Server 2007, the IT professional can analyze the performance implications of deploying the Outlook® Web Access (OWA) service in their infrastructure or using a different clustering mechanism.

### Identify impacts of changes to the organization

Capacity Planner provides the ability to determine the impact of adding new users or sites to the application. The IT professional could modify the usage scenario to reflect the additional sites and users and identify the impact these changes would have on existing servers and performance delivered to the end user.

### Stay a Step Ahead of Performance Issues

The use of System Center Capacity Planner throughout the lifecycle of an application will help the IT professional continuously ensure that the Microsoft Exchange Server 2007 application servers are running at efficient levels and avoid future bottlenecks. Capacity Planner can help answer questions, such as:

- What would be the impact of consolidating the Exchange servers onto new, larger hardware?
- What would be the impact to end-users and network utilization of consolidating servers to a central datacenter?
- What would be the impact of implementing an Exchange clustering or replication technique such as Cluster Continuous Replication (CCR)?
- What would be the impact of using Outlook cached Exchange mode versus Outlook online mode in an Exchange deployment?

This provides the IT professional the ability to proactively plan and change the infrastructure as needed to continuously meet desired service levels throughout the application lifecycle.

### What's New in System Center Capacity Planner 2007

- Capacity model for Exchange Server 2007
- System Center Capacity Planner can be extended with new models from Microsoft, including System Center Operations Manager 2007, Windows SharePoint Services 3.0, and Office SharePoint Server 2007
- Support for 64-bit processor architectures
- Comprehensive reporting of disk IO and storage details
- Increased flexibility in customizing server usage profiles

© 2006 Microsoft Corporation. All rights reserved. The information contained in this document represents the current view of Microsoft Corporation on the issues discussed as of the date of publication. Because Microsoft must respond to changing market conditions, it should not be interpreted to be a commitment on the part of Microsoft, and Microsoft cannot guarantee the accuracy of any information presented after the date of publication. The information represents the product at the time this document was printed and should be used for planning purposes only. Information subject to change at any time without prior notice. This data sheet is for informational purposes only. MICROSOFT MAKES NO WARRANTIES, EXPRESS OR IMPLIED, IN THIS SUMMARY.

Microsoft, Active Directory, Windows, the Windows logo, and Windows Server System are either registered trademarks or trademarks of Microsoft Corporation in the United States and/or other countries.

All other trademarks are property of their respective owners.

Place Part Number here.

Microsoft®  
**System Center**  
Knowledge-Driven IT Management



## How to Get System Center Capacity Planner 2007

Find out more at <http://www.microsoft.com/sccp>. System Center Capacity Planner 2007 is available for anyone to download from the Capacity Planner Download Catalog at <http://technet.microsoft.com/en-us/sccp/bb969059.aspx>.

## More Capacity Planning Models Are Available

Capacity Planning models for the following products are available now as separate downloads from the Capacity Planner Download Catalog at

<http://technet.microsoft.com/en-us/sccp/bb969059.aspx>:

- Microsoft System Center Operations Manager 2007
- Microsoft Windows SharePoint Services 3.0
- Microsoft Office SharePoint Server 2007

© 2006 Microsoft Corporation. All rights reserved. The information contained in this document represents the current view of Microsoft Corporation on the issues discussed as of the date of publication. Because Microsoft must respond to changing market conditions, it should not be interpreted to be a commitment on the part of Microsoft, and Microsoft cannot guarantee the accuracy of any information presented after the date of publication. The information represents the product at the time this document was printed and should be used for planning purposes only. Information subject to change at any time without prior notice. This data sheet is for informational purposes only. MICROSOFT MAKES NO WARRANTIES, EXPRESS OR IMPLIED, IN THIS SUMMARY.

Microsoft, Active Directory, Windows, the Windows logo, and Windows Server System are either registered trademarks or trademarks of Microsoft Corporation in the United States and/or other countries.

All other trademarks are property of their respective owners.

Place Part Number here.

Microsoft®  
**System Center**  
Knowledge-Driven IT Management