



Sunshine Connections

Active Directory Internet Admin Tool

Use Cases

Author Vanessa Toves
Author Position
Date 1/22/2008

Version: 1.0

© 2007 Microsoft Corporation. All rights reserved.

The information contained in this document represents the current view of Microsoft Corporation on the issues discussed as of the date of publication. Because Microsoft must respond to changing market conditions, it should not be interpreted to be a commitment on the part of Microsoft, and Microsoft cannot guarantee the accuracy of any information presented after the date of publication.

This document is for informational purposes only. **MICROSOFT MAKES NO WARRANTIES, EXPRESS OR IMPLIED, IN THIS DOCUMENT.**

Microsoft and Visual Basic are either registered trademarks or trademarks of Microsoft in the United States and/or other countries.



Table of Contents: District Administrator

Create New User.....	3
Edit General Information for Existing User	8
Delete Existing User	10
Add SC Role to Existing User.....	12
Create Organizational Unit in Active Directory.....	14
Delete Organizational Unit in Active Directory	15
Delete SC Role from Existing User	17
Filter Users.....	19
Reset Existing User Password	21
Download & Verify New SC Roles File.....	23
Update ADAT Roles configuration File.....	25

Table of Contents: DOE Administrator

Create New User.....	3
Edit General Information for Existing User	8
Delete Existing User	10
Add SC Role to Existing User.....	12
Create Organizational Unit in Active Directory.....	14
Delete Organizational Unit in Active Directory	15
Delete SC Role from Existing User	17
Filter Users.....	19
Reset Existing User Password	21
Download & Verify New SC Roles File.....	23
Update ADAT Roles configuration File.....	25



UC- Create New User P1
ADAT-1

Details	
Parent: District Administrator	
Primary Actors: District Administrator	Supporting Actors:
Preconditions:	Success Guarantee:
Level:	Complexity: Medium
Use Case Status: Initial	Implementation Status:
Assigned To:	Release:
Flow of Events	
Main Success Scenario:	
1. District Administrator launches the ADAT application.	
2. District Administrator binds to OU.	
3. District Administrator selects Bind from the AD drop down menu.	
4. District Administrator enters OU binding information.	
4.1. District Administrator enters a value in the Root OU input field.	
4.2. District Administrator enters a value in the Admin User Id input field.	
4.3. District Administrator enters a value in the Admin Password input field.	
5. District Administrator selects the Bind (button).	
6. District Administrator selects User from the system menu bar.	
7. District Administrator selects Add from the User drop down menu.	
8. District Administrator enters Account information for the new User record in ADAT	
8.1. District Administrator enters user logon value in User Logon Name input field.	
8.2. District Administrator indicates how the new user password will be generated.	
9. District Administrator assigns SC role	
10. District Administrator enters user General information:	
10.1. Staff Id	
10.2. First Name	
10.3. Initials	
10.4. Last Name	
10.5. Display Name	
10.6. Email	
11. District Administrator selects "Create"	
12. District Administrator closes ADAT	
Extensions:	
*a District Administrator closes ADAT	
2.a District Administrator Binds to OU	
1. Continue at Step 4.	
4.a District Administrator enters partial OU biding information.	
1. District Administrator doesn't enter a value in the Root OU input field.	
2. District Administrator enters a value in the Admin User Id input field.	



Active Directory Internet Admin Tool (ADAT) Use Cases

Flow of Events

3. District Administrator enters a value in the Admin Password input field.
4. District Administrator selects the Bind (button).
5. District Administrator selects the "+" (expand) indicator to the left of the top level "District" folder.
6. District Administrator selects an available OU
7. Continue at Step 6
- 5.a Admin User Id is not recognized
 1. Click OK
 2. Continue at Step 2
- 5.b Admin Password incorrect
 1. Click OK
 2. Continue at Step 2
- 8.a District Administrator closes ADAT
- 9.a No role selected and "Add >>" (Button)

Related Documents

A screenshot of a Windows-style dialog box titled "Bind to Active Directory". The dialog has a blue title bar with a close button (X) on the right. The main area is light gray and contains three input fields with labels to their left: "Root OU:" with the value "99", "Admin User ID:" with the value "sunshinedev\99Admin", and "Admin Password:" with the value "*****". Below the input fields are two buttons: "Bind" and "Cancel".



Active Directory Internet Admin Tool (ADAT) *Use Cases*

Related Documents

Active Directory Internet Admin Tool

AD	User	OU	User Logon Name	First Name	Initials	Last Name	Display Name	Email	Roles
		Districts							
		95							
		97							
		99							



Active Directory Internet Admin Tool (ADAT) Use Cases

Related Documents

Create New User in Active Directory [X]

Account

User Logon Name:

Password:

Confirm password:

System generated password

Roles | General

district level
school level
class level

Add >>

<< Remove

Create Cancel



Related Documents

update Existing User in Active Directory [X]

Account

User Logon Name:

Roles **General**

Staff ID:

First Name:

Initials:

Last Name:

Display Name:

Email:

Referenced Requirements	Type	ID
User must have a role assigned	Non-functional	REQ-ADAT-1



UC- Edit General Information for P1
ADAT-2 Existing User

Details

Parent: District Administrator

Primary Actors: District Administrator

Supporting Actors:

Preconditions:

Success Guarantee:

Level:

Complexity:

Use Case Status:

Implementation Status:

Assigned To:

Release:

Flow of Events

Main Success Scenario:

1. District Administrator launches the ADAT application.
2. District Administrator binds to OU.
3. District Administrator selects Bind from the AD drop down menu.
4. District Administrator enters OU binding information.
 - 4.1. District Administrator enters a value in the Root OU input field.
 - 4.2. District Administrator enters a value in the Admin User Id input field.
 - 4.3. District Administrator enters a value in the Admin Password input field.
5. District Administrator selects the Bind (button).
6. District Administrator selects User from the system menu bar.
7. District Administrator highlights a User from the Assigned Users window
8. District Administrator selects User from the system menu bar
9. District Administrator selects Edit from the User drop down menu.
10. District Administrator selects General Tab
11. District Administrator edits user information:
 - 11.1. Staff Id
 - 11.2. First Name
 - 11.3. Initials
 - 11.4. Last Name
 - 11.5. Display Name
 - 11.6. Email
12. District Administrator selects the Update (button)
13. District Administrator closes ADAT

Extensions:

- *.a District Administrator closes ADAT
- 2.a District Administrator Binds to OU
 1. Continue at Step 4.
- 4.a District Administrator enters partial OU bidding information.
 1. District Administrator doesn't enter a value in the Root OU input field.
 2. District Administrator enters a value in the Admin User Id input field.
 3. District Administrator enters a value in the Admin Password input field.
 4. District Administrator selects the Bind (button).



Flow of Events

5. District Administrator selects the "+" (expand) indicator to the left of the top level "District" folder.
6. District Administrator selects an available OU
7. Continue at Step 6
- 5.a Admin User Id is not recognized
 1. Click OK
 2. Continue at Step 2
- 5.b Admin Password incorrect
 1. Click OK
 2. Continue at Step 2
- 7.a District Administrator double clicks User in the Assigned Users window.
 1. Continue at Step 10
- 10.a District Administrator closes ADAT
- 11.a District Administrator closes ADAT



UC- Delete Existing User P1
ADAT-3

Details

Parent: District Administrator

Primary Actors: District Administrator

Supporting Actors:

Preconditions:

Success Guarantee:

Level:

Complexity:

Use Case Status:

Implementation Status:

Assigned To:

Release:

Flow of Events

Main Success Scenario:

1. District Administrator launches the ADAT application.
2. District Administrator binds to OU.
3. District Administrator selects Bind from the AD drop down menu.
4. District Administrator enters OU binding information.
 - 4.1. District Administrator enters a value in the Root OU input field.
 - 4.2. District Administrator enters a value in the Admin User Id input field.
 - 4.3. District Administrator enters a value in the Admin Password input field.
5. District Administrator selects the Bind (button).
6. District Administrator highlights a User from the Assigned Users window
7. District Administrator selects User from the system menu bar.
8. District Administrator selects Delete.
9. District Administrator selects Yes
10. District Administrator closes ADAT
- 11.

Extensions:

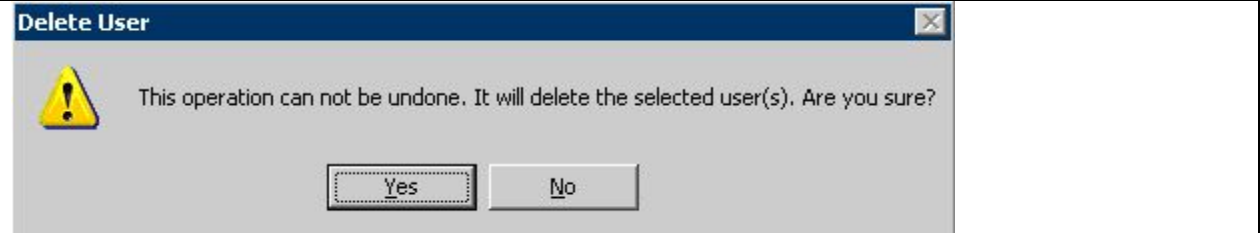
- 2.a District Administrator Binds to OU
 1. Continue at Step 4.
- 4.a District Administrator enters partial OU biding information.
 1. District Administrator doesn't enter a value in the Root OU input field.
 2. District Administrator enters a value in the Admin User Id input field.
 3. District Administrator enters a value in the Admin Password input field.
 4. District Administrator selects the Bind (button).
 5. District Administrator selects the "+" (expand) indicator to the left of the top level "District" folder.
 6. District Administrator selects an available OU
 7. Continue at Step 6
- 5.a Admin User Id is not recognized
 1. Click OK
 2. Continue at Step 2
- 5.b Admin Password incorrect
 1. Click OK



Flow of Events

- 2. Continue at Step 2
- 6.a District Administrator double clicks User
 - 1. Continue at Step 9
- 9.a District Administrator selects No
 - 1. Continue at Step 7

Related Documents





UC- Add SC Role to Existing User P1
ADAT-4

Details	
Parent: District Administrator	
Primary Actors: District Administrator	Supporting Actors:
Preconditions: SC role must exist in DOE AD.	Success Guarantee:
Level:	Complexity:
Use Case Status:	Implementation Status:
Assigned To:	Release:
Flow of Events	
Main Success Scenario:	
<ol style="list-style-type: none">1. District Administrator launches the ADAT application.2. District Administrator binds to OU.3. District Administrator selects Bind from the AD drop down menu.4. District Administrator enters OU binding information.<ol style="list-style-type: none">4.1. District Administrator enters a value in the Root OU input field.4.2. District Administrator enters a value in the Admin User Id input field.4.3. District Administrator enters a value in the Admin Password input field.5. District Administrator selects the Bind (button).6. District Administrator highlights a User from the Assigned Users window7. District Administrator selects User from the system menu bar8. District Administrator selects Edit form the User drop down menu.9. District Administrator selects General Tab10. District Administrator assigns SC role11. District Administrator selects the Update (button)12. District Administrator closes ADAT	
Extensions:	
*.a District Administrator closes ADAT	
2.a District Administrator Binds to OU <ol style="list-style-type: none">1. Continue at Step 4.	
4.a District Administrator enters partial OU biding information. <ol style="list-style-type: none">1. District Administrator doesn't enter a value in the Root OU input field.2. District Administrator enters a value in the Admin User Id input field.3. District Administrator enters a value in the Admin Password input field.4. District Administrator selects the Bind (button).5. District Administrator selects the "+" (expand) indicator to the left of the top level "District" folder.6. District Administrator selects an available OU7. Continue at Step 6	
5.a Admin User Id is not recognized <ol style="list-style-type: none">1. Click OK	



Flow of Events

- 2. Continue at Step 2
- 5.b Admin Password incorrect
 - 1. Click OK
 - 2. Continue at Step 2
- 6.a District Administrator double clicks User
 - 1. Continue at Step 0
- 8.a District Administrator closes ADAT
- 10.a No role selected and "Add >>" (Button)

Related Documents

A screenshot of a Windows-style dialog box titled "update Existing User in Active Directory". The dialog has a blue title bar with a close button (X) on the right. Inside, there is a section labeled "Account" with a text box for "User Logon Name" containing the value "99100010". Below this is a "Roles" section with a "General" tab selected. It features two list boxes: the left one contains "district level" and "school level", and the right one contains "class level". Between the list boxes are two buttons: "Add >>" and "<< Remove". At the bottom of the dialog are two buttons: "Update" and "Cancel".



UC- Create Organizational Unit in P1
ADAT-5 Active Directory

Details

Parent: District Administrator

Primary Actors: District Administrator

Supporting Actors:

Preconditions:

Success Guarantee:

Level: User

Complexity: Low

Use Case Status:

Implementation Status:

Assigned To:

Release:

Flow of Events

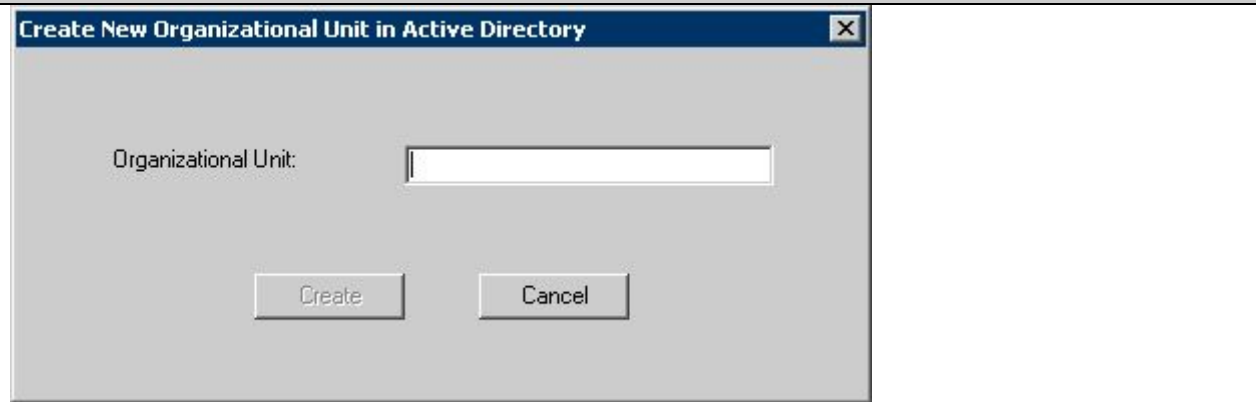
Main Success Scenario:

1. District Administrator launches the ADAT application.
2. District Administrator selects OU from the system menu bar.
3. District Administrator selects Add from the OU drop down menu.
4. District Administrator enters a value in the Organizational Unit input field.
5. District Administrator creates the new organizational unit
6. District Administrator closes ADAT

Extensions:

- *.a District Administrator closes ADAT
- 3.a District Administrator accesses Create New Organizational Unit in Active Directory.
- 4.a District Administrator closes Create New Organizational Unit in Active Directory screen.

Related Documents





UC- Delete Organizational Unit in P1
ADAT-6 Active Directory

Details

Parent: District Administrator

Primary Actors: District Administrator

Supporting Actors:

Preconditions:

Success Guarantee:

Level:

Complexity:

Use Case Status:

Implementation Status:

Assigned To:

Release:

Flow of Events

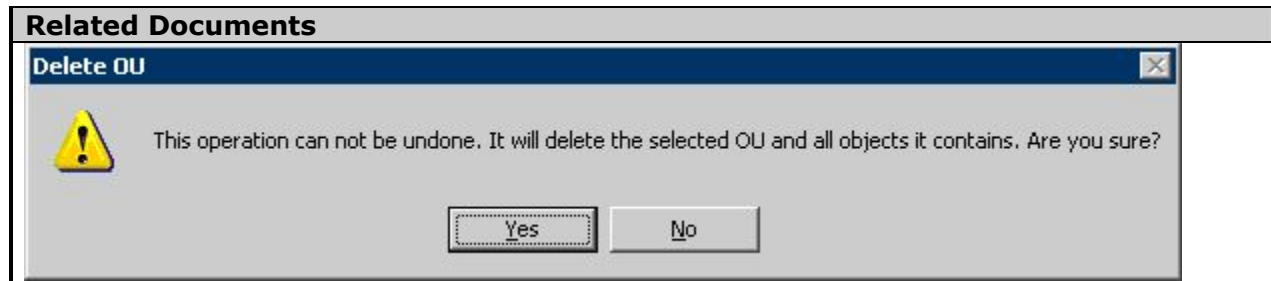
Main Success Scenario:

1. District Administrator launches the ADAT application.
2. District Administrator binds to OU.
3. District Administrator selects Bind from the AD drop down menu.
4. District Administrator enters OU binding information.
 - 4.1. District Administrator enters a value in the Root OU input field.
 - 4.2. District Administrator enters a value in the Admin User Id input field.
 - 4.3. District Administrator enters a value in the Admin Password input field.
5. District Administrator selects the Bind (button).
6. District Administrator selects Delete from the OU drop down menu.
7. District Administrator confirms OU deletion.

Extensions:

- 2.a District Administrator Binds to OU
 1. Continue at Step 4.
- 4.a District Administrator enters partial OU biding information.
 1. District Administrator doesn't enter a value in the Root OU input field.
 2. District Administrator enters a value in the Admin User Id input field.
 3. District Administrator enters a value in the Admin Password input field.
 4. District Administrator selects the Bind (button).
 5. District Administrator selects the "+" (expand) indicator to the left of the top level "District" folder.
 6. District Administrator selects an available OU
 7. Continue at Step 6
- 5.a Admin User Id is not recognized
 1. Click OK
 2. Continue at Step 2
- 5.b Admin Password incorrect
 1. Click OK
 2. Continue at Step 2
- 6.a District Administrator accesses Create New Organizational Unit in Active Directory.

Related Documents





UC- Delete SC Role from Existing P1
ADAT-7 User

Details

Parent: District Administrator

Primary Actors: District Administrator

Supporting Actors:

Preconditions:

Success Guarantee:

Level:

Complexity:

Use Case Status:

Implementation Status:

Assigned To:

Release:

Flow of Events

Main Success Scenario:

1. District Administrator launches the ADAT application.
2. District Administrator binds to OU.
3. District Administrator selects Bind from the AD drop down menu.
4. District Administrator enters OU binding information.
 - 4.1. District Administrator enters a value in the Root OU input field.
 - 4.2. District Administrator enters a value in the Admin User Id input field.
 - 4.3. District Administrator enters a value in the Admin Password input field.
5. District Administrator selects the Bind (button).
6. District Administrator highlights a User from the Assigned Users window
7. District Administrator selects User from the system menu bar
8. District Administrator selects Edit form the User drop down menu.
9. District Administrator removes SC role
10. District Administrator selects the Update (button)
11. District Administrator closes ADAT

Extensions:

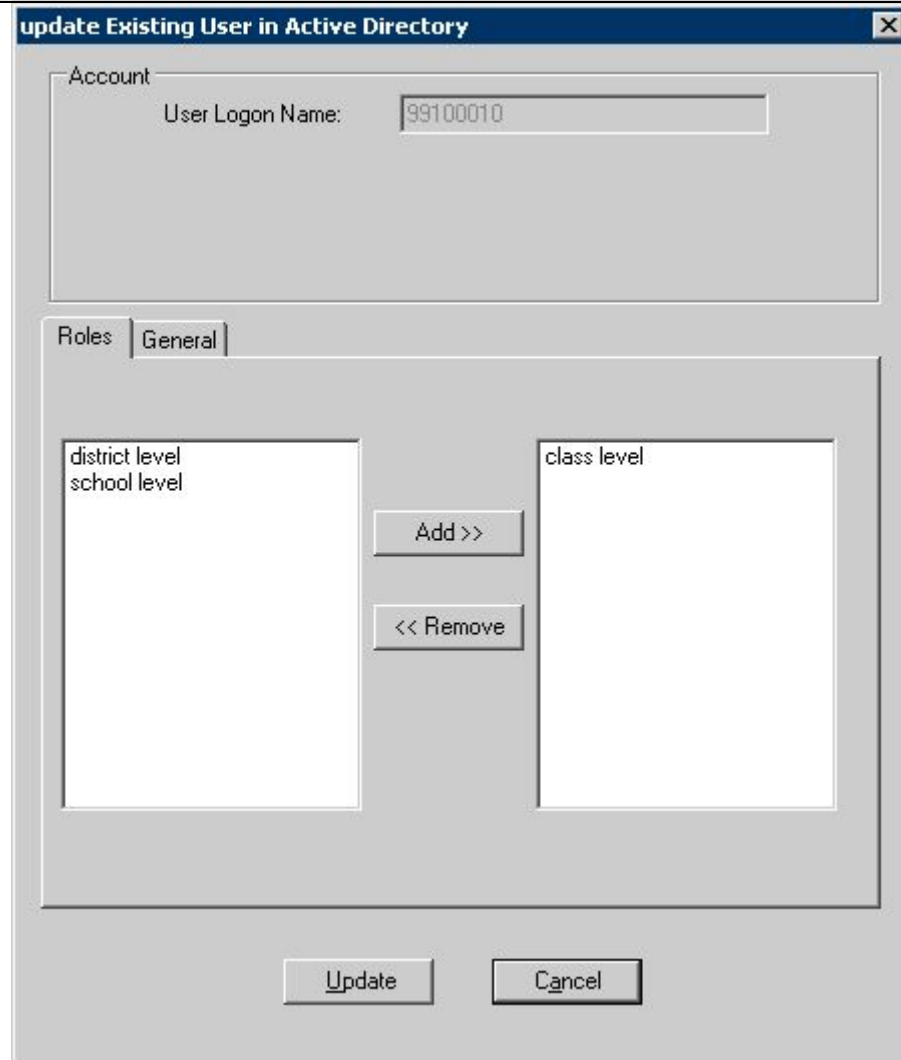
- *.a District Administrator closes ADAT
- 2.a District Administrator Binds to OU
 1. Continue at Step 4.
- 4.a District Administrator enters partial OU biding information.
 1. District Administrator doesn't enter a value in the Root OU input field.
 2. District Administrator enters a value in the Admin User Id input field.
 3. District Administrator enters a value in the Admin Password input field.
 4. District Administrator selects the Bind (button).
 5. District Administrator selects the "+" (expand) indicator to the left of the top level "District" folder.
 6. District Administrator selects an available OU
 7. Continue at Step 6
- 5.a Admin User Id is not recognized
 1. Click OK
 2. Continue at Step 2
- 5.b Admin Password incorrect



Flow of Events

1. Click OK
2. Continue at Step 2
- 6.a District Administrator double clicks User
 1. Continue at Step 0
- 8.a District Administrator closes ADAT
- 9.a Without selecting an Available role and "Add >>" (Button) selected
- 9.b District Administrator double clicks an assigned role

Related Documents





UC- Filter Users P1
ADAT-8

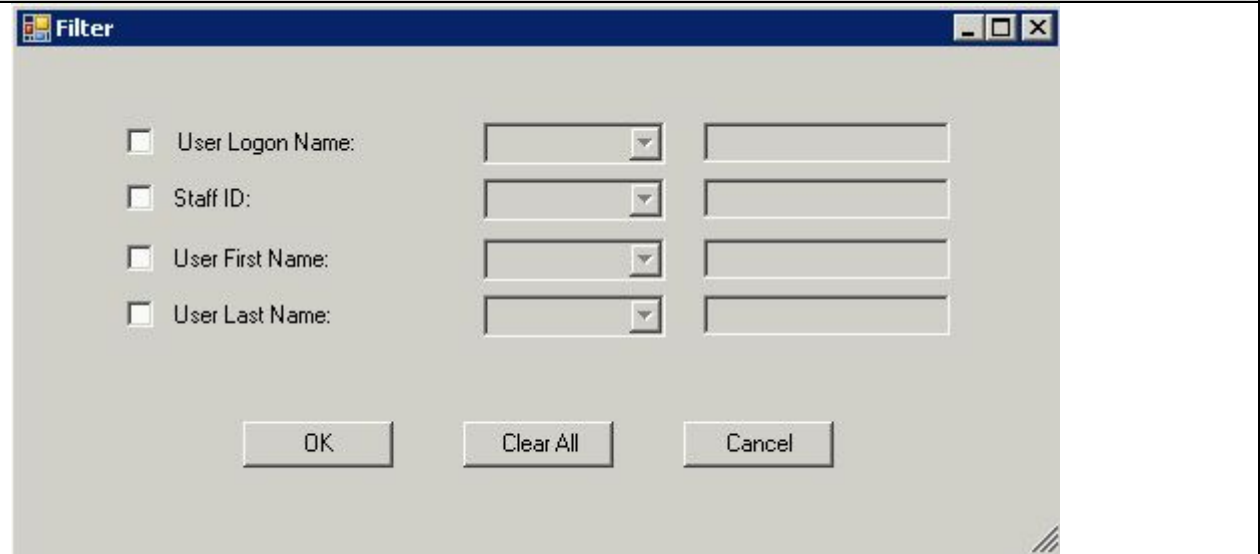
Details	
Parent: District Administrator	Supporting Actors:
Primary Actors: District Administrator	
Preconditions:	Success Guarantee:
Level:	Complexity:
Use Case Status:	Implementation Status:
Assigned To:	Release:
Flow of Events	
Main Success Scenario:	
<ol style="list-style-type: none">1. District Administrator launches the ADAT application.2. District Administrator binds to OU.3. District Administrator selects Bind from the AD drop down menu.4. District Administrator enters OU binding information.<ol style="list-style-type: none">4.1. District Administrator enters a value in the Root OU input field.4.2. District Administrator enters a value in the Admin User Id input field.4.3. District Administrator enters a value in the Admin Password input field.5. District Administrator selects the Bind (button).6. District Administrator selects Filter from the AD drop down menu.7. District Administrator enters filter criteria.<ol style="list-style-type: none">7.1. District Administrator filter based on User Logon Name7.2. District Administrator filter based on Staff Id7.3. District Administrator filter based on User First Name7.4. District Administrator filter based on User Last Name8. District Administrator saves filter information	
Extensions:	
*a District Administrator closes ADAT	
2.a District Administrator Binds to OU <ol style="list-style-type: none">1. Continue at Step 4.	
4.a District Administrator enters partial OU biding information. <ol style="list-style-type: none">1. District Administrator doesn't enter a value in the Root OU input field.2. District Administrator enters a value in the Admin User Id input field.3. District Administrator enters a value in the Admin Password input field.4. District Administrator selects the Bind (button).5. District Administrator selects the "+" (expand) indicator to the left of the top level "District" folder.6. District Administrator selects an available OU7. Continue at Step 0	
5.a Admin User Id is not recognized <ol style="list-style-type: none">1. Click OK2. Continue at Step 2	



Flow of Events

- 5.b Admin Password incorrect
 - 1. Click OK
 - 2. Continue at Step 2
- 7.a District Administrator clears filter selections
- 7.b
- 7.c District Administrator closes Filter screen
- 8.a District Administrator closes Filter screen
- 8.b District Administrator closes Filter screen

Related Documents





UC- Reset Existing User Password P1
ADAT-9

Details	
Parent: District Administrator	
Primary Actors: District Administrator	Supporting Actors:
Preconditions:	Success Guarantee:
Level:	Complexity:
Use Case Status:	Implementation Status:
Assigned To:	Release:
Flow of Events	
Main Success Scenario:	
<ol style="list-style-type: none">1. District Administrator launches the ADAT application.2. District Administrator binds to OU.3. District Administrator selects Bind from the AD drop down menu.4. District Administrator enters OU binding information.<ol style="list-style-type: none">4.1. District Administrator enters a value in the Root OU input field.4.2. District Administrator enters a value in the Admin User Id input field.4.3. District Administrator enters a value in the Admin Password input field.5. District Administrator selects the Bind (button).6. District Administrator highlights a User from the Assigned Users window7. District Administrator selects User from the system menu bar8. District Administrator selects Reset Password form the User drop down menu.9. District Administrator selects the OK (button)10. District Administrator closes ADAT	
Extensions:	
*.a District Administrator closes ADAT	
2.a District Administrator Binds to OU <ol style="list-style-type: none">1. Continue at Step 4.	
4.a District Administrator enters partial OU biding information. <ol style="list-style-type: none">1. District Administrator doesn't enter a value in the Root OU input field.2. District Administrator enters a value in the Admin User Id input field.3. District Administrator enters a value in the Admin Password input field.4. District Administrator selects the Bind (button).5. District Administrator selects the "+" (expand) indicator to the left of the top level "District" folder.6. District Administrator selects an available OU7. Continue at Step 6	
5.a Admin User Id is not recognized <ol style="list-style-type: none">1. Click OK2. Continue at Step 2	
5.b Admin Password incorrect <ol style="list-style-type: none">1. Click OK	



Flow of Events

- 2. Continue at Step 2
- 8.a District Administrator types Ctl+F6 on the keyboard

Related Documents

A screenshot of a Windows-style dialog box titled "update Existing User in Active Directory". The dialog has a blue title bar with a close button (X) on the right. Inside, there is a section labeled "Account" with a text box for "User Logon Name" containing the value "99100010". Below this is a "Roles" section with a "General" tab selected. It contains two list boxes: the left one has "district level" and "school level", and the right one has "class level". Between the list boxes are two buttons: "Add >>" and "<< Remove". At the bottom of the dialog are two buttons: "Update" and "Cancel".



UC- Download & Verify New SC P1
ADAT-10 Roles File

Details	
<p>Parent: District Administrator Primary Actors: District Administrator Preconditions: District Administrator has Read-Only rights to SC District Administration App Config Update document library. District Administrator set alert on SC District Administration App Config Update document library to be notified when any modifications have been made to the App Config file. District Administrator receives email alert of a modification to the App Config Update document library</p>	<p>Supporting Actors: Success Guarantee: Complexity: Implementation Status: Release:</p>
<p>Level: Use Case Status: Assigned To:</p>	<p>Complexity: Implementation Status: Release:</p>
Flow of Events	
<p>Main Success Scenario:</p> <ol style="list-style-type: none"> 1. District Administrator gets latest version of App Config 2. District Administrator launches Internet Explorer browser window 3. District Administrator navigates to SC District Administration site 4. District Administrator navigates to App Config Update document library 5. District Administrator gets latest on the App Config file 6. District Administrator saves App Config to District file server. 7. District Administrator pushes new App Config to District ADAT test client machine. 8. District Administrator verifies SC roles <ol style="list-style-type: none"> 8.1. District Administrator launches the ADAT application. 8.2. District Administrator binds to OU. 8.3. District Administrator selects Bind from the AD drop down menu. 8.4. District Administrator enters OU binding information. <ol style="list-style-type: none"> 8.4.1. District Administrator enters a value in the Root OU input field. 8.4.2. District Administrator enters a value in the Admin User Id input field. 8.4.3. District Administrator enters a value in the Admin Password input field. 8.5. District Administrator selects the Bind (button). 8.6. District Administrator selects User from the system menu bar. 8.7. District Administrator highlights a User from the Assigned Users window 8.8. District Administrator selects User from the system menu bar 8.9. District Administrator selects Edit from the User drop down menu. 	



Flow of Events

- 8.10. District Administrator closes ADAT
- 9. District Administrator pushes new App Config to District ADAT client machines.

Extensions:

- 8.2.a District Administrator Binds to OU
 - 1. Continue at Step 4.
- 8.4.a District Administrator enters partial OU bidding information.
 - 1. District Administrator doesn't enter a value in the Root OU input field.
 - 2. District Administrator enters a value in the Admin User Id input field.
 - 3. District Administrator enters a value in the Admin Password input field.
 - 4. District Administrator selects the Bind (button).
 - 5. District Administrator selects the "+" (expand) indicator to the left of the top level "District" folder.
 - 6. District Administrator selects an available OU
 - 7. Continue at Step 6
- 8.5.a Admin User Id is not recognized
 - 1. Click OK
 - 2. Continue at Step 2
- 8.5.b Admin Password incorrect
 - 1. Click OK
 - 2. Continue at Step 2
- 8.7.a District Administrator double clicks User in the Assigned Users window.
 - 1. Continue at Step 8.3



UC- Update ADAT Roles P1
ADAT-11 configuration File

Details

Parent: DOE

Primary Actors: DOE Administrator

Supporting Actors:

Preconditions: DOE Administrator has sufficient rights to create security groups on DOE AD.

Success Guarantee:

DOE Administrator has Contributor rights to SC District Administration App Config Update document library.

Level:

Complexity: Medium

Use Case Status:

Implementation Status:

Assigned To:

Release:

Flow of Events

Main Success Scenario:

- 1. DOE Administrator creates New Security Group in DOE AD.
2. DOE Administrator checks out App Config
3. DOE Administrator adds new SC role to App Config file
4. DOE Administrator
5. DOE Administrator launches the ADAT application.
6. DOE Administrator selects AD from the system menu bar.
7. DOE Administrator selects Bind from the AD drop down menu.
8. DOE Administrator enters a value in the Root OU input field.
9. DOE Administrator enters a value in the Admin User Id input field.
10. DOE Administrator enters a value in the Admin Password input field.
11. DOE Administrator selects the Bind (button).
12. DOE Administrator highlights a User from the Assigned Users window
13. DOE Administrator selects User from the system menu bar
14. DOE Administrator selects Edit form the User drop down menu.
15. DOE Administrator closes ADAT
16. DOE Administrator launches Internet Explorer browser window
17. DOE Administrator navigates to SC District Administration site
18. DOE Administrator navigates to App Config Update document library
19. DOE Administrator gets latest on the App Config file
20. DOE Administrator saves App Config to District file server.
21. DOE Administrator closes SC session
22.

Extensions:

11.a Root OU is blank

- 1. Continue at Step x



Flow of Events

- 11.b Admin User Id is not recognized
 - 1. Click OK
 - 2. Continue at Step 0
- 11.c Admin Password incorrect
 - 1. Click OK
 - 2. Continue at Step 0
- 12.a District Administrator double clicks User
 - 1. Continue at Step 11
- 14.a District Administrator closes ADAT