

Console shipping instructions

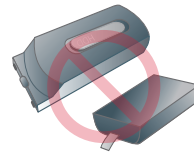


SEND

Please remove your hard drive and all accessories.



DO NOT SEND



Hard drive



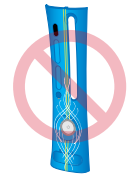
Controllers



Power supply



Camera



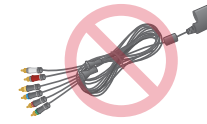
Custom faceplate



Messenger kit



Wireless networking adapter



A/V cables

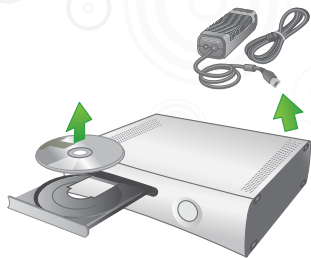


Games or DVDs



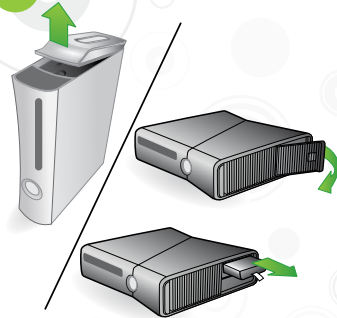
USB/Memory Unit

1



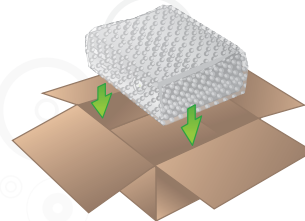
- Disconnect your power supply and all accessories, and remove disc from the console.
- If you have a custom faceplate, please remove it. [Learn how](#)

2



- Remove your hard drive. [Learn how](#) for an original Xbox 360 console. [Learn how](#) for an Xbox 360 S console
- Replace the hard drive cover if you have an Xbox 360 S.

3



- Obtain a shipping box and bubble wrap.
- Wrap your console with bubble wrap and put the console in the box.
- Make sure the console fits snugly, to reduce possible shipping damage. Microsoft is not responsible for any shipping damage.

4



- Seal the box with packing tape.
- Attach the shipping label to the box.
- Write down the tracking number from the shipping label.
- You can visit www.xbox.com/support to check your repair status at any time.

5



- Ship the package, and keep your shipping receipt.