



## Goals

- Understand Windows 7 media sharing technologies and features
- Clarify value in Windows 7 Logo program for Network Media Devices (NMD)
- Expedite development of devices that meet Windows 7 logo requirements

Microsoft  
WinHEC  
2008

## Agenda

- Windows 7 media sharing features
- Windows 7 feature demonstration
- Windows 7 logo requirements for network media devices
- Featured Partners

Microsoft  
WinHEC  
2008

## Windows 7 Uniquely Suited For Home Entertainment



**content**

- Pictures
- Music
- Videos
- Recorded TV

**devices**

- Extenders for Media Center
- Windows Home Server
- Xbox 360
- DLNA Media Servers, Renderers, and Controllers

Microsoft  
**WinHEC**  
2008

## Media Sharing In Windows 7 Guiding Principles

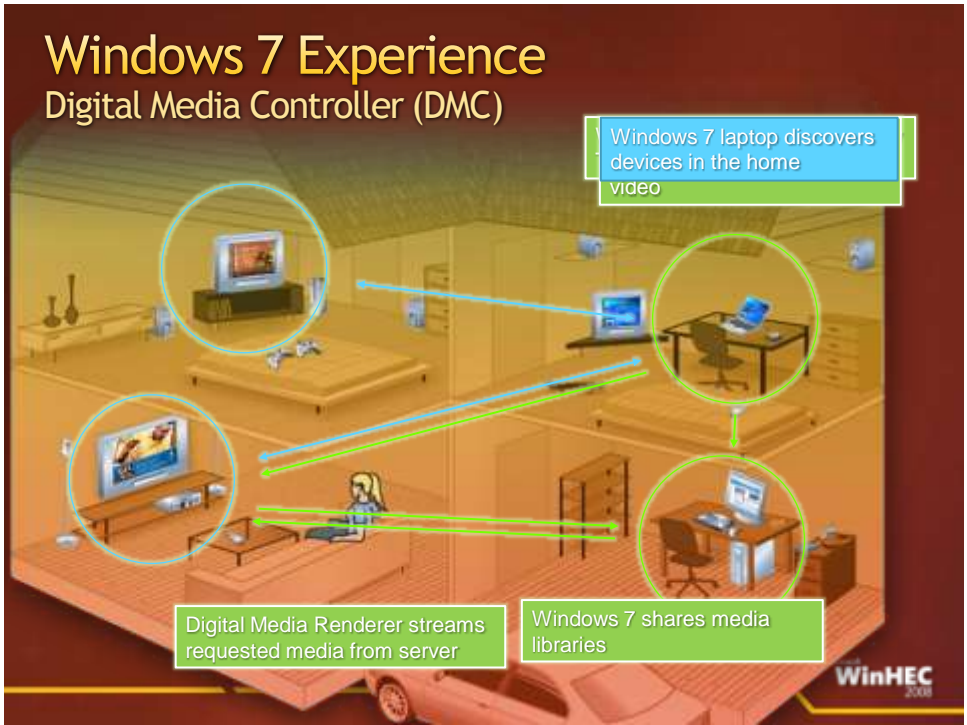
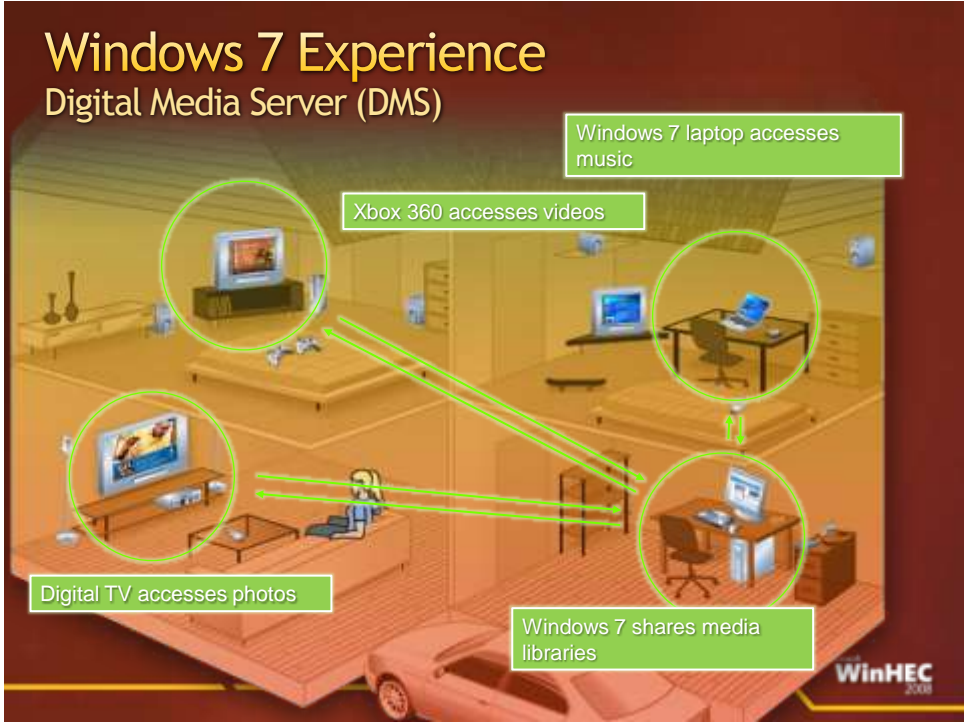
**Just Works** Simple, intuitive, and easy to use

**Enabling the Best Devices** Platform for Network Media Devices

**My Media Anywhere** Access to your media on any device in the home

**High Fidelity** Embrace media standards and implement with the highest quality

Microsoft  
**WinHEC**  
2008





## Windows 7 Experience

### Digital Media Renderer (DMR)

User browses server using cell phone

Cell Phone discovers devices in the home

Digital Media Renderer streams requested media from server

Windows 7 shares media libraries

WinHEC 2008

## Windows 7 Experience

### Transcoding

Windows exposes native file format and transcoded formats

From home theater, user chooses a video to play from  
Home theater chooses MPEG-2 RES element

Windows transcodes from MP4 to MPEG-2

WinHEC 2008

**demo**

**Windows 7  
Sharing Features**

WinHEC 2008

**Digital Living  
Network Alliance**

**Featured Speakers**

Scott Smyers Chair, DLNA Sony Electronics, Inc.	Pat Griffis Co-Chair, DLNA Microsoft Corporation
---	--

WinHEC 2008

## Introduction To DLNA

- Industry consortium
  - 250+ companies
  - Consumer Electronics
  - Computing Industry
  - Mobile Devices
  - Content distributors
- Goal: Establish an ecosystem of compatible products for networked media devices
- Develops standards-based specifications: "DLNA Guidelines"

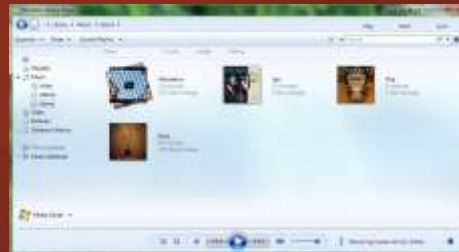


WinHEC  
2008

## Windows 7 Sharing Features

### Digital Media Server

- Windows 7 adds DLNA 1.5 DMS support
- Device may access shared media libraries
  - Music, Pictures, Videos, and Recorded TV\*



\* Only unprotected content

WinHEC  
2008

## Windows 7 Sharing Features

### Digital Media Server

- Device experience enhancements:
  - Album art
  - Video and image thumbnails
  - Rich metadata
  - Search and Browse
  - Metadata update (ratings)
  - Transcode (format/bitrate), and multiple RES elements

Microsoft  
WinHEC  
2008

## Windows 7 Sharing Features

### Digital Media Player & Renderer

- Support for DLNA DMP and DMR
- Windows Media Player features
  - Browsing libraries on by default
  - Server is primary node in player library
  - Library queries exposed as pivots
  - Album art
  - Video and image thumbnails

Microsoft  
WinHEC  
2008



## Windows 7 Sharing Features

### Digital Media Player & Renderer

- Windows Media Player features
  - Enhanced metadata
  - Search and browse
  - Enables device control of Windows Media Player
  - Improved codec support
- Windows Media Center features
  - Automatic discovery of DLNA DMS from PC and Extenders

Microsoft  
**WinHEC**  
2008

## Windows 7 Sharing Features

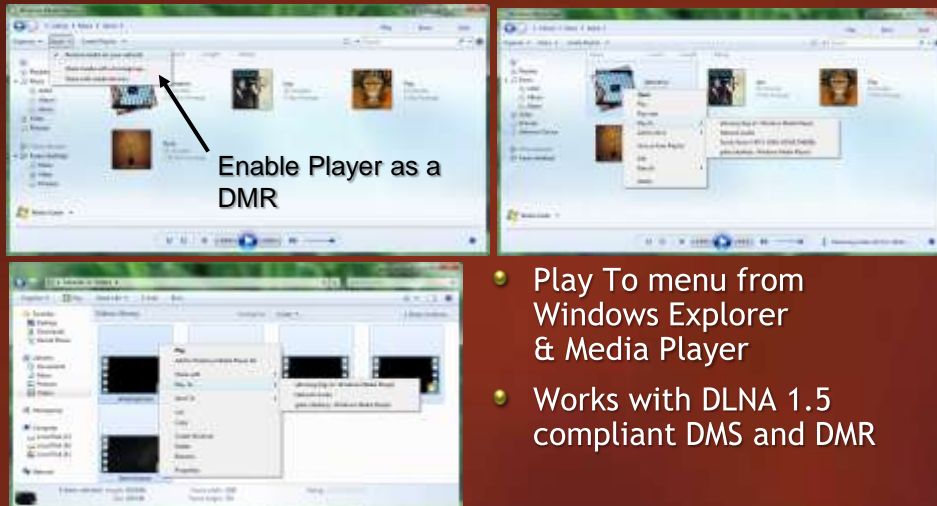
### Digital Media Player & Renderer



Microsoft  
**WinHEC**  
2008

## Windows 7 Sharing Features

### Digital Media Player & Renderer



- Play To menu from Windows Explorer & Media Player
- Works with DLNA 1.5 compliant DMS and DMR

WinHEC  
2008

## Windows 7 Sharing Features

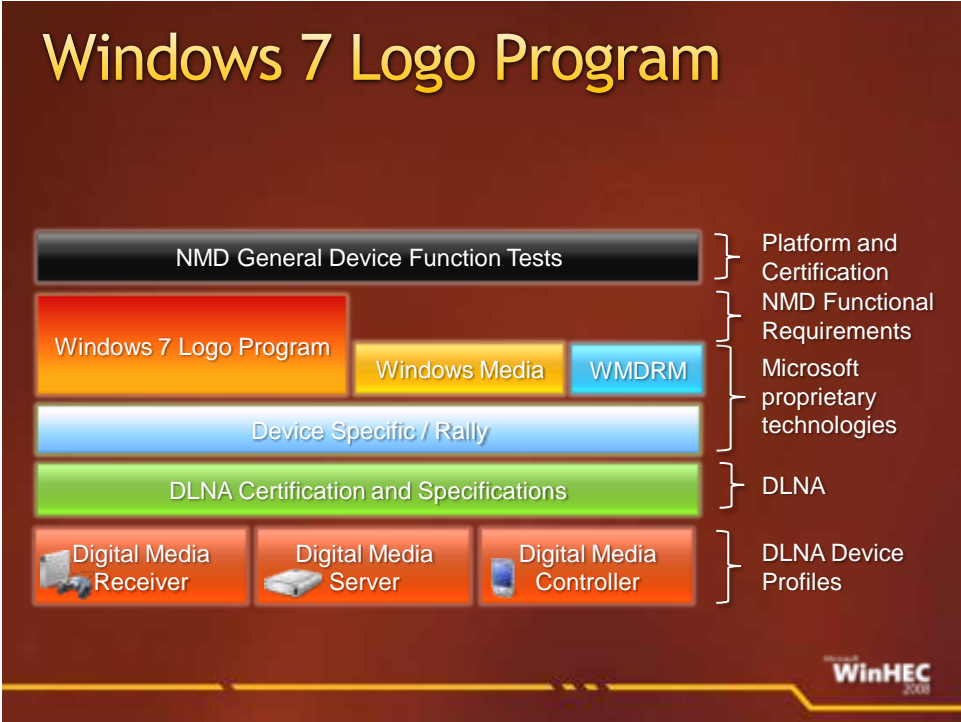
### Digital Media Controllers

- Windows 7 includes a DLNA compliant Digital Media Controller
- Windows Play To experience
  - Automatic device authorization through Play To context menu
  - Play To enabled for all media types:
    - Music, Pictures, Videos, Recorded TV\*



\* Only unprotected content

WinHEC  
2008



## 2009 Logo Requirement

Common to all devices

- All devices must be DLNA 1.5 certified
- Guarantees a baseline experience



Microsoft  
WinHEC  
2008

## 2009 Logo Requirement

Common to all devices

- Wake On LAN (WoL) support
  - Devices must support WoL either by sending or responding to Magic Packets as appropriate
  - DMC must wake sleeping devices
  - DMS should wake within 20 seconds



Microsoft  
WinHEC  
2008

## 2009 Logo Requirement

### Common to all devices

- DMS must declare support for resume from low power
  - DDD of DMS that supports low power mode

```
<microsoft:X_magicPacketWakeSupported xmlns:microsoft="urn:schemas-microsoft-com:WMPNSS-1-0">
  1
</ microsoft:X_magicPacketWakeSupported>
```

- DDD of DMS with no low power mode

```
<microsoft:X_magicPacketWakeSupported xmlns:microsoft="urn:schemas-microsoft-com:WMPNSS-1-0">
  0
</ microsoft:X_magicPacketWakeSupported>
```

WinHEC  
2008

## 2009 Logo Requirement

### Common to all devices

- Device needs to declare support for waking a sleeping DMS via Magic Packet
- Applies to DMC and DMR with MSCP

```
<microsoft:X_magicPacketSendSupported xmlns:microsoft="urn:schemas-microsoft-com:WMPNSS-1-0">
  1
</ microsoft:X_magicPacketSendSupported>
```

WinHEC  
2008



## 2009 Logo Requirement

### Common requirements to all DMS & DMR

- All devices must support Rally Technologies
  - Wi-Fi Protected Setup (WPN 2.0)
  - Link Layer Topology Discovery (LLTD)

Microsoft  
WinHEC  
2008

## 2009 Logo Requirement

### Common requirements to all DMS & DMR

- UPnP device description document (DDD) must contain metadata that Windows uses for discovery and configuration

```
<device>
  <pnp:X_compatibleId
  xmlns:pnp="http://schemas.microsoft.com/windows/pnp/2005/11">
    MS_DigitalMediaDeviceClass_V001
  </pnp:X_compatibleId>
  <pnp:X_deviceCategory
  xmlns:pnp="http://schemas.microsoft.com/windows/pnp/2005/11">
    MediaDevice.DMR
  </pnp:X_deviceCategory>
</device>
```

Microsoft  
WinHEC  
2008

## 2009 Logo Requirement Device installation experience



## 2009 Logo Requirement Common requirements to all DMS & DMR

- All devices must allow the user to rename the device to a friendly name
- One common location to rename your device through windows



## 2009 Logo Requirement

Common requirements to all DMS & DMR

- All devices must support common metadata



Music metadata

WinHEC  
2008

## 2009 Logo Requirement

Common requirements to all DMS & DMR

- All devices must support basic transport support
- DLNA requires play and stop
- Windows Logo additionally requires pause and seek

WinHEC  
2008

## 2009 Logo Requirement DMR only

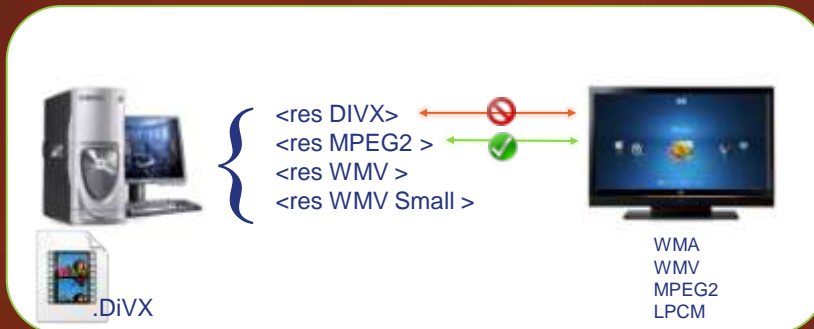
- All DMRs must support volume control



WinHEC 2008

## 2009 Logo Requirement DMR only

- DMRs must use best supported RES element



WinHEC 2008

## 2009 Logo Requirement

### DMR only

- DMRs should support WMDRM-ND



WinHEC  
2008

## 2009 Logo Requirement

### DMR only

- DMR must support metadata Update Object

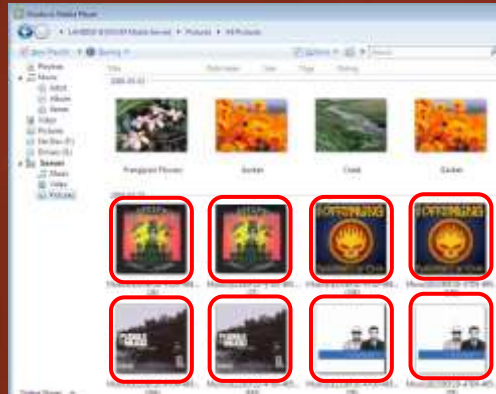


WinHEC  
2008



## 2009 Logo Requirement DMS only

- DMS must not display album art as photos



WinHEC  
2008

## 2009 Logo Requirement DMS only

- DMS must provide album art when available

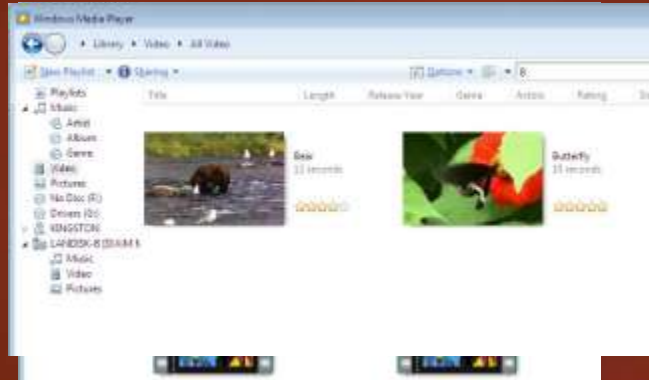


WinHEC  
2008

## 2009 Logo Requirement

### DMS only

- DMR must provide video thumbnails when available



## 2009 Logo Requirement Overview

- Key Windows 7 Logo Program benefits
  - Windows transcode support saves you money
  - Moving towards “green” devices with WoL
  - Plenty of room for differentiation!
  - Decreased customer support
  - Best user experience

## Our Commitment To You

- Windows 7 will seamlessly work with your DLNA compliant devices
- Windows 7 will make configuring your device straight forward and simple
- Windows 7 will make sharing content in the home painless
- Windows 7 will save you money by providing transcoding to standards

Microsoft  
WinHEC  
2008

## Call To Action

- Create DLNA 1.5 compliant devices
- Investigate differentiating options
- If you are developing a DMP, make sure it is a certified DMR as well
- Deliver Windows 7 logo'd devices in 2009

Microsoft  
WinHEC  
2008

# I-O DATA DigiOn

## Featured Partners

Yoshi Hirano General Manager I-O Data Device, Inc.	Hiro Someya Director of Marketing DigiOn, Inc.
--	--

Microsoft  
WinHEC  
2008

## Product Line And Using Tools Demonstrating devices

- DMR: AV-LS500W VPR Set Top Box
- DMS: LANDISK Home (HDL-4)
- Firmware: DigiOn DiXiM SDK new version



I-O DATA

Microsoft  
WinHEC  
2008

## DigiOn's DiXiM SDK New Package Supporting Windows 7 Logo Requirement

- Quality Proven Home Network SDK
- Newly Featured Windows 7 Logo Req'ts
- Available on Nov. 28<sup>th</sup>, 2008
- DMR/DMS Testing Device - Option Available
- Additional information : [www.digion.com](http://www.digion.com)



WinHEC  
2008

## Additional Resources

### Web Resources:

- Windows Hardware Developer Central
  - <http://www.microsoft.com/whdc>
- Whitepapers:
  - Design Guidelines and Considerations for Building Windows Certified Network Media Devices: <http://go.microsoft.com/fwlink/?LinkId=131088>
  - Connected Digital Picture Frames: Analysis and Specifications <http://go.microsoft.com/fwlink/?LinkId=131089>
- Other Resources:
  - "Building a Network Device Compatible with Microsoft Windows Media Player 11": <http://go.microsoft.com/fwlink/?LinkId=87957>
  - UPnP MediaServer Media Controller and MediaRenderer-related specifications: <http://www.upnp.org/standardizeddcp/mediaserver.asp>
  - Windows Logo Requirements: <http://www.microsoft.com/whdc/winlogo/default.aspx>
  - DLNA Information: <http://www.dlna.org>

WinHEC  
2008



## Additional Resources

- Related Technical Sessions
  - *Building Digital Picture Frames using Microsoft Technologies*
  - *Unifying the Wireless and Network Device Installation Experience in Windows 7*
- Related Chalk Talks on Friday
  - *Chalk Talk: Windows Connect Now for Wireless Devices*
  - *Windows 7 Logo Program and Design Considerations for Network Infrastructure Devices*
- Contact Info: [NMDInfo@Microsoft.com](mailto:NMDInfo@Microsoft.com)

Microsoft  
WinHEC  
2008

## Please Complete A Session Evaluation Form Your input is important!

Visit the WinHEC CommNet and complete a Session Evaluation for this session and be entered to **win one of 150 Maxtor® BlackArmor™ 160GB External Hard Drives**  
*50 drives will be given away daily!*

**Maxtor** BlackArmor  
Hard Drives provided by:



<http://www.winhec2008.com>

Microsoft  
WinHEC  
2008



© 2008 Microsoft Corporation. All rights reserved. Microsoft, Windows, Windows Vista and other product names are or may be registered trademarks and/or trademarks in the U.S. and/or other countries. The information herein is for informational purposes only and represents the current view of Microsoft Corporation as of the date of this presentation. Because Microsoft must respond to changing market conditions, it should not be interpreted to be a commitment on the part of Microsoft, and Microsoft cannot guarantee the accuracy of any information provided after the date of this presentation. MICROSOFT MAKES NO WARRANTIES, EXPRESS, IMPLIED OR STATUTORY, AS TO THE INFORMATION IN THIS PRESENTATION.