



Microsoft

www.microsoft.com/hardware

ENGLISH - EN

日本語 - JA

简体中文 - XT

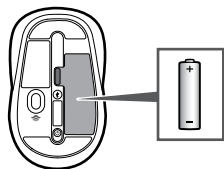
한국어 - KO

繁體中文 - ZH

हंदी - HI

ไทย - TH

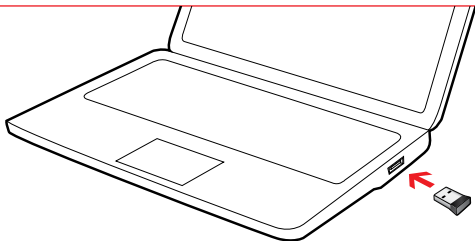
①



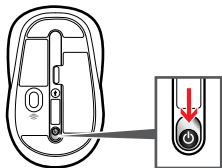
②



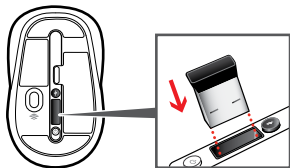
www.microsoft.com/hardware/productguide



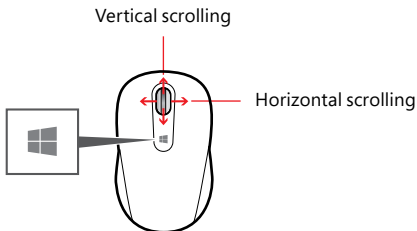
i1




i2




www.microsoft.com/hardware/support



Tap the Windows button  to switch between an open app and the Start screen.

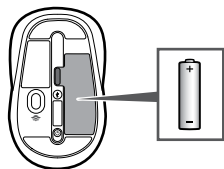
Customization

Windows 8: Press  + **W** on your keyboard (or swipe in from the right). Tap or click **Search**, then **Settings**, then enter **action center** in the Search box. In the Action Center, under Maintenance, then Device software, choose **Install**.

Windows 7: The Mouse and Keyboard Center app is available from the Start menu.

www.microsoft.com/hardware/downloads

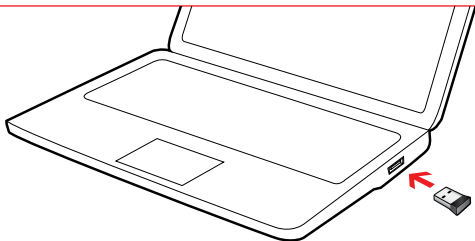
①



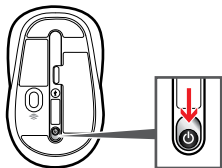
②



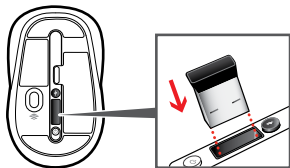
www.microsoft.com/hardware/productguide



i1

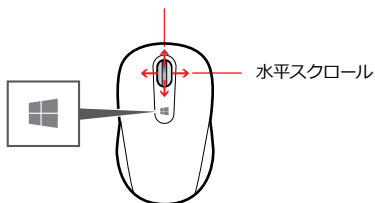



i2




www.microsoft.com/hardware/support

垂直スクロール



Windows ボタン  をタップすると、開いているアプリとスタート画面を切り替えることができます。

カスタマイズの準備

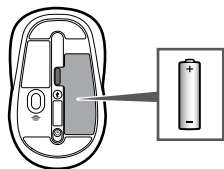
Windows 8: キーボードの  と **W** キーを押します (または画面の右端から内側にスワイプします)。

[検索]、[設定] の順にタップまたはクリックし、検索ボックスに「**アクションセンター**」と入力します。[アクションセンター] の [メンテナンス] の下にある [デバイスのソフトウェア] で、**[インストール]** を選択します。

Windows 7: マウス キーボード センター アプリを [スタート] メニューから使用できます。

www.microsoft.com/hardware/downloads

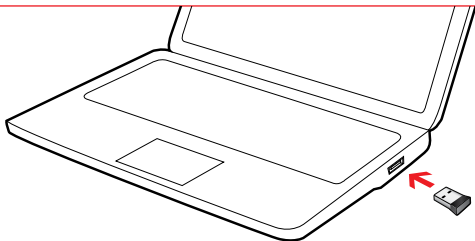
1



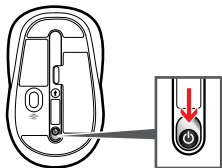
2



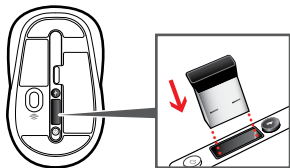
www.microsoft.com/hardware/productguide



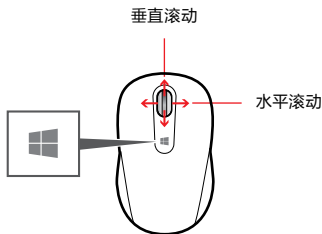
i1



i2




www.microsoft.com/hardware/support



点击 Windows 按钮  以便在打开的应用程序和“开始”屏幕之间切换。

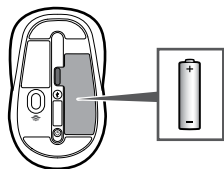
自定义

Windows 8: 按键盘上的  + W (或从右侧轻扫)。点击或单击“搜索”，接着单击“设置”，然后在搜索框中输入**操作中心**。在“操作中心”中，从“维护”下方的“设备软件”中，选择“**安装**”。

Windows 7: 可以使用“开始”菜单中的“鼠标和键盘中心”应用。

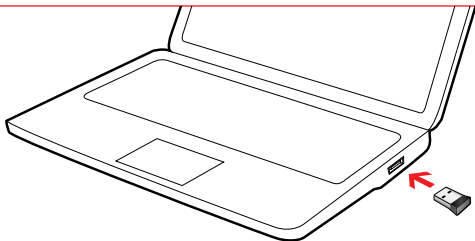
www.microsoft.com/hardware/downloads

1

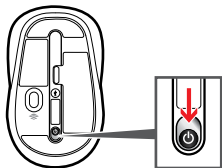


www.microsoft.com/hardware/productguide

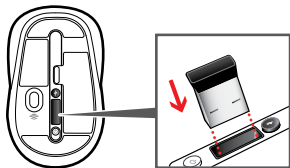
2



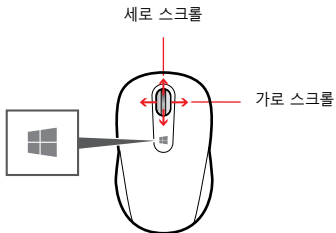
i1



i2



www.microsoft.com/hardware/support



Windows 버튼(☐)를 탭하여 사용 중인 앱과 시작 화면 간을 전환합니다.

사용자 지정

Windows 8: 키보드에서 **☐ + W** 키를 누릅니다(또는 화면 오른쪽에서 안으로 살짝 밀기).

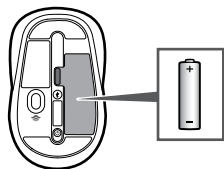
검색, 설정을 차례로 탭 또는 클릭한 다음 검색 상자에 관리 센터를 입력합니다. 유지 관리의 관리 센터에서 장치 소프트웨어에 대해 설치를 선택합니다.

Windows 7: 마우스 및 키보드 센터 응용 프로그램이 시작 메뉴에서 사용 가능합니다.

www.microsoft.com/hardware/downloads

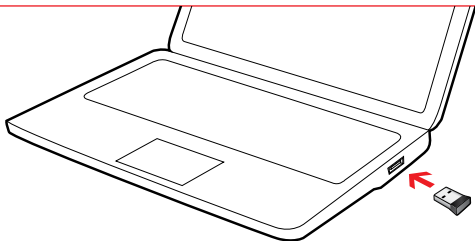
이 기기는 가정용(B급) 전자파적합기기로서 주로 가정에서 사용하는 것을 목적으로 하며, 모든 지역에서 사용할 수 있습니다.

1

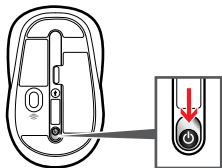


www.microsoft.com/hardware/productguide

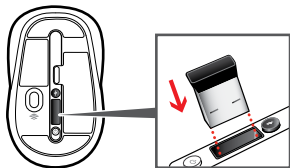
2



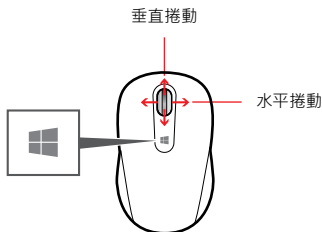
i1




i2




www.microsoft.com/hardware/support



點選 Windows 按鈕  以便在開啟的應用程式和 [開始] 畫面之間切換。

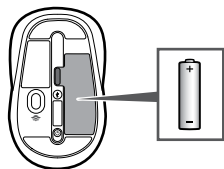
自訂

Windows 8: 按下鍵盤上的  + **W** (或從右側滑動)。點選或按一下 [搜尋]，再按一下 [設定]，然後在 [搜尋] 方塊中輸入 **重要訊息中心**。在 [重要訊息中心] 中，於 [維護] 下方的 [裝置軟體]，選擇 [安裝]。

Windows 7: 可從 [開始] 功能表使用滑鼠和鍵盤中心應用程式。

www.microsoft.com/hardware/downloads

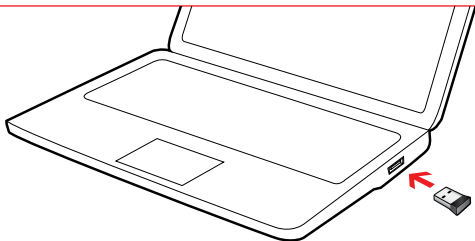
1



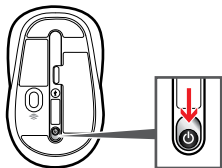
2



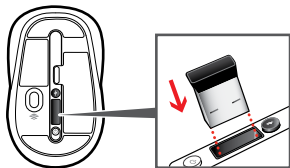
www.microsoft.com/hardware/productguide



i1

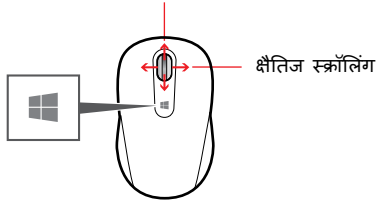



i2




www.microsoft.com/hardware/support

लंबवत् स्कॉलिंग



खुले ऐप और प्रारंभ स्क्रीन के बीच स्विच करने के लिए Windows बटन  टैप करें.

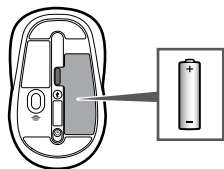
कस्टमाइज़ेशन

Windows 8: अपने कीबोर्ड पर  + **W** दबाएँ (या दाईं ओर स्वाइप करें). **खोज** टैप या क्लिक करें, फिर **सेटिंग** टैप या क्लिक करें, फिर खोज बॉक्स में **कार्रवाई केंद्र** दर्ज करें. कार्रवाई केंद्र में, रख-रखाव, फिर डिवाइस सॉफ्टवेयर के अंतर्गत, **स्थापित करें** चुनें.

Windows 7: माउस और कीबोर्ड केंद्र ऐप प्रारंभ मेनू से उपलब्ध है.

www.microsoft.com/hardware/downloads

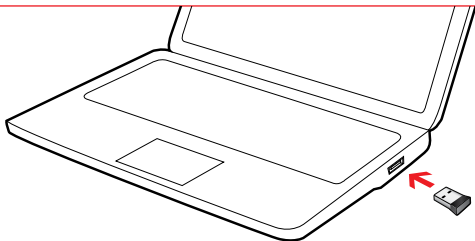
1



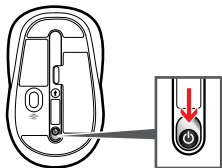
2



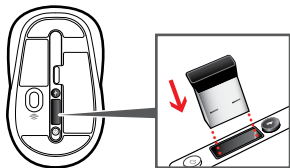
www.microsoft.com/hardware/productguide



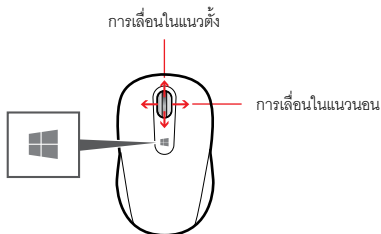
i1




i2




www.microsoft.com/hardware/support



แต่ที่ปุ่ม Windows  เพื่อสลับไปมาระหว่างโปรแกรมที่เปิดอยู่และหน้าจอเริ่มต้น

การปรับ

Windows 8: กด  + W บนแป้นพิมพ์ของคุณ (หรือกดเข้าจากทางขวา) และหรือคลิก ค้นหา แล้วแตะ การตั้งค่า จากนั้นใส่ ศูนย์ปฏิบัติการในกล่องค้นหา ในศูนย์ปฏิบัติการ เข้าไปที่การบำรุงรักษา แล้วไปที่ ซอฟต์แวร์ของอุปกรณ์ เลือก ติดตั้ง

Windows 7: สามารถหาโปรแกรม Mouse and Keyboard Center ได้จาก เมนูเริ่ม www.microsoft.com/hardware/downloads



X18-80162-02
