



Microsoft

www.microsoft.com/hardware

ENGLISH - EN

العربية - AR

ČEŠTINA - CS

NEDERLANDS - NL

FRANÇAIS - FR

ΕΛΛΗΝΙΚΑ - EL

ITALIANO - IT

PORTUGUÊS - PT

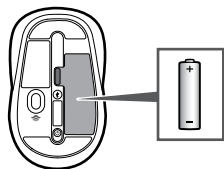
РУССКИЙ - RU

ESPAÑOL - ES

УКРАЇНСЬКА – UK

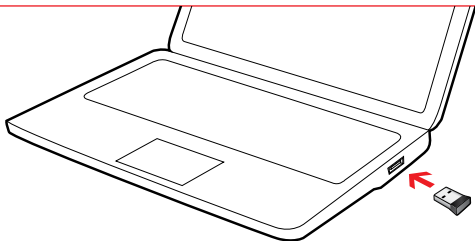
SRPSKI - SR

1

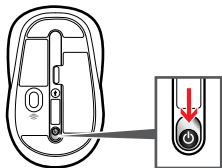


www.microsoft.com/hardware/productguide

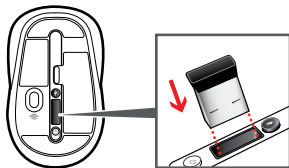
2



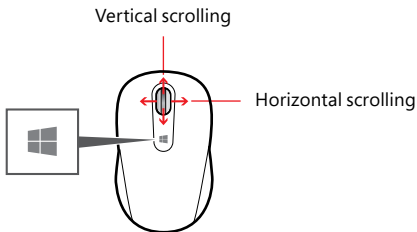
i1




i2




www.microsoft.com/hardware/support



Tap the Windows button  to switch between an open app and the Start screen.

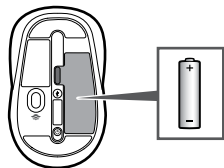
Customization

Windows 8: Press  + **W** on your keyboard (or swipe in from the right). Tap or click **Search**, then **Settings**, then enter **action center** in the Search box. In the Action Center, under Maintenance, then Device software, choose **Install**.

Windows 7: The Mouse and Keyboard Center app is available from the Start menu.

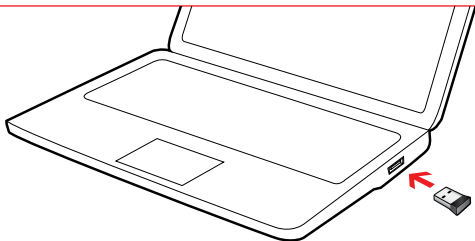
www.microsoft.com/hardware/downloads

1

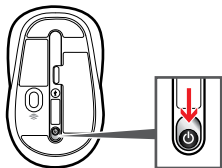


www.microsoft.com/hardware/productguide

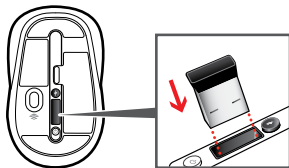
2



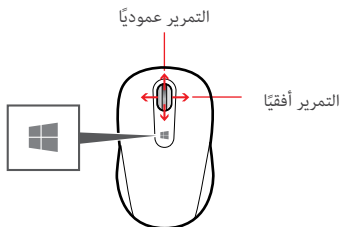
i1



i2



www.microsoft.com/hardware/support



اضغط برفق فوق زر Windows للتبديل بين تطبيق مفتوح والشاشة ابدأ.

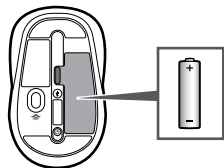
التخصيص

نظام **Windows 8**: اضغط على **W** + **Windows** على لوحة المفاتيح (أو قم بالتمرير من اليمين). اضغط برفق أو انقر فوق "بحث"، ثم "إعدادات"، ثم أدخل مركز الإجراءات في المربع "بحث" في مركز الإجراءات، ضمن "صيانة"، ثم البرنامج "جهاز"، اختر "تثبيت".

نظام **Windows 7**: يتوفر تطبيق مركز لوحة المفاتيح وأجهزة الماوس من القائمة "ابدأ".

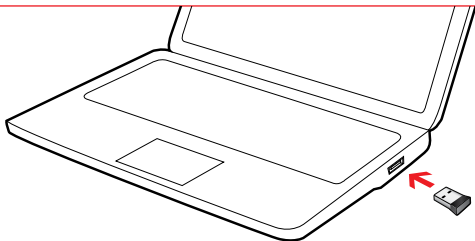
www.microsoft.com/hardware/downloads

1

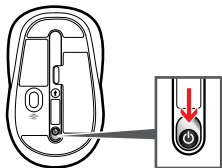


www.microsoft.com/hardware/productguide

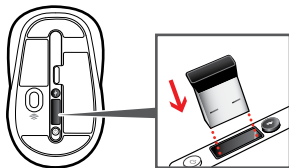
2



i1

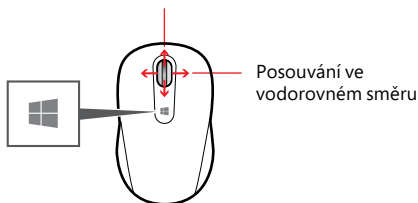



i2




www.microsoft.com/hardware/support

Posouvání ve svislém směru



Klepnutím na dotekové tlačítko Windows  se dá přepínat mezi otevřenou aplikací a úvodní obrazovkou.

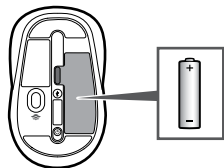
Možnost provádění úprav

Windows 8: Stiskněte na klávesnici  + **W** (nebo potáhněte prstem z pravé strany). Klepněte nebo klikněte na **Hledat** a na **Nastavení** a do vyhledávacího pole zadejte **centrum akcí**. V Centru akcí v oddílu Údržba zvolte Software zařízení a pak **Nainstalovat**.

Windows 7: Aplikace Mouse and Keyboard Center je dostupná v nabídce Start.

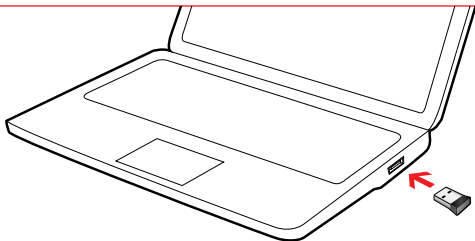
www.microsoft.com/hardware/downloads

1

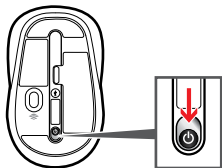


www.microsoft.com/hardware/productguide

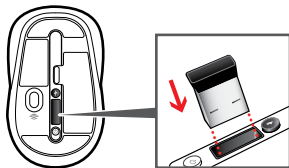
2



i1

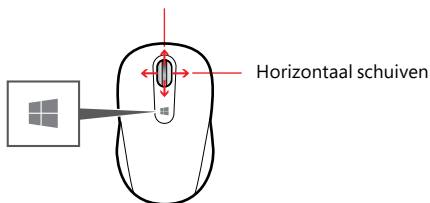



i2




www.microsoft.com/hardware/support

Verticaal schuiven



Tik op de Windows-knop  als u wilt schakelen tussen een open app en het Start-scherm.

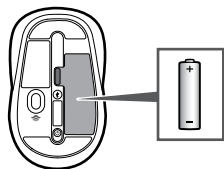
Aanpassing

Windows 8: Druk op  + **W** op uw toetsenbord (of veeg van rechts naar binnen). Tik of klik op **Zoeken**, vervolgens op **Instellingen** en voer **Onderhoudscentrum in** in het Zoekvenster. Kies in het Onderhoudscentrum onder Onderhoud en vervolgens Apparaatsoftware de optie **Installeren**.

Windows 7: De app Muis- en toetsenbordcentrum is beschikbaar vanaf het menu Start.

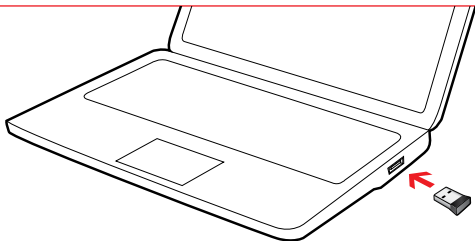
www.microsoft.com/hardware/downloads

1

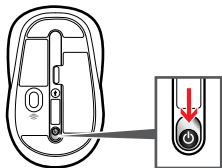


www.microsoft.com/hardware/productguide

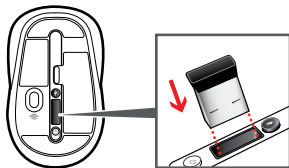
2



i1

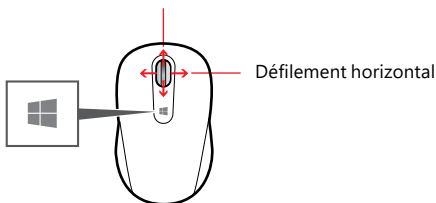


i2




www.microsoft.com/hardware/support

Défilement vertical



Appuyez sur le bouton Windows  pour passer d'une application ouverte à l'écran de démarrage.

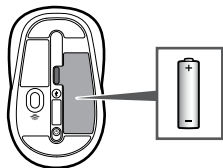
Personnalisation

Windows 8: Appuyez sur  + **W** sur votre clavier (ou effectuez un balayage en partant de la droite). Appuyez ou cliquez sur **Rechercher**, puis sur **Paramètres**, et entrez ensuite « **centre de maintenance** » dans la zone Rechercher. Dans le Centre de maintenance, sous Maintenance, puis Logiciel de périphérique, choisissez **Installer**.

Windows 7: l'application Centre Souris et Claviers Microsoft est disponible dans le menu Démarrer.

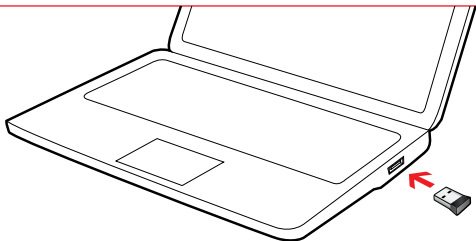
www.microsoft.com/hardware/downloads

1

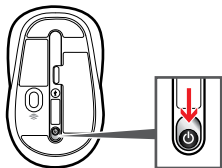


www.microsoft.com/hardware/productguide

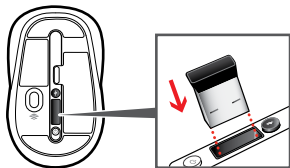
2



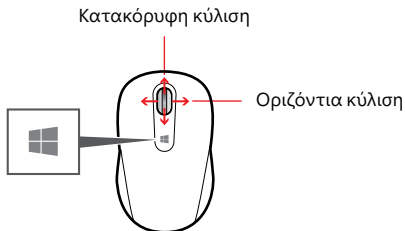
i1



i2




www.microsoft.com/hardware/support



Πατήστε το κουμπί των Windows  για να κάνετε εναλλαγή μεταξύ μιας ανοιχτής εφαρμογής και της οθόνης έναρξης.

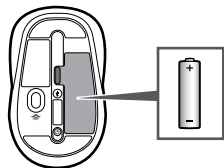
Προσαρμογή

Windows 8: Πατήστε  + **W** στο πληκτρολόγιό σας (ή κάντε σάρωση από τα δεξιά προς τα αριστερά). Πατήστε ή κάντε κλικ στην επιλογή "Αναζήτηση", στη συνέχεια, επιλέξτε "Ρυθμίσεις" και πληκτρολογήστε "κέντρο ενεργειών" στο πλαίσιο αναζήτησης. Στο Κέντρο ενεργειών, επιλέξτε την ενότητα "Συντήρηση", έπειτα "Λογισμικό συσκευής" και, στη συνέχεια, "Εγκατάσταση".

Windows 7: Η εφαρμογή Mouse and Keyboard Center είναι διαθέσιμη από το μενού "Έναρξη".

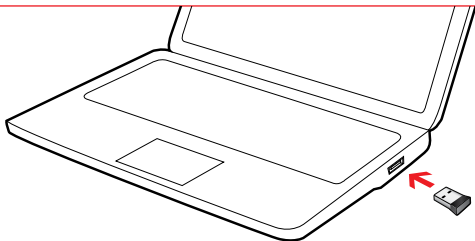
www.microsoft.com/hardware/downloads

1

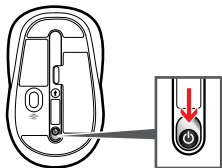


www.microsoft.com/hardware/productguide

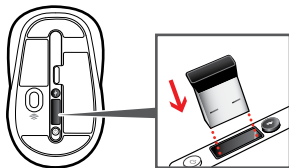
2



i1

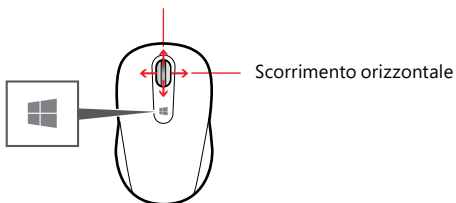



i2




www.microsoft.com/hardware/support

Scorrimento verticale



Toccare il pulsante Windows  per passare da un'app aperta alla schermata Start.

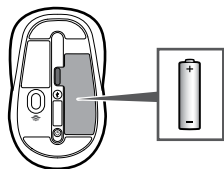
Personalizzazione

Windows 8: premere  + il tasto **W** della tastiera (o scorrere da destra). Toccare o fare clic su **Cerca**, scegliere **Impostazioni**, quindi immettere **Centro operativo** nella casella di ricerca. In Centro operativo, sotto Manutenzione e Software per i dispositivi, scegliere **Installa**.

Windows 7: l'app Centro gestione Mouse e Tastiere è disponibile nel menu Start.

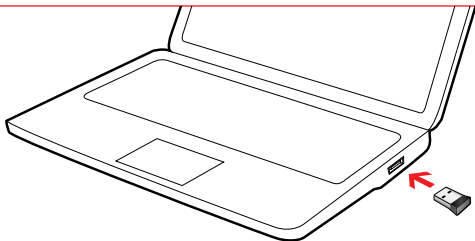
www.microsoft.com/hardware/downloads

1

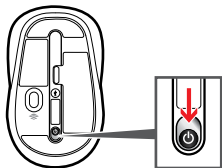


www.microsoft.com/hardware/productguide

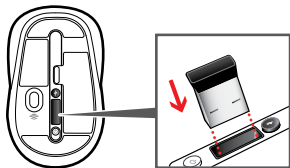
2



i1

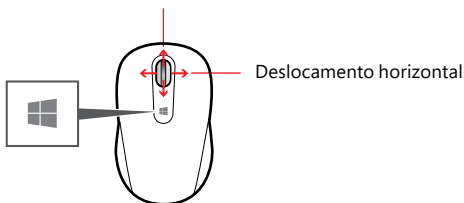



i2




www.microsoft.com/hardware/support

Deslocamento vertical



Toque na tecla Windows  para alternar entre uma aplicação aberta e o Ecrã inicial.

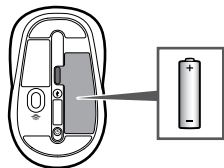
Personalização

Windows 8: Prima  + **W** no teclado (ou deslize a partir da direita). Toque ou clique em **Pesquisar**, depois em **Definições** e, em seguida, escreva **centro de ação** na caixa de Pesquisa. No Centro de Ação, em Manutenção e, em seguida, em Software do dispositivo, selecione **Instalar**.

Windows 7: a aplicação Centro de Teclados e Ratos está disponível no menu Iniciar.

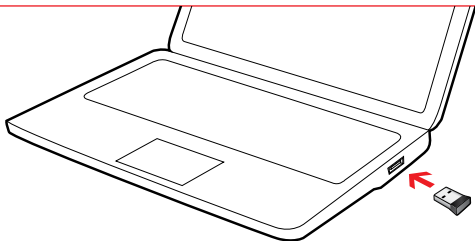
www.microsoft.com/hardware/downloads

①

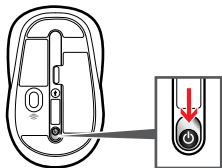


www.microsoft.com/hardware/productguide

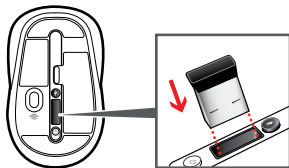
②



i1

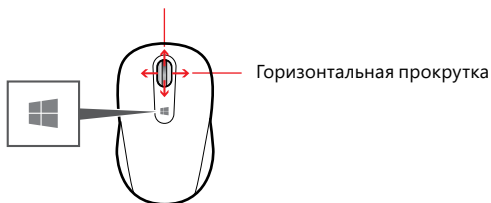



i2




www.microsoft.com/hardware/support

Вертикальная прокрутка



Для переключения между открытым приложением и начальным экраном коснитесь кнопки Windows .

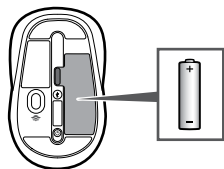
Настройка

В системе Windows 8. Нажмите клавиши  + **W** (или проведите пальцем от правого края экрана к левому). Выберите пункты «Поиск» и «Параметры» и введите в поле поиска запрос «центр поддержки». В центре поддержки выберите в разделе «Обслуживание» пункты «Программное обеспечение для устройств» и «Установить».

В системе Windows 7. Приложение «Центр управления мышью и клавиатурой» доступно через меню «Пуск».

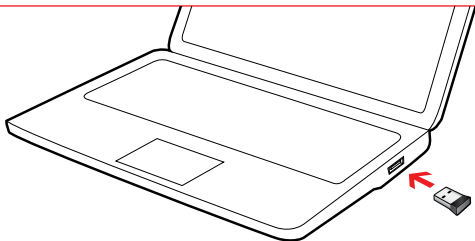
www.microsoft.com/hardware/downloads

1

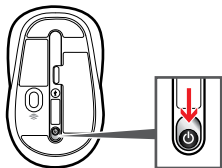


www.microsoft.com/hardware/productguide

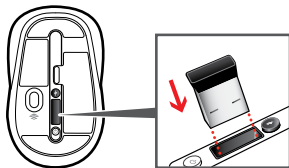
2



i1

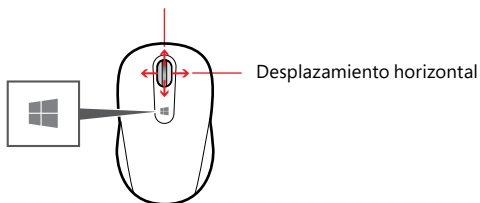



i2




www.microsoft.com/hardware/support

Desplazamiento vertical



Puntee en el botón Windows  para cambiar entre una aplicación abierta y la pantalla Inicio.

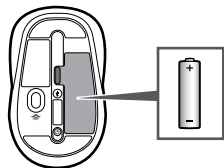
Personalización

Windows 8: presione  + **W** en el teclado (o deslice el dedo rápidamente desde el lado derecho). Puntee o haga clic en **Buscar**, elija **Configuración** y, a continuación, escriba **Centro de actividades** en el cuadro de búsqueda. En el Centro de actividades, bajo Mantenimiento y Software de dispositivo, elija **Instalar**.

Windows 7: la aplicación Centro de Ratón y Teclado está disponible en el menú Inicio.

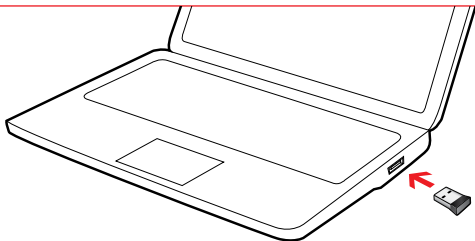
www.microsoft.com/hardware/downloads

1

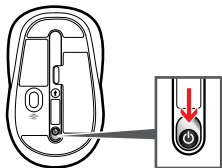


www.microsoft.com/hardware/productguide

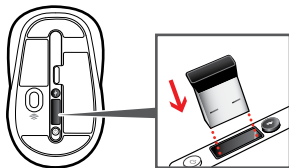
2



i1

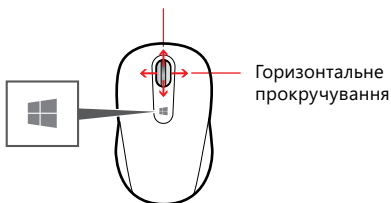



i2




www.microsoft.com/hardware/support

Вертикальне прокручування



Торкніться кнопки Windows , щоб переключитися між відкритою програмою і початковим екраном.

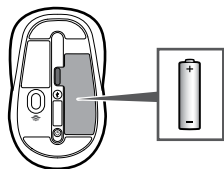
Настроювання

Windows 8: натисніть на клавіатурі комбінацію клавіш  + **W** або проведіть пальцем від правого краю екрана. Натисніть "Пошук", а потім — "Налаштування". Після цього введіть у полі пошуку "центр підтримки". У центрі підтримки виберіть розділ "Обслуговування" й біля елемента "Програмне забезпечення пристрою" натисніть "Інсталиювати".

Windows 7: програму Microsoft Mouse and Keyboard Center можна запустити з меню "Пуск".

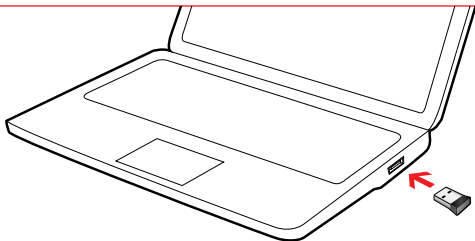
www.microsoft.com/hardware/downloads

1

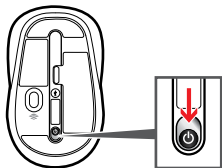


www.microsoft.com/hardware/productguide

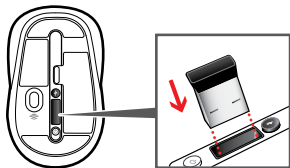
2



i1

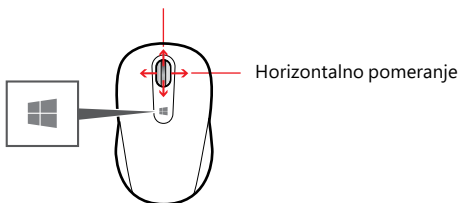



i2




www.microsoft.com/hardware/support

Vertikalno pomeranje



Dodirnite dugme „Windows“  da biste se prebacivali sa otvorene aplikacije na početni ekran i obrnuto.

Prilagođavanje

Windows 8: Pritisnite tastere  + **W** na tastaturi (ili prevucite ka unutra sa desne strane). Dodirnite ili kliknite na dugme „Pretraga“, zatim „Postavke“ i unesite **centar radnje** u polje za pretragu. U centru radnje, u okviru stavki „Održavanje“, „Softver uređaja“ odaberite stavku „Instaliraj“.

Windows 7: Aplikacija „Centar za miša i tastaturu“ dostupna je sa početnog ekrana iz Start menija.

www.microsoft.com/hardware/downloads



X18-80161-02
