



Microsoft

www.microsoft.com/hardware

ENGLISH - EN

DANSK - DA

FINNISH - FI

DEUTSCH - DE

HE - ד'יחטשמ

MAGYAR - HU

NORSK - NO

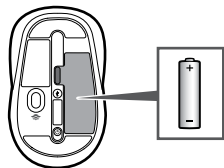
POLSKI - PL

ROMÂNĂ - RO

SVENSKA - SV

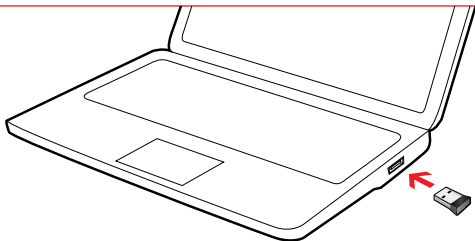
TÜRKÇE - TR

1

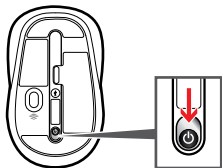


www.microsoft.com/hardware/productguide

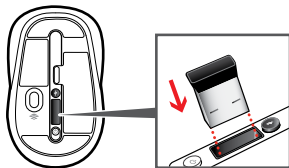
2



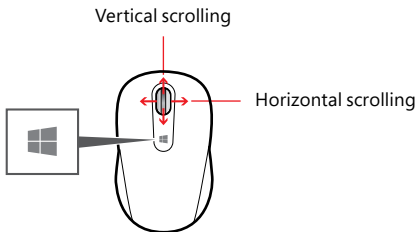
i1




i2




www.microsoft.com/hardware/support



Tap the Windows button  to switch between an open app and the Start screen.

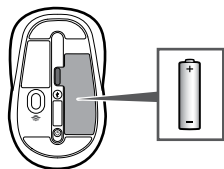
Customization

Windows 8: Press  + **W** on your keyboard (or swipe in from the right). Tap or click **Search**, then **Settings**, then enter **action center** in the Search box. In the Action Center, under Maintenance, then Device software, choose **Install**.

Windows 7: The Mouse and Keyboard Center app is available from the Start menu.

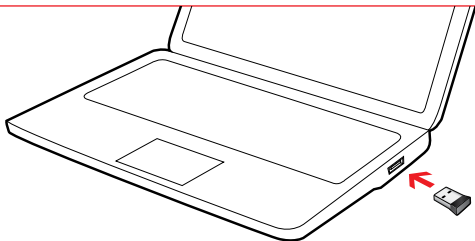
www.microsoft.com/hardware/downloads

1

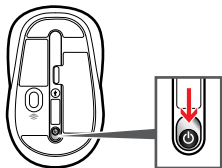


www.microsoft.com/hardware/productguide

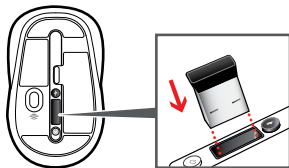
2



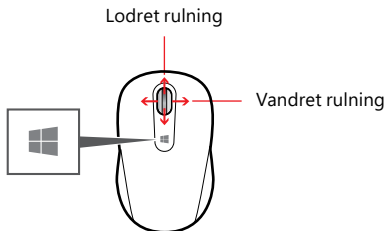
i1




i2




www.microsoft.com/hardware/support



Tryk på Windows-knappen  for at skifte mellem en åben app og startskærmen.

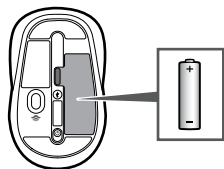
Tilpasning

Windows 8: Tryk på  + **W** på tastaturet (eller stryg ind fra højre). Tryk eller klik på **Søg**, derefter på **Indstillinger**, og angiv derefter **Løsningscenter** i søgefeltet. I Løsningscenter skal du vælge **Installér** under **Vedligeholdelse** og derefter **Enhedssoftware**.

Windows 7: Appen Mouse and Keyboard Center er tilgængelig via menuen Start.

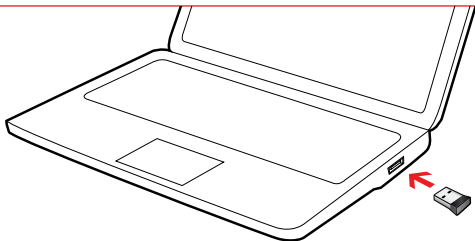
www.microsoft.com/hardware/downloads

1

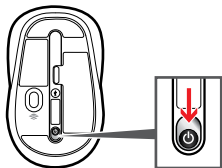


www.microsoft.com/hardware/productguide

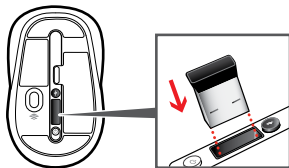
2



i1

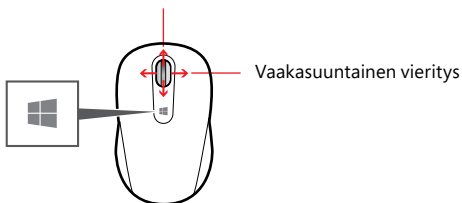



i2




www.microsoft.com/hardware/support

Pystysuuntainen vieritys



Voit siirtyä avoimen sovelluksen ja aloitusnäytön välillä napauttamalla Windows-painiketta .

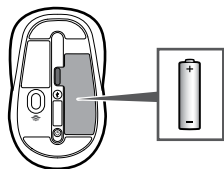
Asetusten muokkaaminen

Windows 8: Paina  -painiketta ja näppäimistön **W**-kirjainta (tai sipaise näytön oikeasta reunasta kohti keskustaa). Napauta tai napsauta **Hae > Asetukset** ja kirjoita sitten hakuruutuun **Toimintokeskus**. Valitse Toimintokeskuksen Ylläpito-kohdasta Laiteohjelmisto > **Asenna**.

Windows 7: Mouse and Keyboard Center -sovellus on käytettävissä Käynnistä-valikossa.

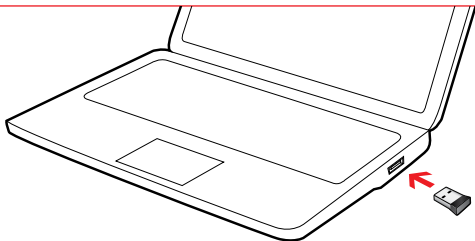
www.microsoft.com/hardware/downloads

1

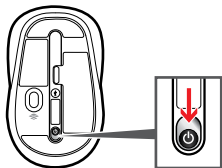


www.microsoft.com/hardware/productguide

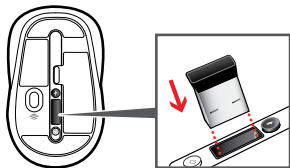
2



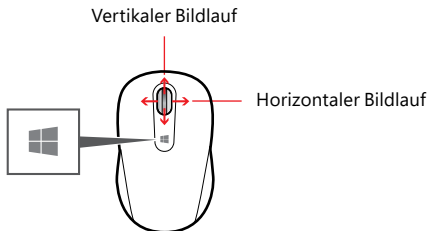
i1



i2




www.microsoft.com/hardware/support



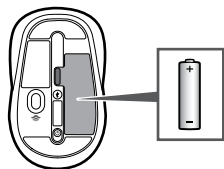
Tippen Sie auf die Windows-Taste , um zwischen einer offenen App und dem Startbildschirm zu wechseln.

Anpassung

Windows 8: Drücken Sie  + **W** auf Ihrer Tastatur (oder streifen Sie von rechts nach innen). Tippen oder klicken Sie auf „**Suche**“, dann auf „**Einstellungen**“, und geben Sie anschließend im Suchfeld „**Wartungcenter**“ ein. Wählen Sie im Wartungcenter die Option „**Wartung**“ und anschließend „**Gerätesoftware**“. Dann wählen Sie „**Installieren**“.

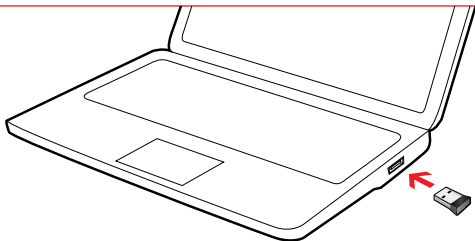
Windows 7: Die Maus- und Tastatur-Center-App ist im Startmenü verfügbar.
www.microsoft.com/hardware/downloads

1

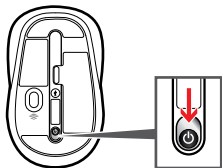


www.microsoft.com/hardware/productguide

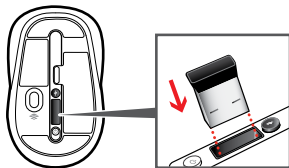
2



i1

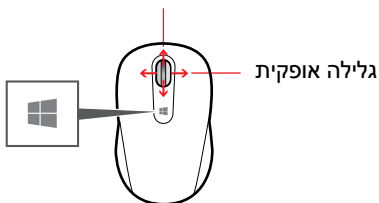


i2



www.microsoft.com/hardware/support

גלילה אנכית



הקש על לחצן Windows כדי לעבור בין אפליקציה פתוחה ומסך התחל.

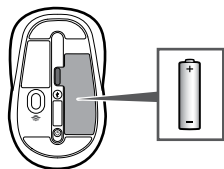
התאמה אישית

Windows 8: הקש **Windows** + W במקלדת (או החלק משמאל). הקש או לחץ על 'חיפוש', לאחר מכן על 'הגדרות' ולאחר מכן הזן 'מרכז הפעולות' בתיבת החיפוש. במרכז הפעולות, תחת 'תחזוקה' ולאחר מכן תחת 'תוכנת המכשירים', בחר 'התקנה'.

Windows 7: האפליקציה Mouse and Keyboard זמינה ממסך התחל.

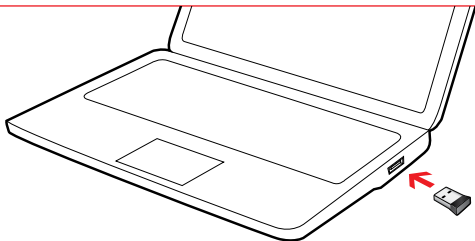
www.microsoft.com/hardware/downloads

1

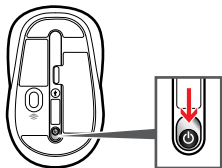


www.microsoft.com/hardware/productguide

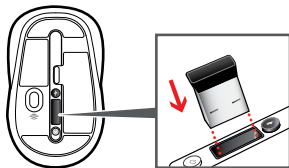
2



i1

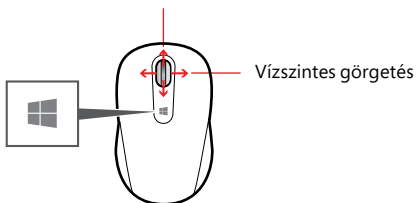



i2




www.microsoft.com/hardware/support

Függőleges görgetés



A megnyitott alkalmazás és a kezdőképernyő között a Windows gombra  koppintva válthat.

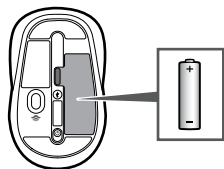
Testreszabás

Windows 8: Nyomja le a  + **W** billentyűkombinációt (vagy pöccintsen befelé a képernyő jobb széléről). Kattintson vagy koppintson a **Keresés** gombra, majd a **Beállítások** elemre, majd írja be a keresőmezőbe a műveletközpont szót. A Műveletközpontban a Karbantartás, majd az Eszközszoftver pont alatt válassza a **Telepítés** lehetőséget.

Windows 7: A Mouse and Keyboard Center vezérlőszoftver a Start menüből érhető el.

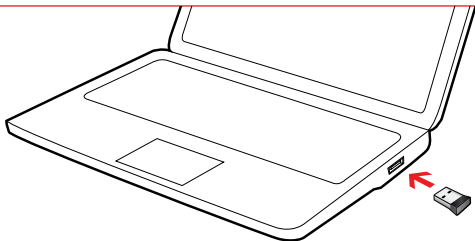
www.microsoft.com/hardware/downloads

1

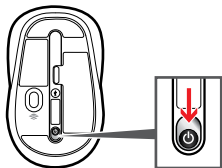


www.microsoft.com/hardware/productguide

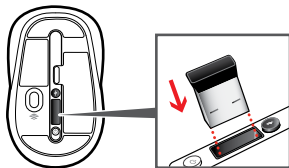
2



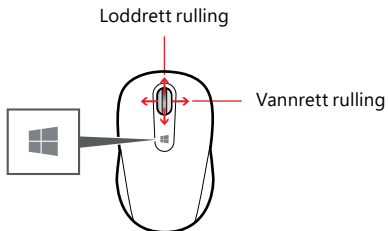
i1




i2




www.microsoft.com/hardware/support



Trykk Windows-knappen  for å veksle mellom en åpen app og startskjermen.

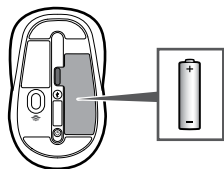
Tilpassing

Windows 8: Trykk  + **W** på tastaturet (eller sveip innover fra høyre). Trykk eller klikk **Søk**, deretter **Innstillinger**, og skriv inn handlingscenter i søkeboksen. Gå til Vedlikehold i **Handlingscenter**, deretter Enhetsprogramvare, og velg **Installer**.

Windows 7: Appen Microsofts mus- og tastatursenter er tilgjengelig fra Start-menyen.

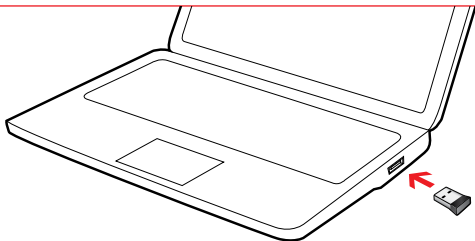
www.microsoft.com/hardware/downloads

1

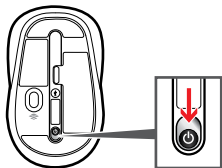


www.microsoft.com/hardware/productguide

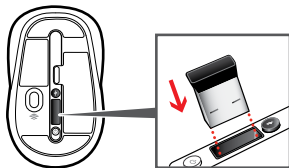
2



i1

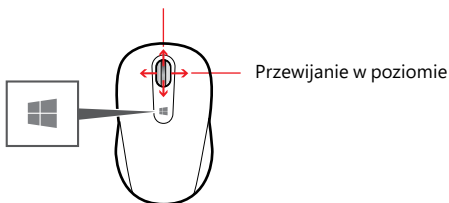



i2




www.microsoft.com/hardware/support

Przewijanie w pionie



Naciśnij przycisk Windows , aby przełączyć się między otwartą aplikacją a ekranem startowym.

Dostosowywanie

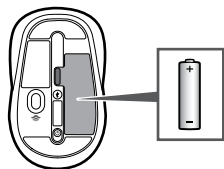
Windows 8: wciśnij jednocześnie klawisze  + **W** w polu wyszukiwania wpisz „ustawienia myszy”, wybierz „Ustawienia” poniżej, a następnie wybierz z aplikacji „Zmień ustawienia myszy”.

W celu pobrania najnowszego oprogramowania dla posiadanego produktu wejdź na stronę www.microsoft.com/hardware, wybierając następnie opcje „Pliki do pobrania”. Potem postępuj zgodnie z instrukcjami na stronie.

Windows 7: aplikacja Ustawienia Myszy i Klawiatury jest dostępna w menu Start.

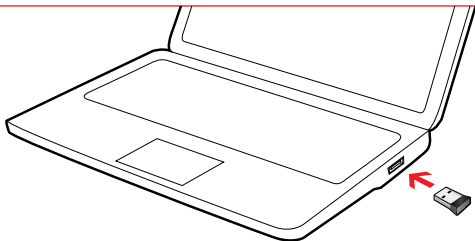
www.microsoft.com/hardware/downloads

1

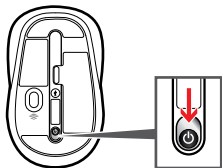


www.microsoft.com/hardware/productguide

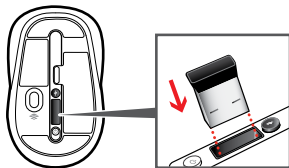
2



i1

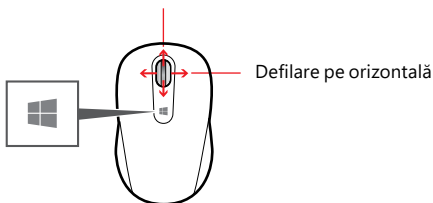



i2




www.microsoft.com/hardware/support

Defilare pe verticală



Atingeți butonul Windows  pentru a comuta între o aplicație deschisă și ecranul Start.

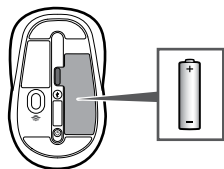
Particularizare

Windows 8: Apăsați  + **W** pe tastatură (sau trageți cu degetul de la dreapta). Atingeți sau faceți clic pe **Căutare**, apoi pe **Setări** și introduceți **centru de acțiune** în caseta de căutare. În Centrul de acțiune, sub **Întreținere**, apoi **Software pentru dispozitive**, alegeți **Instalare**.

Windows 7: Aplicația Mouse and Keyboard Center este disponibilă din meniul Start.

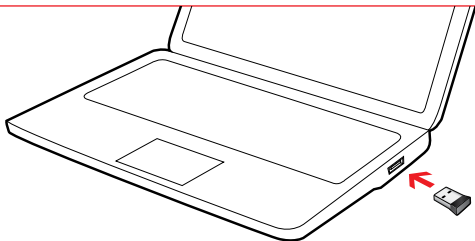
www.microsoft.com/hardware/downloads

1

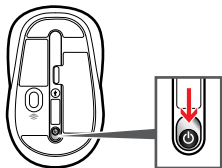


www.microsoft.com/hardware/productguide

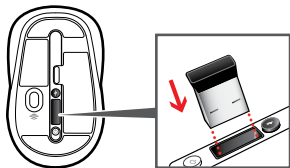
2



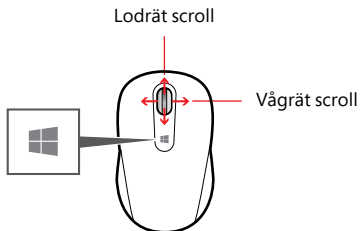
i1




i2




www.microsoft.com/hardware/support



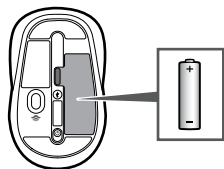
Tryck på Windows-tangenten  för att växla mellan ett öppet program och Startskärmen.

Anpassning

Windows 8: Tryck på  + **W** på tangentbordet (eller svep in från höger). Tryck eller klicka på **Sök**, **Inställningar** och skriv sedan **åtgärdscenter** i Sökrutan. Välj **Installera** i Åtgärdscentret under Underhåll, Enhetsprogramvara.

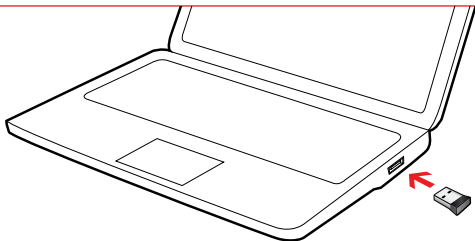
Windows 7: Programmet Mouse & Keyboard Center finns på Start-menyn.
www.microsoft.com/hardware/downloads

1

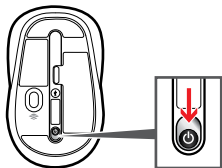


www.microsoft.com/hardware/productguide

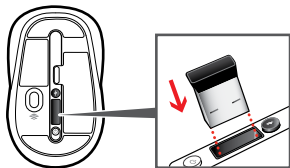
2



i1

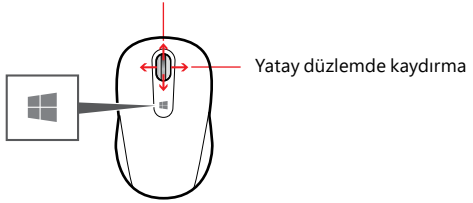



i2




www.microsoft.com/hardware/support

Dikey düzlemde kaydırma



Açık bir uygulamayla Başlangıç ekranı arasında geçiş yapmak için Windows düğmesine  dokununuz.

Özelleştirme

Windows 8: Klavyenizde  + **W** tuşlarına basın (veya parmağınızı sağdan kaydırın). **Ara**'ya, ardından **Ayarlar**'a dokununuz veya tıklattığınız ve Ara kutusuna **Eylem Merkezi** yazınız. Eylem Merkezi'nde, Bakım'ın altındaki Aygıt yazılımı'nda Yükle'yi seçiniz.

Windows 7: Fare ve Klavye Merkezi uygulamasına Başlat menüsünden ulaşılabilir.

www.microsoft.com/hardware/downloads



X18-80160-02
