






Introduction	Click Instructions	Talking Points
	<p>1.</p>	<p>Welcome to this guided lab on how to “Perform a Standardized Application Deployment to Test.”</p>
	<p>2.</p>	<p>This guided lab is the sixth in the Microsoft® Private Cloud series. It is recommended that the 14 labs in this series be taken in order, to best understand the experience and the benefits of working with the Microsoft Private Cloud.</p>

 <p>The diagram illustrates the Microsoft Private Cloud architecture. It shows a flow from 'Self-Service' (with a 'Get-Start' icon) through 'Service Models' to 'Service Delivery and Automation'. This central process is supported by 'Configure/Deploy' (using System Center and Windows Server) and 'Monitor/Operate'. The output is a stack of cloud types: Public Cloud, Private Cloud, and Virtual. A 'Click Here' callout points to the 'Service Delivery and Automation' section. The bottom bar includes 'APPLICATION MANAGEMENT', 'SERVICE DELIVERY AND AUTOMATION', and 'INFRASTRUCTURE MANAGEMENT'.</p>	<p>3.</p>	<p>By completing this series of labs, you will gain in-depth experience with the Microsoft Private Cloud and the products it comprises, including Microsoft System Center 2012 and Windows Server® 2008 R2 SP1.</p> <p>You will see how this new approach to computing delivers IT-as-a-Service, by providing:</p> <ul style="list-style-type: none">Application Management;Service Delivery and Automation; andInfrastructure Management.
---	-----------	--

Demo Script: Lab 6 - Perform Application Deployment

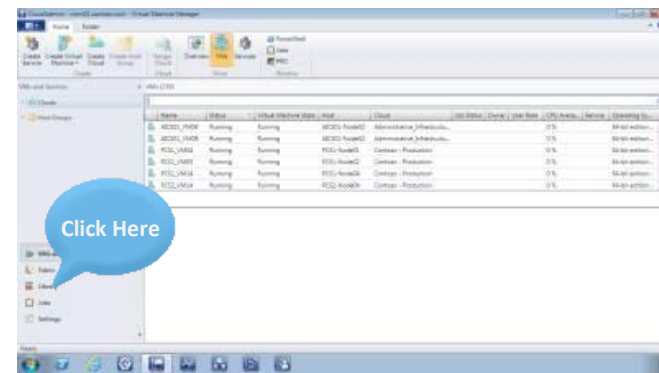
How to Navigate	Click Instructions	Talking Points
	1.	<p>To navigate this guided lab, either click the prompts indicated on the screen, or use your forward and back arrow keys to navigate through the steps.</p> <p>You can also access the control bar at the bottom of the screen for additional options.</p>
	2.	<p>To navigate this guided lab, either click the prompts indicated on the screen, or use your forward and back arrow keys to navigate through the steps.</p> <p>You can also access the control bar at the bottom of the screen for additional options.</p>

Demo Script: Lab 6 - Perform Application Deployment

Learning Objective	Click Instructions	Talking Points
<p>Learning Objective</p> <p>In this guided lab, you will learn how you can use Microsoft System Center 2012 – Virtual Machine Manager to prepare an application deployment by configuring a service template, and then initiate the deployment.</p> 	<ol style="list-style-type: none">1.	<p>In this guided lab, you will learn how you can use Microsoft System Center 2012 – Virtual Machine Manager to prepare an application deployment by configuring a service template, and then initiate the deployment.</p>

Demo Script: Lab 6 - Perform Application Deployment

Perform Standardized App Deployment to Test

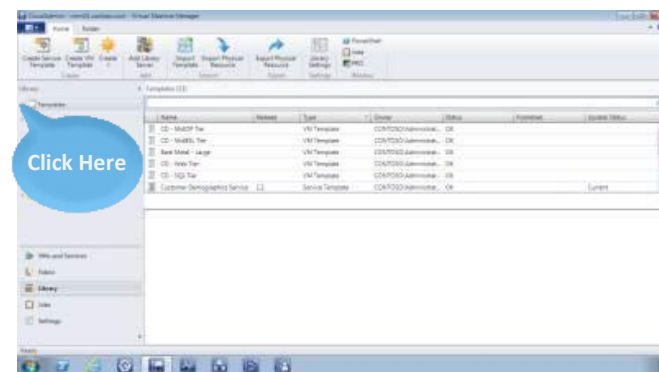


Click Instructions

1. Click **Library**.

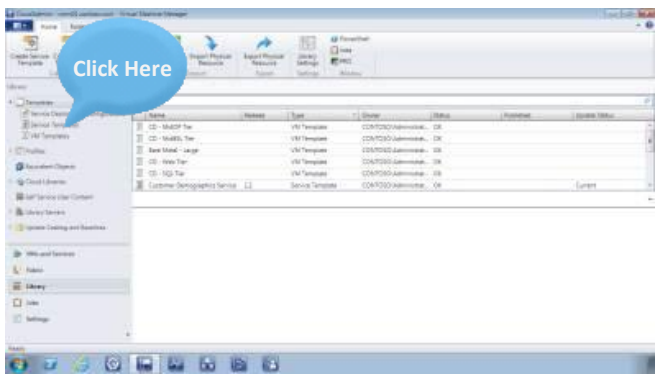
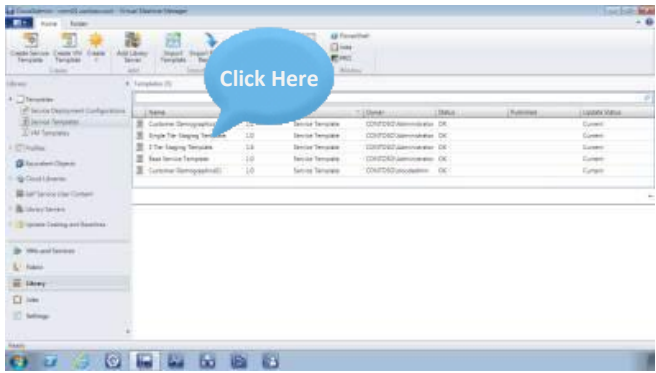
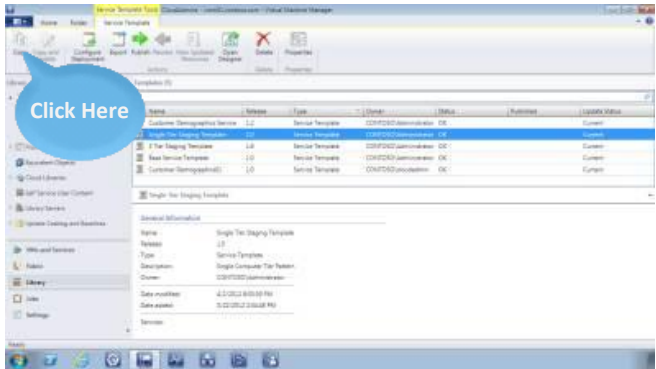
Talking Points

First, you will use Virtual Machine Manager to select a service template to configure. To get started, follow the prompts on the screen.

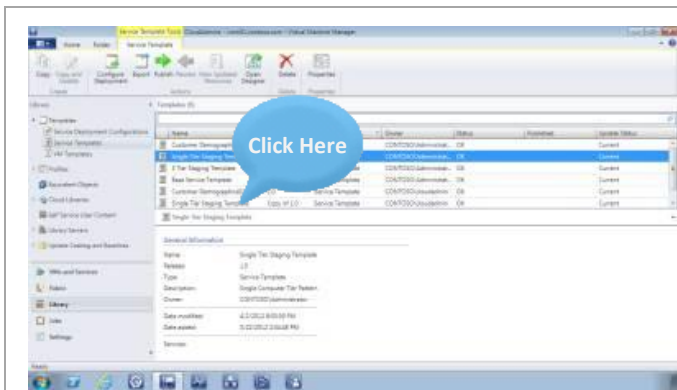


2. Expand **Templates**.

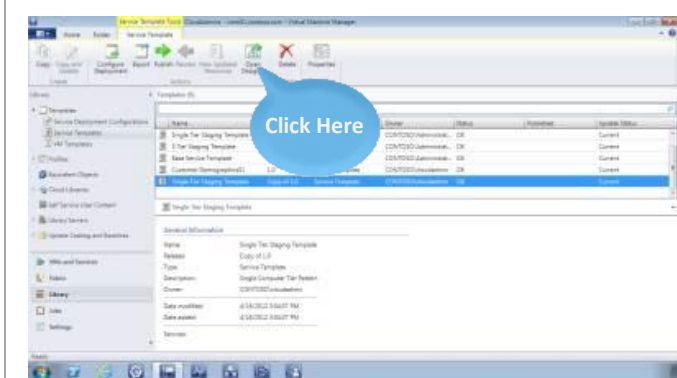
Demo Script: Lab 6 - Perform Application Deployment

	<p>3. Click Service Templates.</p>	
	<p>4. Click Single Tier Staging Template.</p>	
	<p>5. Click Copy.</p>	<p>Make a copy of the service template and rename it.</p>

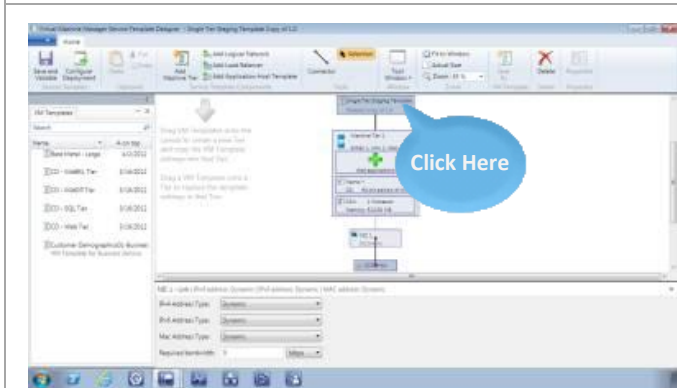
Demo Script: Lab 6 - Perform Application Deployment



6. Click **Single Tier Staging Template (Copy of 1.0)**.

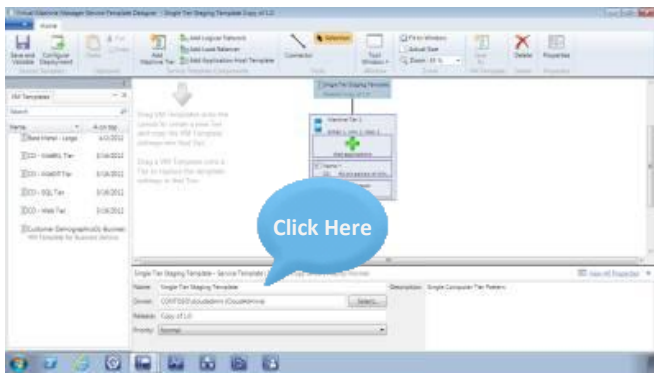
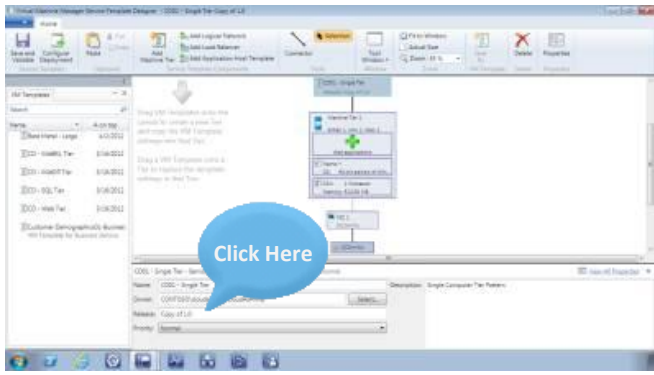



7. Click **Open Designer**.






8. Click the template.




Demo Script: Lab 6 - Perform Application Deployment

	<p>9. Click to enter a name.</p>	
	<p>10. Click to enter a release value.</p>	
	<p>11. Click Save and Validate.</p>	


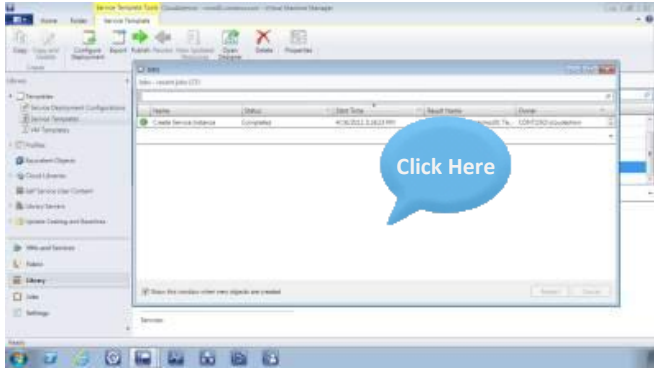
Demo Script: Lab 6 - Perform Application Deployment

	<p>12. Click Configure Deployment.</p>	<p>Next, you will configure the deployment settings for the service template, such as the name and destination of the new service instance.</p>
	<p>13. Click to enter a name.</p>	
	<p>14. Click the Destination drop-down.</p>	


Demo Script: Lab 6 - Perform Application Deployment

	<p>15. Select Contoso - Staging.</p>	
	<p>16. Click OK.</p>	
	<p>17. Click Deploy Service.</p>	<p>Use the Deploy Service console to review the deployment configuration settings. When you are ready, deploy the service.</p>

Demo Script: Lab 6 - Perform Application Deployment

	<p>18. Click Deploy.</p>	
	<p>19.</p>	<p>In this guided lab, you saw a brief example of how Microsoft System Center 2012 – Virtual Machine Manager lets you use service templates to configure consistently correct, repeatable deployments of applications.</p>

Demo Script: Lab 6 - Perform Application Deployment

Conclusion	Click Instructions	Talking Points
 <p>Series Progression</p> <p>1. Provision Resources Through Self-Service Requests 2. Create Consistent Service Delivery 3. Add Additional Infrastructure to Accommodate Resource Needs 4. Delegate Cloud Resources to Self-Service Properly Allocated 5. Create Consistency Through Service Templates 6. Perform a Standardized Application Deployment to Test 7. Stage Application Resources 8. Deploy an Application to a Production Environment 9. Gain Insights and Visibility Through Reporting 10. Monitor Health and Performance 11. Take Corrective Actions in the Event of Infrastructure 12. Perform Mean Time to Resolution with Alerts 13. Deploy an Update to a Service Instance 14. Monitor Existing Infrastructure</p> <p>APPLICATION MANAGEMENT SERVICE DELIVERY AND AUTOMATION INFRASTRUCTURE MANAGEMENT</p> <p>Click Here</p>	<p>1.</p>	<p>You have successfully completed the guided lab on how to “Perform a Standardized Application Deployment to Test.” We encourage you to progress to the next lab to further understand the experience and benefits of working with the Microsoft Private Cloud.</p>
 <p>Thank You for Completing This Guided Lab</p> <p>Complete a brief survey.</p> <p>Download Microsoft Private Cloud software here.</p> <p>Click Here</p>	<p>2.</p>	<p>Thank you for completing this guided lab. To complete a brief survey or download software, follow the links on your screen.</p>