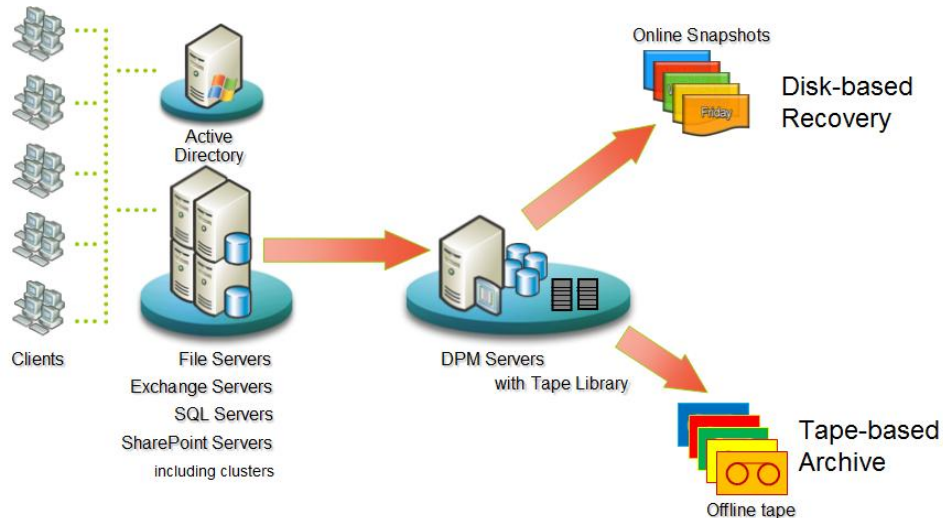


Data Protection Manager "v2" – beta download available

Data Protection Manager (DPM) v2 is the next generation of Microsoft's data protection product – and the backup/restore tool that administrators of Microsoft networks have been asking for. Customers have been looking for Microsoft to deliver a best of breed protection product for the core Windows Server workloads – and DPM v2 is coming to fulfill that demand.

DPM "v2" is the new standard for Windows backup and recovery -- delivering continuous data protection for Microsoft application and file servers to a seamlessly integrated secondary disk and tape solution on the DPM server. DPM enables better backups as well as rapid and reliable recoveries for both the IT professional and the end-user. DPM significantly reduces the costs and complexities associated with data protection through advanced technology for enterprises of all sizes.



DPM v2

- **Continuous Data Protection for Windows Application and File Servers** - DPM protects core Windows Server workloads by continuously capturing data changes with application-aware byte-level agents, providing an easy-to-manage and robust disk/tape back-end platform, and one-click lossless application recovery.
- **Rapid and Reliable Recovery** - DPM enables IT administrators & end-users to easily recover data in minutes from easily accessible disk instead of locating and restoring from less-reliable tapes.
- **Advanced Technology for Enterprises of all sizes** - DPM brings together the best aspects of CDP real-time protection with traditional tape backup/restore to provide a comprehensive disk-to-disk-to-tape data recovery solution. Combined with Microsoft's experience in Windows Server technology, DPM v2 provides a technically advanced and comprehensive data protection solution for the most demanding Windows environments – from the SMB to the Enterprise.

Microsoft delivered DPM 2006 in order to fill the need for a better "disk to disk" solution, on top of existing backup products. DPM v2 builds on that initial offering to deliver what our customers have asked for -- a superior recovery experience for the primary Windows Server workloads and to seamlessly integrate disk to disk with tape in a complete data protection solution from Microsoft.

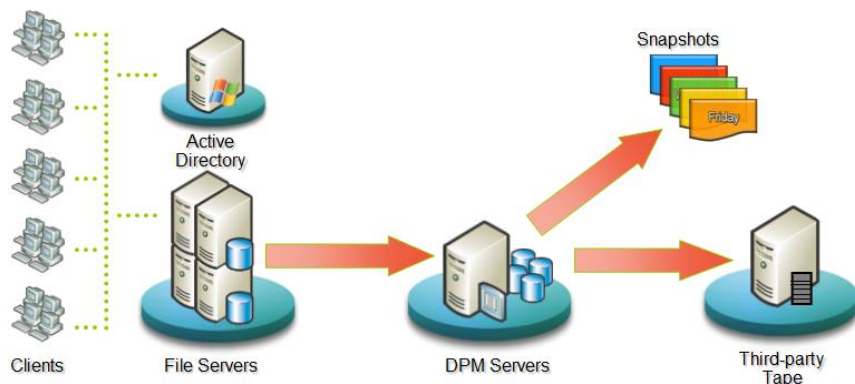
On September 27, 2006, Microsoft announced the first of two public betas for DPM v2. The second beta is expected in early spring 2007 with the product to complete later in the year. So, take a look at how DPM 2006 can solve real backup problems today – and get ready for DPM v2.

Download the beta for DPM v2 today!
www.microsoft.com/DPM

Data Protection Manager 2006 – shipping now

Data Protection Manager (DPM) is a key part of the Microsoft System Center family of management products, designed to help IT Pros manage their Windows servers. DPM shipped in October 2005 to provide better backups and a more reliable restore experience for Windows file servers.

DPM 2006 delivers centralized backup of branch offices and better backups within the data center, by continuously protecting changed files at the byte-level to secondary disk, which can then be backed up to tape. DPM also enables rapid and reliable recovery from easily accessible disk instead of waiting to locate and mount tapes. The result is increased operational efficiency by consolidating the backup efforts at the datacenter while empowering end-user initiated restores without additional IT effort.



DPM 2006

- **Centralized Backup of Branch Offices** - DPM delivers centralized backup of branch offices by continuously protecting changed data to secondary disk – instead of “nightly whole-file backups across the WAN.”
- **Rapid and Reliable Recovery** - DPM provides rapid and reliable recovery of data by restoring from easily accessible disk instead of having to locate and mount tape media.
- **Operational Simplicity and empowers End User Restore without additional IT effort**– DPM lowers the total cost of your data protection environment by improving the efficiency of your operations

“Last night’s tape” is not acceptable for most environments – resulting in a half-day of data loss and up to a full-day of downtime. Microsoft has addressed this need by providing hourly synchronizations and multiple points-in-time shadow copies per day to the DPM server – while still letting our customers continue to use the nightly and long-term tape solution that they currently have an investment in.

Customers have also lamented that end-user restore requests are a major burden to IT teams, but that existing end-user recovery tools are cumbersome – forcing users to learn a new application or non-intuitive web-page. In response to this need, Microsoft enables end-users to restore their own data from the applications that they already are familiar with and rely on – Windows Explorer or any Microsoft Office 2003 (or later) application.

Where to go for more information

www.microsoft.com/DPM

Contact information

DPMinfo@microsoft.com

© 2006 Microsoft Corporation. All rights reserved. This data sheet is for informational purposes only. MICROSOFT MAKES NO WARRANTIES, EXPRESS OR IMPLIED, IN THIS SUMMARY. Microsoft, Windows, Windows NT, and the Windows logo are either registered trademarks or trademarks of Microsoft Corporation in the United States and/or other countries. Microsoft Corporation · One Microsoft Way · Redmond, WA 98052-6399 · USA