



Upgrading to R2?

Add DPM for a comprehensive backup and recovery solution that can protect your existing Windows 2000 and 2003 Servers – as well as your new R2 platforms.

Announcing: Data Protection *AND* Availability

Every server needs reliable backup. With System Center Data Protection Manager and Microsoft® Windows Server™ 2003 R2, you'll get faster restores *without IT intervention* – while increasing the availability of your company-wide files. Depending on what your protection goals are, both technologies are designed to protect your data in different and complementary ways:

Microsoft System Center Data Protection Manager

For fast and reliable restores without slow tape technology – or IT intervention.

Microsoft Windows Server 2003 R2

For higher availability of users' data – and assured user productivity.

When you *combine the two*, you'll have a *comprehensive data storage and recovery solution* that lets you increase availability and failover via Windows Server 2003 R2, while centralizing your backup and protection of branch office servers with Data Protection Manager.

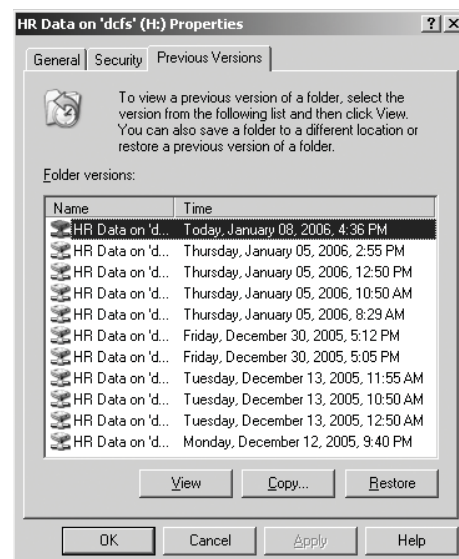
Microsoft System Center Data Protection Manager

GET PROTECTED... and save time with end-user restore – without IT intervention.

Data Protection Manager (DPM) is the platinum standard for disk-based backup and recovery of Windows® file servers. It delivers rapid and reliable recovery of data lost because of user error or server hardware failure – as well as near continuous data protection and operational simplicity.

Fast restores that take seconds – and supplement your long-term strategies. DPM is supported by most tape backup software vendors. That means you will get fast disk-based restores of recent data, with no change to your long-term tape-based data protection and retention strategies.

Centralized backup of branch offices – and backup enhancement within your data center – via continuous protection of changed files to an alternative disk, which you can then back up to tape.



Time and resource-saving user-based restore.
97 percent of all "restores" are single files, causing huge burdens on IT resources – and lost productivity while users wait. With DPM, users simply right-click on a file or directory and choose which previous version they want to pull up – without IT intervention.

Is your branch office data vulnerable? Gartner estimates that 60 percent of corporate data exists outside of the traditional data center. If that's true for you, then you're risking permanent loss of over half your data – with immeasurable amounts of productivity lost while workers recreate their lost documents.

Is your current backup model too risky, time-consuming, and costly? Whole file backups across a WAN aren't realistic. Tape is slower than disk – for both backups and restores. And when branch offices don't have dedicated IT personnel, their backups and restores often fail because of personnel or training issues.

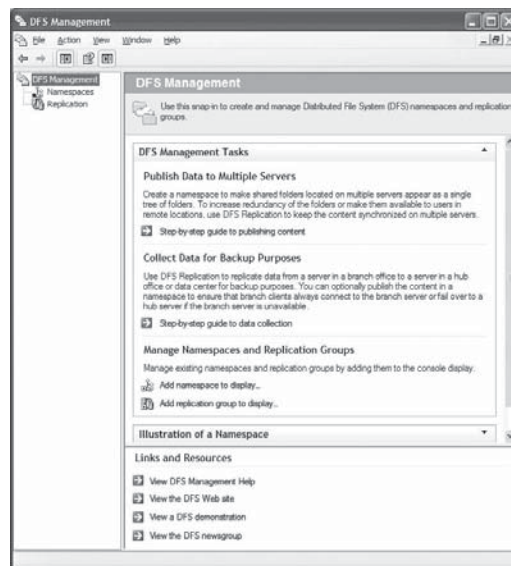
Microsoft Window Server 2003 R2

STAY PRODUCTIVE... with efficient data transmission and synchronization.

Two new technologies in Windows Server 2003 R2 include DFS-Replication and DFS-Namespaces. This advanced failover protection lets you synchronize branch office files with copies at your data center – or vice versa.

Aggressively minimize bandwidth during transmission. DFS-Replication is an efficient, robust, and scalable replication engine that uses Remote Differential Compression (RDC) – one of the most efficient differential data compression technologies available. RDC and Cross File RDC also reduce redundant data replication over expensive WAN links.

Transparent redirection between branch office and data center copies of files is made possible with a unique network-wide naming system.



Windows Server 2003 R2 provides DFS for a robust multi-master file replication and name-redirection system that is simple to deploy, configure, and maintain.

The result? Users can be assured of access to their data, whether it is the local copy at the branch or the redundant copy at the data center – and your company stays productive.

Working Together to Help Make Your Data Safe and Available

	DFS Replication in R2	Data Protection Manager
Delivery	In Windows OS	Application
Primary Solution	Availability of file shares	Centralized backup & fast restore
Platform Support	Windows Server 2003 R2 only	Windows 2000, 2003 & R2
Data Frequency	Every 15 minutes	Up to hourly – plus past iterations
Data Granularity	Byte-level differences	Whatever application writes (bytes or whole file)

Microsoft is dedicated to helping our customers solve their data protection and availability needs. For more information on these new solutions – and a FREE evaluation copy – go to <http://www.microsoft.com/dpm>