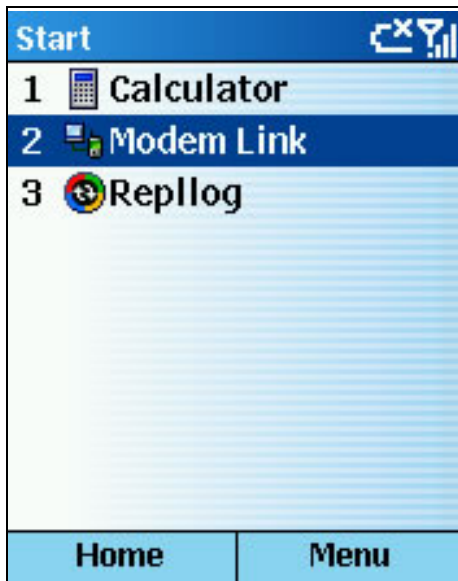


Connections

Use Data Connections settings to create dial-up, Virtual Private Network (VPN), and proxy connections so that you can connect to the Internet or your corporate network. By using a data connection, you can browse the Web, download e-mail, chat by using MSN® Messenger, or synchronize remotely with an Exchange Server.

Modems:

How to activate the modem link



1. On the Home screen, click Start > Accessories > Modem Link.



2. Click Menu, and then click Activate.



3. Click Done.

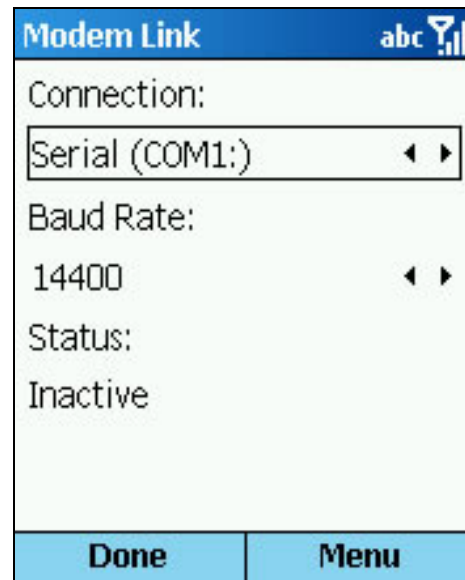
Modems:

How to set up a serial port modem connection

Make sure that your Smartphone is not connected to another device.



1. On the Home screen, click Start > Accessories > Modem Link.



2. In Connection, click Serial (COM1).



3. Click Menu, and then click Activate.



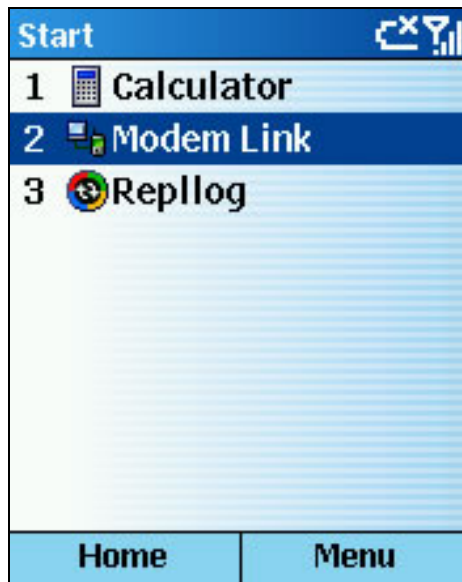
4. Click Done.

Note: The default baud rate is set for 115,200. Do not change this default unless the port speed of the Smartphone or computer requires you to do so.

Modems:

How to set up an infrared or USB modem connection

Make sure that your Smartphone is not connected to another device.



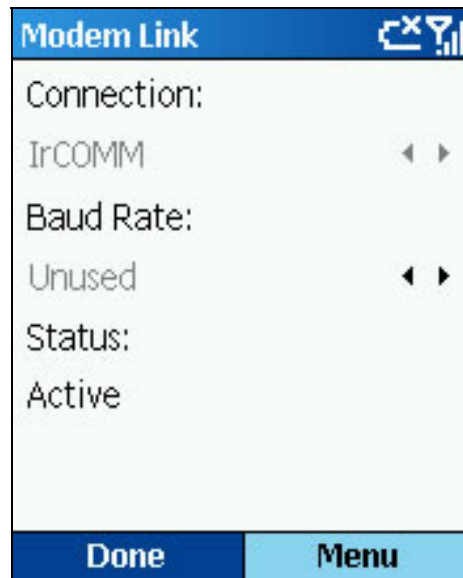
1. On the Home screen, click Start > Accessories > Modem Link.



2. In Connection, choose USB or IrCOMM.



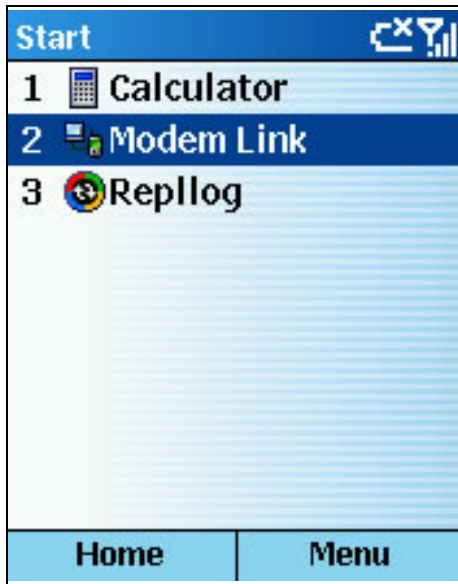
3. Click Menu, and then click Activate.



4. Click Done.

Modems:

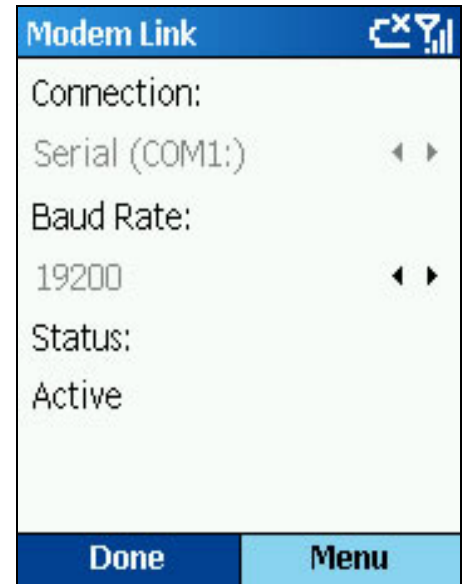
How to deactivate the modem link



1. On the Home screen, click Start > Accessories > Modem Link.



2. Click Menu, and then click Deactivate.



3. Click Done.

Note: Failing to deactivate the modem link when you are finished using it might result in problems with using ActiveSync in the same session.