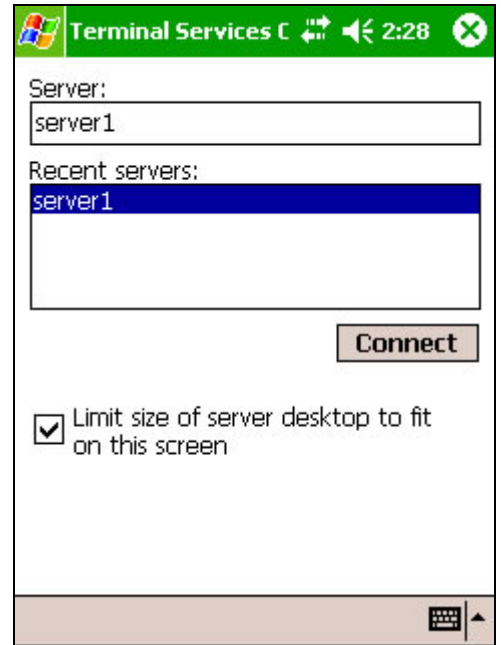
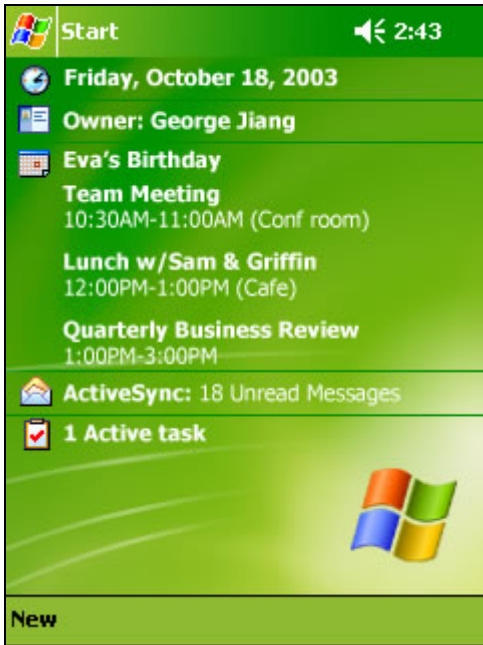


Terminal Services Client

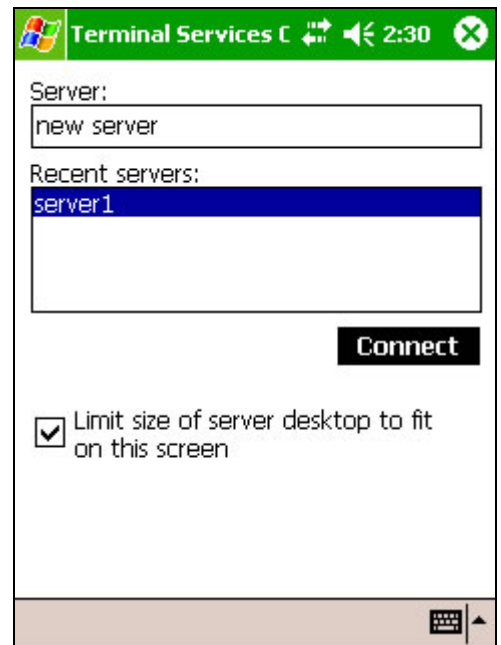
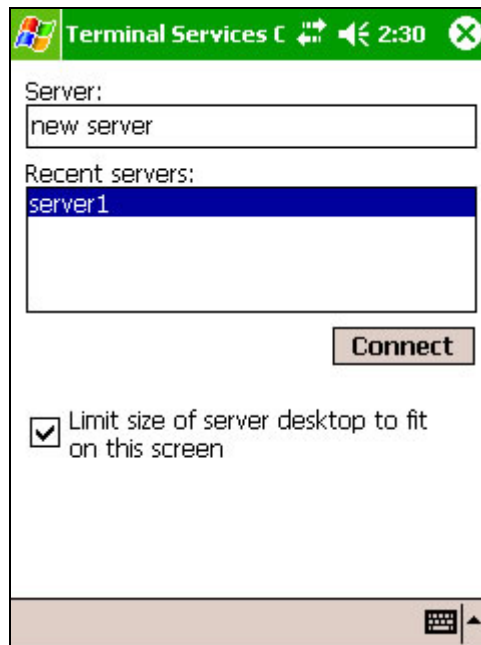
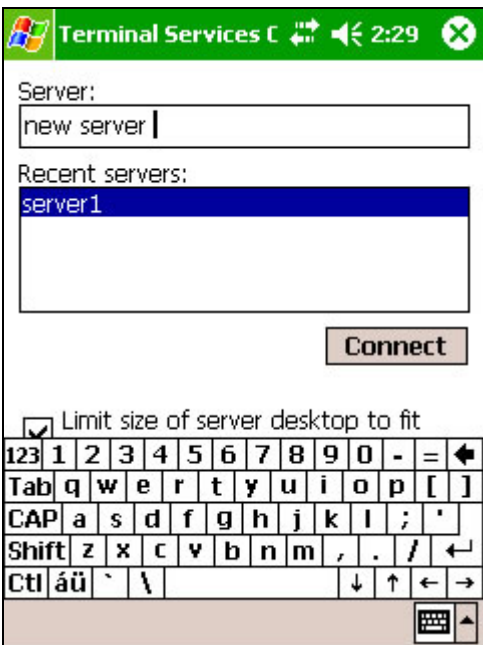
Connect to a Terminal Server



1. Start a remote connection to the server via a modem or network (Ethernet) card.

2. Tap Start > Programs > Terminal Services Client.

3. To connect to a server you have previously connected to, in Recent Servers, tap a server.



4. To connect to a new server, enter the server's name in the Server box.

5. Select the Limit size of server desktop to fit on this screen check box only when using applications that have been specifically sized for use with Pocket PC.

6. Tap Connect.