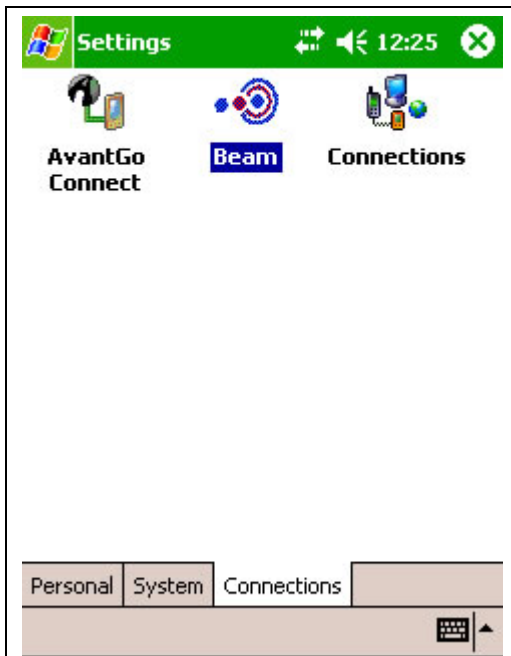


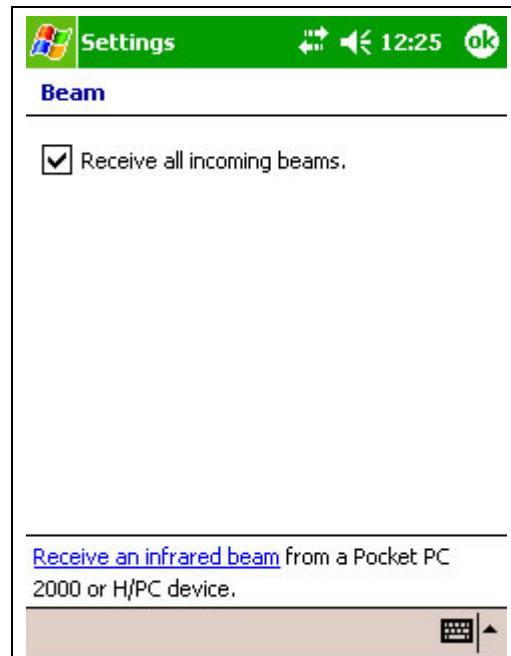
Infrared Beaming

Using Infrared Beaming:

Change Beam Settings



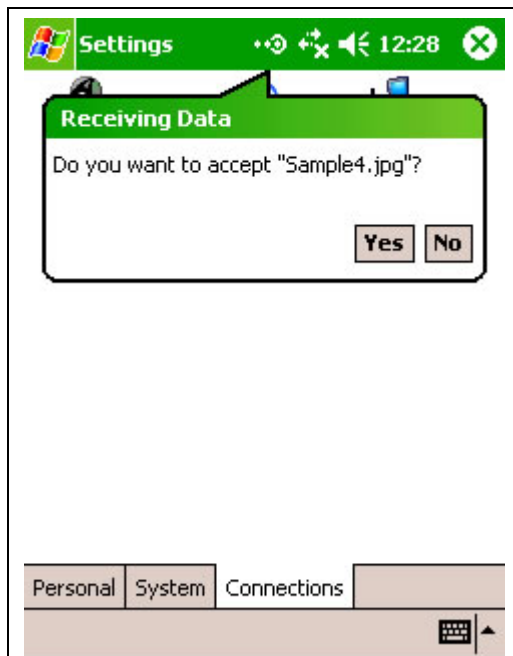
1. Tap Start > Settings > Connections tab > Beam.



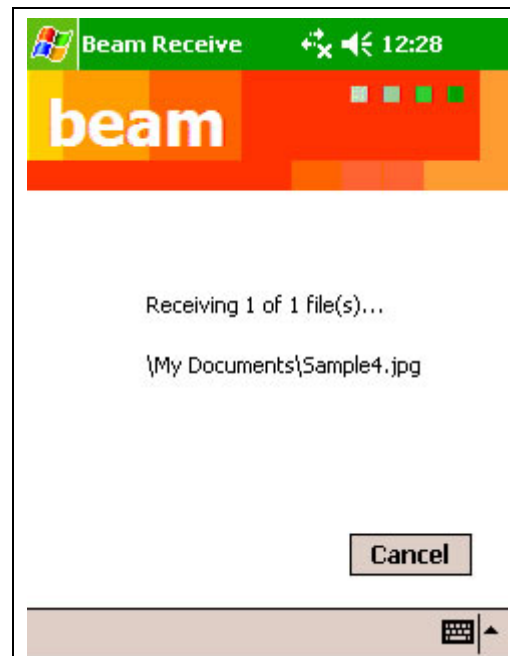
2. By default your device detects incoming infrared (IR) and Bluetooth beams and prompts you to accept them. If you do not want your device to detect or receive beams, clear the Receive all incoming beams check box. By default your device detects incoming infrared (IR) and Bluetooth beams and prompts you to accept them. If you do not want your device to detect or receive beams, clear the Receive all incoming beams check box.

Using Infrared Beaming:

Receive a Beam



1. If someone attempts to send you an IR beam, you will be prompted to accept it. If someone attempts to send you an IR beam, you will be prompted to accept it.

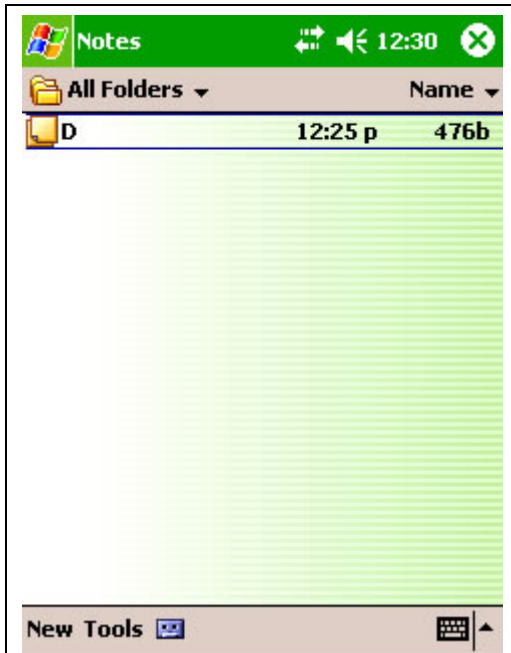


2. If someone attempts to send you a beam from an older device, you may not be prompted to accept it. Before the beam is sent from the other device, tap Start > Settings > Connections tab > Beam then tap "Receive an infrared beam" at the bottom of the Beam screen.

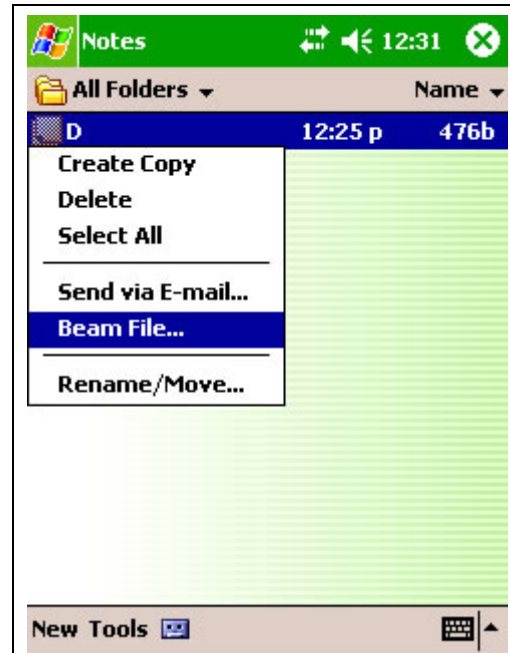
Using Infrared Beaming:

Beam an item to another device

These instruction steps apply to Calendar, Contacts, Tasks, File Explorer, Pocket Word and Pocket Excel. As an example, we look at the Notes application.



1. Tap Start > Programs > Notes



2. Tap and hold the file you wish to beam. On the pop-up menu, tap Beam File.

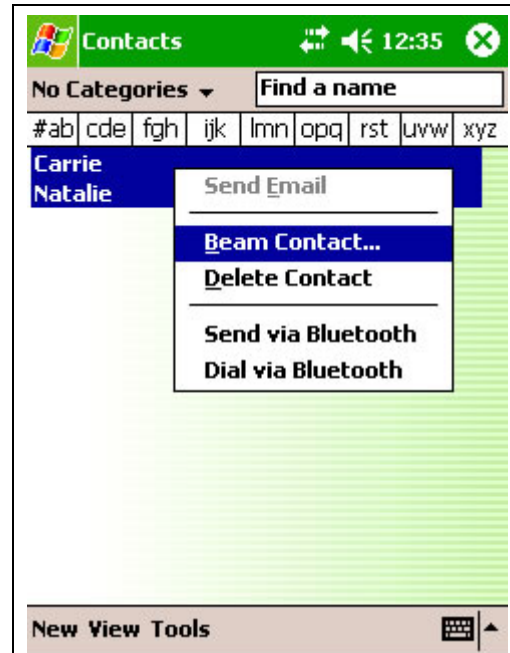
Note: Immediately your device will try to discover an available Infrared port on a nearby device. Make sure the IR ports are properly aligned with no objects blocking the path.

Using Infrared Beaming:

Beam a contact



1. Tap Start > Contacts



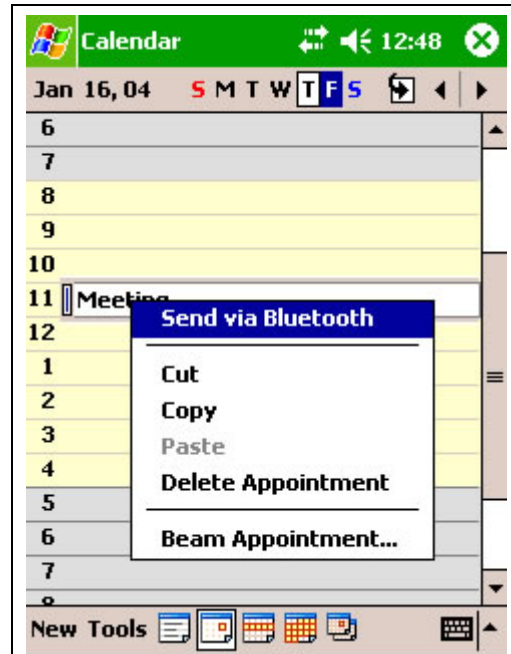
2. To beam a contact, in the contact list, tap and hold the contact. To beam multiple contacts, tap and drag to select the contacts. On the pop-up menu, tap Beam Contact.

Using Infrared Beaming:

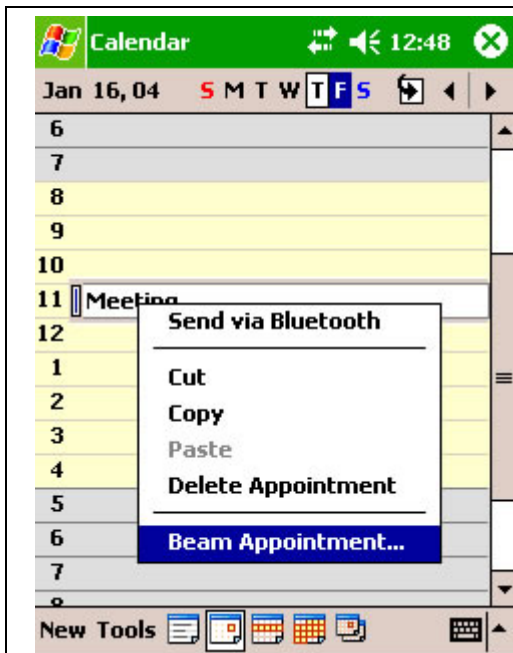
Beam an appointment



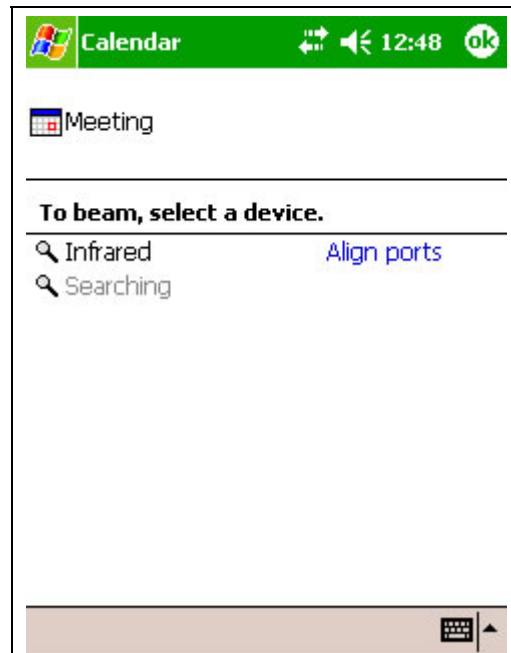
1. Tap Start > Calendar



2. To beam an appointment, in the calendar list, tap and hold the appointment.



3. On the pop-up menu, tap Beam Appointment.



4. When using infrared (IR), align the IR ports according to the instructions in your owner's manual so that they are unobstructed and within a close range.