



## Monitor and Manage Your Unix and Linux Servers

Ensuring Server Health & Performance with Microsoft® System Center Operations Manager 2007 Cross Platform Extensions Beta

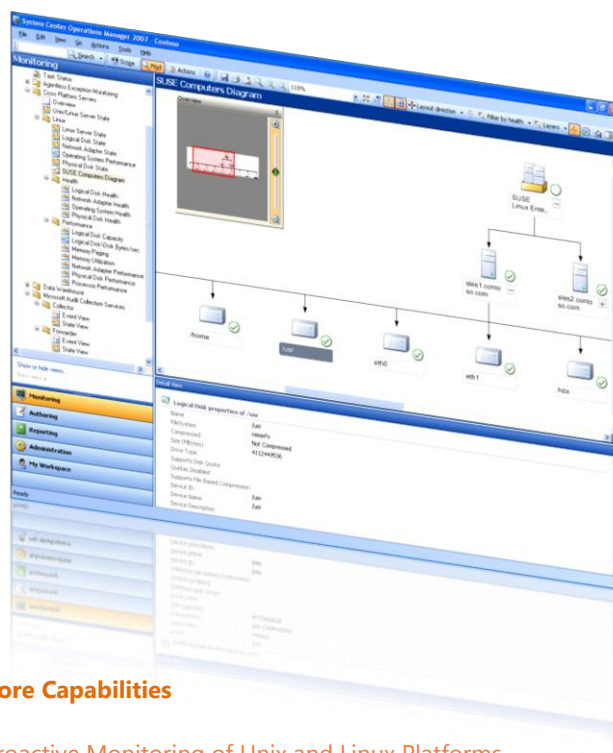
Organizations of all sizes need end-to-end visibility into the health and performance of their IT infrastructure to ensure optimal performance, business continuity, and achievement of service level requirements. Often this infrastructure is comprised of a complex mix of different operating platforms – making management and monitoring difficult. The myriad of tools and utilities many organizations use to assess the health and performance of their heterogeneous environments only exacerbates the management challenge.

Microsoft System Center Operations Manager 2007 delivers a unified monitoring and management solution that provides best-of-breed, end-to-end monitoring and management of your Microsoft-based systems and applications. With Microsoft System Center Operations Manager 2007 Cross Platform Extensions Beta (Ops Mgr Cross Plat), organizations can now extend the best-of-breed monitoring capabilities of Operations Manager 2007 to the HP-UX®, Sun Solaris™, Red Hat® Enterprise Linux®, Novell SUSE® Linux Enterprise Server, and IBM AIX 5L® V5.3, Technology Level 6, SP5 (PowerPC) server environments.

With Microsoft System Center Operations Manager 2007 Cross Platform Extensions, organizations are empowered to monitor and manage their cross-platform environments including Microsoft, Unix, and Linux—all from a unified, centralized management console.

### Benefits

- Improves service levels and visibility with end-to-end management of Microsoft, Unix and Linux platforms
- Enables administrators to more easily identify and resolve issues in a cross-platform environment
- Accelerates incident resolution through expert knowledge of server issues and potential causes
- Improves management efficiency with consolidated, cross-platform performance analysis and reporting
- Reduces IT management complexity by automating routine administration for non-Microsoft platforms
- Leverages open source solutions and open standards to ensure the greatest possible interoperability and extensibility



### Core Capabilities

#### Proactive Monitoring of Unix and Linux Platforms

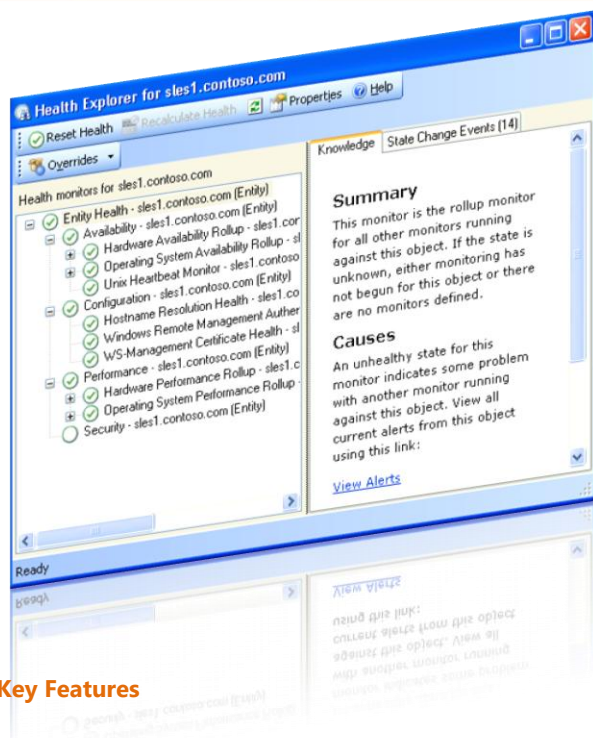
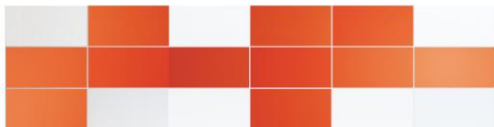
Operations Manager 2007 with Operations Manager Cross Platform Extensions enable you to quickly validate that your entire IT infrastructure across Microsoft, Unix, and Linux platforms is available and performing as expected. Ops Mgr Cross Plat helps you prevent unplanned outages, avoid performance degradation, and accelerate the time it takes to diagnose problems on non-Microsoft systems. Any incident or anomaly is quickly identified, investigated, and resolved, improving your overall service levels.

#### Single, Centralized Monitoring

Efficiency can be dramatically improved by using one single monitoring tool across Microsoft, Unix, and Linux platforms. Health and performance data is automatically aggregated across environments to present one clear picture of performance and availability, speeding resolution times for issues and ensuring required service levels.

#### Increased Efficiency and Control

Ops Mgr Cross Plat automates routine and redundant tasks, and provides intelligent reporting and monitoring that reduces the level of manual effort that traditional monitoring approaches require.



## Key Features

### Keep Systems Up and Running

Monitors the health of key system attributes, including:

- File systems and network interfaces
- Critical processes (e.g., syslog, cron, and others)
- Key configurations (e.g., resolution of hostname, correct configuration of Web Services Management components)
- Core system attributes (e.g., assure health of system memory and processors)

### Proactively Avoid Space and Memory Issues

Delivers detailed monitoring of physical and logical disk space, swap space, and system memory for non-Microsoft platforms.

### Monitor System & Application Performance

Helps administrators check for applications or processes that may be causing excessive loads on system resources and degrading performance using:

- Real-time views of key performance attributes
- Detailed reports that identify trends from historical data

## Monitored Environments

The Operations Manager 2007 Cross Platform Extensions Beta supports monitoring of the following operating systems:

- HP-UX 11iv3 (PA-RISC and IA64)
- Sun Solaris 10 (SPARC and x86)
- Red Hat Enterprise Linux 5 Server
- Novell SUSE Linux Enterprise Server 10 SP1
- IBM AIX 5L V5.3, Technology Level 6, SP5 (PowerPC)

## System Requirements

For System Center Operations Manager 2007 Cross Platform Extensions Beta:

- Microsoft System Center Operations Manager 2007 Service Pack 1 (SP1) (32-bit only)  
(See <http://technet.microsoft.com/en-us/library/bb309428.aspx> for Operations Manager 2007 Supported Configurations)
- Windows Remote Management (WinRM) 1.1

For monitored Unix/Linux systems:

- OpenSSL, libxml2 and zlib  
(See Operations Manager 2007 Cross Platform Extensions Setup Guide for details on library versions by operating system)

## Resources and Further Information

### System Center Operations Manager 2007

For the latest information on System Center Operations Manager 2007, visit <http://www.microsoft.com/systemcenter/opsmgr>

### Download Operations Manager 2007 trial and beta software

- To download an evaluation of Operations Manager 2007 SP1, visit <http://technet.microsoft.com/en-us/bb738014.aspx>
- To download the Operations Manager 2007 Cross Platform Extensions Beta, visit Microsoft Connect at <https://connect.microsoft.com/programdetails.aspx?ProgramDetailsID=2249>

### System Center Pack Catalog

The catalog contains the latest Management Packs and Connectors for System Center Operations Manager 2007 and other System Center products (where applicable)  
<http://www.microsoft.com/technet/prodtechnol/scp/catalog.aspx>

© 2008 Microsoft Corporation. All rights reserved. The information contained in this document relates to pre-release software product, which may be substantially modified before its first commercial release. Accordingly, the information may not accurately describe or reflect the software product when first commercially released. Because Microsoft must respond to changing market conditions, it should not be interpreted to be a commitment on the part of Microsoft, and Microsoft cannot guarantee the accuracy of any information presented after the date of publication. This document is provided for informational purposes only, and Microsoft makes no warranties, express or implied, with respect to this document or the information contained in it.

Microsoft, Active Directory, Windows, the Windows logo, and Windows Server System are either registered trademarks or trademarks of Microsoft Corporation in the United States and/or other countries.

All other trademarks are property of their respective owners.

Microsoft®  
**System Center**

Knowledge-Driven IT Management