

Microsoft Operations Management Suite

Simplified IT management for any enterprise

Gain control over any hybrid cloud. Manage Microsoft Azure or Amazon Web Services (AWS), Windows Server or Linux, VMware or OpenStack—all with Microsoft Operations Management Suite (OMS), our cost-effective, all-in-one cloud IT management solution.

Better control over hybrid cloud

The rapid pace of innovation in IT today presents challenges for traditional management. Hybrid infrastructure, heterogeneous environments, and agile development all require a new way of thinking about management solutions. To meet the needs of a competitive and accelerating business, you need a single view across the hybrid cloud, reducing the need for multiple tools and interfaces. You need to get up and running rapidly, without spending valuable time on integration. And to plan effectively and maximize efficiency you need deep analytics that allow you to identify issues and maximize performance. The right management solution makes you faster, more agile, and more efficient in delivering on business requirements.

Microsoft OMS is the IT management solution for the hybrid cloud. Used alone or to extend your existing System Center deployment, OMS gives you the maximum flexibility and control for cloud-based management of your infrastructure. With OMS, you can manage any instance in any cloud, including on-premises, Azure, AWS, Windows Server, Linux, VMware, and OpenStack, at a lower cost than competitive solutions. Built for the cloud-first world, OMS offers a new approach to managing your enterprise that is the fastest, most cost-effective way to meet new business challenges and accommodate new workloads, applications and cloud environments. Microsoft OMS delivers:

- **Simplicity:** A single portal for all your management tasks. No infrastructure to maintain.
- **Time to value:** Onboard fast. No content to create. Connects to your on-premises datacenter.
- **Easy to integrate:** Add new servers, or connect to your existing management tools within minutes.
- **Hybrid and open:** Manage workloads across Windows and Linux, hybrid and public clouds, Azure and AWS.
- **Optimized for System Center:** Complements your System Center investment to unleash new management scenarios.

Transforming IT agility

Deep insight into every aspect of the infrastructure gives IT the opportunity to increase efficiency and take action to drive performance. Taking advantage of the flexibility of cloud deployment, OMS offers log analytic capabilities that enable you to collect and analyze machine data from virtually any source. Using data generated across devices, operating systems, workloads and user actions, OMS provides instant

Key Capabilities

Provides enterprise-class, real-time **operational intelligence across hybrid environments.**

Simplifies cloud management with process automation and monitoring of resources.

Better ensures preparedness in the event of a disaster with **cloud-based availability.**

Protects privacy and security of data, while delivering software and services to manage the IT infrastructure.



access to critical information through one integrated console. You can troubleshoot across multiple data sources and easily identify the root cause of operational and security issues.

Armed with increased visibility and insights about your environment, you can take better informed actions. With a large distributed and dynamic environment, it is time consuming and error-prone to conduct configuration and remediation tasks manually against thousands of nodes and instances. OMS automation capabilities enable you to automate all those frequent, time-consuming, and error-prone cloud management tasks with precision and scale. Further, with its simple and reliable cloud integrated backup and recovery solutions, OMS can protect important applications and workloads, no matter where they reside.

Extending your System Center investments

As System Center continues to drive faster time to value, OMS extends System Center's capabilities to deliver a full hybrid management experience for any workloads across any datacenter or cloud. OMS enhances your System Center investments through many new and enhanced scenarios including:

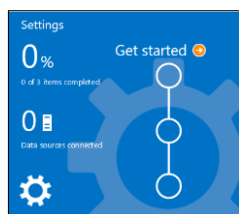
Operational Visibility and Management	Security
Proactive smart alerts	Security log collection
Comprehensive operations dashboards and reporting	Breach and threat detection
Real-time and customizable monitoring with dashboards	In-depth forensic analysis
Performance Monitoring and Analytics	Malware detection and software update status
OS resources monitoring for Windows Server and Linux	Log Management
On-premises server performance monitoring	Universal log collection and analysis
Azure server performance monitoring	Unlimited data retention
SAN storage analytics	Adding structure to all types of unstructured data
Capacity Planning	Real-time monitoring, search and log analytics
Forecasting resource utilization trends	Dashboards powered by search queries
Virtual machine placement optimization	Third party and community based intelligence packs
Investigating 'what-if' scenarios and pinpoint shortages	Automation
Storage bottlenecks identification	VM provisioning
Configuration and Change Tracking	Application Deployment
Detecting potential configuration issues	Runbook Gallery
Identifying deviations from best practices	Graphical Designer
Monitoring software, Windows services, registry keys	Site Recovery
Tracking group policies and file changes	Automated protection and replication of VMs
Backup	Customizable recovery plans
Support for application, server and data backups	Supporting replication & recovery of physical/virtual machines
Including geo-replication capabilities	Orchestrated recovery

Onboarding Steps

Microsoft Operations Management Suite (OMS) enables you to onboard in minutes.

Sign up in 3 clicks

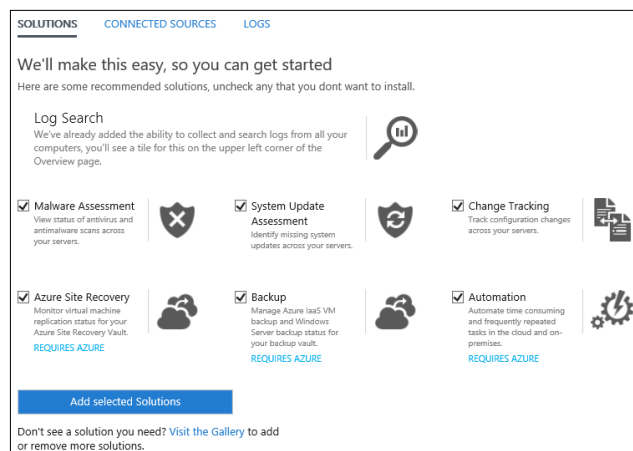
1. Navigate to <http://microsoft.com/oms> and click the **'Try for free'** button. Sign in with your **'Microsoft account'** such as Outlook.com, or with an **'Organizational account'** provided by your company or educational institution to use with Office 365 or other Microsoft services.
2. Provide a unique **'Workspace Name'**. A workspace is a logical container where your management data is stored. It provides you a way to partition data between different teams in your organization, as the data is exclusive to its workspace. Specify an **'Email'** address and the **'Region'** where you would like to have your data reside.
3. Next, you can create a new Azure subscription or link to an existing Azure subscription. If you would like to proceed using the **Free Trial**, click the **'Not Now'** button.



Getting started with the OMS portal

To choose solutions and connect the servers you intend to manage, click on the blue **'Get Started'** tile and follow the steps below:

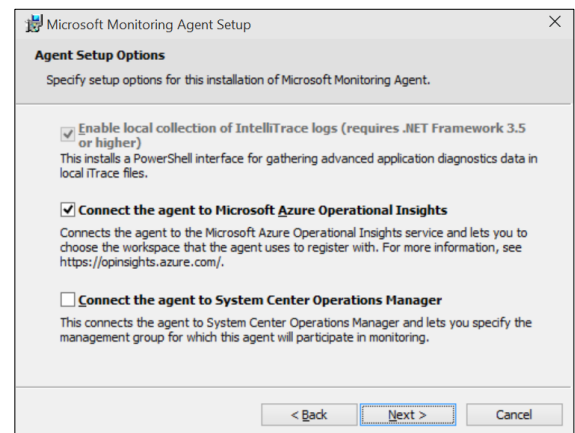
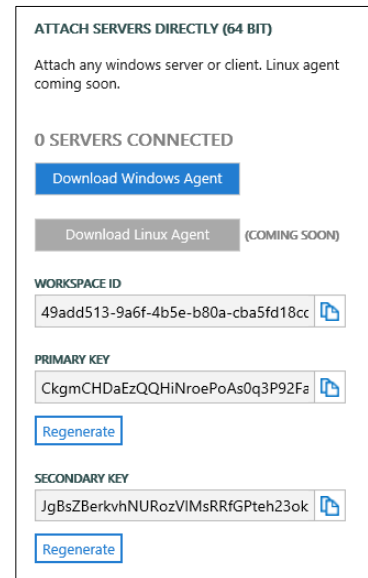
- Select the solutions you would like to use and click the **'Add selected Solutions'** button.
- Choose how you would like to connect to your environment:
 - a. Connect any Windows Server or client directly by installing an agent.
 - b. Use System Center Operations Manager to attach your management groups or your entire Operations Manager deployment.
 - c. Use an Azure storage account configured with the Windows or Linux Azure diagnostic VM extension.
- Finally, configure at least one log to populate your data. You can select the IIS logs and/or add event logs and select save at the bottom of the page. For event logs you can specify the type of messages (error / warning / information) to monitor.



Steps to connect servers directly to OMS by installing an agent

- In the 'Get Started' view click the 'Connect a data source' node and click the 'Download Windows Agent' button. The agent can only be installed on Windows Server 2008 SP 1 or above or Windows 7 SP1 or above. Servers need to be x64 architecture.
- Install the agent on one or more servers. You can install agents, one by one in-bulk using a custom [script](#) or your existing software distribution solution.
- After agreeing to the license agreement and choosing your install folder, select the 'Connect the agent to Microsoft Azure Operational Insights' checkbox.
- In the next screen you will be asked for your Operational Insights workspace ID and workspace key. Your workspace ID and key can be found in the screen where you download the agent file.
- In the installer screen you can click the 'Advanced' button to optionally setup your proxy server and provide authentication information. Click the 'Next' button to return to the workspace information screen.
- Click the 'Next' button to validate your workspace ID and key. If any errors are found, you can click the 'Back' button to make corrections. Once your workspace ID and key are validated, click 'Install' to complete the agent installation.
- Log back onto your OMS portal, and click the 'Server & Usage' tile on the overview page. A green check mark icon will appear once the agents communicate with the service (initially this takes 5-10 min).

Note: The capacity management and configuration assessment solutions are not currently supported by servers connected directly to OMS.



OMS also enables you to connect to your System Center 2012 Operations Manager (SCOM) SP1 and R2 environments, sending data to the service without requiring additional hardware or load on your management groups. This supports the use of existing Operations Manager agents directly.

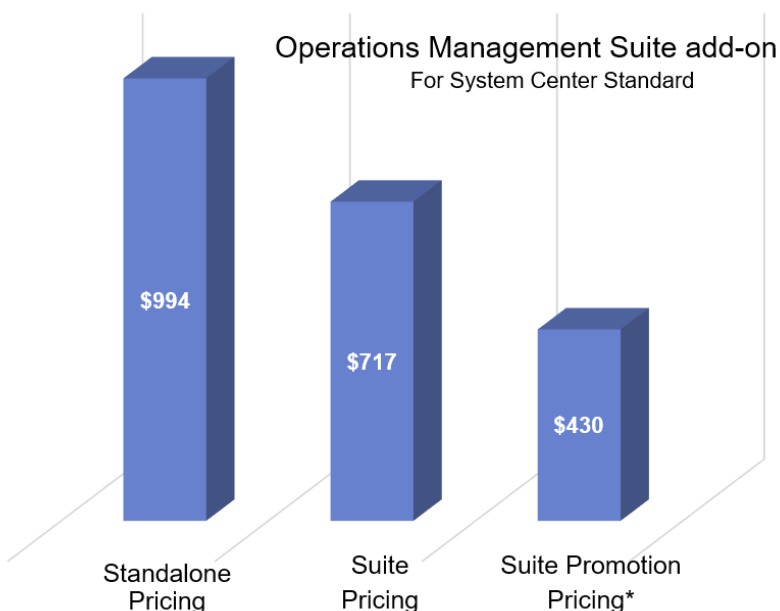
Steps to connect using System Center Operations Manager

- In the Operations Manager console, select **Administration**.
- Expand the **Operational Insights** node and select **Operational Insights Connection**.
- Click the **Register to Operational Insights** link towards the top right and follow the onscreen instructions.
- After completing the registration wizard, click **Add a Computer/Group** link.
- In the **Computer Search** dialog box you can search for computers or groups monitored by Operations Manager. Select computers or groups to onboard to Operational Insights, click **Add**, and then click **OK**. You can confirm that the service is receiving data by going to 'Server & Usage' tile in the OMS portal. Data should appear in 5-10 min.

Analyze data from cloud services in Microsoft Azure

With OMS you can quickly search event and IIS logs for cloud services and virtual machines by enabling diagnostics for Azure Cloud Services. You can also receive additional insights for your Azure virtual machines by installing the Microsoft Monitoring Agent. Details on how to configure your Azure environment to leverage OMS can be found [here](#).

Operations Management Suite add-on pricing



Using System Center today? Take advantage of the Microsoft Operations Management Suite add-on coming in July 2015.

Get access to all the new services OMS offers, with a convenient step-up price for all existing System Center customers. For every **System Center Standard** or **Datacenter** license you own, you will be able to purchase a corresponding Microsoft Operations Management Suite add-on. For additional details click [here](#).

* Promotion pricing is an introductory offer through December 31, 2015, includes site recovery to Azure.

Standalone pricing

Log Analytics, provided by Operational Insights, is offered in three tiers: free, standard and premium. The standard and premium tiers do not have a limit on the amount of data collected daily.

For additional Operational Insights pricing details click [here](#).

Operational Insights	Free	Standard	Premium
Price	Free	\$2.30/GB	\$3.50/GB
Daily Limit	500 MB	None	None
Retention Period	7 days	1 month	12 months

Backup pricing is dependent on size of each protected instance.

Backup (Data Stored Per Protected Instance Per Month)	Price
Instances up to 50GB of data	\$5 per protected instance + Storage consumed
Instances between 50GB to 500GB of data	\$10 per protected instance + Storage consumed
Instances greater than 500GB of data	Increments of \$10 for each 500GB + Storage consumed

For additional Backup pricing details click [here](#).

Site Recovery is billed based on number of instances protected. Every protected instance is free for the first 31 days.

Site Recovery	Price For First 31 days	Price After 31 Days
Azure Site Recovery to customer owned sites	Free	\$16/month per instance protected
Azure Site Recovery to Azure	Free	\$54/month per instance protected

For additional Site Recovery pricing details click [here](#).

Automation is available in free and basic tiers. Automation billing is based on the number of job run time minutes used in the month.

For additional Automation pricing details click [here](#).

Automation	Free	Basic
Price per month	Free	\$0.002 / minute
Job Run Time	500 minutes	Unlimited