

SharePoint Development for .NET Developers

About This Course

- ◆ Description
- ◆ Objectives
- ◆ Audience

Prerequisites

- ◆ At least six month's experience developing solutions on the .NET platform
- ◆ Proficiency in either Visual Basic.NET or Visual C# (or both)

Course Outline

- ◆ Module 1: Developing Solutions on the SharePoint Platform
- ◆ Module 2: Web Parts
- ◆ Module 3: Page Navigation
- ◆ Module 4: Page Branding
- ◆ Module 5: Data Lists
- ◆ Module 6: Web Services
- ◆ Module 7: Event Handlers
- ◆ Module 8: Content Types
- ◆ Module 9: Workflow
- ◆ Module 10: User Management
- ◆ Module 11: Silverlight
- ◆ Module 12: Deployment



Module 1: Developing Solutions on the SharePoint Platform



Overview

- ◆ SharePoint as a Development Platform
- ◆ SharePoint Tools and Technologies for Developers
- ◆ Comparing MOSS 2007 to WSS 3.0

Lesson 1: SharePoint as a Development Platform

- ◆ SharePoint: A Collaborative Platform
- ◆ Why Develop Solutions on the SharePoint Platform?
- ◆ Leveraging Collaborative Features as a Developer
- ◆ Using your .NET Skills on the SharePoint Platform
- ◆ Technology Stack: .NET, Windows SharePoint Services 3.0, and Microsoft Office SharePoint Server 2007
- ◆ Leveraging ASP.NET Provider Framework
- ◆ SharePoint Object Models
- ◆ SharePoint Web Services

SharePoint: A Collaborative Platform

- ◆ WSS provides many different types of collaborative features
 - Data Lists
 - Tasks, Issues, Discussions, Contacts, Calendars, Surveys, Custom Lists
 - Document Management
 - Storage
 - Check-in/ Check-out
 - Version Control
 - Workflows

Why Develop Solutions on the SharePoint Platform?

- ◆ Many functional requirements are already met
 - Data storage
 - Document management
 - User interfaces
 - Administrative interfaces
 - Search
- ◆ Complex non-functional requirements are already met
 - Security
 - Scalability
 - Manageability
 - Flexibility
 - Maintainability
 - Performance

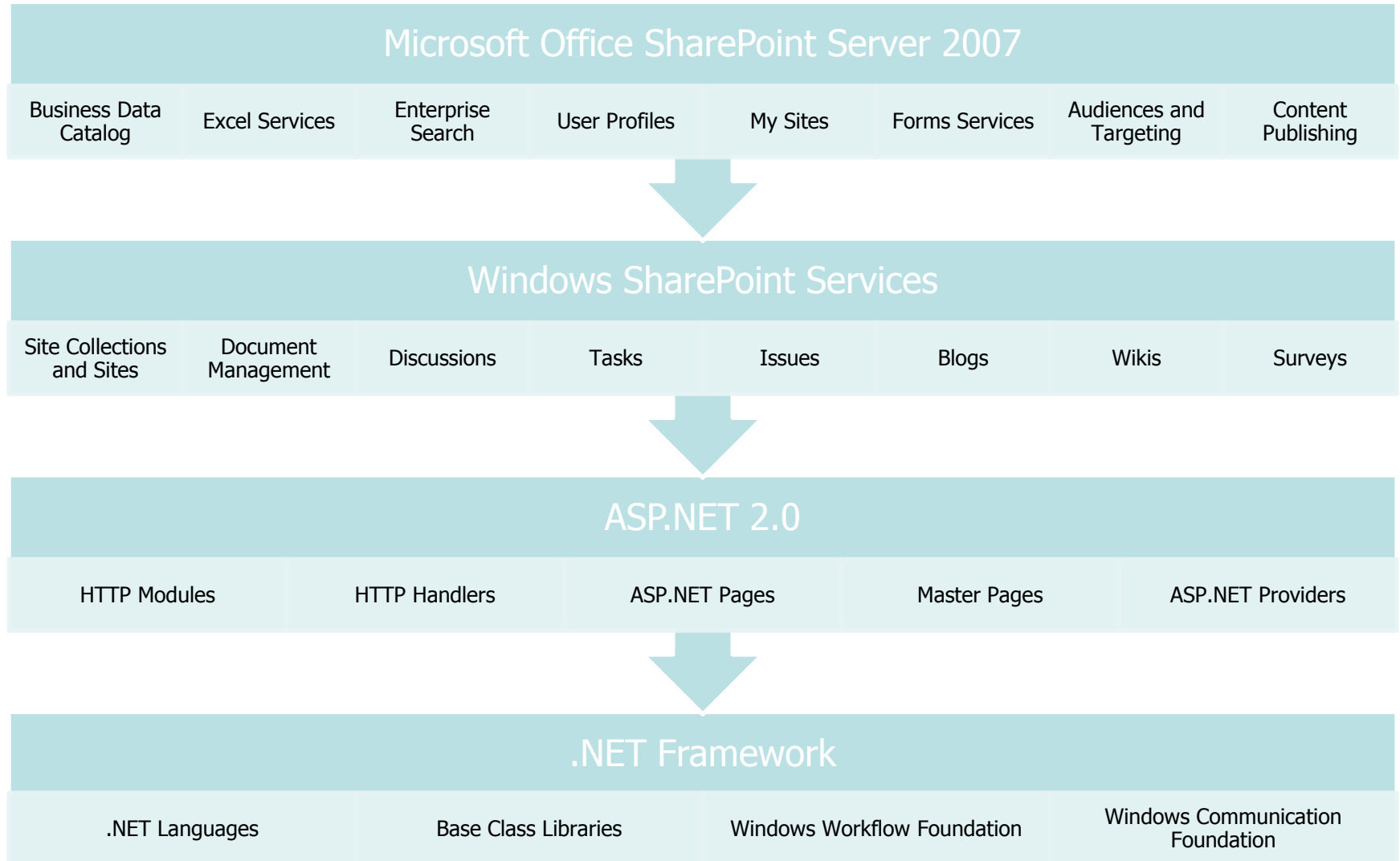
Leveraging Collaborative Features as a Developer

- ◆ Extend the built-in data model
 - Customize built-in lists
 - Create new custom lists
- ◆ Create custom user interfaces to support your specific business processes
 - Web Parts
 - Administrative pages
- ◆ Consume SharePoint data from non-SharePoint applications via Web services
 - ASP.NET Web applications
 - Windows forms applications

Using your .NET Skills on the SharePoint Platform

- ◆ Coding in the context of SharePoint gives you full access to the .NET Framework
 - Just like in an ASP.NET Web application
- ◆ Also gives you access to SharePoint class libraries
 - Used just like .NET Framework base class libraries
- ◆ Coding typically done in Visual Studio
 - Project templates for SharePoint solutions

Technology Stack: .NET, WSS 3.0, and MOSS 2007



Leveraging ASP.NET Provider Framework

- ◆ Themes
- ◆ Profiles
- ◆ Personalization
- ◆ Membership
- ◆ SiteMap
- ◆ Session State
- ◆ OLEDB Connections

SharePoint Object Models

Windows SharePoint Services 3.0	Microsoft® Office SharePoint® Server 2007
Microsoft.SharePoint.dll	Microsoft.Office.Server.dll
	Microsoft.Office.Server.Publishing.dll
	Microsoft.Office.Server.Policy.dll
	Microsoft.Office.Server.Search.dll
	Microsoft.SharePoint.Portal.dll
	Microsoft.Office.Workflow.Tasks.dll
	Microsoft.SharePoint.Publishing.dll
	Microsoft.SharePoint.Workflow.Actions.dll

SharePoint Web Services

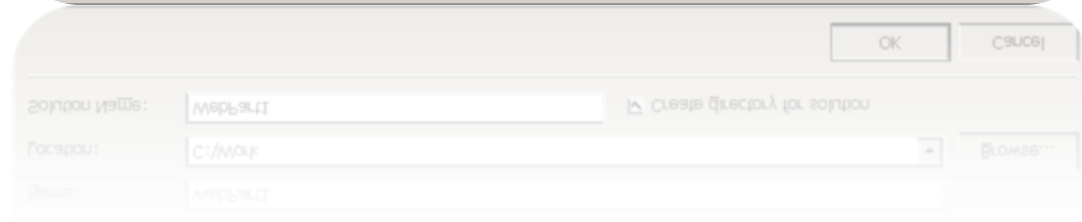
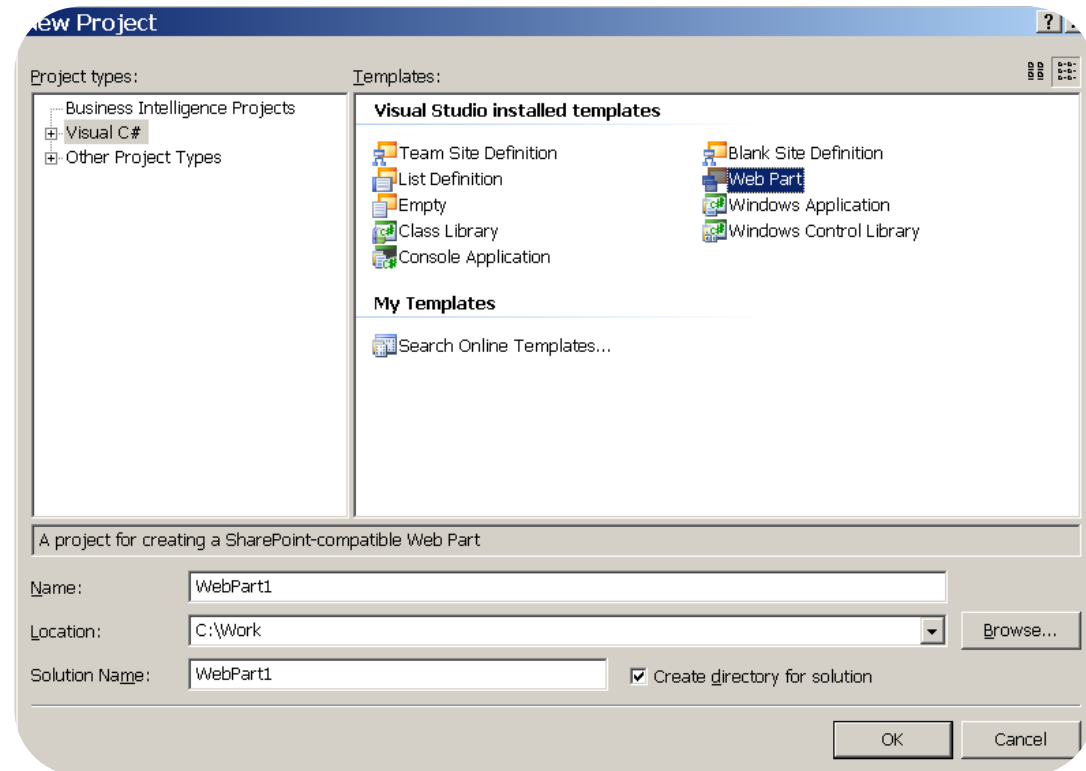
- ◆ Administration Service (admin.asmx)
- ◆ Alerts Service (alerts.asmx)
- ◆ Copy Service (copy.asmx)
- ◆ Document Workspace Service (dws.asmx)
- ◆ Forms Service (forms.asmx)
- ◆ Imaging Service (imaging.asmx)
- ◆ List Data Retrieval Service (dspsts.asmx)
- ◆ Lists Service (lists.asmx)
- ◆ Meetings Service (meetings.asmx)
- ◆ People Service (People.asmx)
- ◆ Permissions Service (permissions.asmx)
- ◆ Site Data Service (sitedata.asmx)
- ◆ Site Service (sites.asmx)
- ◆ Search Service (spsearch.asmx)
- ◆ Users and Groups Services (usergroup.asmx)
- ◆ Versions Service (versions.asmx)
- ◆ Views Service (views.asmx)
- ◆ Web Part Pages Service (webpartpages.asmx)
- ◆ Webs Service (webs.asmx)

Lesson 2: SharePoint Tools and Technologies for Developers

- ◆ Getting Started – Visual Studio 2008 Templates for SharePoint Development
- ◆ Web Applications, Site Collections and Sites
- ◆ Web Parts and Web Part Pages
- ◆ Application Pages and the _layouts folder

Getting Started – Visual Studio 2008 Templates for SharePoint Development

- ◆ Microsoft Visual Studio 2005 extended with Visual Studio Extensions for Windows SharePoint Services 3.0 (1.1)
- ◆ Visual Studio 2008 with Visual Studio Extensions for Windows SharePoint Services 3.0



Web Applications, Site Collections and Sites

- ◆ SharePoint IIS Web Applications exposed via **SPWebApplication** object
 - Major unit controlled by Web.config settings
 - Consumes providers such as authentication, SiteMap, membership, profiles, and so on
 - Contains one or more Site Collections
- ◆ Site Collections exposed via **SPSite** object
 - Unit that defines security boundaries
 - Contains one or more sites
- ◆ Sites exposed via **SPWeb** object
 - Unit that defines storage
 - Pages, Document Libraries, Lists

Web Parts and Web Part Pages

- ◆ WSS 3.0 supports two types of Web Parts
 - WSS 2.0-type Web Parts
 - Mainly for backwards compatibility
 - ASP.NET 2.0-type Web Parts
 - Most common type for new solutions
- ◆ WSS 3.0 Web Part Pages
 - Built on ASP.NET 2.0 Web Part Pages
 - Includes SPWebPartManager control and SPWebPartZone controls
 - Stored in content databases, rather than on the file system

Application Pages and the _layouts folder

- ◆ All WSS Web applications include a virtual directory mapping
 - _layouts → ...\\12\\Templates\\Layouts
- ◆ Contains ASPX pages in the file system
 - Administrative pages
- ◆ You can create your own
- ◆ You can modify existing files
 - Look and feel
 - Additional links and functionality

Changes affect **all** WSS Web applications on the server

Lesson 3: Comparing MOSS 2007 to WSS 3.0

- ◆ What is Microsoft Office SharePoint Server 2007 from a Developer's Perspective?
- ◆ Business Data Catalog
- ◆ Excel Services
- ◆ User Profiles
- ◆ Enterprise Search
- ◆ Audiences and Targeting

What is Microsoft Office SharePoint Server 2007 from a Developer's Perspective?

- ◆ MOSS is a WSS 'Application'
 - Good example of building on the WSS platform
- ◆ Adds additional features and functionality
 - BDC, Excel Services, Audiences, User Profiles
- ◆ Extends WSS core functionality
 - Enterprise Search
- ◆ Exposes additional object models and Web services

Business Data Catalog

- ◆ Abstraction layer for connecting to data
 - OLE-DB
 - Web Services
- ◆ Manages connections
- ◆ Manages data definitions
- ◆ Enables you to consume data without writing 'plumbing' code

Excel Services

- ◆ Excel Calculation Services
- ◆ Excel Web Services
- ◆ Excel Web Parts

User Profiles

- ◆ Complete profile subsystem
- ◆ Accessible to developers
- ◆ Integrated with 'My Sites'
- ◆ Provides the basis for People Search

Enterprise Search

- ◆ Extends indexing to include
 - File shares
 - External SharePoint sites
 - Non-SharePoint sites
 - BDC Data
 - Exchange Public Folders
 - Lotus Notes Data
 - People

Audiences and Targeting

- ◆ Audiences defined on:
 - User profile properties
 - Group membership
 - Organizational hierarchy
- ◆ Targeting surfaces information to audience members

Review

- ◆ SharePoint as a Development Platform
- ◆ SharePoint Tools and Technologies for Developers
- ◆ Comparing MOSS 2007 to WSS 3.0