

Visio 2010: Democratizing Business Process Management

Visio 2010’s advanced diagramming tools help you organize and simplify business process complexity with pre-defined process templates, subprocesses, dynamic, data-driven visuals and new ways to share on the Web in real-time.

Whether you’re capturing existing business processes, analyzing your supply chain, or monitoring business process performance, Visio’s new tools and more intuitive interface make it easier for business and IT users to map processes and share business insight across the organization. Start by building your diagrams with a diverse set of standardized modern shapes. Organize your business processes visually and logically with Visio subprocesses and containers.

Simplify large and complex diagrams with pre-defined shapes, templates, subprocesses and validation

JUMP-START DIAGRAMMING

Meet your diagramming needs for IT, business, process management, compliance or quality initiatives, and more with modern pre-defined shapes and intelligent templates. Whether you’re capturing existing ad-hoc processes, optimizing human and document workflows, or designing new streamlined processes, Visio 2010 will help you create diagrams quickly and easily with features such as the Quick Shapes Mini Toolbar, Page Auto Size, and Auto Align & Space. Creating diagrams is more intuitive with the enhanced Shapes Window for easy access to shapes and a new Status Bar that helps you move easily within and between diagrams. Use Shape Data and Data Graphics to analyze processes, identify ways to streamline them, and show the impact of process changes.

- Create professional-looking and easy-to-understand diagrams with pre-defined shapes and templates.
- Quickly choose the shapes you use most often from the Quick Shapes Mini Toolbar.
- Add and align shapes easily and accurately with Auto Align & Space.
- Automatically resize the canvas to fit your diagram with page Auto Size.

MAP AND ANALYZE BUSINESS PROCESSES FASTER

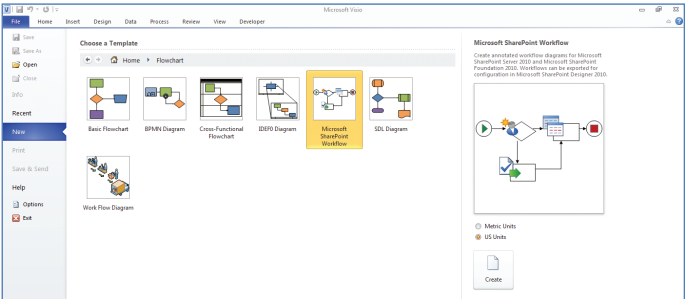
Using standardized notations, such as BPMN 1.2, helps all process participants, business and IT users alike, build diagrams that conform to standards and make complex business process information easier to understand. Use pre-defined shapes to create Six Sigma House of Quality diagrams and compliance initiative documentation. With one click, add Swimlanes, Phases, or Pages to the enhanced Cross Functional Flowchart template.

You can organize related shapes visually and logically by adding them to Containers. Visio 2010 Subprocesses automate much of the work by breaking down and organizing subprocesses based on the groups or people responsible for them. You can start a process diagram at a high level and fill in subprocess details later on, or document a process in complete detail and then reorganize it into subprocesses. Visio diagram validation helps you see whether diagrams are properly constructed based on built-in or customized sets of rules.

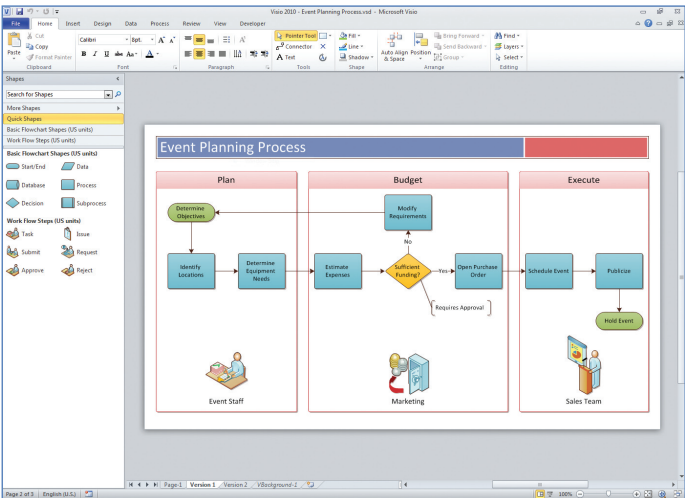
- Clarify how shapes relate to each other in diagrams, and quickly organize them logically and visually by adding, reordering, and removing shapes in a Container.
- Build a brand new subprocess with the Create New command. Visio inserts a new blank page and adds the page name and a hyperlink to that page to the Subprocess shape.

Then, through links to popular data sources (such as Microsoft® Excel® or SQL Server®), dynamic, data-driven visuals show the status of your workflows or display your real-time performance data, automatically refreshed right within your diagram. Finally, with just a few clicks, you can publish your data-linked diagram to SharePoint®, and share it with others throughout your enterprise via their browser.

Together, simplicity, data-driven shapes, and Web sharing make Visio 2010 one of the most powerful ways to see and understand important business and IT information.

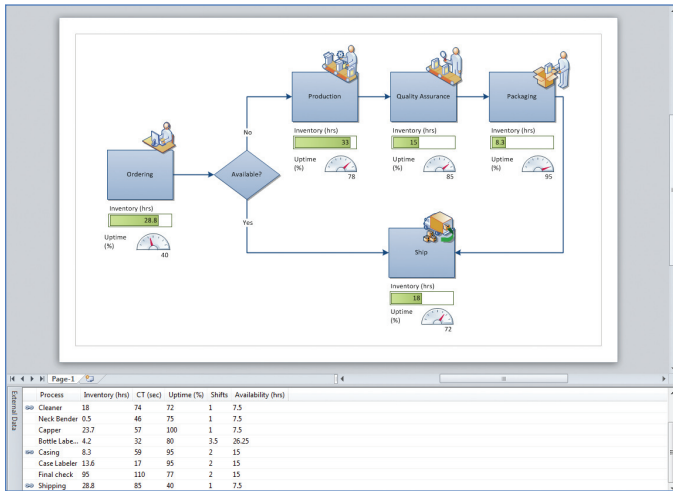


- Jump-start diagramming in Visio® 2010 Backstage View with business process templates and sample diagrams
- Reorganize existing shapes into subprocesses with the Create from Selection command. Visio adds a new page, moves the selected shapes to that page and adds a hyperlinked Subprocess shape to the current page.
- Use the Link to Existing command to create a hyperlink to an existing subprocess page in the current document or to an external document, such as one stored in a SharePoint 2010 Process Repository.
- Check diagrams for common diagrammatic or business rule errors by clicking Check Diagram to see a list of issues that require correction.



Add clarity to diagrams using Subprocesses and Containers to group related shapes visually and logically

Analyze and visualize process performance with dynamic, data-driven visuals



Dynamic, data-driven diagram in Visio® 2010 created using Automatic Data Linking and Data Graphics

SEE REAL-TIME PROCESS PERFORMANCE WITH DIAGRAMS

Gaining a clear and complete view of your business processes requires both a high-level perspective and detailed data. With just a few clicks, Visio® 2010 helps you see the entire picture by showing meaningful information and data graphically in a single, always up-to-date diagram.

- Easily connect your diagrams to one or more data sources including Microsoft® Excel®, Access®, SQL Server®, SharePoint® Foundation List, or any OLEDB/ODBC-compliant database using the Data Selector and Automatic Link wizards.

- Visualize the effect of proposed process changes by linking diagrams to business data.

- Display real-time performance data right within diagram shapes, based on conditions you define, using expressive graphics such as color, icons, symbols, and data bars. Then, add a legend to explain the meaning of your data-linked graphics.

- Keep the linked data in your diagrams up-to-date effortlessly using Automatic Refresh, which can refresh data automatically at specific time intervals you set.

Create workflows and monitor process performance with SharePoint Workflows and Visio Services

IMPROVE BUSINESS PROCESS AND WORKFLOW PERFORMANCE

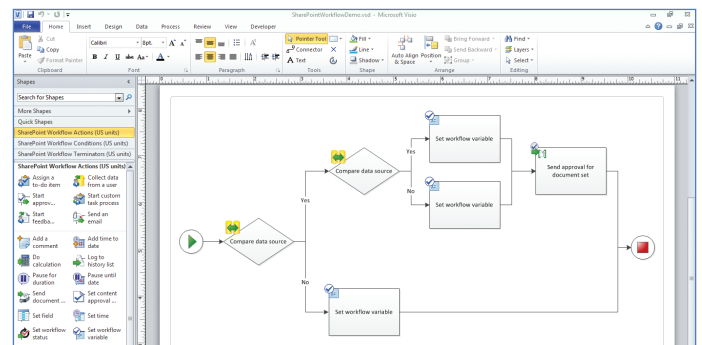
If you're already familiar with Visio flowcharting, you can create SharePoint workflows directly in Visio with the new, advanced SharePoint Workflow template, which contains pre-defined workflow rules. By using Visio 2010 and SharePoint 2010 Visio Services, you can visually monitor the status and performance of business processes and workflows right within Visio diagrams.

- Create SharePoint workflows in Visio by dropping shapes from the new advanced SharePoint Workflow template onto a diagram page. The template contains SharePoint workflow rules, so you can easily validate your workflow.

- Validate and export your workflow from Visio 2010 into SharePoint Designer 2010 to further define workflow.

- Publish the workflow to SharePoint Server and enable the Workflow Visualization webpart to monitor the status of workflow execution, such as In Progress or Completed, as part of the Visio SharePoint Workflow diagram.

- Importing SharePoint workflows into Visio diagrams makes it easier for process stakeholders to review before publication.

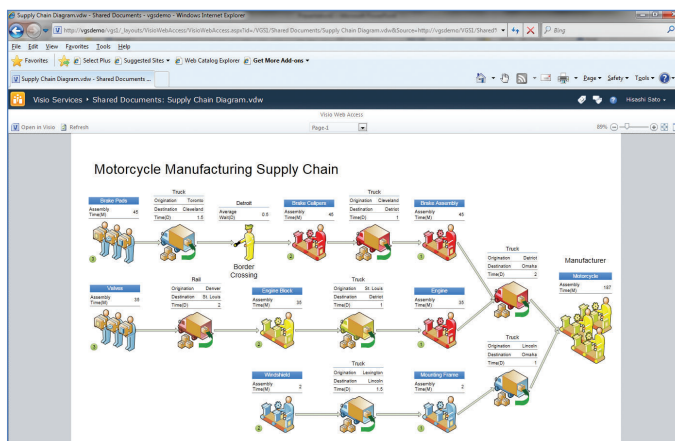


Graphically model SharePoint workflow using pre-defined Visio shapes and export your workflow to SharePoint Designer®

Share dynamic, data-linked diagrams with others through their browser

SHARE DIAGRAMS WITH OTHERS ON THE WEB

The success of compliance and quality initiatives depends on effective communication between business and IT. Share business insight and accelerate adoption of business processes with others across the organization by publishing your interactive, refreshable, data-linked Visio process diagrams to



Share real-time information with other—even if they don't own Visio—through interactive, refreshable diagrams published to SharePoint Server

SharePoint Server. Users can see real-time information in a diagram in their browsers at a high level, or delve into the details – even if they don't own Visio.

- Users can pan and zoom in the online diagram, follow hyperlinks in shapes, and refresh the data. Diagrams can be rendered in Microsoft® Silverlight™ (high-fidelity) or in PNG format.

- Display real-time process performance by linking your Visio workflows to data sources, such as Microsoft® Excel Services, SQL Server, SharePoint Foundation List, or any OLEDB/ODBC-compliant database.

- Users can view workflows in the browser, navigate around the diagram, and refresh the data at any time, even if they don't have Visio installed on their computers.

CREATE VISUAL MASHUPS USING VISIO SERVICES

Monitor business activity and process performance by creating visually compelling, interactive dashboards by combining Visio diagrams, real-time data, and different applications in SharePoint® Server. Visio Services and SharePoint Server 2010 integration supports visual mashups of actionable data and diagrams for an information-rich visual experience.

Learn more at www.Visio.com