

## Projektmanagement mit Project Server 2013 «Einführung einer Microsoft PPM Lösung anhand von Beispielen»

**Matthias Jäger / Kristian Bubalo / Martin Laukkanen – TPG The Project Group**

mjaeger@theprojectgroup.ch / kbubalo@theprojectgroup.ch / mlaukkanen@theprojectgroup.ch

### Microsoft Partner

Gold Application Development  
Gold Project and Portfolio Management  
Gold Business Intelligence

**SAP® Certified**  
Integration with SAP Applications

**Project Management Institute**  
Registered Education Provider



# Agenda

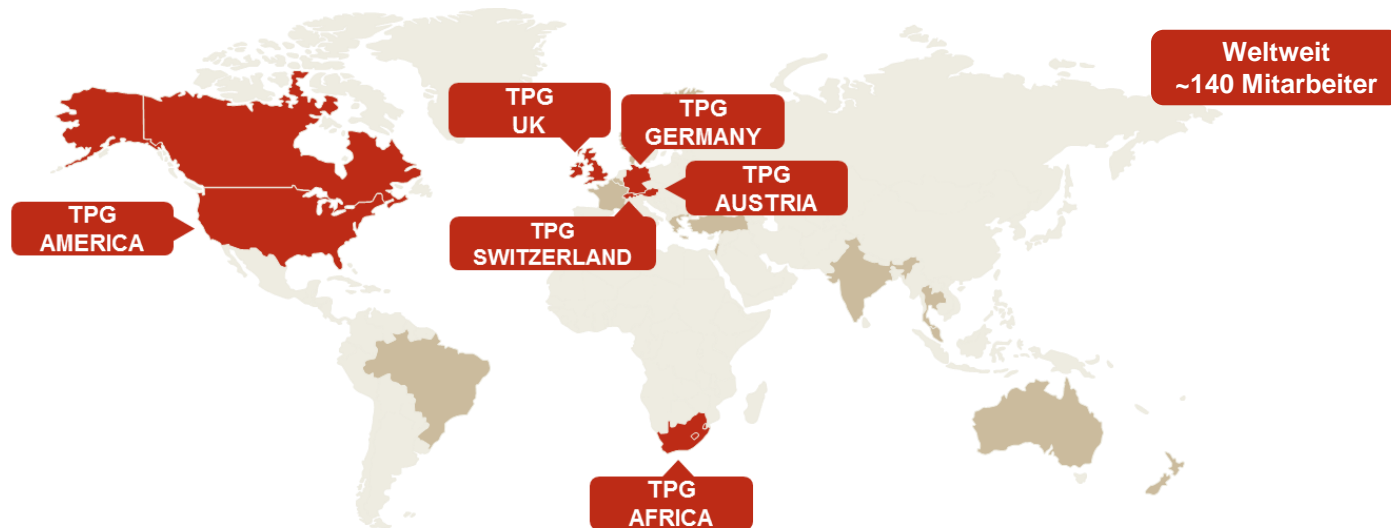
- TPG
- PPM mit Project Server
- Drei Kundenbeispiele
- Demo
- Q&A



# TPG – The Project Group

## Business Fokus

**Internationaler Full Service Anbieter** für Consulting, Implementierung, Hosting, Produkte und Seminare zu **Projektmanagement-Lösungen** auf Basis von *Microsoft Technologien* und integriert mit ERP Systemen wie SAP und Dynamics AX.



### Wordwide implementation Partners

DE   Solvin	BR   Proserpi	BE   Tobius	TR   ROTA	NZ   PIPC	TH   TNIS	IN   Diametriks	GR   PLANET
NO   Intersoft	FR   Teamsquare	AU   iPMO	SG   Systemethod	FI   Tietotalo	DK   Projectum	IL   MATAN	

# TPG – mit wem wir zusammenarbeiten...

## Partnerschaften und Zertifikate:

- Microsoft Gold Partner
- Mitglied des Microsoft Partner Advisory Council Board
- SAP zertifiziert (TPG PSLink)
- PMI zertifiziert (R.E.P)
- Weltweite Umsetzungspartner  
*(Australien, Brasilien, Dänemark, Finnland, Frankreich, Griechenland, Mexiko, Neuseeland, Norwegen, Singapur, Thailand, Türkei)*

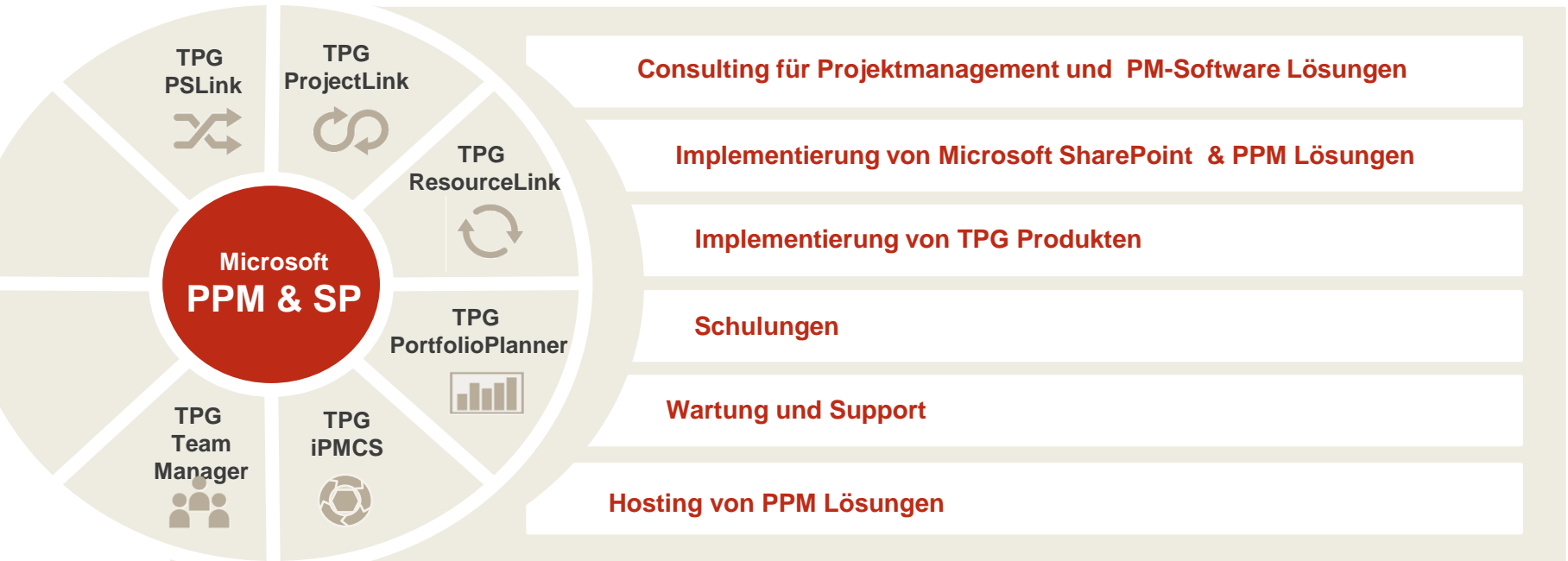
### Microsoft Partner

Gold Application Development  
Gold Project and Portfolio Management  
Gold Business Intelligence

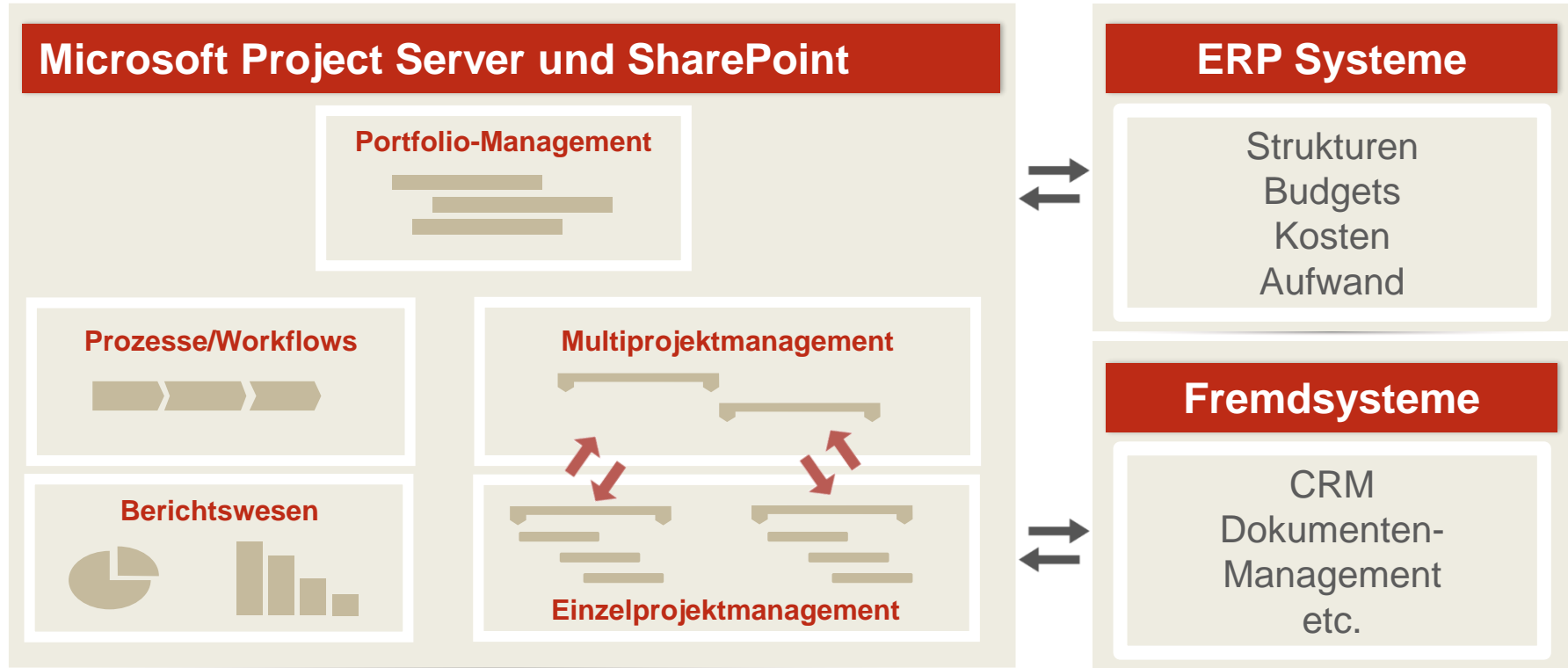
**SAP®** Certified  
Integration with SAP Applications



# Produkte und Services



# Lösungskomponenten und Anpassbarkeit



# Einige TPG Kunden – aus allen Branchen



swissgrid



Lonza



SIEMENS



VAILLANT GROUP



TATA STEEL

kemira



BAE SYSTEMS



KEIPER  
BY JOHNSON CONTROLS





 SharePoint

 Project

Project Online

 Office 365





# Microsoft Project Server

## Microsoft Partner

Gold Application Development  
Gold Project and Portfolio Management  
Gold Business Intelligence

**SAP®** Certified  
Integration with SAP Applications



# Microsoft Project Server Komponenten und Module

- Project Server basiert auf der SharePoint Server Technologie

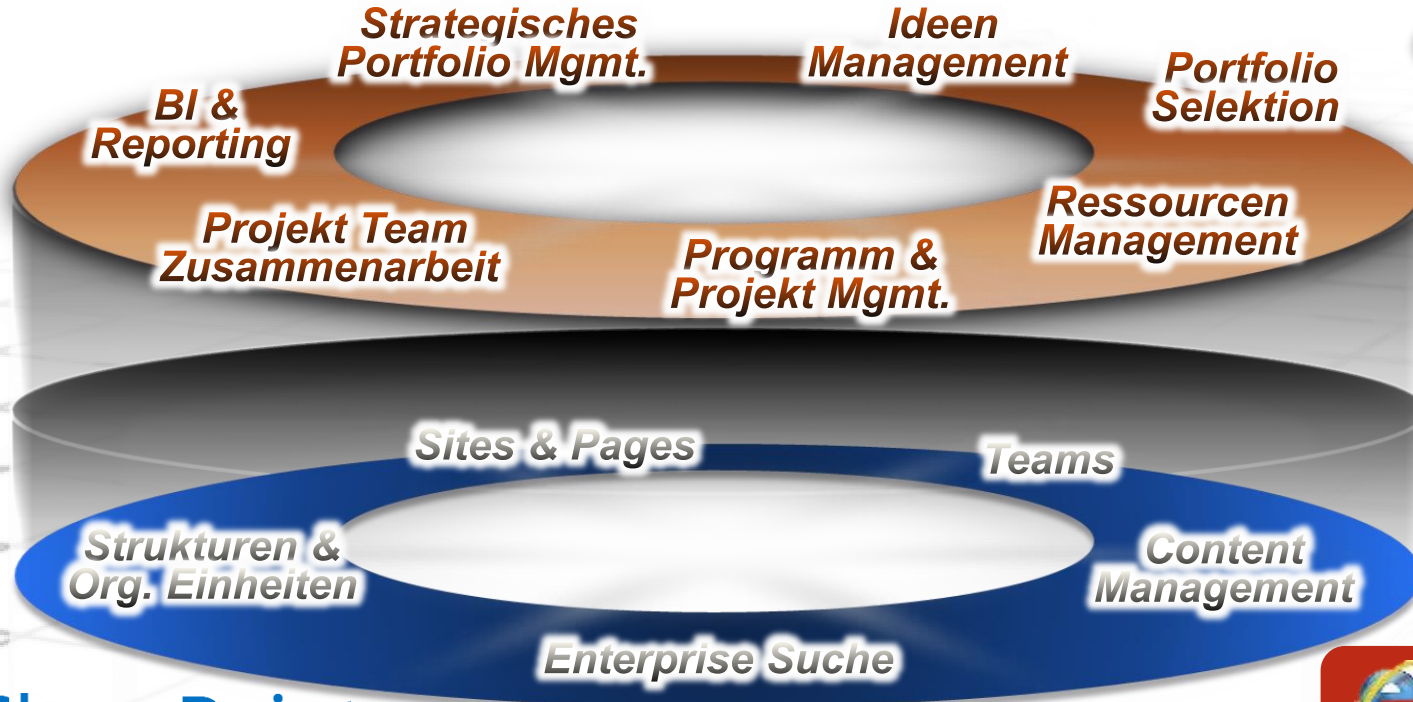


- Project Server besteht aus
  - Project Web App (PWA)
  - Project Professional



# SharePoint Server und Project Server 2013

## Erweiterte Projektzusammenarbeit



# Microsoft Project Online

## Cloud Lösung von Microsoft Office 365

Office Professional Plus

Exchange Online

SharePoint Online

Lync Online

Project Online

Visio Online



# Office 365

[www.office365.com](http://www.office365.com) | SaaS/Software As A Service

# Microsoft Project Online Lizenzen

## Cloud Lösung von Microsoft Office 365

### Office 365 Service

Project Online (Project Web App)

Project Pro für Office 365

Project Online mit Project Pro für Office 365

### Zielgruppe

Für Projekt-Teams und alle weiteren Projektbeteiligten

Für Projektleiter und Ressourcenmanager (Detailplanung)

Für Projektleiter, Ressourcenmanager, PMO, Portfoliomanager

Einzellizensierung oder über "Microsoft Enterprise Agreement"

# Microsoft Project Server „On-Premise“ Lizenzen

## Installation im Haus – in eigener Netzwerkumgebung

### Software

Project Web App CAL  
SharePoint Enterprise CAL

CAL = Client Access Licence

Project  
Professional  
(inkl. PWA CAL)

SharePoint Server / Project Server

Windows Server / SQL Server

### Zielgruppe

Für Projekt-Teams und alle weiteren  
Projektbeteiligten

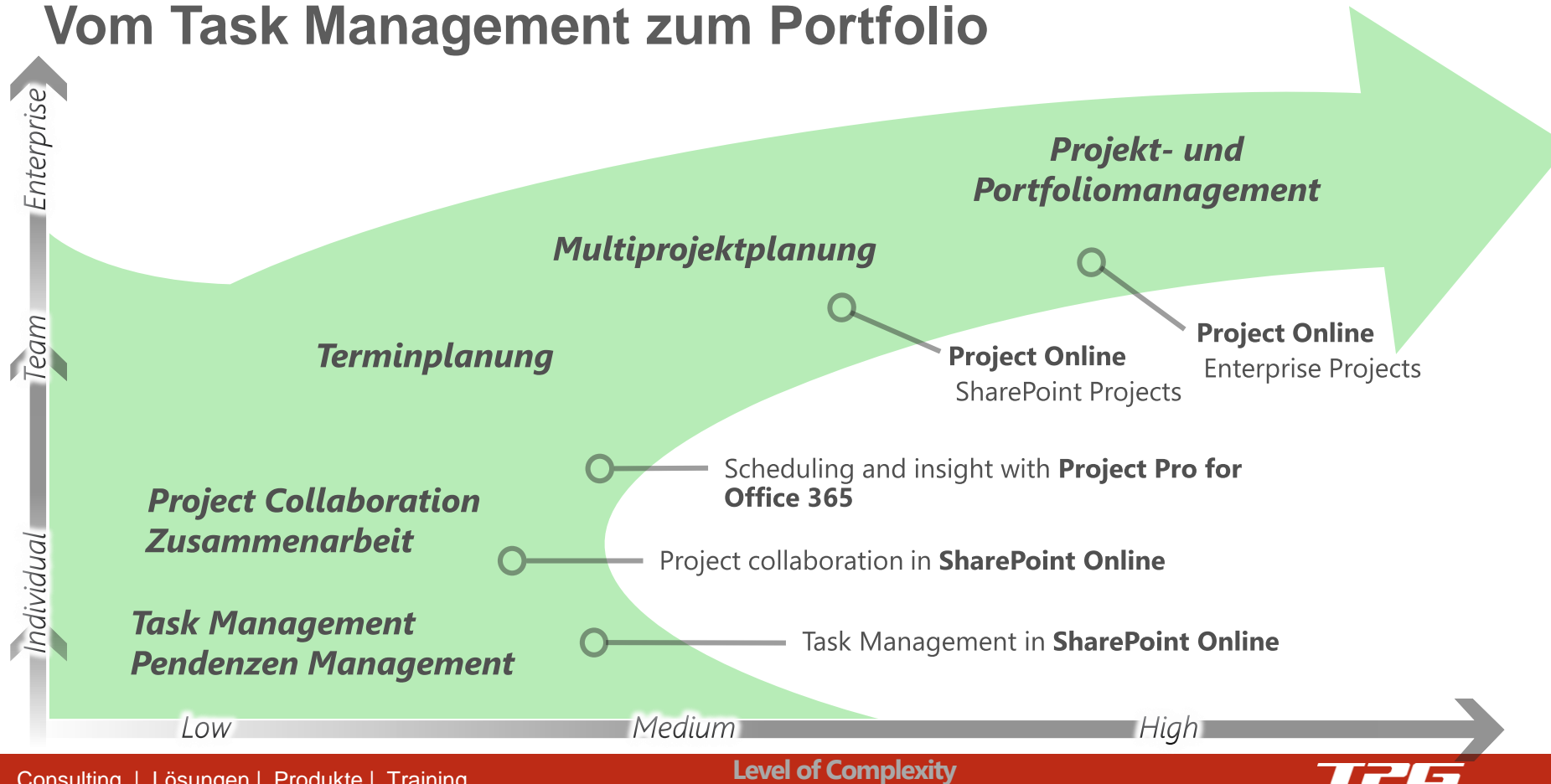
Für Projektleiter und Ressourcen-  
manager (Detailplanung)

SharePoint Enterprise Edition &  
Project Server als Applikationsserver

Betriebssystem und  
Datenbankserver

# Microsoft's Project Management Funktionen

## Vom Task Management zum Portfolio



# Projekt-Portfoliomanagement (PPM)

## Microsoft Partner

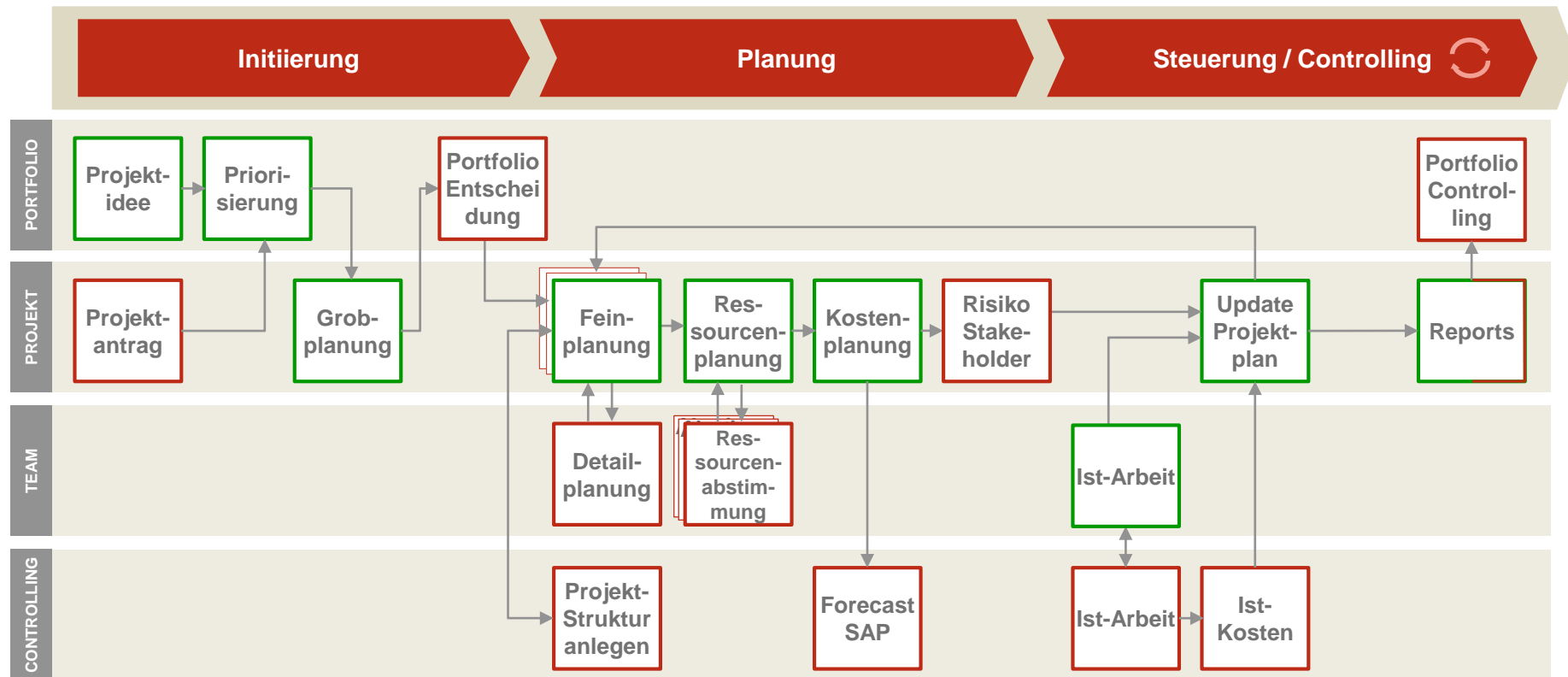
Gold Application Development  
Gold Project and Portfolio Management  
Gold Business Intelligence

**SAP®** Certified  
Integration with SAP Applications





# PPM-Prozesse



# Drei verschiedene Kundenbeispiele

## 2010 vs. 2013 vs. Cloud

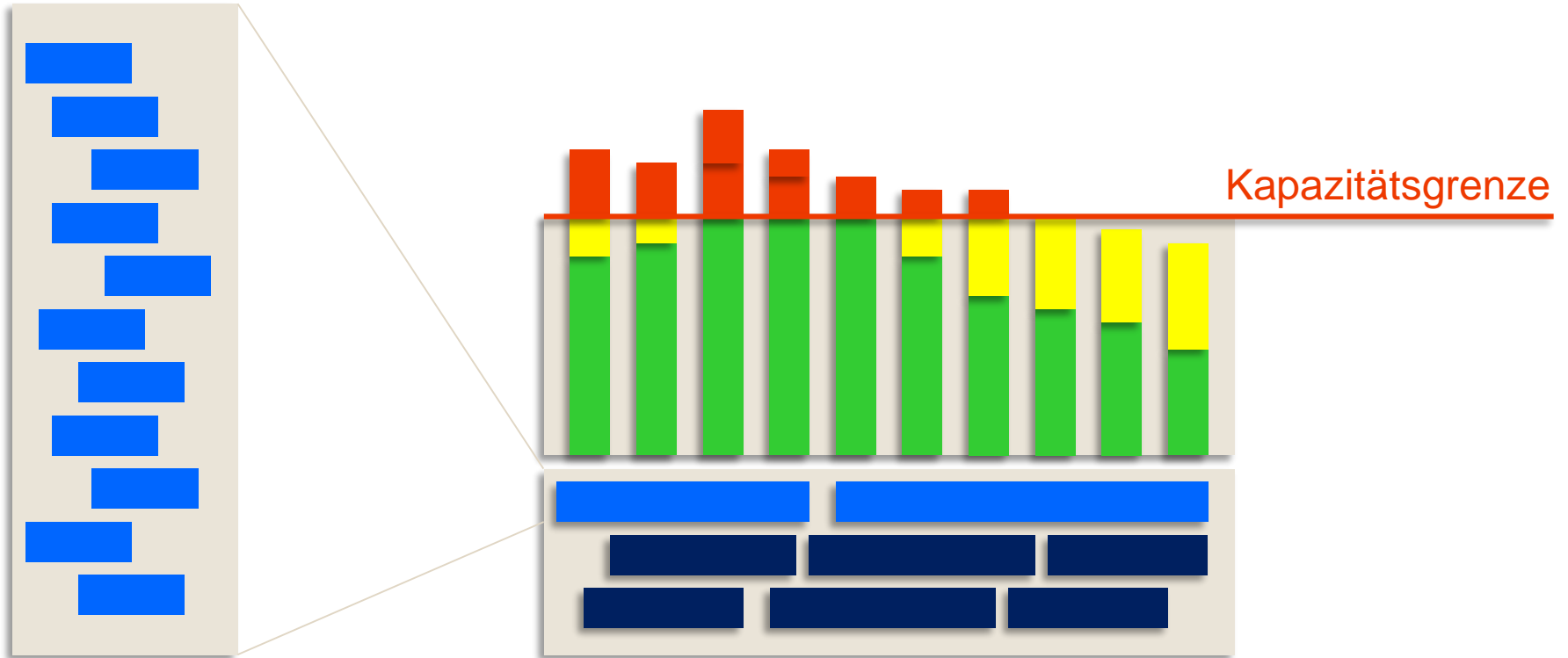
Project Server 2010 mit ERP Integration

Project Server 2013 "On-Premise"

Project Online "Cloud Lösung"

# „Einfachste“ Anforderungen an die Ressourcenplanung

Wer gewinnt das Ressourcen Ping-Pong zwischen Projekten und Linie?

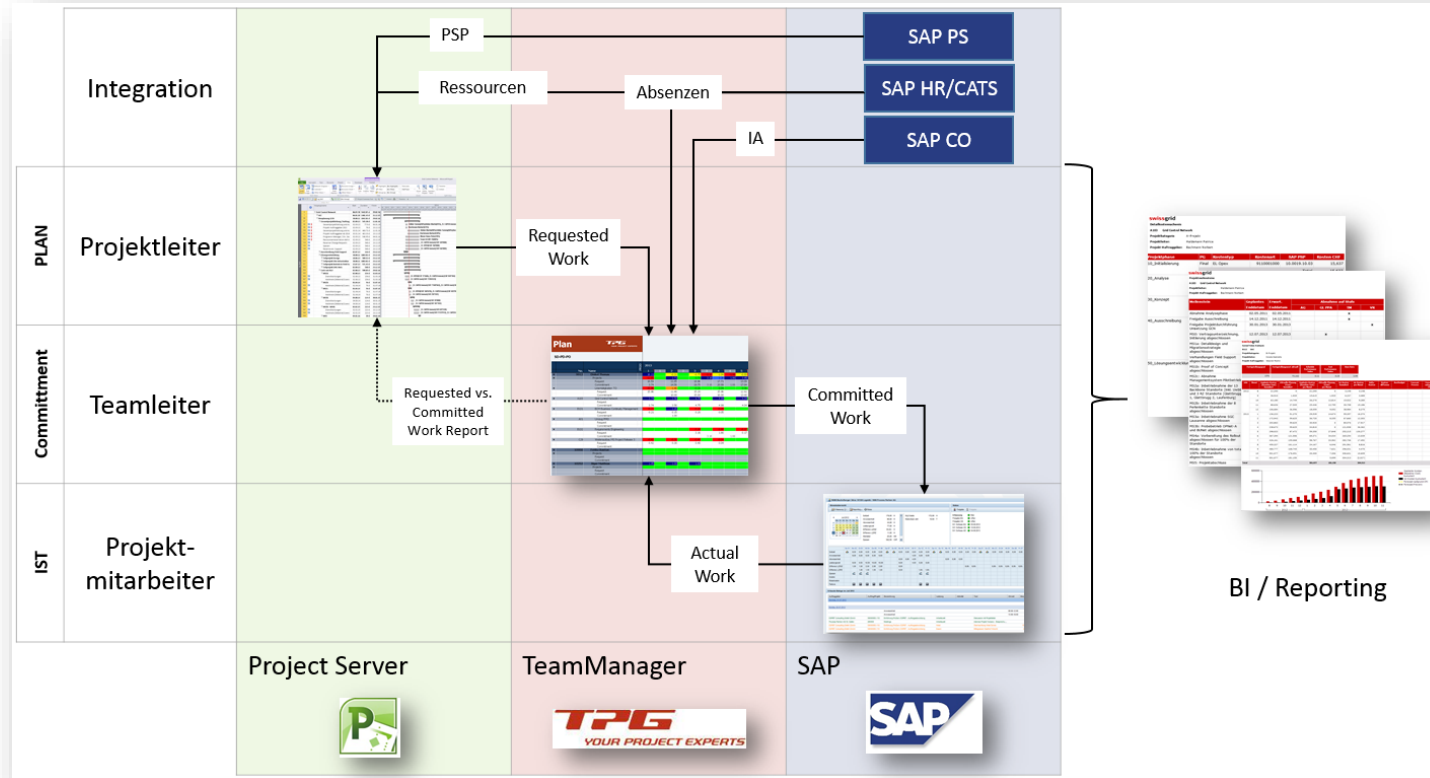


Neue Projekte

Laufende Projekte, Grundlasten, Innenaufträge, Absenzen

# Systemlandschaft mit SAP-Integration

## Projekt-Ressourcenplanung vs. Linien-Commitment vs. Mitarbeiter-Istwert



# Ausgangslage und Anforderungen

- Mandantenfähigkeit mit Project-/Resource Departments
- Volle SharePoint-Integration (Portal, Intranet, Work Management Service mit Newsfeed, BI, SSRS, SSAS)
- Individualanforderungen eines Mandanten:
  - Mehrstufiger Planungsprozess: Budget vs. Plan vs. Ist (Project Professional)
  - Solide und erweiterbare Timesheet-Lösung (Mehrfacheinträge und Notizen pro Tag)
- Anforderungen aller Mandanten:
  - Erstellung und Management des Projektportfolios, Einzelterminplanung und SSRS/BI-Reporting in Project Web App

# Ausblick und „Lessons Learned“

- Case Study demnächst verfügbar
- Ausbau Project Server auf ca. 10-15 verschiedene Abteilungen (Mandanten) in Schweiz und Europa
- SAP Integration nach Einführung SAP in 2015/2016
- Gemeinsame vs. getrennte SharePoint Architektur genau prüfen:
  - Anforderungen an individuelle Installationen von Service Packs und Patches (CU's): April und Juni 2014 CU für Project Server wichtig bei Cache und Save-Offline Problematik
  - Individuelles Customizing und Deployment von Project Server Apps und Solutions
  - Individualität und keine Abhängigkeit zur grossen SharePoint Intranet-Farm
- Mandanten-übergreifende PPM-Prozesse vor Konfiguration prüfen

# Project | 2014 Conference

Anaheim, CA | February 2-5, 2014



**THINK  
BIG.**  
WHAT'S YOUR  
**NEXT  
PROJECT?**

# Initial Position

## Processes and Usage of Microsoft Project/Office in the past

Centralized PMO  
team of project  
managers which  
supports in  
internal  
organization  
projects



Microsoft Project  
2003/2007 was  
used for project  
structure,  
scheduling,  
milestones and  
responsibilities



Project  
documents are  
saved in normal  
file storage



Status reports  
were written in  
Word files and  
sent out via E-  
Mail to  
stakeholder





# Considerations

## Arguments for a cloud based Project Online solution

Internal SharePoint Server infrastructure not available.

Windows XP and Vista clients



Technical

Quick and fast deployment/implementation desired.



Business

One-time initial high costs for On-Premise solution vs. recurring monthly costs by user for Project Online.



License Costs

Outsourcing of support to Microsoft (infrastructure) and Partner (customization)



Support

# Technical Considerations



## Some technical restrictions

- Be aware of client machine operating systems
  - No installation of Project Pro for Office365 on Windows XP or Vista available
  - Internet Explorer 9 or 10 is best
- Project Pro for Office365...
  - ... is not a full web based Microsoft Project Client
  - ... must be installed as a "Click to run" streaming client or as a full fat client version
  - ... cannot be installed on a separate Terminal-/Citrix Server as streaming client
- SSRS (SQL Server Reporting Services)
  - Can be used on Windows Azure or on internal server (Q1/2014)

# Business Considerations

## Requirements



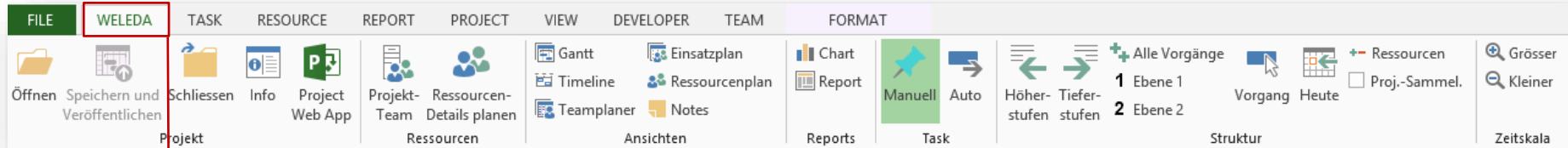
- Focus on operational Project Portfolio Management
  - Provide visibility and transparency for programs and portfolios
  - List of all running and planned projects including schedule and generic resources
  - High level cost planning on project level
  - Business Intelligence reports in Project Web App and Project Pro
  - Deeper usage of SharePoint project sites for documents, issues, risks and other lists
- Deployment and implementation
  - First prototype should be quick and fast deployed
  - A step by step approach is considered

# Business Considerations



## "Easy to use" Project Professional user interface

- Clear guidance and less training with streamlined adapted Ribbon
- Custom views/tables/filter/...



```
'TPG The Project Group / Version 1.0 / 01-Feb-2014
Sub CUSTOMERRibbon()
    Dim ribbonXml As String

    'Ribbon Name
    ribbonXml = "<mso:customUI xmlns:mso=""http://schemas.microsoft.com/office/2009/07/customui"">"
    ribbonXml = ribbonXml + "    <mso:ribbon>"
    ribbonXml = ribbonXml + "        <mso:qat/>"
    ribbonXml = ribbonXml + "        <mso:tabs>"
    ribbonXml = ribbonXml + "            <mso:tab id=""CUSTOMERTab"" label=""CUSTOMER NAME"" insertBeforeQ=""mso:TabTask"">"

    'Section - Project
    ribbonXml = ribbonXml + "                <mso:group id=""Project"" label=""Project"" autoScale=""false"">"
    ribbonXml = ribbonXml + "                    <mso:button id=""ProjectOpen"" label=""Open"" "
    ribbonXml = ribbonXml + "                    <imageMso=""FileOpen"" size=""large"" onAction=""FileOpen""/>"
    ribbonXml = ribbonXml + "                    <mso:control idQ=""mso:FilePublish"" visible=""true"" label=""Save and Publish"" "
    ribbonXml = ribbonXml + "                    <mso:button id=""ProjectClose"" label=""Close"" "
    ribbonXml = ribbonXml + "                    <imageMso=""FileClose"" size=""large"" onAction=""FileClose""/>"
```

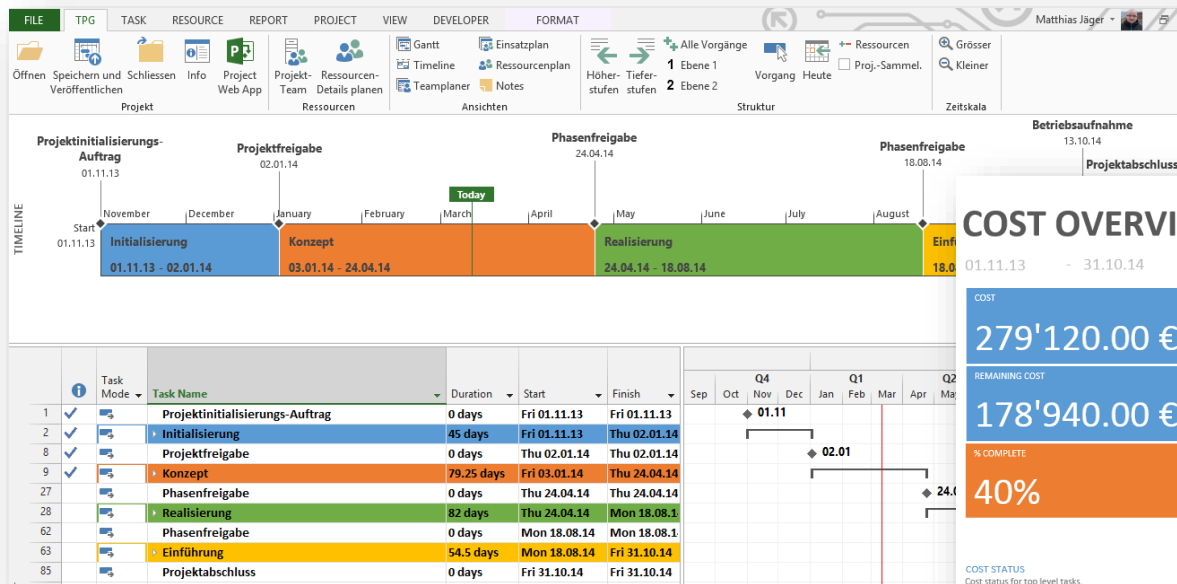
```
ribbonXml = ribbonXml + "            </mso:tab>"
ribbonXml = ribbonXml + "        </mso:tabs>"
ribbonXml = ribbonXml + "    </mso:ribbon>"
ribbonXml = ribbonXml + "</mso:customUI>"
```

```
ActiveProject.SetCustomUI (ribbonXml)
```

```
End Sub
```

# Project 2013 Desktop Reports

## Timeline & Dashboards in ProjPro



## COST OVERVIEW

01.11.13 - 31.10.14

**279'120.00 €**

**178'940.00 €**

**40%**

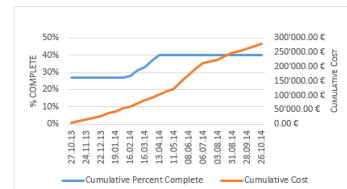
### COST STATUS

Cost status for top level tasks.

Name	Actual Cost	Remaining Cost	Baseline Cost	Cost	Cost Variance
Projektinitialisierungsauftrag	0.00 €	0.00 €	0.00 €	0.00 €	0.00 €
Initialisierungsauftrag	25'200.00 €	0.00 €	25'200.00 €	25'200.00 €	0.00 €
Projektfreigabe	0.00 €	0.00 €	0.00 €	0.00 €	0.00 €
Konzept	74'980.00 €	0.00 €	74'980.00 €	74'980.00 €	0.00 €

### PROGRESS VERSUS COST

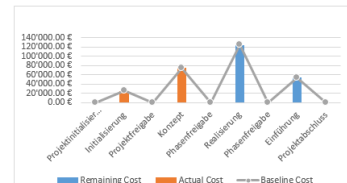
Progress made versus the cost spent over time. If % Complete line below the cumulative cost line, your project may be over budget.



### COST STATUS

Cost status for all top-level tasks. Is your baseline zero?

[Try setting as baseline](#)





# Customer Cost Considerations



One-time initial high costs for On-Premise solution vs. recurring monthly costs by user for Project Online.

## Office 365 Service

## Target Audience

Project Online (Project Web App)	Project Team Member and all Stakeholder
Project Pro for Office 365	For Project- and Resource Manager
Project Online with Project Pro for Office 365	For Project- /Resource Manager, PMO, Portfolio Manager

Recurring monthly single licenses or order via "Microsoft Enterprise Agreement"  
→ 200 seats promo → \$7 per user/month for Project Lite

## On-Premise Software Installation

Project Web App CAL SharePoint Enterprise CAL <small>CAL = Client Access Licence</small>
Project Professional <small>(inkl. PWA CAL)</small>
SharePoint Server Enterprise Edition Project Server
Windows Server / SQL Server

High initial costs → break even after five years+ for appr. 300 users

# Support Considerations

## Outsourcing of support and administration



Support

- Microsoft Office 365 support service
  - Responsible for infrastructure and general services
  - Fast reaction time and availability
- Partner
  - Customization, configuration, administration and training
  - Office365 tenant administration and support



# Outlook on the Future

- Project Online Case Study
- Roll-out to 220+ users in different countries in 2014
- Implement Power BI for Office 365/Project Online
- Implement SSRS with Windows Azure or internal server
- Provide recurring training and feedback sessions to users



## Q&A

### Microsoft Partner

Gold Application Development  
Gold Project and Portfolio Management  
Gold Business Intelligence

**SAP®** Certified  
Integration with SAP Applications



**Vielen Dank für Ihre Aufmerksamkeit!**

[www.theprojectgroup.ch](http://www.theprojectgroup.ch)

Für Rückfragen steht Ihnen gerne  
unser TPG Team heute zur Verfügung.

**Microsoft Partner**

Gold Application Development  
Gold Project and Portfolio Management  
Gold Business Intelligence

**SAP® Certified**  
Integration with SAP Applications



# Business Intelligence Reporting in Project Server

## Microsoft Partner

Gold Application Development  
Gold Project and Portfolio Management  
Gold Business Intelligence

**SAP®** Certified  
Integration with SAP Applications



Timelines, Visio, Visio Services, Excel,  
Excel Services, Project Desktop Reports, OData,  
PerformancePoint, Power View, Power BI, Power Pivot,  
SSRS, SSAS, SSIS, REST, SSRS, SharePoint Apps,  
Business Connectivity Services,  
Third Party Reporting Tools

# BI in Microsoft Project, Project Server & Project Online

## Welche Reporting Tools können verwendet werden?

Project 2013 Desktop Reports

Project Web App Sample Reports

Excel 2013 Reports with Project Web App Data

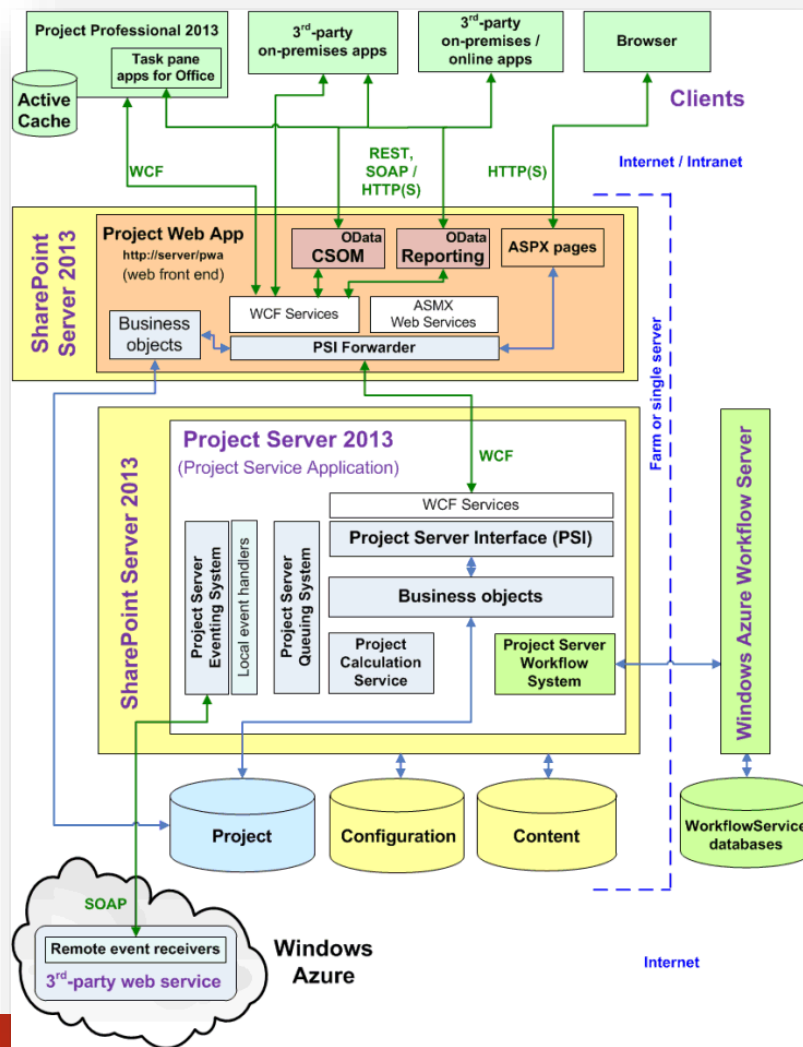
SQL Server Reporting Services (SSRS) with Project Web App Data and other SQL Data

Business Intelligence for Project in Office and SharePoint		
FEATURE	USE WHEN...	KEY CONSIDERATIONS
<b>EXCEL</b> Excel enables you to analyze and explore data in interactive views, such as charts and tables. You can use Excel to create and share interactive reports, scorecards, and dashboards.	<ul style="list-style-type: none"><li>Create reports quickly and easily using Project Web App data.</li><li>View, sort, and organize small to medium datasets in spreadsheets.</li><li>Create interactive dashboards that include filters and timeline controls.</li></ul>	<ul style="list-style-type: none"><li>Excel is your tool for Project Online data. Used for small to medium data sets (up to million records).</li><li>Supports the SQL Server tables, SQL Server Analysis Services cubes, and Office data sources that are used by Project Server and Project Online.</li><li>Project Web App includes sample Office data connections for sample reports.</li></ul>
<b>ADVANCED EXCEL BI FEATURES</b> Power Query, Power Pivot, Power View, and Power Map enable you to find and bring together data from a variety of sources and create powerful, interactive views and mashups in Excel.	<ul style="list-style-type: none"><li>Increase your reporting capabilities in Excel.</li><li>Discover, combine, &amp; refine data (Power Query).</li><li>Create a Data Model and define hierarchies and KPIs (Power Pivot).</li><li>Create interactive views, mashups, and reports (Power View).</li><li>Create (three-dimensional, geographical views (Power Map).</li></ul>	<ul style="list-style-type: none"><li>Sample reports in Project Web App use Power Pivot and Power View.</li><li>Power Pivot supports millions of records in Excel.</li><li>Power Map views are not yet supported in a browser window.</li></ul>
<b>EXCEL SERVICES</b> Excel Services enables you to view, interact with, and refresh workbooks in a browser window.	<ul style="list-style-type: none"><li>Share centrally managed workbooks that are published to SharePoint.</li><li>View and explore workbooks in a browser window similar to using the Excel client.</li><li>Display Excel content in SharePoint sites.</li></ul>	<ul style="list-style-type: none"><li>Supports refreshable data connections to the Project Web App database and Office sources.</li><li>Data refresh requires Secure Store or Kerberos constrained delegation.</li><li>Sample reports that are included with Project Web App use Excel Services and Secure Store.</li><li>Supports Effective User authentication for Analysis Services data cubes.</li></ul>
<b>POWER BI FOR OFFICE 365</b> Power BI for Office 365 extends your business intelligence capabilities in the cloud.	<ul style="list-style-type: none"><li>Set up scheduled data refresh for workbooks.</li><li>View and use larger workbooks (up to 250 MB) in Power BI (also in Power BI for Office 365).</li><li>Use related Analytics content to find and explore data using Power BI Q&amp;A.</li><li>Show and manage queries and data sources.</li><li>Access on-premises data from the cloud.</li><li>Download the Power BI Windows Store App to view workbook content on Windows tablets.</li></ul>	<ul style="list-style-type: none"><li>Available by subscription as an add-on or standalone service in the cloud (not available on-premises).</li><li>Provides an infrastructure to set up connectors to on-premises data.</li></ul>
<b>SQL SERVER REPORTING SERVICES</b> SQL Server Reporting Services enables you to develop and manage powerful reports.	<ul style="list-style-type: none"><li>Use Power View for SharePoint to create reports in a SharePoint library (on-premises).</li><li>Use Report Designer to create and edit reports, and data sources, and embed reporting into applications. (Typically, IT professionals and developers use this tool).</li><li>Use Report Builder to create reports and reusable report parts and shared datasets (Typically, IT professionals and power users use this tool).</li></ul>	<ul style="list-style-type: none"><li>Office 365 SQL Server Integration Services, Office add-in enables Reporting Services scenarios with Project Online.</li><li>Requires SQL 2012 SP1 to use SharePoint 2013 features.</li></ul>

<http://office.microsoft.com/en-us/project-help/redir/AF104195754.aspx?CTT=5&origin=HA104187048>

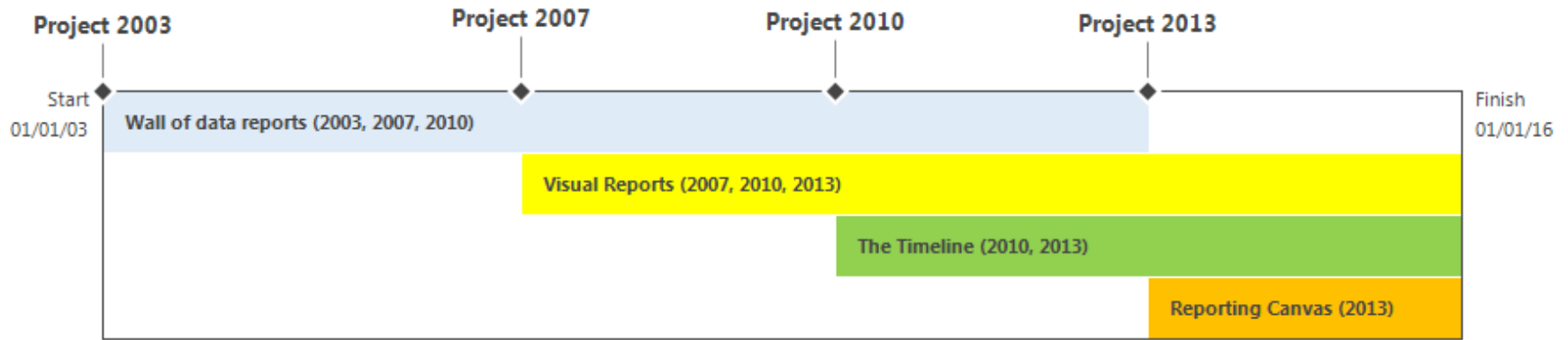
# Generelle Project Server 2013 Architektur

[http://msdn.microsoft.com/en-us/library/office/ee767687\(v=office.15\).aspx](http://msdn.microsoft.com/en-us/library/office/ee767687(v=office.15).aspx)



# Project Reporting in den Versionen

## Reports / Visual Reports / Timeline / “Real” Reports





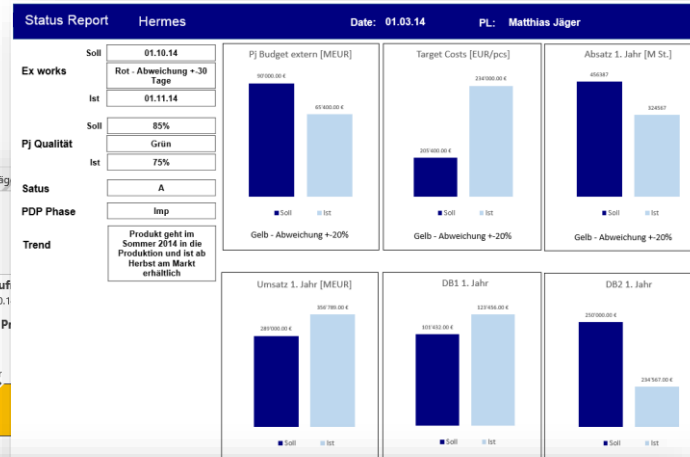
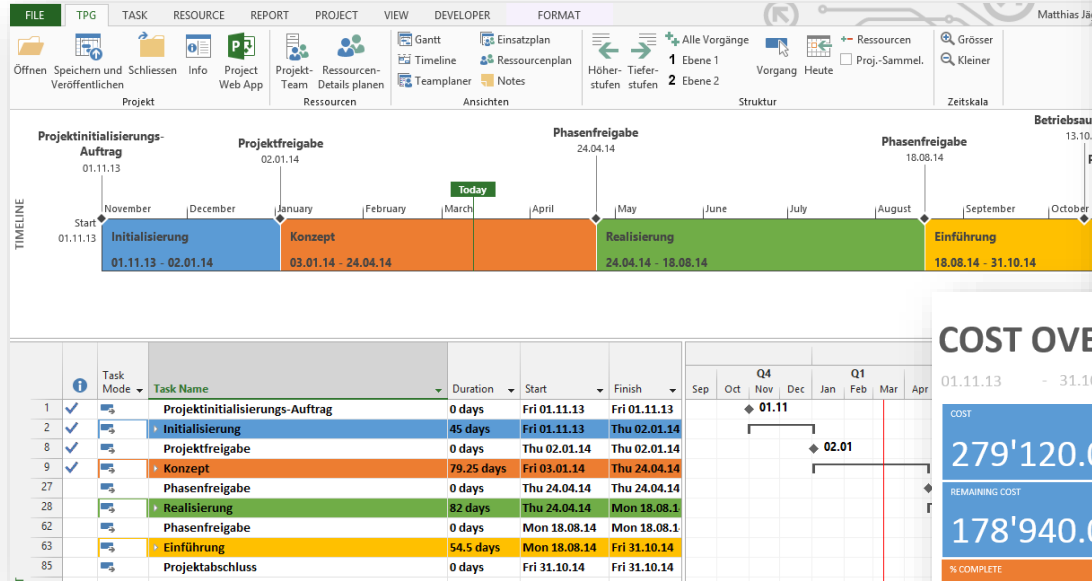
# Project Server 2013 & Project Online (2013)

## Bussiness Intelligence Änderungen zu 2010 / 2007 / ...

- Eine Project Server Datenbank vs. vier Datenbanken
- Reporting Schema mit Views, Tables, etc.
- Reporting Datentabellen können mit OData Feed aufgerufen werden
- Existierende Reports basierend auf Reporting-DB Tabellen und Views der Project Server 2010 Reporting Datenbank sind weiterhin lauffähig (Reporting Tabellen sind namentlich gleich)
- Einige OLAP Cube Einstellungen sind jetzt in der SharePoint Central Administration

# Project 2013 Desktop Reports

## Timeline & Reports - Demo



## COST OVERVIEW

01.11.13 - 31.10.14

COST

279'120.00 €

REMAINING COST

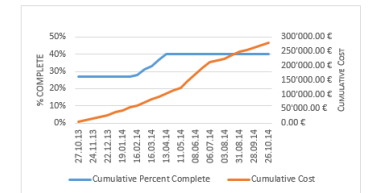
178'940.00 €

% COMPLETE

40%

PROGRESS VERSUS COST

Progress made versus the cost spent over time. If % Complete line below the cumulative cost line, your project may be over budget.



COST STATUS

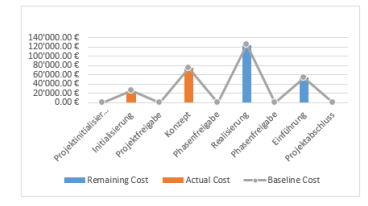
Cost status for all top-level tasks. Is your baseline zero?

Try setting as baseline

COST STATUS

Cost status for top level tasks.

Name	Actual Cost	Remaining Cost	Baseline Cost	Cost	Cost Variance
Projektinitialisierung	0.00 €	0.00 €	0.00 €	0.00 €	0.00 €
Initialisierung	25'200.00 €	0.00 €	25'200.00 €	25'200.00 €	0.00 €
Projektfreigabe	0.00 €	0.00 €	0.00 €	0.00 €	0.00 €
Konzept	74'980.00 €	0.00 €	74'980.00 €	74'980.00 €	0.00 €



# Project Server & Project Online Data

- Data Sources
  - Reporting Database / Tables / Views
  - Multidimensional OLAP
  - OData for Project Online / Project Server
- Was ist OData?
  - HTTP-basierend
  - Verfügbar initial mit SharePoint 2010 for list data, erweitert in 2013
  - Auch für Project Server 2013 verfügbar
  - <http://www.odata.org>
- Odata Entitäten in Project Server 2013 & Project Online
  - [https://COMPANY.sharepoint.com/sites/pwa/\\_api/ProjectData](https://COMPANY.sharepoint.com/sites/pwa/_api/ProjectData)

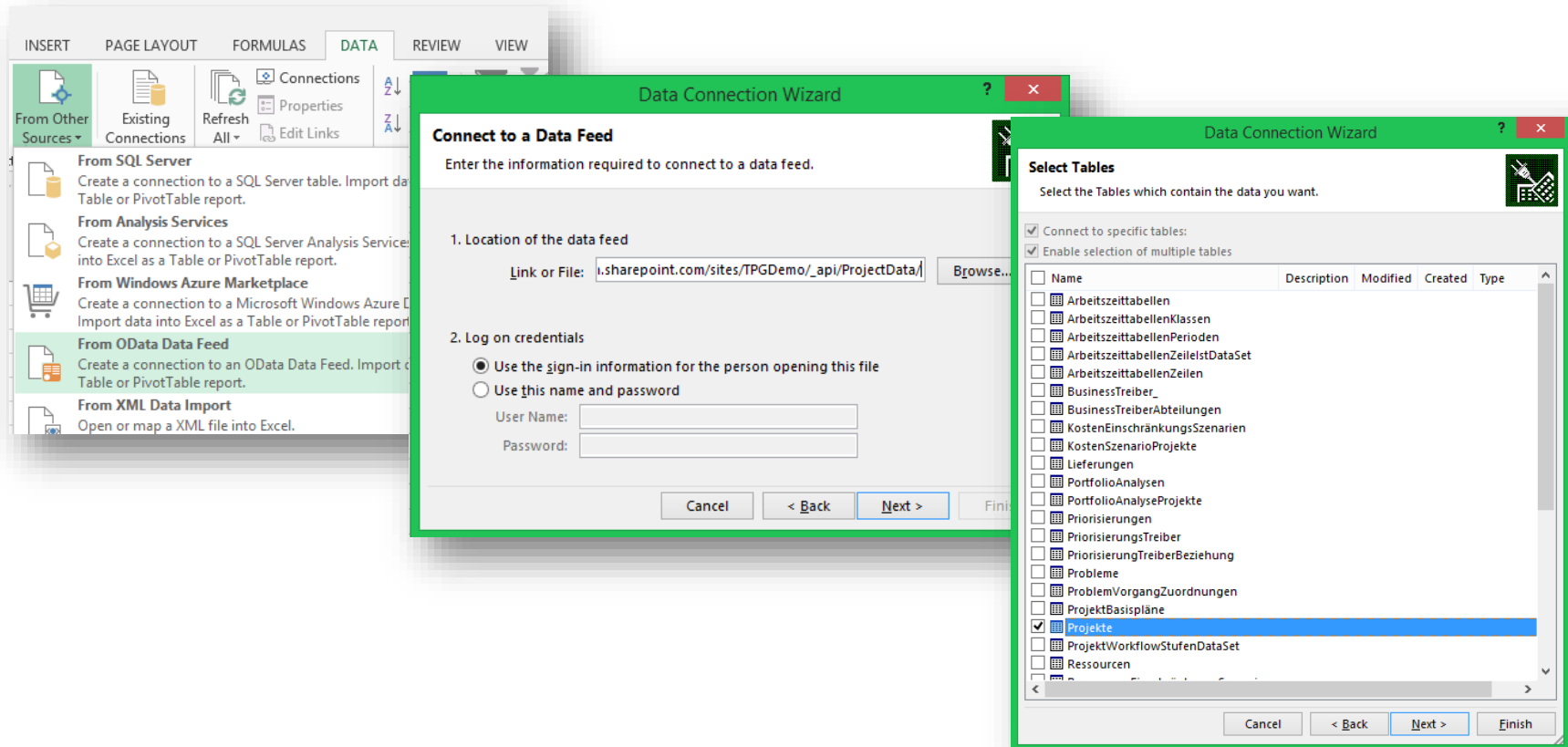
# Project Server & Project Online OData Feed

```
<?xml version="1.0" encoding="UTF-8"?>
- <service xmlns:atom="http://www.w3.org/2005/Atom" xmlns="http://www.w3.org/2007/app" xml:base="https://
  - <workspace>
    <atom:title>Default</atom:title>
    - <collection href="Projects">
      <atom:title>Projects</atom:title>
    </collection>
    - <collection href="ProjectBaselines">
      <atom:title>ProjectBaselines</atom:title>
    </collection>
    - <collection href="AssignmentBaselines">
      <atom:title>AssignmentBaselines</atom:title>
    </collection>
    - <collection href="AssignmentBaselineTimephasedDataSet">
      <atom:title>AssignmentBaselineTimephasedDataSet</atom:title>
    </collection>
    - <collection href="AssignmentTimephasedDataSet">
      <atom:title>AssignmentTimephasedDataSet</atom:title>
    </collection>
    - <collection href="Deliverables">
      <atom:title>Deliverables</atom:title>
    </collection>
    - <collection href="Issues">
      <atom:title>Issues</atom:title>
    </collection>
    - <collection href="IssueTaskAssociations">
      <atom:title>IssueTaskAssociations</atom:title>
    </collection>
    - <collection href="RiskTaskAssociations">
      <atom:title>RiskTaskAssociations</atom:title>
    </collection>
    - <collection href="ProjectWorkflowStageDataSet">
      <atom:title>ProjectWorkflowStageDataSet</atom:title>
    </collection>
    - <collection href="ResourceTimephasedDataSet">
      <atom:title>ResourceTimephasedDataSet</atom:title>
    </collection>
    - <collection href="Risks">
      <atom:title>Risks</atom:title>
    </collection>
    - <collection href="TaskBaselines">
      <atom:title>TaskBaselines</atom:title>
    </collection>
    - <collection href="TaskBaselineTimephasedDataSet">
      <atom:title>TaskBaselineTimephasedDataSet</atom:title>
```

- Odata Entitäten in Project Server 2013 & Project Online
  - <https://COMPANY.sharepoint.com/sites/pwa/api/ProjectData>

# OData für Project Server & Project Online

## Verbindungen und Datenauswahl



# OData für Project Server & Project Online

## Daten-Tabelle und Pivot

				Task\Milestone		TRUE	
ProjektlID	EnterpriseProjektTypBeschreibung	EnterpriseProjektTypID	EnterpriseProjekt	TaskOutlineLevel	2		
7608f484-86bf-e111-9f1e-00155d022681		d3e3f61e-95be-e111-9f1e-00155d022681	Merger & Aquis				
be33184f-76bf-e111-9f1e-00155d022681		2044287d-94be-e111-9f1e-00155d022681	Software Devel				
aef97dfa-8ebf-e111-9f1e-00155d022681		2044287d-94be-e111-9f1e-00155d022681	Software Devel				
30376acb-9abf-e111-9f1e-00155d022681		2044287d-94be-e111-9f1e-00155d022681	Software Devel				
4e02ce0e-58bf-e111-9f1e-00155d022681		2044287d-94be-e111-9f1e-00155d022681	Software Devel				
39f5a47c-7abf-e111-9f1e-00155d022681		0ef42fbc-94be-e111-9f1e-00155d022681	Marketing Cam				
77f6262c-f8a1-e211-9d3f-00155d493607	A project with all the enterprise cap	09fa52b4-059b-4527-926e-99f9be96437a	Enterprise Proj				
ccce7b1f-8bbf-e111-9f1e-00155d022681		c7546f28-95be-e111-9f1e-00155d022681	New Product D				
a38397f6-84bf-e111-9f1e-00155d022681		0ef42fbc-94be-e111-9f1e-00155d022681	Marketing Cam				
681d17ff-7dbf-e111-9f1e-00155d022681		2044287d-94be-e111-9f1e-00155d022681	Software Devel				
52c23ab8-84bf-e111-9f1e-00155d022681		0ef42fbc-94be-e111-9f1e-00155d022681	Marketing Cam				
8db785da-1e9a-e311-8272-a0481cd4cad8	Use this type to create a project plan	f4066fec-bd67-4db9-8e6f-9cb3d3b297a6	Visibility Mode				
095a08dc-77bf-e111-9f1e-00155d022681		2044287d-94be-e111-9f1e-00155d022681	Software Devel				
7d520098-5bbf-e111-9f1e-00155d022681		2044287d-94be-e111-9f1e-00155d022681	Software Devel				
3f009ceb-81bf-e111-9f1e-00155d022681							
332d3211-d3be-e111-9f1e-00155d022681							
dce23152-63bf-e111-9f1e-00155d022681							
7c57b324-f49a-e311-bfb5-00155d48fd1d							
a64d199b-cfbf-e111-9f1e-00155d022681							
6a4a8525-83bf-e111-9f1e-00155d022681							
2d094d97-90bf-e111-9f1e-00155d022681							
47e1dbd6-97bf-e111-9f1e-00155d022681							

Project Portfolio Status Report

ProjectName				Budget		Imp Date		Cost		Quality		Absatz Jahr 1		Umsatz Jahr 1		DB1 Jahr 1	
IT Projekte	Start	Status	Projekt Pha	Soll	Ist	Soll	Ist	Soll	Ist	Soll	Ist	Soll	Ist	Soll	Ist	Soll	Ist
Alpha	Jan 14	A	Cap	29'000	29'000	Mai 14	Mai 14	1.45	1.45	100%	100%	813'000	813'000	3'450'000	3'450'000	2'293'000	2'293'000
Beta	Feb 14	A	Def							100%	100%						
Gamma	Nov 13	A	Fea	1'500'000	676'000	Jan 15	Jan 15	2.2	2.2	100%	90%	4'078'000	4'078'000	12'198'000	12'198'000	8'402'000	8'402'000
Delta	Dez 14	A	Fea	1'500'000	676'000	Jul 13	Aug 14	1.42	1.42	100%	90%	1'812'000	1'812'000	7'812'000	7'812'000	5'629'000	5'629'000
IT	Jan 14	A				Jul 13											
HR	Feb 14	A		790'256	2'000'000	Aug 14	Mai 14			100%	100%						
COM	Nov 13	A	Fea	1	1	Aug 15	Aug 15	1.12	1.12	100%	100%	19	19	20	20	18	18
SharePoint	Dez 14	A	Def	0	0	Jun 14	Jun 14	1.82	1.82	100%	100%	2'800'000	2'800'000			10	10
Project	Jan 14	A	Fea	1	1	Aug 14	Aug 14	1.12	1.12	100%	100%	1	1	20	20	18	18
Marketing	Jan 14	A	Fea	26'000	26'000	Jan 14	Jan 14	1	0.92	100%	100%	51'000	51'000	262'000	262'000	215'000	215'000
Sales	Jan 14	A	Def							100%	100%						
PPM	Feb 14	A															
Beppi	Nov 13	A	Imp	1'050'000	970'000	Feb 13	Feb 13	2.07	2.07	100%	100%	2'265'000	2'265'000	11'940'000	11'940'000	5'375'000	5'375'000
Diverse	Dez 14	A	Fea	219'000	219'000	Mrz 15	Mrz 15	1.59	1.59	100%	100%	1'382'000	1'382'000	10'209'000	10'209'000	6'632'000	6'632'000
Maintenance Projekte																	
App1	Jun 12	A	Cap	0	0	Jun 13	Feb 14			100%	100%						
App2	Aug 13	A	Fea							100%	100%						
App3	Mrz 13	A				Dez 13											

# OData für Project Server & Project Online

## Spezifische Felder und System Query Options

- \$select zum Selektieren einzelner Felder und Performancesteigerung
  - [https://SERVER/PWASite/\\_api/ProjectData/Tasks?\\$select=ProjectName,TaskName,TaskMilestone,TaskFinishDate,TaskVariance](https://SERVER/PWASite/_api/ProjectData/Tasks?$select=ProjectName,TaskName,TaskMilestone,TaskFinishDate,TaskVariance)
  - Sprachabhängigkeit beachten:  
[https://SERVER/PWASite/\\_api/ProjectData/Vorg%C3%A4nge?\\$select=ProjektName,VorgangsName,VorgangIstMeilenstein,VorgangEndTermin,VorgangEndeAbweichung](https://SERVER/PWASite/_api/ProjectData/Vorg%C3%A4nge?$select=ProjektName,VorgangsName,VorgangIstMeilenstein,VorgangEndTermin,VorgangEndeAbweichung)

```
<?xml version="1.0" encoding="utf-8" ?>
- <feed xml:base="https://tpggmbh.sharepoint.com/sites/TPGDemo/_api/ProjectData/" xmlns="http://www.w3.org/2005/Atom" xmlns:d="http://schemas.microsoft.com/odata/2007" >
  <id>https://tpggmbh.sharepoint.com/sites/TPGDemo/_api/ProjectData/Vorg%C3%A4nge</id>
  <title type="text">Vorgänge</title>
  <updated>2014-03-13T06:52:11Z</updated>
  <link rel="self" title="Vorgänge" href="Vorg%C3%A4nge" />
- <entry>
  <id>https://tpggmbh.sharepoint.com/sites/TPGDemo/_api/ProjectData/Vorg%C3%A4nge(ProjektID=guid'aa5c2fbb-bf
  <category term="ReportingData.Vorgang" scheme="http://schemas.microsoft.com/ado/2007/08/dataservices/scheme" />
  <link rel="edit" title="Vorgang" href="Vorg%C3%A4nge(ProjektID=guid'aa5c2fbb-bfbc-e111-9f1e-00155d022681',Vorgang
  <title />
  <updated>2014-03-13T06:52:11Z</updated>
  <author>
    <name />
  </author>
  <content type="application/xml">
    <m:properties>
      <d:ProjectName>Skills-Management</d:ProjectName>
```

# OData für Project Server & Project Online

## System Query Options und Funktionen

- guid zum Selektieren von Projekten
  - `/_api/ProjectData/Projects(guid'b28fc3ef-99bf-e111-9f1e-00155d022681')/Tasks`
- Datumsfunktionen
  - `Int month(DateTime P0) - $filter=month(TaskFinishDate) eq 2`
- Textfunktionen
  - `bool substringof(string po, string p1) –`
- Mehr Funktionen auf [www.odata.org](http://www.odata.org)



# Project Server & Project Online

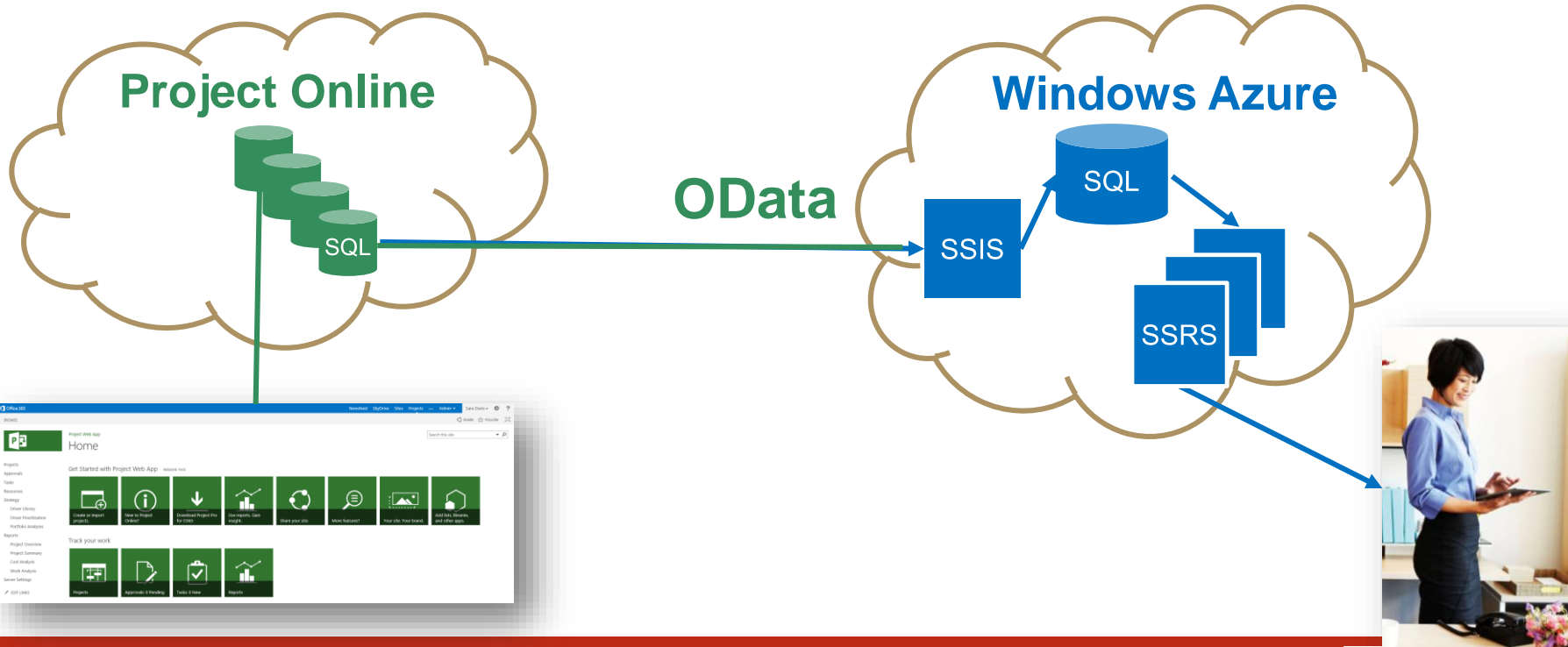
## SSRS = SQL Server Reporting Services

- Abfragen direkt auf die Datenbank bei “On Premise” Installationen

# Project Server & Project Online

## SSRS = SQL Server Reporting Services

- Windows Azure bietet neu eine SSIS Lösung für SSRS an



# Reporting Praxisbeispiele

## Microsoft Partner

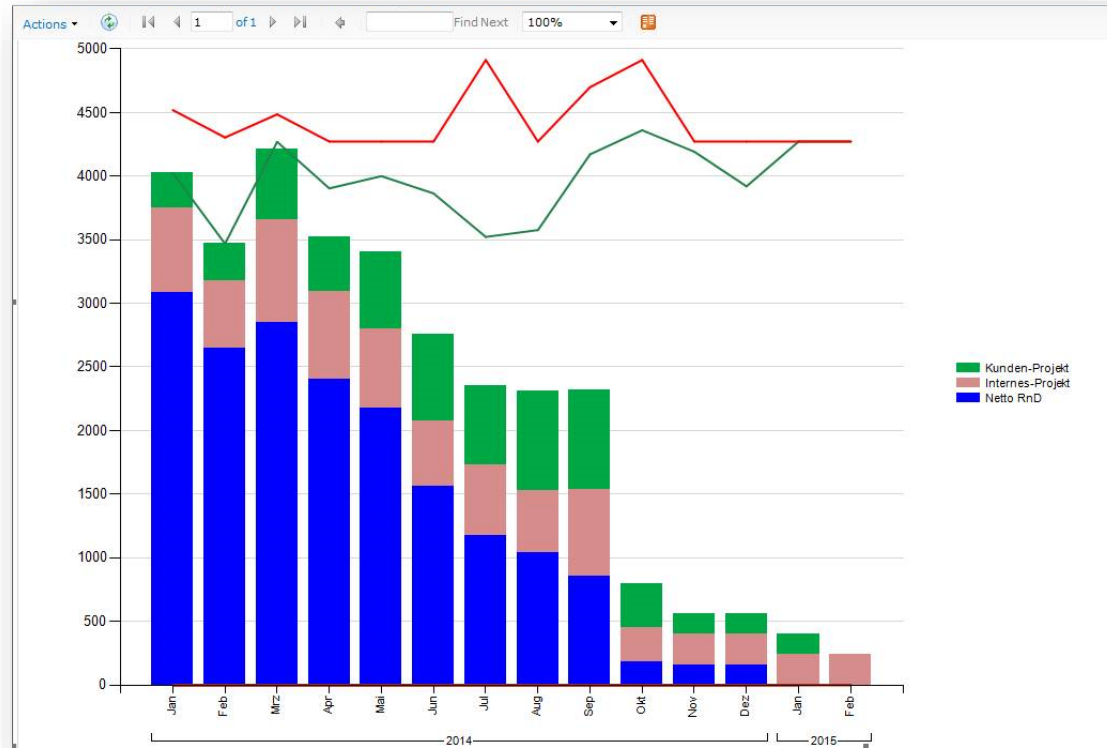
Gold Application Development  
Gold Project and Portfolio Management  
Gold Business Intelligence

**SAP®** Certified  
Integration with SAP Applications



# SSRS Lösung

## Ressourcenkapazitätsdiagramm





# TPG Apps für Sharepoint

## Microsoft Partner

Gold Application Development  
Gold Project and Portfolio Management  
Gold Business Intelligence

**SAP®** Certified  
Integration with SAP Applications



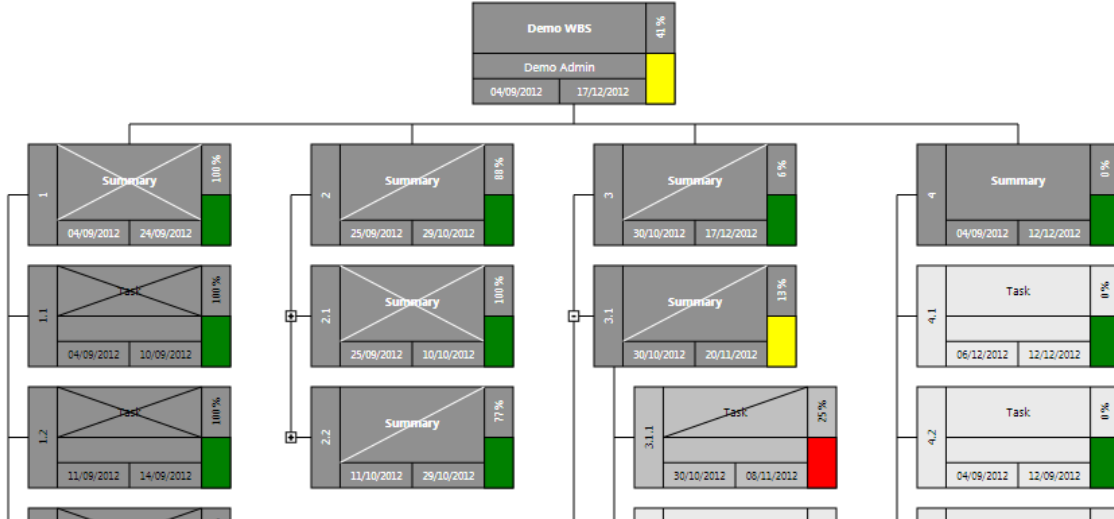
# TPG WBS Chart

Selected project: Demo WBS



Icons: ? (Help), TPG (Logo), and a circular arrow (Refresh).

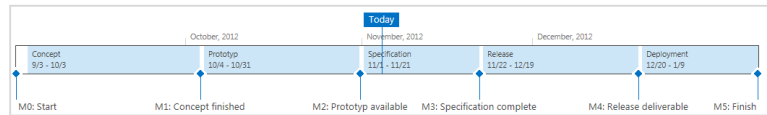
Selected project: Demo WBS



Icons: ? (Help), F1 (Help), C (Refresh), + (Expand), - (Collapse), and a mouse cursor.

Level	ID	Type	Name	Start Date	End Date	Progress
0	Demo WBS	Summary	Demo WBS	04/09/2012	17/12/2012	41%
1	1	Summary	Summary	04/09/2012	24/09/2012	100%
1	2	Summary	Summary	25/09/2012	29/10/2012	88%
1	3	Summary	Summary	30/10/2012	17/12/2012	6%
1	4	Summary	Summary	04/09/2012	12/12/2012	0%
2	1.1	Task	Task	04/09/2012	10/09/2012	100%
2	2.1	Summary	Summary	25/09/2012	10/10/2012	100%
2	2.2	Summary	Summary	11/10/2012	29/10/2012	77%
2	3.1	Summary	Summary	30/10/2012	20/11/2012	13%
2	3.1.1	Task	Task	30/10/2012	08/11/2012	25%
2	4.1	Task	Task	06/12/2012	12/12/2012	0%
2	4.2	Task	Task	04/09/2012	12/09/2012	0%

# TPG MTA Chart



## MTA Snapshots

+ new item or edit this list

All Items

...

MTA SnapshotData

✓ Title

Snapshot Demo

Snapshot Demo

Snapshot Demo

Snapshot Demo

Snapshot Demo

+ new item or edit this list

All Items

Edit Data

Find an item

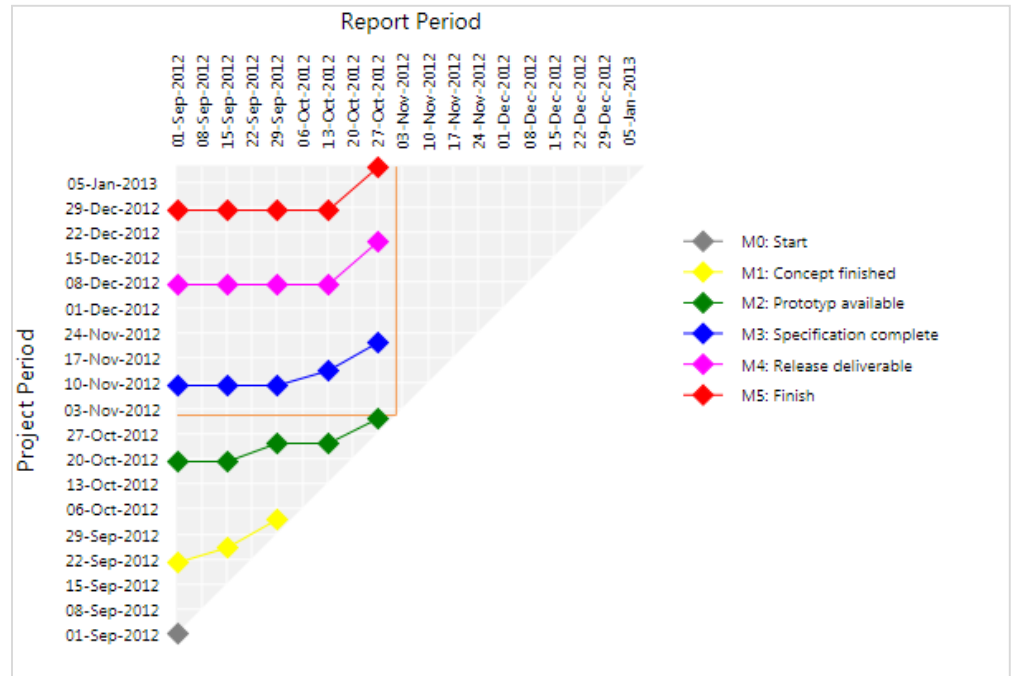
✓

Title

StartDate

SnapshotId

M0: Start	...	8/31/2012 9:00 PM	888698CF-E843-6E51-0988-F0F562F3D3BE
M1: Concept finished	...	9/21/2012 6:00 AM	888698CF-E843-6E51-0988-F0F562F3D3BE
M2: Prototyp available	...	10/19/2012 6:00 AM	888698CF-E843-6E51-0988-F0F562F3D3BE
M3: Specification complete	...	11/9/2012 7:00 AM	888698CF-E843-6E51-0988-F0F562F3D3BE
M4: Release deliverable	...	12/7/2012 7:00 AM	888698CF-E843-6E51-0988-F0F562F3D3BE
M5: Finish	...	12/28/2012 7:00 AM	888698CF-E843-6E51-0988-F0F562F3D3BE
M0: Start	...	8/31/2012 9:00 PM	F6313F0F-9083-1E17-C0BF-864FE6DF8310
M1: Concept finished	...	9/25/2012 6:00 AM	F6313F0F-9083-1E17-C0BF-864FE6DF8310
M2: Prototyp available	...	10/19/2012 6:00 AM	F6313F0F-9083-1E17-C0BF-864FE6DF8310
M3: Specification complete	...	11/9/2012 7:00 AM	F6313F0F-9083-1E17-C0BF-864FE6DF8310
M4: Release deliverable	...	12/7/2012 7:00 AM	F6313F0F-9083-1E17-C0BF-864FE6DF8310
M5: Finish	...	12/28/2012 7:00 AM	F6313F0F-9083-1E17-C0BF-864FE6DF8310





# TPG Risk Chart

## Risks ⓘ

⊕ new item or edit this list

[All Items](#)
[All Active Risks](#)
[All Closed Risks](#)
...

✓	📄	ID	Title	Assigned To	Status	Exposure	Category	Due Date
Count= 8								
1			Risk 1 🌿					
2			Risk 2 🌿					
3			Risk 3 🌿					
4			Risk 4 🌿					
5			Risk 5 🌿					
6			Risk 6 🌿					
7			Risk 7 🌿					
8			Risk 8 🌿					

Selected project: Demo Risk

Title ↓	Impact
Risk 1	5
Risk 2	5
Risk 3	5

Title \*

Owner

Assigned To

Status

Category

Due Date



Probability \*

 %
 

Impact \*

The magnitude of impact should the risk actually happen

Cost

The cost impact should the risk actually happen

Risk description	Risk description	Risk description	Risk description	Risk description
Risk description	Risk description	Risk description	Risk description	Risk description
Risk description	Risk description	Risk description	Risk description	Risk description
Risk description	Risk description	Risk description	Risk description	Risk description

# TPG The Project Group – Weltweite Adressen

## Hauptsitz München

Destouchesstr. 68  
D-80796 München  
Tel: +49 (89) 615593-30  
[info@theprojectgroup.com](mailto:info@theprojectgroup.com)

## Office Dortmund

Wülferichstraße 20  
D-44339 Dortmund  
Tel: +49 (231) 494 08 94  
[info@theprojectgroup.com](mailto:info@theprojectgroup.com)

## Office Mainz

Gonsenheimer Höhe 12  
D-55122 Mainz  
Tel: +49 (6131) 92 09 602  
[info@theprojectgroup.com](mailto:info@theprojectgroup.com)

## Niederlassung Austria, CEE

Mooslackengasse 17  
A-1190 Wien  
Tel: +43 (1) 23060 3145  
[Austria@theprojectgroup.com](mailto:Austria@theprojectgroup.com)

## Niederlassung Schweiz

Christoph Merian-Ring 11  
4153 Reinach BL  
Tel.: +41 (61) 711 33 11  
[Switzerland@theprojectgroup.com](mailto:Switzerland@theprojectgroup.com)

## Niederlassung Great Britain

New City Chambers  
36 Wood Street,  
Wakefield West Yorkshire, WF1 2HB  
Great Britain  
Tel: +44 8443350368  
[UK@theprojectgroup.com](mailto:UK@theprojectgroup.com)

## Niederlassung America

2500 York Road, Suite 115  
Jamison, PA 18929  
USA  
Tel: +1 800 804 0646  
[America@theprojectgroup.com](mailto:America@theprojectgroup.com)

## Niederlassung Africa

Route 21, Corporate Park  
c/o Nellmapius & Goedehoop Drive  
Irene | South Africa  
Tel: +27 12 345 3518  
[Africa@theprojectgroup.com](mailto:Africa@theprojectgroup.com)

**Vielen Dank für Ihre Aufmerksamkeit!**

[www.theprojectgroup.ch](http://www.theprojectgroup.ch)

Für Rückfragen steht Ihnen gerne  
unser TPG Team heute zur Verfügung.

**Microsoft Partner**

Gold Application Development  
Gold Project and Portfolio Management  
Gold Business Intelligence

**SAP® Certified**  
Integration with SAP Applications

