



# Microsoft Office Web Apps Product Guide

# Table of Contents

<b>Introduction</b>	<b>4</b>
<b>Office Web Apps: At-a-Glance</b>	<b>5</b>
<b>Office Web Apps: A Closer Look</b>	<b>7</b>
Never be without the tools you need	7
View in the browser	8
Edit in the browser	9
Edit in your desktop applications	9
What you see is what you get	10
Viewing in Word Web App	10
Viewing in PowerPoint Web App	11
Viewing in Excel Web App	12
Viewing in OneNote Web App	13
View Microsoft Office files on your mobile device	15
Edit your content with confidence	15
Preserve your content from desktop to web and back again	15
A good companion always comes through in a pinch	16
Work more easily with others	17
Work together without waiting your turn	18
Update content the moment it changes	19
Get started right away	20
Fine-tune and format your content using tools you already know	20
<b>Office Web Apps: Features by Application</b>	<b>22</b>
Word Web App	22
Excel Web App	27
PowerPoint Web App	32
OneNote Web App	37
<b>Platform Comparison</b>	<b>43</b>
Using Office Web Apps on SkyDrive	43
Using Office Web Apps with Hotmail	44
Using Office Web Apps on SharePoint 2010	44
Platform comparison overview	46



<b>FAQ.....</b>	<b>47</b>
About Office Web Apps.....	47
Accessing Office Web Apps .....	48
Using Office Web Apps.....	49
<b>Requirements\Disclosures .....</b>	<b>53</b>



## Introduction

Whether you're in the office, at home, or on the road, Microsoft® Office Web Apps give you the tools to extend your Microsoft Office experience to the web and get things done on your terms. These convenient online companions to Microsoft Word, Excel®, PowerPoint®, and OneNote® provide an easy way to view, edit, and share your files right from a web browser.<sup>1</sup>

- Work in a familiar editing environment, using features that you already know.
- Easily work together with people in multiple locations, regardless of what Microsoft Office version is installed on their computers or if Microsoft Office is not installed.
- View your files in high-fidelity and edit them with confidence.

Welcome to Office Web Apps—the perfect web-based companions to Microsoft Office 2010.

---

<sup>1</sup> Office Web Apps require an appropriate device, Internet connection, supported web browser, and either Microsoft SharePoint® Foundation 2010 for business or, for personal use, a free Windows Live ID to access Office Web Apps on Windows Live™ SkyDrive™. There are some differences between the features of Office Web Apps and the Office 2010 applications.



## Office Web Apps: At-a-Glance

### Never be without the tools you need

You're away from your home or office and away from your computer. You are about to give a presentation when critical new customer data comes in. Or perhaps you're turning in an important paper when inspiration strikes. What do you do when you discover that the only computer available does not have Microsoft Office installed?

Just open the file in your web browser. Office Web Apps helps you get things done virtually whenever, wherever. Post the content that you create in PowerPoint, Word, Excel, and OneNote on your desktop to a Microsoft SharePoint® 2010 site or a Windows Live™ SkyDrive™ folder. Then access, view, edit, and share those files from almost any computer with an Internet connection. You can even access and view Word, Excel and PowerPoint content from a browser on your mobile device.<sup>2</sup>

### What you see is what you get

You spend time to make all of the content you create look its best. Wouldn't you like to know that those who view your documents, presentations, workbooks and notebooks will see what you want them to see?

Office Web Apps provide professional-quality, high-fidelity viewing of your Word, Excel, PowerPoint, and OneNote files. Take advantage of the rich features in Microsoft Office on your desktop to create incredible content and then share those files online with great document fidelity and consistent formatting.<sup>3</sup>

---

<sup>2</sup> Word, Excel, and PowerPoint files can be viewed using Office Web Apps on many devices. Supported mobile viewers for Office Web Apps on SharePoint 2010 include Internet Explorer on Windows Mobile 5/6/6.1/6.5, Safari 4 on iPhone 3G and 3GS, BlackBerry 4.x and later, Nokia S60, NetFront 3.4, 3.5 and later, Opera Mobile 8.65 and later, Openwave 6.2, 7.0 and later. Supported mobile viewers for Office Web Apps on SkyDrive include Safari 4 on iPhone 3G and 3GS and Internet Explorer 7 on the upcoming Windows Phone 7. Viewing Excel files via a mobile browser is currently only available with Office Web Apps on SharePoint 2010.

<sup>3</sup> Microsoft Silverlight™ is not required—but is recommended for best results—when viewing PowerPoint and Word documents in Office Web Apps.



## Edit your content with confidence

When you create documents using Microsoft Office on your desktop, your files might include many types of rich content and advanced features to add impact to your important information—such as graphics, images and dynamic elements like tables of contents or cross-references.

Office Web Apps enable you to take the files that you create in Word, Excel, PowerPoint, and OneNote on your computer, make light edits on the web, and then open them again in the Microsoft Office applications on your desktop to seamlessly continue editing with access to all of the rich functionality you need.

## Work more easily with others

You and your team all use different versions of Microsoft Office, some on Microsoft Windows® and some on Mac. Wouldn't it be great if you had a common set of tools that you could all use to easily share and edit content?

Now you do. Office Web Apps make it simple to collaborate with people on different platforms and different Microsoft Office versions, and even those who don't have Microsoft Office on their computers. People who share access to your files can edit them easily and instantly from supported web browsers on their PC or Mac.<sup>4</sup>

## Get started right away

Your life is busy enough. How can a web-based solution save you time if you first have to spend that time learning to use it?

Fortunately, you don't. With Office Web Apps, you can work in a familiar environment, using some of the same editing and formatting features that you know and use every day in Microsoft Office.

---

<sup>4</sup> Supported browsers include Internet Explorer 7 or later for Windows, Safari 4 or later for Mac, and Firefox 3.5 or later for Windows, Mac, or Linux. Office Web Apps on Windows Live also support Chrome 3 and later for Windows.

# Office Web Apps: A Closer Look

## Never be without the tools you need

The next time a great idea strikes or a last-minute change occurs when you're on the go, take care of it on the spot. Office Web Apps give you the power to quickly and easily get things done when you want, where you want—from virtually any computer with an Internet connection.

Just click, and the document, workbook, presentation or notebook that you saved to a SharePoint 2010 site or a SkyDrive folder opens in your web browser. View your Word, Excel, PowerPoint and OneNote files in high fidelity or quickly make a change to the content. If you need to do a bit more, familiar formatting and editing tools are easily at-hand in all Office Web Apps, using the Ribbons that you see in Figure 3.

And, when you need to access additional features, it takes just one click from any Office Web App to open the file in the corresponding Microsoft Office program on your desktop.<sup>5</sup>

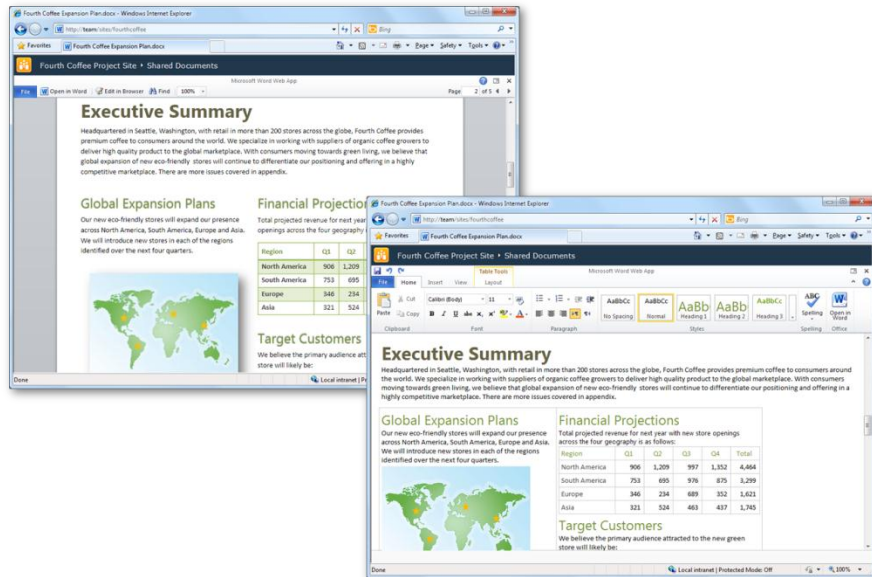


Figure 1: This document, created using Word 2010, is shown here when viewing (left) and editing (right) in Word Web App.

<sup>5</sup> The ability to open your file in the desktop application directly from Office Web Apps is available on computers running a supported browser as well as Office 2003 or a later version of Microsoft Office for Windows. This functionality will also be available on computers running a supported browser along with the forthcoming Office for Mac 2011.

## View in the browser

Save your Word, Excel, PowerPoint, and OneNote files directly from within your Office 2010 programs to a SharePoint 2010 site or to SkyDrive. Or, upload files from your computer using the tools in your SharePoint 2010 document library or SkyDrive folder. Then, click to open the file from its online location.

- When using Office Web Apps on SharePoint, Word, Excel, and PowerPoint files open immediately in view mode and OneNote notebooks open in edit mode.
- When using Office Web Apps on SkyDrive, you see a command bar from which you can click once to view or edit the file.

To edit any file that is open in an Office Web App in view mode, just click the **Edit in Browser** button that appears on the applicable command bar shown in Figure 2. When you use Office Web Apps on SkyDrive, the command bars shown here also include a Share button from which you can select others with whom to share the active file.

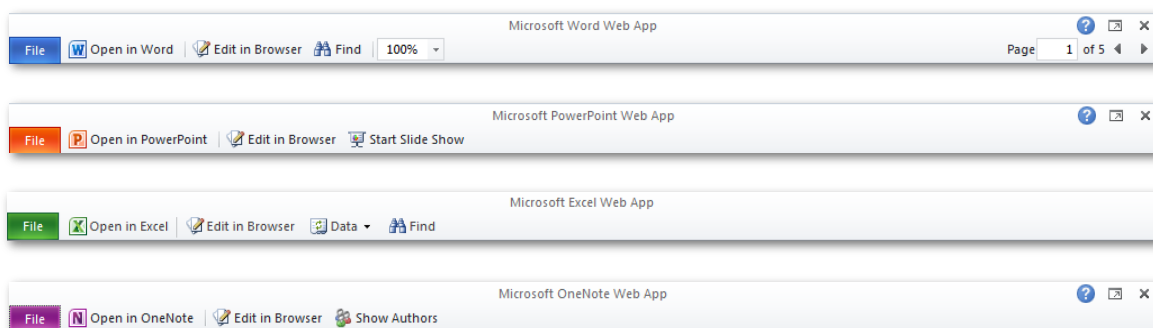


Figure 2: Get easy access to commands across Office Web Apps. See the applicable command bar shown here when your file is open in Office Web Apps view mode.

**Quick Tip:** When you receive Word, Excel, PowerPoint or OneNote files as attachments in Windows Live Hotmail, Office Web Apps enable you to view or edit the attachment directly from your inbox.<sup>6</sup>

<sup>6</sup> Silverlight is required for some Hotmail integration with Office Web Apps.



## Edit in the browser

Easily access many familiar formatting and editing features on the Ribbon, available across all Office Web Apps.

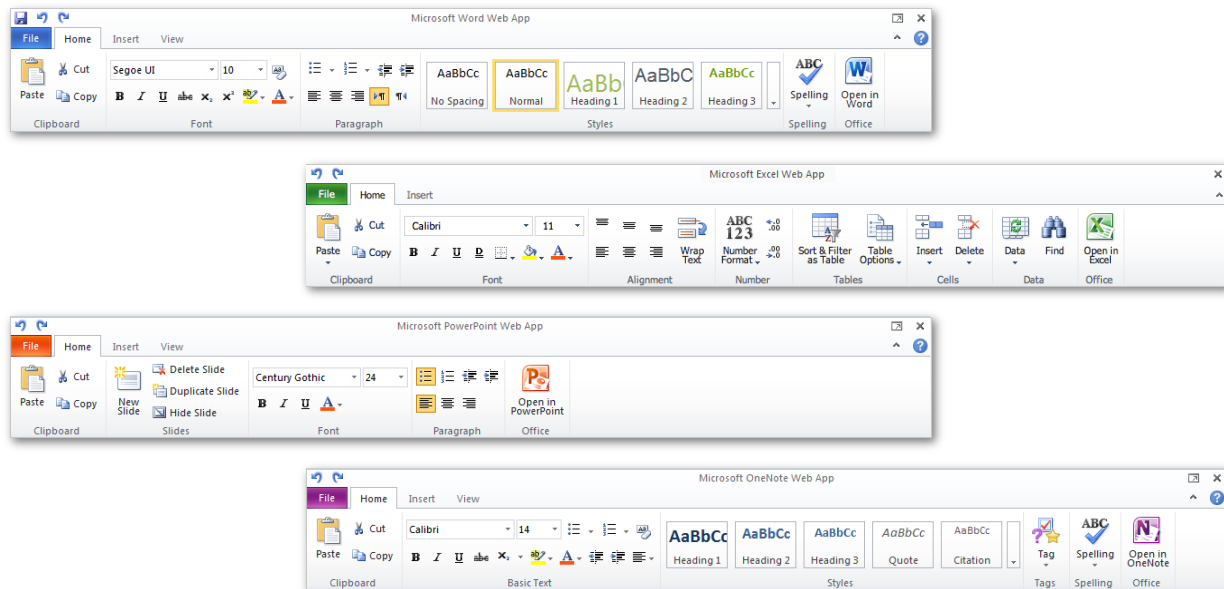


Figure 3: Find many familiar features on the Ribbon across Office Web Apps, including basic editing tools, font formatting, undo and redo commands, and much more.

As with the Ribbon in the Microsoft Office programs on your desktop, additional contextual tabs appear as needed when you select certain types of content—such as tables or pictures—to give you the right tools at just the right time.

## Edit in your desktop applications

Office Web Apps make it easy to access your content, view files in high-fidelity and quickly make updates from almost anywhere. And when you need to take advantage of the rich features in the Microsoft Office programs that are installed on your computer, you can do that directly from either the view or edit mode in any of the Office Web Apps. Just click the **Open in <Application>** button on the command bar in view mode (see Figure 2) or on the **Home** tab in edit mode (see Figure 3).



## What you see is what you get

You store your files online for easy access and ease of sharing. But you put a lot of effort into creating that content. So, when you use the rich functionality in the Microsoft Office programs on your computer to convey your important information with great-looking content, you want to know that anyone who views your file will see it the way you intended it to look.

When you view your files using Office Web Apps, your content always looks its best. From objects such as graphics and images, to formatting such as table borders, odd/even headers and text effects, viewers see the file in high-fidelity.

Office Web Apps also give you a powerful viewing experience that enables you to access and review your content with ease. Explore some of the commonly-used features that you can expect to find when viewing your files in Office Web Apps:

### Viewing in Word Web App

- When you click **Find** in Word Web App view mode, the **Find in Document** Pane opens. Search for text in the document and you see an excerpt from each search result in the pane along with automatic highlighting of search hits throughout the document. Click any result in the pane to instantly move to that location in the document.
- Copy document text right in Word Web App view mode. Just drag to select text and then use the keyboard shortcut CTRL+C (or the menu commands in your web browser) to copy.
- Browse pages or quickly move to the page you need while viewing your document. Just type the page number in the **Page** box on the command bar and then press Enter.
- Click the **File** tab on the command bar for the option to print the document.

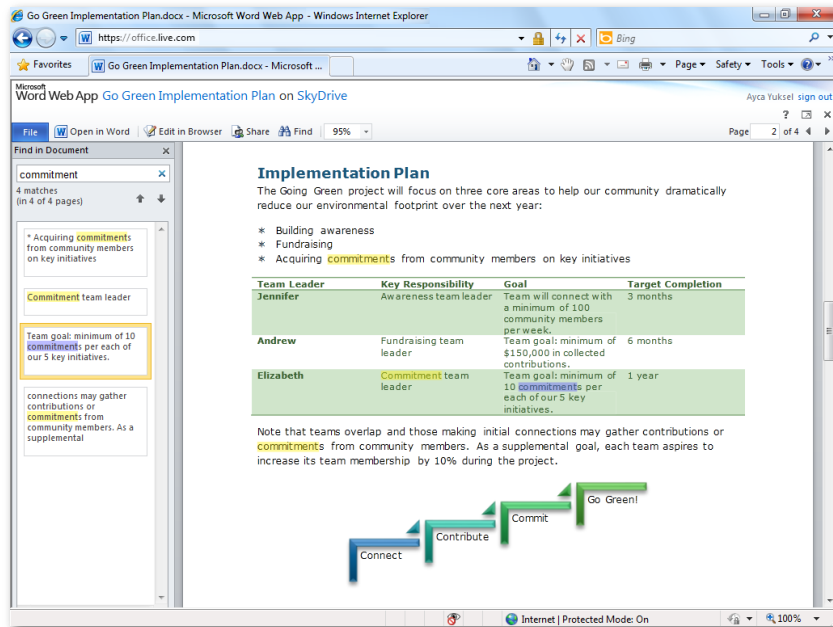


Figure 4: Find document text quickly with automatic hit highlighting in the document and a summary of results in the search pane.

**Quick Tip:** Easily zoom in or out to get a great view of your Word document every time. Click the Zoom Level dropdown list on the command bar to select presets ranging from 50% to 200%. Or, type a specific value and then press ENTER, for a custom zoom level between 33% and 400%.

## Viewing in PowerPoint Web App

- Browse slides or run your slide show from PowerPoint Web App view mode. When you click **Start Slide Show**, your presentation runs in full-screen. PowerPoint Web App even supports many of the animations that you can apply in PowerPoint 2010.
- Click the **Notes** button at the bottom of PowerPoint Web App view mode to view slide notes. To copy the notes, just drag to select note text and then use the keyboard shortcut CTRL+C or the Copy command in your web browser menu.
- Click the **File** tab on the command bar for the option to view your presentation as a text outline or to quickly print your slides.<sup>7</sup>

<sup>7</sup> For now, the ability to print slides from PowerPoint Web App is only available on Windows Live.

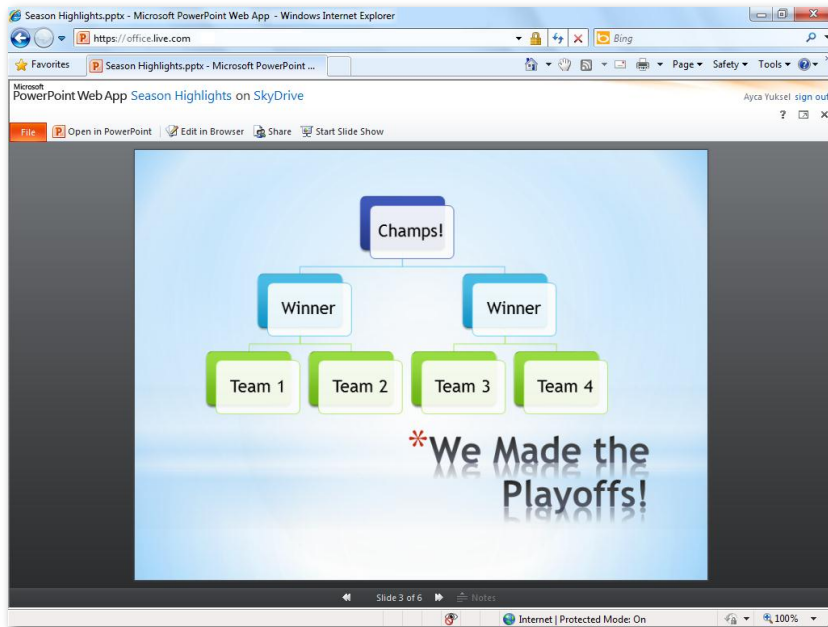


Figure 5:  
Browse slides,  
access slide  
notes, or run  
your slide  
show in high-  
fidelity.

**Quick Tip:** Use Broadcast Slide Show in PowerPoint 2010 to share your presentation live with a remote audience.<sup>8</sup> You give the presentation from PowerPoint on your desktop but viewers see it in their browser, via PowerPoint Web App. So they can watch your slide show in real-time and in high-fidelity, even if PowerPoint is not installed on their computer. Find Broadcast Slide Show in PowerPoint 2010 on the **Slide Show** tab, in the **Start Slide Show** group.

## Viewing in Excel Web App

- Browse your workbook easily using some of the same tools that you use in Excel on your desktop. Click a worksheet tab to view that sheet or click a row or column heading to select content.
- Sort and filter content in Excel tables and PivotTable views using the filter popup menus on table headings. If your worksheet contains a Slicer for your Excel 2010 PivotTable, you can select categories in the Slicer to filter table content as well, as shown in Figure 6.

<sup>8</sup> Requires SharePoint Foundation 2010 for business or a Windows Live ID for personal use. To broadcast via SharePoint 2010, Office Web Apps must be installed. Broadcasting via Windows Live is a free service that supports up to 50 attendees.

- Quickly update data for the entire workbook or just selected content. When you click the **Data** button on the command bar, you get options to refresh data connections for the workbook or just for a selected PivotTable, or to recalculate the workbook.<sup>9</sup>
- Click the **Find** button on the command bar to quickly search cell content for the active worksheet.
- Click the **File** tab on the command bar for the option to download a complete copy of your workbook or a snapshot that contains just data and formatting, or to reload the workbook from its online file location.

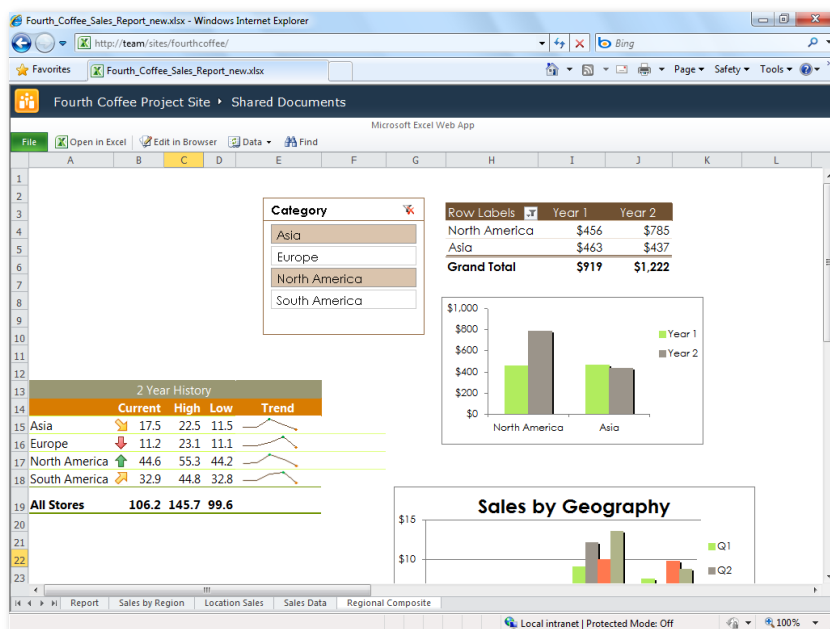


Figure 6: Sort and filter data, search for worksheet content, and update data connections.

## Viewing in OneNote Web App

OneNote notebooks open by default in edit mode unless the notebook is read-only. To open a notebook in view mode, on the OneNote Web App Ribbon, click the **View** tab and then click **Reading View**.

- When you open your notebook in OneNote Web App, your notebook is organized into sections and pages within each section, just as in OneNote on your desktop. However,

<sup>9</sup> If you use Office Web Apps on SharePoint 2010, refreshing data also refreshes available external data connections.

you see section and page tabs together in one pane at left, for an easy navigation experience ideally suited to the web browser. Click any section tab to expand or collapse the pages in that section.

- Click **Show Authors** on the command bar to see who made specific changes in your shared notebook, as you see in Figure 7.
- View previous page versions for pages in your shared notebooks. Just right-click a page tab for the **Show Versions** command.

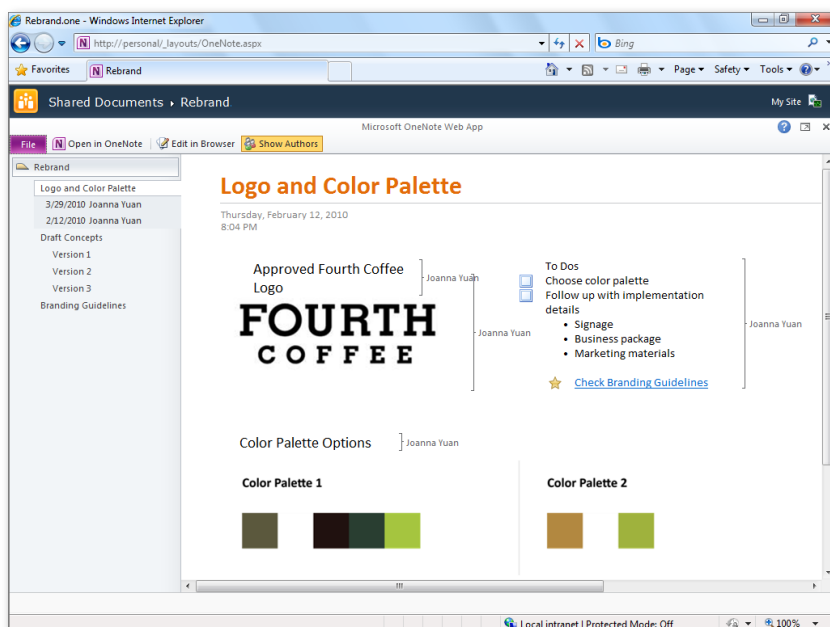


Figure 7: View changes by author directly on the page and access previous page versions in the navigation pane.

**Quick Tip:** From the view mode in any Office Web App, click the **Edit in Browser** button on the command bar to open the file for editing in the Web App. Or click the **Open in <Application>** button to open the file for editing in the Microsoft Office applications on your desktop. You can also open the file in the desktop application from the **File** tab on the left side of the command bar.



## View Microsoft Office files on your mobile device

Office Web Apps also give you the power to access and view Word, Excel, and PowerPoint files that you save to a SharePoint 2010 library or a SkyDrive folder directly from your mobile device.<sup>10</sup>

- View your rich Word document in high-fidelity by page or thumbnails, or quickly scroll through document text.
- View your PowerPoint slides or slide outline, and easily search for text in presentations.
- Refresh or find data in your Excel workbook, customize your view and even freeze panes for the active worksheet.

## Edit your content with confidence

When you use Word, Excel, PowerPoint, and OneNote on your desktop to create content, your files may include beautiful SmartArt graphics, Excel charts, rich mathematical equations, and many other powerful types of content that help express your ideas. You know that you can view that content in Office Web Apps. But what happens to that content when you and those you share with edit your file online?

Now you can take the rich documents that you create in the Microsoft Office programs on your computer, make light edits on the web using Office Web Apps, and then open them again in your desktop applications to seamlessly continue editing with access to all of the rich functionality you need.

## Preserve your content from desktop to web and back again

- When editing a file in Office Web Apps, you see placeholders for any content that can't display in the Web App edit mode, as shown in Figure 8. In this example, Word Web App shows you placeholders for SmartArt graphics, Excel charts, and content controls.
- Content displayed in placeholders is preserved intact and can be seen in the Web App view mode or when you next open the file in Microsoft Office on your desktop.

---

<sup>10</sup> See the Requirements\Disclosures section of this document for a list of supported mobile viewers.

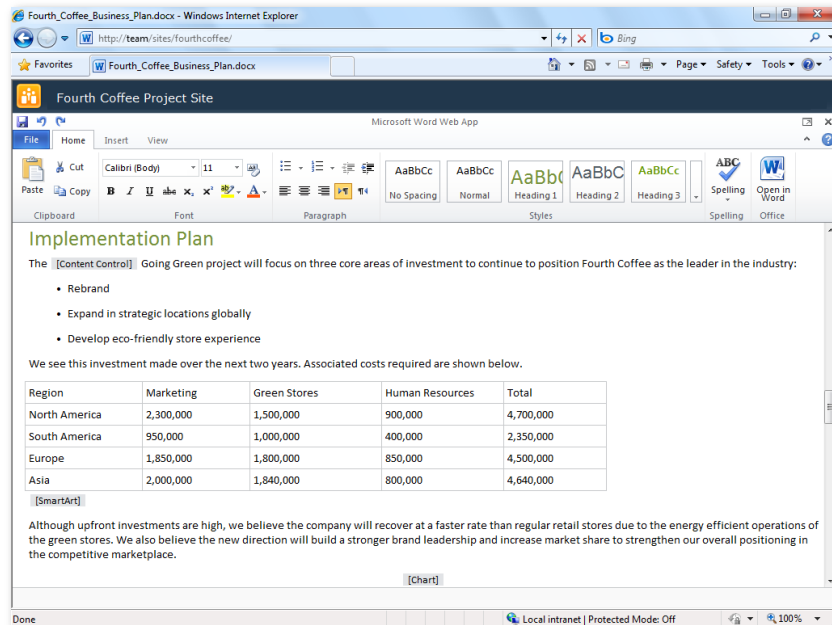


Figure 8:  
Office Web  
Apps in edit  
mode display  
placeholders  
to help you  
navigate your  
file and  
preserve your  
rich content.

### Quick Tips:

- Formatting that can't display in a Web App edit mode—such as some custom bullets and numbering—may display using default formatting while you edit. However, just switch to the Web App view mode, or open your file in the desktop application, and you see that your custom formatting is retained.
- Files that you edit in Office Web Apps retain functionality even when they contain features that you cannot access online. For example, if your Word document contains a dynamic table of contents or content controls bound to external data, that dynamic data is retained and the related functionality continues to be available when you open the document in Word after editing in Word Web App.

### A good companion always comes through in a pinch

So, what do you do if you're away from your computer and away from your desktop applications when you need to edit or format more than just text? Office Web Apps give you options for working with several common types of rich content, including tables, pictures and more.

- **Insert and edit tables in Word, Excel, and OneNote Web Apps.** On the **Insert** tab of the Ribbon, find the option to insert a table. When you do, Word and OneNote Web Apps display the **Table Tools Layout** contextual tab on the Ribbon from which you can easily edit basic table structure, such as adding and deleting rows and columns. When



you insert a table in Excel Web App, you automatically get an Excel table with banded row formatting and sort and filter capabilities.

- **Insert and work with pictures in PowerPoint, Word, and OneNote Web Apps.** On the **Insert** tab in Word and OneNote Web Apps, find the option to insert a picture from your files or from Office.com Clip Art. You can also select a picture in your document or notebook to access the **Picture Tools Format** contextual tab, where you can resize the picture or add alternative text.

In PowerPoint Web App, insert or replace pictures in any picture placeholder or content placeholder on your slides. Click the picture icon in the placeholder to add an image just as you do in PowerPoint on your desktop. When you select a picture on a slide, use the **Picture Tools Format** tab to easily replace the picture or to apply graphic effects from a gallery of picture styles.

- **Create, edit and format SmartArt graphics in PowerPoint Web App.** PowerPoint Web App gives you the power to add and edit SmartArt diagrams on the go. Insert a SmartArt graphic, such as an organization chart or process diagram, into any content placeholder in your presentation. You can click in a SmartArt graphic for the text pane where you can edit diagram text. Or add and delete shapes from the diagram just by adding or deleting bullets in the text pane. And, when you select a SmartArt graphic, the **SmartArt Tools** contextual tab appears automatically, where you can apply colors and formatting styles, and even change the diagram layout.

**Quick Tip:** A small number of features are not supported in documents for viewing and/or editing in Office Web Apps, such as comments and shapes in Excel and comments and tracked changes in Word. When your file contains these features, you will see a message when viewing the file that it contains unsupported features and the file will not open in the Web App in order to protect the file content. For Excel files, you may be able to use the **Save a Copy** command accessible from the **File** tab in Excel Web App view mode to create a copy of the file that can be edited online.

## Work more easily with others

You need to brainstorm with your team while traveling; update project data with a colleague on another continent; help your mom with a family photo album; or find an easy way to manage and share the little league soccer schedule with other team parents. However and wherever you collaborate, Office Web Apps gives you a simple, effective, and powerful way to work together



with others who are using both PC and Mac computers, whether they are using Windows Internet Explorer®, Safari, or Firefox browsers, and regardless of what version of Microsoft Office they have installed.

## Work together without waiting your turn

Office Web Apps redefine working together with co-authoring capabilities that enable you to edit the same Excel workbook or OneNote notebook at the same time as people in other locations.

- Co-authoring in Excel Web App is available in response to a popular request from Excel users. So, when you need to work together to update data, you can get it done faster and more easily than ever. Just open a workbook from your SharePoint 2010 or SkyDrive location for editing in Excel Web App. When others open the same file in Excel Web App while you are in it, you can all continue editing without interruption.

Changes update in near real-time, so you stay easily up-to-speed on everyone's edits as you work. And, you can quickly see who else is editing in the file with you at any time from the Status bar shown in Figure 9.

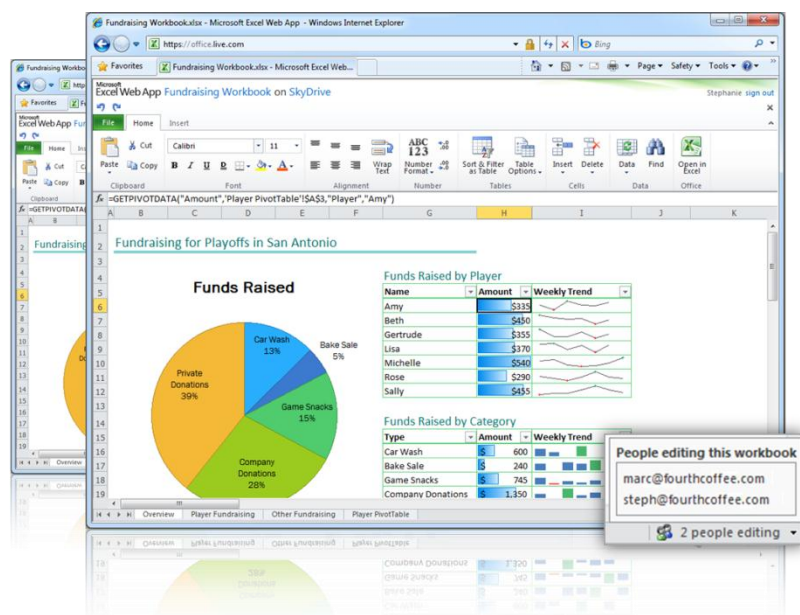


Figure 9: See who else is editing your workbook with you in Excel Web App.

- OneNote Web App enables you to edit the same shared notebook at the same time as other people using OneNote Web App as well as those using OneNote 2010. As people

open the notebook while you are in it, you all continue editing without interruption. Changes sync in near real-time, so you quickly see the content that others are adding to the notebook.

On the **View** tab of the Ribbon you can click **Show Authors** to see who made specific edits both during and at any time after a co-authoring session. Also on the **View** tab, click **Page Versions** to view, restore, or delete previous versions of the page. So, if someone else makes a change to content you needed, you can still access that content later.

**Quick Tip:** Co-authoring is also available in the Word 2010, PowerPoint 2010, and (via shared notebooks) OneNote 2010 desktop applications when you open your Office 2010 document, presentation, or notebook from a SharePoint 2010 site or a SkyDrive folder.

## Update content the moment it changes

The ability to edit your files online means that you and those you share with never have to wait to make a critical change. View and print the latest version of your document from virtually anywhere; get a last-minute press photo into your presentation before delivering your slide show; grab the new information that a colleague added to your notes; or update the data in your workbook the moment you receive it.

In fact, when you use Excel Web App to update data in your worksheets, all workbook content automatically updates just as if you were working in Excel on your desktop. The charts, conditional formatting, and incredible new Sparklines that you add to your workbooks using Excel 2010 refresh in an instant when workbook data changes in Excel Web App. Additionally, you can refresh data connections at any time with just a click when viewing or editing a workbook in Excel Web App.

### Quick Tips:

- Office Web Apps save files in the Office 2010 file formats. If you edit files online from versions of Microsoft Office earlier than 2007 for Windows or 2008 for Mac, Office Web Apps saves a copy of your file in the Office 2010 formats and leaves the original unchanged in your SharePoint 2010 library or SkyDrive folder. (Note: If you are running Office 2003 or Office XP on your desktop, install a free compatibility pack to open and edit Office 2010 documents.) For more information about file format support, see the [FAQ](#) section of this document.
- Organizations migrating to Office 2010 can use Office Web Apps on SharePoint 2010 to help simplify migration for everyone in the organization. Now, people whose computers have not yet been upgraded to Office 2010 can seamlessly collaborate on Office 2010 documents with their colleagues who have been migrated by using Office Web Apps.

## Get started right away

You already know that the Microsoft Office programs on your computer deliver powerful tools for creating and working with documents, presentations, workbooks and notebooks. You use those tools every day.

So when you want the flexibility of working with your files on the web, do you have to start from scratch and learn new programs? Fortunately, you don't.

With Office Web Apps, you can feel at home from wherever you need to be. Work in a familiar editing environment, using some of the same formatting and editing tools that you already know and use in your Microsoft Office programs.

### Fine-tune and format your content using tools you already know

- Get easy access to a consistent set of **font and paragraph formatting** tools across all Office Web Apps. Change the font of selected text, adjust font size and color, apply text formatting such as bold, italic, and underline, set paragraph alignment, and more.
- Use **automatic spell-checking** and **AutoCorrect as you type** in Word Web App and OneNote Web App, and **apply styles** to your text in those applications as well.
- Take advantage of up to nine levels of **automatic bulleted and numbered lists** in Word, PowerPoint, and OneNote Web Apps, and use the familiar **Increase\Decrease**

**Indent (List Level)** buttons in the Paragraph group on the Home tab to change the outline level for the current paragraph.

- Easily **work with slides** in PowerPoint Web App. Insert new slides with your choice of layout. You can also duplicate, delete, or hide slides with just a click.
- Create formulas in Excel Web App using **IntelliSense (AutoComplete) lists for functions**. You can also use well-known **cell formatting** features such as wrapping text within cells, changing number format, and applying cell borders and shading.

**Quick Tip:** Find many familiar features exactly where you'd expect them to be as you explore Office Web Apps. For example, insert a hyperlink from the **Insert** tab in any Office Web App. Or right-click the red underscore that indicates a spelling error while working in Word or OneNote Web Apps for a selection of spelling correction options.

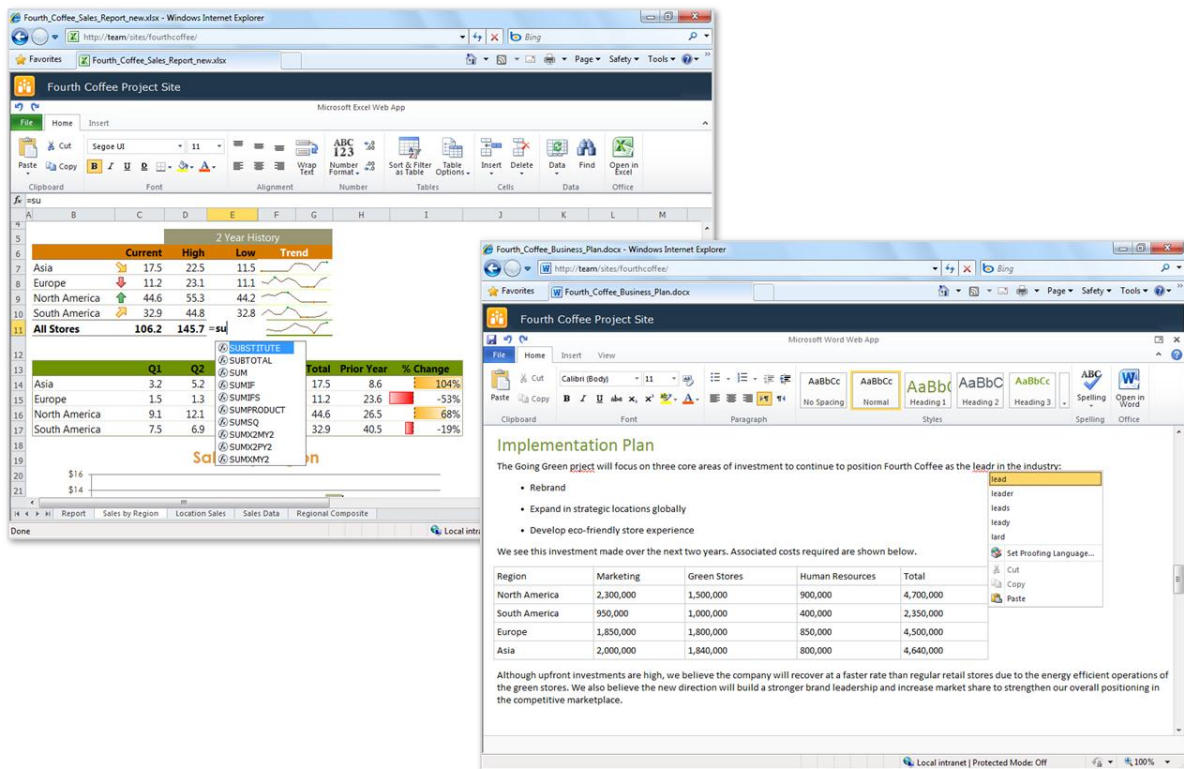


Figure 10: Use familiar features such as automatic spell-checking in Word Web App and IntelliSense lists for functions in Excel Web App.

# Office Web Apps: Features by Application



## Word Web App

Helping a friend update her resume? Need to print a document on the go? Word Web App makes it easy with familiar tools that you'll recognize from Word such as AutoCorrect, spell-checking as you type, font and paragraph formatting, and tables. And, with just one click, you can seamlessly continue editing your document in Word on your desktop.

### Viewing in Word Web App

Features and Benefits	Description	Where to Find
Print	Print the active document.	<ul style="list-style-type: none"><li>On the command bar, click <b>File</b>, and then click <b>Print</b>.</li></ul>
Find	Search for document text using Word Web App in view mode. See automatic highlighting of search hits in the document along with a pane showing a summary of search results. Click any result in the pane to move to that point in the document.	<ul style="list-style-type: none"><li>On the command bar, click <b>Find</b>.</li></ul>
Zoom	Select zoom presets ranging from 50 to 200 percent, as well as Full Page and Page Width options. Or type a custom zoom level between 33 and 400 percent.	<ul style="list-style-type: none"><li>Find the zoom level dropdown list on the command bar.</li></ul> <p><b>Note:</b> Microsoft Silverlight is recommended for the best viewing fidelity when changing zoom level.</p>
Navigation	When you open a document in Word Web App view mode, you see the total number of pages in the document and can move through the document by page or type a page number to immediately to move the page you need.	<ul style="list-style-type: none"><li>Find the page count and page navigation buttons on the right side of the command bar.</li></ul>



Features and Benefits	Description	Where to Find
Open in Word	It takes just one click to continue editing your document in Word on your desktop.	<ul style="list-style-type: none"> <li>In Word Web App view mode, find <b>Open in Word</b> on the command bar or under the <b>File</b> tab.</li> </ul> <p><b>Note:</b> When editing in Word Web App, find this option on the <b>Home</b> tab, in the <b>Office</b> group.</p>
Edit in Web App	When viewing your document in Word Web App view mode, open the document for editing in the browser with a single click.	<ul style="list-style-type: none"> <li>On the command bar, click <b>Edit in Browser</b>.</li> </ul>
Access and view files on your mobile device	When you save your Word documents to a SharePoint 2010 site or a SkyDrive folder, you can access and view those files using Office Web Apps on your mobile device.	<ul style="list-style-type: none"> <li>Use the browser on your mobile device to navigate to your SharePoint site or SkyDrive folder and then click the name of the file you need to open it for viewing in the browser.</li> </ul>

## Editing in Word Web App

Features and Benefits	Description	Where to Find
Save	Save changes to your document when editing in Word Web App.	<ul style="list-style-type: none"> <li>Click the <b>Save</b> button that appears above the <b>File</b> tab. You can also find the save command under the File tab. Or, use the CTRL+S keyboard shortcut that you know from Word.</li> </ul>
View in Web App	When editing your document in Word Web App, it's easy to switch views so that you can see your rich document in high fidelity at any time.	<ul style="list-style-type: none"> <li>Save your document to preserve your changes. Then, on the <b>View</b> tab of the Ribbon, click <b>Reading View</b>.</li> </ul>

Features and Benefits	Description	Where to Find
Clipboard	<p>Cut, copy, and paste content in your document. You can copy and paste text between Web Apps as well as between Office Web Apps and the Microsoft Office programs on your computer.</p>	<ul style="list-style-type: none"> <li>On the <b>Home</b> tab, in the <b>Clipboard</b> group, find <b>Cut</b>, <b>Copy</b>, and <b>Paste</b> commands.</li> </ul> <p><b>Note:</b> These commands are also available from the shortcut menu when you right-click selected content.</p>
Undo and Redo	<p>Undo or redo recent actions in the active document.</p> <p><b>Note:</b> You can undo an infinite number of your changes to the active document made during your current editing session in Word Web App editor, until you save the document or insert a picture.</p>	<ul style="list-style-type: none"> <li>Click the <b>Undo</b> and <b>Redo</b> buttons that appear above the <b>File</b> tab. Or, use the CTRL+Z (undo) and CTRL+Y (redo) keyboard shortcuts that you know from Word.</li> </ul>
Font formatting	<p>Apply font, font size, and several font formatting attributes including bold, italic, underline, superscript and more. You can also highlight text, change font color, and clear formatting for selected text.</p> <p><b>Note:</b> Your document theme formatting is available to format text in Word Web App. Find the active theme fonts at the top of the Fonts gallery and theme colors in the Font Color gallery.</p>	<ul style="list-style-type: none"> <li>On the <b>Home</b> tab, find all font formatting options in the <b>Font</b> group.</li> </ul>
Paragraph formatting	<p>Change paragraph alignment, increase or decrease the indent from left margin, or change text direction from left to right.</p>	<ul style="list-style-type: none"> <li>On the <b>Home</b> tab, find paragraph formatting options in the <b>Paragraph</b> group.</li> </ul>



Features and Benefits	Description	Where to Find
Bullets and Numbering	Apply your choice of three bullet styles or five numbering styles. You can also use the Increase Indent and Decrease Indent buttons to change list level for existing bulleted and numbered lists in your document as well as those you create in Word Web App.	<ul style="list-style-type: none"><li>On the <b>Home</b> tab, find bullets, numbering, and the options to change list level in the <b>Paragraph</b> group.</li></ul> <p><b>Note:</b> Custom bullet and numbering formats that you apply in Word on your desktop are retained in your document when edited in Word Web App. To view your custom number formats in the document, open the document in Word Web App view mode.</p>
Styles	The paragraph and character styles that are saved in your document are available to apply to text in Word Web App.	<ul style="list-style-type: none"><li>On the <b>Home</b> tab, in the <b>Styles</b> group, find styles that are included in your document Quick Style list in the Styles gallery.</li><li>Or, click to expand that gallery for the <b>Apply Styles</b> option, from which you can access all paragraph and character styles in the document.</li></ul> <p><b>Note:</b> You can also use familiar keyboard shortcut keys including CTRL+ALT+1,2,3 to apply Heading styles and CTRL+SHIFT+N to apply Normal style.</p>

Features and Benefits	Description	Where to Find
Proofing tools	<p>Word Web App automatically checks spelling as you type and applies a wavy red underline to misspelled text. You also get common AutoCorrect actions as you type, such as correcting common misspellings or converting characters to symbols.</p> <p>Additionally, you can set the proofing language or turn off spell-checking for selected text.</p>	<ul style="list-style-type: none"><li>On the <b>Home</b> tab, in the <b>Spelling</b> group, click <b>Spelling</b> to move to the next spelling error in the document. When you do, a dropdown list of correction options appears. You can also right-click a word that is identified as misspelled to access correction options.</li><li>On the <b>Home</b> tab, click the arrow beneath the <b>Spelling</b> button for <b>Set Proofing Language</b>, where you can change the proofing language or disable spell-checking for a selection.</li></ul>
Tables	<p>Insert a table, edit table text, and easily edit basic table structure such as adding or deleting rows and columns.</p>	<ul style="list-style-type: none"><li>To insert a table, on the <b>Insert</b> tab, in the <b>Tables</b> group, click <b>Table</b>. Then, move your mouse pointer across the grid to select the number of columns and rows you need and click to insert.</li><li>To edit table structure, click in a table. When you do, the <b>Table Tools Layout</b> tab appears automatically, providing options to select, delete, and insert table elements and to align content in cells. Or, right-click in a table for table editing options.</li></ul>
Pictures	<p>Insert a picture from your files or from Office.com Clip Art. You can also resize pictures and add alternative text.</p>	<ul style="list-style-type: none"><li>To insert a picture, on the <b>Insert</b> tab, in the <b>Picture</b> group, click <b>Picture</b> or <b>Clip Art</b>.</li><li>To resize a picture or add alternative text, select the picture. The <b>Picture Tools Format</b> tab provides these options whenever a picture is selected.</li></ul>

Features and Benefits	Description	Where to Find
Hyperlinks	Insert a hyperlink to a web address or apply a link to selected text.	<ul style="list-style-type: none"> <li>On the <b>Insert</b> tab, in the <b>Links</b> group, click <b>Link</b>.</li> </ul>
Placeholders	Word Web App in edit mode automatically displays placeholders for features it is unable to display, such as SmartArt graphics, Excel charts and content controls. Placeholders preserve the layout and rich content in your documents and help you navigate a file when making edits in Word Web App.	<ul style="list-style-type: none"> <li>Placeholders for objects that cannot be displayed appear automatically.</li> <li>To view the full content that is shown as a placeholder in Word Web App edit mode, on the <b>View</b> tab, click <b>Reading View</b>. Or, on the <b>Home</b> tab, click <b>Open in Word</b>.</li> </ul>



## Excel Web App

With Excel Web App, anything from updating a budget with team members to tracking your exercise routine on the road is a snap. You can simultaneously edit a spreadsheet with others across the hall or across time zones. See charts, conditional formatting, and even Sparklines update as you sort columns and change formulas. Plus, you'll enjoy many of the same features that you know from Excel, such as IntelliSense lists that appear as you begin to type a function name.

### Viewing in Excel Web App

Features and Benefits	Description	Where to Find
Refresh Data	<p>Refresh data connections for the entire workbook or a selected PivotTable. Or recalculate the workbook.</p> <p><b>Note:</b> When you use Excel Web App on SharePoint 2010, refreshing data also refreshes available external connections in the active workbook.</p>	<ul style="list-style-type: none"> <li>On the command bar, click <b>Data</b>.</li> </ul> <p><b>Note:</b> When editing in Excel Web App, find these options on the <b>Home</b> tab, in the <b>Data</b> group.</p>

Features and Benefits	Description	Where to Find
Find	Find cell content in the active worksheet. An easy-to-use dialog box gives you the option to search up or down from your current selection in the worksheet.	<ul style="list-style-type: none"> <li>On the command bar, click <b>Find</b>.</li> </ul> <p><b>Note:</b> When editing in Excel Web App, access this command on the <b>Home</b> tab, in the <b>Data</b> group.</p>
Navigation	Click a sheet tab to move to a different worksheet. Click row or column headings to select that row or column, and use the arrow keys to move through the worksheet.	<ul style="list-style-type: none"> <li>Access sheet tabs as well as row and column headings when viewing or editing a workbook in Excel Web App.</li> </ul>
Open in Excel	It takes just one click to continue editing your workbook in Excel on your desktop.	<ul style="list-style-type: none"> <li>In Excel Web App view mode, find <b>Open in Excel</b> on the command bar or under the <b>File</b> tab.</li> </ul> <p><b>Note:</b> In Excel Web App edit mode, access this command on the <b>Home</b> tab, in the <b>Office</b> group.</p>
Edit in Web App	When viewing your workbook in Excel Web App view mode, open the workbook for editing in the browser with a single click.	<ul style="list-style-type: none"> <li>On the command bar, click <b>Edit in Browser</b>.</li> </ul>
Sort and Filter data	Sort and filter data in Excel tables and PivotTable views.	<ul style="list-style-type: none"> <li>Click the AutoFilter arrows on headings in a table or PivotTable for sort and filter options.</li> </ul> <p><b>Note:</b> This feature is also available when the workbook is open for editing in Excel Web App.</p>
Save or Download a Copy	From the File tab in Excel Web App view or edit mode, you can create a copy of the workbook, download a complete copy, or download just a snapshot—a file containing only the values and formatting from your workbook.	<ul style="list-style-type: none"> <li>In Excel Web App view mode, click the <b>File</b> tab on the command bar.</li> <li>In Excel Web App edit mode, click the <b>File</b> tab on the Ribbon.</li> </ul>

Access and view files on your mobile device

When you save your Excel workbooks to a SharePoint 2010 site, you can access and view those files using Office Web Apps on your mobile device.

- Use the browser on your mobile device to navigate to your SharePoint site and then click the name of the file you need to open it for viewing in the browser.

## Editing in Excel Web App

Features and Benefits	Description	Where to Find
Co-authoring	Edit the same workbook at the same time with people in other locations.	<ul style="list-style-type: none"> <li>• Open a workbook for editing in Excel Web App. When someone else opens the same workbook for editing in Excel Web App, simultaneous editing begins automatically.</li> <li>• View who else is editing the file with you on the right side of the Status bar at the bottom of the screen.</li> </ul> <p><b>Note:</b> See changes that others make automatically. Changes sync in near real-time.</p>
Save	When you open a workbook for editing in Excel Web App, the workbook is automatically saved as you work.	<ul style="list-style-type: none"> <li>• Saving is automatic in Excel Web App.</li> </ul>
Clipboard	Cut, copy, and paste content in your workbook. You can copy and paste text between Web Apps as well as between Office Web Apps and the Microsoft Office programs on your computer.	<ul style="list-style-type: none"> <li>• On the <b>Home</b> tab, in the <b>Clipboard</b> group, find <b>Cut</b>, <b>Copy</b>, and <b>Paste</b> commands.</li> </ul> <p><b>Note:</b> You can also use the CTRL+C (copy), CTRL+X (cut), and CTRL+V (paste) keyboard shortcuts.</p>
Undo and Redo	Undo or redo up to the last 25 actions taken during your current editing session in the active workbook.	<ul style="list-style-type: none"> <li>• Click the <b>Undo</b> and <b>Redo</b> buttons that appear above the <b>File</b> tab. Or, use the CTRL+Z (undo) and CTRL+Y (redo) keyboard shortcuts that you know from Excel.</li> </ul>

Features and Benefits	Description	Where to Find
Formula Bar	Just as you do in Excel on your desktop, edit text and formulas in your cells either directly in the worksheet cell or in the Formula Bar. Use the Formula Bar to easily see and edit cell formulas when the result is displayed in the selected cell.	<ul style="list-style-type: none"> <li>Find the Formula Bar directly below the Ribbon.</li> </ul>
Font and cell formatting	<p>Apply font, font size, and several font formatting attributes including bold, italic, underline, and double underline. Also apply cell borders and shading.</p> <p><b>Note:</b> Your active theme colors are available for text and cell fill in Excel Web App. Find the theme colors in the Font Color and Fill Color galleries.</p>	<ul style="list-style-type: none"> <li>On the <b>Home</b> tab, find all font and cell formatting options in the <b>Font</b> group.</li> </ul>
Alignment	Change horizontal or vertical cell alignment, or wrap text in cells.	<ul style="list-style-type: none"> <li>On the <b>Home</b> tab, find alignment and text wrapping options in the <b>Alignment</b> group.</li> </ul>
Number formatting	Select from 11 popular formats, such as number, currency, percent, date, and text. You can also increase and decrease the number of decimal places in your number format.	<ul style="list-style-type: none"> <li>On the <b>Home</b> tab, find number formatting options in the <b>Number</b> group.</li> </ul>
Functions	Use many of the same functions that you know from Excel. When you begin to type a function name, you see an IntelliSense list of available functions.	<ul style="list-style-type: none"> <li>Click in a worksheet cell. The IntelliSense list for functions appears after you type the equal sign followed by at least the first letter of the function name you need.</li> </ul>

Features and Benefits	Description	Where to Find
Tables	<p>Create an Excel table with sort and filter capabilities, banded rows, and formatting that automatically coordinates with your active workbook theme. You can also add a header row or total row to your table.</p> <p>As in Excel, when you type in the row directly below the table range, the table automatically expands. Additionally, when you add a formula in a cell immediately to the right of any table row, Excel Web App creates a calculated column, expanding the table and adding that formula to all other data rows in your table.</p>	<ul style="list-style-type: none"> <li>• Select the cells in the worksheet to use as your table range. Then, on the <b>Home</b> tab, in the <b>Tables</b> group, click <b>Sort &amp; Filter as Table</b>. Or, on the <b>Insert</b> tab, click <b>Table</b>.</li> <li>• For header row and totals row settings, on the <b>Home</b> tab, in the <b>Tables</b> group, click <b>Table Options</b>.</li> </ul>
Edit worksheet structure	Insert and delete cells, rows, and columns on your worksheet.	<ul style="list-style-type: none"> <li>• On the <b>Home</b> tab, in the <b>Cells</b> group, find <b>Insert</b> and <b>Delete</b> options.</li> </ul>
Hyperlinks	Insert a hyperlink to a web address or apply a link to selected text.	<ul style="list-style-type: none"> <li>• On the <b>Insert</b> tab, in the <b>Links</b> group, click <b>Link</b>.</li> </ul>



## PowerPoint Web App

Deliver your presentation anytime, from virtually anywhere, with PowerPoint Web App. Whether you're on the road or just away from your computer, you can make last-minute edits and run your slide show right from a web browser. With familiar features that you know from PowerPoint, you can add or delete slides, change font and paragraph formatting, apply a slide layout, or replace a picture. You can even use SmartArt graphics to build a diagram or organization chart on the go, as easily as typing a bulleted list.

### Viewing in PowerPoint Web App

Features and Benefits	Description	Where to Find
View and copy slide notes	View the notes pane for your slide with just a click. Or copy note text directly from PowerPoint Web App view mode.	<ul style="list-style-type: none"><li>Click the <b>Notes</b> button on the Status bar in PowerPoint Web App view mode. Drag to select notes and use the CTRL+C keyboard shortcut to copy.</li></ul>
Run slide show	Run your slide show in the browser in high-fidelity. PowerPoint Web App even supports many of the animations that you can apply in PowerPoint on your desktop.	<ul style="list-style-type: none"><li>On the command bar, click <b>Start Slide Show</b>.</li></ul> <p><b>Note:</b> To run your slide show when you are editing your presentation in PowerPoint Web App, on the <b>View</b> tab click <b>Slide Show</b>.</p>
Print Slides	Print the active presentation. <b>Note:</b> For now, this feature is only available on SkyDrive.	<ul style="list-style-type: none"><li>On the command bar in view mode (or the Ribbon in edit mode) click <b>File</b> and then click <b>Print</b>.</li></ul>
Navigation	Use Previous Slide and Next Slide buttons to easily browse your slides. Or, click the slide number indicator to see a list of slides and move directly to the one you need.	<ul style="list-style-type: none"><li>Find Previous Slide, Next Slide, and slide number indicators in the center of the Status bar at the bottom of PowerPoint Web App when in view mode.</li></ul>



Features and Benefits	Description	Where to Find
Broadcast slide show	Broadcast slide show is a new feature of PowerPoint 2010 that uses PowerPoint Web App to run your slide show live for a remote audience.	<ul style="list-style-type: none"> <li>PowerPoint 2010 is required to broadcast your slide show to a remote audience via PowerPoint Web App.</li> <li>Viewers watch your live presentation via PowerPoint Web App, whether or not they have PowerPoint installed.</li> </ul> <p><b>Note:</b> Viewing the broadcast requires an Internet connection and a supported Internet Explorer, Firefox, or Safari browser.</p>
Outline View	View, copy, or print the text outline of your slide titles and text.	<ul style="list-style-type: none"> <li>On the command bar, click <b>File</b> and then click <b>Outline View</b>.</li> <li>To copy or print outline text, drag to select text and then right-click for your browser's copy and print options.</li> </ul>
Open in PowerPoint	It takes just one click to continue editing your presentation in PowerPoint on your desktop.	<ul style="list-style-type: none"> <li>In PowerPoint Web App view mode, find <b>Open in PowerPoint</b> on the command bar or under the <b>File</b> tab.</li> </ul> <p><b>Note:</b> In PowerPoint Web App edit mode, find this command on the <b>Home</b> tab, in the <b>Office</b> group.</p>
Edit in Web App	When viewing your presentation in PowerPoint Web App view mode, open the presentation for editing in the browser with a single click.	<ul style="list-style-type: none"> <li>On the command bar, click <b>Edit in Browser</b>.</li> </ul>
Access and view files on your mobile device	When you save your PowerPoint presentations to a SharePoint 2010 site or a SkyDrive folder, you can access and view those files using Office Web Apps on your mobile device.	<ul style="list-style-type: none"> <li>Use the browser on your mobile device to navigate to your SharePoint site or SkyDrive folder and then click the name of the file you need to open it for viewing in the browser.</li> </ul>

## Editing in PowerPoint Web App

Features and Benefits	Description	Where to Find
Save	When you open a presentation for editing in PowerPoint Web App, the presentation is automatically saved as you work.	<ul style="list-style-type: none"> <li>Saving is automatic in PowerPoint Web App.</li> </ul>
View and edit slide notes	The default editing view in PowerPoint Web App displays the notes pane at the bottom of the screen. Just click in the pane to add or edit slide notes.	<ul style="list-style-type: none"> <li>To show or hide the Notes pane, on the <b>View</b> tab, click <b>Notes</b>.</li> </ul>
View in Web App	When editing your presentation in PowerPoint Web App, it's easy to switch views to review your slides in the Web App view mode.	<ul style="list-style-type: none"> <li>On the <b>View</b> tab of the Ribbon, click <b>Reading View</b>.</li> </ul>
Clipboard	Cut, copy, and paste content in your presentation. You can copy and paste text between Web Apps as well as between Office Web Apps and the Microsoft Office programs on your computer.	<ul style="list-style-type: none"> <li>On the <b>Home</b> tab, in the <b>Clipboard</b> group, find <b>Cut</b>, <b>Copy</b>, and <b>Paste</b> commands.</li> </ul> <p><b>Note:</b> You can also use the CTRL+C (copy), CTRL+X (cut), and CTRL+V (paste) keyboard shortcuts.</p>
Undo and Redo	<p>Undo or redo an infinite number of your recent actions during the current editing session in the active presentation.</p> <p><b>Note:</b> If the editing session times out or you switch to Reading View for more than 30 seconds, your undo history is reset.</p>	<ul style="list-style-type: none"> <li>Click the <b>Undo</b> and <b>Redo</b> buttons that appear above the <b>File</b> tab. Or, use the CTRL+Z (undo) and CTRL+Y (redo) keyboard shortcuts that you know from PowerPoint.</li> </ul>
Create and manage slides	Insert a new slide with your choice of any slide layout that's available in your active presentation. You can also delete, duplicate or hide slides with just a click.	<ul style="list-style-type: none"> <li>On the <b>Home</b> tab, find all slide management options in the <b>Slides</b> group.</li> </ul>

Features and Benefits	Description	Where to Find
Font formatting	<p>Apply font, font size, and font color, as well as bold, italic, and underline attributes.</p> <p><b>Note:</b> Your active theme colors are available to text in PowerPoint Web App. Find the active theme colors in the Font Color gallery.</p>	<ul style="list-style-type: none"> <li>On the <b>Home</b> tab, find all font formatting options in the <b>Font</b> group.</li> </ul>
Alignment, bullets and numbering	<p>Change paragraph alignment, apply bullets or numbering, and change the level of bulleted or numbered text.</p>	<ul style="list-style-type: none"> <li>On the <b>Home</b> tab, find alignment and bullets and numbering options in the <b>Paragraph</b> group.</li> <li>You can also use the TAB and SHIFT+TAB keyboard shortcuts at the beginning of a bulleted or numbered paragraph to change list level.</li> </ul> <p><b>Note:</b> When you click in a bulleted or numbered text box to edit it, your bullet and numbering styles appear with default formatting while editing. Just click out of the placeholder when done to see your custom bullet or number formatting.</p>
Pictures	<p>Insert a picture into any picture or content placeholder on your slides. You can also replace an existing picture and apply picture styles.</p>	<ul style="list-style-type: none"> <li>To insert a picture, click the picture icon in an empty placeholder. Or, on the <b>Insert</b> tab, click <b>Picture</b>.</li> <li>When you select a picture, the <b>Picture Tools Format</b> tab provides the options to replace the picture or apply a picture style.</li> </ul> <p><b>Note:</b> The Picture option on the Insert tab is available whenever the active slide contains an available picture placeholder.</p>

Features and Benefits	Description	Where to Find
SmartArt	Add, edit, and format SmartArt graphics in your presentation. SmartArt graphics enable you to create professional-quality diagrams—such as organization charts and radial diagrams—just by typing a bulleted list.	<ul style="list-style-type: none"><li>To insert a SmartArt graphic, click the SmartArt icon in an empty content placeholder. Or, on the <b>Insert</b> tab, click <b>SmartArt</b> and then click to select a layout.</li><li>When you select a SmartArt graphic, the <b>SmartArt Tools</b> tab enables you to apply formatting styles, colors, and even change the diagram layout.</li><li>Click in a SmartArt graphic and the SmartArt text pane appears automatically. Edit diagram text in this pane. Or, add and delete bullets in this pane to add or delete shapes from your graphic.</li></ul> <p><b>Note:</b> The SmartArt option on the Insert tab is available whenever the active slide contains an available content placeholder.</p>
Hyperlinks	Insert a hyperlink to a web address or apply a link to selected text.	<ul style="list-style-type: none"><li>On the <b>Insert</b> tab, in the <b>Links</b> group, click <b>Link</b>.</li></ul>



## OneNote Web App

Whether you're planning a project, organizing your team's research notes, or cramming for an exam with your study group, OneNote Web App gives you one convenient place to store and share all of your ideas and information. Simultaneously edit the same notebook with others who are using OneNote Web App or OneNote 2010. Keep your information easily organized using some of the same features that you find in OneNote on your PC, such as AutoCorrect, spell-checking, tags, text styles, and pictures. And because OneNote Web App lets you see who made specific changes in your shared notebooks, and even access previous versions of notebook pages, you can always maintain control over your document.

### Viewing in OneNote Web App

Features and Benefits	Description	Where to Find
Show Authors	Instantly see who made specific changes in your notebook.	<ul style="list-style-type: none"><li>On the command bar, click <b>Show Authors</b>.</li></ul> <p><b>Note:</b> When editing in OneNote Web App, this feature is available on the <b>View</b> tab.</p>
View previous page versions	View previous versions of notebook pages. A page version is saved when someone makes changes in a shared notebook.	<ul style="list-style-type: none"><li>To view previous page versions, right-click the page tab and then click <b>Show Versions</b>.</li></ul> <p><b>Note:</b> To restore or delete previous page versions, open the notebook for editing in OneNote Web App.</p>
Navigation	Click a section name to view all pages in that section. Then just click a page tab to view the page.	<ul style="list-style-type: none"><li>A navigation pane appears at the left of the page when viewing or editing in OneNote Web App, displaying the sections and pages of your active notebook.</li></ul>

Features and Benefits	Description	Where to Find
Open in OneNote	It takes just one click to continue editing your notebook in OneNote on your desktop.	<ul style="list-style-type: none"> <li>In OneNote Web App view mode, find <b>Open in OneNote</b> on the command bar or under the <b>File</b> tab.</li> </ul> <p><b>Note:</b> When editing your notebook in OneNote Web App, find this command on the <b>Home</b> tab, in the <b>Office</b> group.</p>
Edit in Web App	When editing your notebook in OneNote Web App, it's easy to switch between edit and view modes.	<ul style="list-style-type: none"> <li>On the command bar, click <b>Edit in Browser</b>.</li> </ul>

## Editing in OneNote Web App

Features and Benefits	Description	Where to Find
Save	Saving your edits in OneNote Web App is automatic, just as in OneNote on your desktop.	<ul style="list-style-type: none"> <li>Your changes are automatically saved as you edit in OneNote Web App.</li> </ul>
View in Web App	When editing your notebook in OneNote Web App, it's easy to switch between edit and view modes.	<ul style="list-style-type: none"> <li>On the <b>View</b> tab of the Ribbon, click <b>Reading View</b>.</li> </ul>
Co-authoring for shared notebooks	Edit the same notebook at the same time with people in other locations who are using either OneNote Web App or OneNote 2010.	<ul style="list-style-type: none"> <li>Open a notebook for editing in OneNote Web App. When someone else opens the same notebook for editing in OneNote Web App or OneNote 2010, simultaneous editing begins automatically.</li> </ul> <p><b>Note:</b> See changes that others make automatically. Changes sync in near real-time.</p>

Features and Benefits	Description	Where to Find
Clipboard	Cut, copy, and paste content in your notebook. You can copy and paste text between Web Apps as well as between Office Web Apps and the Microsoft Office programs on your computer.	<ul style="list-style-type: none"> <li>On the <b>Home</b> tab, in the <b>Clipboard</b> group, find Cut, Copy, and Paste commands.</li> </ul> <p><b>Note:</b> These commands are also available from the shortcut menu when you right-click selected content.</p>
Undo and Redo	<p>Undo or redo recent actions for each page that you edit in the active notebook.</p> <p><b>Note:</b> OneNote Web App gives you a separate undo history for each page that you edit in the active notebook. You can undo an infinite number of actions per page during the current editing session, until you either insert a picture or receive an edit from another editor. Note also that moving and deleting pages cannot be undone.</p>	<ul style="list-style-type: none"> <li>Click the <b>Undo</b> and <b>Redo</b> buttons that appear above the <b>File</b> tab. Or, use the CTRL+Z (undo) and CTRL+Y (redo) keyboard shortcuts that you know from OneNote.</li> </ul>
Font formatting	Apply font, font size, and several font formatting attributes including bold, italic, underline, superscript and more. You can also highlight text, change font color, and clear formatting on selected text.	<ul style="list-style-type: none"> <li>On the <b>Home</b> tab, find all font formatting options in the <b>Basic Text</b> group.</li> </ul>
Paragraph formatting	Change paragraph alignment, increase or decrease the indent from left margin, or change text direction from left to right.	<ul style="list-style-type: none"> <li>On the <b>Home</b> tab, find paragraph formatting options in the <b>Basic Text</b> group. Text direction is available from the <b>Paragraph Alignment</b> dropdown list.</li> </ul>
Bullets and Numbering	Apply your choice of three bullet styles or five numbering styles. You can also use the Increase Indent and Decrease Indent buttons to change list level for existing bulleted and numbered lists in your notebook as well as those you create in OneNote Web App.	<ul style="list-style-type: none"> <li>On the <b>Home</b> tab, find bullets, numbering, and the options to change list level in the <b>Basic Text</b> group.</li> </ul>

Features and Benefits	Description	Where to Find
Styles	Easily apply text styles for quick formatting that helps to organize and structure your thoughts.	<ul style="list-style-type: none"><li>Find text styles on the <b>Home</b> tab, in the <b>Styles</b> group.</li><li>You can also use familiar keyboard shortcut keys including CTRL+ALT+1,2,3 to apply Heading styles and CTRL+SHIFT+N to apply Normal style.</li></ul>
Tags	Apply a variety of tags to your notes for easy organization and follow-up, such as to flag notes as questions, to-do items, contact information, and more.	<ul style="list-style-type: none"><li>On the <b>Home</b> tab, in the <b>Tags</b>, group, click <b>Tag</b>.</li></ul>
Proofing tools	<p>OneNote Web App automatically checks spelling as you type and applies a wavy red underline to misspelled text. You also get common AutoCorrect actions as you type, such as correcting common misspellings or converting characters to symbols.</p> <p>Additionally, you can set the proofing language or turn off spell-checking for selected text.</p>	<ul style="list-style-type: none"><li>On the <b>Home</b> tab, in the <b>Spelling</b> group, click <b>Spelling</b> to move to the next spelling error on the page. When you do, a dropdown list of correction options appears. You can also right-click a word that is identified as misspelled to access correction options.</li><li>On the <b>Home</b> tab, click the arrow beneath the <b>Spelling</b> button for <b>Set Proofing Language</b>, where you can change the proofing language or disable spell-checking for a selection.</li></ul>



Features and Benefits	Description	Where to Find
Create and manage pages and sections	Easily add or delete pages and sections, rename sections, and demote or promote subpages.	<ul style="list-style-type: none"> <li>Click the <b>New Page</b> icon in the navigation pane to add a page. Or, on the <b>Insert</b> tab, in the <b>Notebook</b> group, click <b>New Page</b> or <b>New Section</b>.</li> <li>Right-click a section tab for the option to rename or delete the section.</li> <li>Right-click a page tab for the options to delete the page and to increase or decrease the indent in order to create subpages.</li> </ul>
View and restore page versions	A page version is saved when someone makes changes in a shared notebook. When your notebook is open for editing in OneNote Web App, you can view, restore, or delete previous page versions.	<ul style="list-style-type: none"> <li>On the <b>View</b> tab, click <b>Page Versions</b>.</li> <li>When you select a previous page version, you see a notification bar at the top of the page indicating that this is a read-only previous page version. Click the bar for the option to delete or restore the active page version.</li> </ul>
Pictures	Insert a picture from your files or from Office.com Clip Art. You can also resize pictures and add alternative text.	<ul style="list-style-type: none"> <li>To insert a picture, on the <b>Insert</b> tab, in the <b>Picture</b> group, click <b>Picture</b> or <b>Clip Art</b>.</li> <li>To resize a picture or add alternative text, select the picture. The <b>Picture Tools Format</b> tab provides these options whenever a picture is selected.</li> </ul>

Features and Benefits	Description	Where to Find
Tables	Insert a table, edit table text, and easily edit basic table structure such as adding or deleting rows and columns.	<ul style="list-style-type: none"> <li>To insert a table, on the <b>Insert</b> tab, in the <b>Tables</b> group, click <b>Table</b>. Then, move your mouse across the grid to select the number of columns and rows you need and click to insert.</li> <li>To edit table structure, click in a table. When you do, the <b>Table Tools Layout</b> tab appears automatically, providing options to select, delete, and insert table elements and to align content in cells. Or, right-click in a table for table editing options.</li> </ul>
Hyperlinks	Insert a hyperlink to a web address or apply a link to selected text.	<ul style="list-style-type: none"> <li>On the <b>Insert</b> tab, in the <b>Links</b> group, click <b>Link</b>.</li> </ul> <p><b>Note:</b> You can also right-click a page tab for the option to copy a direct link to that page.</p>
Placeholders	OneNote Web App edit mode automatically displays placeholders for features it is unable to display, such as equations and digital ink. Placeholders preserve the layout and rich content in your notebooks and help you navigate a file when making edits in OneNote Web App.	<ul style="list-style-type: none"> <li>Placeholders for objects that cannot be displayed appear automatically.</li> <li>To view the full content that is shown as a placeholder in OneNote Web App edit mode, on the <b>View</b> tab, click <b>Reading View</b>. Or, on the <b>Home</b> tab, click <b>Open in OneNote</b>.</li> </ul>

## Platform Comparison

### Using Office Web Apps on SkyDrive

Windows Live SkyDrive is a free service designed to make it easy for consumers to share Microsoft Office documents and media files with others, and access their important files from virtually anywhere. Upload files from your computer by simply dragging them to the upload pane, or create new Word, Excel, PowerPoint, or OneNote files online in just a couple of clicks.

When you're signed into Windows Live, just click Office on the navigation bar at the top of the screen to view, edit, share, create, and manage files from one central location.

- SkyDrive gives you 25GB of storage space, making it easy to store and manage all of your documents. And you can confidently share files with others, knowing that SkyDrive saves previous versions of your files in the event that someone makes changes to content you need or if you need to retrieve content you have since changed or deleted.
- When you share your files, you can set specific permissions for each person you share with. Do this from SkyDrive or, when the file is open for viewing or editing online, share the file right from within Office Web Apps. You decide who can edit and who can only view the file. Additionally, SkyDrive enables you and those you share with to post comments on the file.

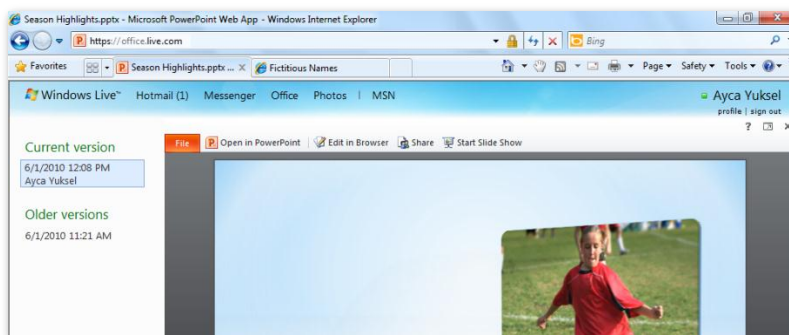


Figure 11: SkyDrive saves a version of your file when you or those you share with close the file after making changes online. You can view or restore any saved version of your file.

**Quick Tip:** Use the **Save to Web** feature in several Office 2010 programs to save your files directly to SkyDrive as you work on them.

Access SkyDrive using your free Windows Live ID. Sign up for your Windows Live ID and get started with SkyDrive at <http://office.live.com>.

## Using Office Web Apps with Hotmail

Windows Live Hotmail also works with Office Web Apps and SkyDrive to help you work with others more easily than ever. View and edit Microsoft Office documents that you receive as e-mail attachments directly from your Hotmail inbox.

- Click an attached Word, Excel, or PowerPoint document to open it automatically for viewing in Office Web Apps. To edit the file online, just click the Edit in Browser button that appears on the command bar of the applicable Office Web App in view mode. Windows Live automatically saves a copy of the file to SkyDrive and opens it for editing.
- When you close the file after making changes, SkyDrive automatically prompts you with the option to reply to the e-mail sender and include a link to your updated version of the file as shown in Figure 12.

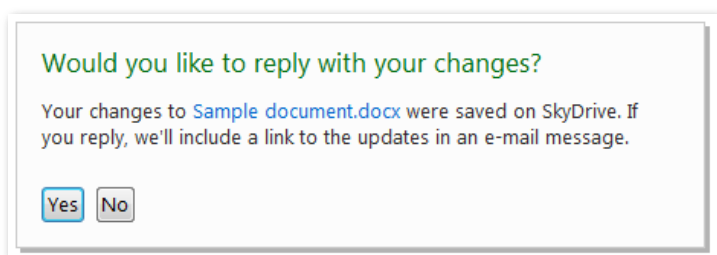


Figure 12: Edit a Microsoft Office document e-mail attachment online directly from your inbox, and reply with your changes right from Office Web Apps.

## Using Office Web Apps on SharePoint 2010

SharePoint 2010 is designed to help people in businesses share information and work together more effectively with easy-to-use, customizable, powerful tools for document management, workflow, and communication. Easily create and customize your own sites for team projects and convenient online access to your content.

- You can easily customize your own SharePoint sites for the types of content they include, such as document libraries, calendars, lists, discussion boards, and contact lists. Add individual files from your computer to a SharePoint library or upload multiple files at once just by dragging files to an upload window.
- When SharePoint 2010 and Office Web Apps are installed in your organization, you can view, share and edit content online with advanced security, inside your own company's firewall. Microsoft also offers a, hosted SharePoint Online service for businesses.

- When you store your Word, Excel, PowerPoint, and OneNote files in a SharePoint 2010 document library, it's easy to manage your documents from virtually anywhere with tools such as the ability to specify permissions for others with whom you share files, create and manage workflow for your files, and access and manage previous file versions. The SharePoint Ribbon, shown in Figure 13, gives you a familiar environment for accessing all of the tools you need.

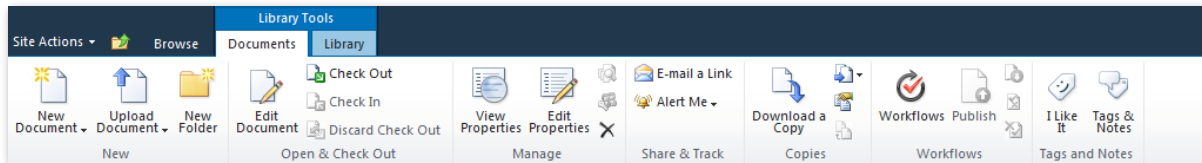


Figure 13: The SharePoint 2010 Ribbon gives you easy access to a wide range of tools for managing your documents and libraries.

You can customize many aspects of your SharePoint sites. And, your IT administrator can customize your SharePoint experience in several ways, such as to set file size limits or to enable you to create new documents online.

To learn more about working with SharePoint 2010, including getting started resources for SharePoint users, visit <http://microsoft.com/sharepoint> or [office.com/sharepoint](http://office.com/sharepoint). To learn about SharePoint Online services, visit <http://www.microsoft.com/online/sharepoint-online.mspx>.

## Platform comparison overview

The following overview provides a summary comparison of capabilities when using Office Web Apps on SkyDrive, SharePoint 2010 installed in your organization, and SharePoint Online:

	<b>SkyDrive</b>	<b>SharePoint 2010 installed in your organization</b>	<b>SharePoint Online</b>
	For personal use	For business use	For business use
<b>Storage space</b>	25GB	Configurable by IT	Configurable by IT
<b>File size limits</b>	50MB per file for Word, PowerPoint, and OneNote; 2 MB for Excel.	Configurable by IT	Configurable by IT
<b>Pricing</b>	Free (w/ ads)	Office 2010 volume license	TBD
<b>Ad supported</b>	✓		
<b>Hotmail integration</b>	✓		
<b>Backup and restore</b>		✓	✓
<b>Document lifecycle management</b>		✓	✓
<b>IT admin control</b>		✓	✓
<b>Ability to create new documents</b>	✓	Configurable by IT if Microsoft Office desktop applications are not installed on the active computer.	Configurable by IT if Microsoft Office desktop applications are not installed on the active computer.
<b>Browsers supported</b>	Internet Explorer 7 or later for Windows, Safari 4 or later for Mac, Firefox 3.5 or later for Windows, Mac, or Linux, and Chrome 3 or later for Windows.	Internet Explorer 7 or later for Windows, Safari 4 or later for Mac, and Firefox 3.5 or later for Windows, Mac, or Linux.	Internet Explorer 7 or later for Windows, Safari 4 or later for Mac, and Firefox 3.5 or later for Windows, Mac, or Linux.
<b>Mobile support</b>	Word and PowerPoint Web Apps	Word, Excel, and PowerPoint Web Apps	Word, Excel, and PowerPoint Web Apps
<b>Mobile browsers supported</b>	Safari 4 on iPhone 3G and 3GS and Internet Explorer 7 on the upcoming Windows Phone 7	Internet Explorer on Windows Mobile 5 or later, Safari 4 on iPhone 3G or 3GS, BlackBerry 4.x and later, Nokia S60, NetFront 3.4, 3.5 and later, Opera Mobile 8.65 and later, and Openwave 6.2, 7.0 and later.	Internet Explorer on Windows Mobile 5 or later, Safari 4 on iPhone 3G or 3GS, BlackBerry 4.x and later, Nokia S60, NetFront 3.4, 3.5 and later, Opera Mobile 8.65 and later, and Openwave 6.2, 7.0 and later.

## FAQ

### About Office Web Apps

1. [What are Office Web Apps?](#)
2. [How can I use Office Web Apps?](#)

### Accessing Office Web Apps

1. [How can I access Office Web Apps?](#)
2. [What computer browsers are supported for using Office Web Apps?](#)
3. [Can I use Office Web Apps from the browser on my mobile device?](#)
4. [How much will Office Web Apps cost?](#)

### Using Office Web Apps

1. [If I use Office Web Apps, do I still need Microsoft Office?](#)
2. [What are the differences between Office Web Apps on SkyDrive and those on SharePoint 2010?](#)
3. [Does Office 2010 give me a better experience with Office Web Apps compared to earlier versions of Microsoft Office?](#)
4. [Do Office Web Apps enable real-time collaboration?](#)
5. [In what languages will Office Web Apps be available?](#)
6. [How are files saved in Office Web Apps?](#)
7. [What file types are supported in Office Web Apps?](#)
8. [How do I print from Office Web Apps?](#)
9. [Can I create new documents with Office Web Apps?](#)

## About Office Web Apps

### 1. What are Office Web Apps?

Office Web Apps are online companions to Microsoft Office, giving you the freedom to access, edit, and share Microsoft Office documents from virtually anywhere.

### 2. How can I use Office Web Apps?

Use Office Web Apps whenever you need the flexibility of working with or sharing your Word, Excel, PowerPoint, or OneNote files on the web. For example:

- View the rich documents that you create in the Microsoft Office applications on your desktop in high-fidelity, right from a web browser.
- Make a quick change to your file virtually whenever and wherever inspiration strikes.
- Easily collaborate on content with people using different versions of Microsoft Office on both Windows and Mac, or even those who don't have Microsoft Office installed on their computer.
- Simultaneously edit the same Excel workbook or OneNote notebook with other people in different locations.

## Accessing Office Web Apps

### 1. How can I access Office Web Apps?

For personal use, Office Web Apps are available on SkyDrive, using a free Windows Live ID. For business, Office Web Apps can be installed on SharePoint Foundation 2010 or SharePoint Server 2010 on-premises or hosted via Microsoft Online.

For information on how to get started with Office Web Apps, visit <http://office2010.microsoft.com/web-apps>.

### 2. What computer browsers are supported for using Office Web Apps?

Supported browsers include Internet Explorer 7 or later for Windows, Safari 4 or later for Mac, and Firefox 3.5 or later for Windows, Mac, or Linux. Office Web Apps on SkyDrive also support Chrome 3 and later for Windows.

### 3. Can I use Office Web Apps from the browser on my mobile device?

You can view the Word, Excel and PowerPoint files that you save to a SharePoint 2010 site via Office Web Apps on many devices. Supported mobile browsers include Internet Explorer on Windows Mobile 5 or later, Safari 4 on iPhone 3G or 3GS, BlackBerry 4.x and later, Nokia S60, NetFront 3.4, 3.5 and later, Opera Mobile 8.65 and later, and Openwave 6.2, 7.0 and later.

You can also view Word and PowerPoint files that you save to a SkyDrive site via Office Web Apps on many devices. Supported mobile browsers include Safari 4 on iPhone 3G or 3GS, as well as Internet Explorer 7 on the upcoming Windows Phone 7.



#### **4. How much will Office Web Apps cost?**

For consumers, Office Web Apps are free on Windows Live, by the use of a free Windows Live ID.

For business customers, purchasing a volume license edition of Office 2010—Office Professional Plus 2010 or Office Standard 2010—includes a license for the Office Web Apps. Business customers can then install and run Office Web Apps on SharePoint 2010.

### Using Office Web Apps

#### **1. If I use Office Web Apps, do I still need Microsoft Office?**

Office Web Apps are online companions to the widely-used Microsoft Office desktop applications. Use of the Office desktop applications is not required for use of the Office Web Apps. However, many common usage scenarios will involve use of the Web Apps in conjunction with the desktop apps—using Office Web Apps for fast, lightweight editing and easy sharing, and using the desktop applications for deeper editing and full functionality.

#### **2. What are the differences between Office Web Apps on SkyDrive and those on SharePoint 2010?**

Essentially, the experience within Office Web Apps is consistent whether you are using them from SharePoint 2010 or from Windows Live SkyDrive in a browser on your PC or Mac. However, there are differences in the host environments that make SharePoint the preferred experience for most organizations. While it is possible for our business customers to use Office Web Apps via SkyDrive, we find that most business customers will want to consider the benefits of deploying Office Web Apps on SharePoint if they are to provide Office Web Apps to their organization.

- Office Web Apps on SharePoint 2010 are best for organizations because they enable the user to work within the familiar SharePoint experience and provide key enterprise SharePoint features such as administrator site control, document life cycle management, auditing, and backup/restore capabilities.
- Office Web Apps on SkyDrive is an ad-supported service.

For more information about using Office Web Apps on SharePoint 2010 or on SkyDrive, see the [Platform Comparison](#) section of this guide.

### **3. Does Office 2010 give me a better experience with Office Web Apps compared to earlier versions of Microsoft Office?**

Yes, the best experience with the Office Web Apps will come in conjunction with Office 2010 applications or suites.

- Save a file to SkyDrive or a SharePoint 2010 site directly from certain Office 2010 programs.
- Use co-authoring capabilities in Word 2010, PowerPoint 2010, or OneNote 2010 to simultaneously edit files with others when those files are saved in a SkyDrive folder or on a SharePoint 2010 site.
- Take advantage of the new Broadcast Slide Show feature in PowerPoint 2010 to broadcast your presentation to a remote audience, who views your slide show in PowerPoint Web App as you deliver your presentation.

### **4. Do Office Web Apps enable real-time collaboration?**

Yes. You can use Excel Web App and OneNote Web App to edit the same workbook or notebook at the same time as other people in different locations. You can also simultaneously edit Word 2010 documents, PowerPoint 2010 presentations, and OneNote 2010 notebooks that are saved to a SharePoint 2010 site or SkyDrive folder using the Office 2010 applications on your desktop.

### **5. In what languages will Office Web Apps be available?**

Office Web Apps will be available in all Office 2010 languages: English, Japanese, French, German, Spanish, Chinese (Simplified), Arabic, Chinese (Traditional), Korean, Russian, Hebrew, Dutch, Italian, Hindi, Thai, Swedish, Danish, Brazilian, Polish, Norwegian, Finnish, Portuguese, Hungarian, Czech, Ukrainian, Turkish, Greek, Romanian, Catalan LIP, Slovenian, Slovak, Croatian, Bulgarian, Latvian, Lithuanian, Estonian, Serbian Latin, Kazakh, Basque, and Galician.

SkyDrive does not support Galician and Kazakh, so Windows Live users will see Spanish and Russian substituted respectively for Galician and Kazakh.

Note that availability of Office Web Apps on SkyDrive will be rolled out on a market-by-market basis.

## 6. How are files saved in Office Web Apps?

Files are saved automatically, as you work, in Excel, PowerPoint, and OneNote Web Apps. To save a file in Word Web App, click the Save button that appears above the File tab or click the File tab and then click Save.

## 7. What file types are supported in Office Web Apps?

Office Web Apps save files in the Office 2010 file formats. If you edit files online from versions of Microsoft Office earlier than 2007 for Windows or 2008 for Mac, Office Web Apps saves a copy of your file in the Office 2010 formats and leaves the original unchanged in your SharePoint 2010 library or SkyDrive folder.

Following is an overview of supported file types for Office Web Apps:

File Format	View in Web App	Edit in Web App
<b>Word documents created in Word '95 and later</b>		
<b>docx</b>	Yes	Yes
<b>doc</b>	Yes	Converted to docx
<b>docm</b>	Yes <sup>11</sup>	Yes <sup>12</sup>
<b>dotm, dotx</b>	Yes	No
<i>Max file size: 50MB for SkyDrive and none for SharePoint other than configurable file size limits</i>		
<b>Excel workbooks created in Excel '97 or later</b>		
<b>xlsx, xlsb</b>	Yes	Yes
<b>xls</b>	Yes, on SkyDrive only	Yes, after conversion to xlsx, on SkyDrive only
<b>xlsm</b>	Yes <sup>12</sup>	Yes, with macros stripped <sup>12</sup>
<i>Max file size: 2MB for SkyDrive, 10MB default for SharePoint (admin can configure to up to 2GB)</i>		
<b>PowerPoint presentations created in PowerPoint '97 or later</b>		
<b>pptx, ppsx</b>	Yes	Yes
<b>ppt, pps</b>	Yes	Converted to pptx / ppsx
<b>pptm, potm, ppam, potx, ppsm</b>	Yes <sup>12</sup>	No
<i>Max file size: 50MB for SkyDrive and none for SharePoint other than configurable file size limits</i>		
<b>OneNote notebooks created in OneNote 2010</b>		
<b>one - OneNote 2010</b>	Yes	Yes
<i>Max file size: 50MB for SkyDrive and none for SharePoint other than configurable file size limits</i>		

<sup>11</sup> Macros do not run.

<sup>12</sup> If macros exist, you are prompted to create a copy of the file with the macros removed.

## **8. How do I print from Office Web Apps?**

You can print a document from Word Web App in view mode. To do this, click the File tab on the command bar and then click Print. (A PDF reader, such as Adobe Acrobat Reader, is required.) Additionally, when running Office Web Apps on SkyDrive, you can print a PowerPoint presentation from the File tab in either View or Edit mode. To print from Excel or OneNote Web Apps, use the print command in your web browser.

## **9. Can I create new documents with Office Web Apps?**

You can create new documents from your host environment for Office Web Apps—either SkyDrive or SharePoint 2010.

- When using Office Web Apps on SkyDrive and you select the option to create a new Word, Excel, PowerPoint, or OneNote file, the file is automatically created in Office Web Apps.
- When using Office Web Apps on SharePoint 2010, if you have Microsoft Office installed on your computer, new files are always created using your desktop applications. If you don't have Microsoft Office on your desktop, you can configure SharePoint 2010 to create new documents in Office Web Apps – learn how [here](#).

## Requirements\Disclosures

Office Web Apps are online companions to Microsoft Office. Use of Office Web Apps requires an appropriate device and Internet connection, as well as the following:

- **For businesses and institutions:** Office Web Apps require SharePoint Foundation 2010.
- **For personal use:** Office Web Apps require a Windows Live ID.
- **For use on computers:** Supported browsers for Office Web Apps include Windows Internet Explorer 7 or later for Windows, Safari 4 or later for Mac and Firefox 3.5 or later for Windows, Mac, or Linux. Office Web Apps on SkyDrive also support Chrome 3 and later for Windows.
- **For use on mobile devices:** Word, Excel, and PowerPoint files can be viewed using Office Web Apps on many devices. Supported mobile viewers for Office Web Apps on SharePoint 2010 include Internet Explorer on Windows Mobile 5/6/6.1/6.5, Safari 4 on iPhone 3G and 3GS, BlackBerry 4.x and later, Nokia S60, NetFront 3.4, 3.5 and later, Opera Mobile 8.65 and later, Openwave 6.2, 7.0 and later. Supported mobile viewers for Office Web Apps on SkyDrive include Safari 4 on iPhone 3G and 3GS and Internet Explorer 7 on the upcoming Windows Phone 7. Viewing Excel files via a mobile browser is currently only available with Office Web Apps on SharePoint 2010.

This document is provided "as-is." Information and views expressed in this document, including URL and other Internet web site references, may change without notice. You bear the risk of using it.

Some examples depicted herein are provided for illustration only and are fictitious. No real association or connection is intended or should be inferred.

This document does not provide you with any legal rights to any intellectual property in any Microsoft product. You may copy and use this document for your internal, reference purposes.

© 2010 Microsoft Corp. All rights reserved.