

# SQL Server runs best on Azure Virtual Machines

SQL Server is the most-used database in the world, which means it's probably running in your datacenter already. Today, organizations like yours are increasingly accessing IT resources or delivering capabilities through the cloud<sup>1</sup>—it is an essential ingredient for modernizing your data strategy. Why? Because, the IT challenges you face have solutions in the cloud.

## Today's IT challenges...

- IT budget constraints
- "I need it yesterday" timelines
- Patchwork of aging hardware
- Highly variable workloads

## ...have solutions in the cloud

- Reduced capex/pay as you go pricing
- Rapid deployment
- Reduced configuration
- Elastic scale

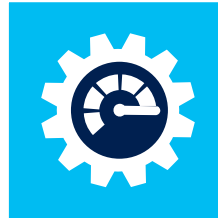
## SQL Server on Azure Virtual Machines

### Fast time-to-value with cloud flexibility



Set up fully configured SQL Server deployments in minutes, then scale up or scale down on the fly

### Tuned for exceptional performance



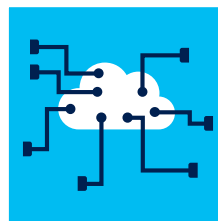
Meet your toughest demands with virtual machines optimized by the team that built SQL Server

### Most secure database on a trusted cloud



Protect your entire data estate with the most secure database on the most compliant cloud

### Effortless hybrid connectivity



Get the most out of your on-premises investments and take advantage of Azure's rich ecosystem

## NATS transforms UK airspace with SQL Server and Azure, and the cost savings soar

- 2.2M flight paths optimized, saving £180M+ in annual fuel costs
- Data analysis sped up from 20 days to 5 minutes



## Cloud flexibility

Spin-up and manage virtual machines in minutes, not weeks

### Any SQL Server version and edition, on the VM size you need

SQL Server is guaranteed to run the same in Azure VMs as on-premises

Scale-up/down and pause/resume VMs as needed

Windows Server or Linux platform

Free Developer and Express editions for Dev/Test or lightweight workloads

### Pre-configured for target workloads, like OLTP or DW

Automated HA, patching and backup, on your terms

Pay your SQL Server license by the minute, or easily reuse an existing one with BYOL images

Management from Azure Portal, PowerShell, CLI or System Center

Single vendor support

### VM sizes up to 32 cores, 448GB mem, and 64TB storage

### Up to 2000 MB/s storage bandwidth for great I/O performance

Ultra-low latency with SSD drives for storage and local read cache

## Tuned for performance

Run demanding workloads on highly optimized VMs

### VMs are tuned for exceptional performance by the team that builds SQL Server

- VM configured with best practices
- Optimized storage configuration

VMs updated with the latest performance fixes

## Secure and trusted

Protect your data in a proven solution—SQL Server and Azure

### Three perfect copies of your data, locally and remote.

99.95% uptime SLA

Automated backups with point-in-time restore

AlwaysOn replicas for HA/DR or offloading read workloads

Deployments fully isolated in private networks

### Largest compliance portfolio in the industry—Azure

- Azure ISO 27001
- FedRamp
- SOC 1 and SOC2
- HIPAA/HITECH
- and more

Reduced exposure to threats with the least vulnerable database—seven years in a row<sup>2</sup>

## Hybrid connectivity

Get the most out of your investments—existing or planned

### Build powerful apps with Azure VMs or App Service (web & mobile)

Add intelligence and access insights with Power BI Embedded, Machine Learning, or Cognitive services

Simplify big data management and analytics with Azure Data Lake, or HDInsight

Leverage fully-managed data solutions with Azure SQL Database, or Azure SQL Data Warehouse

### Integration with on-premises DC and apps for true hybrid environment

Transition to the cloud at your own pace with backups, StretchDB, or AlwaysOn replicas in Azure

Secure site-to-site tunnel connection with up to 10 Gb/s with Express Route

Tools your team is already trained on—SSMS, Visual Studio, Office

Unparalleled benefits across scenarios

OLTP

DW

BI

HA/DR

Dev/test

Run with the best—SQL Server on Azure Virtual Machines



Spin up a free SQL Server Developer image



Take advantage of \$200 in Azure consumption



Try SQL Server on Linux

<sup>2</sup> National Institute of Standards and Technology Comprehensive Vulnerability Database update, 2016