

POCKET CONTROL PANEL

Graphics and reports visualization over a PDA

May 2008

Index:

Application Execution	3
Information Selection	5
Graphics	5
Reports	6
Presentations	7
Information Visualization	8

INTRODUCTION

Pocket Control Panel® allows a director or any other manager to manage company's goals and objectives using a mobile and graphic system, improving strategy, position and state of art communications and understanding between all the organization's levels. Pocket Control Panel® proportionate an access the dashboard whenever and wherever the user is.

REPORTS AND DOCUMENTS DOWNLOADING

As the Pocket Control Panel gives the user access to the information contained on its back office systems, the first thing that will be necessary is the selection of the information to see over the PDA. Documents will be saved on a folder perfectly synchronized with the PDA, so without doing any additional action, the PDA will be automatically actualized with the requested reports and information.

It is necessary to consider that, for this first step, the PDA has to be connected to the PC and the ActiveSync configuration has to be the correct one.

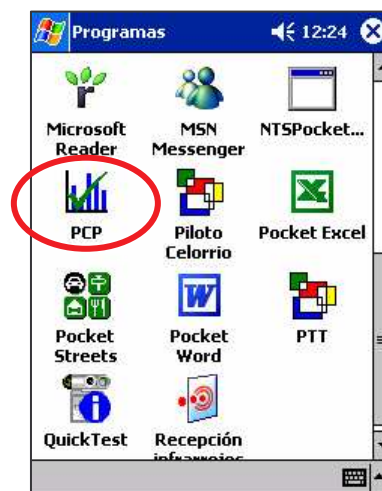
From this point, the user will only interact with his PDA, so that with Pocket Control Panel, the PDA will have everything it needs to work on in an autonomous way.

APPLICATION EXECUTION

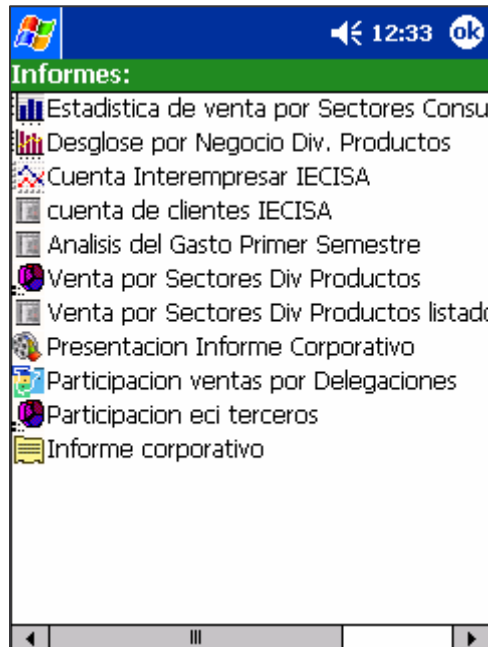
First of all, to be able to execute the application from the mobile device, it will be necessary to accede to the device main menu (PDA) and to select to the option “Programas” from the list of options of the menu.



Once pushed the previously mentioned option, there will appear a menu with a direct access to each one of the existing applications in the device. To execute the application it is jus needed to press the PCP (Pocket Control Panel) icon.



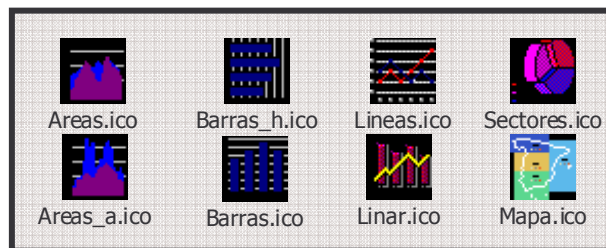
After the application is opened, this is, once finished and abandoned the splash screen of introduction, the application will show a list of information, topics, graphics and presentations accessible from the device.



As it can be seen, each on of the different lists of graphics and charts, is accompanied by its corresponding icon to simplify the access and to easy localize the option wanted:

➤ **Graphics**

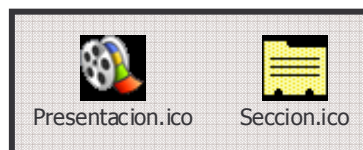
- Area
- Acumulating Area
- Horizontal Bars
- Vertical Bars
- Lines
- Lines and Bars
- Pie Charts
- Map



➤ **Reports**

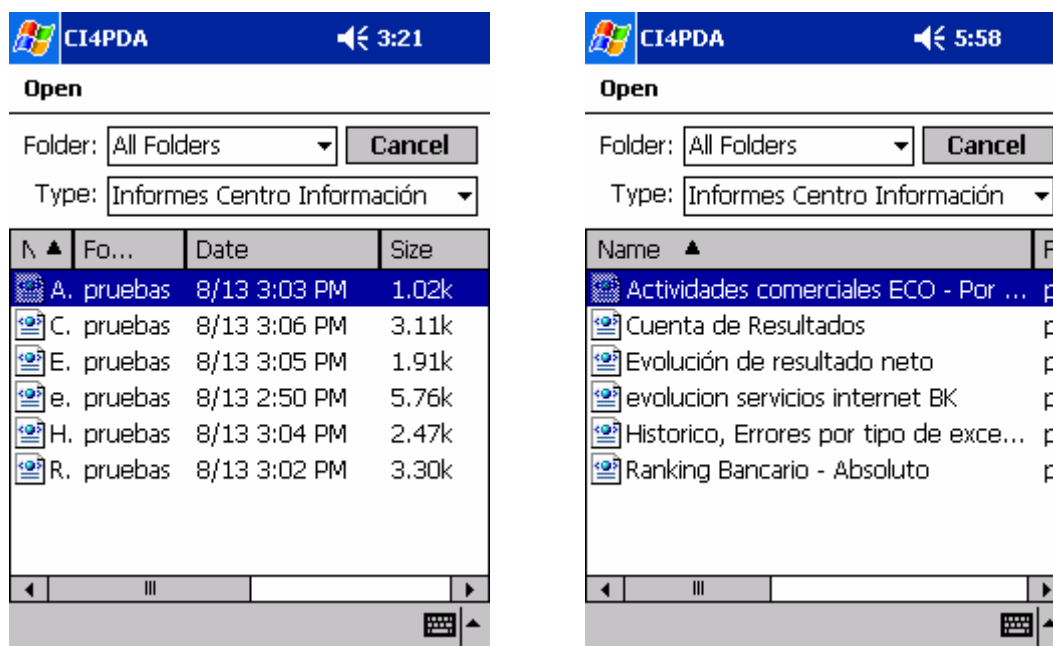


➤ **Presentations**



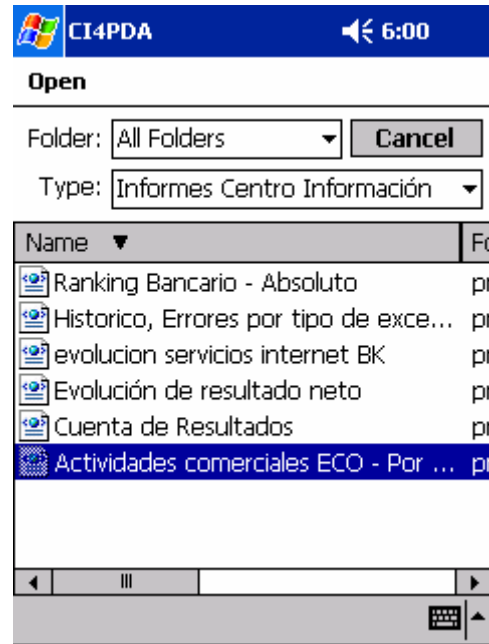
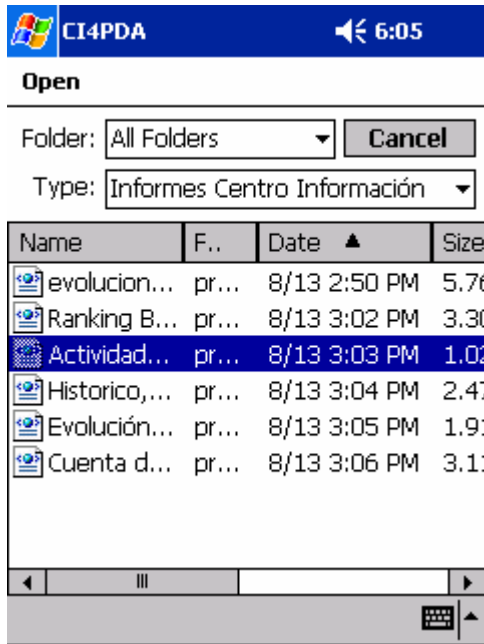
Destacar la fácil visualización de toda la información de los informes: nombre, carpeta en la que se encuentra, fecha de creación del informe en la PDA, tamaño del informe, etc..., así como la facilidad de malear la tabla contenedora del listado de informes: ensanchar o estrechar columnas, etc...

It is necessary to emphasize the easy visualization of all the information of the reports: name, folder where it is, date of creation of the report in the PDA, size of the report, etc..., as well as the facility of malear the listing of information: to widen or to narrow columns, etc...



Malleability of columns in the listing of information

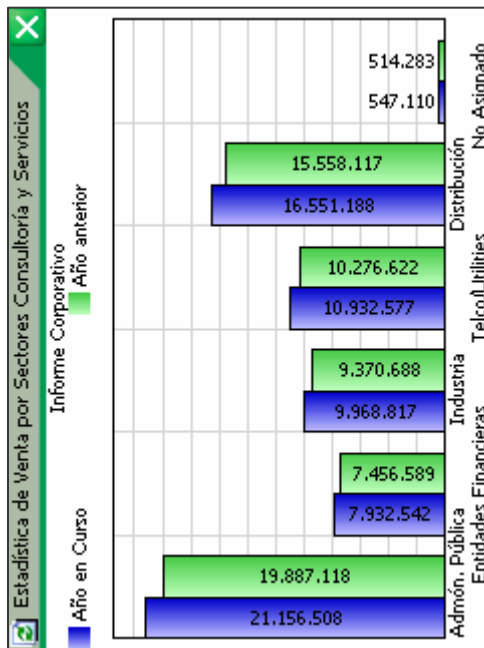
Special mention to the simplicity of grouping and ordering the information per date, name or size.



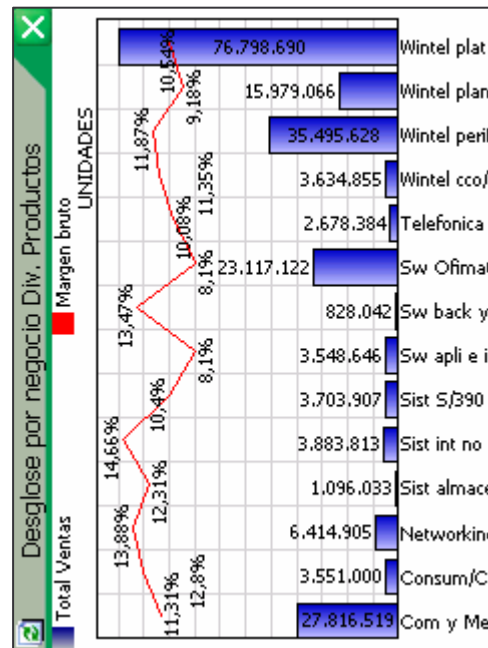
Information Selection

In order to visualize a certain report, graph or presentation, the user will only have to press on the one required from the previously seen list, and, automatically, the application will show the information associated to the icon.

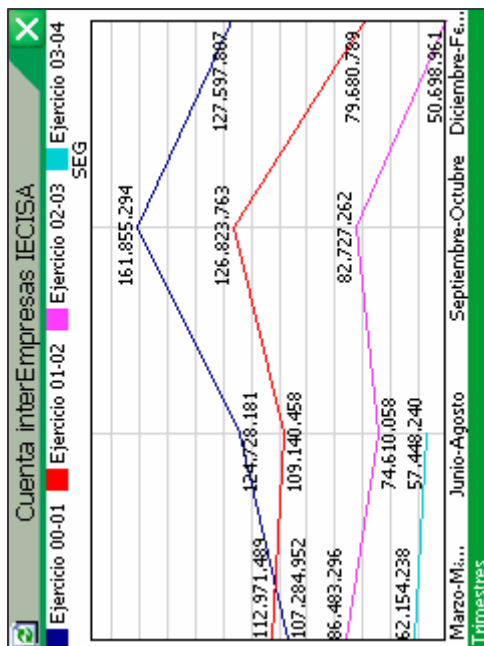
Graphics:



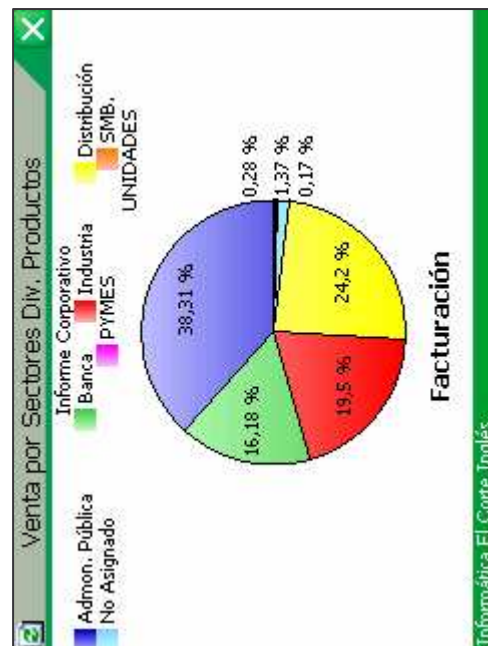
Area



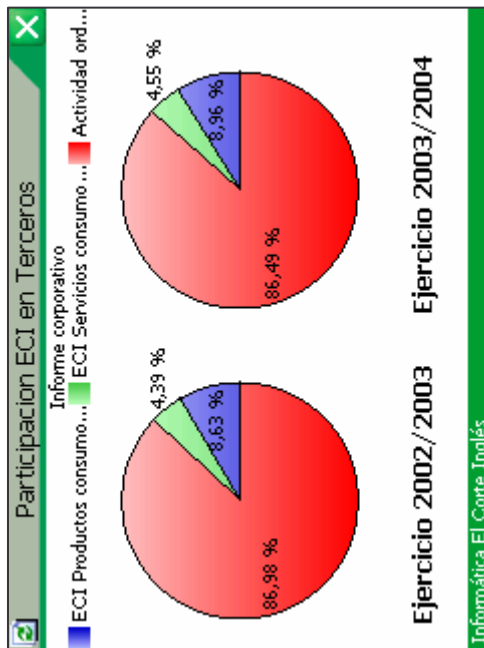
Lines and Bars



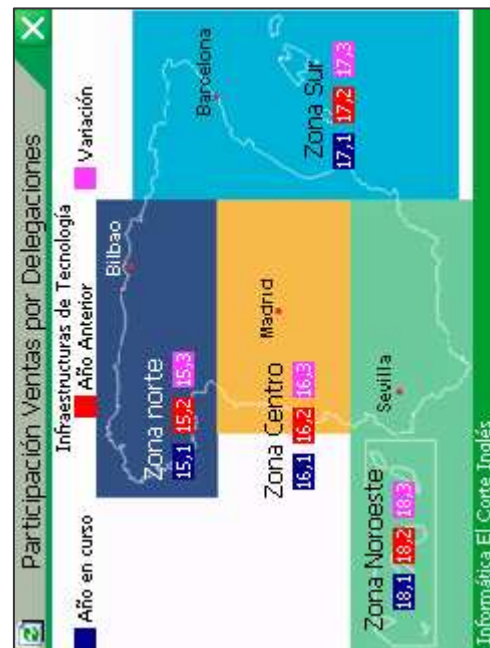
Lines



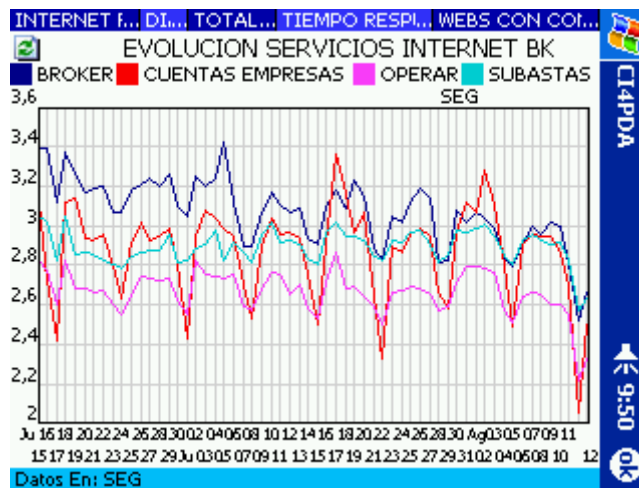
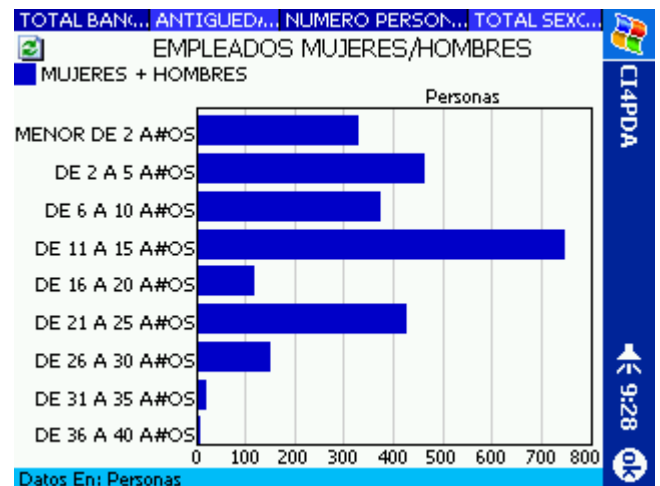
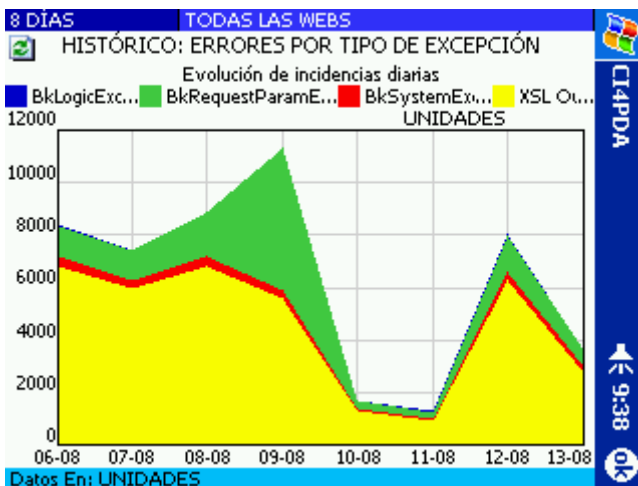
Pie Chart



Pie Charts



Maps



Reports:

Venta por Sectores Div. Productos		
Informe Corporativo		
	Facturación	Beneficio Bruto
Admon. Pública	43.982.404	4.455.096
Banca	18.571.354	1.897.019
Industria	22.381.310	2.216.647
Distribución	27.777.662	2.660.741
SMB.	1.571.279	150.408
PYMES	197.115	3.310
No Asignado	324.229	-1.397
TOTAL	114.805.354	11.381.824

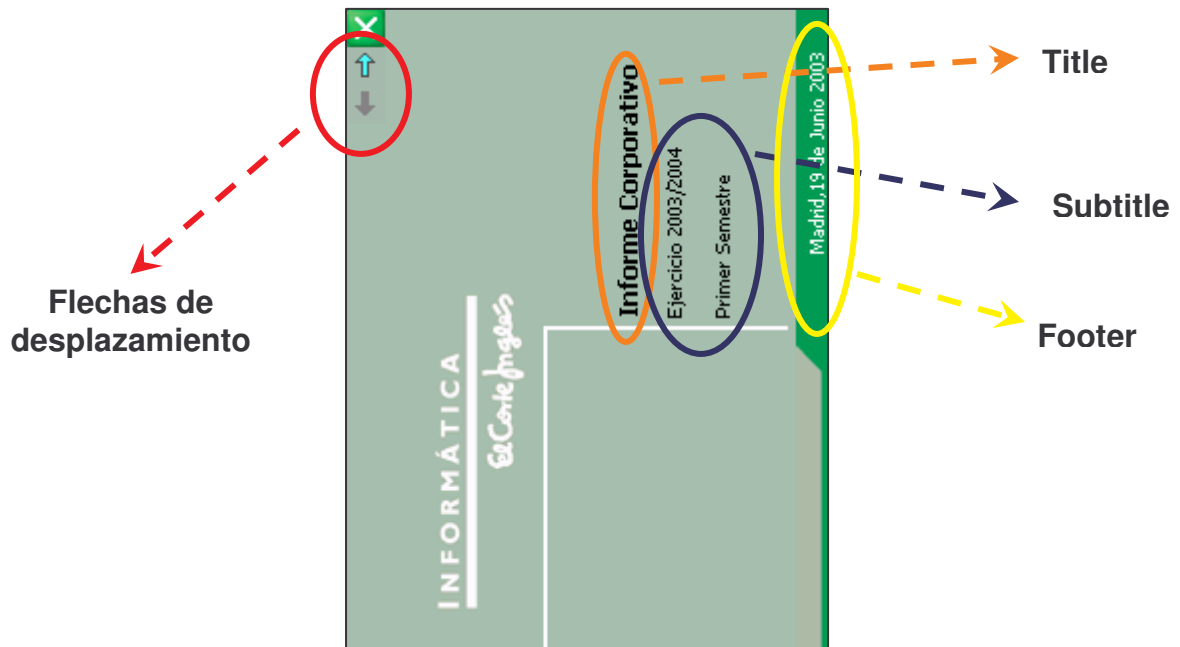
Cuenta de Clientes IECISA		
Informe Corporativo		
	SALDO 28/02/03	FACTUR.
Admón. Pública	78,8	59,3
Banca y Seguros	20	31,1
Industria	49,7	49,5
Distribución	18,6	22,8
Grupo ECI	2,7	81,7
Otros	0,8	1,8
TOTAL	170,8	246,2
TOTAL Pta.	28.419	40.962
Investrónica	46,7	187

Análisis del Gasto Primer Semestre			
Informe Corporativo			
	Integrid	Distribuid	
Presupuesto			
C Personal /Fact E Grupo	28,8	6,5	
Amortizaciones y Renting	1,5	0,1	
Arr,Repar,Sumin y Com	0,5	0,2	
Adecuaciones			
Servicios Contratados	8,9	0,6	
Indemnizaciones			
Otros G e I Comiantes	2,9	1,6	
TOTAL	42,1	10	
Realizado			
C Personal /Fact E Grupo	27,3	5,7	
Amortizaciones y Renting	1,3	0,1	
Arr,Repar,Sumin y Com	0,4	0,1	
Adecuaciones			
Servicios Contratados	7,3	0,7	
Indemnizaciones			

BANCA PRIVADA+BANCO EXTERIOR		
RANKING BANCARIO - ABSOLUTO		
(Millones de PESETAS)		
JUNIO 02	ACTIVOS	INVERSION
BILBAO-VIZCAYA	31.340.851	16.646.198
B.S.C.H.	27.856.152	12.485.764
ESPA#OL DE CRED	8.599.555	4.081.711
POPULAR ESPA#OL	4.680.153	2.963.880
SABADELL	3.765.433	2.210.019
BANKINTER S.A.	3.652.908	2.652.108
DEUTSCHE BANK S	1.894.656	1.126.662
PASTOR	1.539.812	1.050.291
ATLANTICO	1.507.734	810.790
BARCLAYS BANK,	1.280.613	696.501
COOPERATIVO ESP	986.760	50.454
ZARAGOZANO	922.068	541.863
TOTAL BANCA	104.932.637	53.894.613

Fuente : Consejo Superior Bancario. Datos a JUNIO 2.002

Presentation:



When it is solicited to visualize a presentation, first of all, there will appear a preliminary screen of the presentation, as represented above, indicating the title, the different subtitles and the foot from the same one.

In addition, as the document selected to be visualized in the PDA is a presentation, it will surely be formed by a series of graphs and reports. These all will be visualized according to the previously established order, with the possibility of moving the image with the arrows of displacement of the left superior corner.

Information Visualization

When the existing labels in the different graphs and reports are not absolutely legible due to their length, they will appear three dots on the document. They will indicate this characteristic. In this case, to visualize it normally, it will be necessary to press on the concrete label, so that a pop type message will show all the necessary information, as it is represented in the image below.

