



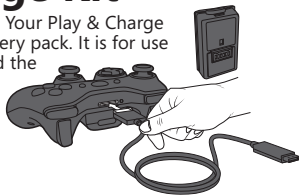
1111 Part No. X16-69526-04

ENGLISH

Xbox 360 Play & Charge Kit

Thanks for choosing the Xbox 360 Play & Charge Kit. Your Play & Charge Kit lets you play games while you recharge your battery pack. It is for use exclusively with the Xbox 360 Wireless Controller and the Xbox 360® video game and entertainment system. The Xbox 360 Play & Charge Kit features:

- NiMH rechargeable battery pack offering up to 35 hours of play per charge.
- Battery fuel gauge accessible in the Xbox Guide.
- Continuous gameplay while you charge.



⚠ WARNING

Before using this product, read this manual and the Xbox 360 console instructions for important safety and health information. Keep all manuals for future reference. For replacement manuals, visit www.xbox.com/support.

⚠ Rechargeable Battery Safety

Only use Microsoft approved rechargeable battery packs, identified by the Xbox 360 compatible logo, with your wireless controller and charge cable. Use of unapproved battery packs may result in injury from burns, fire, or explosion.

Improper use of batteries may result in battery fluid leakage, overheating, or explosion. Released battery fluid is corrosive and may be toxic. It can cause skin and eye burns, and is harmful if swallowed. To reduce the risk of injury:

- Charge only with the Xbox 360 Play & Charge Kit, the Xbox 360 Quick Charge Kit, or another Microsoft approved charger.
- Keep batteries out of reach of children.
- Do not heat, open, puncture, mutilate, or dispose of batteries in fire.
- If a battery leaks, remove the battery, taking care to keep the leaked fluid from touching your skin or clothes. If fluid from the battery comes into contact with skin or clothes, flush skin with water immediately. Before inserting a new battery, thoroughly clean the controller with a damp paper towel.
- Recycle or dispose of batteries in accordance with local and national disposal regulations (if any).
- Remove the battery if it is worn out or before storing your controller for an extended period.
- Do not allow metal objects to touch the battery terminals; they can become hot and cause burns. For example, do not carry the battery in a pocket with keys or coins.

⚠ Prevent the Xbox 360 Console from Falling

If the Xbox 360 console falls and hits someone, especially a small child, it could cause serious injury. To reduce the risk of such injuries and damage to the Xbox 360 console:

- Use your controller wirelessly when possible.
- When playing while you charge, arrange the charge cable so that people and pets are not likely to trip over or accidentally pull on it as they move around or walk through the area.
- Keep the charge cable out of the reach of children and pets when charging the battery pack or storing the charge cable.
- Disconnect the charge cable from the console and the controller when not in use.

USING YOUR PLAY & CHARGE KIT

Charge the Battery Pack

Charge your Xbox 360 Rechargeable Battery Pack before first use and whenever it is depleted.

To charge the battery pack using the charge cable:

- 1 Press the tab on the top of the AA battery pack and pull down to detach it from the controller.
- 2 Insert the rechargeable battery pack into the battery compartment on the controller and push in to lock.

NOTE

To avoid pinching your fingers when inserting, push only on the flat surface of the battery pack.

- 3 Connect the charge cable to the charge port on the front of the controller.

IMPORTANT

Do not connect the charge cable without a rechargeable battery pack or AA battery pack installed. This can damage the controller.

- 4 Connect the charge cable to a controller port.
- 5 Turn on your console.

When you turn on your console, the light on the charge cable will glow red as your battery pack charges. When the light switches to green, the battery pack is fully charged and the controller can be used wirelessly.

NOTES

- Do not touch charge cable or battery pack terminals with your fingers or allow metal parts to touch them. Doing so may damage them.
- Fully charging the battery pack can take up to eight hours using the Xbox 360 Play & Charge Kit.
- The battery pack may become warm during charging or use. This is normal and does not indicate a problem with the battery pack.
- If the battery pack is unused for a long time, it may lose its charge. If this occurs, simply recharge the battery pack normally.
- Very depleted battery packs can take up to 20 minutes to charge enough to power a controller for use with the Play & Charge Kit.
- Remove and store the battery pack when not using the controller for a month or longer.
- At first, or after storage for a long period of time, it can take from three to five full charge cycles for the battery pack to achieve its full capacity.
- The battery pack has a limited life. The amount of play time will decrease as the battery pack ages or after many recharge cycles. The battery pack needs to be replaced when play time becomes too short or when it can no longer be charged.

Play While You Charge

You can continue to use your controller to play on your Xbox 360 console while it charges. While connected with the charge cable, your controller will continue to use wireless signals for gameplay. Do not use the charge cable without either a rechargeable battery pack or AA battery pack installed on your wireless controller.

Clean Your Battery Pack

If it is necessary to clean the battery pack contacts, use only a dry cloth. Water or chemicals can damage the contacts.

TROUBLESHOOTING

If you encounter problems, try the possible solutions provided below.

Charge Light Doesn't Glow

Make sure the battery pack is completely locked in to the controller battery compartment.

NOTE

Damaged battery packs will not charge and could harm your controller. Battery packs that have been crushed, immersed in liquids, or exposed to intense heat may be damaged beyond use and should be disposed of in accordance with local laws.

Battery Pack Charges Slowly

It takes longer for the Xbox 360 Rechargeable Battery Pack to charge when the controller is used to play games at the same time. Games that employ vibration feedback increase charge time.

Very depleted rechargeable battery packs can take up to 20 minutes to charge enough to power a controller for use with the Play & Charge Kit.

Battery Pack Charge Depletes Quickly

The amount of play time will decrease as the battery pack ages or after many recharge cycles. The battery pack should be replaced when play time becomes unacceptably short or when it can no longer be charged.

IF YOU NEED MORE HELP

For answers to common questions, troubleshooting steps, and Xbox Customer Support contact information, visit www.xbox.com/support.

Do not take your Xbox 360 console or its accessories to your retailer for repair. Please visit www.xbox.com/support for troubleshooting and service information.

⚠ Do Not Attempt Repairs

Do not attempt to take apart, service, or modify the Xbox 360 console, power supply, or its accessories in any way. Doing so could present the risk of serious injury or death from electric shock or fire, and it will void your Express Warranty.



Important Battery Information

Waste batteries, please recycle.

Disposal of Waste Batteries and Electrical & Electronic Equipment

This symbol on the product or its batteries or its packaging means that this product and any batteries it contains must not be disposed of with your household waste. Instead, it is your responsibility to hand this over to an applicable collection point for the recycling of batteries and electrical and electronic equipment. This separate collection and recycling will help to conserve natural resources and prevent potential negative consequences for human health and the environment due to the possible presence of hazardous substances in batteries and electrical and electronic equipment, which could be caused by inappropriate disposal. For more information about where to drop off your batteries and electrical and electronic waste, please contact your local city/municipality office, your household waste disposal service, or the shop where you purchased this product.

This product contains NiMH batteries.

This product is for use with NRTL-listed (UL, CSA, ETL, etc.) and/or IEC/EN 60950 compliant (CE marked) Information Technology equipment.

For Customers in Taiwan

Product Information

Product name: Xbox 360 Play & Charge Kit

Model no.: Xbox 360 Play & Charge Kit

Designated voltage: 5 VDC

Country of origin: China

Manufacturer name: Microsoft Corporation

Importer name: Synnex Technology International

Importer's Address: 4th Fl. 75, Section 3, Min-Sheng E. Rd., Taipei 104

Importer's number: (02) 2506-3320

COPYRIGHT

Information in this document, including URL and other Internet Web site references, is subject to change without notice. Unless otherwise noted, the example companies, organisations, products, domain names, e-mail addresses, logos, people, places and events depicted herein are fictitious, and no association with any real company, organisation, product, domain name, e-mail address, logo, person, place or event is intended or should be inferred. Complying with all applicable copyright laws is the responsibility of the user. Without limiting the rights under copyright, no part of this document may be reproduced, stored in or introduced into a retrieval system, or transmitted in any form or by any means (electronic, mechanical, photocopying, recording, or otherwise), or for any purpose, without the express written permission of Microsoft Corporation. Microsoft may have patents, patent applications, trademarks, copyrights, or other intellectual property rights covering subject matter in this document. Except as expressly provided in any written license agreement from Microsoft, the furnishing of this document does not give you any license to these patents, trademarks, copyrights, or other intellectual property.

© 2011 Microsoft Corporation. All rights reserved.

Microsoft, Xbox, Xbox 360, Xbox LIVE, the Xbox logos, and the Xbox LIVE logo are trademarks of the Microsoft group of companies.

中文

Xbox 360 同步充電套件

感謝您購買 Xbox 360 同步充電套件。您的同步充電套件可讓您在電池組充電時仍可進行遊戲。它僅可與 Xbox 360 無線控制器和 Xbox 360® 視訊遊戲家庭娛樂系統搭配使用。

Xbox 360 同步充電套件功能：

- 可充電式鎳氫電池組，充電後可使用長達 35 小時。
- 電池電量會顯示在 Xbox 快顯功能表上。
- 充電時仍可繼續進行遊戲。

⚠ 警告

在使用此產品前，請閱讀本手冊與 Xbox 360 手冊，以取得重要的安全和健康資訊。請妥善保存所有手冊，以供未來參考之用。如需更換手冊，請至 www.xbox.com/support 網站。

亞太國家/地區專用 (澳大利亞除外)

有限瑕疵擔保網址 www.xbox.com/warranty

⚠ 可充電式電池的安全

請認明具有與 Xbox 360 相容商標且經過 Microsoft 核准的可充電式電池組，來與您的無線控制器和充電纜線搭配使用。使用未經核准的電池組可能導致灼傷、火災或爆炸等意外危險。

電池使用不當可能會導致電池液體外洩、過熱或爆炸。外洩的電池液具有腐蝕性而且可能具有毒性。若其接觸到皮膚與眼睛將會導致灼傷，如果吞嚥也會導致傷害。若要降低傷害的風險：

- 僅使用 Xbox 360 同步充電套件、Xbox 360 快速充電套件或其它 Microsoft 核准的充電器進行充電。
- 請將電池放置於孩童拿不到的地方。
- 請勿加熱、開啟、穿刺、拆解或將電池置於火中。
- 若電池的電解液漏出，請立即將電池取出，並避免您的皮膚或衣物接觸到外洩的電解液。若皮膚或衣服接觸到電池的化學液體，請立即用清水加以沖洗。在放入新電池之前，請用濕紙巾將控制器確實清理乾淨。
- 請依照當地與全國廢棄物處理規定 (若有的話) 加以回收或處理使用過的電池。
- 若電池已無法使用，或將長時間不使用控制器，請移除電池。
- 請勿讓金屬物品觸碰電池終端，這會讓它們變燙並可能導致燃燒。例如，勿將電池放在有鑰匙或銅板的口袋中。

⚠ 避免讓 Xbox 360 主機掉落

如果 Xbox 360 主機掉落並擊中其他人，尤其是小孩，將會造成嚴重傷害。若要降低這些傷害和對 Xbox 360 造成損壞的風險：

- 請盡量使用您的無線控制器。
- 如果在充電時同時進行遊戲，請務必整理所有的纜線，確保其他人或寵物在該區域走動時不會意外地被絆倒。
- 電池組正在充電或存放充電纜線時，勿讓兒童與寵物接觸到充電纜線。
- 如不使用充電設備時，請從主機中斷充電纜線與控制器的連接。

