



HARD DRIVE TRANSFER CABLE

硬碟傳輸線

하드 드라이브 전송 케이블



0511 Part No. X16-84287-02
Printed in China

ENGLISH

Xbox 360 Hard Drive Transfer Cable

The Xbox 360® Transfer Cable lets you transfer content from an original Xbox 360 Hard Drive to any Xbox 360 hard drive.

IMPORTANT

The transfer procedure in this manual will only work if your console has a current console update. Get the latest update by signing in to Xbox LIVE or by downloading it from the console update area at www.xbox.com/support.*

NOTE

Movie rentals downloaded (where the service is available) from Xbox LIVE are not available after content transfer. If you have movie rentals, watch them before beginning the transfer.

Transfer Content from Your Old Hard Drive to a New Hard Drive

When you transfer content from your old hard drive to a new hard drive, every file that can be transferred will be erased from the old drive and added to the new one.

NOTE

As with any data transfer process, there is a risk that some or all of your content may become lost during the transfer process. If you proceed with the data transfer process, you do so at your own risk and you agree that Microsoft is not liable for any loss of content resulting from the transfer process.

To transfer content to your new hard drive:

- 1 If your old hard drive is still attached to a console, turn off the console, and then remove the drive as shown in the console or hard drive instructions.
- 2 If your new hard drive came attached to a console, skip to step 3. If your new hard drive is not attached, attach it to the console as described in the hard drive instructions.
- 3 Connect the console to your TV or monitor as shown in the console instructions.
- 4 Turn on the console.
- 5 Connect and turn on a controller.
- 6 Connect one end of the transfer cable to your old hard drive.
- 7 Connect the other end of the transfer cable to the front, outside USB port on your console.
- 8 Wait until the content transfer message appears on the screen, and then choose the option to transfer content to your console. Your old hard drive becomes the source device, and your new hard drive is the destination device.
- 9 To transfer all items, just start the transfer.
- 10 When the transfer is complete, disconnect the transfer cable from the console and hard drive.

IMPORTANT

The transfer cable connects to the old hard drive in only one orientation. Do not force the connector on. Connect the cable in the orientation shown.

If you don't have enough space on your new hard drive for all content, you'll need to select fewer items to transfer before you can start. To do this, choose a category from the source content list and clear the items you don't want to transfer. Items that are not selected remain on the old hard drive and are not transferred.

Alternatively, you can clear some space on the new hard drive by backing out of the content transfer area, going to the system memory area, and selecting the new hard drive. Then you can delete some items or move them to a flash drive or other USB storage device that has been configured for Xbox 360 storage. To start the transfer process again, unplug the transfer cable from the console and plug it in again.

For more information about hard drive content transfer and configuring USB storage devices, visit www.xbox.com/support.

NOTES

- Depending on the amount of content to be moved, the transfer process can take more than an hour.
- The Xbox 360 Transfer Cable is not a PC accessory. It is intended only for connecting an original Xbox 360 Hard Drive to an Xbox 360 console for content transfer. Damage to your PC or other USB device could occur if you connect the transfer cable to such devices.
- The transfer cable is intended only for transferring content from your original hard drive to your new hard drive through your console. It is not intended for long-term connection to your console, nor is it intended for use with any other USB host or device. Dispose of the cable in accordance with the Disposal of Waste Batteries and Electrical & Electronic Equipment guidelines in this manual.
- The transfer cable cannot be used to connect multiple hard drives to your console.
- The Xbox Guide is not available during content transfer.

中文

Xbox 360 硬碟傳輸線

Xbox 360® 傳輸線可讓您將內容從原有的 Xbox 360 硬碟轉移到任一個 Xbox 360 硬碟上。

重要事項

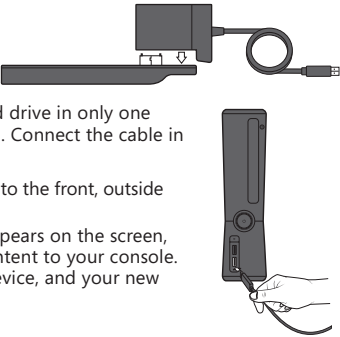
本手冊的傳輸步驟僅可用於目前已進行過更新的主機上。請登入 Xbox LIVE 進行更新，或從 www.xbox.com/support 下載更新。

將內容從舊硬碟轉移到新硬碟

當您將內容從舊硬碟轉移到新硬碟時，所有可轉移的檔案將會加入到新硬碟中並從舊硬碟裡刪除。

注意

就任何資料轉移程序而言，您的內容在轉移期間可能有遺失的風險。如果您繼續進行內容轉移程序，則須自負風險，並同意 Microsoft 對於轉移程序中造成的資料遺失概不負責。



- The same content can't be stored on two hard drives simultaneously. You can, however, put copies of the same content on multiple drives using the standard procedures for doing so, such as saving games in progress and downloading content from Xbox LIVE Marketplace.
- To speed performance, the Xbox 360 console uses some of the space on the hard drive. This means that less than the stated storage capacity will be available for your content.
- For more information about using a hard drive with your Xbox 360 console, see your Xbox 360 console instructions or visit www.xbox.com/support.

TROUBLESHOOTING

If you encounter problems, try the possible solutions provided below.


Content Transfer Message Doesn't Appear

If the content transfer message doesn't automatically appear on the screen after you plug the transfer cable into the console, make sure you have the latest console update. You can get the update by signing in to Xbox LIVE or by downloading it from the console update area at www.xbox.com/support.* After updating, disconnect the cable from the USB port and plug it in again. If the message still doesn't appear, go to the system memory area, select your old hard drive (the one with the transfer cable icon next to it), and then choose to transfer content.

If You Need More Help

For answers to common questions, troubleshooting steps, and Xbox Customer Support contact information, visit www.xbox.com/support. Do not take your Xbox 360 console or its accessories to your retailer for repair. Please visit www.xbox.com/support for troubleshooting and service information.

* Download fees and charges may apply as set by your internet service provider.

**Do Not Attempt Repairs**

Do not attempt to take apart, service, or modify the Xbox 360 console, power supply, or its accessories in any way. Doing so could present the risk of serious injury or death from electric shock or fire, and it will void your warranty.

Disposal of Waste Batteries and Electrical & Electronic Equipment

This symbol on the product or its batteries or its packaging means that this product and any batteries it contains must not be disposed of with your household waste. Instead, it is your responsibility to hand this over to an applicable collection point for the recycling of batteries and electrical and electronic equipment. This separate collection and recycling will help to conserve natural resources and prevent potential negative consequences for human health and the environment due to the possible presence of hazardous substances in batteries and electrical and electronic equipment, which could be caused by inappropriate disposal. For more information about where to drop off your batteries and electrical and electronic waste, please contact your local city/municipality office, your household waste disposal service, or the shop where you purchased this product.

This product is for use with NRTL-listed (UL, CSA, ETL, etc.) and/or IEC/EN 60950 compliant (CE marked) Information Technology equipment.

For Customers in Taiwan

Product Information

Product name: Xbox 360 Hard Drive Transfer Cable
Model no.: Xbox 360 Hard Drive Transfer Cable
Designated voltage: 5 VDC
Total consumption of electric power or designated input of electric current: <2.5 W
Manufacture year: 2010
Country of origin: China
Manufacturer name: Microsoft Corporation
Importer name: Synnex Technology International
Importer's Address: 4th Fl. 75, Section 3, Min-Sheng E. Rd., Taipei 104
Importer's number: (02) 2506-3320

COPYRIGHT

Information in this document, including URL and other Internet Web site references, is subject to change without notice. Unless otherwise noted, the example companies, organisations, products, domain names, e-mail addresses, logos, people, places and events depicted herein are fictitious, and no association with any real company, organisation, product, domain name, e-mail address, logo, person, place or event is intended or should be inferred. Complying with all applicable copyright laws is the responsibility of the user. Without limiting the rights under copyright, no part of this document may be reproduced, stored in or introduced into a retrieval system, or transmitted in any form or by any means (electronic, mechanical, photocopying, recording, or otherwise), or for any purpose, without the express written permission of Microsoft Corporation.

Microsoft may have patents, patent applications, trademarks, copyrights, or other intellectual property rights covering subject matter in this document. Except as expressly provided in any written license agreement from Microsoft, the furnishing of this document does not give you any license to these patents, trademarks, copyrights, or other intellectual property.

© 2011 Microsoft Corporation. All rights reserved

Microsoft, Xbox, Xbox 360, Xbox LIVE, the Xbox logos, and the Xbox LIVE logo are trademarks of the Microsoft group of companies.

如何將內容轉移到新硬碟：

- 如果您的舊硬碟仍然與主機相連，請關閉主機電源，然後依照主機或硬碟手冊中的指示，從主機移除舊硬碟。
- 如果您的新硬碟已安裝在主機上，請跳過步驟 3；如果您的新硬碟未安裝在主機上。請依照硬碟手冊中的指示將硬碟裝在主機上。
- 依照主機手冊中的指示，將主機接上電視或螢幕。
- 開啟主機電源。
- 連接並開啟控制器。
- 將傳輸線的一端連接到舊的硬碟。
- 將傳輸線的另一端連接到主機前方，靠外側的 USB 埠。
- 等到畫面上出現內容轉移的訊息後，選擇將內容轉移到主機的選項。這時舊硬碟會成為資料來源裝置，而新硬碟則為目的地裝置。
- 若要轉移所有項目，只要執行轉移動作即可。
- 完成轉移後，請將傳輸線從主機及硬碟上拔除。

重要事項

傳輸線只能以單一方方向連接到舊硬碟。請勿強行裝上連接器。請以指示的方向來連接傳輸線。

