

Microsoft® Business Intelligence

Kristina Kerr

Intelligence Delivered Through SharePoint Server

Sr. Product Manager, BI
Microsoft

Agenda

SharePoint Server Application integration

- Report Center
- Reporting Services
- ProClarity
- PerformancePoint Server
- Excel Services

What does it take to deliver on the promise?

Connectivity, Interoperability
and Integration
– work with what you
have, and innovate for the
next generation

Business Intelligence Adoption Challenges

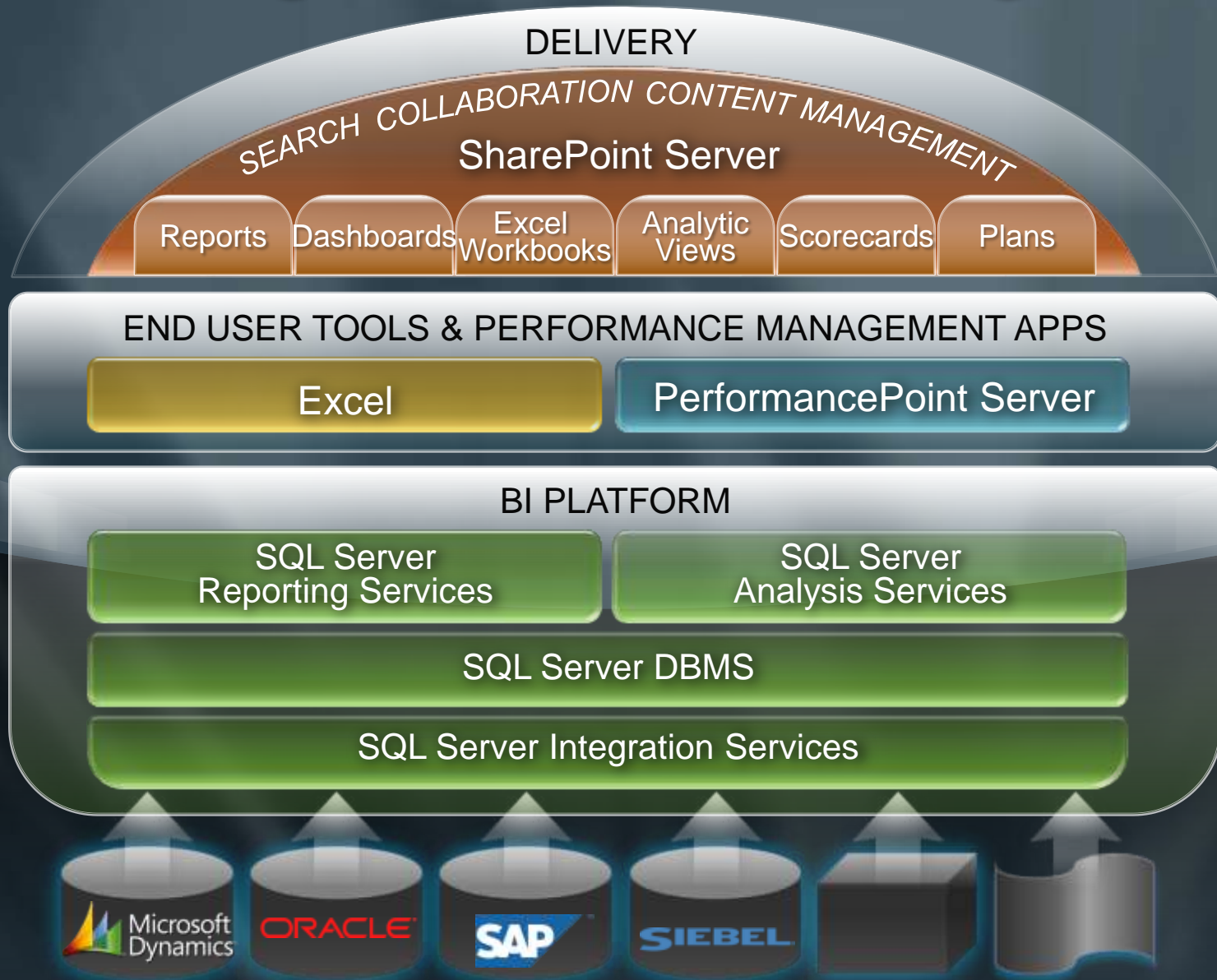
- Users lack necessary skills
- TCO is high
- Difficult to learn and use
- Insight to action gap

Sources:

- Gartner: The Business Intelligence Market Trends and Directions, 2006



Our Integrated BI Offering



Integrated Capabilities to Streamline Collaborative Work

BI for the Masses

Server-based Excel spreadsheets and data visualization, Report Center, BI Web Parts, KPIs/Dashboards, data source connectivity

Collaboration in Context

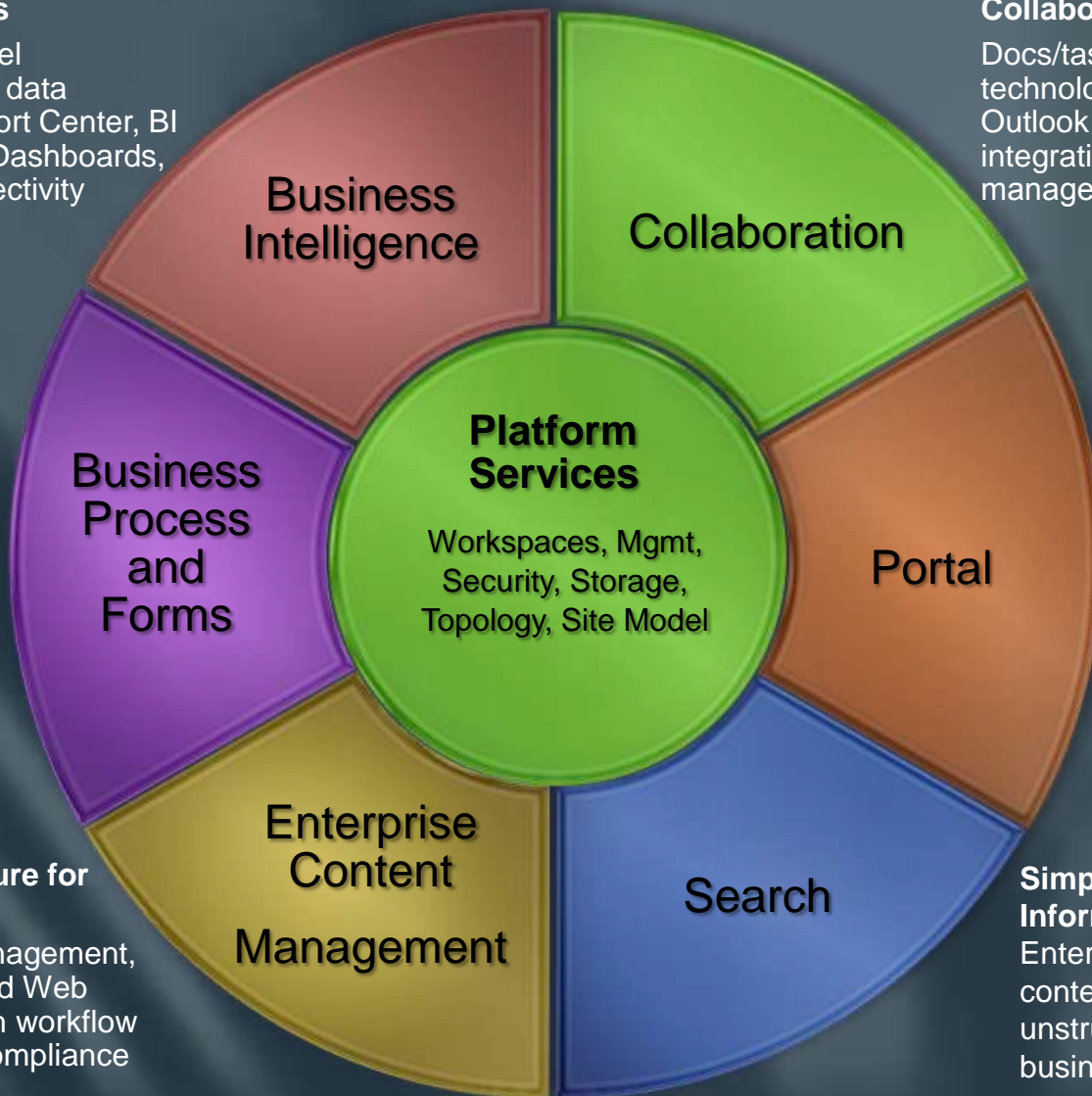
Docs/tasks/calendars, Web 2.0 technologies (blogs, wikis, RSS), Outlook and real-time presence integration, offline docs/lists, project management "lite"

Business Process Automation and Data Collection

OOB workflows, WF Integration, Rich and Web forms based front-ends, metadata and taxonomy management, pluggable SSO

Easy to Use Infrastructure for Content Management

Integrated document management, records management, and Web content management with workflow and policies to support compliance



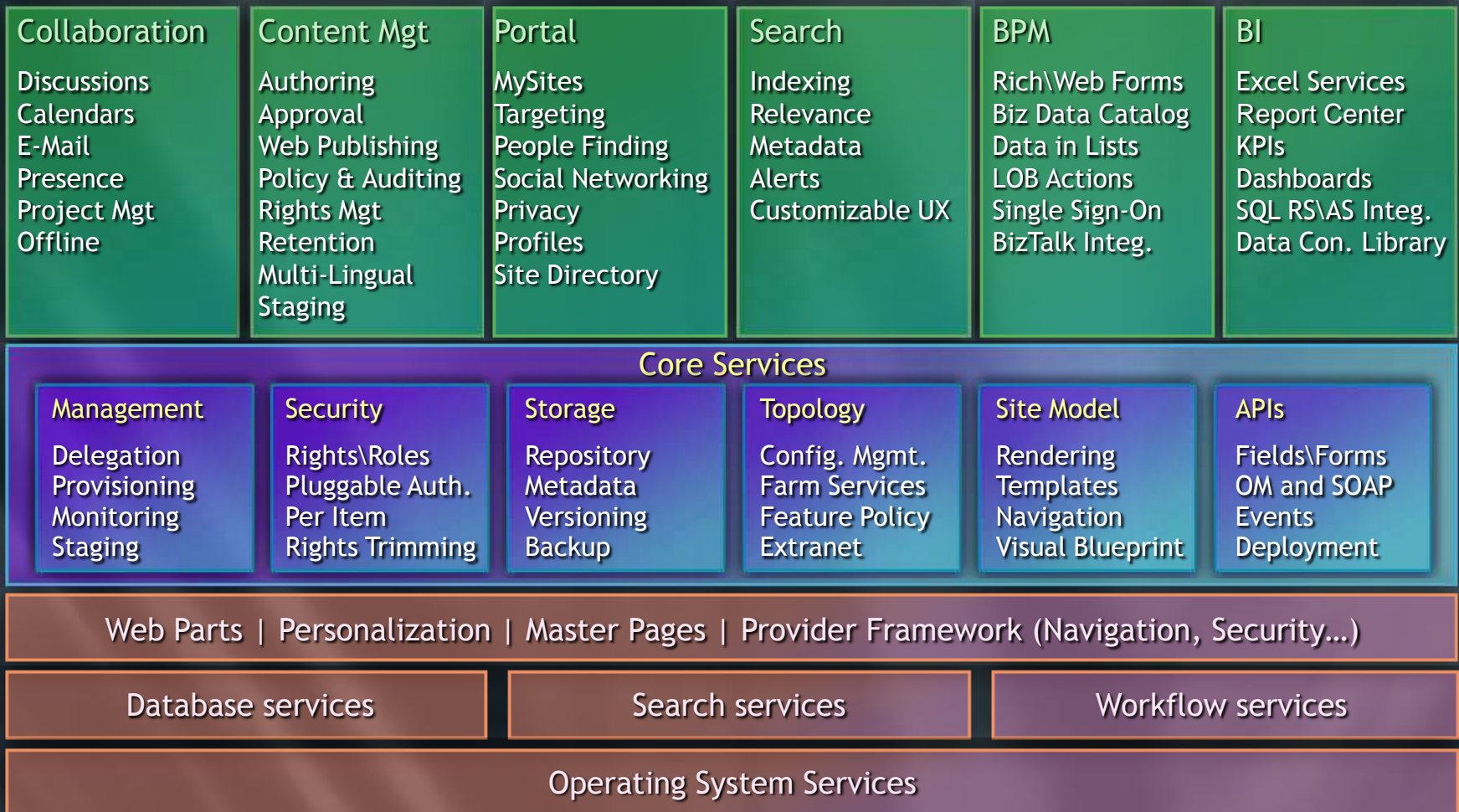
Single Platform to Manage your Intranet, Extranet, and Internet

Enterprise portal template, Site Model, Customizable interactive workspaces for individuals and teams, governance, privacy and security controls

Simplified access to Information and Expertise

Enterprise scalability, contextual relevance, rich unstructured, people and business data search

SharePoint Architecture



SharePoint BI Web Parts

in MOSS 2007

• Types of Business Data Web Parts

Web Part	Description
Business Data List Web Part	Displays a list of entity instances from a business application registered in the Business Data Catalog. For example, you can use a Business Data List Web Part to display the customers or orders from the AdventureWorks database.
Business Data Item Web Part	Displays the details of an entity instance from a business application. For example, you can use a Business Data Item Web Part to display the details of a particular customer or order from the AdventureWorks database.
Business Data Related List Web Part	Displays a list of related entity instances from a business application. For example, you can use a Business Data Related List Web Part to display all the orders for a particular customer from the AdventureWorks database.
Business Data Actions Web Part	Displays a list of actions associated with an entity as defined in the Business Data Catalog. For example, you can use a Business Data Actions Web Part to display all the actions that portal users can perform on the Customer entity. Some examples of these actions are to send an e-mail message to a customer or to edit the address of a customer.
Business Data Item Builder Web Part	Creates a Business Data item based on parameters in the query string and provides it to other Web Parts.

Report Center

Rich Integration Point

SharePoint Site Templates for Sites and Subsites

- Reporting Services
- Excel Services
- Excel 2007
- Data Connection Libraries
- All Document Management features of MOSS 2007
 - Check-in/out, version history and control, workflow integration, publishing capabilities, ...

Reporting Services Integration in 2006

Web Part Page - Microsoft Internet Explorer

File Edit View Favorites Tools Help

Back Forward Stop Home Search Favorites

Home Documents and Lists Create Site Settings Help

Reports

Modify Shared Page

Shared Documents

Type	Name	Modified By
	Sales Presentation NEW	PASSDEMO\administrator
	Sales Commissions NEW	PASSDEMO\administrator
	Test Procedures NEW	PASSDEMO\administrator
	Reports	PASSDEMO\administrator

[Add new document](#)

Report Explorer

Home Report Builder

Type	Name	Subscription	Description	When Run
	Company Sales		Adventure Works sales by quarter and product category. This report illustrates the use of a matrix data region that provides drilldown from summary data into detail data by showing and hiding rows. This report also illustrates the use of background images.	
	Employee Sales Summary		Adventure Works sales for an individual employee. This report includes Sales Comparison and Current Month Sales Comparison charts in addition to a Current Month Order Summary table with drillthrough to individual orders. This report illustrates the use of multiple datasets, charts, tables, drillthrough, and dynamic parameters.	
	Product Catalog		Adventure Works full product catalog with pictures. This report illustrates the use of embedded images, database images, page breaks, page footers, tables, conditional formatting, and a document map.	
	Product Line Sales		Adventure Works top five sales people and stores. This report illustrates a dataset with queries containing the TOP clause. It also illustrates the use of tables, charts, parameters, calculated fields, and drillthrough links.	

Report Viewer

1 of 1 100% Find | Next Select a format Export

Local intranet

SSRS & SharePoint Integration Today

- Seamless integration with SharePoint Document Library in Office SharePoint Server 2007
 - Report server namespace and security is hosted in WSS content database
 - SharePoint database stores Report Server reports, data sources, models, resources etc.
 - Report Server database used for additional metadata (schedules, caching, subscriptions)
 - Enables collaboration, workflow, versioning

SSRS & SharePoint Integration

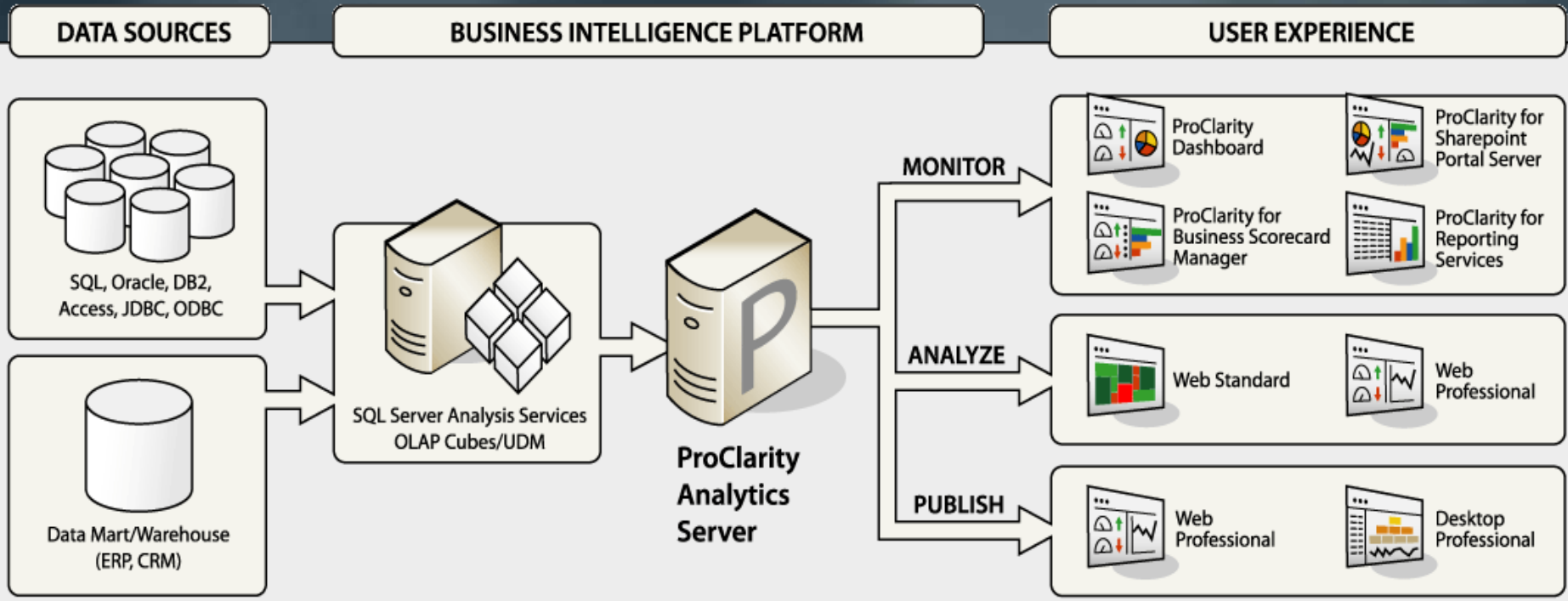
- Centralized user interface for Report Management through Office SharePoint Server 2007
 - Upload, manage, render and deliver Reports all through Office SharePoint Server 2007 UI
 - Administration using Office SharePoint Server 2007
- Rich reporting experience to “light up” Office SharePoint Server 2007
 - Filter web parts enhancing dashboards in Office SharePoint Server 2007

ProClarity

Simple, Powerful, Adaptable Interface to Insight

- ProClarity Analytics **simplifies** how people receive and gain insight into their data
- ProClarity Analytics provides organizations with the tools to conduct **powerful** analytic modeling
- ProClarity Analytics works within your existing business and technical infrastructure and it **adapts** with your organizations ongoing needs

ProClarity Analytics



Excel On Servers

Customer needs and challenges

- Multiple versions of the truth
- proprietary information
- BI dashboard arena
- Re-coding
- Client program

Excel Services

What is it?

- Built on the SharePoint platform
- Server-side Excel calculation engine
- Browser access
- Web service access

Excel Services Overview



- Design and author
- Save to SharePoint

Microsoft Office SharePoint Server 2007

- Spreadsheet calculation and rendering
- External data retrieval and caching
- 100% calculation fidelity
- SharePoint platform

Save
Spreadsheets

View and
Interact

Export/Snapshot into Excel

Programmatic Access



- High quality web rendering
- Zero-footprint
- Interactive: Set parameters, sort, filter, explore



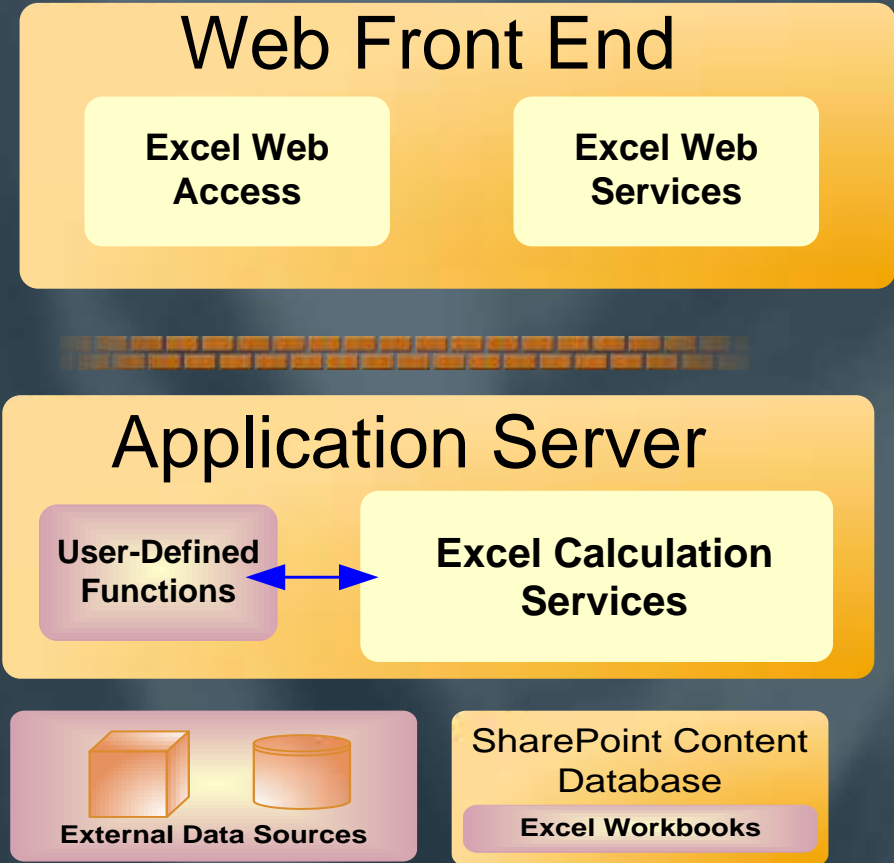
- Open in Excel for rich exploration and analysis
- Open snapshots



- Set values, perform calculations, get updated values via web services
- Retrieve full workbook file

Excel Services Architecture

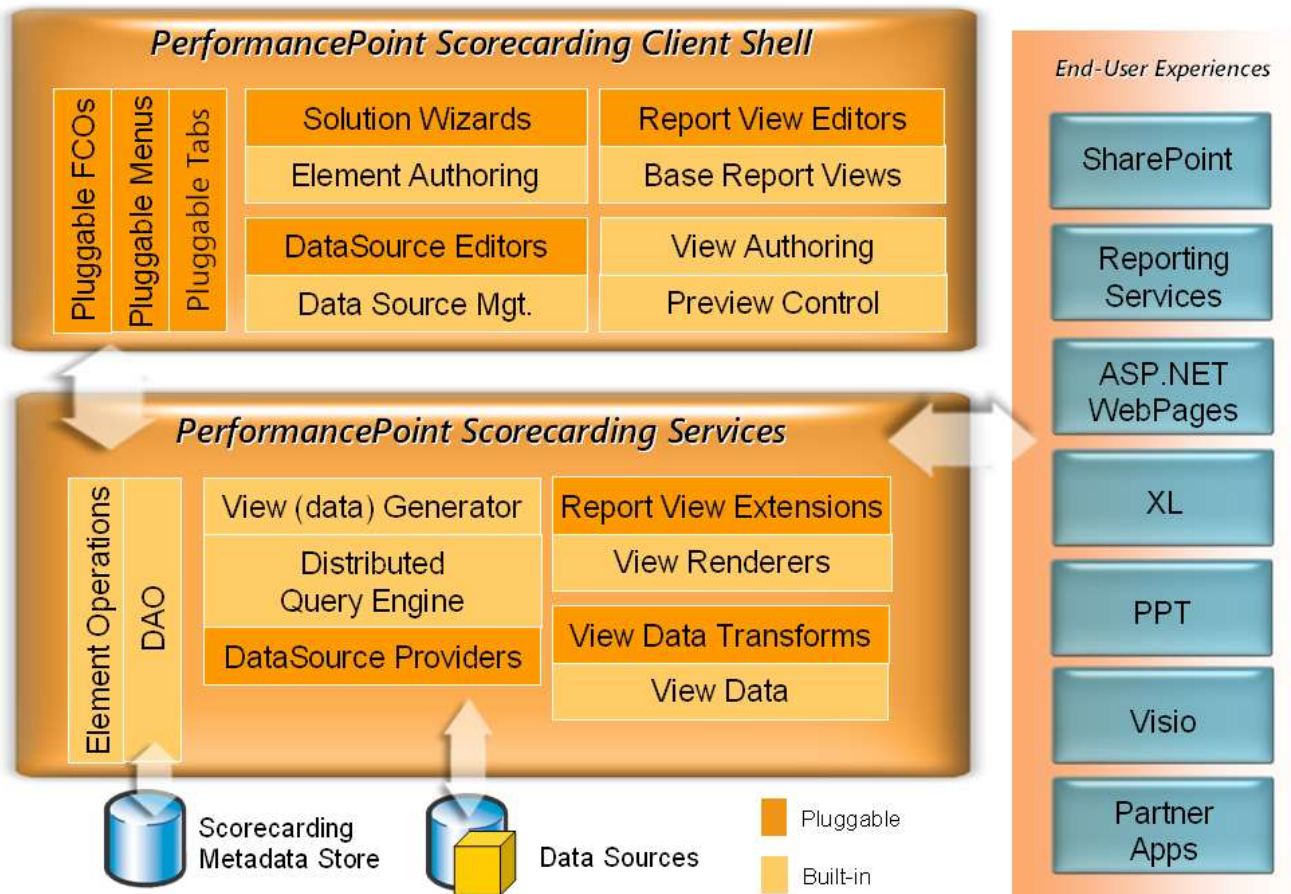
- Web front-end
 - SharePoint UI
- Application server
 - Maintains state
 - Caching
- SharePoint Server 2007
 - Solution platform
 - Store
 - Management
 - Security
- Single box or multi-tier
- Independent scale-out



Office PerformancePoint Server

Powerful Architecture with support for extensibility and customization

Extension Framework Architecture



Analysis Services Integration

- OLAP Data Exposed through
 - Reporting Services via SharePoint Webparts
 - OLAP navigation through Performance Point, Excel Services, ProClarity, etc.
 - Sharepoint KPI lists stored in SQL AS
- DataMining Data Exposed through
 - Data Mining sourced Reporting Services
 - Use Excel Addins and then publish results to Excel server (e,g, tables, pivot charts,etc)
 - Use sample web controls (naïve bayes, decision trees – SQL 2005 Samples)

demo

Integrated Capabilities to Streamline Collaborative Work

BI for the Masses

Server-based Excel spreadsheets and data visualization, Report Center, BI Web Parts, KPIs/Dashboards, data source connectivity

Collaboration in Context

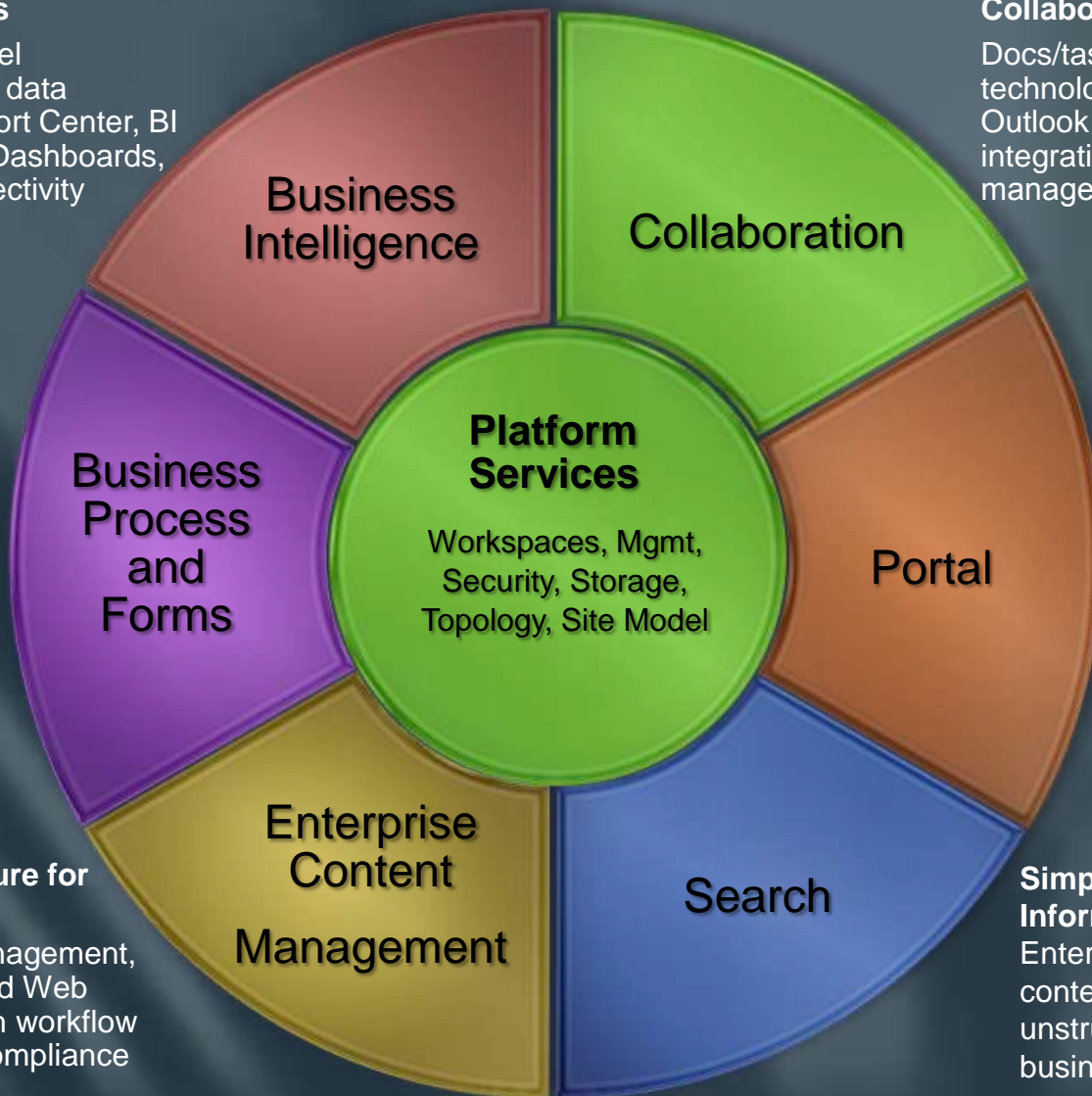
Docs/tasks/calendars, Web 2.0 technologies (blogs, wikis, RSS), Outlook and real-time presence integration, offline docs/lists, project management "lite"

Business Process Automation and Data Collection

OOB workflows, WF Integration, Rich and Web forms based front-ends, metadata and taxonomy management, pluggable SSO

Easy to Use Infrastructure for Content Management

Integrated document management, records management, and Web content management with workflow and policies to support compliance



Platform Services

Workspaces, Mgmt, Security, Storage, Topology, Site Model

Business Intelligence

Collaboration

Portal

Search

Enterprise Content Management

Business Process and Forms

Single Platform to Manage your Intranet, Extranet, and Internet

Enterprise portal template, Site Model, Customizable interactive workspaces for individuals and teams, governance, privacy and security controls

Simplified access to Information and Expertise

Enterprise scalability, contextual relevance, rich unstructured, people and business data search

SharePoint is a Broad Platform

Industry Standard for Portal Integration

- Reporting, Dashboards, Analytics
- Visualization
- Mapping & GIS
- KPI Lists
- BPM and .NET Integration
- Workflow Integration
- Enterprise Search
 - Breakout Session CL301
- WSRP & iView (SAP) support, ...
- LOB Integration ...

Summary

- SharePoint 2007 is a major advance in BI Portal Capabilities
 - It provides a Rich infrastructure for BI
- Microsoft BI Applications and Platform Technologies are tightly integrated with SharePoint
- SharePoint is quickly becoming an industry standard for Portals and Unified Communication/Collaboration
 - Strong 3rd party support and extensibility
 - Powerful Web Part and Web Services Support for flexible application integration

תודה

Dziękuję

Takk

Kiitos

谢谢

ευχαριστώ

謝謝

감사합니다

Tack

Merci

Thank You!

Dank u

Ďakujem

Спасибо

Tak

Asante

Gracias

Grazie

شكراً:

dhanayawad

Obrigado

ありがとう

Danke

Mulțumesc

Microsoft[®]

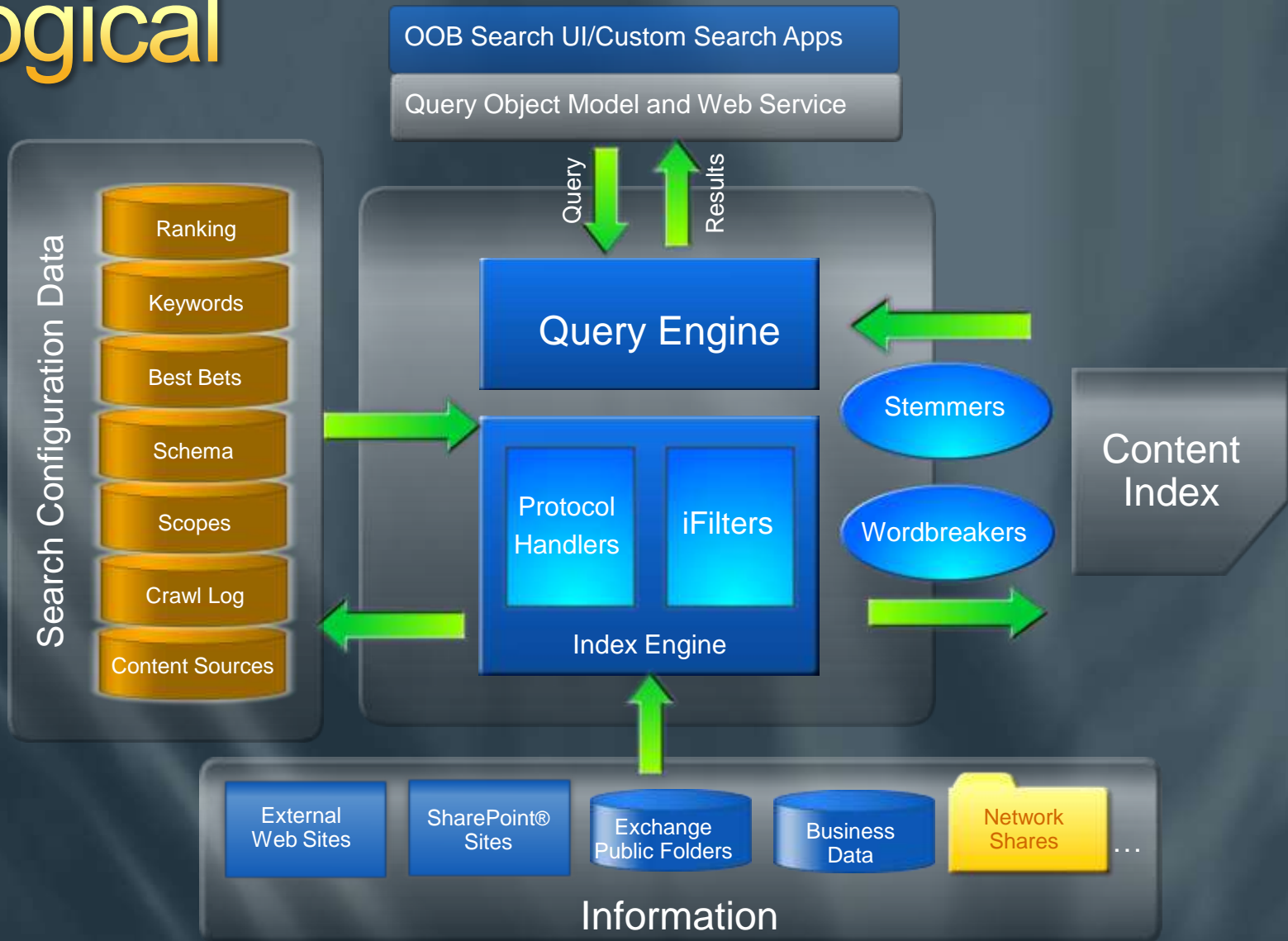
Your potential. Our passion.[™]

© 2007 Microsoft Corporation. All rights reserved. Microsoft, Windows, Windows Vista and other product names are or may be registered trademarks and/or trademarks in the U.S. and/or other countries. The information herein is for informational purposes only and represents the current view of Microsoft Corporation as of the date of this presentation. Because Microsoft must respond to changing market conditions, it should not be interpreted to be a commitment on the part of Microsoft, and Microsoft cannot guarantee the accuracy of any information provided after the date of this presentation.

MICROSOFT MAKES NO WARRANTIES, EXPRESS, IMPLIED OR STATUTORY, AS TO THE INFORMATION IN THIS PRESENTATION.

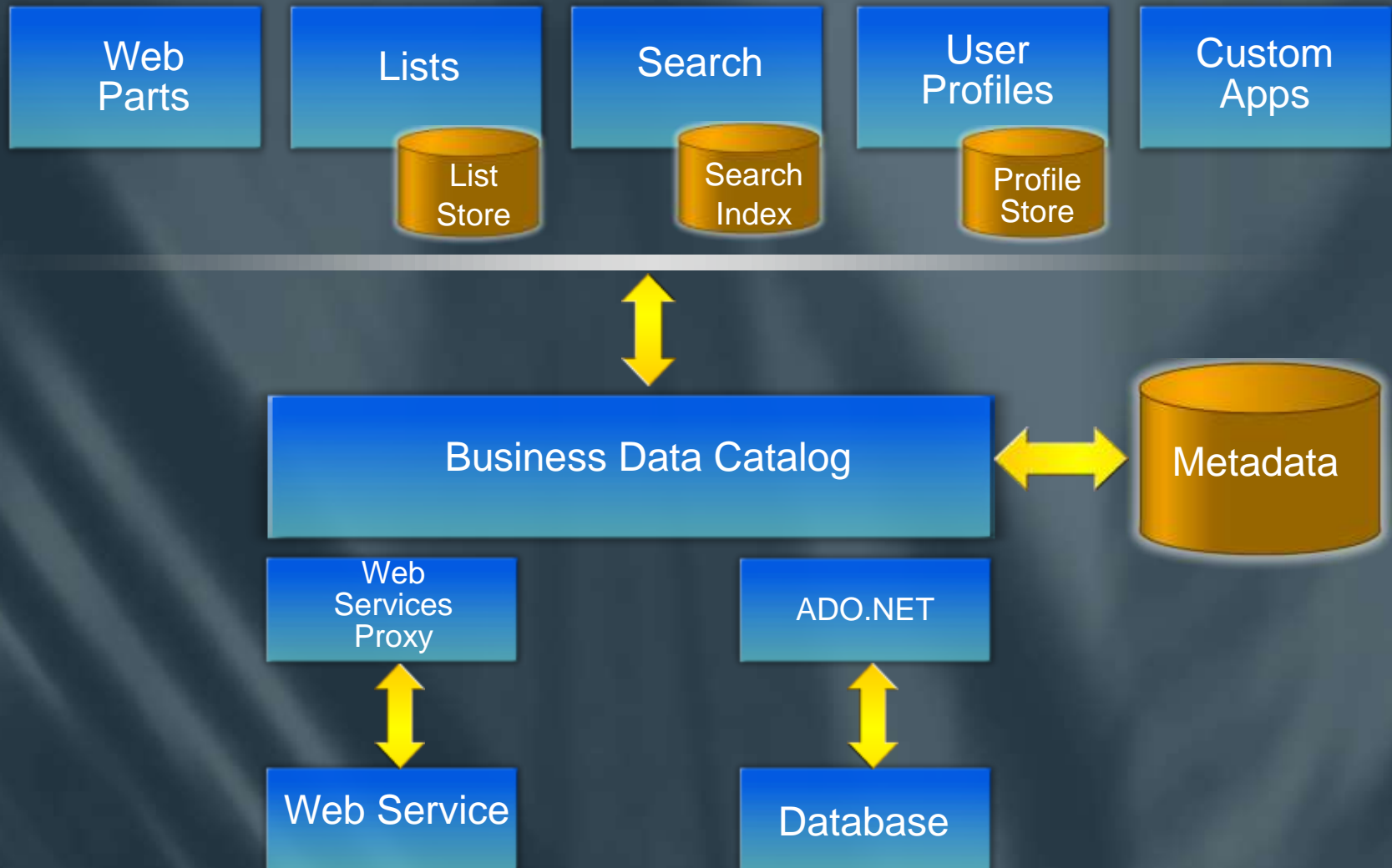
MOSS Search Architecture

Logical



Business Data Catalog (BDC)

Connects Office servers to business data



Microsoft® BizTalk® Server, SAP,
Siebel, existing, ...

Microsoft SQL Server™, Oracle, OLEDB,
Microsoft Open Database Connectivity (ODBC)