

Microsoft®

# tech·days

**15** From the Desktop to the Cloud  
**Years of Turning Vision into Value**

Hong Kong | 2012



# Configuring Hybrid the easy way

Eddie Chua (echua@microsoft.com)  
Technology Solution Specialist  
Microsoft HK Ltd.



# Session Objectives and Takeaways

- Session Objective(s):
  - Understand how the Hybrid Configuration Engine works
  - Understand the common pitfalls customers hit when they're configuring hybrid, and how to avoid them

# Agenda

- Hybrid overview
- Manually configured hybrid review
- The new SP2 deployment process
- How does the Hybrid Configuration Wizard work?
- Common deployment pitfalls

# Office 365 Migration Options

## Choices to fit your organization

### Migration

#### IMAP migration

- Supports wide range of e-mail platforms
- E-mail only (no calendar, contacts, or tasks)

#### Cutover Exchange migration (CEM)

- Good for fast, cutover migrations
- No server required on-premises

#### Staged Exchange migration (SEM)

- No server required on-premises
- Identity federation with on-premises directory

### Hybrid

#### Hybrid deployment

- Manage users on-premises and online
- Enables cross-premises calendaring, smooth migration, and easy off-boarding

	IMAP migration	Cutover migration	Staged migration	Hybrid
Exchange 5.5	X			
Exchange 2000	X			
Exchange 2003	X	X	X	X
Exchange 2007	X	X	X	X
Exchange 2010	X	X		X
Notes/Domino	X			
GroupWise	X			
Other	X			

\* Additional options available with tools from migration partners

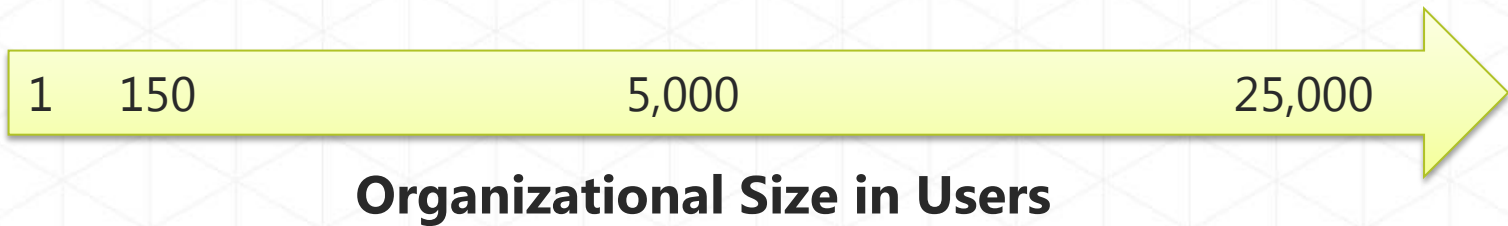
# Hybrid

## Staged Exchange Migration vs Hybrid Feature-

Feature	Staged	Hybrid
Mail routing between on-premises and cloud (recipients on either side)	●	●
Mail routing with <b>shared namespace</b> (if desired) - @company.com on both sides	●	●
<b>Unified GAL</b>	●	●
<b>Free/Busy</b> and calendar sharing cross-premises		●
<b>Mailtips, messaging tracking,</b> and <b>mailbox search</b> work cross-premises		●
<b>OWA Redirection</b> cross-premise (single OWA URL for both on-premises and cloud)		●
<b>Exchange Online Archive</b>		●
<b>Exchange Management Console</b> used to manage cross-prem relationship & mailbox migrations		●
<b>Native mailbox move</b> supports both onboarding and offboarding		●
No outlook reconfiguration or OST resync required after mailbox migration		●
<b>Online Mailbox Move</b> allows users to start logged into their mailbox while it is being moved to the cloud		●
<b>Secure Mail</b> ensure emails cross-premises are encrypted, and the internal auth headers are preserved		●
<b>Centralized mailflow control</b> , ensures that all email routes inbound/outbound via On Premises		●

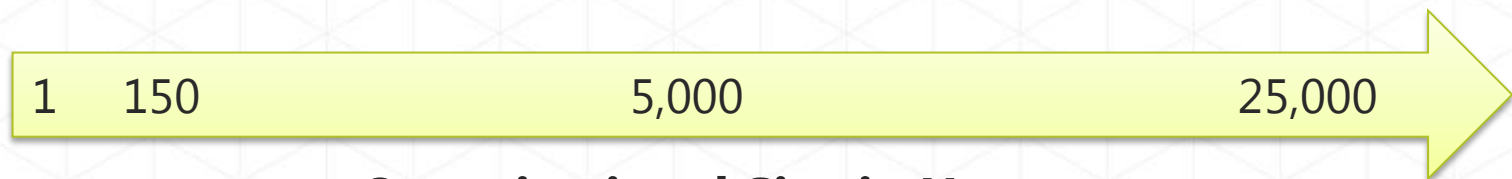
How to pick an Exchange  
migration solution?

# How to pick an Exchange migration solution?





# How to pick an Exchange migration solution?

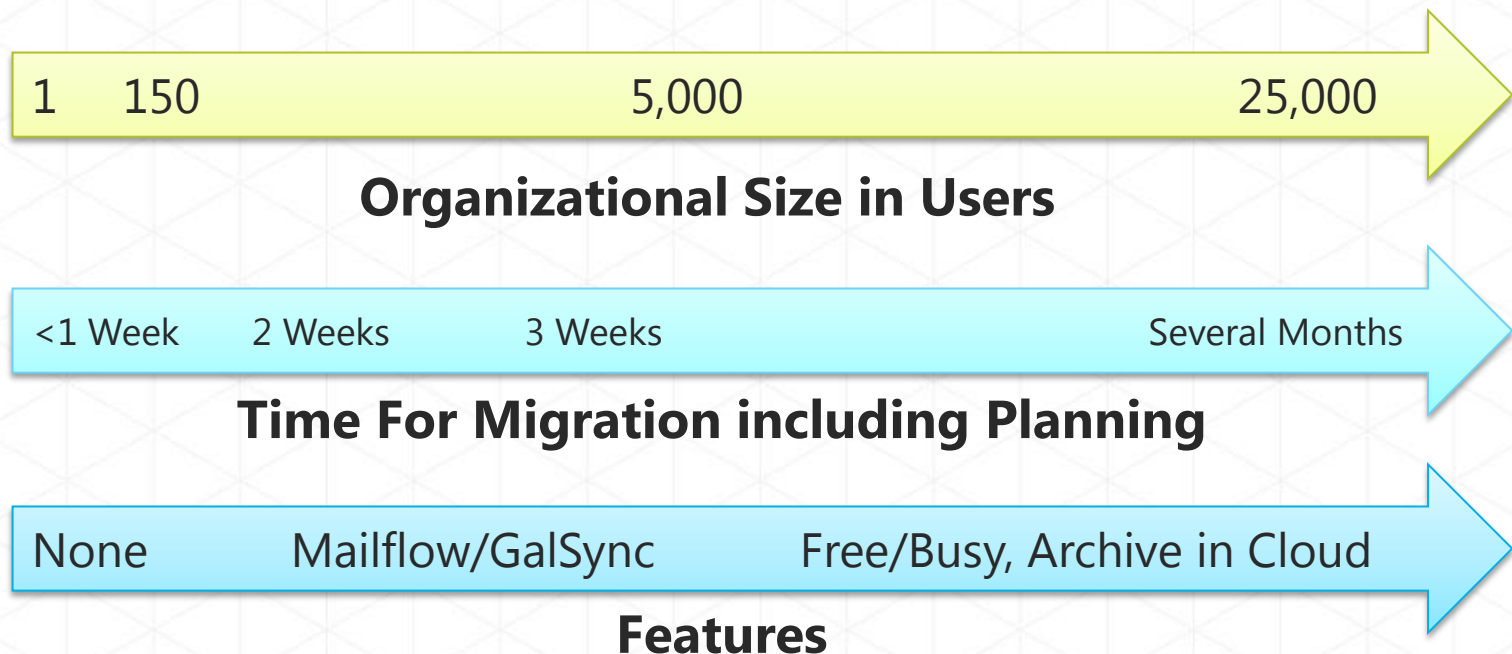


**Organizational Size in Users**



**Time For Migration including Planning**

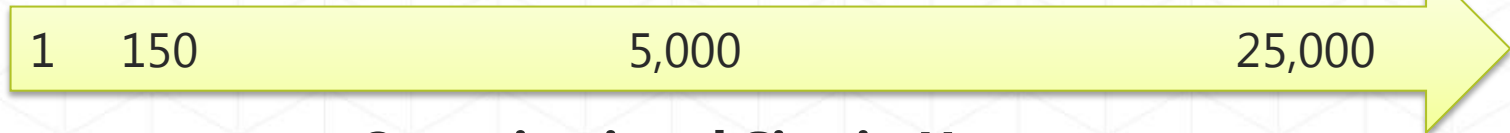
# How to pick an Exchange migration solution?



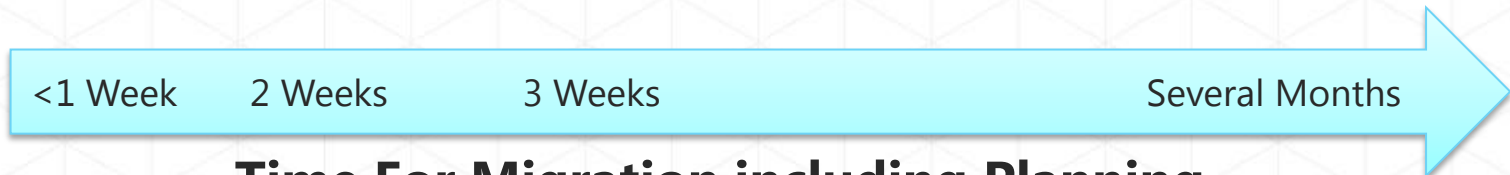
# How to pick an Exchange migration solution?

Migration Solutions

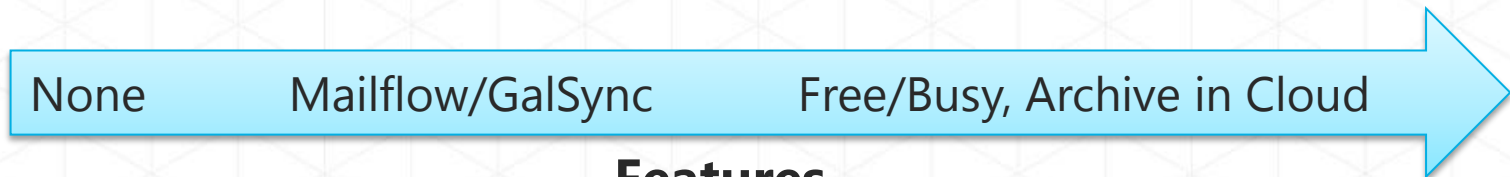
C-EM



**Organizational Size in Users**

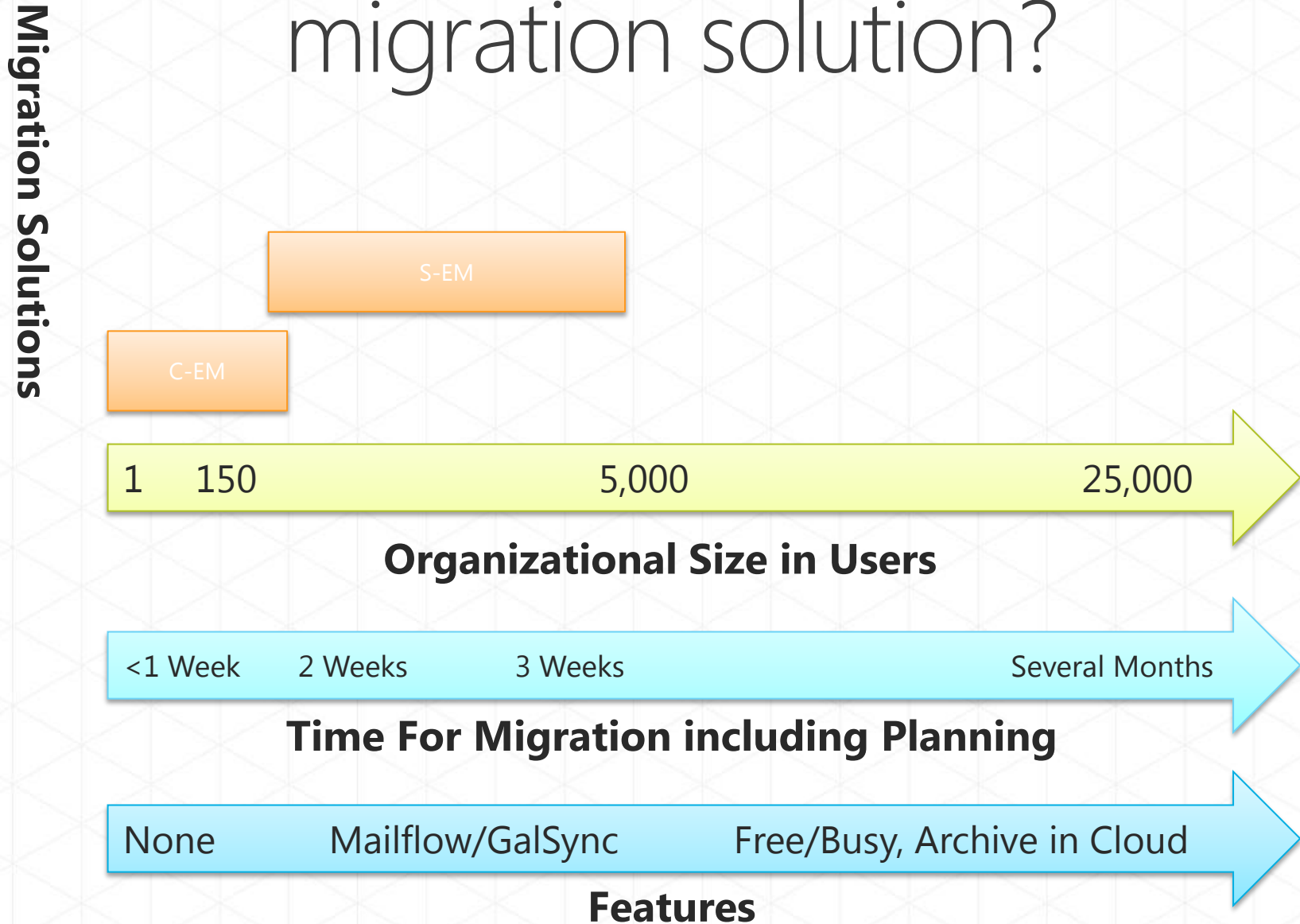


**Time For Migration including Planning**

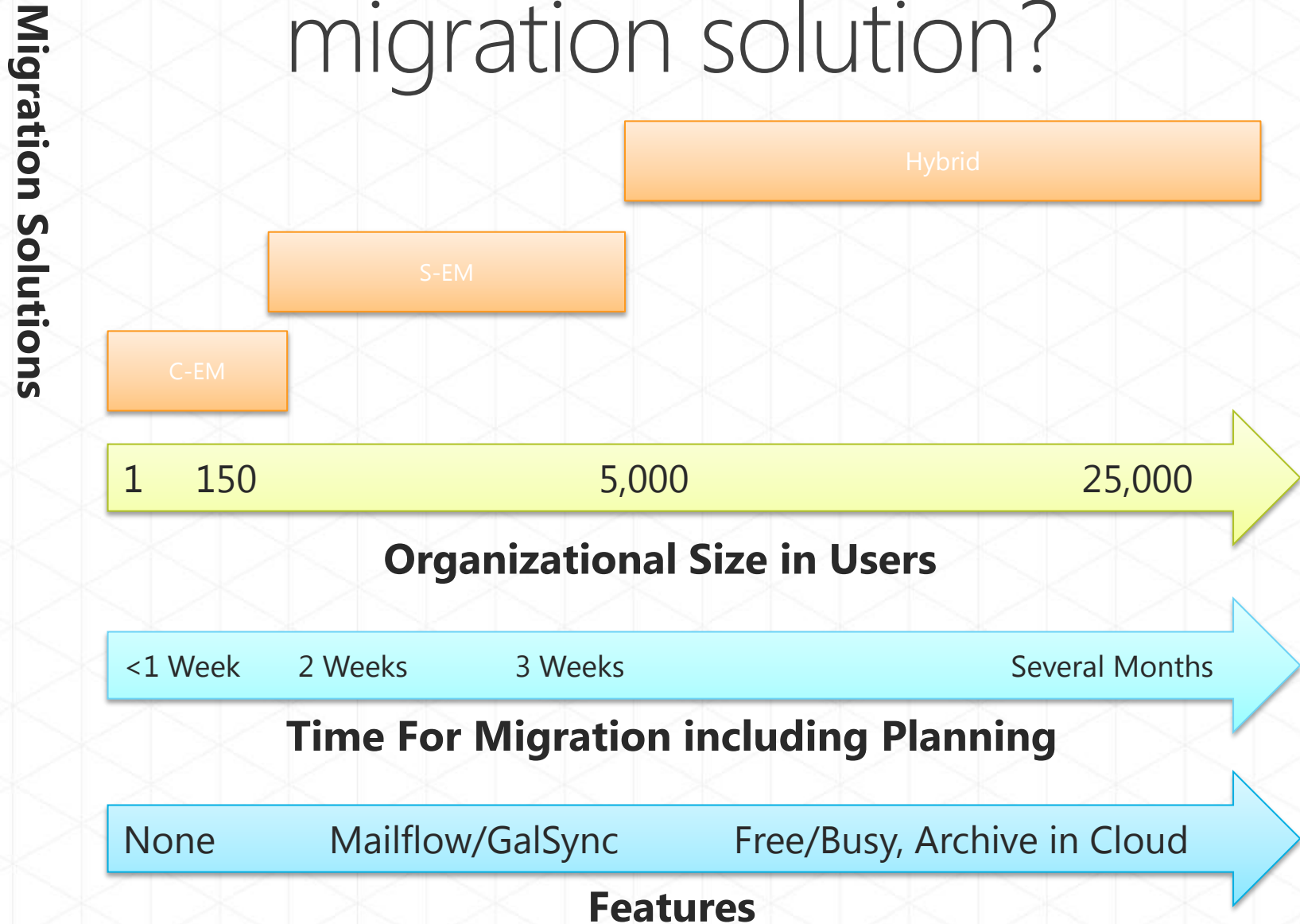


**Features**

# How to pick an Exchange migration solution?



# How to pick an Exchange migration solution?



# Hybrid

## Feature summary

**Makes your on-premises organization and cloud organization work together like a single, seamless organization**

- Offers near-parity of features/experience on-premises and in the cloud
- Seamless interactions between on-premises and cloud mailboxes
- Migrations in and out of the cloud transparent to end-user

**Features not supported:**

- Coexistence of mailbox permissions –Permissions are migrated, but do not work when Delegator and Delegate are split between on-prem & cloud
- Migration of Send As for non mailbox recipients
- Multi-forest – Only single forest source environments
- Public Folders
- Address Book Policies

# Demo

## Configure hybrid manually - review

Using Exchange 2010 SP1



# Exchange Deployment Assistant

## Exchange Deployment Assistant

<http://technet.microsoft.com/exdeploy2010>

- Currently supports manual hybrid configuration with:
  - Exchange Server 2003
  - Exchange Server 2007
  - Exchange Server 2010 SP1
- Support for the Hybrid Configuration Wizard coming soon

The screenshot shows the Exchange Server Deployment Assistant interface. At the top, there is a navigation bar with links for Exchange Help, Forums, Feedback, and About. The main content area features a welcome message: "Welcome to the Exchange Server Deployment Assistant! This tool asks you a few questions about your current environment and then generates customized instructions you can use to upgrade to Exchange 2010 on-premises or in the cloud." Below this, it prompts the user to "Select an option below to get started..." and presents three options: "On-Premises Only" (represented by a red button with a server icon), "Hybrid (On-Premises + Cloud)" (represented by a green button with a server and cloud icon), and "Cloud Only" (represented by a yellow button with a cloud and people icon). At the bottom of the interface, there is a copyright notice: "© 2011 Microsoft Corporation. All rights reserved. Release Notes | Terms of Use | Trademarks | Privacy Statement".



# SP1 Improvements

- Significant documentation improvements
- Exchange Deployment Assistant
  - Custom step by step guidance
  - Additional scenarios added over time (continually evolving)
- Fixes for Exchange federation and Exchange 2003 support delivered in SP1 RU4 and to the Exchange Online service in our regular service updates

# Hybrid deployment feedback

- Difficult and fiddly configuration process
- Lots of manual steps
- New technical concepts
- A number of different administrative tools/interfaces to go to

# Hybrid Configuration Wizard

The new SP2 process



# What's new in Exchange 2010 SP2

- **Coexistence Domain** – Replaces the requirement for the customer to create a “service.contoso.com” domain
- **Federation Trust improvements** – Removes the requirement to create a “exchangedelegation.contoso.com” domain
  - SP2 automatically prepends a well know string (“FYDIBOHF25SPDLT”) to the beginning of the account namespace.
- **Dedicated hybrid management experience**
  - Hybrid Config Wizard
  - New/Get/Set/Update-HybridConfiguration cmdlets

# What's new in Exchange 2010 SP2

- **Coexistence Domain** – Replaces the requirement for the customer to create a “service.contoso.com” domain
- **Federation Trust improvements** – Removes the requirement to create a “exchangedelegation.contoso.com” domain
  - SP2 automatically prepends a well know string (“FYDIBOHF25SPDLT”) to the beginning of the account namespace.
- **Dedicated hybrid management experience**
  - Hybrid Config Wizard
  - New/Get/Set/Update-HybridConfiguration cmdlets

**Pre-SP2:** Over 50+ manual steps

**With SP2:** Now only 6 steps, all within the UI

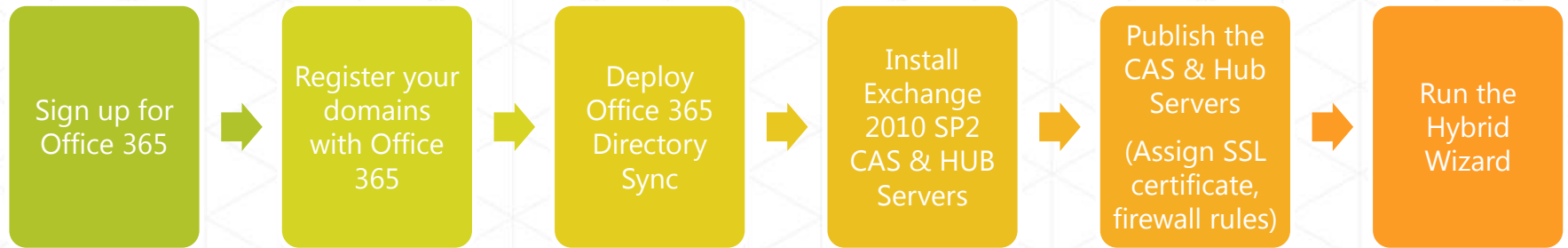
# What's new in Exchange 2010 SP2

- **Coexistence Domain** – Replaces the requirement for the customer to create a “service.contoso.com” domain
- **Federation Trust improvements** – Removes the requirement to create a “exchangedelegation.contoso.com” domain
  - SP2 automatically prepends a well know string (“FYDIBOHF25SPDLT”) to the beginning of the account namespace.
- **Dedicated hybrid management experience**
  - Hybrid Config Wizard
  - New/Get/Set/Update-HybridConfiguration cmdlets
- The wizard & cmdlets will configure the following th
  - Exchange federation trust
  - Organization relationships
  - Remote domains/accepted domains
  - Email address policies
  - Send/Receive connector
  - Forefront inbound/outbound connectors
  - MRSPProxy
  - Pre-req checks (i.e. Office365 Active Directory Sync, Exchange certificates, registered custom domains, etc...)

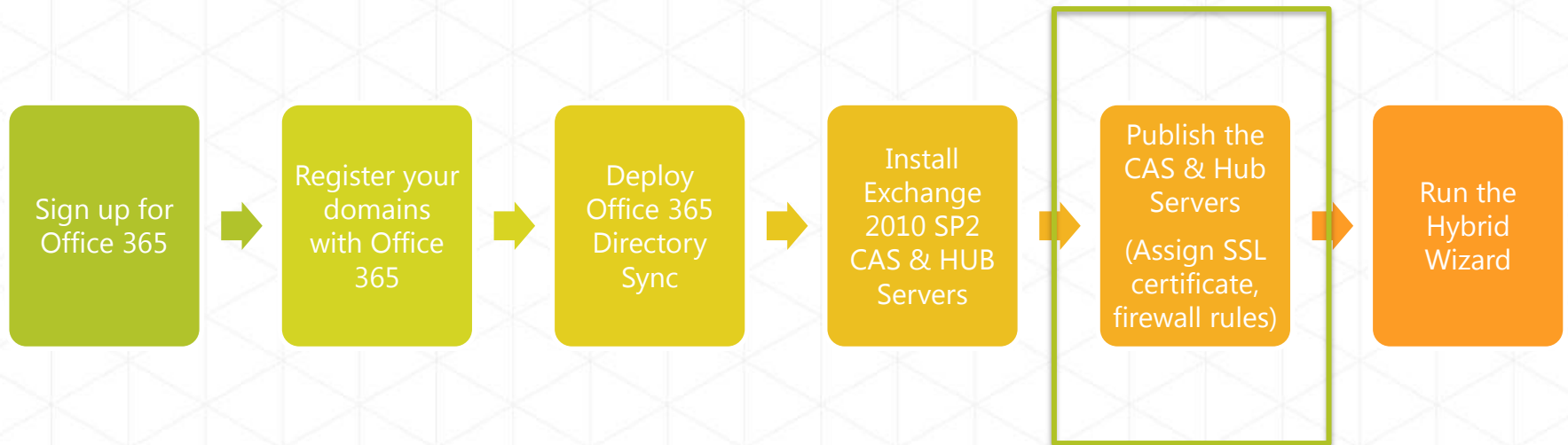
**Pre-SP2:** Over 50+ manual steps

**With SP2:** Now only 6 steps, all within the UI

# SP2 Hybrid Deployment Process



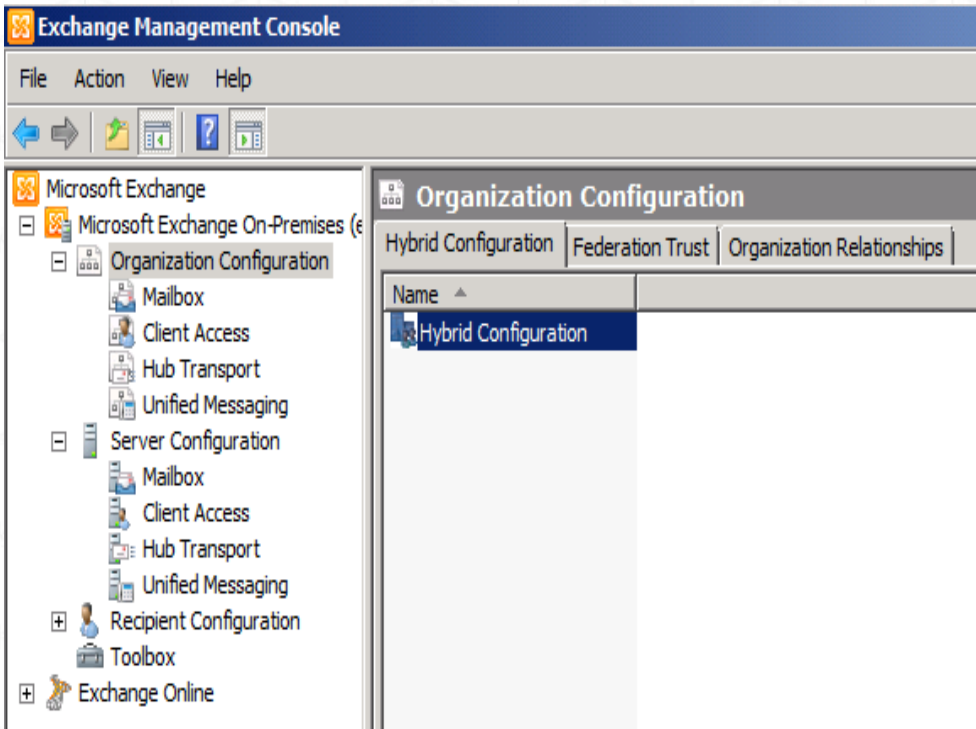
# SP2 Hybrid Deployment Process



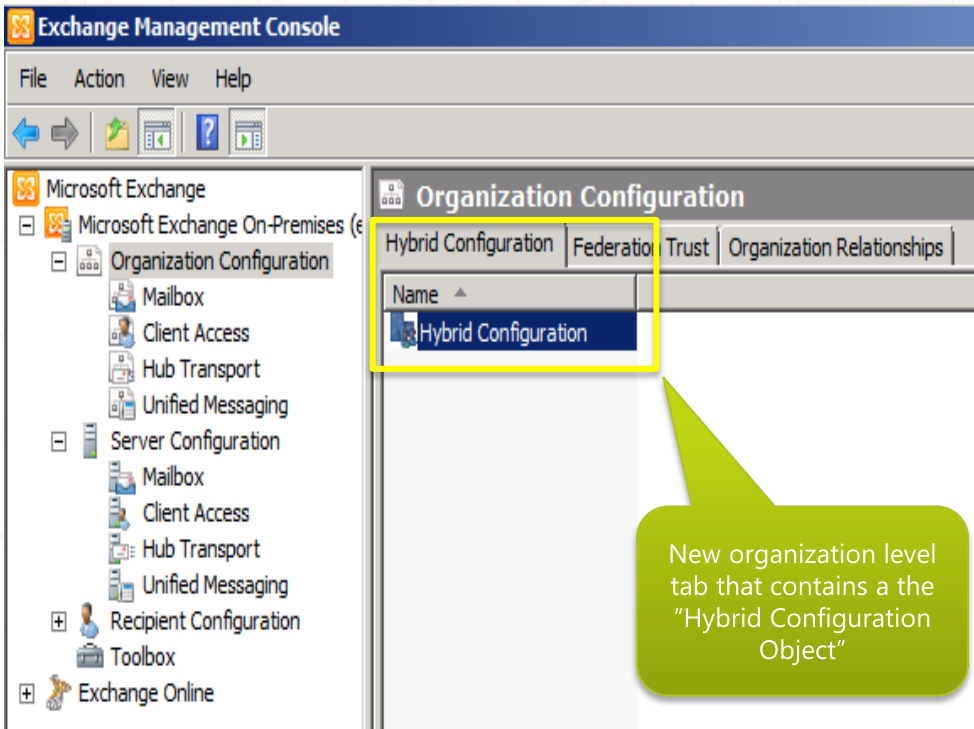
Use the Exchange  
**Remote Connectivity  
Analyzer**  
to verify this stage



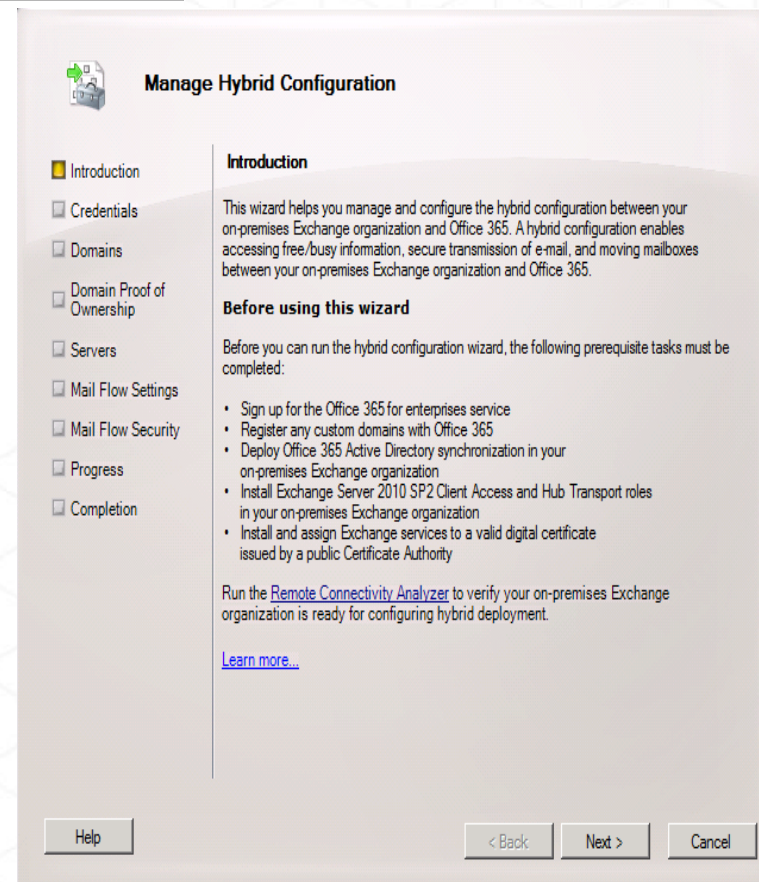
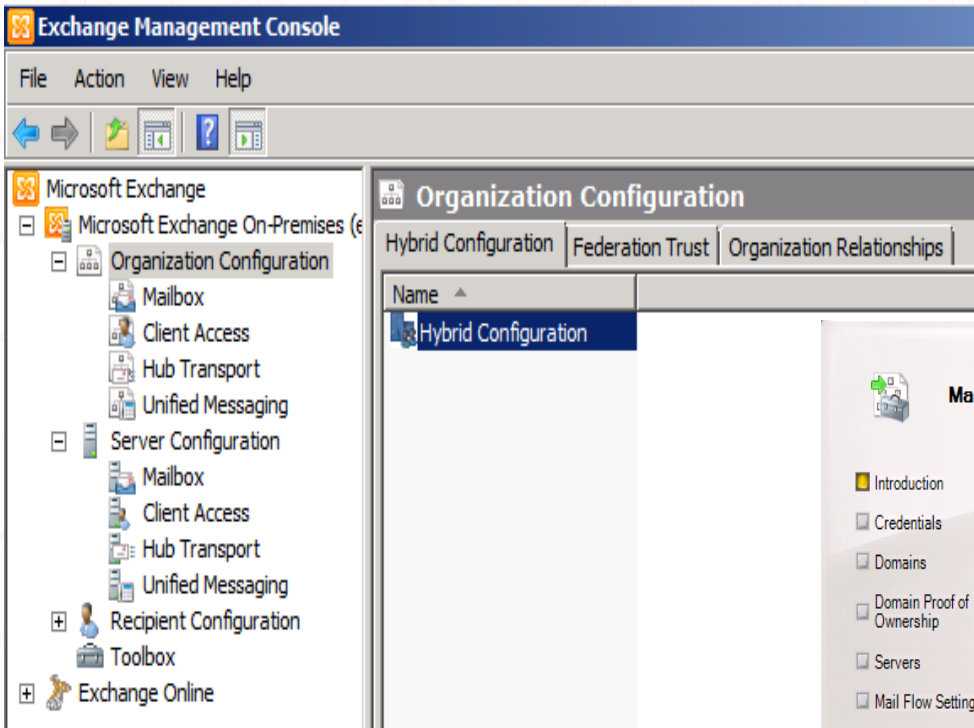
# The new Hybrid Configuration Wizard



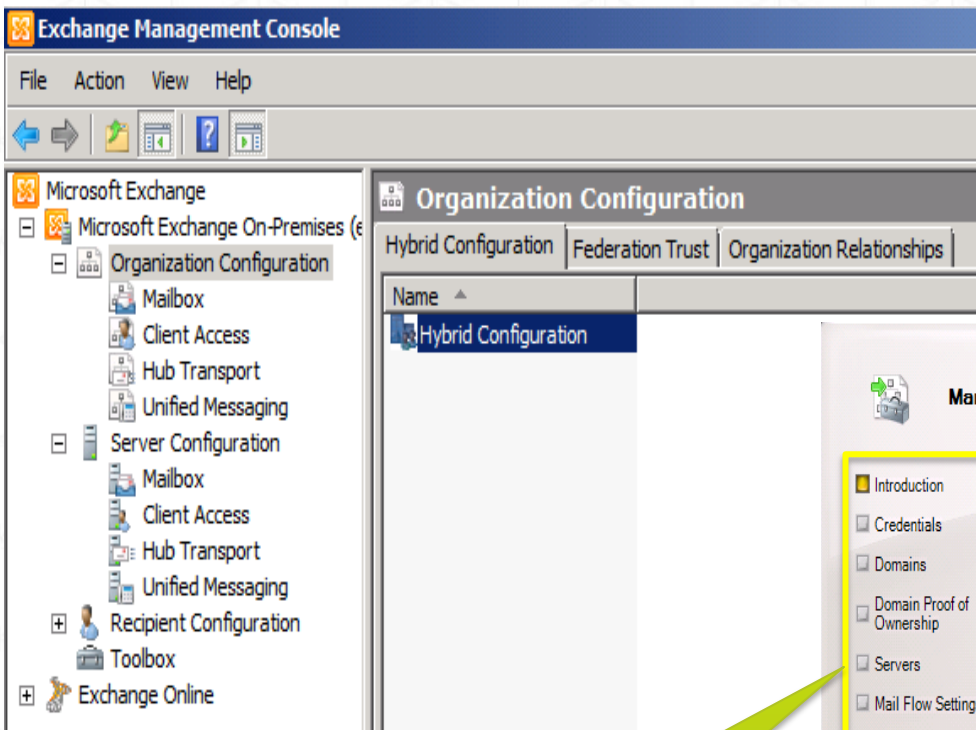
# The new Hybrid Configuration Wizard



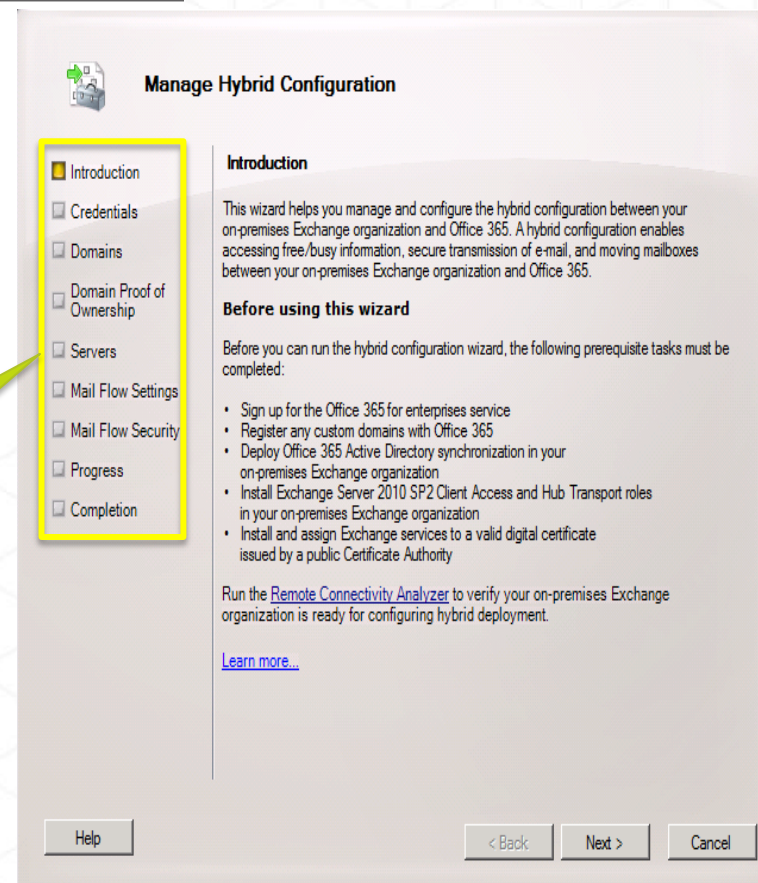
# The new Hybrid Configuration Wizard



# The new Hybrid Configuration Wizard



End to end wizard that guides you through each step of configuring hybrid

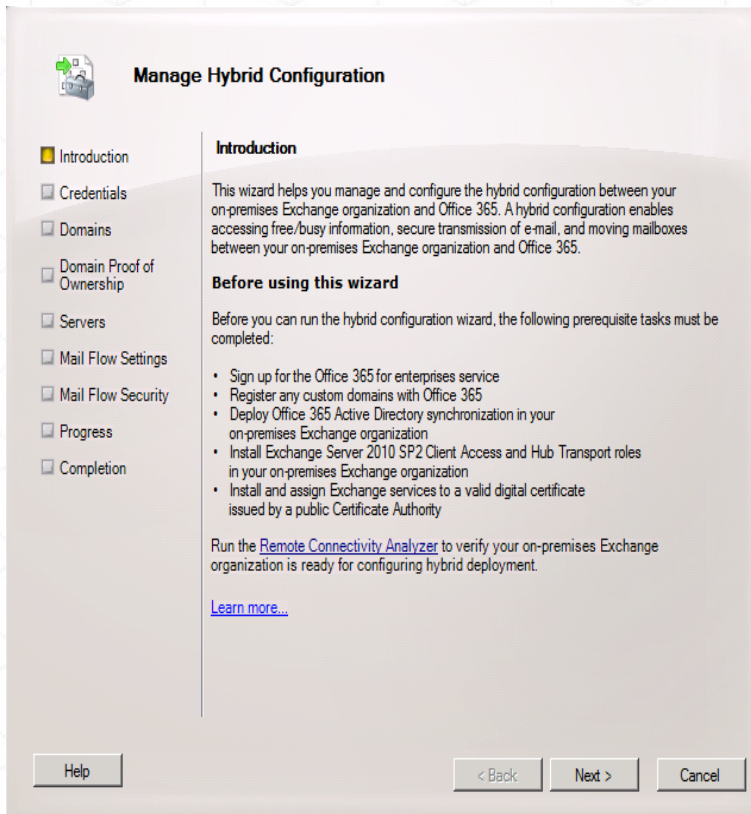


Video

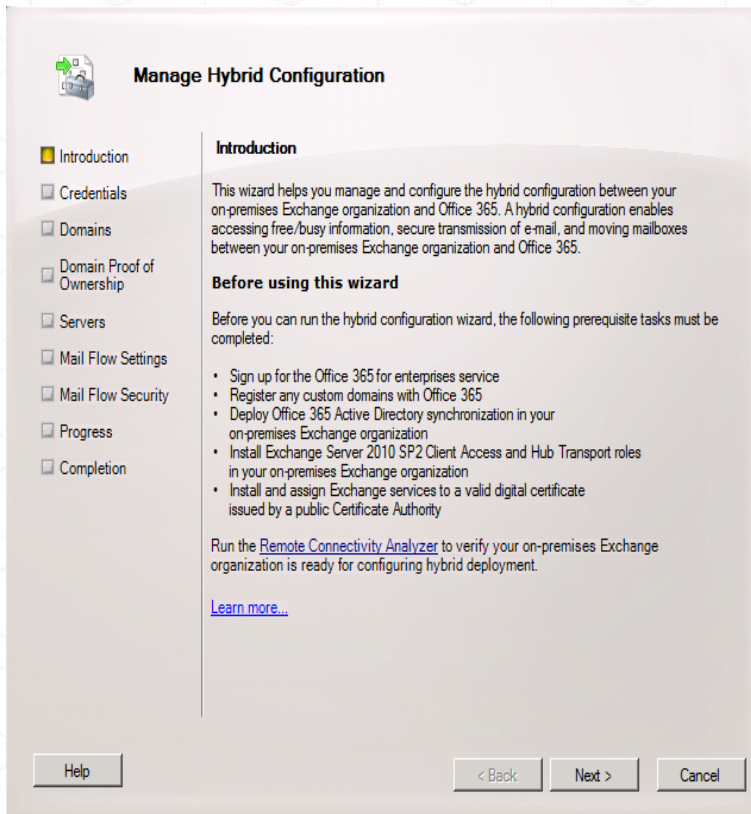
# Hybrid Configuration Wizard



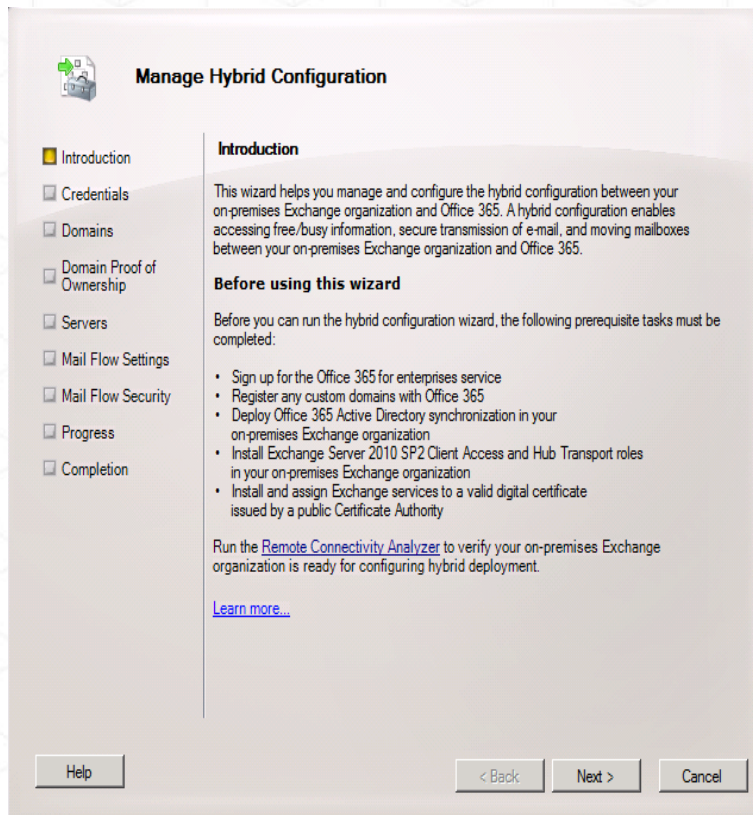
# The Wizard & the Configuration Engine



# The Wizard & the Configuration Engine



# The Wizard & the Configuration Engine

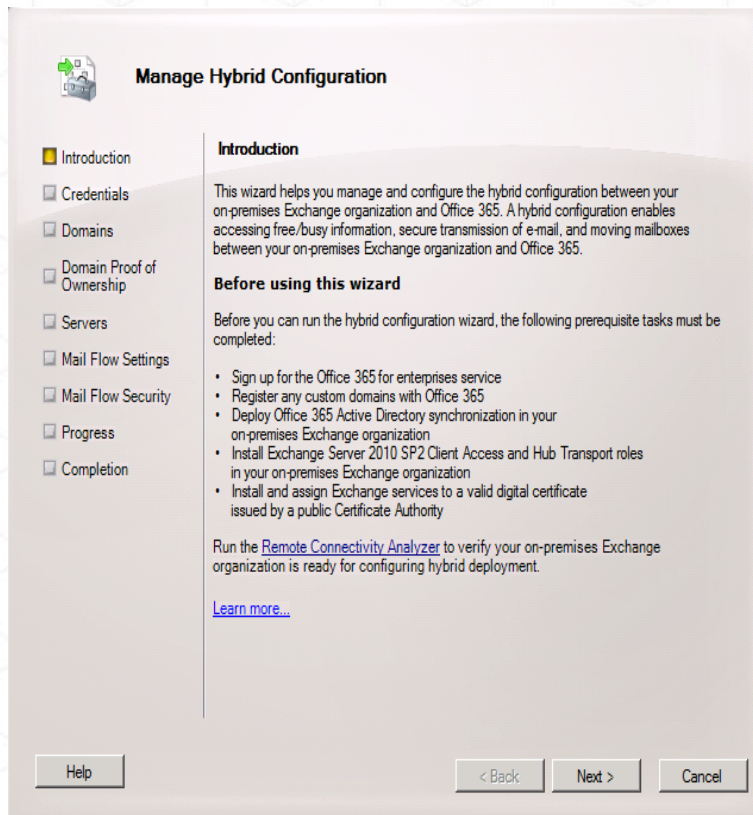


Update-  
HybridConfiguration

- The Wizard records the information collected from the user via the “Set-HybridConfiguration” cmdlet



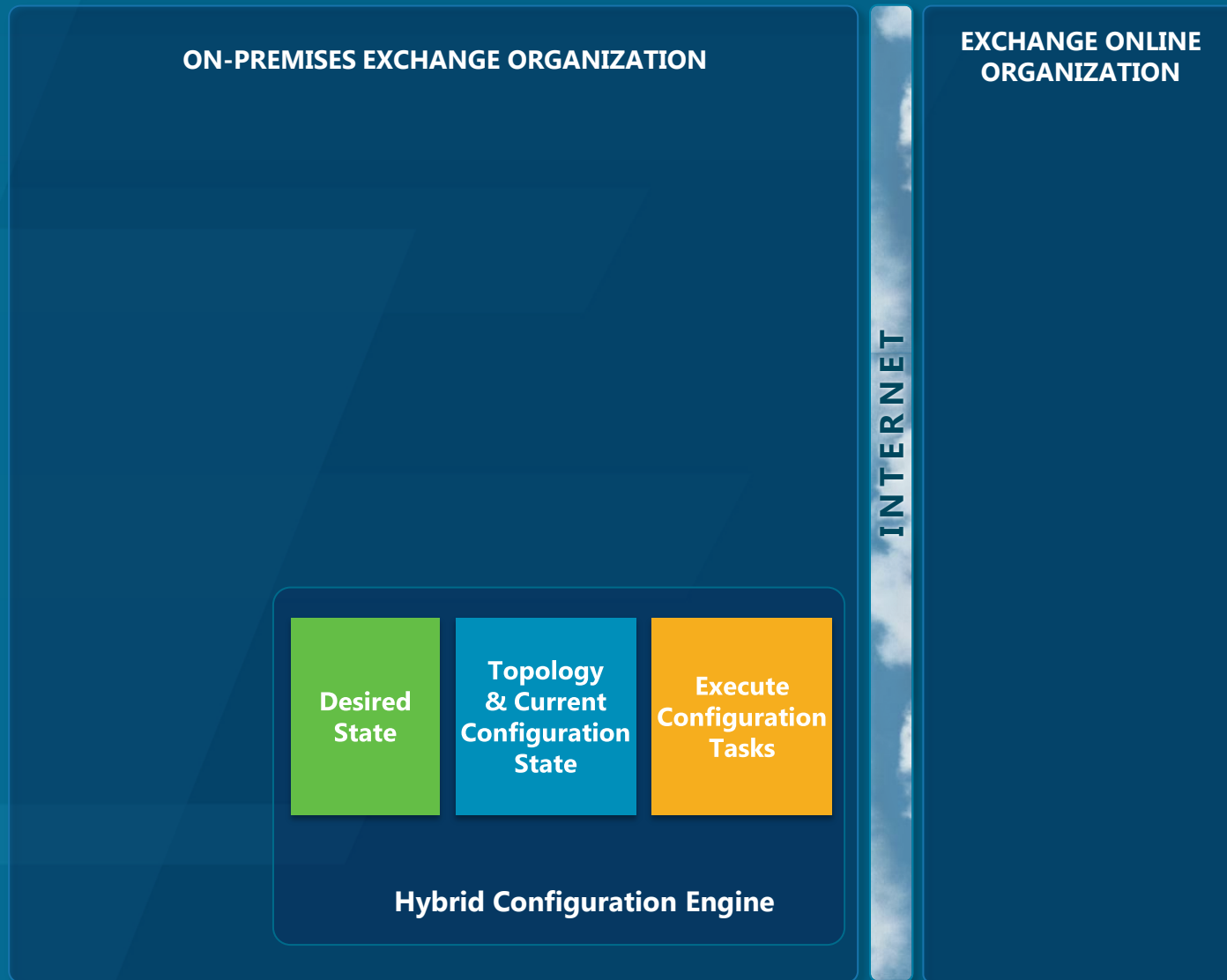
# The Wizard & the Configuration Engine



**Update-  
HybridConfiguration**

- The Wizard records the information collected from the user via the “Set-HybridConfiguration” cmdlet
- All deployment actions are taken by the Hybrid Configuration Engine, which is called by the Update-HybridConfiguration cmdlet

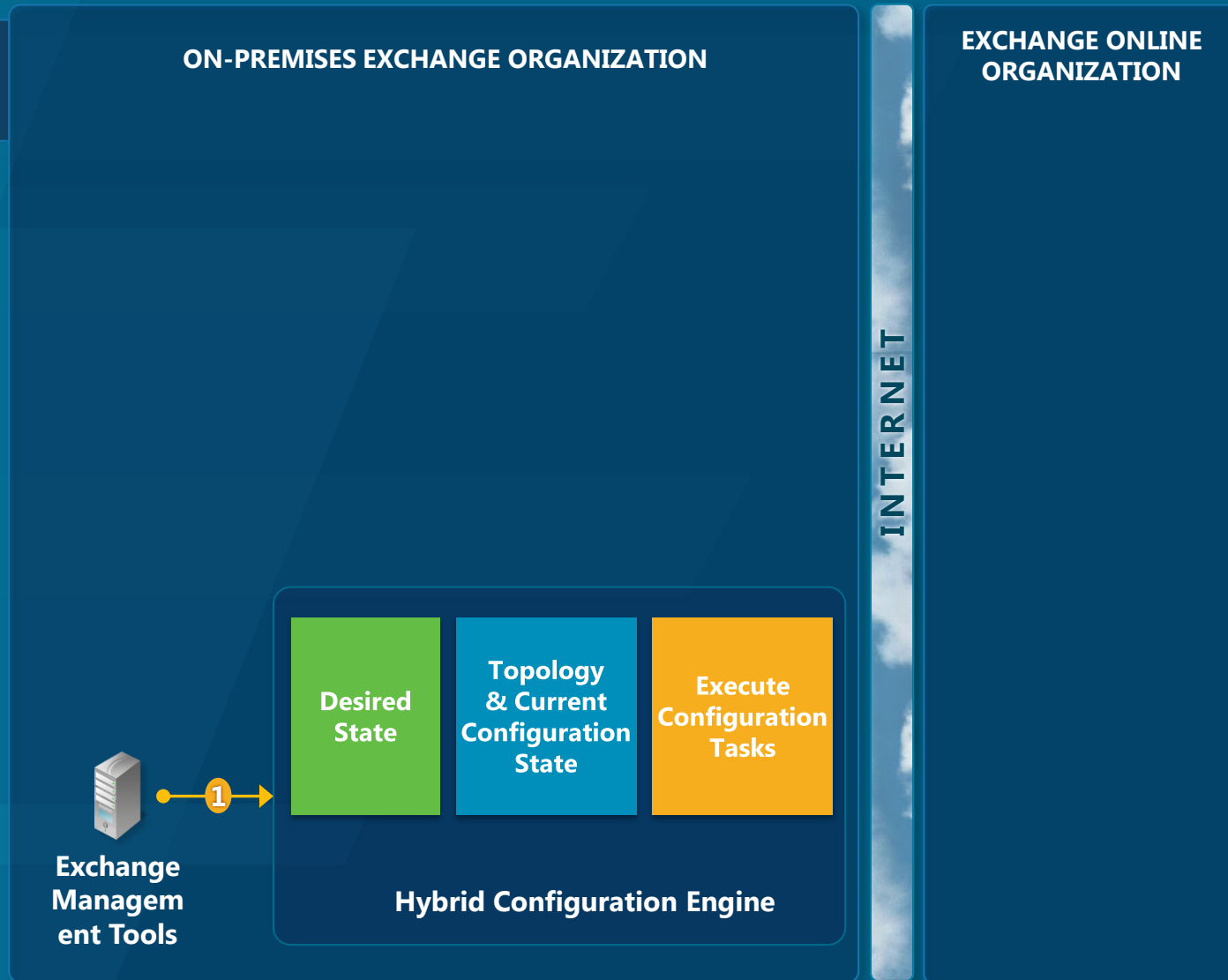
# Hybrid Configuration Engine



# Hybrid Configuration Engine

**Step 1**

The *Update-HybridConfiguration* cmdlet triggers the Hybrid Configuration Engine to start.



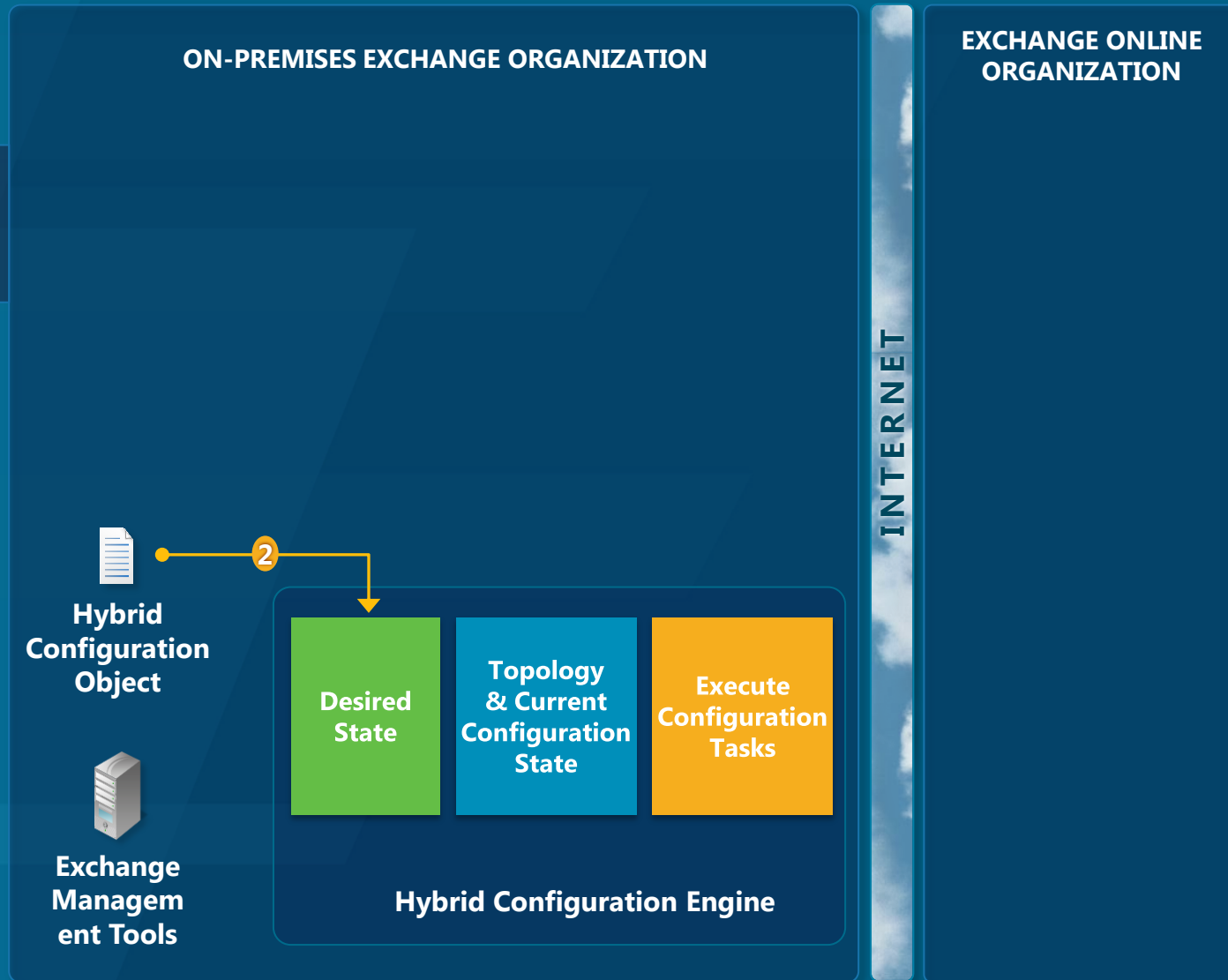
# Hybrid Configuration Engine

## Step 1

The `Update-HybridConfiguration` cmdlet triggers the Hybrid Configuration Engine to start.

## Step 2

The Hybrid Configuration Engine reads the "desired state" stored on the HybridConfiguration Active Directory object.



# Hybrid Configuration Engine

Step 1

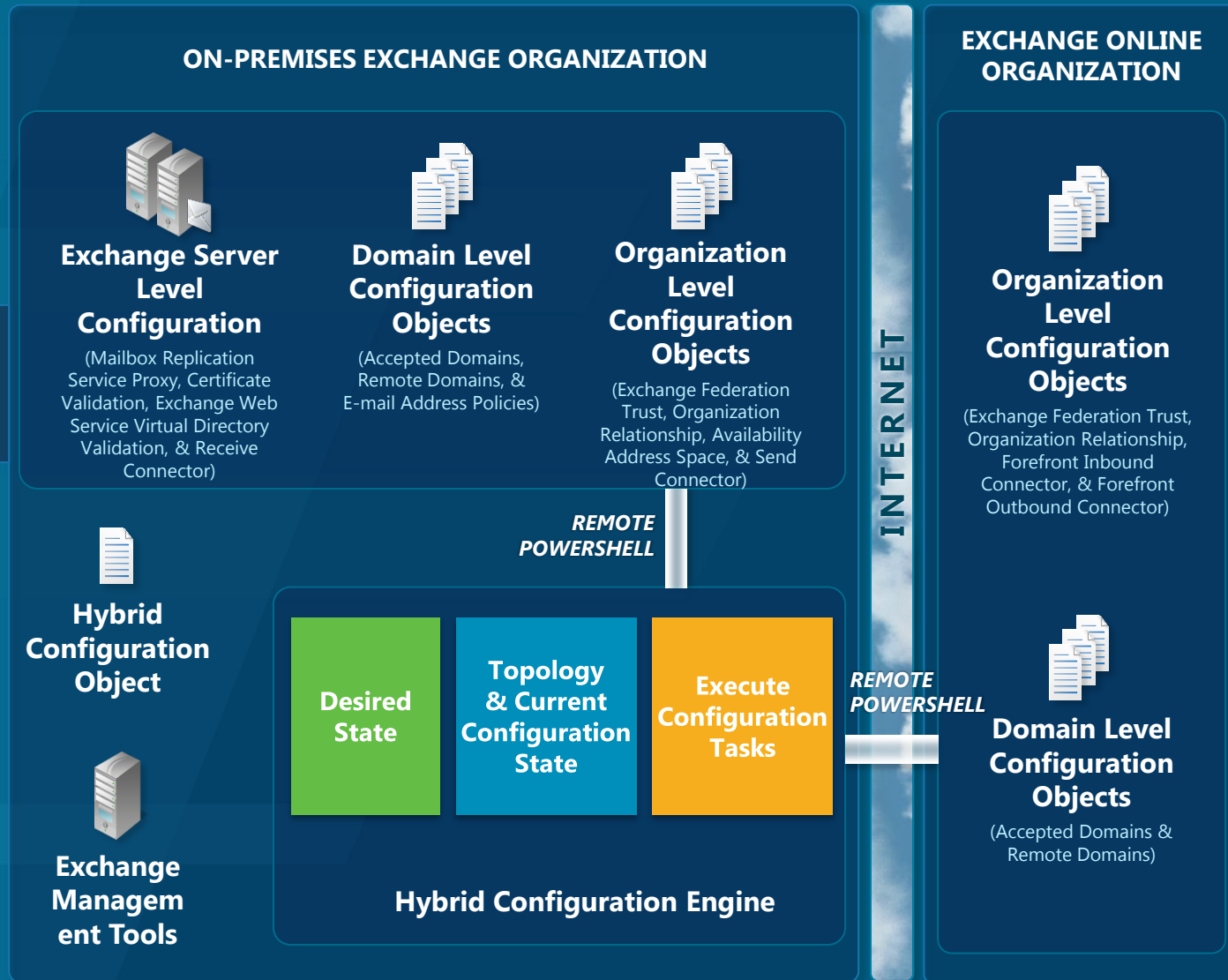
The *Update-HybridConfiguration* cmdlet triggers the Hybrid Configuration Engine to start.

Step 2

The Hybrid Configuration Engine reads the "desired state" stored on the HybridConfiguration Active Directory object.

Step 3

The Hybrid Configuration Engine connects via Remote PowerShell to both the on-premises and Exchange Online organizations.



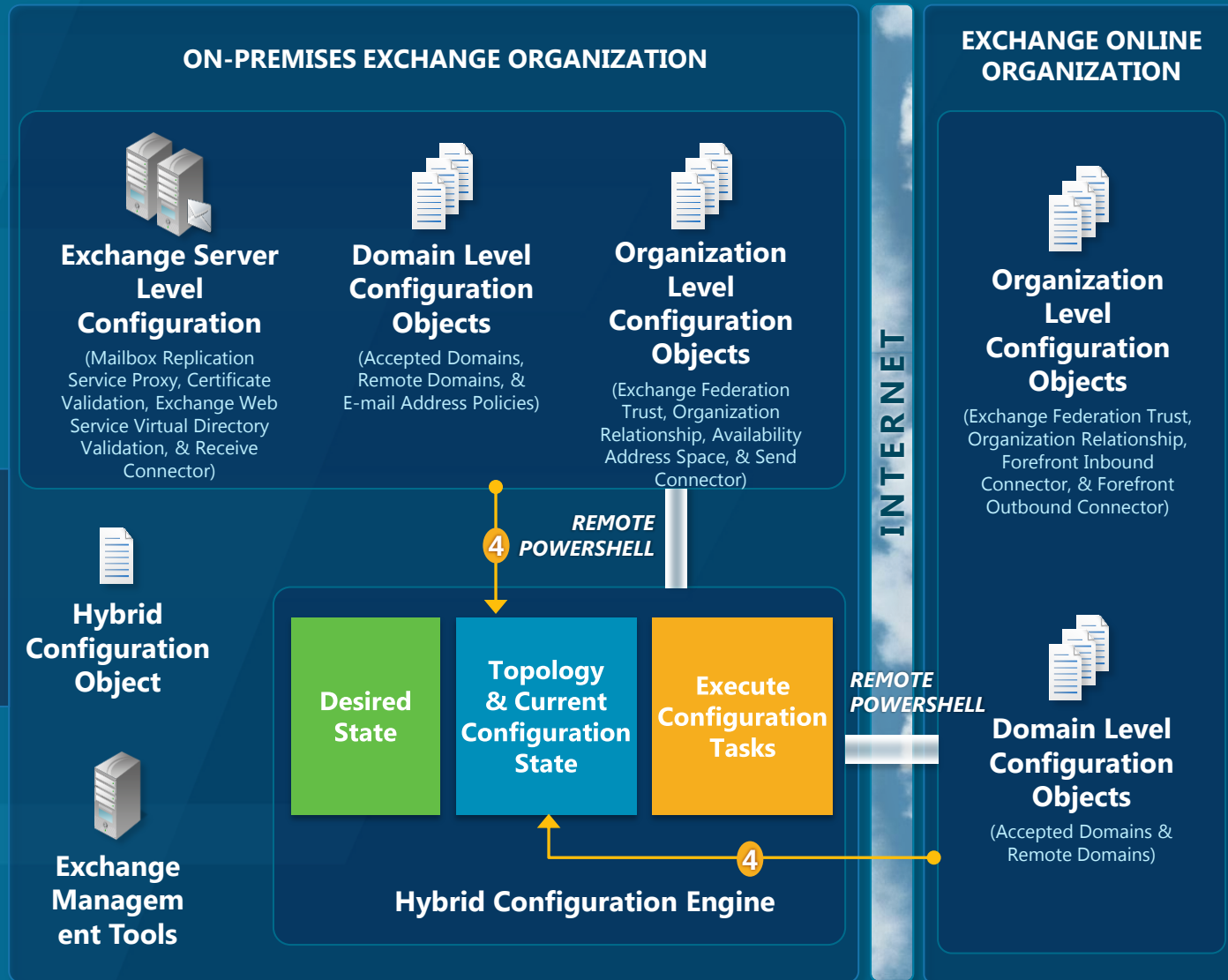
# Hybrid Configuration Engine

**Step 1** The *Update-HybridConfiguration* cmdlet triggers the Hybrid Configuration Engine to start.

**Step 2** The Hybrid Configuration Engine reads the "desired state" stored on the HybridConfiguration Active Directory object.

**Step 3** The Hybrid Configuration Engine connects via Remote PowerShell to both the on-premises and Exchange Online organizations.

**Step 4** The Hybrid Configuration Engine discovers topology data and current configuration from the on-premises Exchange organization and the Exchange Online organization.



# Hybrid Configuration Engine

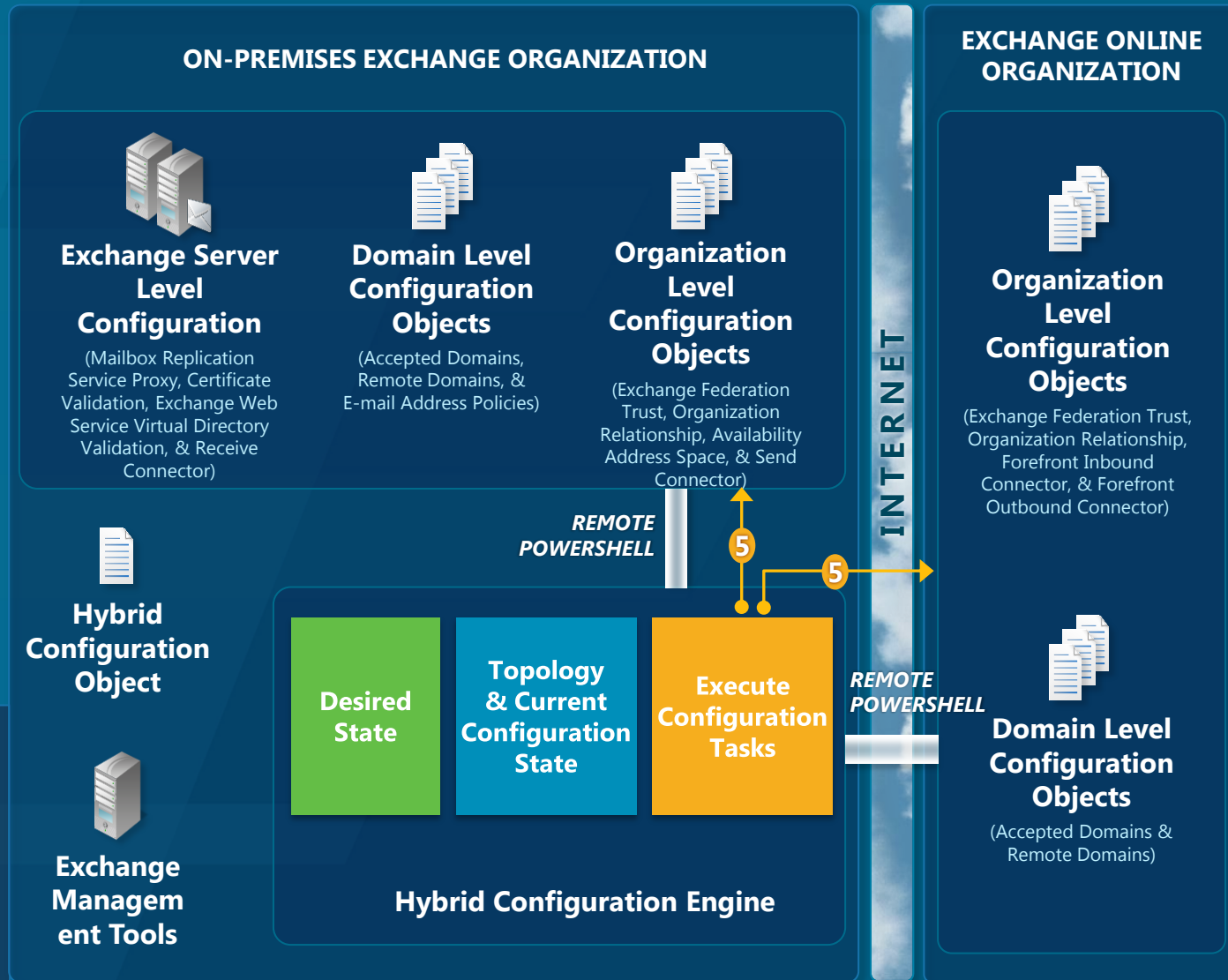
**Step 1** The *Update-HybridConfiguration* cmdlet triggers the Hybrid Configuration Engine to start.

**Step 2** The Hybrid Configuration Engine reads the "desired state" stored on the HybridConfiguration Active Directory object.

**Step 3** The Hybrid Configuration Engine connects via Remote PowerShell to both the on-premises and Exchange Online organizations.

**Step 4** The Hybrid Configuration Engine discovers topology data and current configuration from the on-premises Exchange organization and the Exchange Online organization.

**Step 5** Based on the desired state, topology data, and current configuration, across both the on-premises Exchange and Exchange Online organizations, the Hybrid Configuration Engine establishes the "difference" and then executes configuration tasks to establish the "desired state."



# Organization Relationship Creation

## ON-PREMISES EXCHANGE ORGANIZATION



Exchange 2007 Mailbox Server



Exchange 2007 Client Access Server



Exchange 2010 Client Access Server



Hybrid Configuration Engine

MICROSOFT  
FEDERATION  
GATEWAY

PUBLIC  
DNS

## EXCHANGE ONLINE ORGANIZATION



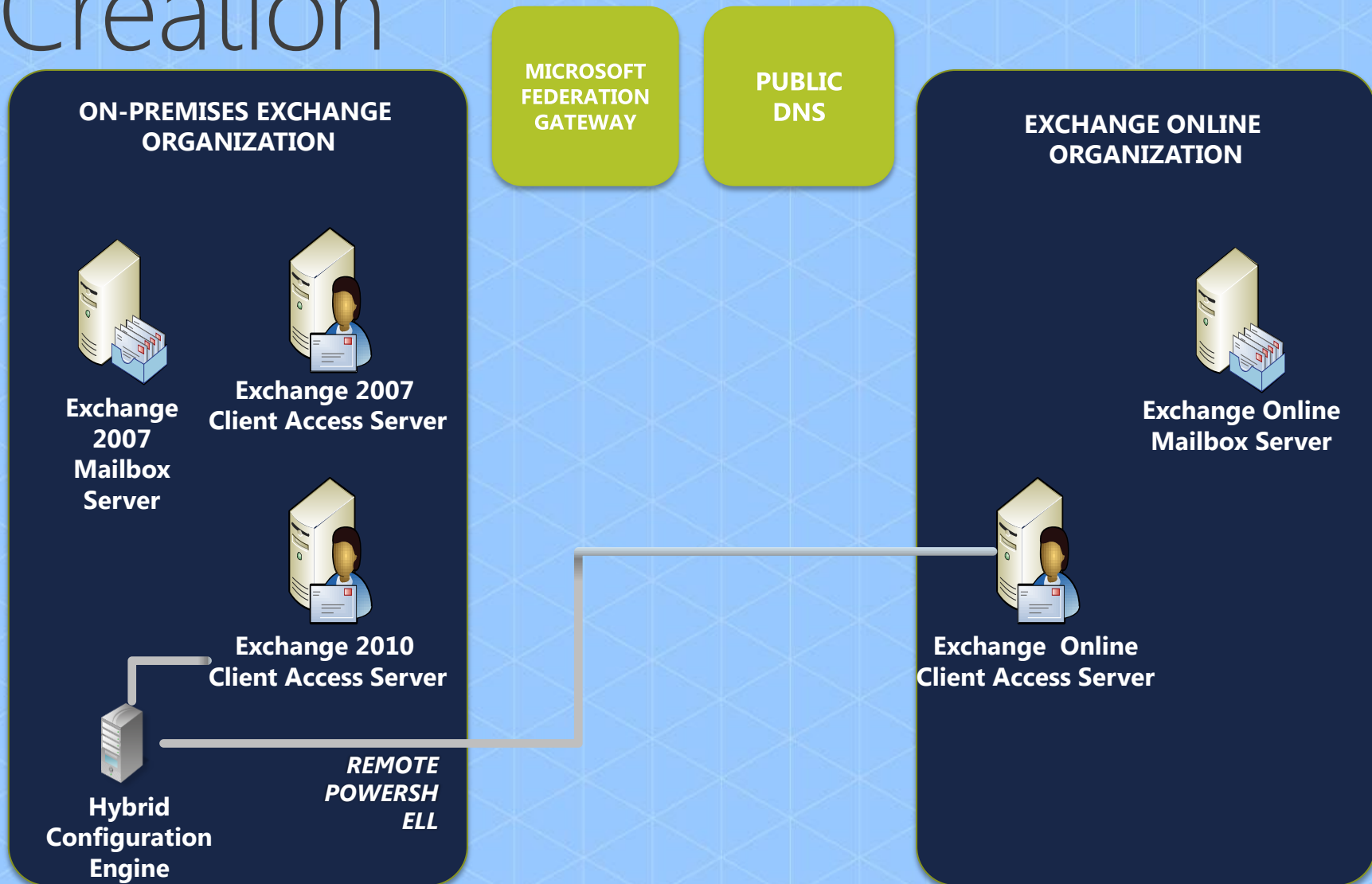
Exchange Online Mailbox Server



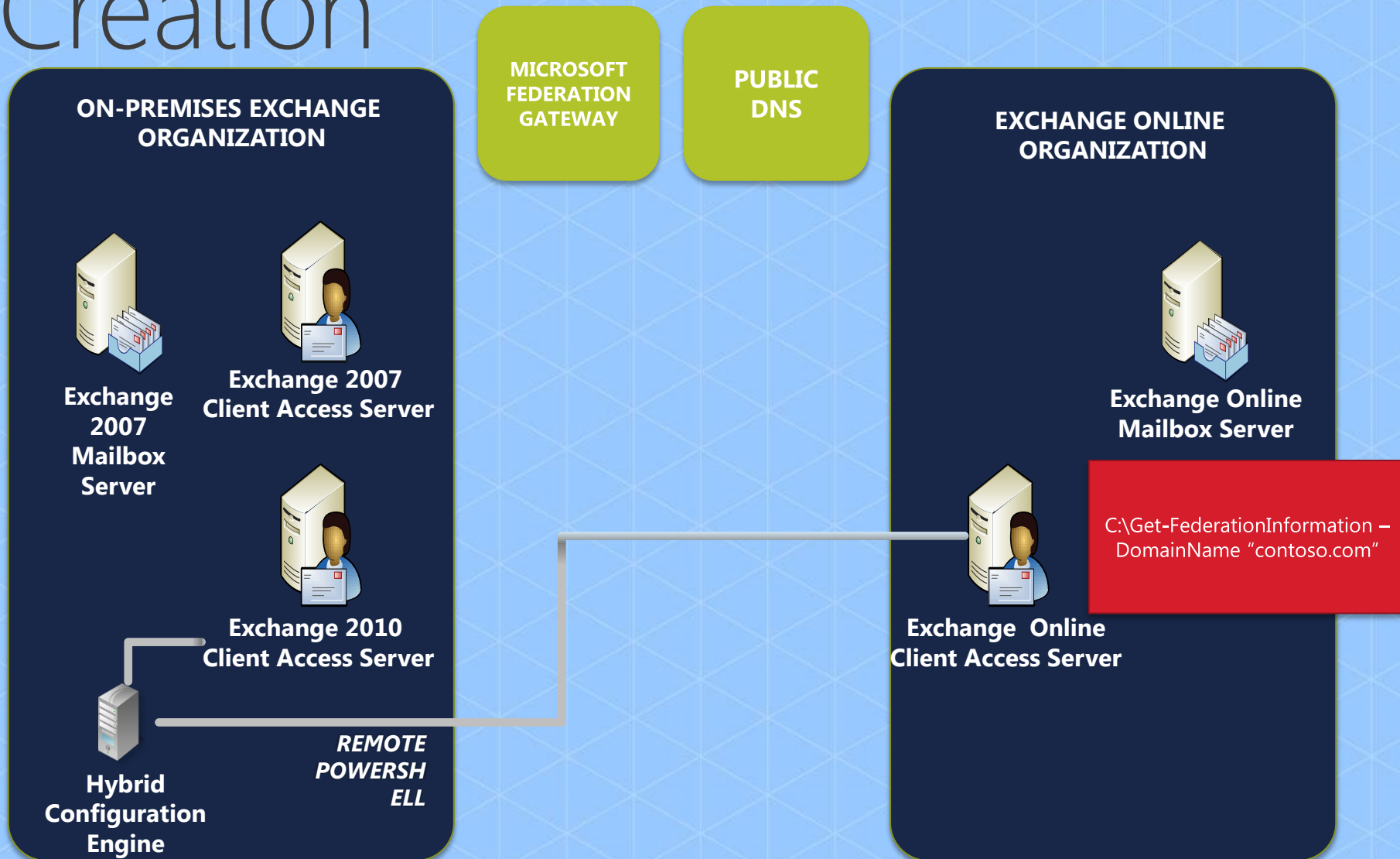
Exchange Online Client Access Server



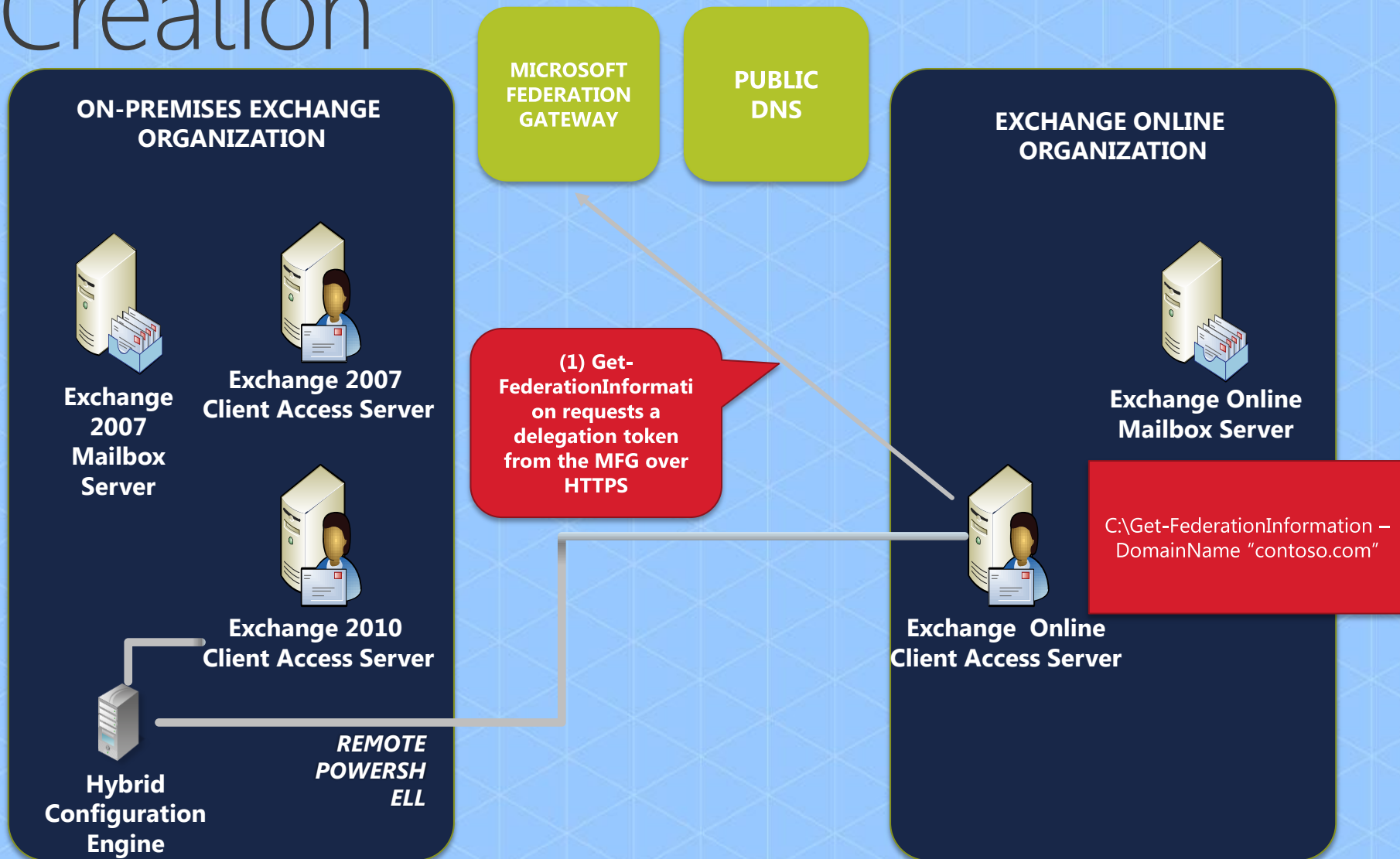
# Organization Relationship Creation



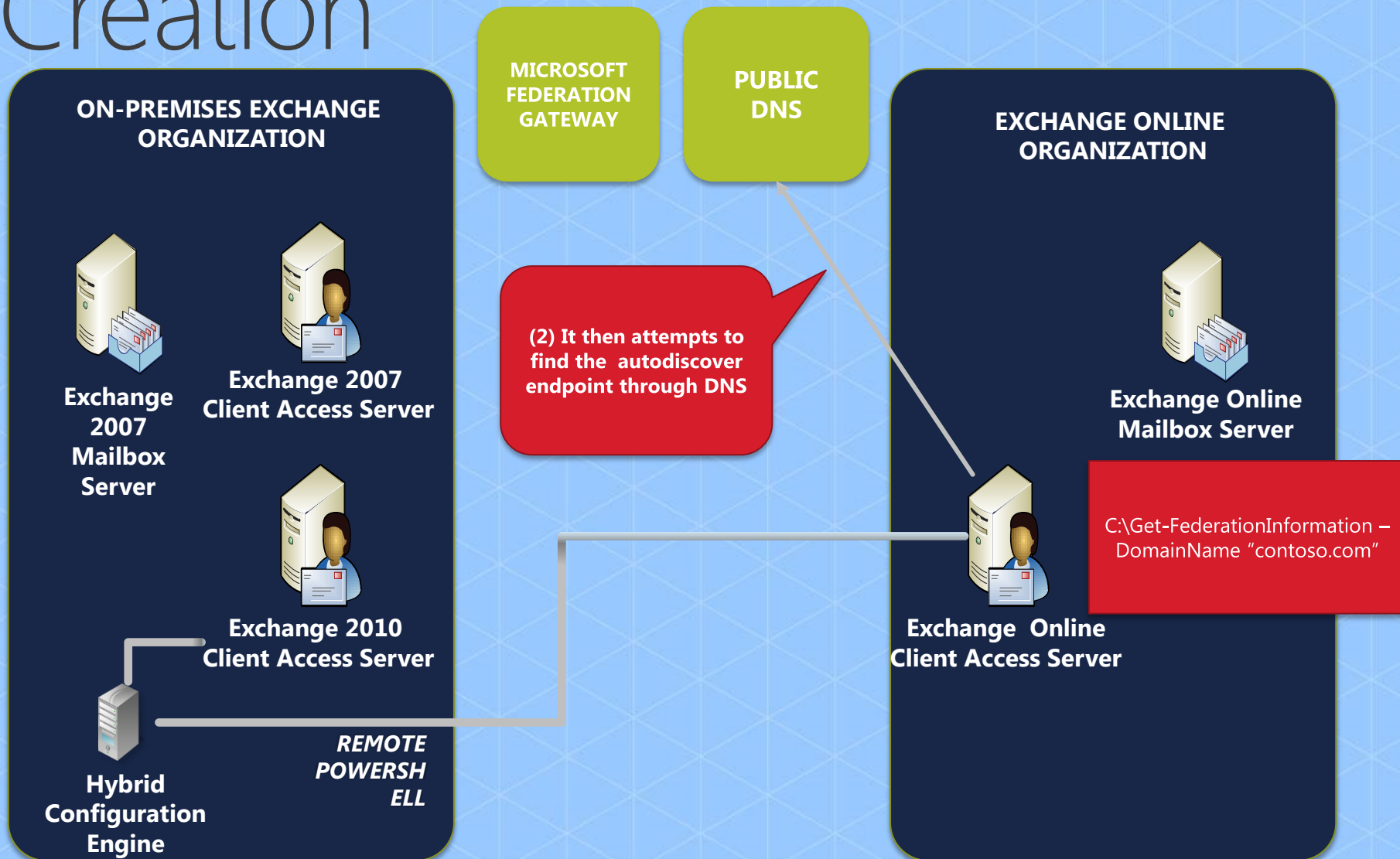
# Organization Relationship Creation



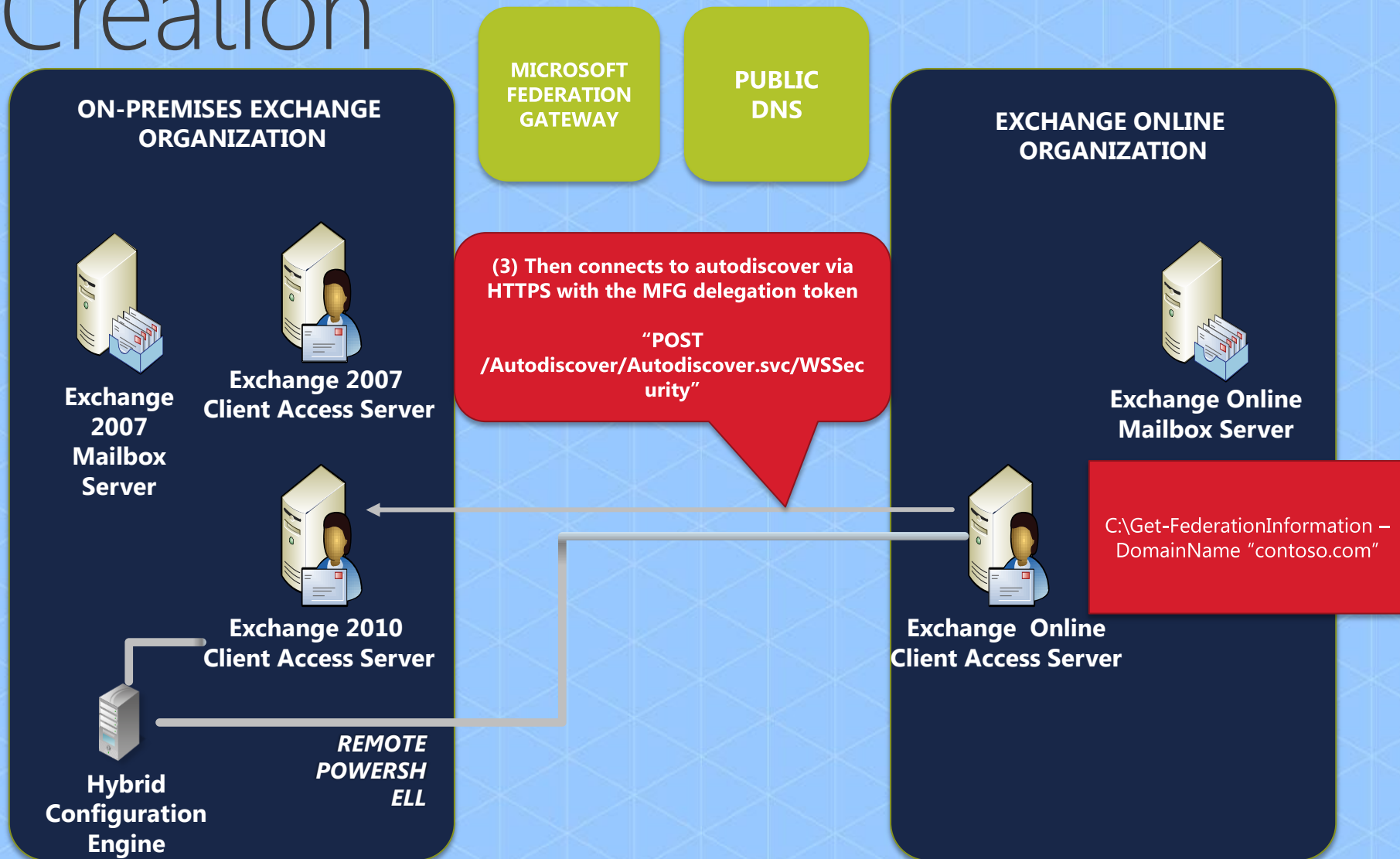
# Organization Relationship Creation



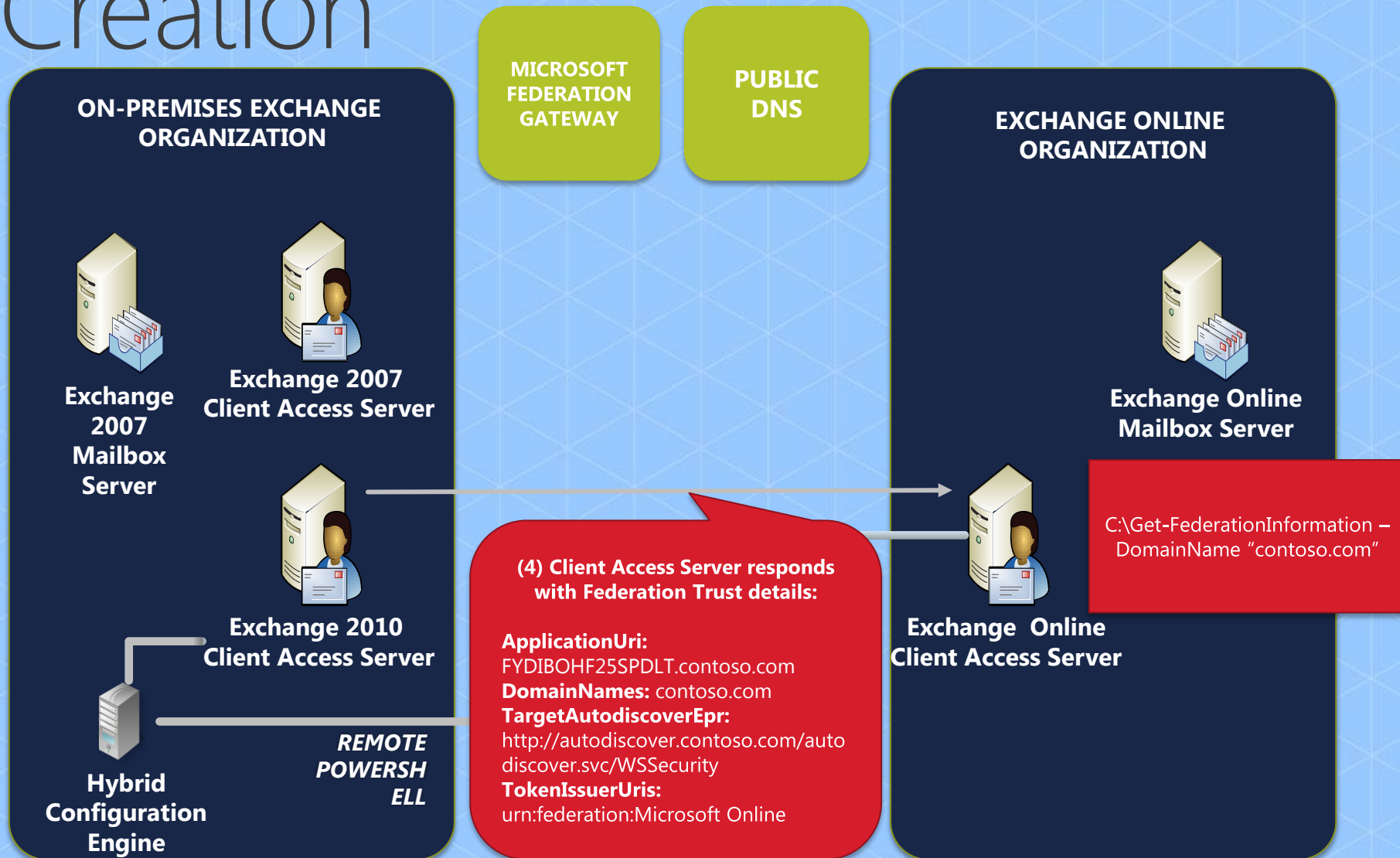
# Organization Relationship Creation



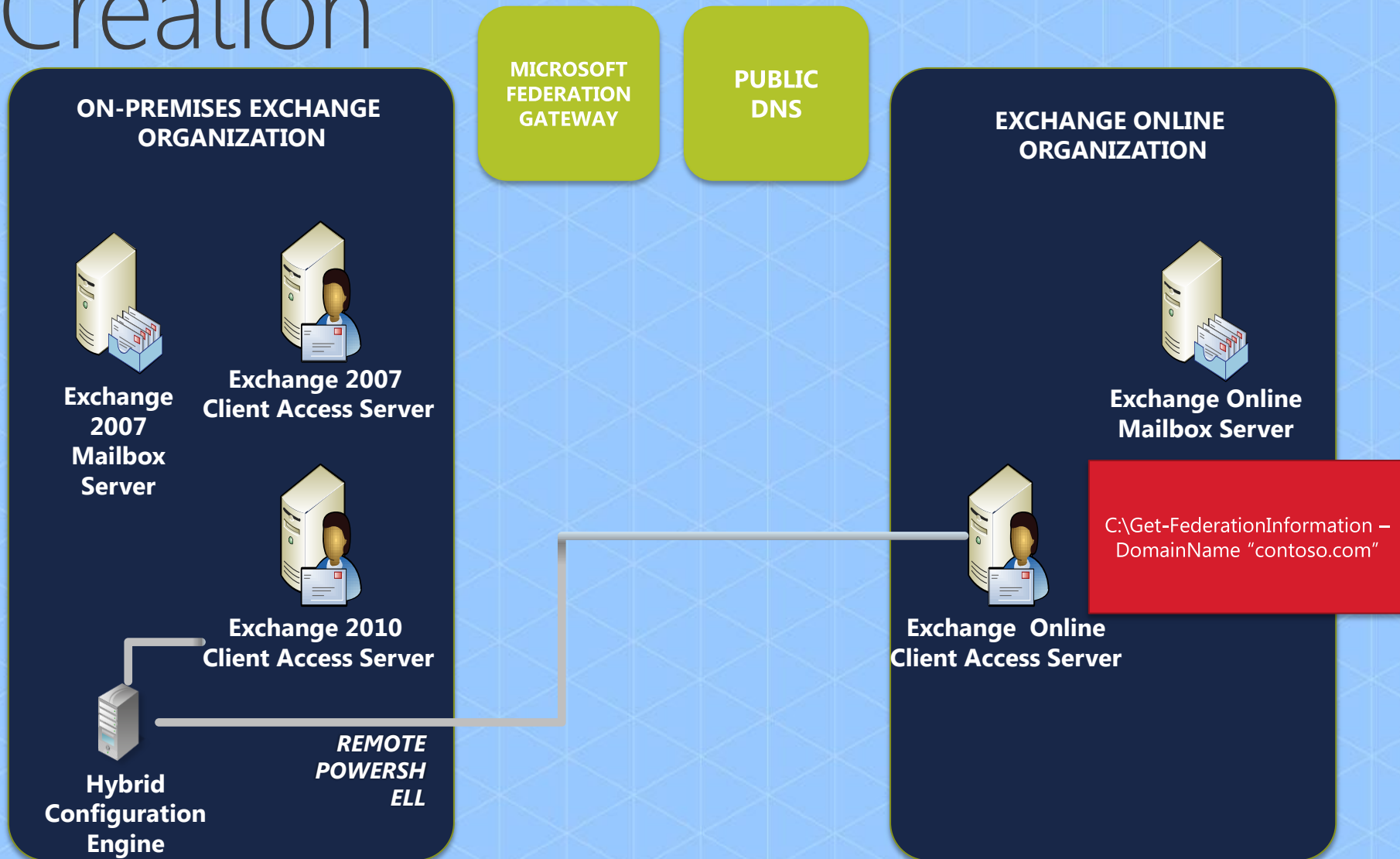
# Organization Relationship Creation



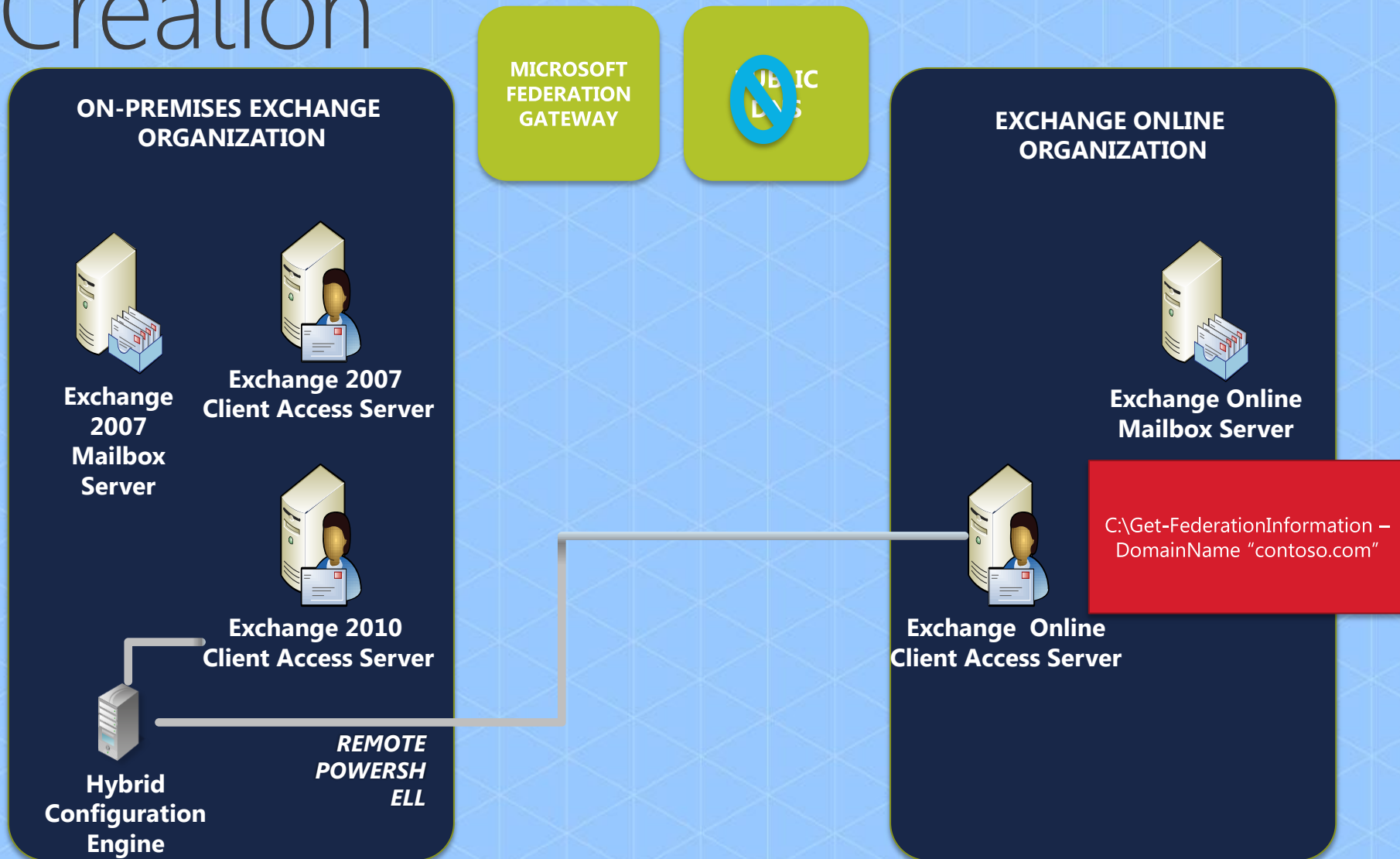
# Organization Relationship Creation



# Organization Relationship Creation

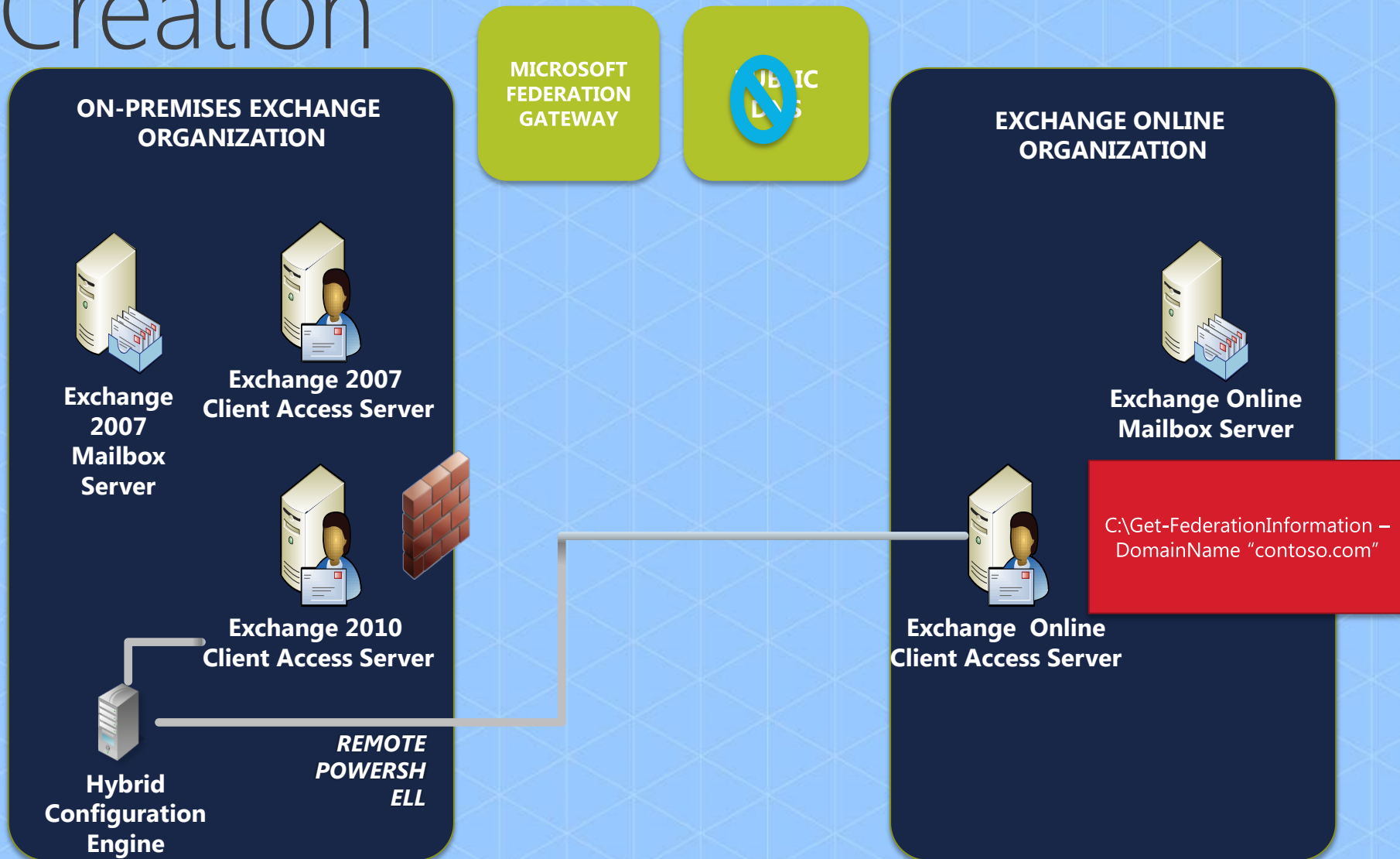


# Organization Relationship Creation

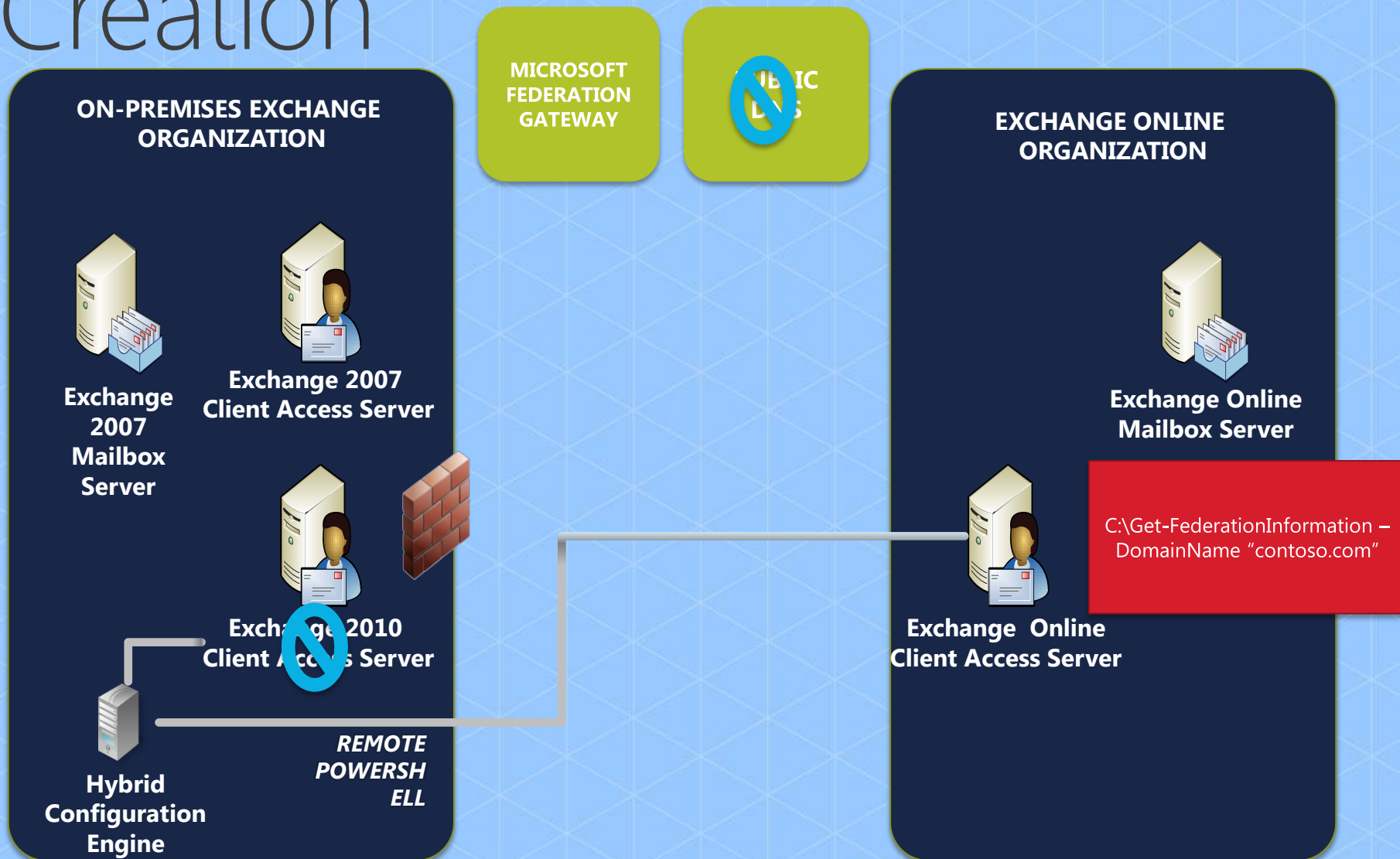




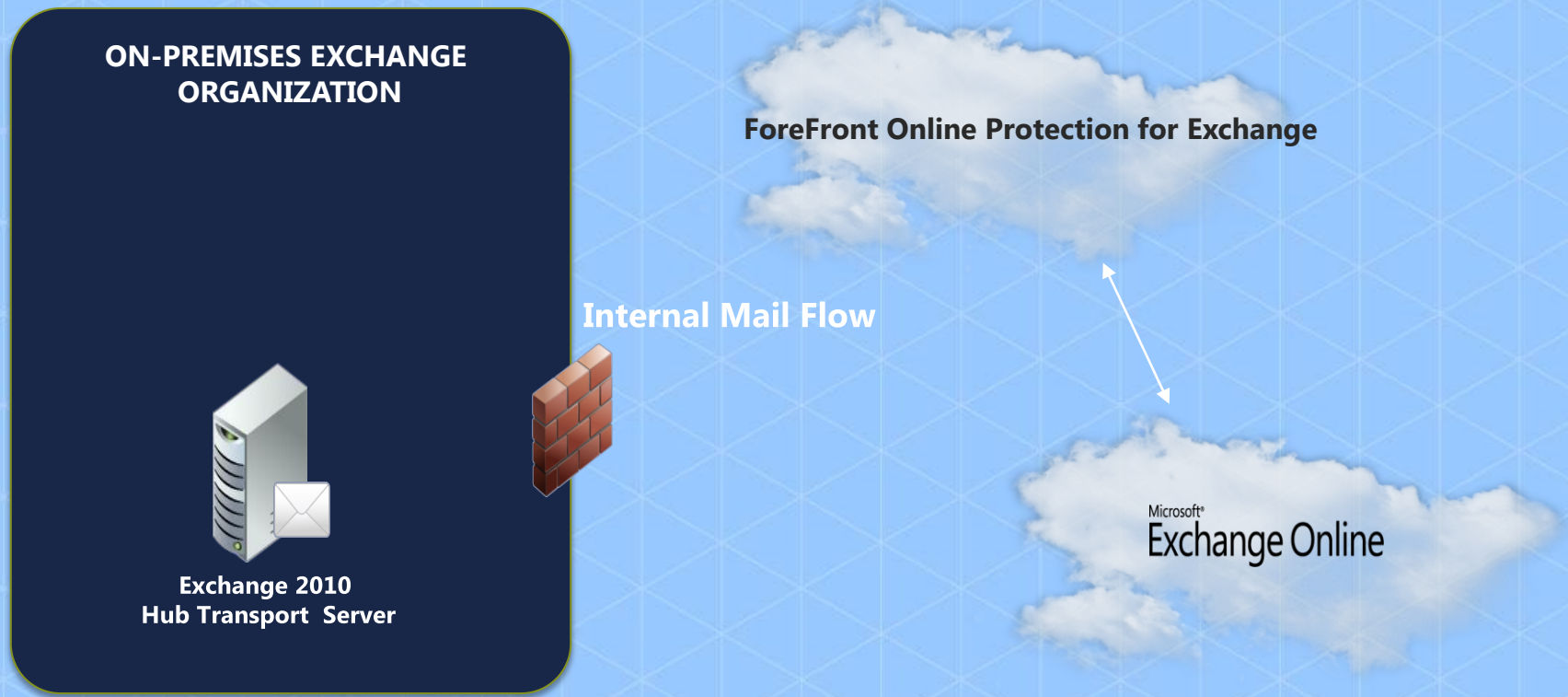
# Organization Relationship Creation



# Organization Relationship Creation



# Mail Flow – decentralized



# Mail Flow – decentralized

The Exchange Send Connector“  
is scoped to the coexistence  
domain (e.g.  
“contoso.mail.onmicrosoft.com  
”

## ON-PREMISES EXCHANGE ORGANIZATION



Exchange 2010  
Hub Transport Server



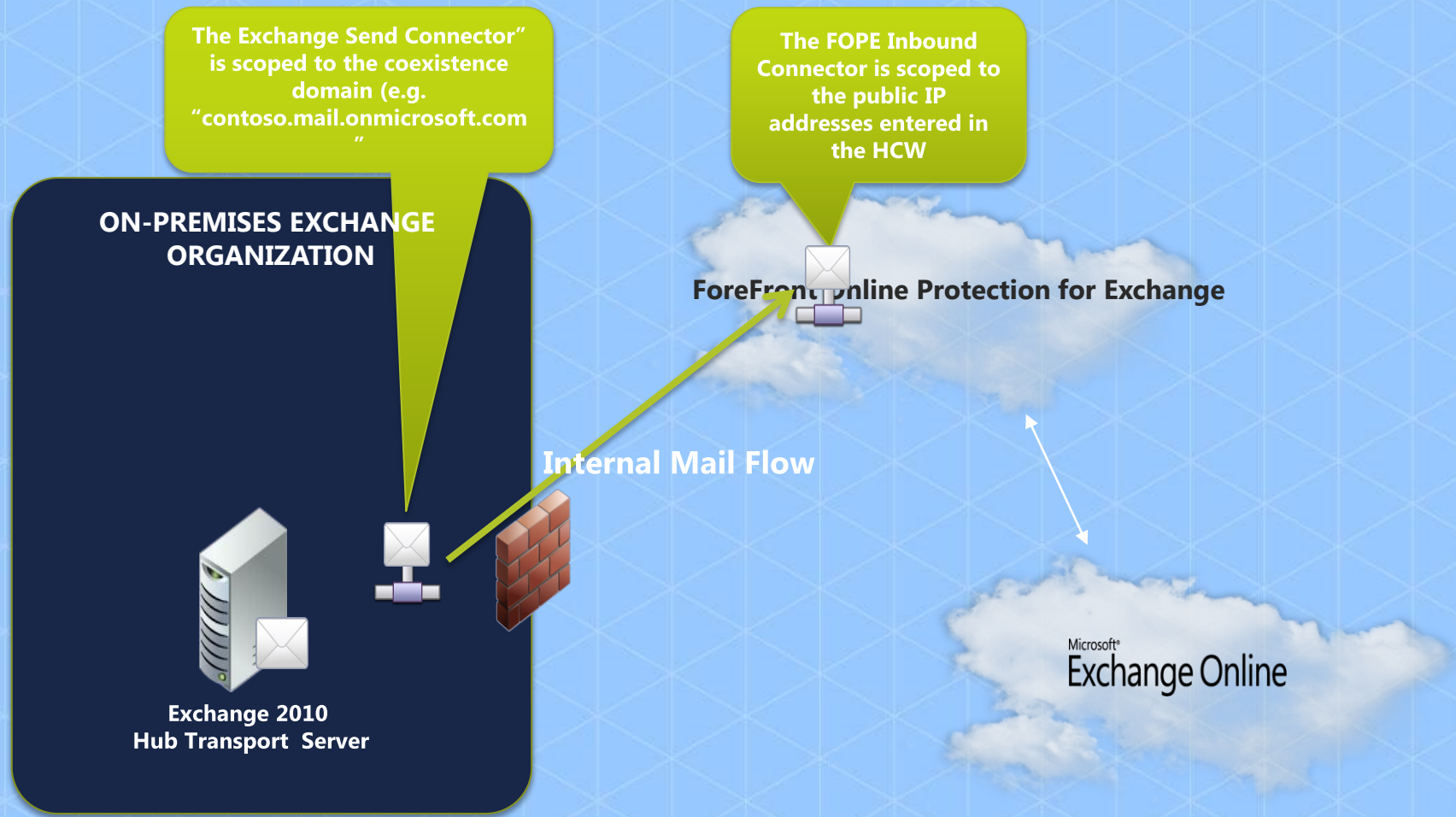
Internal Mail Flow

ForeFront Online Protection for Exchange

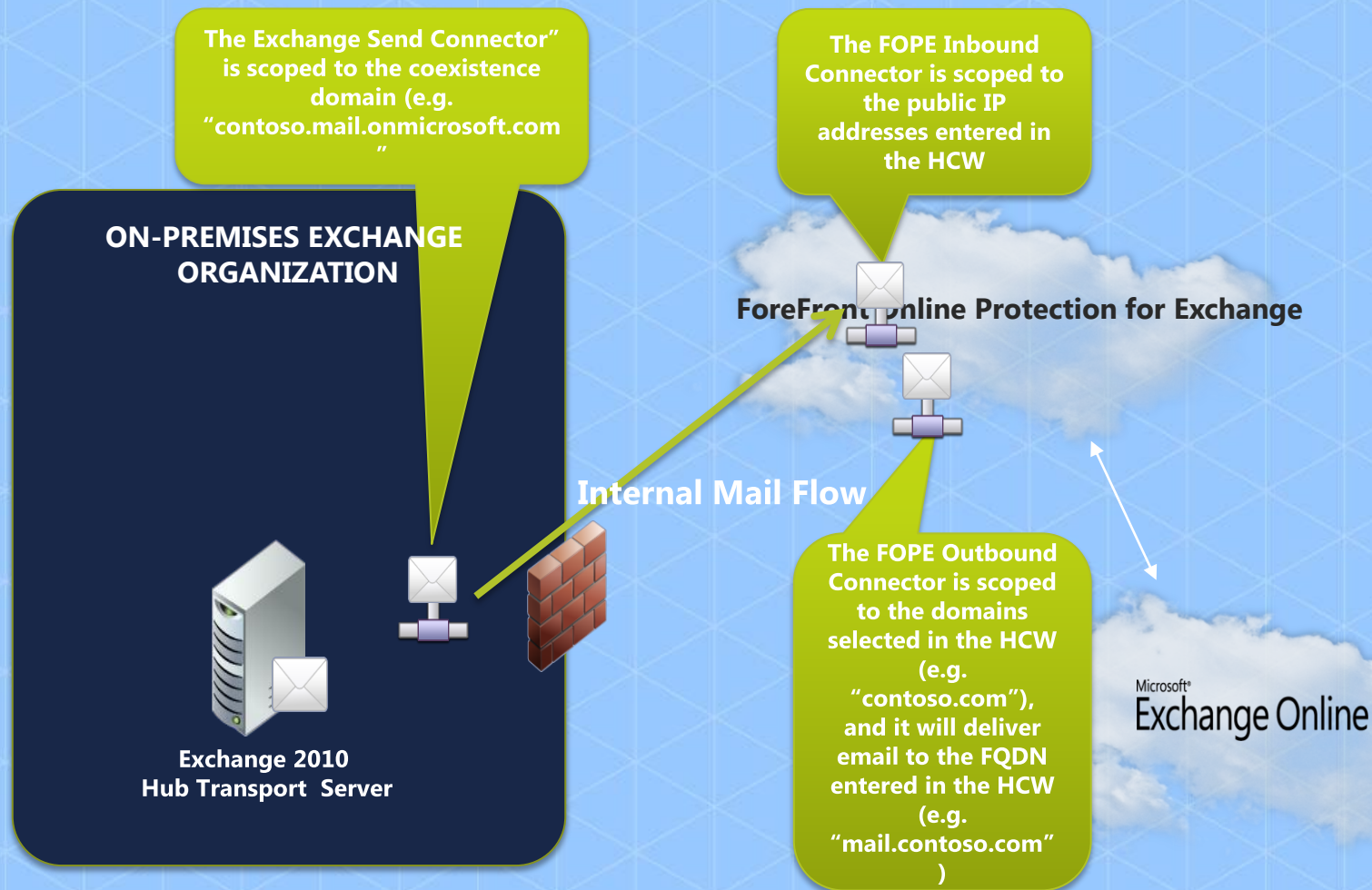


Microsoft®  
Exchange Online

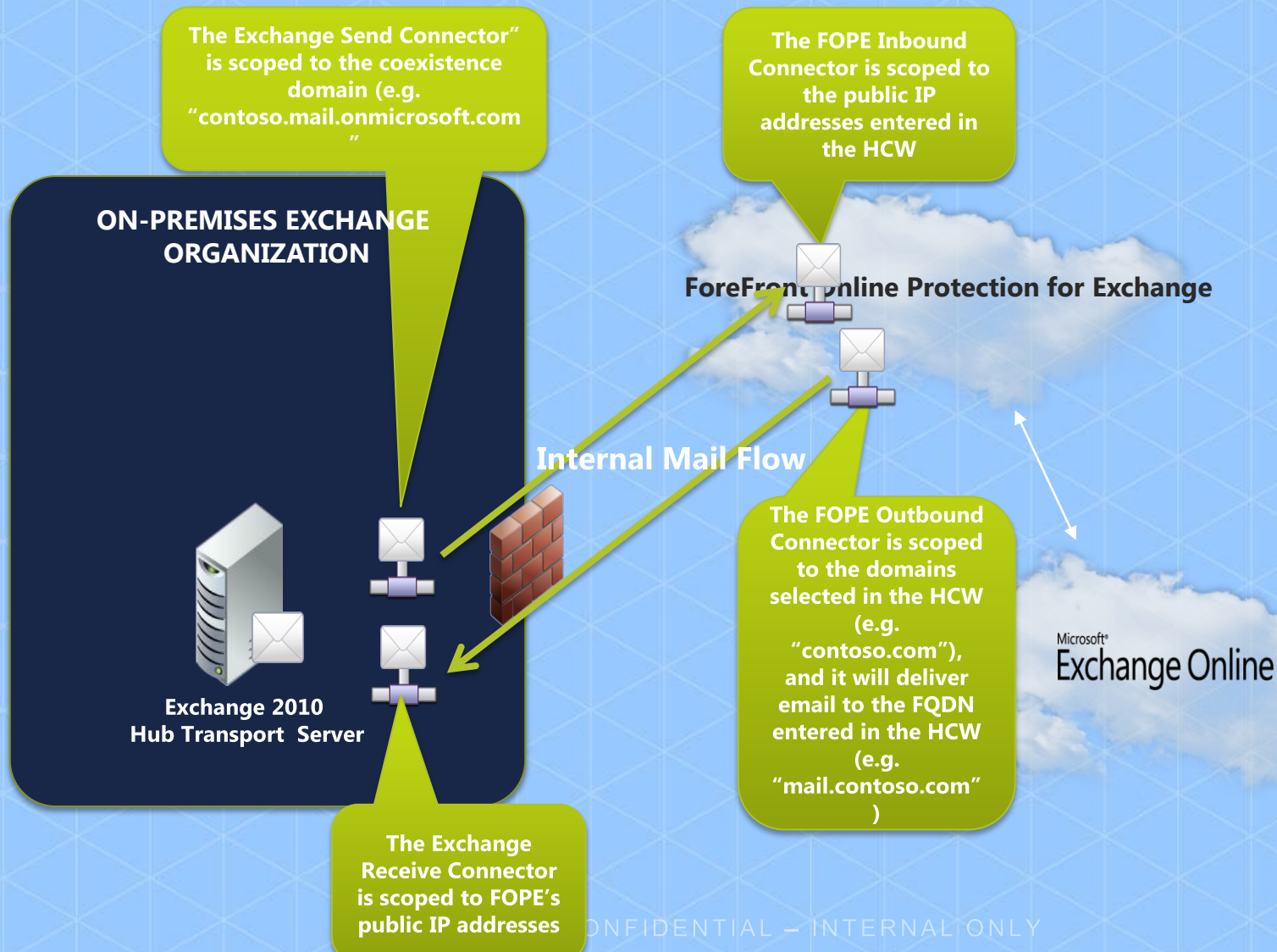
# Mail Flow – decentralized



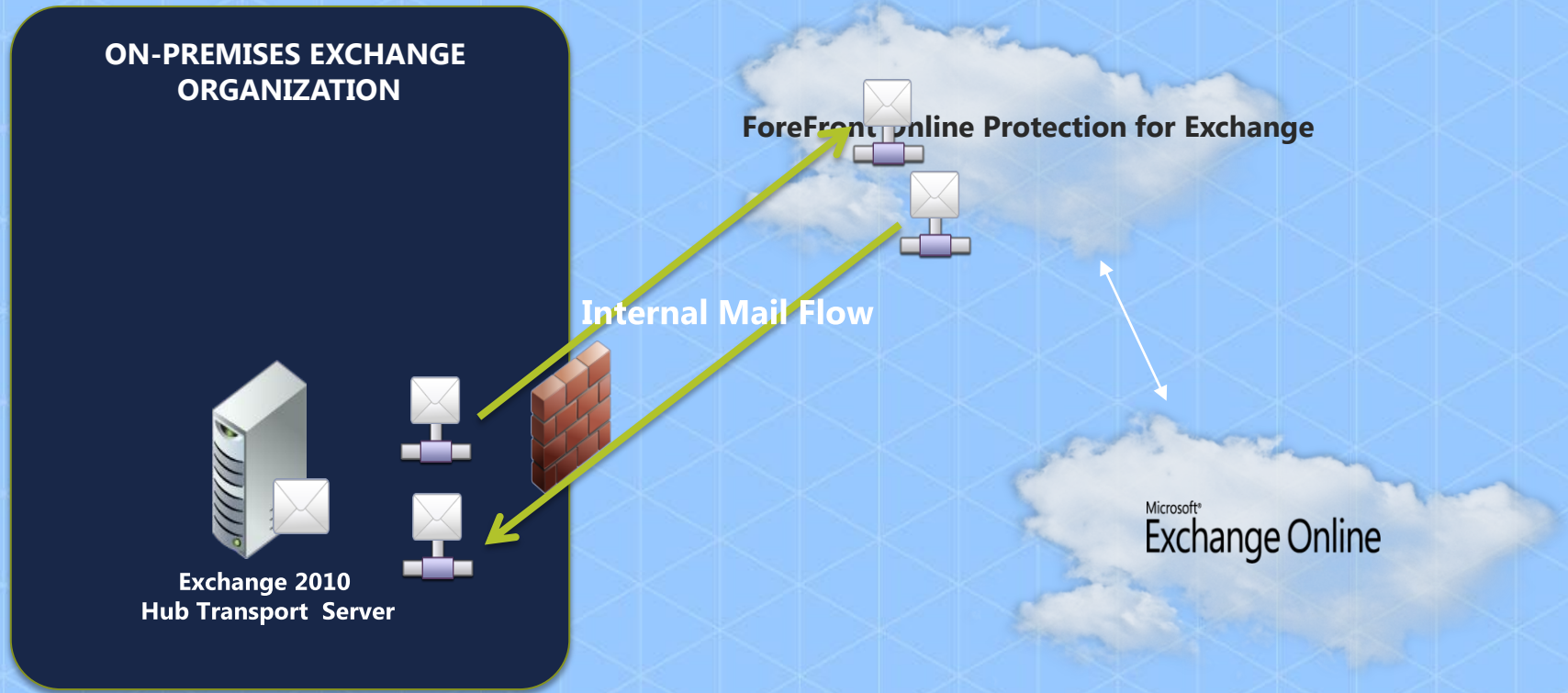
# Mail Flow – decentralized



# Mail Flow – decentralized



# Mail Flow – decentralized

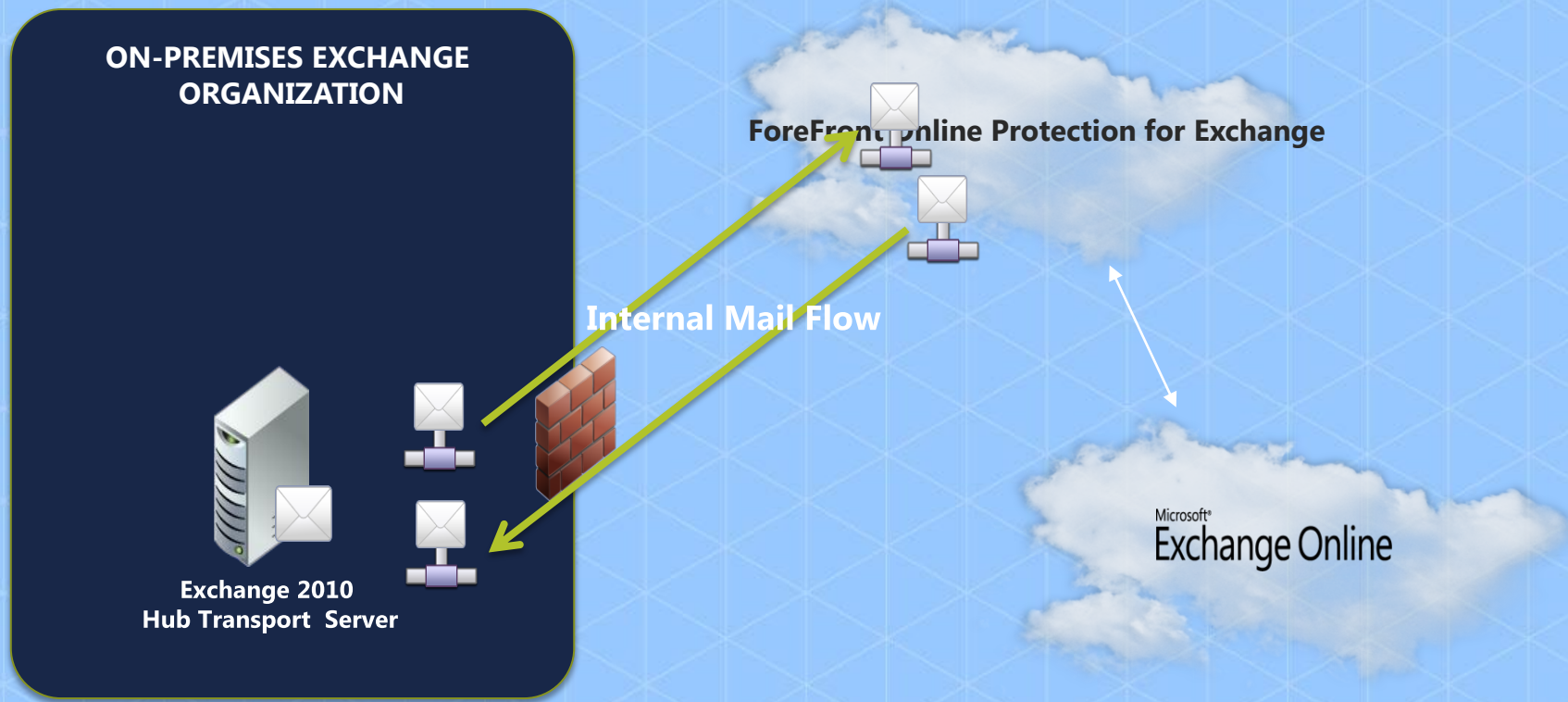




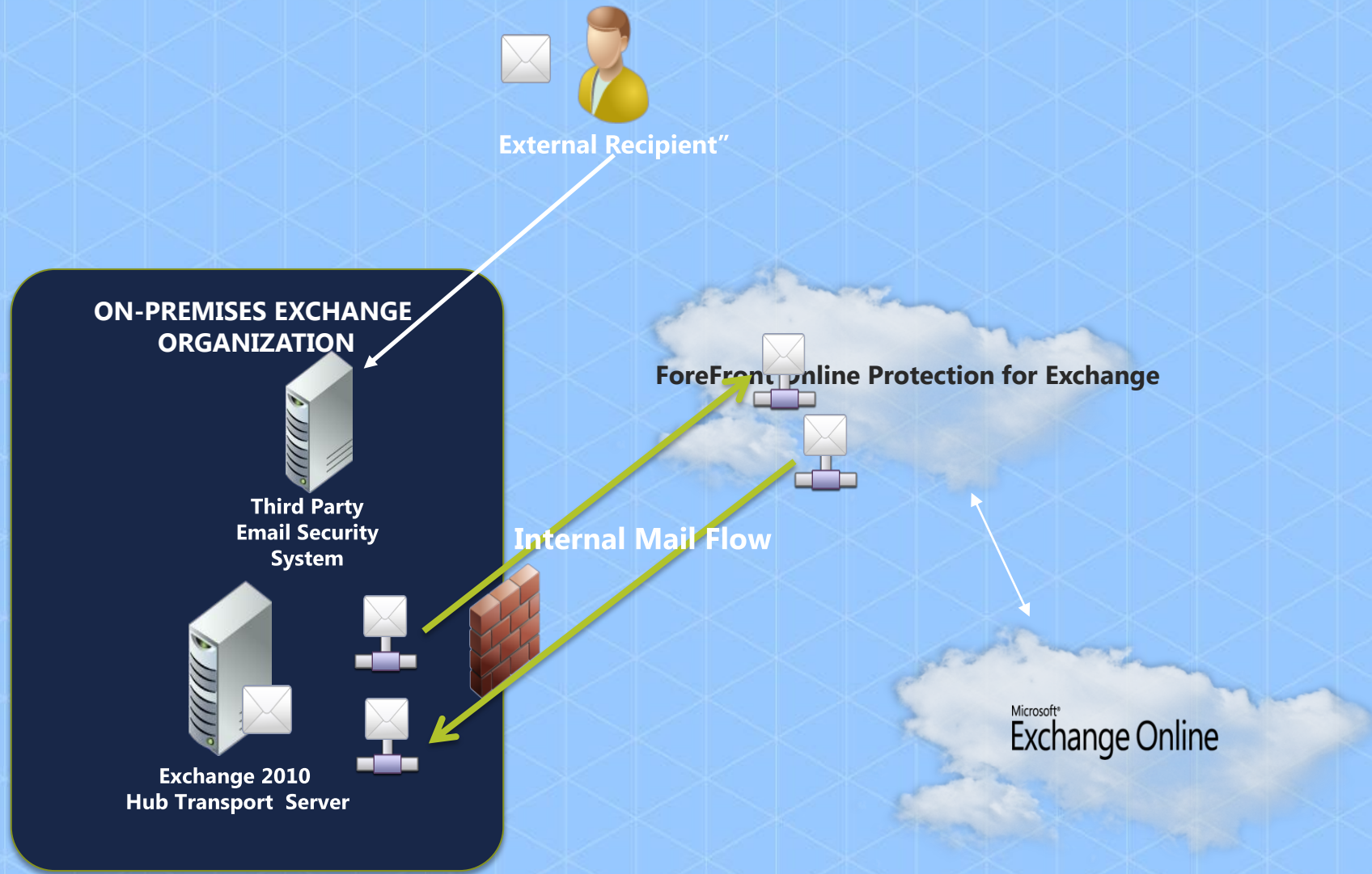
# Mail Flow – decentralized



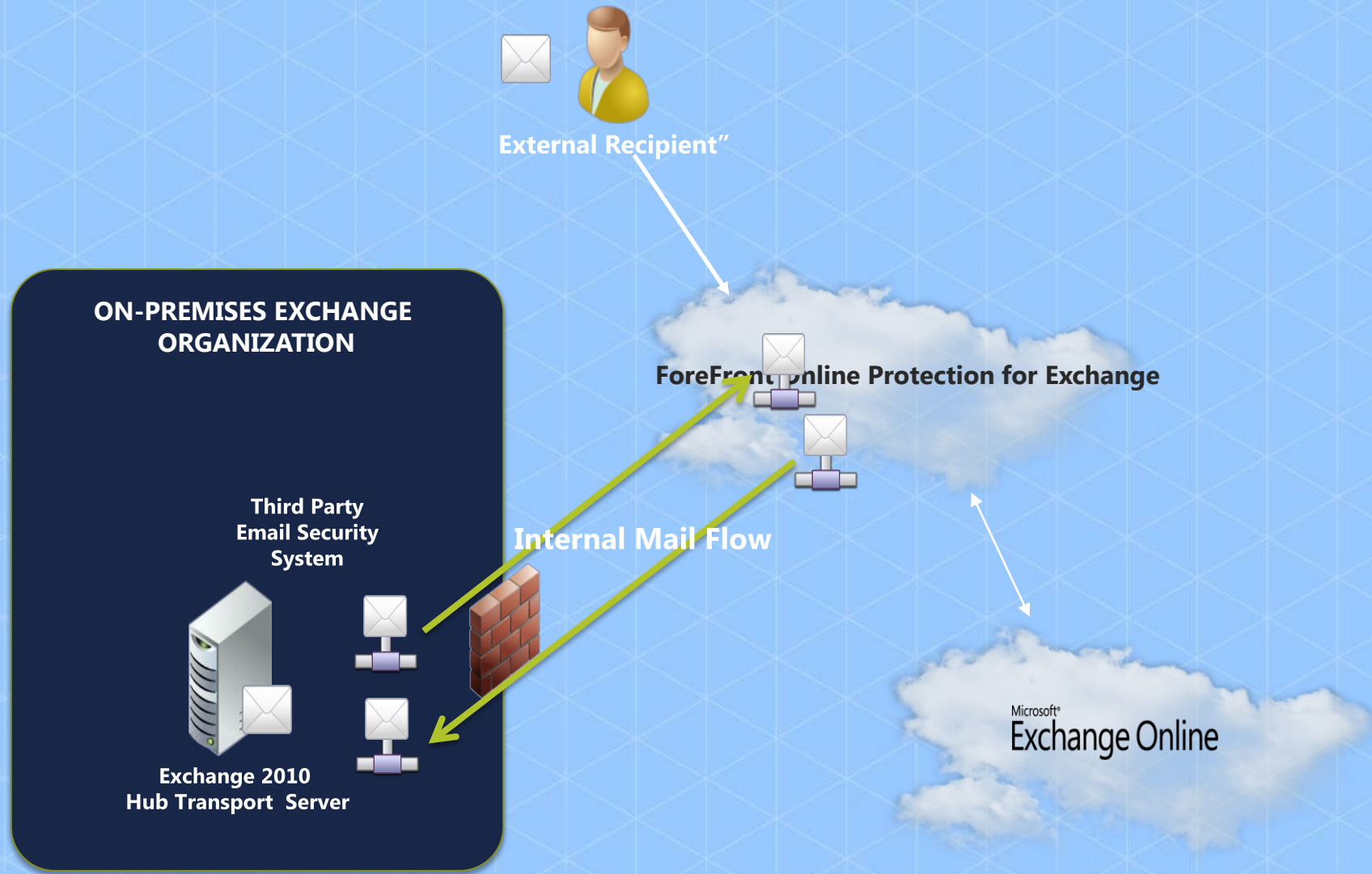
External Recipient



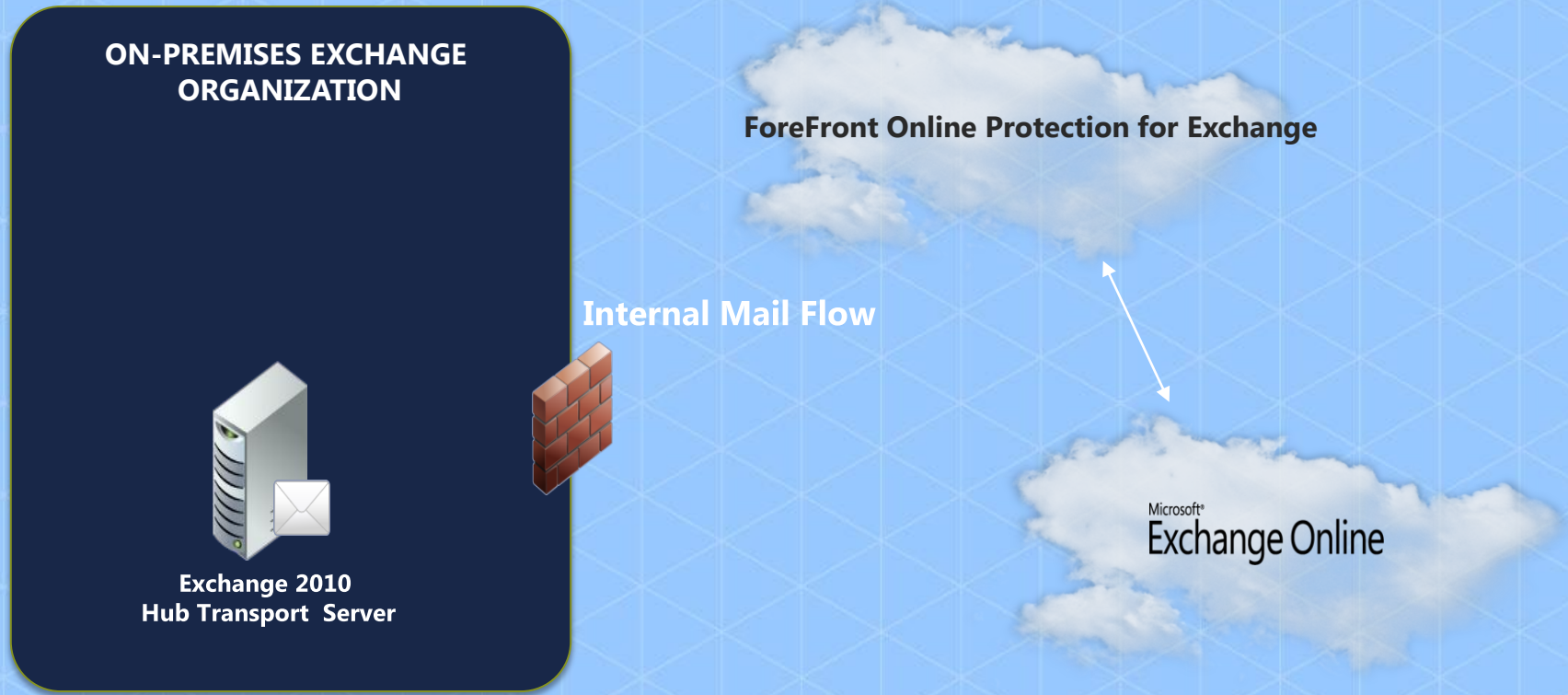
# Mail Flow – decentralized



# Mail Flow – decentralized



# Mail Flow – Centralized



# Mail Flow – Centralized

The Exchange Send Connector" is scoped to the coexistence domain (e.g. "contoso.mail.onmicrosoft.com")

## ON-PREMISES EXCHANGE ORGANIZATION



Exchange 2010  
Hub Transport Server



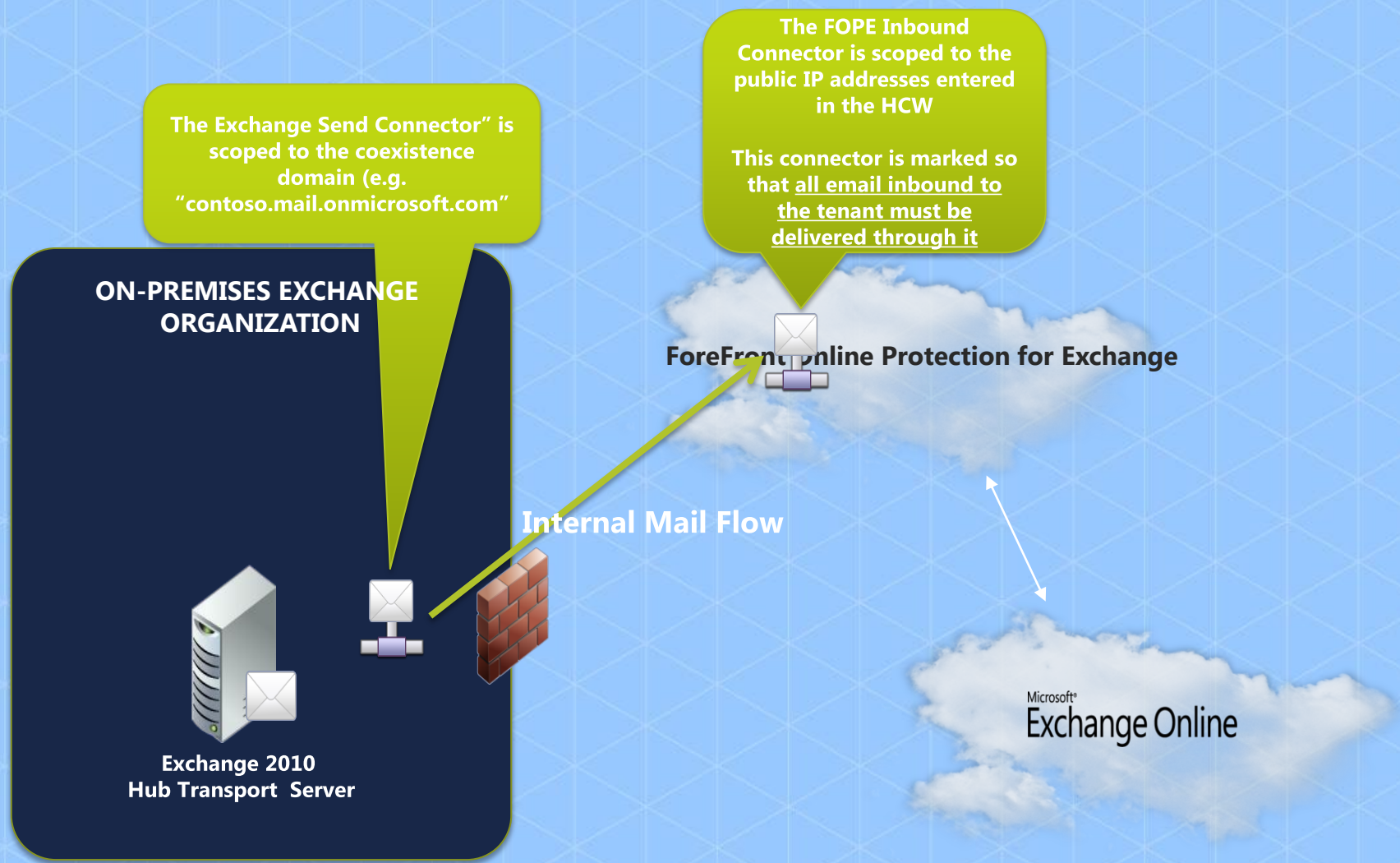
Internal Mail Flow

ForeFront Online Protection for Exchange

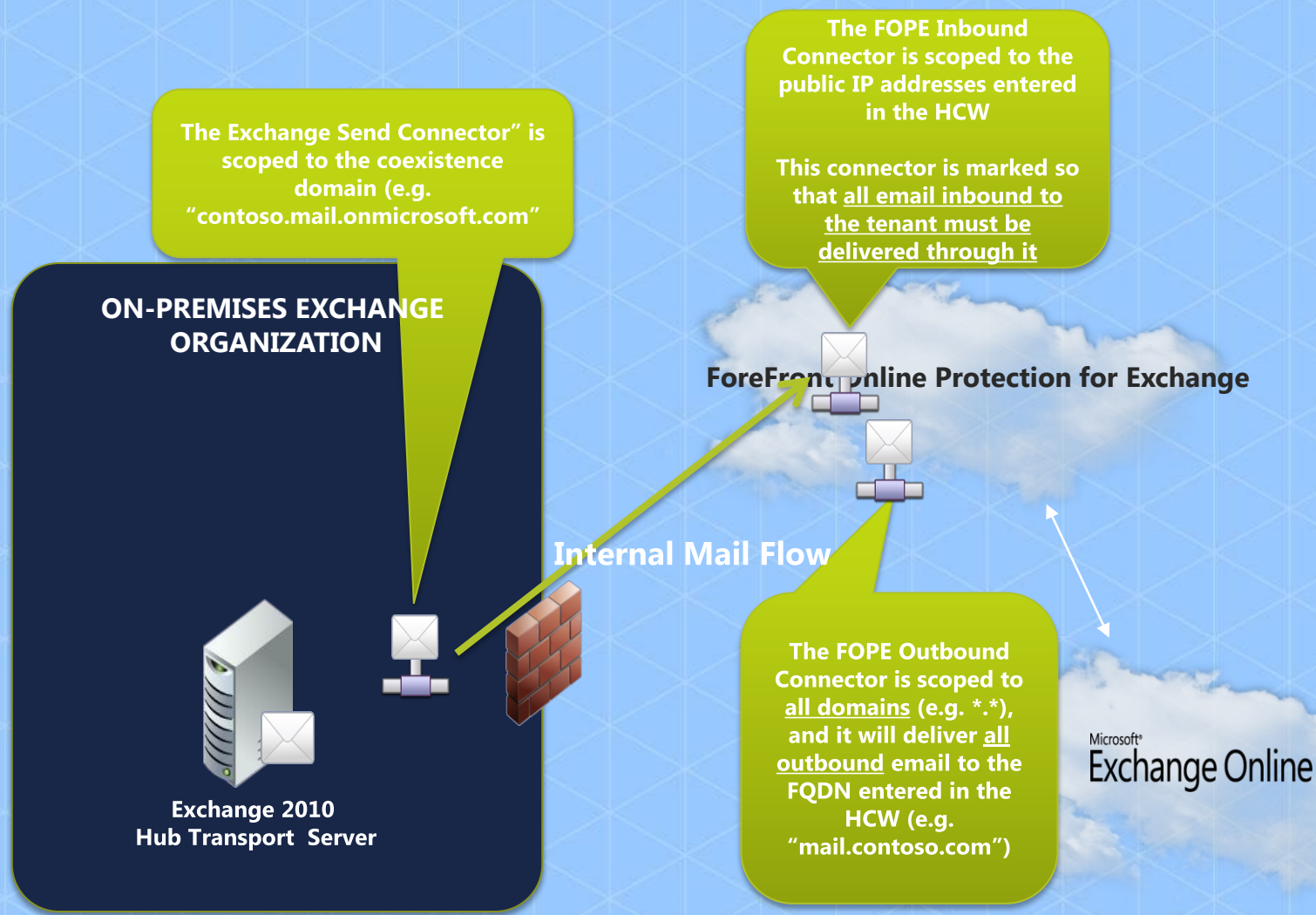


Microsoft  
Exchange Online

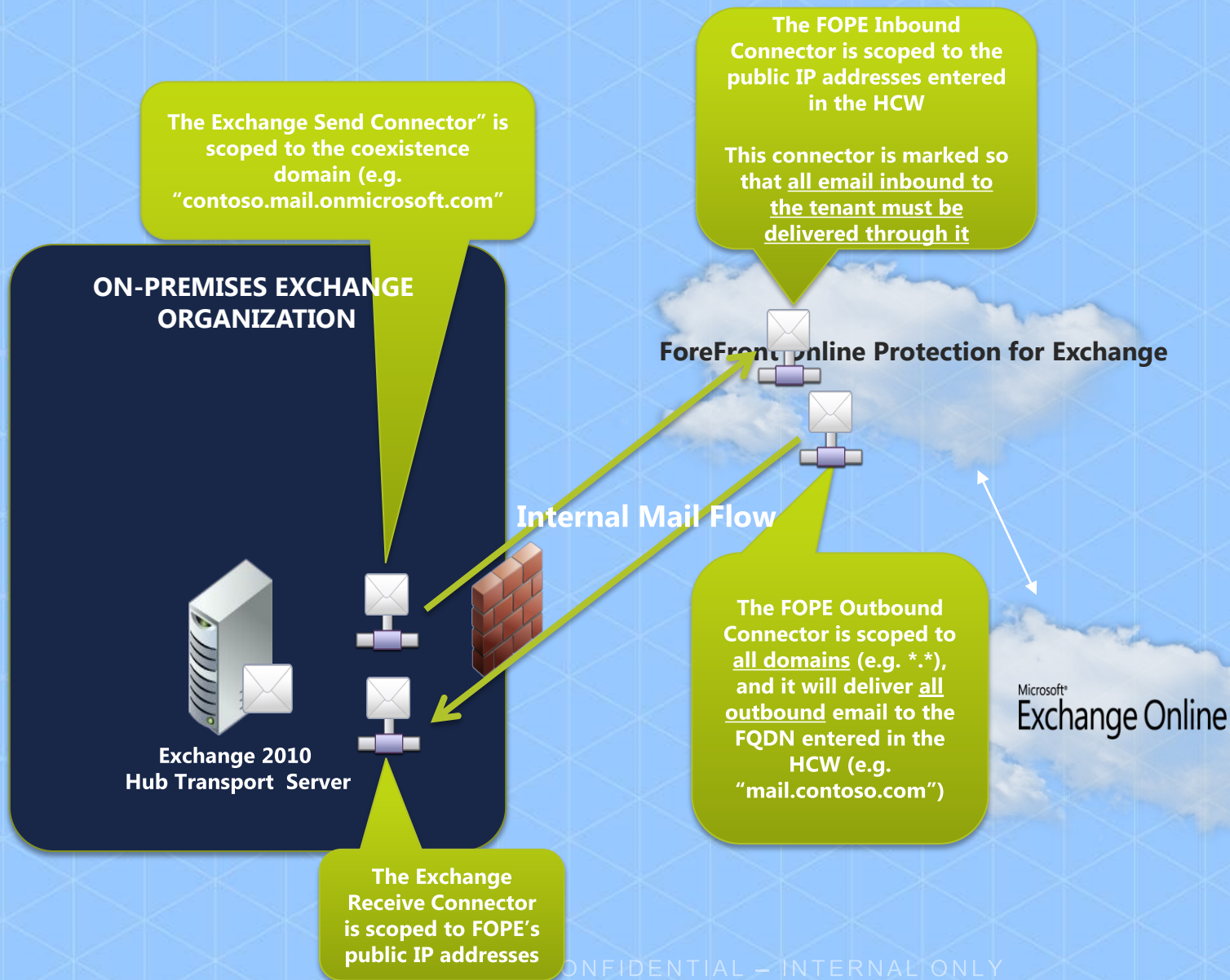
# Mail Flow – Centralized



# Mail Flow – Centralized

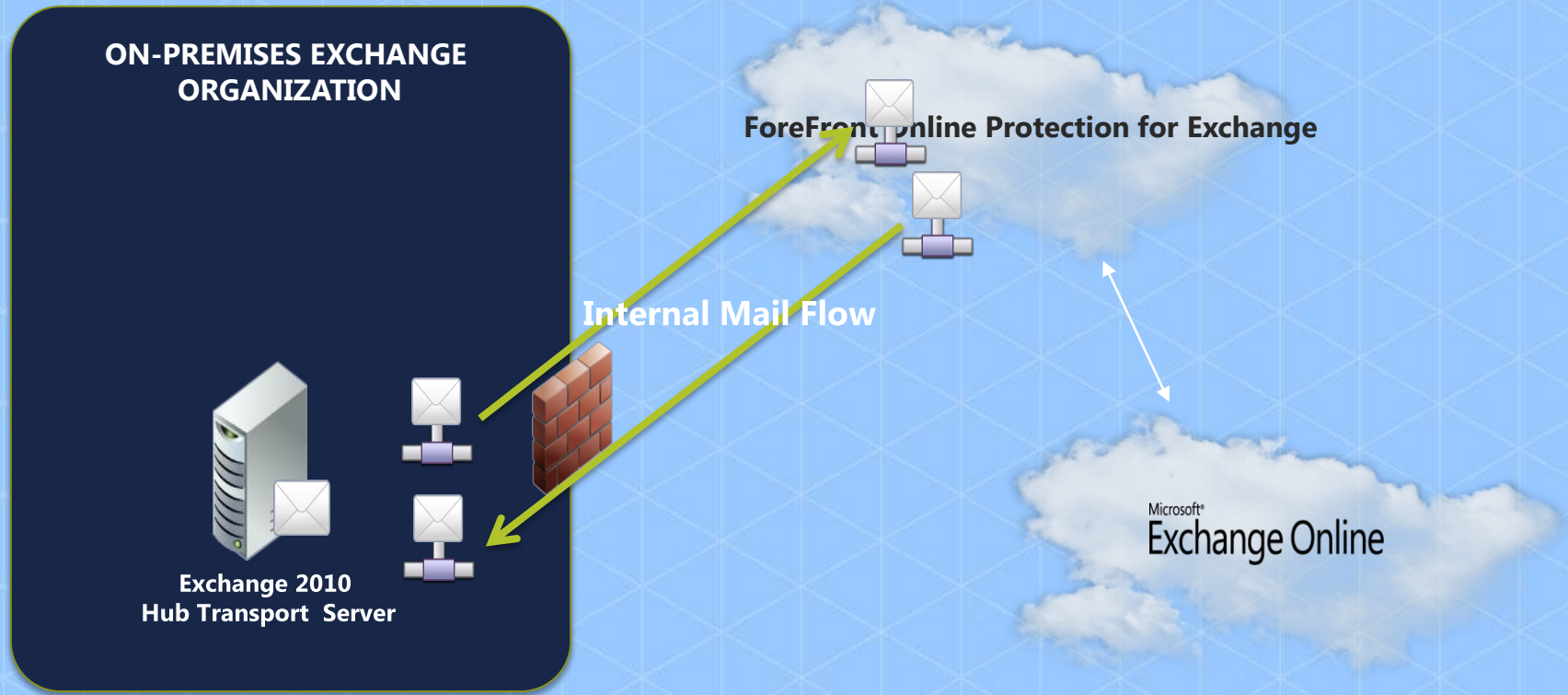


# Mail Flow – Centralized





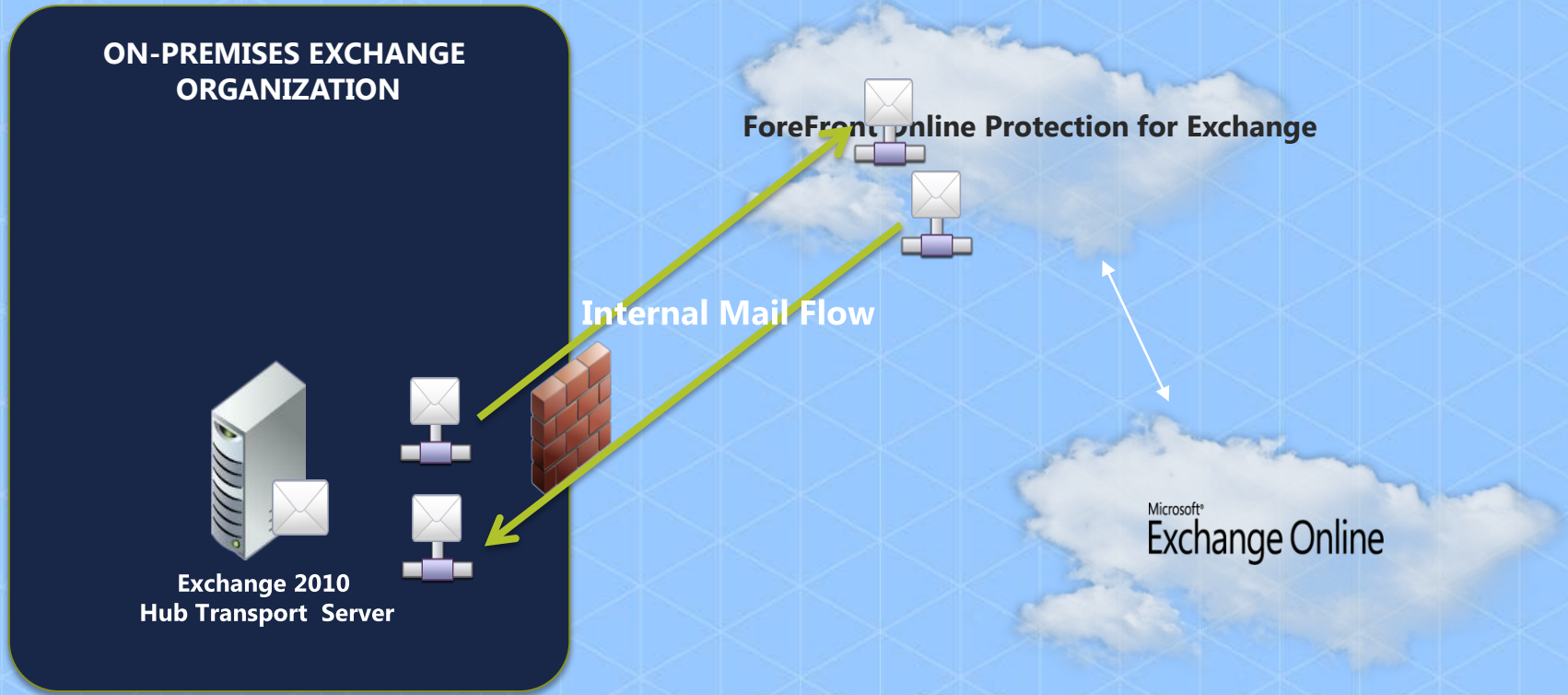
# Mail Flow – Centralized



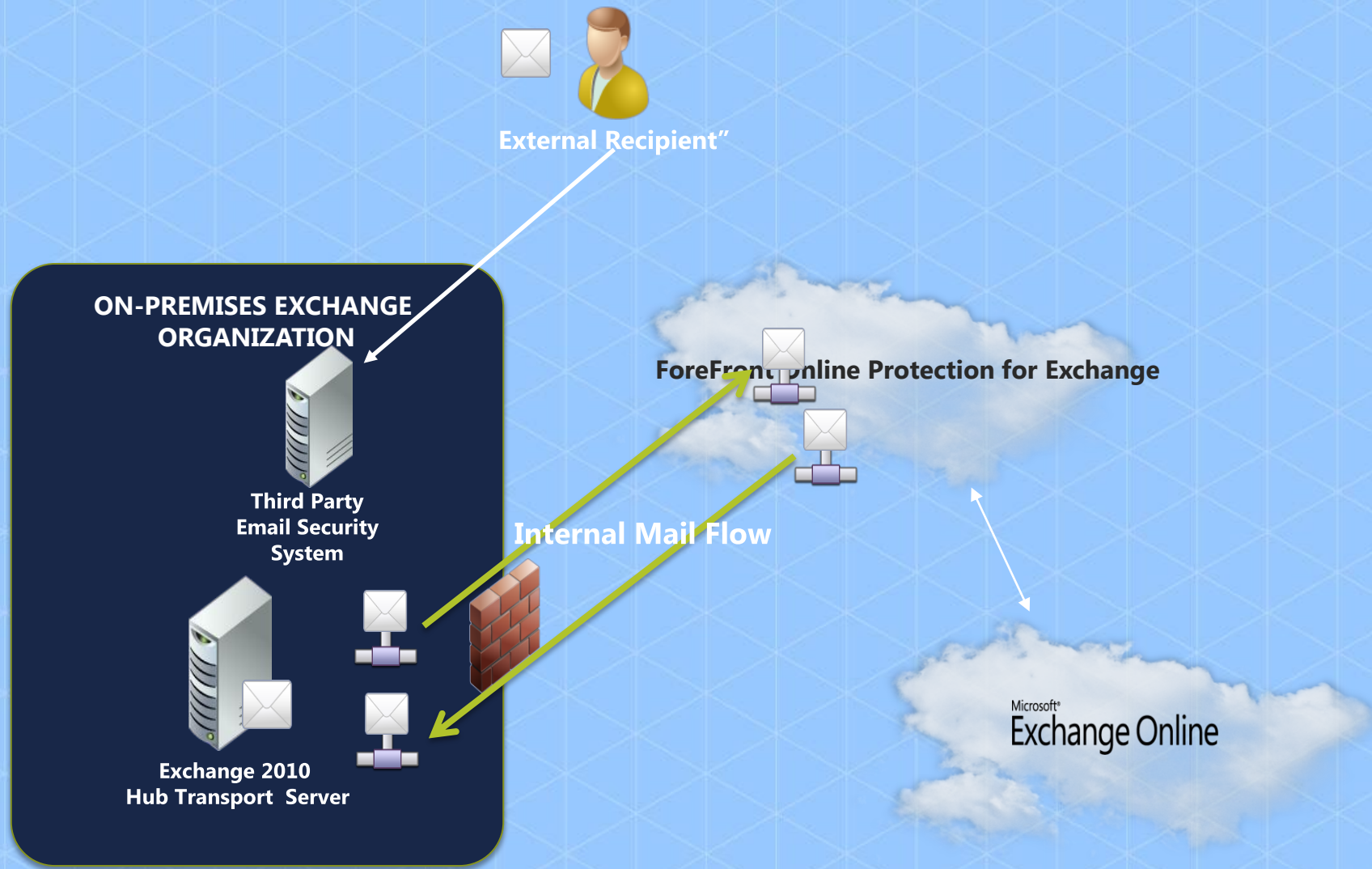
# Mail Flow – Centralized



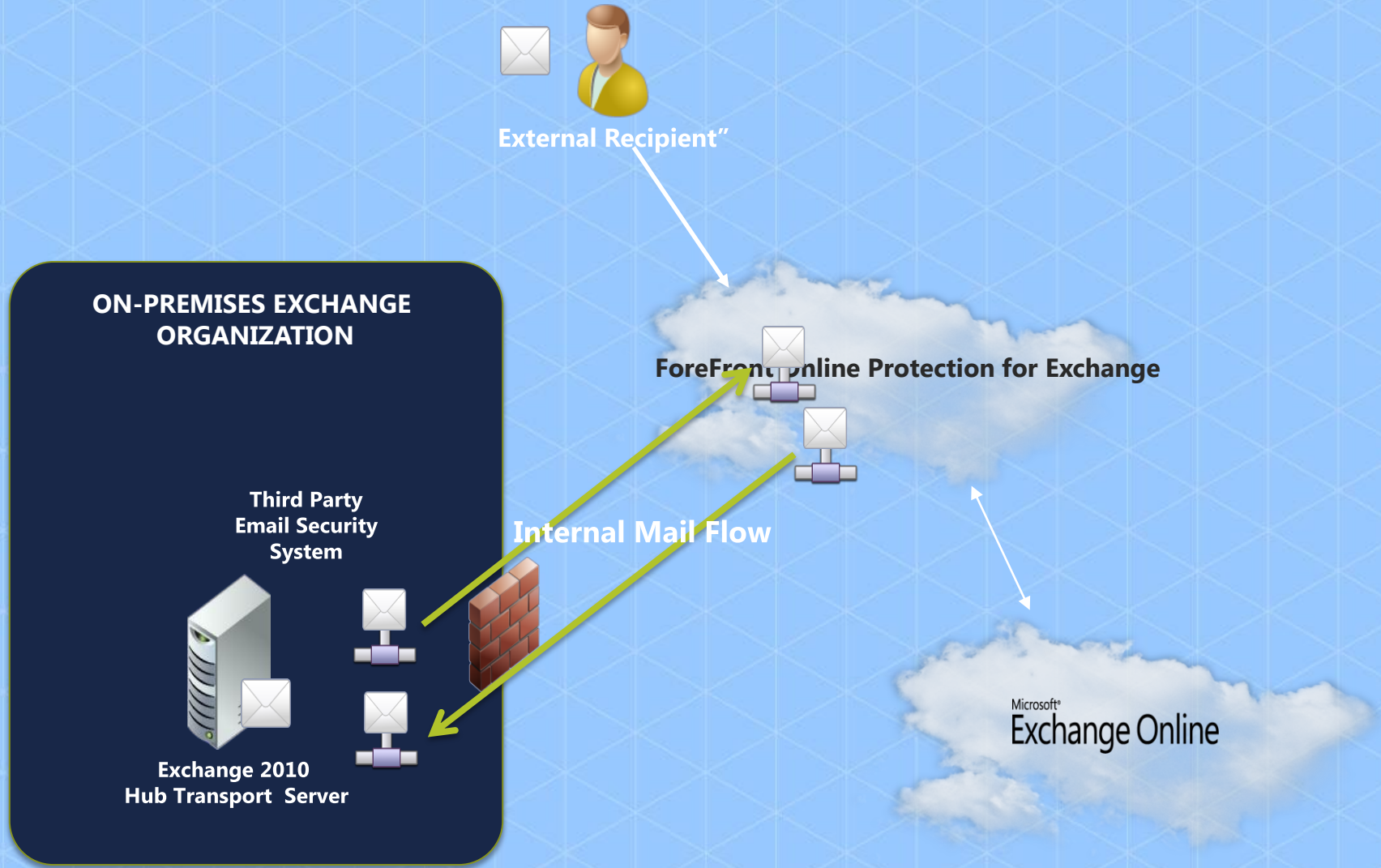
External Recipient



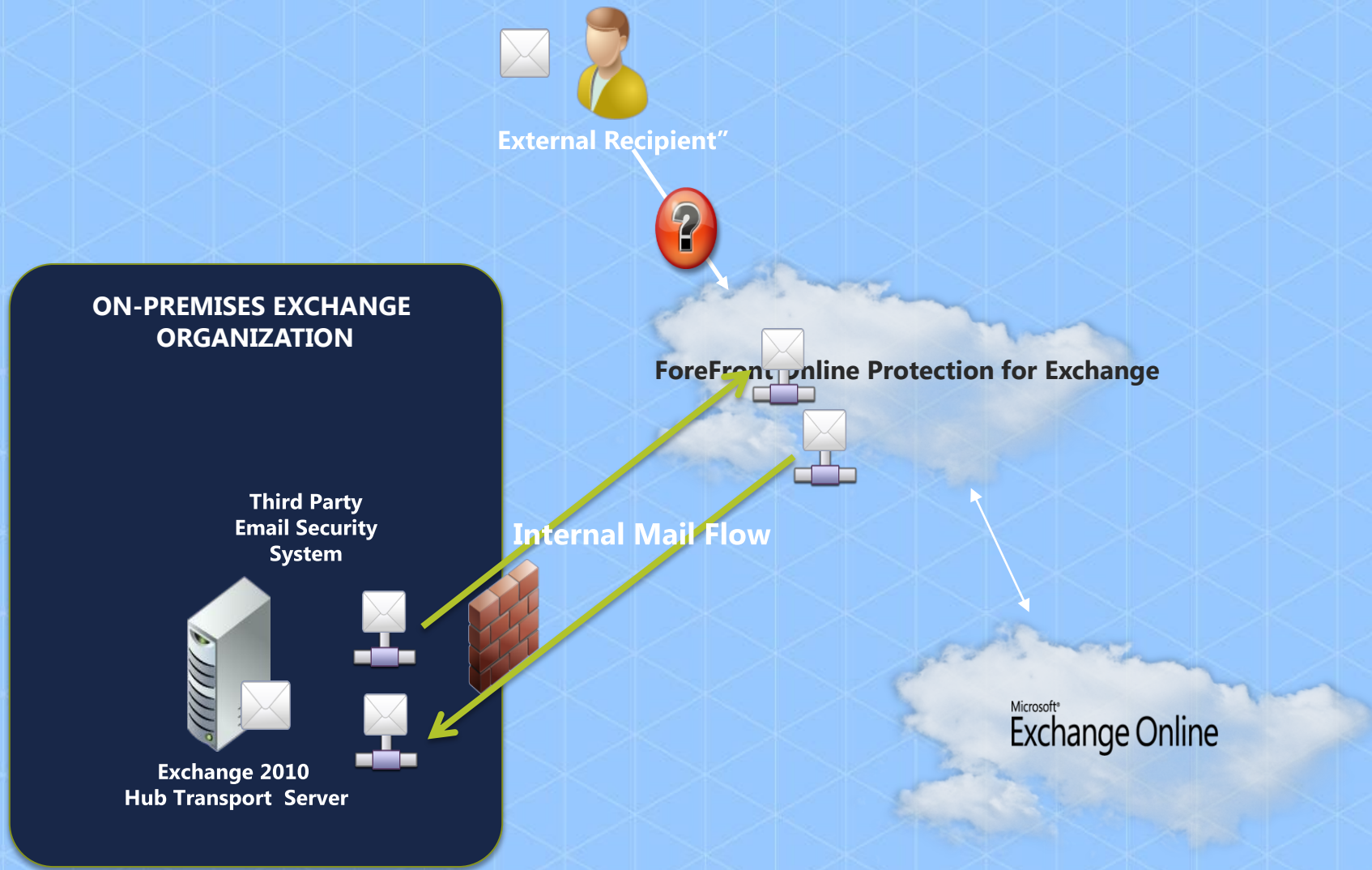
# Mail Flow – Centralized



# Mail Flow – Centralized



# Mail Flow – Centralized



# Common Deployment Issues - CAS

- Autodiscover is not published correctly
  - The external public DNS record for primary smtp domains must resolve to an Exchange Server 2010 SP1+ Client Access Server
  - The CAS server must have a public SSL certificate bound to it
  - The certificate must include the autodiscover DNS name within the Subject or SAN
- Pre-authentication is used in front of the Client Access Server
  - If using pre-authentication, the following URLs must be excluded and allow anonymous connections:
    - /EWS/Exchange.asmx/WSSecurity
    - /EWS/MRSPProxy.svc/WSSecurity
    - /Autodiscover/Autodiscover.svc/WSSecurity
- SSL Off loading is being used in front of CAS
  - Hybrid Configuration Wizard fix for SSL offloading in Rollup1
  - Updated SSL Offloading guidance published to TechNet which includes MRSPProxy specific steps [here](#) – Need to add a “http” binding into the /EWS/web.config

# Common Deployment Issues – Mail Flow

- Third party SMTP security devices in use between Exchange on-premises and ForeFront Online Protection for Exchange
  - TLS connection between Exchange on-premises and FOPE, for internal mail flow, must initiate/terminate on 2010 SP1+ Hub Transport or Edge Transport
- MX record is point to FOPE with Centralized Transport Control enabled
  - This scenario only works if FOPE was already in use prior to creating the Office 365 tenant
- Wildcard certificate used for TLS
  - There is a bug fixed in Rollup1 to enable support for wildcard certificates

# Session Objectives and Takeaways

- Session Objective(s):
  - Understand how the Hybrid Configuration Engine works
  - Understand the common pitfalls customers hit when they're configuring hybrid, and how to avoid them
- Dependencies are key. You must have your certs, DNS names etc working before you attempt to configure hybrid. Otherwise it's going to be hard



# Housekeeping

**98 Breakout Sessions**

**Hands-on Lab at Rooms S223,  
S227, S424**

**Windows 8 Consumer Preview  
Breakouts**

**Technology Expo**

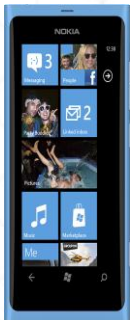
**Microsoft Launch Products Zone**

**Be Part Of The “Tech.Days 15th  
Anniversary Special  
– Worldfuture 2012” Game**

**Test Your Word Power – Wordament**

**Hand in Evaluation Form & Get a  
Souvenir Pack**

**Stay Until the End of The Event –  
Sweet Surprise**



PRESENTATION DOWNLOAD BEFORE MAR 22

<http://www.microsoft.com/hk/techdays2012/>

# Next Session – 13:30-14:45

- Room S221
  - UNC393 – Lync® Core Voice Planning and Deployment (English)
  - Speaker: Andrew Ehrensing
- Room S224-225
  - PMGT286 – Hybrid Cloud Management with System Center 2012 (Cantonese)
  - Speaker: Daniel Lai
- Room S228
  - WP330 – A Year in the Life of Wordament™ (English) (Repeated Session)
  - Speaker: John Thornton

# Next Session – 13:30-14:45

- Room S421
  - SVR384 – Windows 8 Hyper-V®: Scalability (English)
  - Speaker: Bryon Surace
- Room S425
  - PMGT319 – Orchestrator and Service Manager – Deep Integration in Action (English) (Repeated Session)
  - Speaker: Mark Gosson
- Room S426-427
  - BIN260 – IOIT & Big Data, Microsoft's Vision, Strategy and Roadmap (English)
  - Speaker: Denny Lee
- Room S428
  - OFC302 – Getting to Grips with Office 2010 Compatibilities (English)
  - Speaker: Kingsley Starling

# Next Session – 13:30-14:45

## ■ Hands-on Labs

### ■ Room S223

- PMGT369-HOL – Introduction to System Center Operations Manager 2012 (Cantonese) (Repeated Session)
- Speaker: Jacky Yiu

### ■ Room S227

- SVR379-HOL – What's New in Active Directory® (V3.0) (Cantonese) (Repeated Session)
- Speaker: John Lee

### ■ Room S424

- UNC383-HOL – Exchange Server 2010 SP1: Compliance-Archiving and Retention (Cantonese)
- Speaker: Philip Yeung

# ***Microsoft***<sup>®</sup>

© 2012 Microsoft Corporation. All rights reserved. Microsoft, Windows, Windows Vista and other product names are or may be registered trademarks and/or trademarks in the U.S. and/or other countries. The information herein is for informational purposes only and represents the current view of Microsoft Corporation as of the date of this presentation. Because Microsoft must respond to changing market conditions, it should not be interpreted to be a commitment on the part of Microsoft, and Microsoft cannot guarantee the accuracy of any information provided after the date of this presentation. MICROSOFT MAKES NO WARRANTIES, EXPRESS, IMPLIED OR STATUTORY, AS TO THE INFORMATION IN THIS PRESENTATION.